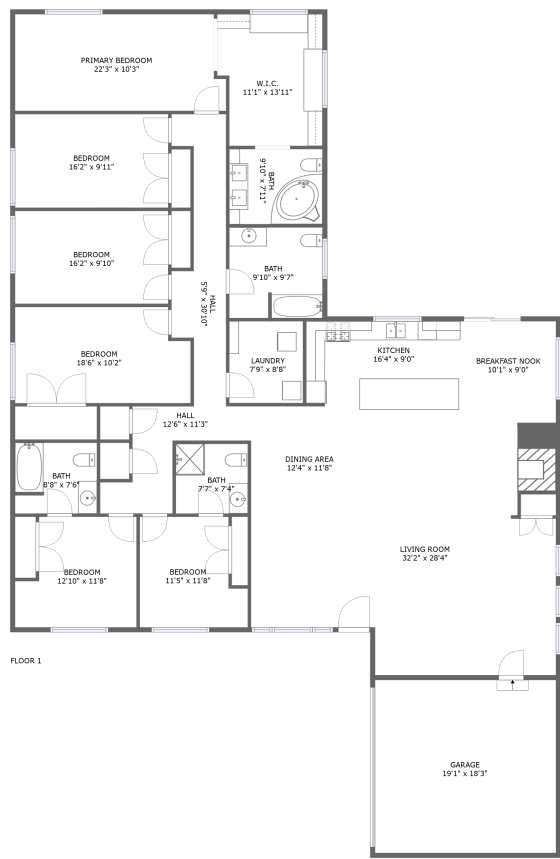




Home report

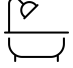
15922 84th Avenue Northeast, Moorlands, Kenmore, King
County, Washington, United States, 98028




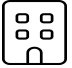
Property summary


 **1** Garages


 **6** Bedrooms

 **4** Bathrooms

 **0** Half baths

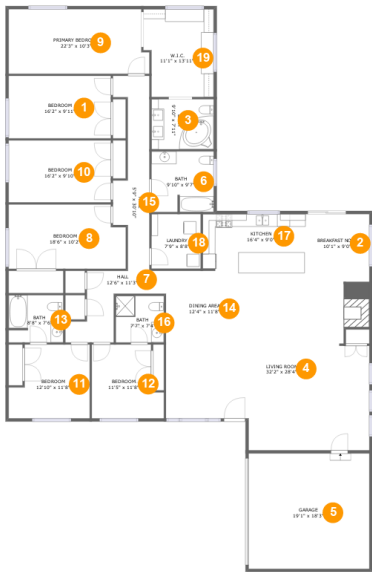
 **1** Floors

 **3,121** Gross living area sqft

 **3,498** Total sqft

Home report

15922 84th Avenue Northeast, Moorlands, Kenmore, King
County, Washington, United States, 98028



Room dimensions

Floor 1 Total sqft: 3498 Living area: 3121

#		Max Dimensions	sqft	Included
1	Bedroom	16'2" x 9'11"	160 sq. ft	Yes
2	Breakfast Nook	10'1" x 9'0"	90 sq. ft	Yes
3	Bath	9'10" x 7'11"	78 sq. ft	Yes
4	Living Room	32'2" x 28'4"	681 sq. ft	Yes
5	Garage	19'1" x 18'3"	349 sq. ft	No
6	Bath	9'10" x 9'7"	93 sq. ft	Yes
7	Hall	12'6" x 11'3"	90 sq. ft	Yes
8	Bedroom	18'6" x 10'2"	180 sq. ft	Yes
9	Primary Bedroom	22'3" x 10'3"	219 sq. ft	Yes
10	Bedroom	16'2" x 9'10"	159 sq. ft	Yes
11	Bedroom	12'10" x 11'8"	133 sq. ft	Yes

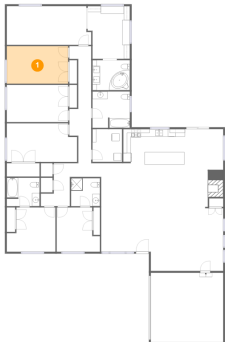
Home report

**15922 84th Avenue Northeast, Moorlands, Kenmore, King
County, Washington, United States, 98028**

#		Max Dimensions	sqft	Included
12	Bedroom	11'5" x 11'8"	118 sq. ft	Yes
13	Bath	8'8" x 7'6"	64 sq. ft	Yes
14	Dining Area	12'4" x 11'8"	144 sq. ft	Yes
15	Hall	5'9" x 30'10"	130 sq. ft	Yes
16	Bath	7'7" x 7'4"	56 sq. ft	Yes
17	Kitchen	16'4" x 9'0"	146 sq. ft	Yes
18	Laundry	7'9" x 8'8"	67 sq. ft	Yes
19	W.I.C.	11'1" x 13'11"	145 sq. ft	Yes

15922 84th Avenue Northeast, Moorlands, Kenmore, King
County, Washington, United States, 98028

1 Floor 1 - Bedroom



Max Dimensions: 16'2" x 9'11"
Calculated Area: 160 sq. ft
Included: Yes

Heated: Yes
Finished: Yes
Enclosed: Yes
Contiguous: Yes
Permitted: Yes
Wet space: No
Addition: No
Conversion: No

2 Floor 1 - Breakfast Nook



Max Dimensions: 10'1" x 9'0"
Calculated Area: 90 sq. ft
Included: Yes

Heated: Yes
Finished: Yes
Enclosed: Yes
Contiguous: Yes
Permitted: Yes
Wet space: No
Addition: No
Conversion: No

15922 84th Avenue Northeast, Moorlands, Kenmore, King
County, Washington, United States, 98028

3 Floor 1 - Bath



Max Dimensions: 9'10" x 7'11"
Calculated Area: 78 sq. ft
Included: Yes

Heated: Yes
Finished: Yes
Enclosed: Yes
Contiguous: Yes
Permitted: Yes
Wet space: Yes
Addition: No
Conversion: No

4 Floor 1 - Living Room



Max Dimensions: 32'2" x 28'4"
Calculated Area: 681 sq. ft
Included: Yes

Heated: Yes
Finished: Yes
Enclosed: Yes
Contiguous: Yes
Permitted: Yes
Wet space: No
Addition: No
Conversion: No

5 Floor 1 - Garage



Max Dimensions: 19'1" x 18'3"
Calculated Area: 349 sq. ft
Included: No

Heated: No
Finished: No
Enclosed: Yes
Contiguous: Yes
Permitted: Yes
Wet space: No
Addition: No
Conversion: No

15922 84th Avenue Northeast, Moorlands, Kenmore, King
County, Washington, United States, 98028

6 Floor 1 - Bath



Max Dimensions: 9'10" x 9'7"
Calculated Area: 93 sq. ft
Included: Yes

Heated: Yes
Finished: Yes
Enclosed: Yes
Contiguous: Yes
Permitted: Yes
Wet space: Yes
Addition: No
Conversion: No

7 Floor 1 - Hall



Max Dimensions: 12'6" x 11'3"
Calculated Area: 90 sq. ft
Included: Yes

Heated: Yes
Finished: Yes
Enclosed: Yes
Contiguous: Yes
Permitted: Yes
Wet space: No
Addition: No
Conversion: No

8 Floor 1 - Bedroom



Max Dimensions: 18'6" x 10'2"
Calculated Area: 180 sq. ft
Included: Yes

Heated: Yes
Finished: Yes
Enclosed: Yes
Contiguous: Yes
Permitted: Yes
Wet space: No
Addition: No
Conversion: No

15922 84th Avenue Northeast, Moorlands, Kenmore, King
County, Washington, United States, 98028

9 Floor 1 - Primary Bedroom



Max Dimensions: 22'3" x 10'3"
Calculated Area: 219 sq. ft
Included: Yes

Heated: Yes
Finished: Yes
Enclosed: Yes
Contiguous: Yes
Permitted: Yes
Wet space: No
Addition: No
Conversion: No

10 Floor 1 - Bedroom



Max Dimensions: 16'2" x 9'10"
Calculated Area: 159 sq. ft
Included: Yes

Heated: Yes
Finished: Yes
Enclosed: Yes
Contiguous: Yes
Permitted: Yes
Wet space: No
Addition: No
Conversion: No

11 Floor 1 - Bedroom



Max Dimensions: 12'10" x 11'8"
Calculated Area: 133 sq. ft
Included: Yes

Heated: Yes
Finished: Yes
Enclosed: Yes
Contiguous: Yes
Permitted: Yes
Wet space: No
Addition: No
Conversion: No

15922 84th Avenue Northeast, Moorlands, Kenmore, King
County, Washington, United States, 98028

12 Floor 1 - Bedroom



Max Dimensions: 11'5" x 11'8"
Calculated Area: 118 sq. ft
Included: Yes

Heated: Yes
Finished: Yes
Enclosed: Yes
Contiguous: Yes
Permitted: Yes
Wet space: No
Addition: No
Conversion: No

13 Floor 1 - Bath



Max Dimensions: 8'8" x 7'6"
Calculated Area: 64 sq. ft
Included: Yes

Heated: Yes
Finished: Yes
Enclosed: Yes
Contiguous: Yes
Permitted: Yes
Wet space: Yes
Addition: No
Conversion: No

14 Floor 1 - Dining Area



Max Dimensions: 12'4" x 11'8"
Calculated Area: 144 sq. ft
Included: Yes

Heated: Yes
Finished: Yes
Enclosed: Yes
Contiguous: Yes
Permitted: Yes
Wet space: No
Addition: No
Conversion: No

15 Floor 1 - Hall



Max Dimensions: 5'9" x 30'10"
Calculated Area: 130 sq. ft
Included: Yes

Heated: Yes
Finished: Yes
Enclosed: Yes
Contiguous: Yes
Permitted: Yes
Wet space: No
Addition: No
Conversion: No

16 Floor 1 - Bath



Max Dimensions: 7'7" x 7'4"
Calculated Area: 56 sq. ft
Included: Yes

Heated: Yes
Finished: Yes
Enclosed: Yes
Contiguous: Yes
Permitted: Yes
Wet space: Yes
Addition: No
Conversion: No

17 Floor 1 - Kitchen



Max Dimensions: 16'4" x 9'0"
Calculated Area: 146 sq. ft
Included: Yes

Heated: Yes
Finished: Yes
Enclosed: Yes
Contiguous: Yes
Permitted: Yes
Wet space: No
Addition: No
Conversion: No

15922 84th Avenue Northeast, Moorlands, Kenmore, King
County, Washington, United States, 98028

18 Floor 1 - Laundry



Max Dimensions: 7'9" x 8'8"
Calculated Area: 67 sq. ft
Included: Yes

Heated: Yes
Finished: Yes
Enclosed: Yes
Contiguous: Yes
Permitted: Yes
Wet space: No
Addition: No
Conversion: No

19 Floor 1 - W.I.C.



Max Dimensions: 11'1" x 13'11"
Calculated Area: 145 sq. ft
Included: Yes

Heated: Yes
Finished: Yes
Enclosed: Yes
Contiguous: Yes
Permitted: Yes
Wet space: No
Addition: No
Conversion: No