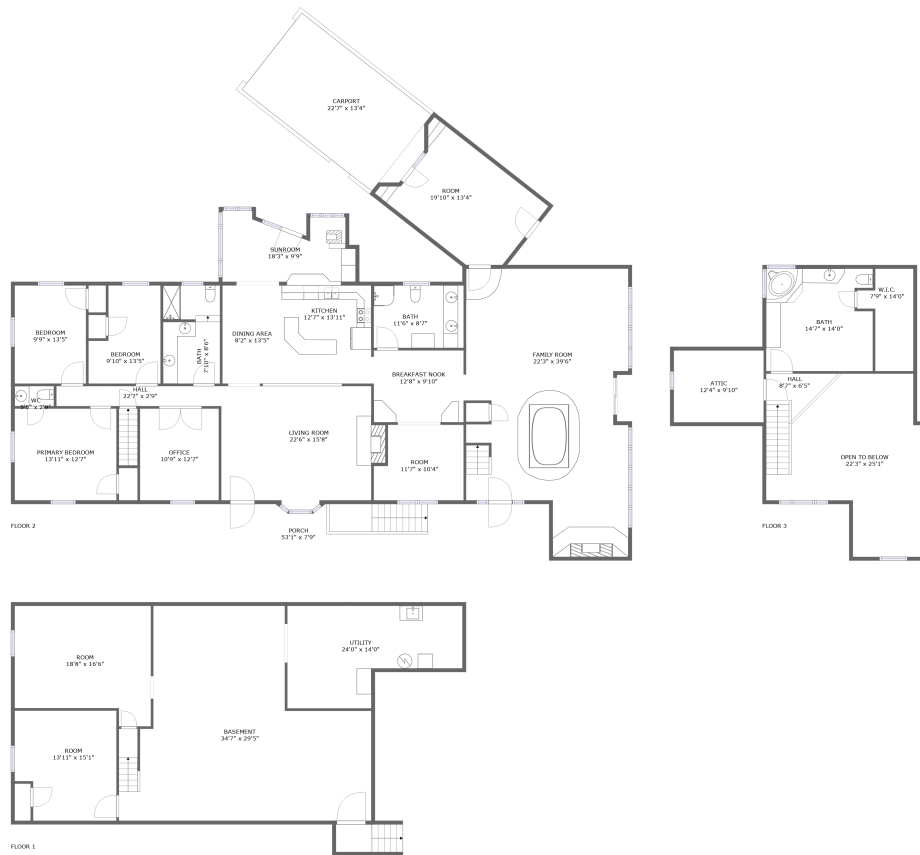



# Home report


## 1305 Foothills Road, Callaway, Virginia, United States



## Property summary


 **0** Garages

 **3** Bedrooms

 **3** Bathrooms

 **1** Half baths

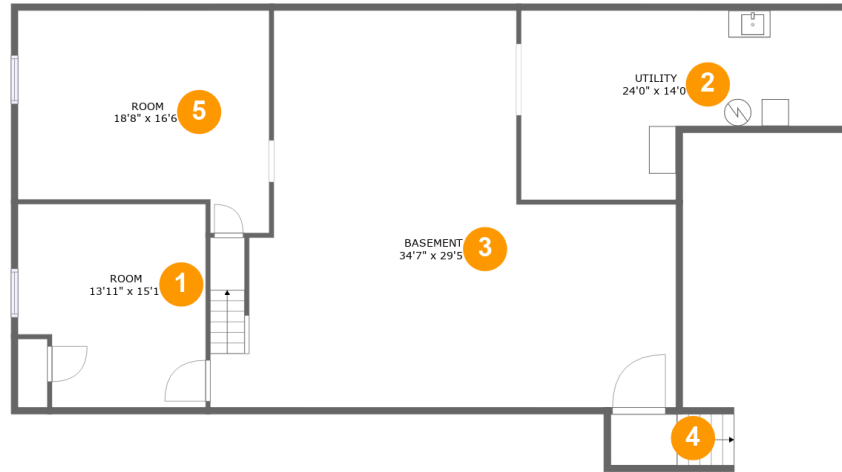
 **3** Floors

 **3,672** Gross living area sqft

 **6,457** Total sqft

Home report

1305 Foothills Road, Callaway, Virginia, United States



## Room dimensions

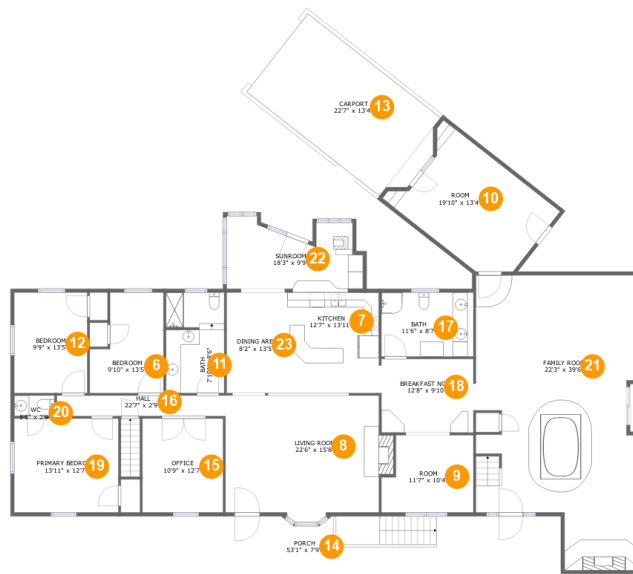
Floor 1

Total sqft: 1636 Living area: 220

#		Dimensions	sqft	Counted as living area
1	Room	13'11" x 15'1"	197 sq. ft	Yes
2	Utility	24'0" x 14'0"	268 sq. ft	No
3	Basement	34'7" x 29'5"	766 sq. ft	No
4	Outdoor	4'11" x 3'9"	19 sq. ft	No
5	Room	18'8" x 16'6"	272 sq. ft	No

Home report

# 1305 Foothills Road, Callaway, Virginia, United States



## Room dimensions

Floor 2

Total sqft: 3880

Living area: 3152

#		Dimensions	sqft	Counted as living area
6	Bedroom	9'10" x 13'5"	112 sq. ft	Yes
7	Kitchen	12'7" x 13'11"	170 sq. ft	Yes
8	Living Room	22'6" x 15'8"	335 sq. ft	Yes
9	Room	11'7" x 10'4"	116 sq. ft	Yes
10	Room	19'10" x 13'4"	239 sq. ft	Yes
11	Bath	7'10" x 8'6"	103 sq. ft	Yes
12	Bedroom	9'9" x 13'5"	131 sq. ft	Yes
13	Carport	22'7" x 13'4"	318 sq. ft	No
14	Porch	53'1" x 7'9"	404 sq. ft	No
15	Office	10'9" x 12'7"	136 sq. ft	Yes
16	Hall	22'7" x 2'9"	62 sq. ft	Yes

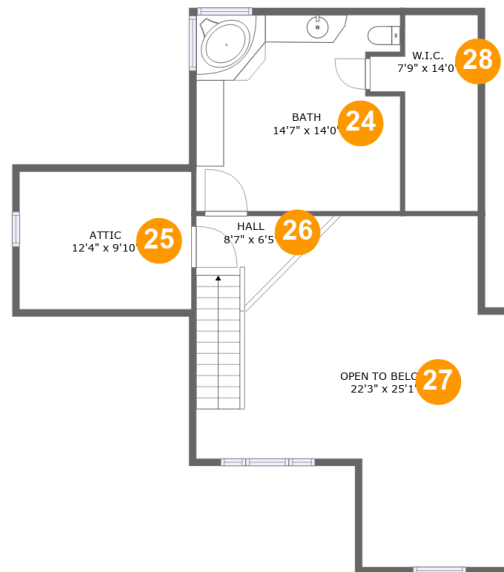
Home report

## 1305 Foothills Road, Callaway, Virginia, United States

#		Dimensions	sqft	Counted as living area
17	Bath	11'6" x 8'7"	105 sq. ft	Yes
18	Breakfast Nook	12'8" x 9'10"	122 sq. ft	Yes
19	Primary Bedroom	13'11" x 12'7"	175 sq. ft	Yes
20	WC	5'5" x 2'9"	15 sq. ft	Yes
21	Family Room	22'3" x 39'6"	757 sq. ft	Yes
22	Sunroom	18'3" x 9'9"	145 sq. ft	Yes
23	Dining Area	8'2" x 13'5"	110 sq. ft	Yes

Home report

1305 Foothills Road, Callaway, Virginia, United States



## Room dimensions

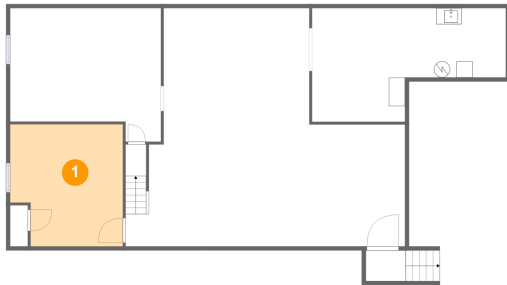
Floor 3

Total sqft: 941

Living area: 300

#		Dimensions	sqft	Counted as living area
24	Bath	14'7" x 14'0"	197 sq. ft	Yes
25	Attic	12'4" x 9'10"	65 sq. ft	No
26	Hall	8'7" x 6'5"	72 sq. ft	Yes
27	Open To Below	22'3" x 25'1"	380 sq. ft	No
28	W.I.C.	7'9" x 14'0"	80 sq. ft	No

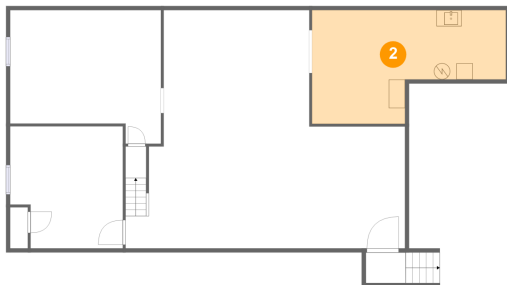
## 1 Floor 1 - Room



Dimensions: 13'11" x 15'1"  
Area: 197 sq. ft  
Counted as living area: Yes

Heated: Yes  
Finished: Yes  
Enclosed: Yes  
Contiguous: Yes  
Permitted: Yes  
Wet space: No  
Addition: No  
Conversion: No

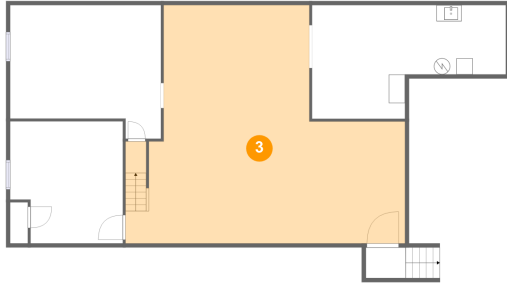
## 2 Floor 1 - Utility



Dimensions: 24'0" x 14'0"  
Area: 268 sq. ft  
Counted as living area: No

Heated: Yes  
Finished: No  
Enclosed: Yes  
Contiguous: Yes  
Permitted: Yes  
Wet space: No  
Addition: No  
Conversion: No

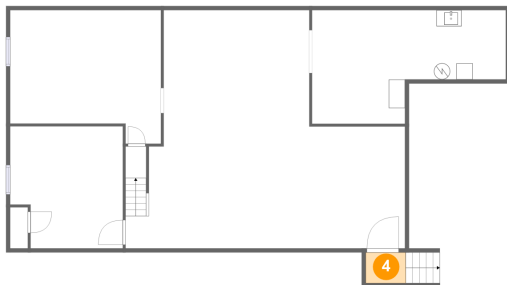
### 3 Floor 1 - Basement



Dimensions: 34'7" x 29'5"  
Area: 766 sq. ft  
Counted as living area: No

Heated: Yes  
Finished: No  
Enclosed: Yes  
Contiguous: Yes  
Permitted: Yes  
Wet space: No  
Addition: No  
Conversion: No

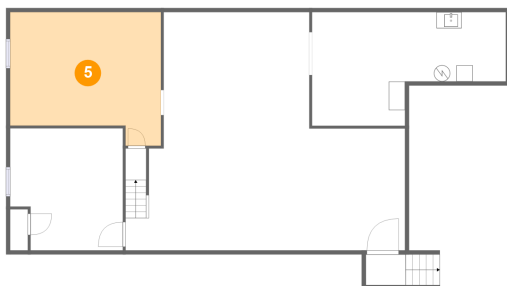
### 4 Floor 1 - Outdoor



Dimensions: 4'11" x 3'9"  
Area: 19 sq. ft  
Counted as living area: No

Heated: No  
Finished: No  
Enclosed: No  
Contiguous: Yes  
Permitted: No  
Wet space: No  
Addition: No  
Conversion: No

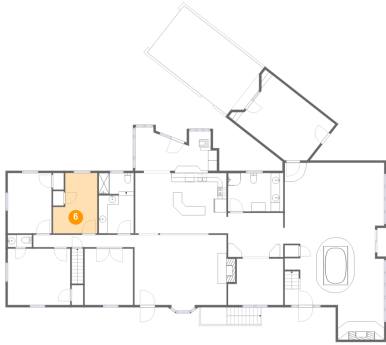
### 5 Floor 1 - Room



Dimensions: 18'8" x 16'6"  
Area: 272 sq. ft  
Counted as living area: No

Heated: Yes  
Finished: Yes  
Enclosed: Yes  
Contiguous: No  
Permitted: Yes  
Wet space: No  
Addition: No  
Conversion: No

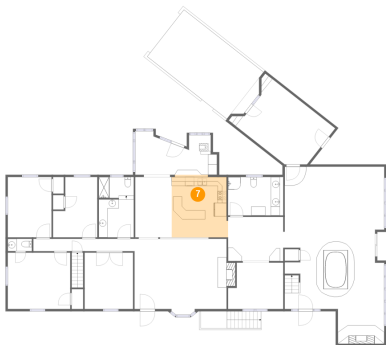
## 6 Floor 2 - Bedroom



Dimensions: 9'10" x 13'5"  
Area: 112 sq. ft  
Counted as living area: Yes

Heated: Yes  
Finished: Yes  
Enclosed: Yes  
Contiguous: Yes  
Permitted: Yes  
Wet space: No  
Addition: No  
Conversion: No

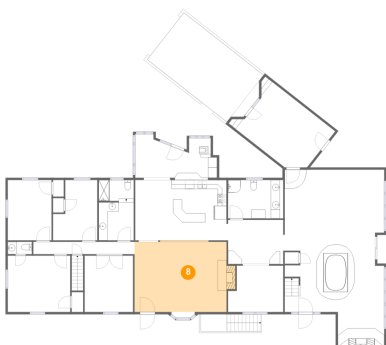
## 7 Floor 2 - Kitchen



Dimensions: 12'7" x 13'11"  
Area: 170 sq. ft  
Counted as living area: Yes

Heated: Yes  
Finished: Yes  
Enclosed: Yes  
Contiguous: Yes  
Permitted: Yes  
Wet space: No  
Addition: No  
Conversion: No

## 8 Floor 2 - Living Room



Dimensions: 22'6" x 15'8"  
Area: 335 sq. ft  
Counted as living area: Yes

Heated: Yes  
Finished: Yes  
Enclosed: Yes  
Contiguous: Yes  
Permitted: Yes  
Wet space: No  
Addition: No  
Conversion: No



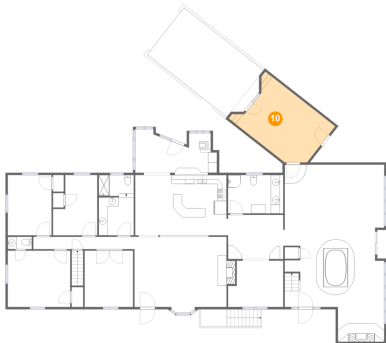
**9** Floor 2 - Room



Dimensions: 11'7" x 10'4"  
Area: 116 sq. ft  
Counted as living area: Yes

Heated: Yes  
Finished: Yes  
Enclosed: Yes  
Contiguous: Yes  
Permitted: Yes  
Wet space: No  
Addition: No  
Conversion: No

**10** Floor 2 - Room



Dimensions: 19'10" x 13'4"  
Area: 239 sq. ft  
Counted as living area: Yes

Heated: Yes  
Finished: Yes  
Enclosed: Yes  
Contiguous: Yes  
Permitted: Yes  
Wet space: No  
Addition: No  
Conversion: No

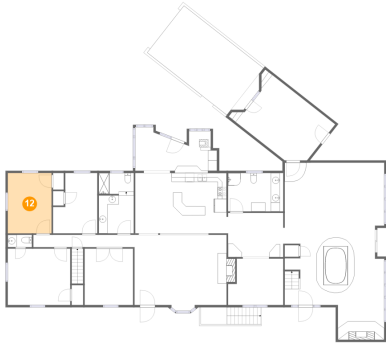
**11** Floor 2 - Bath



Dimensions: 7'10" x 8'6"  
Area: 103 sq. ft  
Counted as living area: Yes

Heated: Yes  
Finished: Yes  
Enclosed: Yes  
Contiguous: Yes  
Permitted: Yes  
Wet space: Yes  
Addition: No  
Conversion: No

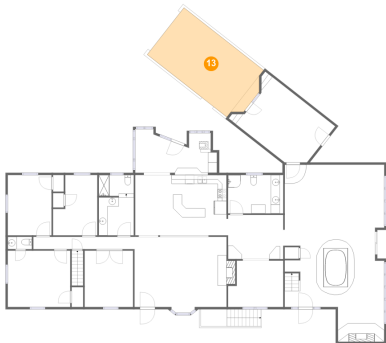
**12** Floor 2 - Bedroom



Dimensions: 9'9" x 13'5"  
Area: 131 sq. ft  
Counted as living area: Yes

Heated: Yes  
Finished: Yes  
Enclosed: Yes  
Contiguous: Yes  
Permitted: Yes  
Wet space: No  
Addition: No  
Conversion: No

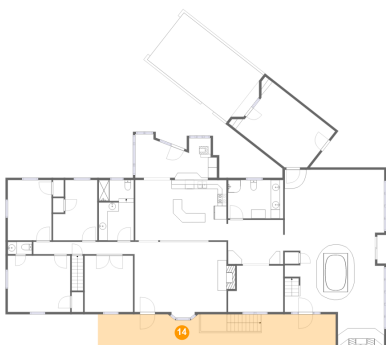
**13** Floor 2 - Carport



Dimensions: 22'7" x 13'4"  
Area: 318 sq. ft  
Counted as living area: No

Heated: No  
Finished: Yes  
Enclosed: No  
Contiguous: Yes  
Permitted: Yes  
Wet space: No  
Addition: No  
Conversion: No

**14** Floor 2 - Porch



Dimensions: 53'1" x 7'9"  
Area: 404 sq. ft  
Counted as living area: No

Heated: No  
Finished: Yes  
Enclosed: No  
Contiguous: Yes  
Permitted: Yes  
Wet space: No  
Addition: No  
Conversion: No

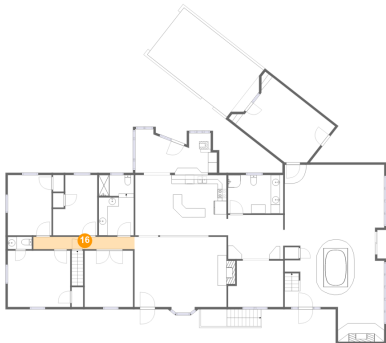
**15** Floor 2 - Office



Dimensions: 10'9" x 12'7"  
Area: 136 sq. ft  
Counted as living area: Yes

Heated: Yes  
Finished: Yes  
Enclosed: Yes  
Contiguous: Yes  
Permitted: Yes  
Wet space: No  
Addition: No  
Conversion: No

**16** Floor 2 - Hall



Dimensions: 22'7" x 2'9"  
Area: 62 sq. ft  
Counted as living area: Yes

Heated: Yes  
Finished: Yes  
Enclosed: Yes  
Contiguous: Yes  
Permitted: Yes  
Wet space: No  
Addition: No  
Conversion: No

**17** Floor 2 - Bath



Dimensions: 11'6" x 8'7"  
Area: 105 sq. ft  
Counted as living area: Yes

Heated: Yes  
Finished: Yes  
Enclosed: Yes  
Contiguous: Yes  
Permitted: Yes  
Wet space: Yes  
Addition: No  
Conversion: No

**18** Floor 2 - Breakfast Nook



Dimensions: 12'8" x 9'10"  
Area: 122 sq. ft  
Counted as living area: Yes

Heated: Yes  
Finished: Yes  
Enclosed: Yes  
Contiguous: Yes  
Permitted: Yes  
Wet space: No  
Addition: No  
Conversion: No

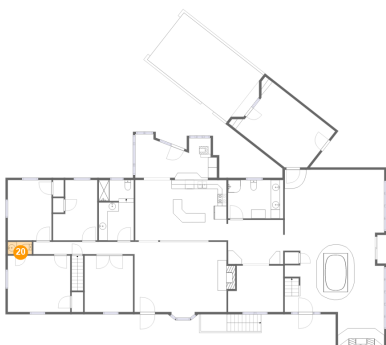
**19** Floor 2 - Primary Bedroom



Dimensions: 13'11" x 12'7"  
Area: 175 sq. ft  
Counted as living area: Yes

Heated: Yes  
Finished: Yes  
Enclosed: Yes  
Contiguous: Yes  
Permitted: Yes  
Wet space: No  
Addition: No  
Conversion: No

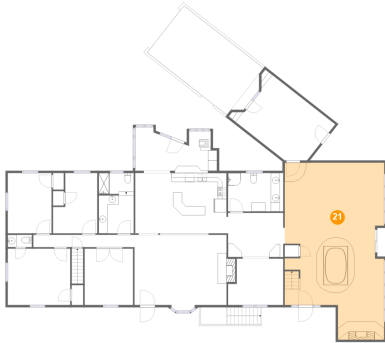
**20** Floor 2 - WC



Dimensions: 5'5" x 2'9"  
Area: 15 sq. ft  
Counted as living area: Yes

Heated: Yes  
Finished: Yes  
Enclosed: Yes  
Contiguous: Yes  
Permitted: Yes  
Wet space: Yes  
Addition: No  
Conversion: No

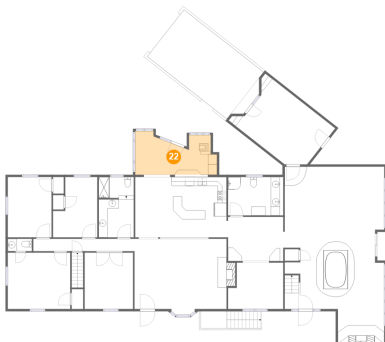
## 21 Floor 2 - Family Room



Dimensions: 22'3" x 39'6"  
Area: 757 sq. ft  
Counted as living area: Yes

Heated: Yes  
Finished: Yes  
Enclosed: Yes  
Contiguous: Yes  
Permitted: Yes  
Wet space: No  
Addition: No  
Conversion: No

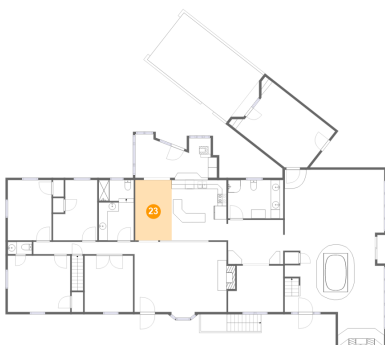
## 22 Floor 2 - Sunroom



Dimensions: 18'3" x 9'9"  
Area: 145 sq. ft  
Counted as living area: Yes

Heated: Yes  
Finished: Yes  
Enclosed: Yes  
Contiguous: Yes  
Permitted: Yes  
Wet space: No  
Addition: No  
Conversion: No

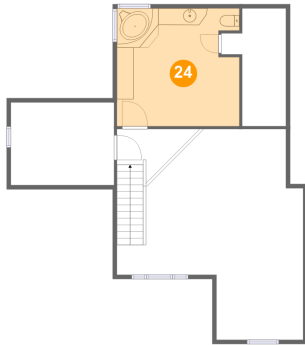
## 23 Floor 2 - Dining Area



Dimensions: 8'2" x 13'5"  
Area: 110 sq. ft  
Counted as living area: Yes

Heated: Yes  
Finished: Yes  
Enclosed: Yes  
Contiguous: Yes  
Permitted: Yes  
Wet space: No  
Addition: No  
Conversion: No

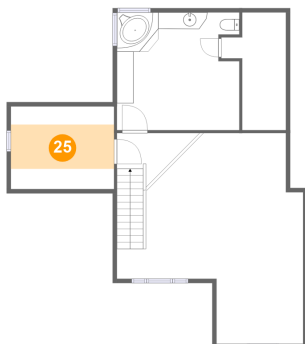
**24** Floor 3 - Bath



Dimensions: 14'7" x 14'0"  
Area: 197 sq. ft  
Counted as living area: Yes

Heated: Yes  
Finished: Yes  
Enclosed: Yes  
Contiguous: Yes  
Permitted: Yes  
Wet space: Yes  
Addition: No  
Conversion: No

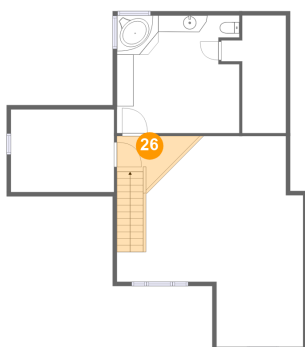
**25** Floor 3 - Attic



Dimensions: 12'4" x 9'10"  
Area: 65 sq. ft  
Counted as living area: No

Heated: No  
Finished: No  
Enclosed: Yes  
Contiguous: Yes  
Permitted: Yes  
Wet space: No  
Addition: No  
Conversion: No

**26** Floor 3 - Hall

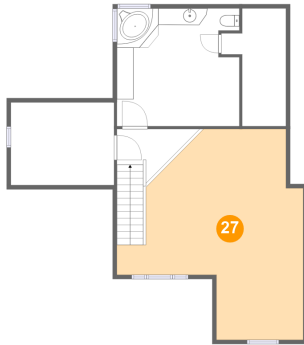


Dimensions: 8'7" x 6'5"  
Area: 72 sq. ft  
Counted as living area: Yes

Heated: Yes  
Finished: Yes  
Enclosed: Yes  
Contiguous: Yes  
Permitted: Yes  
Wet space: No  
Addition: No  
Conversion: No

**27** Floor 3 - Open To Below

---

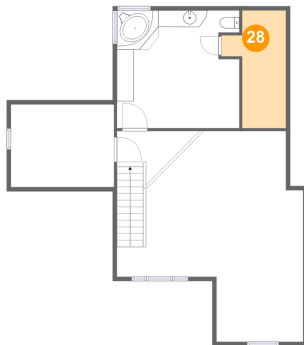


Dimensions: 22'3" x 25'1"  
Area: 380 sq. ft  
Counted as living area: No

Heated: No  
Finished: No  
Enclosed: No  
Contiguous: Yes  
Permitted: No  
Wet space: No  
Addition: No  
Conversion: No

**28** Floor 3 - W.I.C.

---



Dimensions: 7'9" x 14'0"  
Area: 80 sq. ft  
Counted as living area: No

Heated: Yes  
Finished: Yes  
Enclosed: Yes  
Contiguous: Yes  
Permitted: Yes  
Wet space: No  
Addition: No  
Conversion: No