

BASEMENT
51'2" x 30'9"

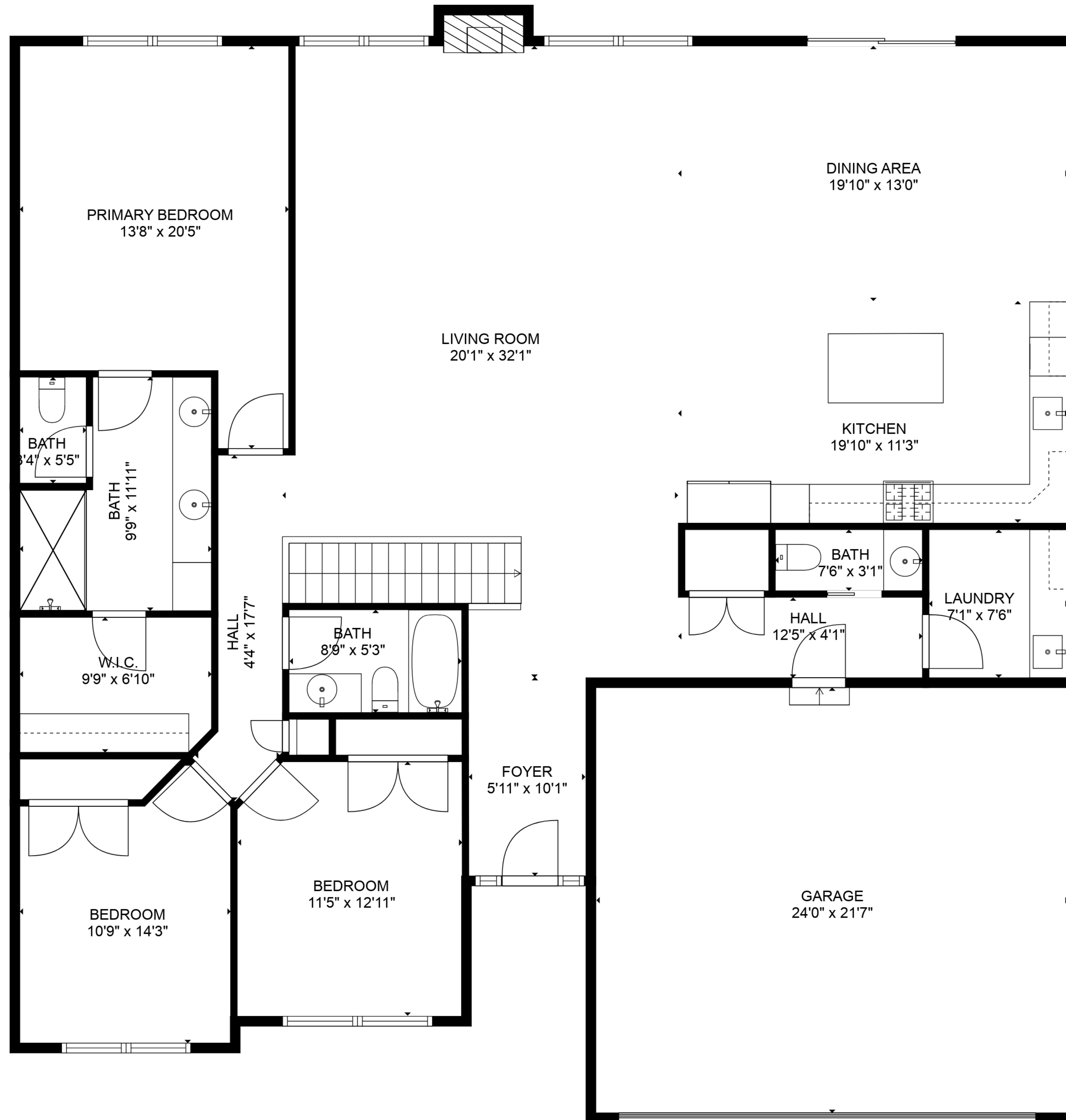
HALL
2'6" x 3'1"

ROOM
27'9" x 24'9"

TOTAL: 2244 sq. ft
BELOW GROUND: 65 sq. ft, FLOOR 2: 2179 sq. ft
EXCLUDED AREAS: BASEMENT: 1389 sq. ft, ROOM: 538 sq. ft, GARAGE: 519 sq. ft,
FIREPLACE: 8 sq. ft

Sizes and Dimensions are approximate

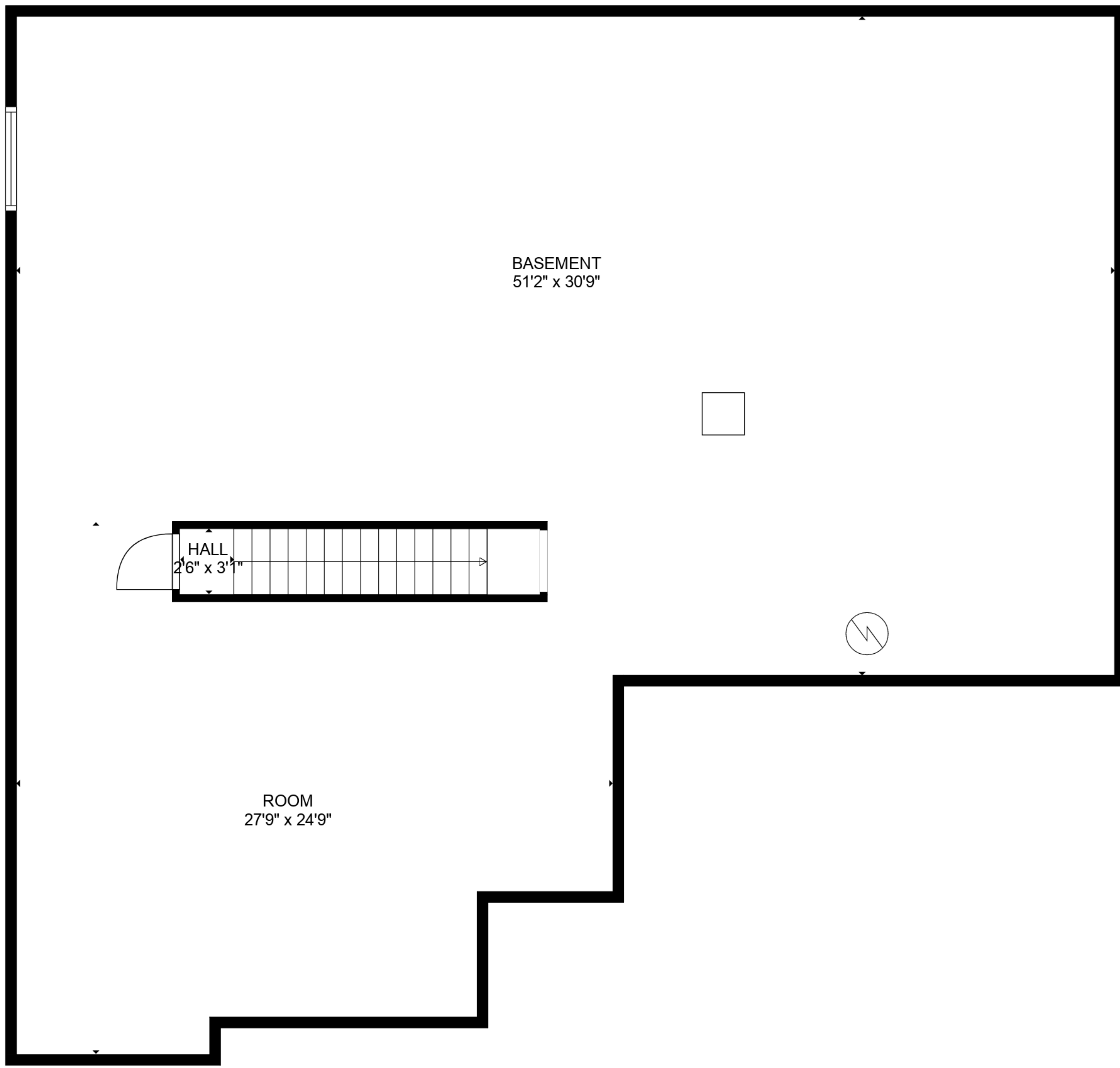




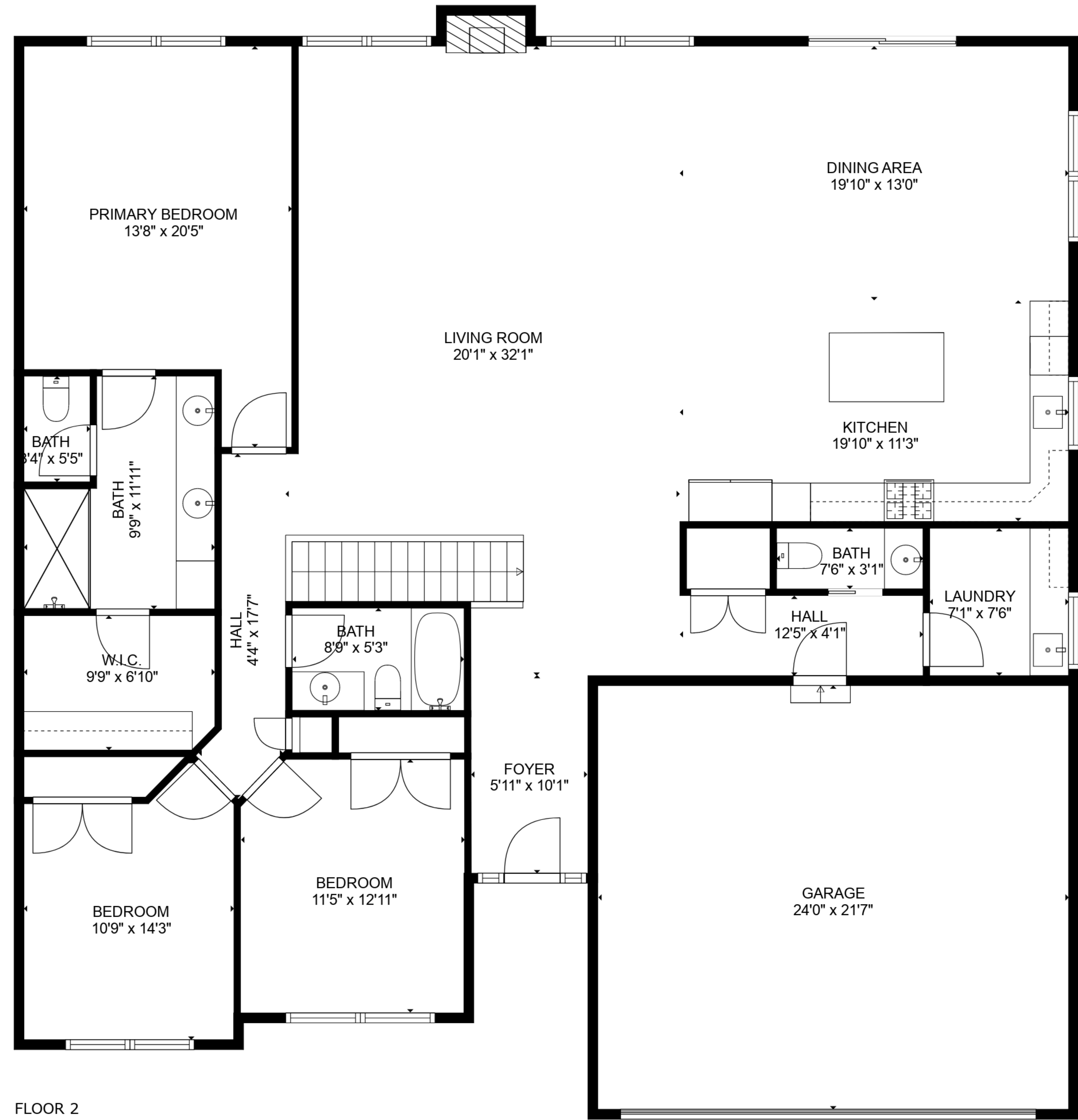
TOTAL: 2244 sq. ft
 BELOW GROUND: 65 sq. ft, FLOOR 2: 2179 sq. ft
 EXCLUDED AREAS: BASEMENT: 1389 sq. ft, ROOM: 538 sq. ft, GARAGE: 519 sq. ft,
 FIREPLACE: 8 sq. ft

Sizes and Dimensions are approximate





FLOOR 1



FLOOR 2

TOTAL: 2244 sq. ft
 BELOW GROUND: 65 sq. ft, FLOOR 2: 2179 sq. ft
 EXCLUDED AREAS: BASEMENT: 1389 sq. ft, ROOM: 538 sq. ft, GARAGE: 519 sq. ft,
 FIREPLACE: 8 sq. ft

Sizes and Dimensions are approximate

