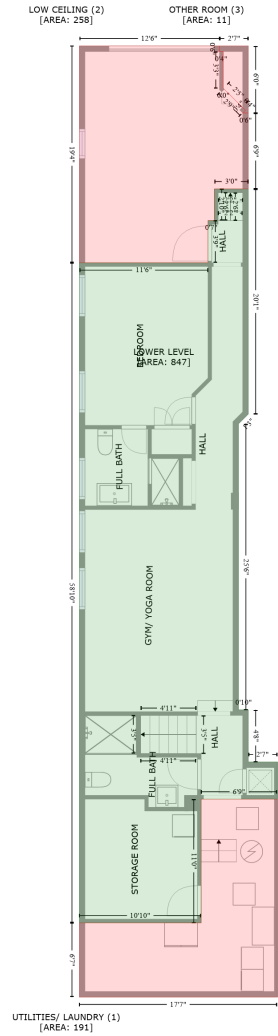


3220 Volta Place Northwest, Georgetown, Washington, District of Columbia, United States, 20007

Gross Living Area: 4184 sq. ft



Space	Area (sq. ft)	Calculation
LOWER LEVEL (Living area)	847	Coordinate Polygon Area Algorithm using inches $-((335.2 + 335.2) * (167 - 407.9) + (335.2 + 324.8) * (407.9 - 418.4) + (324.8 + 324.8) * (418.4 - 724.2) + (324.8 + 335.2) * (724.2 - 724.2) + (335.2 + 335.2) * (724.2 - 780) + (335.2 + 366.1) * (780 - 780) + (366.1 + 366.1) * (780 - 819.7) + (366.1 + 284.8) * (819.7 - 819.7) + (284.8 + 284.8) * (819.7 - 952.1) + (284.8 + 154.6) * (952.1 - 952.1) + (154.6 + 154.6) * (952.1 - 246) + (154.6 + 292.1) * (246 - 246) + (292.1 + 292.1) * (246 - 200.8) + (292.1 + 299) * (200.8 - 200.8) + (299 + 299) * (200.8 - 167) + (299 + 335.2) * (167 - 167)) * 0.5 * 0.00694$

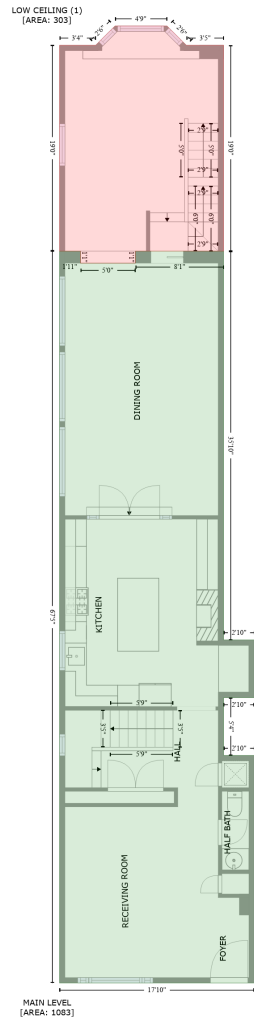
3220 Volta Place Northwest, Georgetown, Washington, District of Columbia, United States, 20007

Gross Living Area: 4184 sq. ft

Space	Area (sq. ft)	Calculation <small>Coordinate Polygon Area Algorithm using inches</small>
UTILITIES/ LAUNDRY (Non-living area)	191	$-\left((366.1 + 366.1) * (819.7 - 1031.5) + (366.1 + 154.6) * (1031.5 - 1031.5) + (154.6 + 154.6) * (1031.5 - 952.1) + (154.6 + 284.8) * (952.1 - 952.1) + (284.8 + 284.8) * (952.1 - 819.7) + (284.8 + 366.1) * (819.7 - 819.7)\right) * 0.5 * 0.00694$
LOW CEILING (Non-living area)	258	$-\left((304.4 + 304.4) * (14 - 20) + (304.4 + 308.4) * (20 - 20) + (308.4 + 308.4) * (20 - 59.2) + (308.4 + 332) * (59.2 - 82.9) + (332 + 329.2) * (82.9 - 85.7) + (329.2 + 335.2) * (85.7 - 85.7) + (335.2 + 335.2) * (85.7 - 167) + (335.2 + 299) * (167 - 167) + (299 + 299) * (167 - 200.8) + (299 + 292.1) * (200.8 - 200.8) + (292.1 + 292.1) * (200.8 - 246) + (292.1 + 154.6) * (246 - 246) + (154.6 + 154.6) * (246 - 14) + (154.6 + 304.4) * (14 - 14)\right) * 0.5 * 0.00694$
OTHER ROOM (Non-living area)	11	$-\left((335.2 + 335.2) * (14 - 85.7) + (335.2 + 329.2) * (85.7 - 85.7) + (329.2 + 332) * (85.7 - 82.9) + (332 + 329.2) * (82.9 - 79.9) + (329.2 + 308.4) * (79.9 - 59.2) + (308.4 + 308.4) * (59.2 - 59.2) + (308.4 + 308.4) * (59.2 - 20) + (308.4 + 304.4) * (20 - 20) + (304.4 + 304.4) * (20 - 14) + (304.4 + 335.2) * (14 - 14)\right) * 0.5 * 0.00694$

3220 Volta Place Northwest, Georgetown, Washington, District of Columbia, United States, 20007

Gross Living Area: 4184 sq. ft



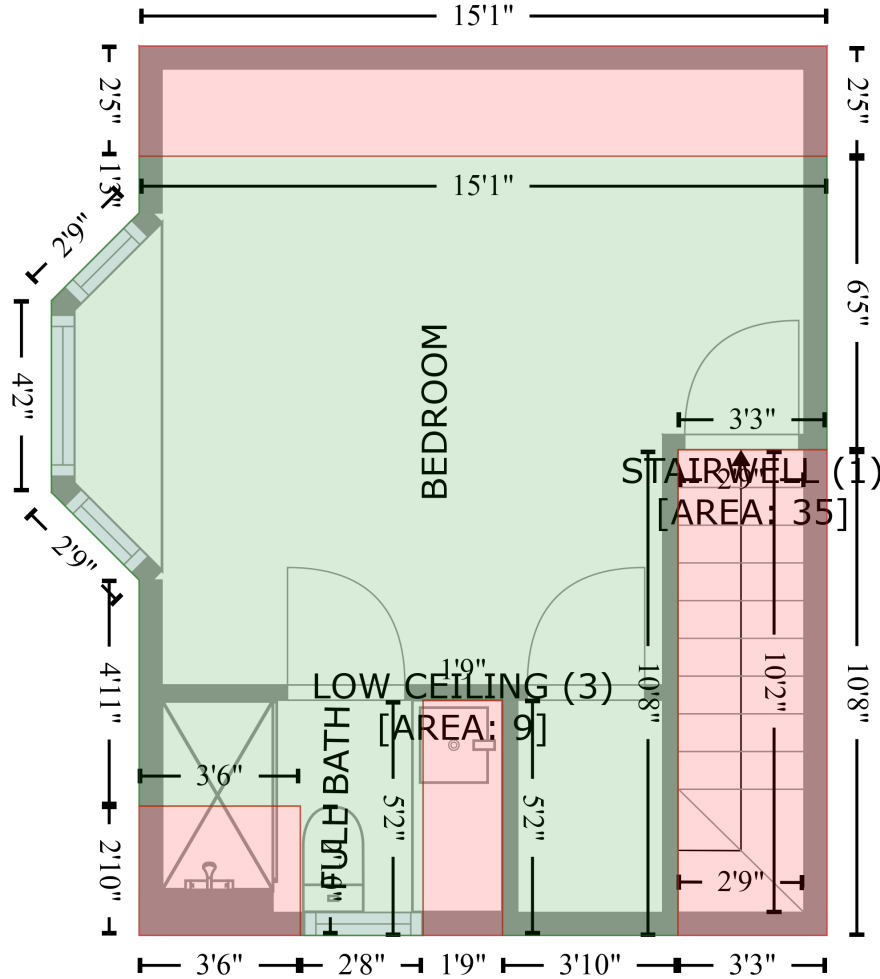
Space	Area (sq. ft)	Calculation
MAIN LEVEL (Living area)	1083	Coordinate Polygon Area Algorithm using inches $-((177.7 + 177.7) * (222.8 - 236.1) + (177.7 + 238.1) * (236.1 - 236.1) + (238.1 + 238.1) * (236.1 - 222.8) + (238.1 + 335.2) * (222.8 - 222.8) + (335.2 + 335.2) * (222.8 - 652.4) + (335.2 + 369.1) * (652.4 - 652.4) + (369.1 + 369.1) * (652.4 - 716.2) + (369.1 + 335.2) * (716.2 - 716.2) + (335.2 + 335.2) * (716.2 - 780) + (335.2 + 369.1) * (780 - 780) + (369.1 + 369.1) * (780 - 1031.5) + (369.1 + 154.6) * (1031.5 - 1031.5) + (154.6 + 154.6) * (1031.5 - 222.8) + (154.6 + 177.7) * (222.8 - 222.8)) * 0.5 * 0.00694$

3220 Volta Place Northwest, Georgetown, Washington, District of Columbia, United States, 20007

Gross Living Area: 4184 sq. ft

Space	Area (sq. ft)	Calculation <small>Coordinate Polygon Area Algorithm using inches</small>
LOW CEILING (Non-living area)	303	$\begin{aligned} & -((272.9 + 294.2) * (-25.9 - -4.7) + (294.2 + 335.2) * (-4.7 - -4.7) + (335.2 + 335.2) * (-4.7 - 222.8) + \\ & (335.2 + 238.1) * (222.8 - 222.8) + (238.1 + 238.1) * (222.8 - 236.1) + (238.1 + 177.7) * (236.1 - \\ & 236.1) + (177.7 + 177.7) * (236.1 - 222.8) + (177.7 + 154.6) * (222.8 - 222.8) + (154.6 + 154.6) * \\ & (222.8 - -4.7) + (154.6 + 194.4) * (-4.7 - -4.7) + (194.4 + 215.6) * (-4.7 - -25.9) + (215.6 + 272.9) * \\ & (-25.9 - -25.9)) * 0.5 * 0.00694 \end{aligned}$

LOW CEILING (4)
[AREA: 36]



LOW CEILING (2)
[AREA: 10]

ABOVE SITTING ROOM
[AREA: 215]

Space	Area (sq. ft)	Calculation <small>Coordinate Polygon Area Algorithm using inches</small>
ABOVE SITTING ROOM (Living area)	215	$-((335.2 + 335.2) * (24.2 - 101.3) + (335.2 + 296.1) * (101.3 - 101.3) + (296.1 + 296.1) * (101.3 - 228.8) + (296.1 + 250) * (228.8 - 228.8) + (250 + 250) * (228.8 - 167.1) + (250 + 229.2) * (167.1 - 167.1) + (229.2 + 229.2) * (167.1 - 228.8) + (229.2 + 196.9) * (228.8 - 228.8) + (196.9 + 196.9) * (228.8 - 194.9) + (196.9 + 154.6) * (194.9 - 194.9) + (154.6 + 154.6) * (194.9 - 135.6) + (154.6 + 131.6) * (135.6 - 112.5) + (131.6 + 131.6) * (112.5 - 62.2) + (131.6 + 154.6) * (62.2 - 39.1) + (154.6 + 154.6) * (39.1 - 24.2) + (154.6 + 335.2) * (24.2 - 24.2)) * 0.5 * 0.00694$

3220 Volta Place Northwest, Georgetown, Washington, District of Columbia, United States, 20007

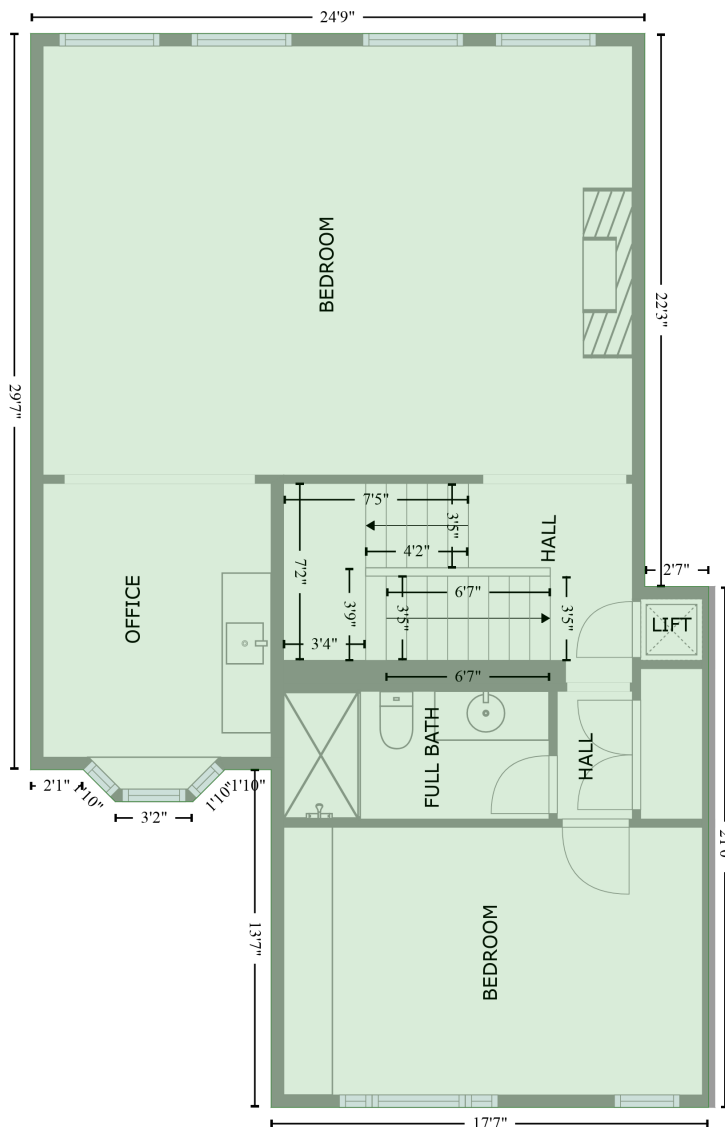
Gross Living Area: 4184 sq. ft

Space	Area (sq. ft)	Calculation <small>Coordinate Polygon Area Algorithm using inches</small>
STAIRWELL (Non-living area)	35	$-((335.2 + 335.2) * (101.3 - 228.8) + (335.2 + 296.1) * (228.8 - 228.8) + (296.1 + 296.1) * (228.8 - 101.3) + (296.1 + 335.2) * (101.3 - 101.3)) * 0.5 * 0.00694$
LOW CEILING (Non-living area)	10	$-((196.9 + 196.9) * (194.9 - 228.8) + (196.9 + 154.6) * (228.8 - 228.8) + (154.6 + 154.6) * (228.8 - 194.9) + (154.6 + 196.9) * (194.9 - 194.9)) * 0.5 * 0.00694$
LOW CEILING (Non-living area)	9	$-((250 + 250) * (167.1 - 228.8) + (250 + 229.2) * (228.8 - 228.8) + (229.2 + 229.2) * (228.8 - 167.1) + (229.2 + 250) * (167.1 - 167.1)) * 0.5 * 0.00694$
LOW CEILING (Non-living area)	36	$-((335.2 + 335.2) * (-4.7 - 24.2) + (335.2 + 154.6) * (24.2 - 24.2) + (154.6 + 154.6) * (24.2 - -4.7) + (154.6 + 335.2) * (-4.7 - -4.7)) * 0.5 * 0.00694$

3220 Volta Place Northwest, Georgetown, Washington, District of Columbia, United States, 20007

Gross Living Area: 4184 sq. ft

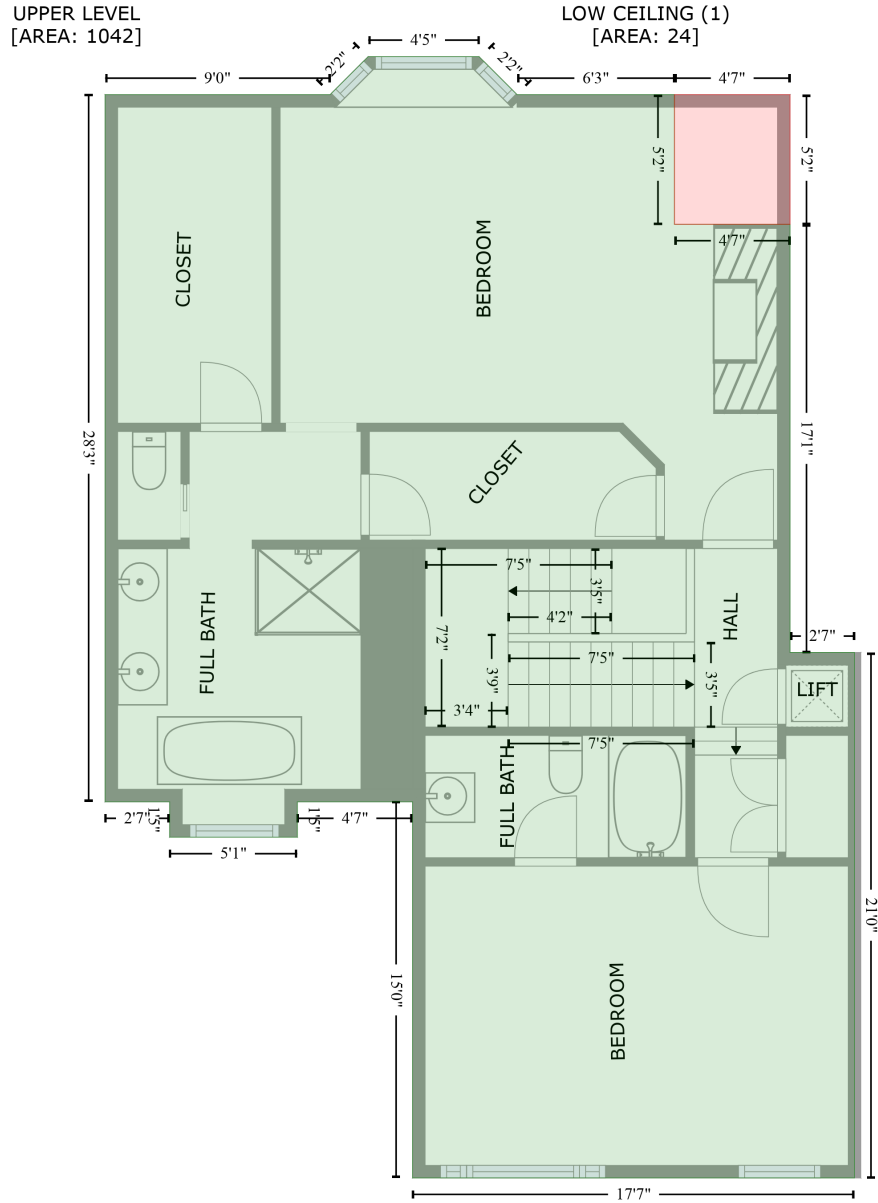
MID LEVEL
[AREA: 997]



Space	Area (sq. ft)	Calculation <small>Coordinate Polygon Area Algorithm using inches</small>
MID LEVEL (Living area)	997	$ \begin{aligned} & -((335.2 + 335.2) * (512.9 - 779.9) + (335.2 + 366.1) * (779.9 - 779.9) + (366.1 + 366.1) * (779.9 - \\ & 1031.5) + (366.1 + 154.6) * (1031.5 - 1031.5) + (154.6 + 154.6) * (1031.5 - 868.4) + (154.6 + \\ & 132.2) * (868.4 - 868.4) + (132.2 + 116.8) * (868.4 - 883.9) + (116.8 + 79.3) * (883.9 - 883.9) + \\ & (79.3 + 63.8) * (883.9 - 868.4) + (63.8 + 38.4) * (868.4 - 868.4) + (38.4 + 38.4) * (868.4 - 512.9) + \\ & (38.4 + 335.2) * (512.9 - 512.9)) * 0.5 * 0.00694 \end{aligned} $

3220 Volta Place Northwest, Georgetown, Washington, District of Columbia, United States, 20007

Gross Living Area: 4184 sq. ft



Space	Area (sq. ft)	Calculation
UPPER LEVEL (Living area)	1042	Coordinate Polygon Area Algorithm using inches $-((186.4 + 204.6) * (494.7 - 512.9) + (204.6 + 279.9) * (512.9 - 512.9) + (279.9 + 279.9) * (512.9 - 575) + (279.9 + 335.2) * (575 - 575) + (335.2 + 335.2) * (575 - 780) + (335.2 + 366.1) * (780 - 780) + (366.1 + 366.1) * (780 - 1031.5) + (366.1 + 154.6) * (1031.5 - 1031.5) + (154.6 + 154.6) * (1031.5 - 851.5) + (154.6 + 99.4) * (851.5 - 851.5) + (99.4 + 99.4) * (851.5 - 868.4) + (99.4 + 38.4) * (868.4 - 868.4) + (38.4 + 38.4) * (868.4 - 851.5) + (38.4 + 7.5) * (851.5 - 851.5) + (7.5 + 7.5) * (851.5 - 512.9) + (7.5 + 115.1) * (512.9 - 512.9) + (115.1 + 133.4) * (512.9 - 494.7) + (133.4 + 186.4) * (494.7 - 494.7)) * 0.5 * 0.00694$

3220 Volta Place Northwest, Georgetown, Washington, District of Columbia, United States, 20007

Gross Living Area: 4184 sq. ft

Space	Area (sq. ft)	Calculation <small>Coordinate Polygon Area Algorithm using inches</small>
LOW CEILING (Non-living area)	24	$-\left(\left(335.2 + 335.2\right) * \left(512.9 - 575\right) + \left(335.2 + 279.9\right) * \left(575 - 575\right) + \left(279.9 + 279.9\right) * \left(575 - 512.9\right) + \left(279.9 + 335.2\right) * \left(512.9 - 512.9\right)\right) * 0.5 * 0.00694$