

Home report

5215 Eden Avenue, Chesterfield, Cave Spring, Roanoke,
Roanoke County, Virginia, United States, 24018



Total Area: 1204 sq. ft

Floor 1: 0 sq. ft, Floor 2: 802 sq. ft, Floor 3: 402 sq. ft

Excluded: Basement 799 sq. ft, Covered porch 141 sq. ft, Porch 58 sq. ft, Fireplace 9 sq. ft, Low ceiling 43 sq. ft, Walls: 155 sq. ft

Property summary

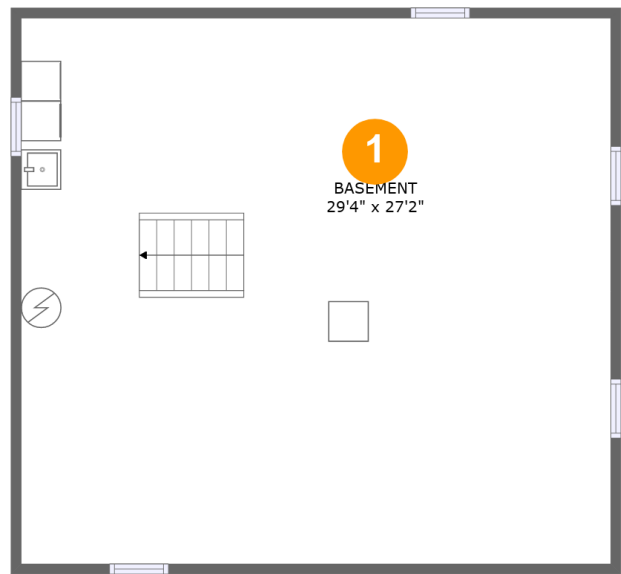
 **3** Floors

 **3** Bedrooms

 **1** Bathrooms

Home report

5215 Eden Avenue, Chesterfield, Cave Spring, Roanoke,
Roanoke County, Virginia, United States, 24018



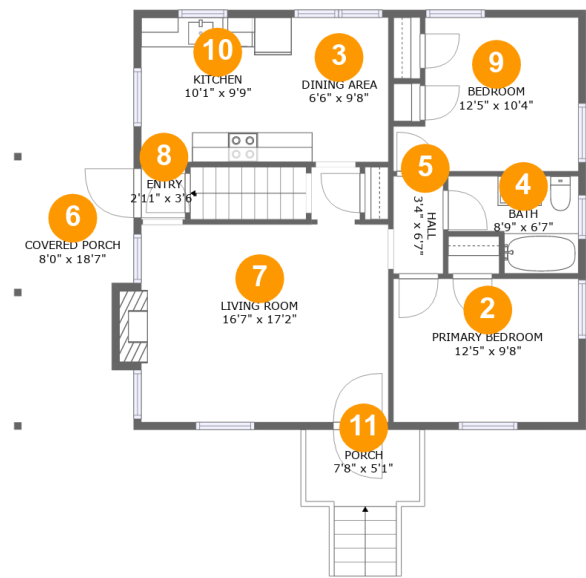
Room dimensions

Floor 1 Total:0sqft Excluded: 799sqft

#		Max Dimensions	sqft	Included
1	Basement	29'4" x 27'2"	799 sq. ft	No

Home report

5215 Eden Avenue, Chesterfield, Cave Spring, Roanoke,
Roanoke County, Virginia, United States, 24018



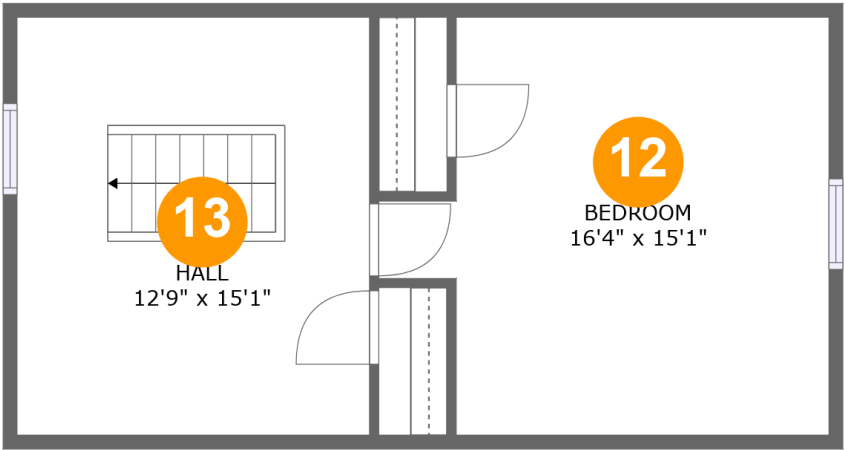
Room dimensions

Floor 2 Total:802sqft Excluded: 208sqft

#		Max Dimensions	sqft	Included
2	Primary Bedroom	12'5" x 9'8"	120 sq. ft	Yes
3	Dining Area	6'6" x 9'8"	63 sq. ft	Yes
4	Bath	8'9" x 6'7"	47 sq. ft	Yes
5	Hall	3'4" x 6'7"	22 sq. ft	Yes
6	Covered Porch	8'0" x 18'7"	141 sq. ft	No
7	Living Room	16'7" x 17'2"	240 sq. ft	Yes
8	Entry	2'11" x 3'6"	10 sq. ft	Yes
9	Bedroom	12'5" x 10'4"	113 sq. ft	Yes
10	Kitchen	10'1" x 9'9"	98 sq. ft	Yes
11	Porch	7'8" x 5'1"	58 sq. ft	No

Home report

5215 Eden Avenue, Chesterfield, Cave Spring, Roanoke,
Roanoke County, Virginia, United States, 24018



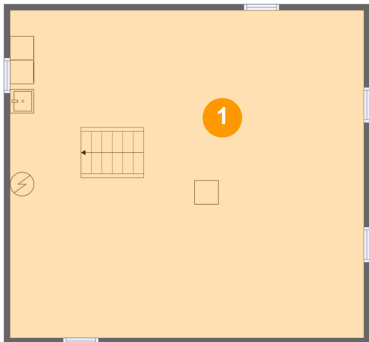
Room dimensions

Floor 3 Total:402sqft Excluded: 43sqft

#		Max Dimensions	sqft	Included
12	Bedroom	16'4" x 15'1"	192 sq. ft	Yes
13	Hall	12'9" x 15'1"	174 sq. ft	Yes

5215 Eden Avenue, Chesterfield, Cave Spring, Roanoke,
Roanoke County, Virginia, United States, 24018

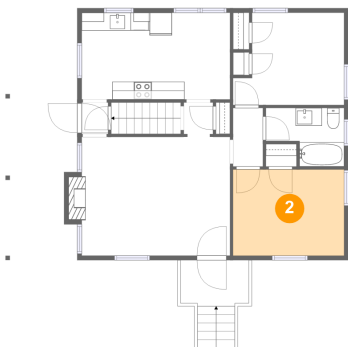
1 Floor 1 - Basement



Max Dimensions: 29'4" x 27'2"
Calculated Area: 799 sq. ft
Included: No

Heated: Yes
Finished: No
Enclosed: Yes
Contiguous: Yes
Permitted: Yes
Wet space: No
Addition: No
Conversion: No

2 Floor 2 - Primary Bedroom



Max Dimensions: 12'5" x 9'8"
Calculated Area: 120 sq. ft
Included: Yes

Heated: Yes
Finished: Yes
Enclosed: Yes
Contiguous: Yes
Permitted: Yes
Wet space: No
Addition: No
Conversion: No

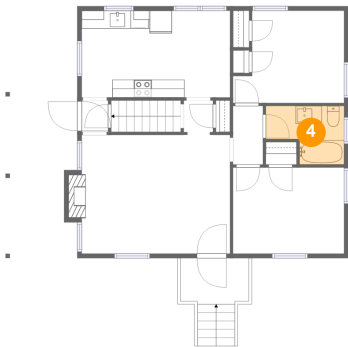
3 Floor 2 - Dining Area



Max Dimensions: 6'6" x 9'8"
Calculated Area: 63 sq. ft
Included: Yes

Heated: Yes
Finished: Yes
Enclosed: Yes
Contiguous: Yes
Permitted: Yes
Wet space: No
Addition: No
Conversion: No

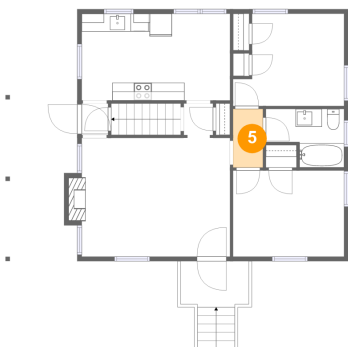
4 Floor 2 - Bath



Max Dimensions: 8'9" x 6'7"
Calculated Area: 47 sq. ft
Included: Yes

Heated: Yes
Finished: Yes
Enclosed: Yes
Contiguous: Yes
Permitted: Yes
Wet space: Yes
Addition: No
Conversion: No

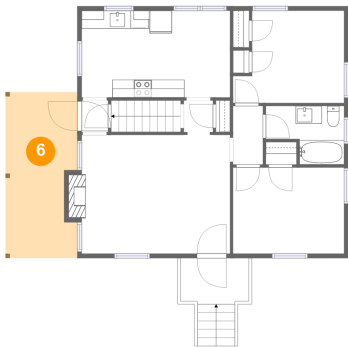
5 Floor 2 - Hall



Max Dimensions: 3'4" x 6'7"
Calculated Area: 22 sq. ft
Included: Yes

Heated: Yes
Finished: Yes
Enclosed: Yes
Contiguous: Yes
Permitted: Yes
Wet space: No
Addition: No
Conversion: No

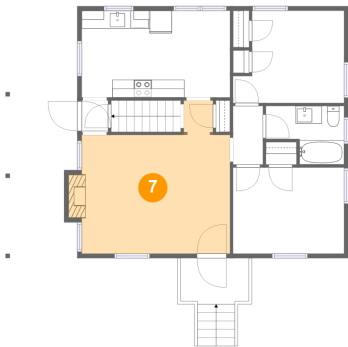
6 Floor 2 - Covered Porch



Max Dimensions: 8'0" x 18'7"
Calculated Area: 141 sq. ft
Included: No

Heated: No
Finished: Yes
Enclosed: No
Contiguous: Yes
Permitted: Yes
Wet space: No
Addition: No
Conversion: No

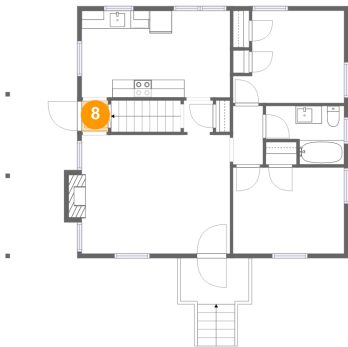
7 Floor 2 - Living Room



Max Dimensions: 16'7" x 17'2"
Calculated Area: 240 sq. ft
Included: Yes

Heated: Yes
Finished: Yes
Enclosed: Yes
Contiguous: Yes
Permitted: Yes
Wet space: No
Addition: No
Conversion: No

8 Floor 2 - Entry

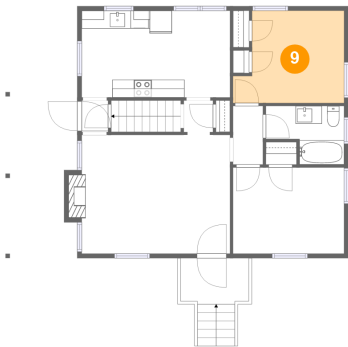


Max Dimensions: 2'11" x 3'6"
Calculated Area: 10 sq. ft
Included: Yes

Heated: Yes
Finished: Yes
Enclosed: Yes
Contiguous: Yes
Permitted: Yes
Wet space: No
Addition: No
Conversion: No

5215 Eden Avenue, Chesterfield, Cave Spring, Roanoke,
Roanoke County, Virginia, United States, 24018

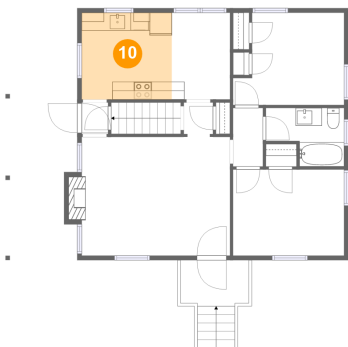
9 Floor 2 - Bedroom



Max Dimensions: 12'5" x 10'4"
Calculated Area: 113 sq. ft
Included: Yes

Heated: Yes
Finished: Yes
Enclosed: Yes
Contiguous: Yes
Permitted: Yes
Wet space: No
Addition: No
Conversion: No

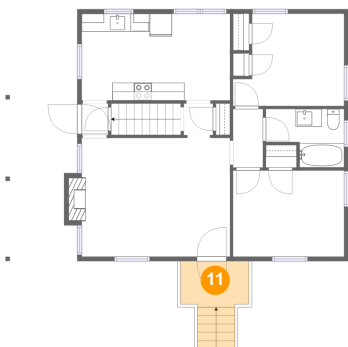
10 Floor 2 - Kitchen



Max Dimensions: 10'1" x 9'9"
Calculated Area: 98 sq. ft
Included: Yes

Heated: Yes
Finished: Yes
Enclosed: Yes
Contiguous: Yes
Permitted: Yes
Wet space: No
Addition: No
Conversion: No

11 Floor 2 - Porch

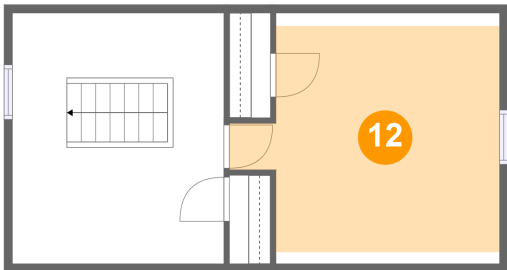


Max Dimensions: 7'8" x 5'1"
Calculated Area: 58 sq. ft
Included: No

Heated: No
Finished: Yes
Enclosed: No
Contiguous: Yes
Permitted: Yes
Wet space: No
Addition: No
Conversion: No

5215 Eden Avenue, Chesterfield, Cave Spring, Roanoke,
Roanoke County, Virginia, United States, 24018

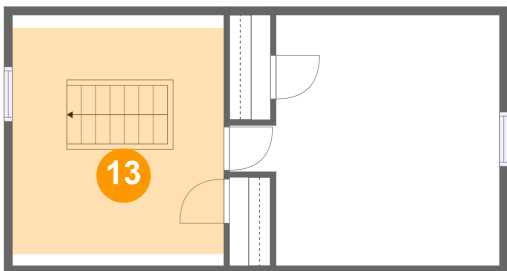
12 Floor 3 - Bedroom



Max Dimensions: 16'4" x 15'1"
Calculated Area: 192 sq. ft
Included: Yes

Heated: Yes
Finished: Yes
Enclosed: Yes
Contiguous: Yes
Permitted: Yes
Wet space: No
Addition: No
Conversion: No

13 Floor 3 - Hall



Max Dimensions: 12'9" x 15'1"
Calculated Area: 174 sq. ft
Included: Yes

Heated: Yes
Finished: Yes
Enclosed: Yes
Contiguous: Yes
Permitted: Yes
Wet space: No
Addition: No
Conversion: No