



Home report


508 Hemlock Shores Drive, Goodview, Bedford County, Virginia,
United States, 24095




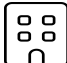
Property summary


**0**
Garages


**4**
Bedrooms

**3**
Bathrooms

**1**
Half baths

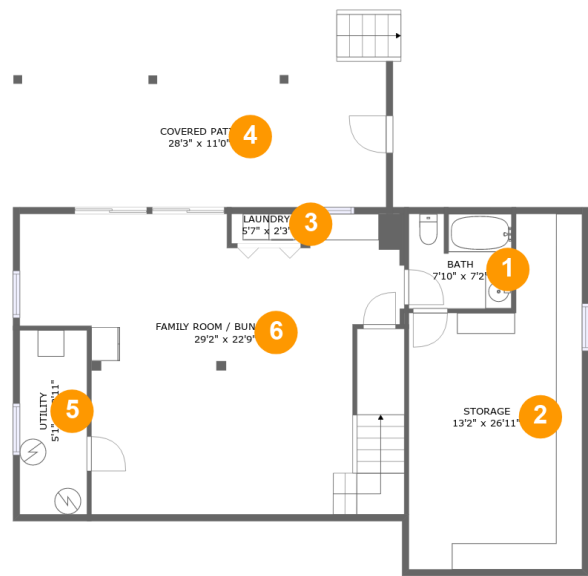
**3**
Floors

**2,662**
Gross living
area sqft

**3,820**
Total sqft

Home report

508 Hemlock Shores Drive, Goodview, Bedford County, Virginia,
United States, 24095



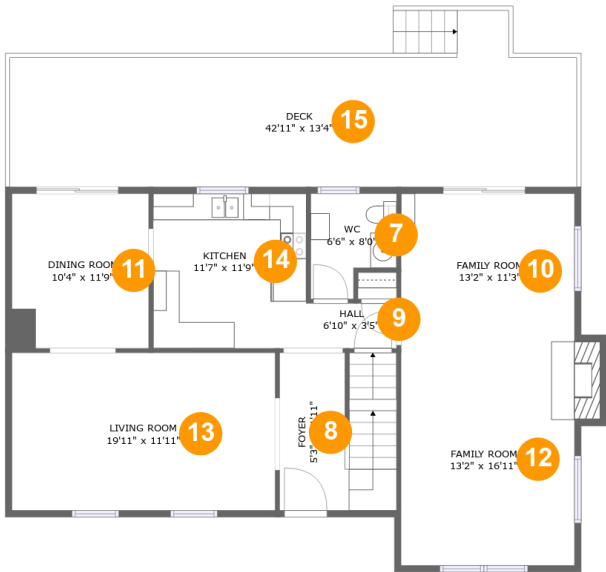
Room dimensions

Floor 1 Total sqft: 1412 Living area: 702

#		Max Dimensions	sqft	Included
1	Bath	7'10" x 7'2"	55 sq. ft	Yes
2	Storage	13'2" x 26'11"	293 sq. ft	No
3	Laundry	5'7" x 2'3"	13 sq. ft	Yes
4	Covered Patio	28'3" x 11'0"	312 sq. ft	No
5	Utility	5'1" x 13'11"	71 sq. ft	No
6	Family Room / Bunk Room	29'2" x 22'9"	566 sq. ft	Yes

Home report

508 Hemlock Shores Drive, Goodview, Bedford County, Virginia,
United States, 24095



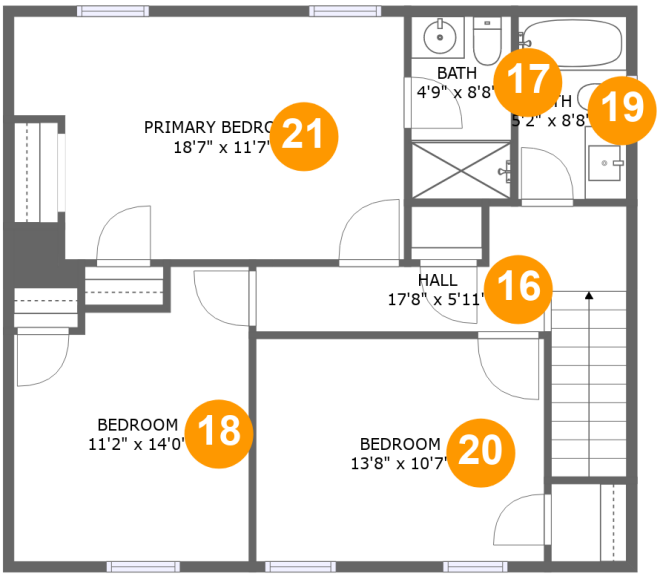
Room dimensions

Floor 2 Total sqft: 1597 Living area: 1149

#		Max Dimensions	sqft	Included
7	WC	6'6" x 8'0"	44 sq. ft	Yes
8	Foyer	5'3" x 11'11"	104 sq. ft	Yes
9	Hall	6'10" x 3'5"	23 sq. ft	Yes
10	Family Room	13'2" x 11'3"	147 sq. ft	Yes
11	Dining Room	10'4" x 11'9"	121 sq. ft	Yes
12	Family Room	13'2" x 16'11"	234 sq. ft	Yes
13	Living Room	19'11" x 11'11"	238 sq. ft	Yes
14	Kitchen	11'7" x 11'9"	136 sq. ft	Yes
15	Deck	42'11" x 13'4"	435 sq. ft	No

Home report

508 Hemlock Shores Drive, Goodview, Bedford County, Virginia,
United States, 24095

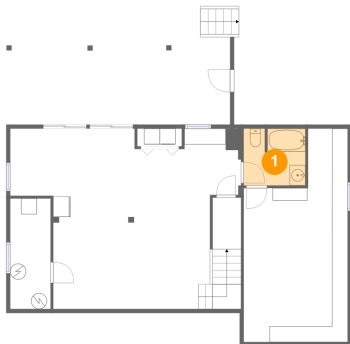


Room dimensions

Floor 3 Total sqft: 811 Living area: 811

#		Max Dimensions	sqft	Included
16	Hall	17'8" x 5'11"	98 sq. ft	Yes
17	Bath	4'9" x 8'8"	41 sq. ft	Yes
18	Bedroom	11'2" x 14'0"	137 sq. ft	Yes
19	Bath	5'2" x 8'8"	45 sq. ft	Yes
20	Bedroom	13'8" x 10'7"	145 sq. ft	Yes
21	Primary Bedroom	18'7" x 11'7"	198 sq. ft	Yes

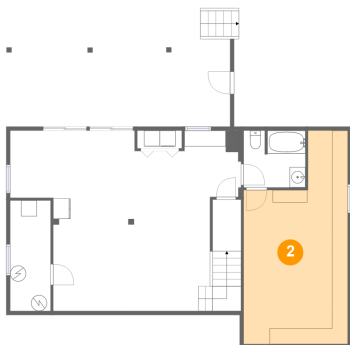
1 Floor 1 - Bath



Max Dimensions: 7'10" x 7'2"
Calculated Area: 55 sq. ft
Included: Yes

Heated: Yes
Finished: Yes
Enclosed: Yes
Contiguous: Yes
Permitted: Yes
Wet space: Yes
Addition: No
Conversion: No

2 Floor 1 - Storage

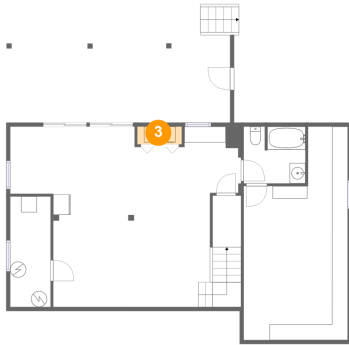


Max Dimensions: 13'2" x 26'11"
Calculated Area: 293 sq. ft
Included: No

Heated: No
Finished: No
Enclosed: No
Contiguous: Yes
Permitted: Yes
Wet space: No
Addition: No
Conversion: No

508 Hemlock Shores Drive, Goodview, Bedford County, Virginia,
United States, 24095

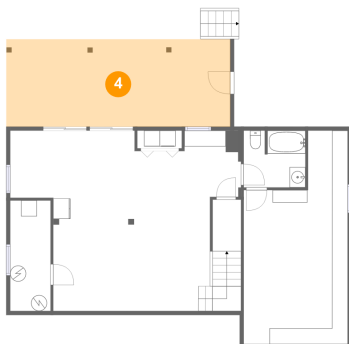
3 Floor 1 - Laundry



Max Dimensions: 5'7" x 2'3"
Calculated Area: 13 sq. ft
Included: Yes

Heated: Yes
Finished: Yes
Enclosed: Yes
Contiguous: Yes
Permitted: Yes
Wet space: No
Addition: No
Conversion: No

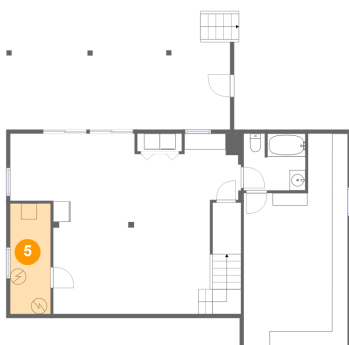
4 Floor 1 - Covered Patio



Max Dimensions: 28'3" x 11'0"
Calculated Area: 312 sq. ft
Included: No

Heated: No
Finished: Yes
Enclosed: No
Contiguous: Yes
Permitted: Yes
Wet space: No
Addition: No
Conversion: No

5 Floor 1 - Utility



Max Dimensions: 5'1" x 13'11"
Calculated Area: 71 sq. ft
Included: No

Heated: Yes
Finished: No
Enclosed: Yes
Contiguous: Yes
Permitted: Yes
Wet space: No
Addition: No
Conversion: No

6 Floor 1 - Family Room / Bunk Room



Max Dimensions: 29'2" x 22'9"
Calculated Area: 566 sq. ft
Included: Yes

Heated: Yes
Finished: Yes
Enclosed: Yes
Contiguous: Yes
Permitted: Yes
Wet space: No
Addition: No
Conversion: No

7 Floor 2 - WC



Max Dimensions: 6'6" x 8'0"
Calculated Area: 44 sq. ft
Included: Yes

Heated: Yes
Finished: Yes
Enclosed: Yes
Contiguous: Yes
Permitted: Yes
Wet space: Yes
Addition: No
Conversion: No

8 Floor 2 - Foyer



Max Dimensions: 5'3" x 11'11"
Calculated Area: 104 sq. ft
Included: Yes

Heated: Yes
Finished: Yes
Enclosed: Yes
Contiguous: Yes
Permitted: Yes
Wet space: No
Addition: No
Conversion: No

9 Floor 2 - Hall



Max Dimensions: 6'10" x 3'5"
Calculated Area: 23 sq. ft
Included: Yes

Heated: Yes
Finished: Yes
Enclosed: Yes
Contiguous: Yes
Permitted: Yes
Wet space: No
Addition: No
Conversion: No

10 Floor 2 - Family Room



Max Dimensions: 13'2" x 11'3"
Calculated Area: 147 sq. ft
Included: Yes

Heated: Yes
Finished: Yes
Enclosed: Yes
Contiguous: Yes
Permitted: Yes
Wet space: No
Addition: No
Conversion: No

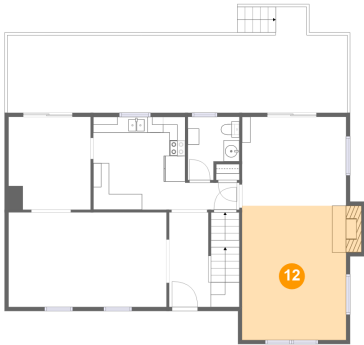
11 Floor 2 - Dining Room



Max Dimensions: 10'4" x 11'9"
Calculated Area: 121 sq. ft
Included: Yes

Heated: Yes
Finished: Yes
Enclosed: Yes
Contiguous: Yes
Permitted: Yes
Wet space: No
Addition: No
Conversion: No

12 Floor 2 - Family Room



Max Dimensions: 13'2" x 16'11"
Calculated Area: 234 sq. ft
Included: Yes

Heated: Yes
Finished: Yes
Enclosed: Yes
Contiguous: Yes
Permitted: Yes
Wet space: No
Addition: No
Conversion: No

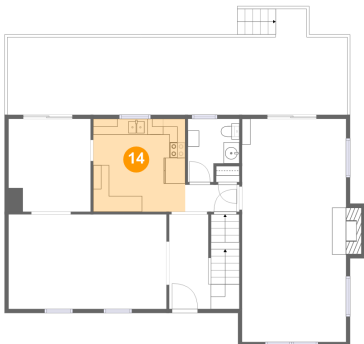
13 Floor 2 - Living Room



Max Dimensions: 19'11" x 11'11"
Calculated Area: 238 sq. ft
Included: Yes

Heated: Yes
Finished: Yes
Enclosed: Yes
Contiguous: Yes
Permitted: Yes
Wet space: No
Addition: No
Conversion: No

14 Floor 2 - Kitchen



Max Dimensions: 11'7" x 11'9"
Calculated Area: 136 sq. ft
Included: Yes

Heated: Yes
Finished: Yes
Enclosed: Yes
Contiguous: Yes
Permitted: Yes
Wet space: No
Addition: No
Conversion: No

508 Hemlock Shores Drive, Goodview, Bedford County, Virginia,
United States, 24095

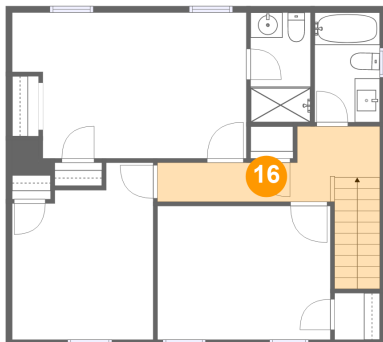
15 Floor 2 - Deck



Max Dimensions: 42'11" x 13'4"
Calculated Area: 435 sq. ft
Included: No

Heated: No
Finished: Yes
Enclosed: No
Contiguous: Yes
Permitted: Yes
Wet space: No
Addition: No
Conversion: No

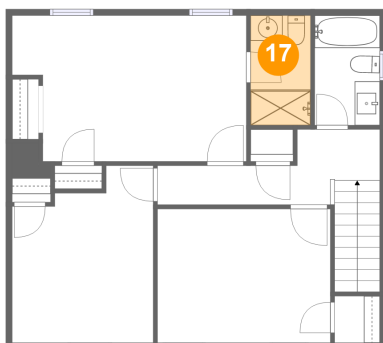
16 Floor 3 - Hall



Max Dimensions: 17'8" x 5'11"
Calculated Area: 98 sq. ft
Included: Yes

Heated: Yes
Finished: Yes
Enclosed: Yes
Contiguous: Yes
Permitted: Yes
Wet space: No
Addition: No
Conversion: No

17 Floor 3 - Bath

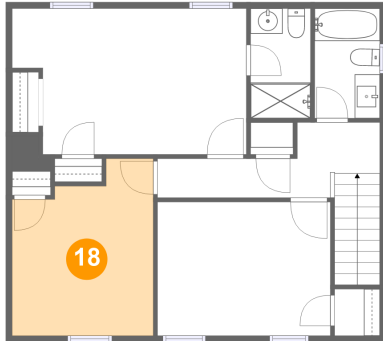


Max Dimensions: 4'9" x 8'8"
Calculated Area: 41 sq. ft
Included: Yes

Heated: Yes
Finished: Yes
Enclosed: Yes
Contiguous: Yes
Permitted: Yes
Wet space: Yes
Addition: No
Conversion: No

508 Hemlock Shores Drive, Goodview, Bedford County, Virginia,
United States, 24095

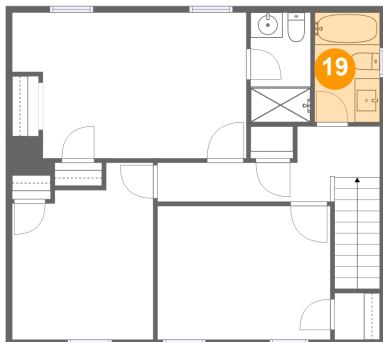
18 Floor 3 - Bedroom



Max Dimensions: 11'2" x 14'0"
Calculated Area: 137 sq. ft
Included: Yes

Heated: Yes
Finished: Yes
Enclosed: Yes
Contiguous: Yes
Permitted: Yes
Wet space: No
Addition: No
Conversion: No

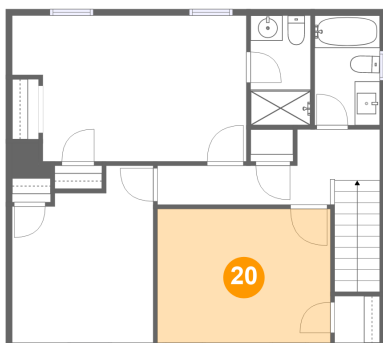
19 Floor 3 - Bath



Max Dimensions: 5'2" x 8'8"
Calculated Area: 45 sq. ft
Included: Yes

Heated: Yes
Finished: Yes
Enclosed: Yes
Contiguous: Yes
Permitted: Yes
Wet space: Yes
Addition: No
Conversion: No

20 Floor 3 - Bedroom



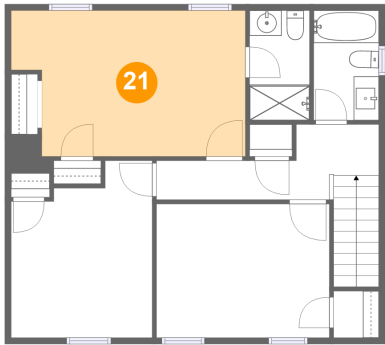
Max Dimensions: 13'8" x 10'7"
Calculated Area: 145 sq. ft
Included: Yes

Heated: Yes
Finished: Yes
Enclosed: Yes
Contiguous: Yes
Permitted: Yes
Wet space: No
Addition: No
Conversion: No

Home report

508 Hemlock Shores Drive, Goodview, Bedford County, Virginia,
United States, 24095

21 Floor 3 - Primary Bedroom



Max Dimensions: 18'7" x 11'7"
Calculated Area: 198 sq. ft
Included: Yes

Heated: Yes
Finished: Yes
Enclosed: Yes
Contiguous: Yes
Permitted: Yes
Wet space: No
Addition: No
Conversion: No