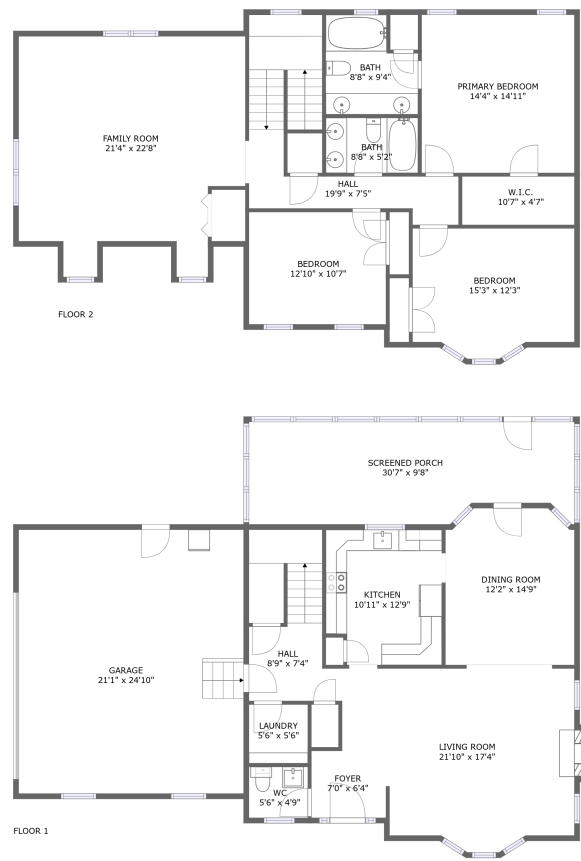




Home report


685 Highland Drive, Nolan Hills, Madison, Madison County, Alabama, United States, 35758




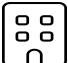
Property summary


 **1** Garages


 **3** Bedrooms

 **2** Bathrooms

 **1** Half baths

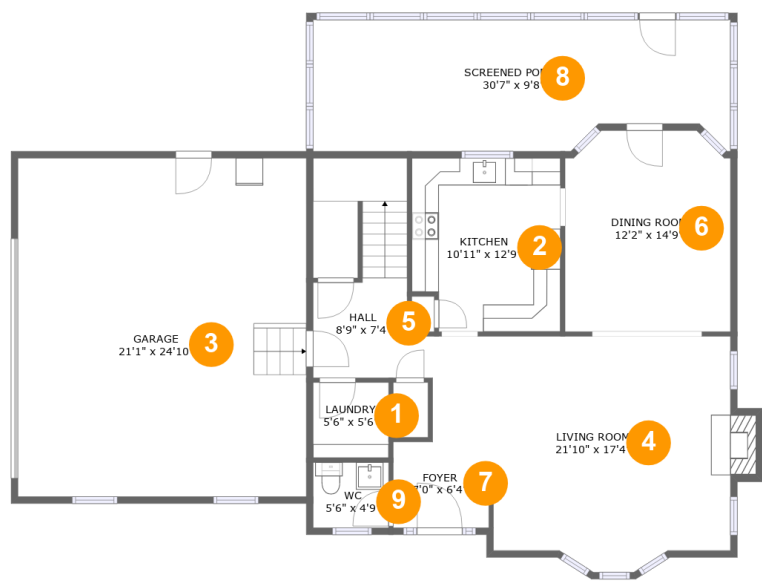
 **2** Floors

 **2,475** Gross living area sqft

 **3,276** Total sqft

Home report

685 Highland Drive, Nolan Hills, Madison, Madison County, Alabama, United States, 35758



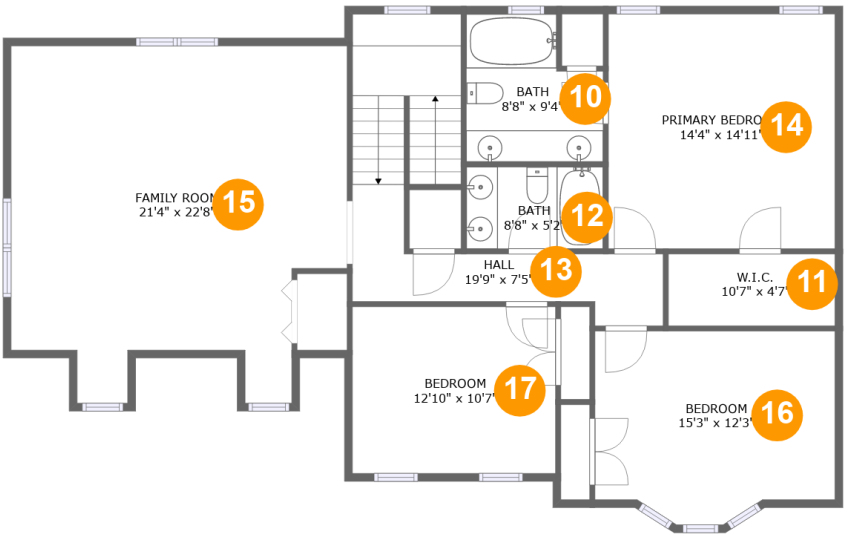
Room dimensions

Floor 1 Total sqft: 1817 Living area: 1016

#		Dimensions	sqft	Counted as living area
1	Laundry	5'6" x 5'6"	31 sq. ft	Yes
2	Kitchen	10'11" x 12'9"	133 sq. ft	Yes
3	Garage	21'1" x 24'10"	525 sq. ft	No
4	Living Room	21'10" x 17'4"	326 sq. ft	Yes
5	Hall	8'9" x 7'4"	114 sq. ft	Yes
6	Dining Room	12'2" x 14'9"	173 sq. ft	Yes
7	Foyer	7'0" x 6'4"	46 sq. ft	Yes
8	Screened Porch	30'7" x 9'8"	276 sq. ft	No
9	WC	5'6" x 4'9"	27 sq. ft	Yes

Home report

685 Highland Drive, Nolan Hills, Madison, Madison County, Alabama, United States, 35758



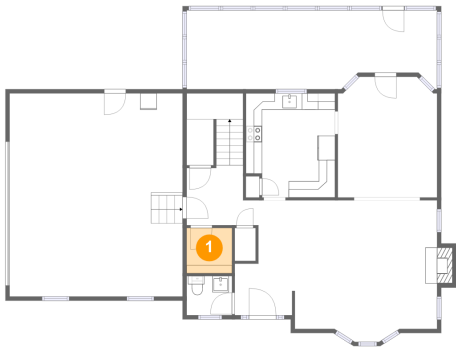
Room dimensions

Floor 2 Total sqft: 1459 Living area: 1459

#		Dimensions	sqft	Counted as living area
10	Bath	8'8" x 9'4"	71 sq. ft	Yes
11	W.I.C.	10'7" x 4'7"	48 sq. ft	Yes
12	Bath	8'8" x 5'2"	45 sq. ft	Yes
13	Hall	19'9" x 7'5"	153 sq. ft	Yes
14	Primary Bedroom	14'4" x 14'11"	214 sq. ft	Yes
15	Family Room	21'4" x 22'8"	414 sq. ft	Yes
16	Bedroom	15'3" x 12'3"	171 sq. ft	Yes
17	Bedroom	12'10" x 10'7"	136 sq. ft	Yes

685 Highland Drive, Nolan Hills, Madison, Madison County,
Alabama, United States, 35758

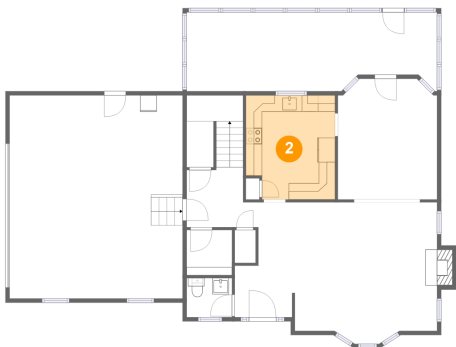
1 Floor 1 - Laundry



Dimensions: 5'6" x 5'6"
Area: 31 sq. ft
Counted as living area: Yes

Heated: Yes
Finished: Yes
Enclosed: Yes
Contiguous: Yes
Permitted: Yes
Wet space: No
Addition: No
Conversion: No

2 Floor 1 - Kitchen

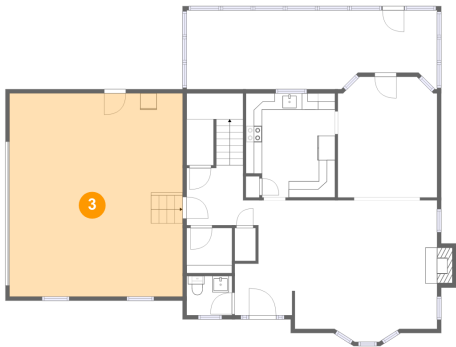


Dimensions: 10'11" x 12'9"
Area: 133 sq. ft
Counted as living area: Yes

Heated: Yes
Finished: Yes
Enclosed: Yes
Contiguous: Yes
Permitted: Yes
Wet space: No
Addition: No
Conversion: No

685 Highland Drive, Nolan Hills, Madison, Madison County,
Alabama, United States, 35758

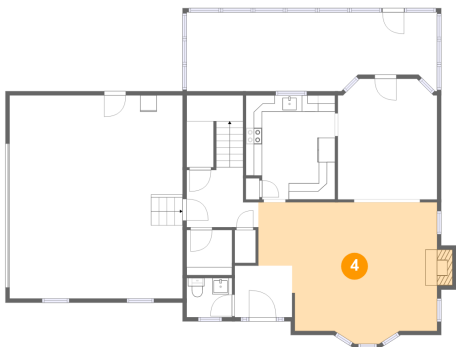
3 Floor 1 - Garage



Dimensions: 21'1" x 24'10"
Area: 525 sq. ft
Counted as living area: No

Heated: No
Finished: No
Enclosed: Yes
Contiguous: Yes
Permitted: Yes
Wet space: No
Addition: No
Conversion: No

4 Floor 1 - Living Room



Dimensions: 21'10" x 17'4"
Area: 326 sq. ft
Counted as living area: Yes

Heated: Yes
Finished: Yes
Enclosed: Yes
Contiguous: Yes
Permitted: Yes
Wet space: No
Addition: No
Conversion: No

5 Floor 1 - Hall

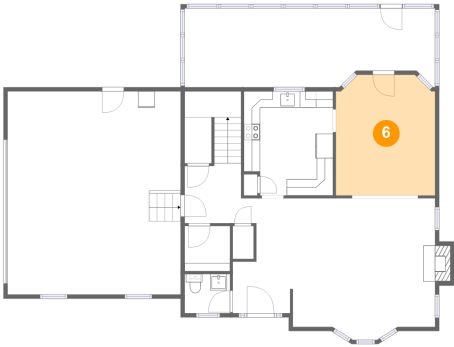


Dimensions: 8'9" x 7'4"
Area: 114 sq. ft
Counted as living area: Yes

Heated: Yes
Finished: Yes
Enclosed: Yes
Contiguous: Yes
Permitted: Yes
Wet space: No
Addition: No
Conversion: No

685 Highland Drive, Nolan Hills, Madison, Madison County,
Alabama, United States, 35758

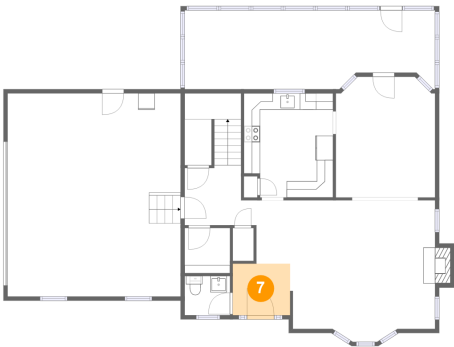
6 Floor 1 - Dining Room



Dimensions: 12'2" x 14'9"
Area: 173 sq. ft
Counted as living area: Yes

Heated: Yes
Finished: Yes
Enclosed: Yes
Contiguous: Yes
Permitted: Yes
Wet space: No
Addition: No
Conversion: No

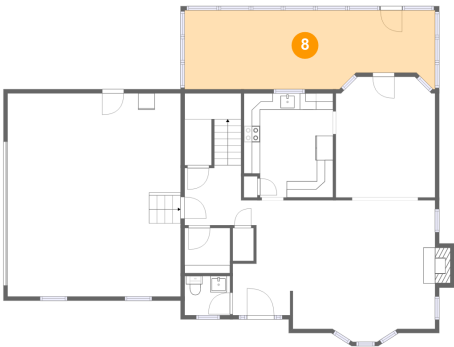
7 Floor 1 - Foyer



Dimensions: 7'0" x 6'4"
Area: 46 sq. ft
Counted as living area: Yes

Heated: Yes
Finished: Yes
Enclosed: Yes
Contiguous: Yes
Permitted: Yes
Wet space: No
Addition: No
Conversion: No

8 Floor 1 - Screened Porch



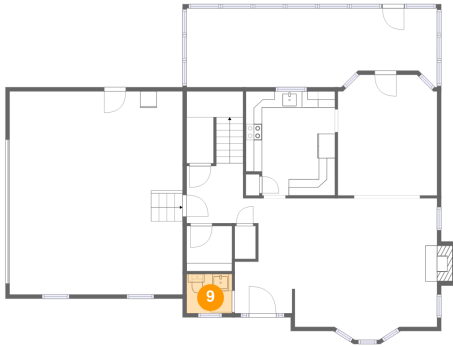
Dimensions: 30'7" x 9'8"
Area: 276 sq. ft
Counted as living area: No

Heated: No
Finished: Yes
Enclosed: No
Contiguous: Yes
Permitted: Yes
Wet space: No
Addition: No
Conversion: No

Home report

685 Highland Drive, Nolan Hills, Madison, Madison County,
Alabama, United States, 35758

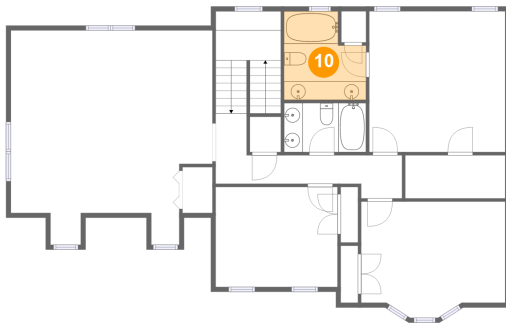
9 Floor 1 - WC



Dimensions: 5'6" x 4'9"
Area: 27 sq. ft
Counted as living area: Yes

Heated: Yes
Finished: Yes
Enclosed: Yes
Contiguous: Yes
Permitted: Yes
Wet space: Yes
Addition: No
Conversion: No

10 Floor 2 - Bath



Dimensions: 8'8" x 9'4"
Area: 71 sq. ft
Counted as living area: Yes

Heated: Yes
Finished: Yes
Enclosed: Yes
Contiguous: Yes
Permitted: Yes
Wet space: Yes
Addition: No
Conversion: No

11 Floor 2 - W.I.C.



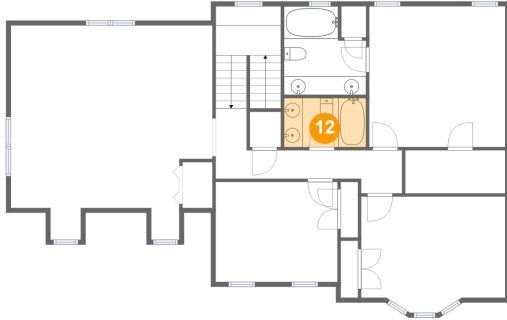
Dimensions: 10'7" x 4'7"
Area: 48 sq. ft
Counted as living area: Yes

Heated: Yes
Finished: Yes
Enclosed: Yes
Contiguous: Yes
Permitted: Yes
Wet space: No
Addition: No
Conversion: No

Home report

685 Highland Drive, Nolan Hills, Madison, Madison County,
Alabama, United States, 35758

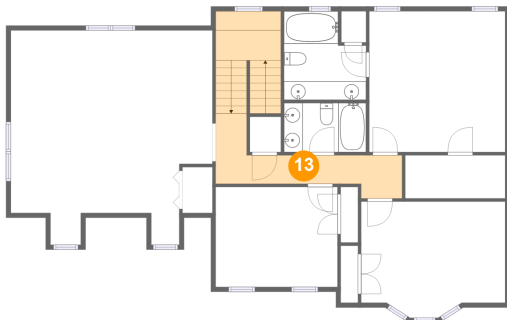
12 Floor 2 - Bath



Dimensions: 8'8" x 5'2"
Area: 45 sq. ft
Counted as living area: Yes

Heated: Yes
Finished: Yes
Enclosed: Yes
Contiguous: Yes
Permitted: Yes
Wet space: Yes
Addition: No
Conversion: No

13 Floor 2 - Hall



Dimensions: 19'9" x 7'5"
Area: 153 sq. ft
Counted as living area: Yes

Heated: Yes
Finished: Yes
Enclosed: Yes
Contiguous: Yes
Permitted: Yes
Wet space: No
Addition: No
Conversion: No

14 Floor 2 - Primary Bedroom



Dimensions: 14'4" x 14'11"
Area: 214 sq. ft
Counted as living area: Yes

Heated: Yes
Finished: Yes
Enclosed: Yes
Contiguous: Yes
Permitted: Yes
Wet space: No
Addition: No
Conversion: No

Home report

685 Highland Drive, Nolan Hills, Madison, Madison County,
Alabama, United States, 35758

15 Floor 2 - Family Room



Dimensions: 21'4" x 22'8"
Area: 414 sq. ft
Counted as living area: Yes

Heated: Yes
Finished: Yes
Enclosed: Yes
Contiguous: Yes
Permitted: Yes
Wet space: No
Addition: No
Conversion: No

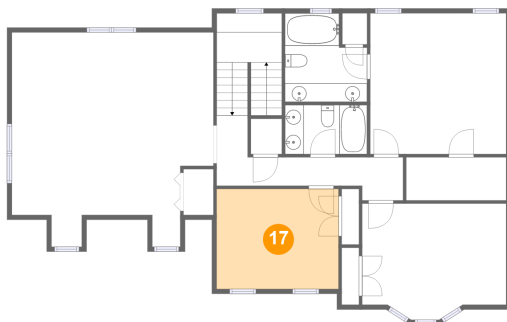
16 Floor 2 - Bedroom



Dimensions: 15'3" x 12'3"
Area: 171 sq. ft
Counted as living area: Yes

Heated: Yes
Finished: Yes
Enclosed: Yes
Contiguous: Yes
Permitted: Yes
Wet space: No
Addition: No
Conversion: No

17 Floor 2 - Bedroom



Dimensions: 12'10" x 10'7"
Area: 136 sq. ft
Counted as living area: Yes

Heated: Yes
Finished: Yes
Enclosed: Yes
Contiguous: Yes
Permitted: Yes
Wet space: No
Addition: No
Conversion: No