



Home report


10012 Dellcastle Road, Watkins Mill, Montgomery Village,
Montgomery County, Maryland, United States, 20886





Property summary


 **1** Garages


 **4** Bedrooms

 **1** Bathrooms

 **3** Half baths

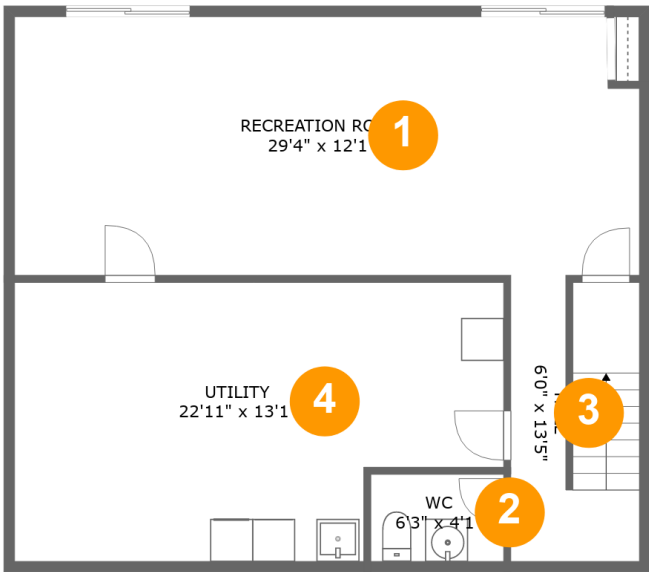
 **3** Floors

 **2,932** Gross living area sqft

 **3,865** Total sqft

Home report

10012 Dellcastle Road, Watkins Mill, Montgomery Village,
Montgomery County, Maryland, United States, 20886



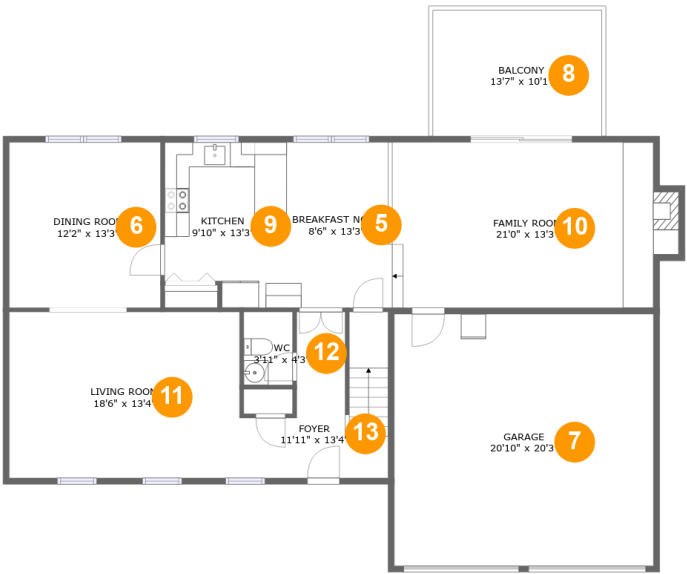
Room dimensions

Floor 1 Total sqft: 804 Living area: 518

#		Dimensions	sqft	Counted as living area
1	Recreation Room	29'4" x 12'1"	350 sq. ft	Yes
2	WC	6'3" x 4'1"	25 sq. ft	Yes
3	Hall	6'0" x 13'5"	76 sq. ft	Yes
4	Utility	22'11" x 13'1"	271 sq. ft	No

Home report

10012 Dellcastle Road, Watkins Mill, Montgomery Village,
Montgomery County, Maryland, United States, 20886



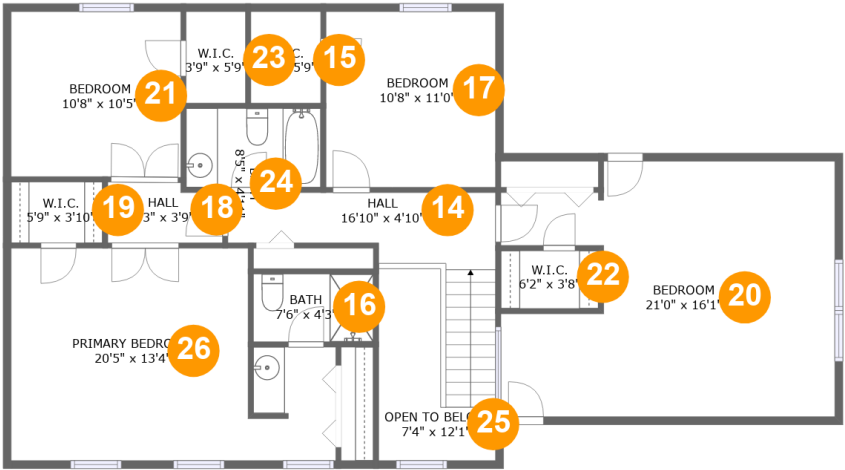
Room dimensions

Floor 2 Total sqft: 1779 Living area: 1196

#		Dimensions	sqft	Counted as living area
5	Breakfast Nook	8'6" x 13'3"	113 sq. ft	Yes
6	Dining Room	12'2" x 13'3"	161 sq. ft	Yes
7	Garage	20'10" x 20'3"	421 sq. ft	No
8	Balcony	13'7" x 10'1"	137 sq. ft	No
9	Kitchen	9'10" x 13'3"	120 sq. ft	Yes
10	Family Room	21'0" x 13'3"	289 sq. ft	Yes
11	Living Room	18'6" x 13'4"	247 sq. ft	Yes
12	WC	3'11" x 4'3"	23 sq. ft	Yes
13	Foyer	11'11" x 13'4"	117 sq. ft	Yes

Home report

10012 Dellcastle Road, Watkins Mill, Montgomery Village,
Montgomery County, Maryland, United States, 20886



Room dimensions

Floor 3 Total sqft: 1282 Living area: 1218

#		Dimensions	sqft	Counted as living area
14	Hall	16'10" x 4'10"	95 sq. ft	Yes
15	W.I.C.	4'5" x 5'9"	25 sq. ft	Yes
16	Bath	7'6" x 4'3"	32 sq. ft	Yes
17	Bedroom	10'8" x 11'0"	118 sq. ft	Yes
18	Hall	7'3" x 3'9"	26 sq. ft	Yes
19	W.I.C.	5'9" x 3'10"	22 sq. ft	Yes
20	Bedroom	21'0" x 16'1"	296 sq. ft	Yes
21	Bedroom	10'8" x 10'5"	111 sq. ft	Yes
22	W.I.C.	6'2" x 3'8"	22 sq. ft	Yes
23	W.I.C.	3'9" x 5'9"	21 sq. ft	Yes
24	Bath	8'5" x 4'11"	42 sq. ft	Yes

Home report

10012 Dellcastle Road, Watkins Mill, Montgomery Village,
Montgomery County, Maryland, United States, 20886

#		Dimensions	sqft	Counted as living area
25	Open To Below	7'4" x 12'1"	58 sq. ft	No
26	Primary Bedroom	20'5" x 13'4"	236 sq. ft	Yes

10012 Dellcastle Road, Watkins Mill, Montgomery Village,
Montgomery County, Maryland, United States, 20886

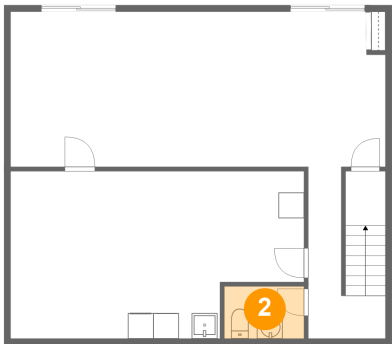
1 Floor 1 - Recreation Room



Dimensions: 29'4" x 12'1"
Area: 350 sq. ft
Counted as living area: Yes

Heated: Yes
Finished: Yes
Enclosed: Yes
Contiguous: Yes
Permitted: Yes
Wet space: No
Addition: No
Conversion: No

2 Floor 1 - WC

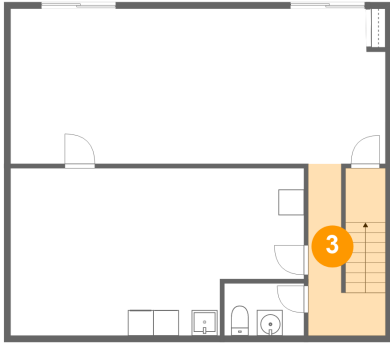


Dimensions: 6'3" x 4'1"
Area: 25 sq. ft
Counted as living area: Yes

Heated: Yes
Finished: Yes
Enclosed: Yes
Contiguous: Yes
Permitted: Yes
Wet space: Yes
Addition: No
Conversion: No

10012 Dellcastle Road, Watkins Mill, Montgomery Village,
Montgomery County, Maryland, United States, 20886

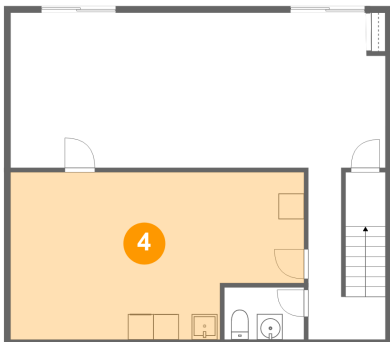
3 Floor 1 - Hall



Dimensions: 6'0" x 13'5"
Area: 76 sq. ft
Counted as living area: Yes

Heated: Yes
Finished: Yes
Enclosed: Yes
Contiguous: Yes
Permitted: Yes
Wet space: No
Addition: No
Conversion: No

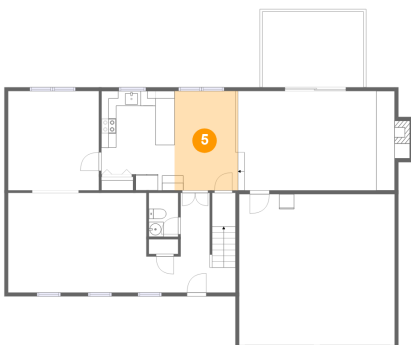
4 Floor 1 - Utility



Dimensions: 22'11" x 13'1"
Area: 271 sq. ft
Counted as living area: No

Heated: Yes
Finished: No
Enclosed: Yes
Contiguous: Yes
Permitted: Yes
Wet space: No
Addition: No
Conversion: No

5 Floor 2 - Breakfast Nook

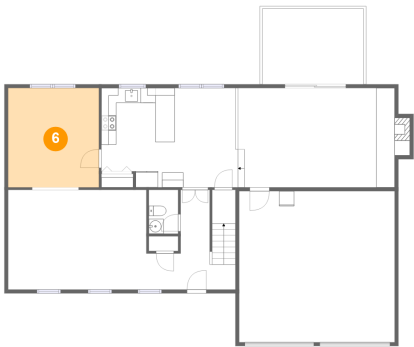


Dimensions: 8'6" x 13'3"
Area: 113 sq. ft
Counted as living area: Yes

Heated: Yes
Finished: Yes
Enclosed: Yes
Contiguous: Yes
Permitted: Yes
Wet space: No
Addition: No
Conversion: No

10012 Dellcastle Road, Watkins Mill, Montgomery Village,
Montgomery County, Maryland, United States, 20886

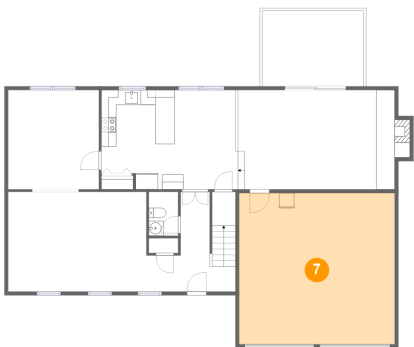
6 Floor 2 - Dining Room



Dimensions: 12'2" x 13'3"
Area: 161 sq. ft
Counted as living area: Yes

Heated: Yes
Finished: Yes
Enclosed: Yes
Contiguous: Yes
Permitted: Yes
Wet space: No
Addition: No
Conversion: No

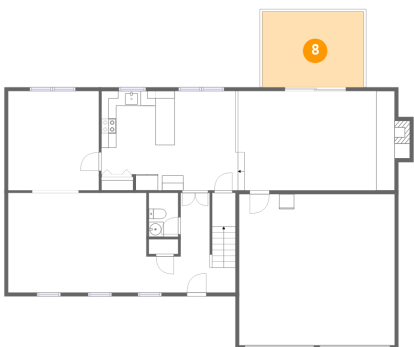
7 Floor 2 - Garage



Dimensions: 20'10" x 20'3"
Area: 421 sq. ft
Counted as living area: No

Heated: No
Finished: No
Enclosed: Yes
Contiguous: Yes
Permitted: Yes
Wet space: No
Addition: No
Conversion: No

8 Floor 2 - Balcony



Dimensions: 13'7" x 10'1"
Area: 137 sq. ft
Counted as living area: No

Heated: No
Finished: Yes
Enclosed: No
Contiguous: Yes
Permitted: Yes
Wet space: No
Addition: No
Conversion: No

Home report

10012 Dellcastle Road, Watkins Mill, Montgomery Village,
Montgomery County, Maryland, United States, 20886

9 Floor 2 - Kitchen



Dimensions: 9'10" x 13'3"
Area: 120 sq. ft
Counted as living area: Yes

Heated: Yes
Finished: Yes
Enclosed: Yes
Contiguous: Yes
Permitted: Yes
Wet space: No
Addition: No
Conversion: No

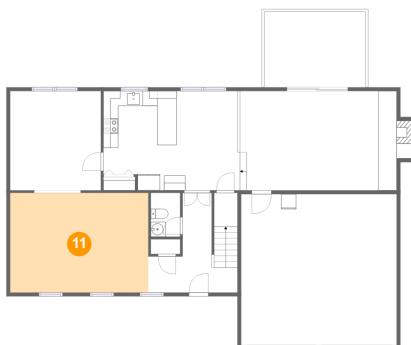
10 Floor 2 - Family Room



Dimensions: 21'0" x 13'3"
Area: 289 sq. ft
Counted as living area: Yes

Heated: Yes
Finished: Yes
Enclosed: Yes
Contiguous: Yes
Permitted: Yes
Wet space: No
Addition: No
Conversion: No

11 Floor 2 - Living Room



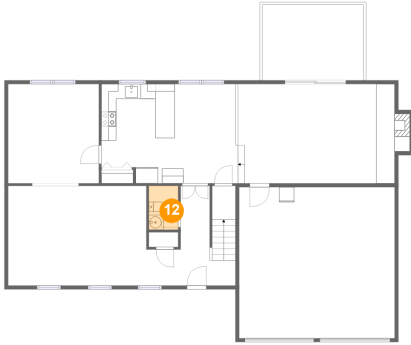
Dimensions: 18'6" x 13'4"
Area: 247 sq. ft
Counted as living area: Yes

Heated: Yes
Finished: Yes
Enclosed: Yes
Contiguous: Yes
Permitted: Yes
Wet space: No
Addition: No
Conversion: No

Home report

10012 Dellcastle Road, Watkins Mill, Montgomery Village,
Montgomery County, Maryland, United States, 20886

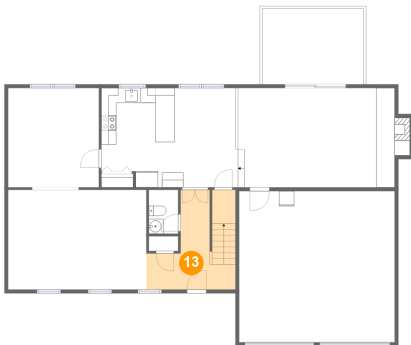
12 Floor 2 - WC



Dimensions: 3'11" x 4'3"
Area: 23 sq. ft
Counted as living area: Yes

Heated: Yes
Finished: Yes
Enclosed: Yes
Contiguous: Yes
Permitted: Yes
Wet space: No
Addition: No
Conversion: No

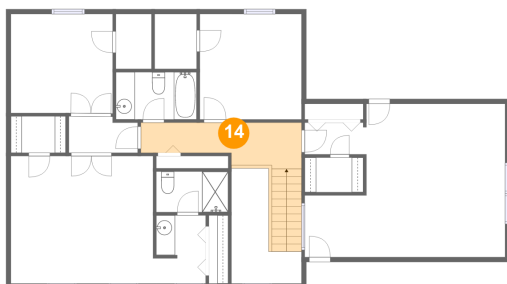
13 Floor 2 - Foyer



Dimensions: 11'11" x 13'4"
Area: 117 sq. ft
Counted as living area: Yes

Heated: Yes
Finished: Yes
Enclosed: Yes
Contiguous: Yes
Permitted: Yes
Wet space: No
Addition: No
Conversion: No

14 Floor 3 - Hall



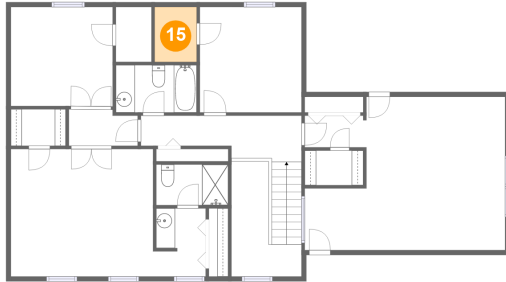
Dimensions: 16'10" x 4'10"
Area: 95 sq. ft
Counted as living area: Yes

Heated: Yes
Finished: Yes
Enclosed: Yes
Contiguous: Yes
Permitted: Yes
Wet space: No
Addition: No
Conversion: No

Home report

10012 Dellcastle Road, Watkins Mill, Montgomery Village,
Montgomery County, Maryland, United States, 20886

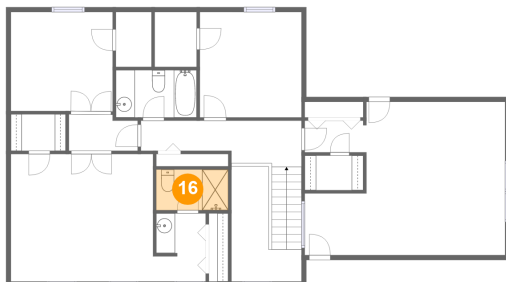
15 Floor 3 - W.I.C.



Dimensions: 4'5" x 5'9"
Area: 25 sq. ft
Counted as living area: Yes

Heated: Yes
Finished: Yes
Enclosed: Yes
Contiguous: Yes
Permitted: Yes
Wet space: No
Addition: No
Conversion: No

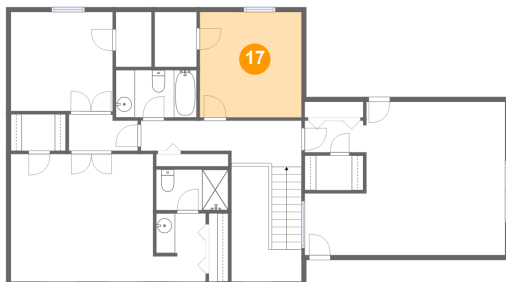
16 Floor 3 - Bath



Dimensions: 7'6" x 4'3"
Area: 32 sq. ft
Counted as living area: Yes

Heated: Yes
Finished: Yes
Enclosed: Yes
Contiguous: Yes
Permitted: Yes
Wet space: Yes
Addition: No
Conversion: No

17 Floor 3 - Bedroom



Dimensions: 10'8" x 11'0"
Area: 118 sq. ft
Counted as living area: Yes

Heated: Yes
Finished: Yes
Enclosed: Yes
Contiguous: Yes
Permitted: Yes
Wet space: No
Addition: No
Conversion: No

Home report

10012 Dellcastle Road, Watkins Mill, Montgomery Village,
Montgomery County, Maryland, United States, 20886

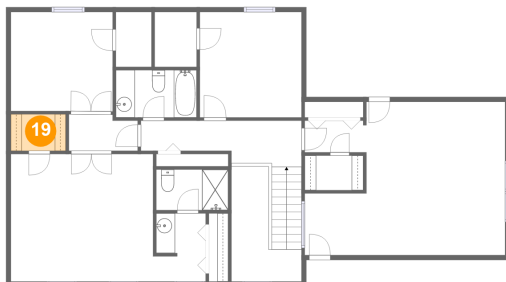
18 Floor 3 - Hall



Dimensions: 7'3" x 3'9"
Area: 26 sq. ft
Counted as living area: Yes

Heated: Yes
Finished: Yes
Enclosed: Yes
Contiguous: Yes
Permitted: Yes
Wet space: No
Addition: No
Conversion: No

19 Floor 3 - W.I.C.



Dimensions: 5'9" x 3'10"
Area: 22 sq. ft
Counted as living area: Yes

Heated: Yes
Finished: Yes
Enclosed: Yes
Contiguous: Yes
Permitted: Yes
Wet space: No
Addition: No
Conversion: No

20 Floor 3 - Bedroom



Dimensions: 21'0" x 16'1"
Area: 296 sq. ft
Counted as living area: Yes

Heated: Yes
Finished: Yes
Enclosed: Yes
Contiguous: Yes
Permitted: Yes
Wet space: No
Addition: No
Conversion: No

Home report

10012 Dellcastle Road, Watkins Mill, Montgomery Village,
Montgomery County, Maryland, United States, 20886

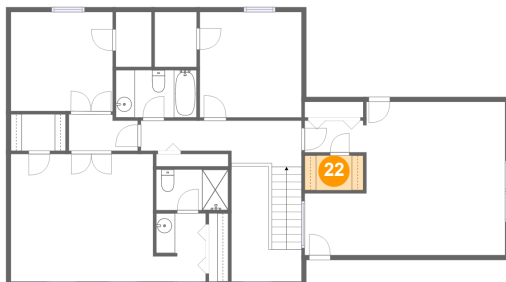
21 Floor 3 - Bedroom



Dimensions: 10'8" x 10'5"
Area: 111 sq. ft
Counted as living area: Yes

Heated: Yes
Finished: Yes
Enclosed: Yes
Contiguous: Yes
Permitted: Yes
Wet space: No
Addition: No
Conversion: No

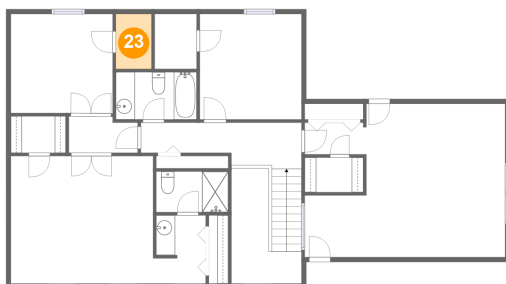
22 Floor 3 - W.I.C.



Dimensions: 6'2" x 3'8"
Area: 22 sq. ft
Counted as living area: Yes

Heated: Yes
Finished: Yes
Enclosed: Yes
Contiguous: Yes
Permitted: Yes
Wet space: No
Addition: No
Conversion: No

23 Floor 3 - W.I.C.



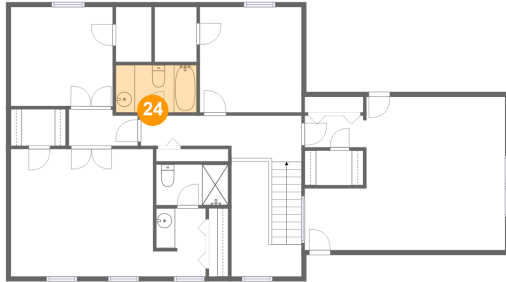
Dimensions: 3'9" x 5'9"
Area: 21 sq. ft
Counted as living area: Yes

Heated: Yes
Finished: Yes
Enclosed: Yes
Contiguous: Yes
Permitted: Yes
Wet space: No
Addition: No
Conversion: No

Home report

10012 Dellcastle Road, Watkins Mill, Montgomery Village,
Montgomery County, Maryland, United States, 20886

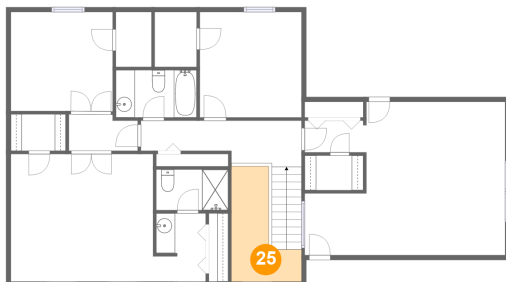
24 Floor 3 - Bath



Dimensions: 8'5" x 4'11"
Area: 42 sq. ft
Counted as living area: Yes

Heated: Yes
Finished: Yes
Enclosed: Yes
Contiguous: Yes
Permitted: Yes
Wet space: Yes
Addition: No
Conversion: No

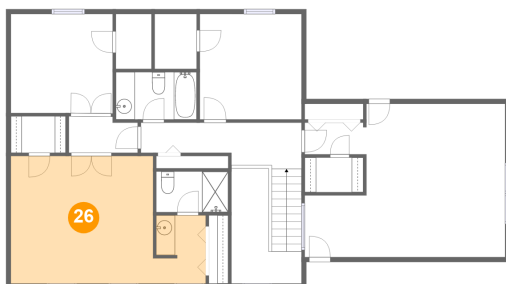
25 Floor 3 - Open To Below



Dimensions: 7'4" x 12'1"
Area: 58 sq. ft
Counted as living area: No

Heated: No
Finished: No
Enclosed: No
Contiguous: Yes
Permitted: No
Wet space: No
Addition: No
Conversion: No

26 Floor 3 - Primary Bedroom



Dimensions: 20'5" x 13'4"
Area: 236 sq. ft
Counted as living area: Yes

Heated: Yes
Finished: Yes
Enclosed: Yes
Contiguous: Yes
Permitted: Yes
Wet space: No
Addition: No
Conversion: No