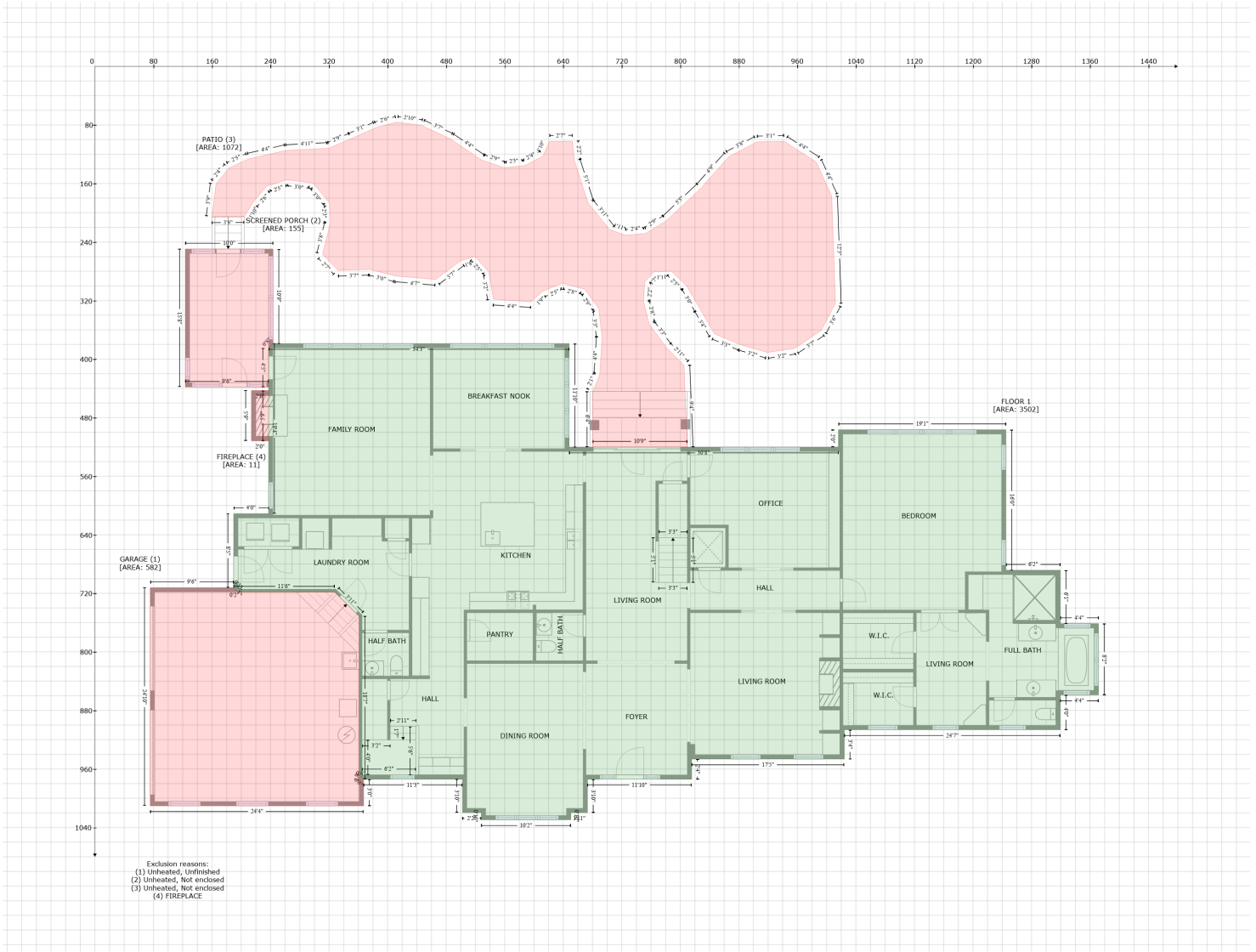


10542 Egret Court, Shingle Landing, Bishopville, Worcester County, Maryland, United States, 21813

Gross Living Area: 7237 sq. ft



Exclusion reasons:
 (1) Unheated, Unfinished
 (2) Unheated, Not enclosed
 (3) Unheated, Not enclosed
 (4) FIREPLACE

Space	Area (sq. ft)	Calculation
FLOOR 1 (Living area)	3502	Coordinate Polygon Area Algorithm using inches $-((648.1 + 648.1) * (378.8 - 520.3) + (648.1 + 1016.1) * (520.3 - 520.3) + (1016.1 + 1016.1) * (520.3 - 496.5) + (1016.1 + 1245) * (496.5 - 496.5) + (1245 + 1245) * (496.5 - 688.4) + (1245 + 1319.3) * (688.4 - 688.4) + (1319.3 + 1319.3) * (688.4 - 761.4) + (1319.3 + 1371.6) * (761.4 - 761.4) + (1371.6 + 1371.6) * (761.4 - 858.9) + (1371.6 + 1319.3) * (858.9 - 858.9) + (1319.3 + 1319.3) * (858.9 - 906.5) + (1319.3 + 1024.1) * (906.5 - 906.5) + (1024.1 + 1024.1) * (906.5 - 946.5) + (1024.1 + 815.6) * (946.5 - 946.5) + (815.6 + 815.6) * (946.5 - 974.1) + (815.6 + 673.2) * (974.1 - 974.1) + (673.2 + 673.2) * (974.1 - 1019.7) + (673.2 + 650.4) * (1019.7 - 1019.7) + (650.4 + 650.4) * (1019.7 - 1029.5) + (650.4 + 528.1) * (1029.5 - 1029.5) + (528.1 + 528.1) * (1029.5 - 1019.7) + (528.1 + 502.4) * (1019.7 - 1019.7) + (502.4 + 502.4) * (1019.7 - 974.1) + (502.4 + 367.2) * (974.1 - 974.1) + (367.2 + 367.2) * (974.1 - 973.9) + (367.2 + 361.2) * (973.9 - 968.1) + (361.2 + 361.2) * (968.1 - 751.3) + (361.2 + 327.7) * (751.3 - 718.4) + (327.7 + 195.7) * (718.4 - 718.4) + (195.7 + 189.7) * (718.4 - 712.4) + (189.7 + 189.7) * (712.4 - 611.2) + (189.7 + 237.4) * (611.2 - 611.2) + (237.4 + 237.4) * (611.2 - 384.8) + (237.4 + 243.4) * (384.8 - 378.8) + (243.4 + 648.1) * (378.8 - 378.8)) * 0.5 * 0.00694$
GARAGE	582	$-((189.7 + 195.7) * (712.4 - 718.4) + (195.7 + 327.7) * (718.4 - 718.4) + (327.7 + 361.2) * (718.4 -$

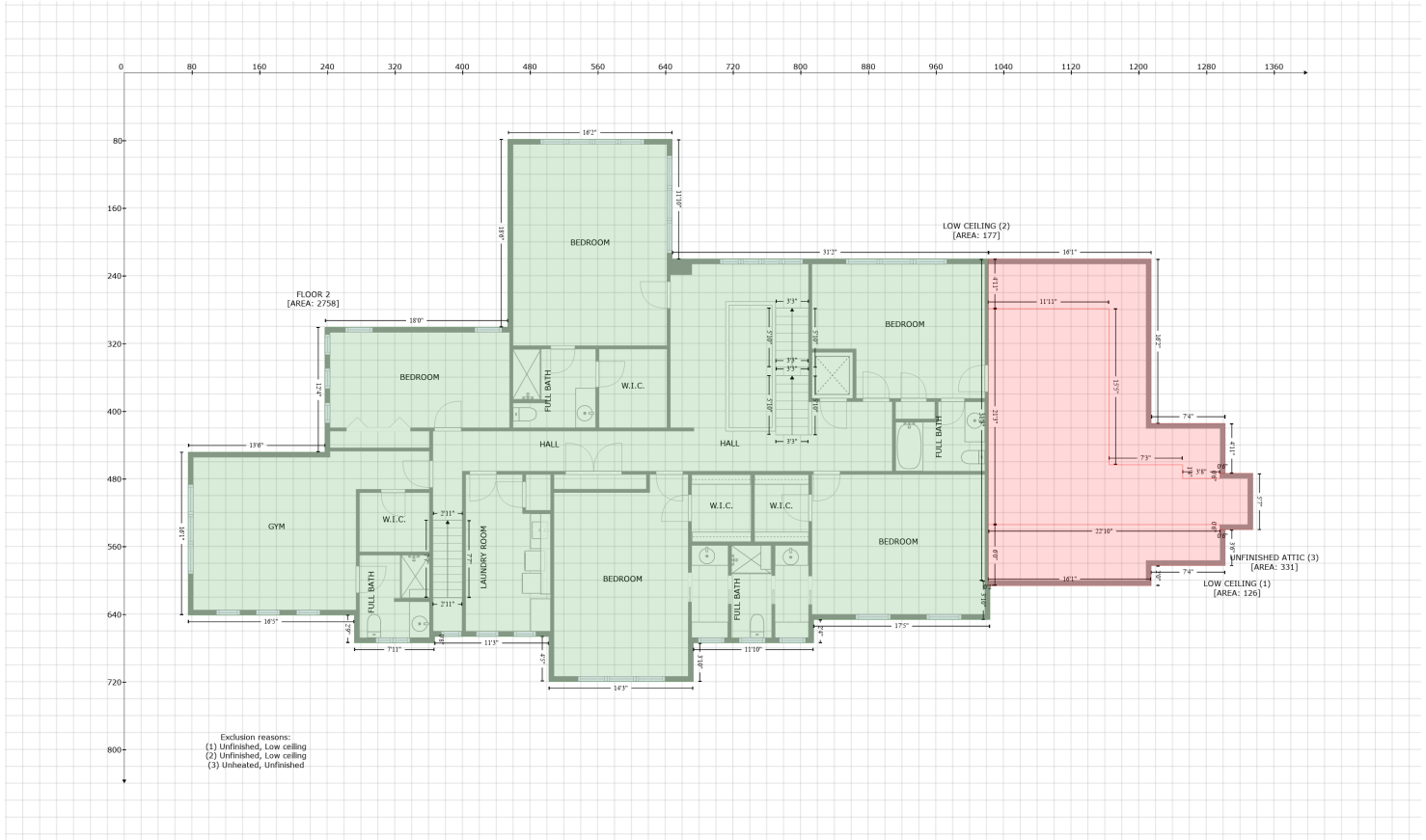
10542 Egret Court, Shingle Landing, Bishopville, Worcester County, Maryland, United States, 21813

Gross Living Area: 7237 sq. ft

Space	Area (sq. ft)	Calculation <small>Coordinate Polygon Area Algorithm using inches</small>
(Non-living area)		$751.3 + (361.2 + 361.2) * (751.3 - 968.1) + (361.2 + 367.2) * (968.1 - 974.1) + (367.2 + 367.2) * (974.1 - 1010.4) + (367.2 + 75.6) * (1010.4 - 1010.4) + (75.6 + 75.6) * (1010.4 - 712.4) + (75.6 + 189.7) * (712.4 - 712.4)) * 0.5 * 0.00694$
SCREENED PORCH (Non-living area)	155	$-(243.4 + 243.4) * (249.6 - 378.8) + (243.4 + 237.4) * (378.8 - 384.8) + (237.4 + 237.4) * (384.8 - 438.1) + (237.4 + 123.5) * (438.1 - 438.1) + (123.5 + 123.5) * (438.1 - 249.6) + (123.5 + 243.4) * (249.6 - 249.6)) * 0.5 * 0.00694$
PATIO (Non-living area)	1072	$-(412.6 + 446.6) * (76.3 - 80.7) + (446.6 + 485.3) * (80.7 - 98.7) + (485.3 + 528.5) * (98.7 - 127.9) + (528.5 + 559.7) * (127.9 - 138.5) + (559.7 + 586.9) * (138.5 - 135.7) + (586.9 + 612.1) * (135.7 - 122.8) + (612.1 + 621.2) * (122.8 - 102.4) + (621.2 + 652.5) * (102.4 - 102.1) + (652.5 + 655.2) * (102.1 - 128.3) + (655.2 + 673.9) * (128.3 - 186.4) + (673.9 + 703.5) * (186.4 - 223.1) + (703.5 + 725.6) * (223.1 - 230.9) + (725.6 + 753.1) * (230.9 - 228.2) + (753.1 + 780.9) * (228.2 - 210.8) + (780.9 + 828.2) * (210.8 - 166.3) + (828.2 + 866.2) * (166.3 - 123.5) + (866.2 + 905) * (123.5 - 103.1) + (905 + 941.7) * (103.1 - 102.4) + (941.7 + 985.5) * (102.4 - 130.3) + (985.5 + 1006.9) * (130.3 - 177.2) + (1006.9 + 1012) * (177.2 - 324) + (1012 + 992.3) * (324 - 361) + (992.3 + 956.6) * (361 - 385.2) + (956.6 + 919.2) * (385.2 - 390.9) + (919.2 + 882.5) * (390.9 - 380.4) + (882.5 + 846.9) * (380.4 - 365.5) + (846.9 + 826.8) * (365.5 - 331.1) + (826.8 + 808.8) * (331.1 - 300.2) + (808.8 + 787.7) * (300.2 - 279.8) + (787.7 + 764.3) * (279.8 - 280.5) + (764.3 + 751.4) * (280.5 - 294.8) + (751.4 + 749.7) * (294.8 - 320.9) + (749.7 + 757.5) * (320.9 - 352.2) + (757.5 + 780.6) * (352.2 - 383.5) + (780.6 + 805.1) * (383.5 - 408.3) + (805.1 + 809.6) * (408.3 - 520.3) + (809.6 + 680.5) * (520.3 - 520.3) + (680.5 + 680.5) * (520.3 - 444.3) + (680.5 + 689.9) * (444.3 - 421.2) + (689.9 + 693.2) * (421.2 - 369.5) + (693.2 + 688.5) * (369.5 - 331) + (688.5 + 669.5) * (331 - 304.4) + (669.5 + 638.6) * (304.4 - 296.4) + (638.6 + 612) * (296.4 - 307.3) + (612 + 596.4) * (307.3 - 321.5) + (596.4 + 544.6) * (321.5 - 318.2) + (544.6 + 538.4) * (318.2 - 281.2) + (538.4 + 519.4) * (281.2 - 259.8) + (519.4 + 500) * (259.8 - 265.5) + (500 + 465.8) * (265.5 - 291.1) + (465.8 + 410.7) * (291.1 - 286.4) + (410.7 + 375.6) * (286.4 - 277.4) + (375.6 + 332.4) * (277.4 - 278.8) + (332.4 + 311) * (278.8 - 256.9) + (311 + 321.9) * (256.9 - 214.2) + (321.9 + 320.8) * (214.2 - 187.2) + (320.8 + 297.9) * (187.2 - 159.3) + (297.9 + 261.9) * (159.3 - 155) + (261.9 + 234.7) * (155 - 163.9) + (234.7 + 215.5) * (163.9 - 186.5) + (215.5 + 204.2) * (186.5 - 205.3) + (204.2 + 160) * (205.3 - 205.6) + (160 + 165.5) * (205.6 - 160.5) + (165.5 + 183.2) * (160.5 - 138.8) + (183.2 + 209.7) * (138.8 - 126.6) + (209.7 + 260.7) * (126.6 - 115) + (260.7 + 319.1) * (115 - 112) + (319.1 + 349.7) * (112 - 99) + (349.7 + 383.7) * (99 - 83.8) + (383.7 + 412.6) * (83.8 - 76.3)) * 0.5 * 0.00694$
FIREPLACE (Non-living area)	11	$-(237.4 + 237.4) * (443 - 511.7) + (237.4 + 213.9) * (511.7 - 511.7) + (213.9 + 213.9) * (511.7 - 443) + (213.9 + 237.4) * (443 - 443)) * 0.5 * 0.00694$

10542 Egret Court, Shingle Landing, Bishopville, Worcester County, Maryland, United States, 21813

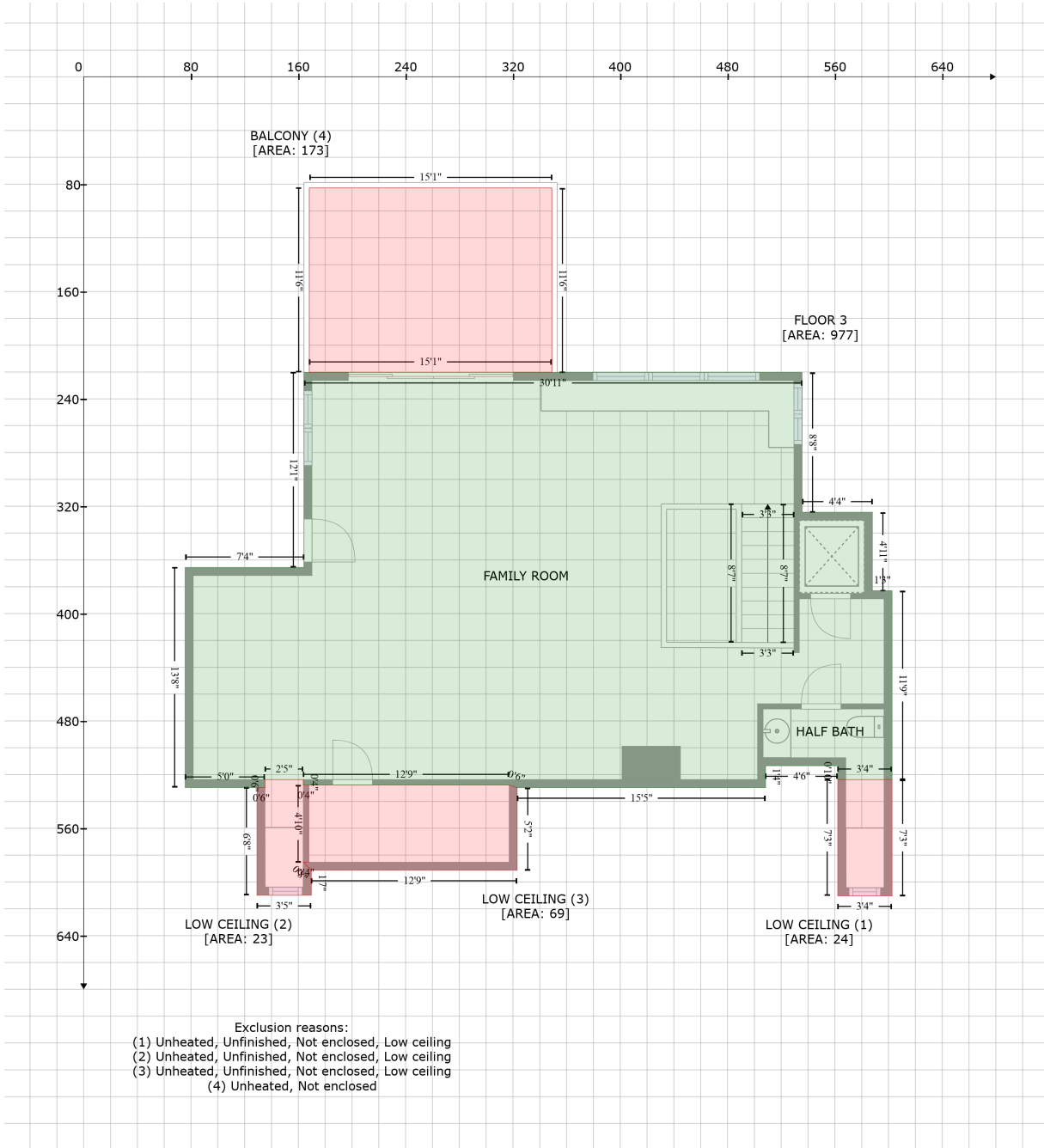
Gross Living Area: 7237 sq. ft



Space	Area (sq. ft)	Calculation
FLOOR 2 (Living area)	2758	$-(648.1 + 648.1) * (78.8 - 220.3) + (648.1 + 1022.1) * (220.3 - 220.3) + (1022.1 + 1022.1) * (220.3 - 606.5) + (1022.1 + 1024.1) * (606.5 - 606.5) + (1024.1 + 1024.1) * (606.5 - 646.5) + (1024.1 + 815.6) * (646.5 - 646.5) + (815.6 + 815.6) * (646.5 - 674.1) + (815.6 + 673.2) * (674.1 - 674.1) + (673.2 + 673.2) * (674.1 - 719.7) + (673.2 + 502.4) * (719.7 - 719.7) + (502.4 + 502.4) * (719.7 - 666.5) + (502.4 + 367.2) * (666.5 - 666.5) + (367.2 + 367.2) * (666.5 - 674.1) + (367.2 + 272.3) * (674.1 - 674.1) + (272.3 + 272.3) * (674.1 - 641.2) + (272.3 + 75.6) * (641.2 - 641.2) + (75.6 + 75.6) * (641.2 - 448.7) + (75.6 + 237.4) * (448.7 - 448.7) + (237.4 + 237.4) * (448.7 - 301) + (237.4 + 453.8) * (301 - 301) + (453.8 + 453.8) * (301 - 78.8) + (453.8 + 648.1) * (78.8 - 78.8) * 0.5 * 0.00694$
LOW CEILING (Non-living area)	126	$-(1296.4 + 1296.4) * (534.2 - 540.2) + (1296.4 + 1302.4) * (540.2 - 540.2) + (1302.4 + 1302.4) * (540.2 - 582.7) + (1302.4 + 1214.8) * (582.7 - 582.7) + (1214.8 + 1214.8) * (582.7 - 606.5) + (1214.8 + 1022.1) * (606.5 - 606.5) + (1022.1 + 1022.1) * (606.5 - 534.2) + (1022.1 + 1296.4) * (534.2 - 534.2) * 0.5 * 0.00694$
LOW CEILING (Non-living area)	177	$-(1214.8 + 1214.8) * (220.3 - 414.7) + (1214.8 + 1302.4) * (414.7 - 414.7) + (1302.4 + 1302.4) * (414.7 - 473.7) + (1302.4 + 1296.4) * (473.7 - 473.7) + (1296.4 + 1296.4) * (473.7 - 479.7) + (1296.4 + 1252.1) * (479.7 - 479.7) + (1252.1 + 1252.1) * (479.7 - 463.6) + (1252.1 + 1165) * (463.6 - 463.6) + (1165 + 1165) * (463.6 - 279) + (1165 + 1022.1) * (279 - 279) + (1022.1 + 1022.1) * (279 - 220.3) + (1022.1 + 1214.8) * (220.3 - 220.3) * 0.5 * 0.00694$
UNFINISHED ATTIC (Non-living area)	331	$-(1165 + 1165) * (279 - 463.6) + (1165 + 1252.1) * (463.6 - 463.6) + (1252.1 + 1252.1) * (463.6 - 479.7) + (1252.1 + 1296.4) * (479.7 - 479.7) + (1296.4 + 1296.4) * (479.7 - 473.7) + (1296.4 + 1335.1) * (473.7 - 473.7) + (1335.1 + 1335.1) * (473.7 - 540.2) + (1335.1 + 1296.4) * (540.2 - 540.2) + (1296.4 + 1296.4) * (540.2 - 534.2) + (1296.4 + 1022.1) * (534.2 - 534.2) + (1022.1 + 1022.1) * (534.2 - 279) + (1022.1 + 1165) * (279 - 279) * 0.5 * 0.00694$

10542 Egret Court, Shingle Landing, Bishopville, Worcester County, Maryland, United States, 21813

Gross Living Area: 7237 sq. ft



Space	Area (sq. ft)	Calculation
FLOOR 3 (Living area)	977	Coordinate Polygon Area Algorithm using inches $-((535.5 + 535.5) * (220.3 - 324.5) + (535.5 + 587.9) * (324.5 - 324.5) + (587.9 + 587.9) * (324.5 - 383) + (587.9 + 602.6) * (383 - 383) + (602.6 + 602.6) * (383 - 523.7) + (602.6 + 562.2) * (523.7 - 523.7) + (562.2 + 562.2) * (523.7 - 513.4) + (562.2 + 508.3) * (513.4 - 513.4) + (508.3 + 508.3) * (513.4 - 529.7) + (508.3 + 323.2) * (529.7 - 529.7) + (323.2 + 317.2) * (529.7 - 527.7) + (317.2 + 163.7) * (527.7 - 527.7) + (163.7 + 163.7) * (527.7 - 523.7) + (163.7 + 135.2) * (523.7 - 523.7) + (135.2 + 135.2) * (523.7 - 529.6) + (135.2 + 75.7) * (529.6 - 529.6) + (75.7 + 75.7) * (529.6 - 365.7) + (75.7 + 164.2) * (365.7 - 365.7) + (164.2 + 164.2) * (365.7 - 220.3) + (164.2 + 535.5) *$

10542 Egret Court, Shingle Landing, Bishopville, Worcester County, Maryland, United States, 21813

Gross Living Area: 7237 sq. ft

Space	Area (sq. ft)	Calculation <small>Coordinate Polygon Area Algorithm using inches</small>
		$(220.3 - 220.3) * 0.5 * 0.00694$
LOW CEILING (Non-living area)	24	$-((602.6 + 602.6) * (523.7 - 610.4) + (602.6 + 562.2) * (610.4 - 610.4) + (562.2 + 562.2) * (610.4 - 523.7) + (562.2 + 602.6) * (523.7 - 523.7)) * 0.5 * 0.00694$
LOW CEILING (Non-living area)	23	$-((163.7 + 163.7) * (523.7 - 527.7) + (163.7 + 167.7) * (527.7 - 527.7) + (167.7 + 167.7) * (527.7 - 585.3) + (167.7 + 163.7) * (585.3 - 585.3) + (163.7 + 169.7) * (585.3 - 591.3) + (169.7 + 169.7) * (591.3 - 610) + (169.7 + 129.2) * (610 - 610) + (129.2 + 129.2) * (610 - 529.6) + (129.2 + 135.2) * (529.6 - 529.6) + (135.2 + 135.2) * (529.6 - 523.7) + (135.2 + 163.7) * (523.7 - 523.7)) * 0.5 * 0.00694$
LOW CEILING (Non-living area)	69	$-((317.2 + 323.2) * (527.7 - 529.7) + (323.2 + 323.2) * (529.7 - 591.3) + (323.2 + 169.7) * (591.3 - 591.3) + (169.7 + 163.7) * (591.3 - 585.3) + (163.7 + 167.7) * (585.3 - 585.3) + (167.7 + 167.7) * (585.3 - 527.7) + (167.7 + 317.2) * (527.7 - 527.7)) * 0.5 * 0.00694$
BALCONY (Non-living area)	173	$-((349 + 349) * (82.8 - 220.3) + (349 + 168.2) * (220.3 - 220.3) + (168.2 + 168.2) * (220.3 - 82.8) + (168.2 + 349) * (82.8 - 82.8)) * 0.5 * 0.00694$