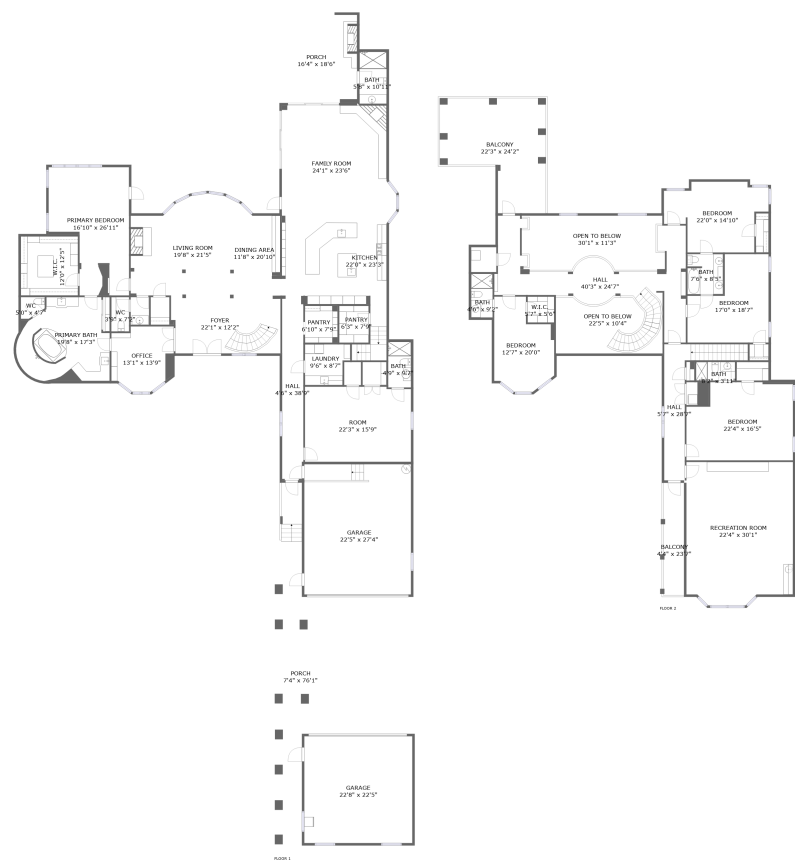


Home report

10930 Spring Street, Coquina Cove, Largo, Pinellas County, Florida, United States, 33774

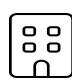



Total Area: 6319 sq. ft


Floor 1: 3758 sq. ft, Floor 2: 2561 sq. ft


Excluded: Garage 1122 sq. ft, Undefined 192 sq. ft, Outdoor Porch 708 sq. ft, Fireplace 15 sq. ft, Outdoor Balcony 517 sq. ft, Opentobelow 560 sq. ft, Walls: 433 sq. ft

Property summary

**2**
Floors

**5**
Bedrooms

**6**
Bathrooms

**2**
Garages

Home report

10930 Spring Street, Coquina Cove, Largo, Pinellas County,
Florida, United States, 33774



Room dimensions

Floor 1 Total:3758sqft Excluded: 1945sqft

#		Max Dimensions	sqft	Included
1	Garage	22'5" x 27'4"	613 sq. ft	No
2	Porch	7'4" x 76'1"	417 sq. ft	No
3	Laundry	9'6" x 8'7"	73 sq. ft	Yes
4	Living Room	19'8" x 21'5"	375 sq. ft	Yes
5	Primary Bedroom	16'10" x 26'11"	368 sq. ft	Yes
6	Primary Bath	19'8" x 17'3"	294 sq. ft	Yes
7	Pantry	6'3" x 7'9"	48 sq. ft	Yes
8	WC	3'9" x 7'2"	27 sq. ft	Yes
9	Bath	4'9" x 9'7"	46 sq. ft	Yes
10	Pantry	6'10" x 7'9"	53 sq. ft	Yes
11	Family Room	24'1" x 23'6"	522 sq. ft	Yes

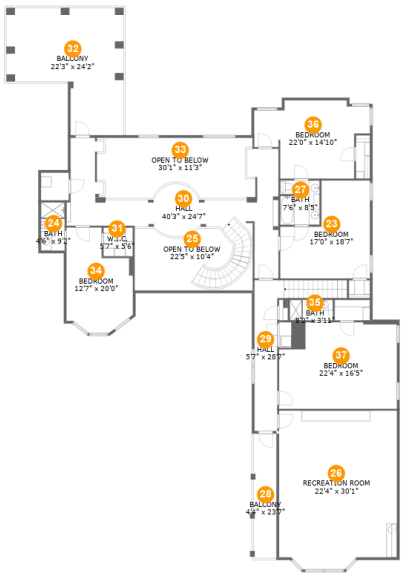
Home report

**10930 Spring Street, Coquina Cove, Largo, Pinellas County,
Florida, United States, 33774**

#		Max Dimensions	sqft	Included
12	Room	22'3" x 15'9"	349 sq. ft	Yes
13	Foyer	22'1" x 12'2"	271 sq. ft	Yes
14	Porch	16'4" x 18'6"	302 sq. ft	No
15	Kitchen	22'0" x 23'3"	454 sq. ft	Yes
16	Office	13'1" x 13'9"	158 sq. ft	Yes
17	WC	5'0" x 4'7"	19 sq. ft	Yes
18	Dining Area	11'8" x 20'10"	209 sq. ft	Yes
19	Bath	5'8" x 10'11"	62 sq. ft	Yes
20	Hall	4'6" x 38'9"	171 sq. ft	Yes
21	W.I.C.	12'0" x 12'5"	149 sq. ft	Yes
22	Garage	22'8" x 22'5"	509 sq. ft	No

Home report

10930 Spring Street, Coquina Cove, Largo, Pinellas County,
Florida, United States, 33774



Room dimensions

Floor 2 Total:2561sqft Excluded: 1169sqft

#		Max Dimensions	sqft	Included
23	Bedroom	17'0" x 18'7"	248 sq. ft	Yes
24	Bath	4'6" x 9'2"	41 sq. ft	Yes
25	Open To Below	22'5" x 10'4"	259 sq. ft	No
26	Recreation Room	22'4" x 30'1"	646 sq. ft	Yes
27	Bath	7'6" x 8'5"	62 sq. ft	Yes
28	Balcony	4'4" x 23'7"	102 sq. ft	No
29	Hall	5'7" x 28'7"	169 sq. ft	Yes
30	Hall	40'3" x 24'7"	410 sq. ft	Yes
31	W.I.C.	5'7" x 5'6"	31 sq. ft	Yes
32	Balcony	22'3" x 24'2"	415 sq. ft	No
33	Open To Below	30'1" x 11'3"	302 sq. ft	No

Home report

**10930 Spring Street, Coquina Cove, Largo, Pinellas County,
Florida, United States, 33774**

#		Max Dimensions	sqft	Included
34	Bedroom	12'7" x 20'0"	204 sq. ft	Yes
35	Bath	8'2" x 3'11"	32 sq. ft	Yes
36	Bedroom	22'0" x 14'10"	255 sq. ft	Yes
37	Bedroom	22'4" x 16'5"	342 sq. ft	Yes

10930 Spring Street, Coquina Cove, Largo, Pinellas County,
Florida, United States, 33774

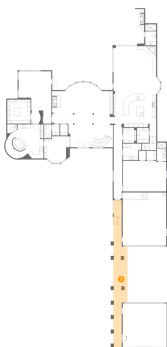
1 Floor 1 - Garage



Max Dimensions: 22'5" x
27'4"
Calculated Area: 613 sq. ft
Included: No

Heated: No
Finished: No
Enclosed: Yes
Contiguous:
Yes
Permitted: Yes
Wet space: No
Addition: No
Conversion: No

2 Floor 1 - Porch



Max Dimensions: 7'4" x
76'1"
Calculated Area: 417 sq. ft
Included: No

Heated: No
Finished: Yes
Enclosed: No
Contiguous:
Yes
Permitted: Yes
Wet space: No
Addition: No
Conversion: No

10930 Spring Street, Coquina Cove, Largo, Pinellas County,
Florida, United States, 33774

3 Floor 1 - Laundry



Max Dimensions: 9'6" x 8'7"
Calculated Area: 73 sq. ft
Included: Yes

Heated: Yes
Finished: Yes
Enclosed: Yes
Contiguous: Yes
Permitted: Yes
Wet space: No
Addition: No
Conversion: No

4 Floor 1 - Living Room



Max Dimensions: 19'8" x 21'5"
Calculated Area: 375 sq. ft
Included: Yes

Heated: Yes
Finished: Yes
Enclosed: Yes
Contiguous: Yes
Permitted: Yes
Wet space: No
Addition: No
Conversion: No

5 Floor 1 - Primary Bedroom

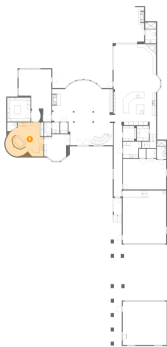


Max Dimensions: 16'10" x 26'11"
Calculated Area: 368 sq. ft
Included: Yes

Heated: Yes
Finished: Yes
Enclosed: Yes
Contiguous: Yes
Permitted: Yes
Wet space: No
Addition: No
Conversion: No

10930 Spring Street, Coquina Cove, Largo, Pinellas County,
Florida, United States, 33774

6 Floor 1 - Primary Bath



Max Dimensions: 19'8" x 17'3"
Calculated Area: 294 sq. ft
Included: Yes

Heated: Yes
Finished: Yes
Enclosed: Yes
Contiguous: Yes
Permitted: Yes
Wet space: Yes
Addition: No
Conversion: No

7 Floor 1 - Pantry



Max Dimensions: 6'3" x 7'9"
Calculated Area: 48 sq. ft
Included: Yes

Heated: Yes
Finished: Yes
Enclosed: Yes
Contiguous: Yes
Permitted: Yes
Wet space: No
Addition: No
Conversion: No

8 Floor 1 - WC



Max Dimensions: 3'9" x 7'2"
Calculated Area: 27 sq. ft
Included: No

Heated: Yes
Finished: Yes
Enclosed: Yes
Contiguous: No
Permitted: Yes
Wet space: No
Addition: No
Conversion: No

10930 Spring Street, Coquina Cove, Largo, Pinellas County,
Florida, United States, 33774

9 Floor 1 - Bath



Max Dimensions: 4'9" x 9'7"
Calculated Area: 46 sq. ft
Included: Yes

Heated: Yes
Finished: Yes
Enclosed: Yes
Contiguous: Yes
Permitted: Yes
Wet space: Yes
Addition: No
Conversion: No

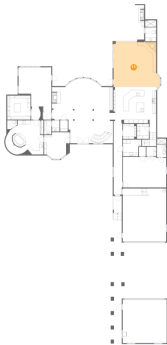
10 Floor 1 - Pantry



Max Dimensions: 6'10" x 7'9"
Calculated Area: 53 sq. ft
Included: Yes

Heated: Yes
Finished: Yes
Enclosed: Yes
Contiguous: Yes
Permitted: Yes
Wet space: No
Addition: No
Conversion: No

11 Floor 1 - Family Room

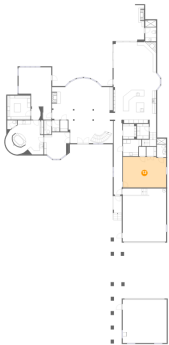


Max Dimensions: 24'1" x 23'6"
Calculated Area: 522 sq. ft
Included: Yes

Heated: Yes
Finished: Yes
Enclosed: Yes
Contiguous: Yes
Permitted: Yes
Wet space: No
Addition: No
Conversion: No

10930 Spring Street, Coquina Cove, Largo, Pinellas County,
Florida, United States, 33774

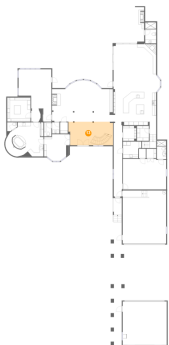
12 Floor 1 - Room



Max Dimensions: 22'3" x 15'9"
Calculated Area: 349 sq. ft
Included: Yes

Heated: Yes
Finished: Yes
Enclosed: Yes
Contiguous: Yes
Permitted: Yes
Wet space: No
Addition: No
Conversion: No

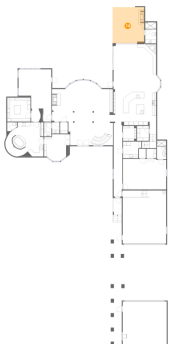
13 Floor 1 - Foyer



Max Dimensions: 22'1" x 12'2"
Calculated Area: 271 sq. ft
Included: Yes

Heated: Yes
Finished: Yes
Enclosed: Yes
Contiguous: Yes
Permitted: Yes
Wet space: No
Addition: No
Conversion: No

14 Floor 1 - Porch



Max Dimensions: 16'4" x 18'6"
Calculated Area: 302 sq. ft
Included: No

Heated: No
Finished: Yes
Enclosed: No
Contiguous: Yes
Permitted: Yes
Wet space: No
Addition: No
Conversion: No

10930 Spring Street, Coquina Cove, Largo, Pinellas County,
Florida, United States, 33774

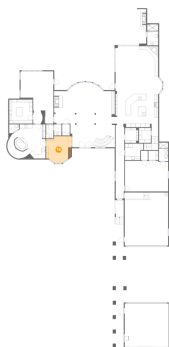
15 Floor 1 - Kitchen



Max Dimensions: 22'0" x 23'3"
Calculated Area: 454 sq. ft
Included: Yes

Heated: Yes
Finished: Yes
Enclosed: Yes
Contiguous: Yes
Permitted: Yes
Wet space: No
Addition: No
Conversion: No

16 Floor 1 - Office



Max Dimensions: 13'1" x 13'9"
Calculated Area: 158 sq. ft
Included: Yes

Heated: Yes
Finished: Yes
Enclosed: Yes
Contiguous: Yes
Permitted: Yes
Wet space: No
Addition: No
Conversion: No

17 Floor 1 - WC



Max Dimensions: 5'0" x 4'7"
Calculated Area: 19 sq. ft
Included: Yes

Heated: Yes
Finished: Yes
Enclosed: Yes
Contiguous: Yes
Permitted: Yes
Wet space: No
Addition: No
Conversion: No

10930 Spring Street, Coquina Cove, Largo, Pinellas County,
Florida, United States, 33774

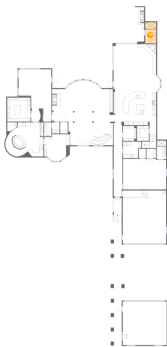
18 Floor 1 - Dining Area



Max Dimensions: 11'8" x 20'10"
Calculated Area: 209 sq. ft
Included: Yes

Heated: Yes
Finished: Yes
Enclosed: Yes
Contiguous: Yes
Permitted: Yes
Wet space: No
Addition: No
Conversion: No

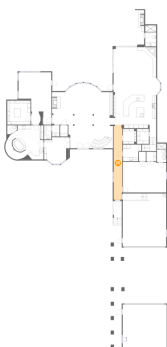
19 Floor 1 - Bath



Max Dimensions: 5'8" x 10'11"
Calculated Area: 62 sq. ft
Included: Yes

Heated: Yes
Finished: Yes
Enclosed: Yes
Contiguous: Yes
Permitted: Yes
Wet space: Yes
Addition: No
Conversion: No

20 Floor 1 - Hall

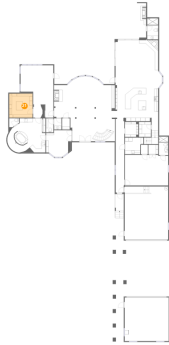


Max Dimensions: 4'6" x 38'9"
Calculated Area: 171 sq. ft
Included: Yes

Heated: Yes
Finished: Yes
Enclosed: Yes
Contiguous: Yes
Permitted: Yes
Wet space: No
Addition: No
Conversion: No

10930 Spring Street, Coquina Cove, Largo, Pinellas County,
Florida, United States, 33774

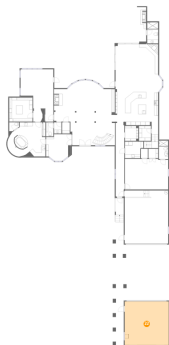
21 Floor 1 - W.I.C.



Max Dimensions: 12'0" x 12'5"
Calculated Area: 149 sq. ft
Included: Yes

Heated: Yes
Finished: Yes
Enclosed: Yes
Contiguous: Yes
Permitted: Yes
Wet space: No
Addition: No
Conversion: No

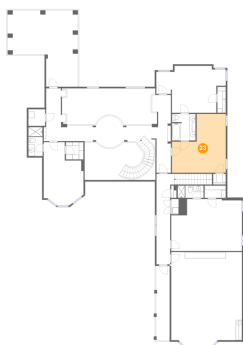
22 Floor 1 - Garage



Max Dimensions: 22'8" x 22'5"
Calculated Area: 509 sq. ft
Included: No

Heated: No
Finished: No
Enclosed: Yes
Contiguous: Yes
Permitted: Yes
Wet space: No
Addition: No
Conversion: No

23 Floor 2 - Bedroom

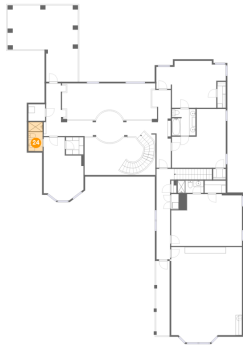


Max Dimensions: 17'0" x 18'7"
Calculated Area: 248 sq. ft
Included: Yes

Heated: Yes
Finished: Yes
Enclosed: Yes
Contiguous: Yes
Permitted: Yes
Wet space: No
Addition: No
Conversion: No

10930 Spring Street, Coquina Cove, Largo, Pinellas County,
Florida, United States, 33774

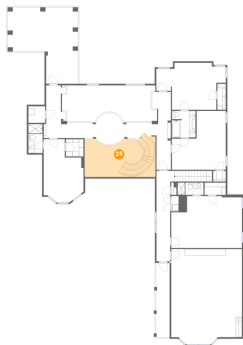
24 Floor 2 - Bath



Max Dimensions: 4'6" x 9'2"
Calculated Area: 41 sq. ft
Included: Yes

Heated: Yes
Finished: Yes
Enclosed: Yes
Contiguous: Yes
Permitted: Yes
Wet space: Yes
Addition: No
Conversion: No

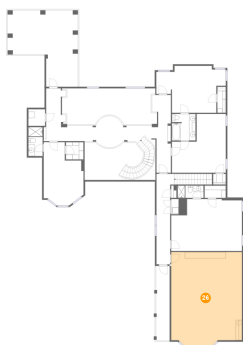
25 Floor 2 - Open To Below



Max Dimensions: 22'5" x
10'4"
Calculated Area: 259 sq. ft
Included: No

Heated: No
Finished: No
Enclosed: No
Contiguous:
Yes
Permitted: No
Wet space: No
Addition: No
Conversion: No

26 Floor 2 - Recreation Room

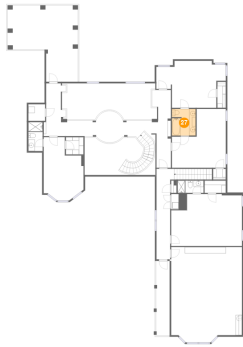


Max Dimensions: 22'4" x
30'1"
Calculated Area: 646 sq. ft
Included: Yes

Heated: Yes
Finished: Yes
Enclosed: Yes
Contiguous:
Yes
Permitted: Yes
Wet space: No
Addition: No
Conversion: No

10930 Spring Street, Coquina Cove, Largo, Pinellas County,
Florida, United States, 33774

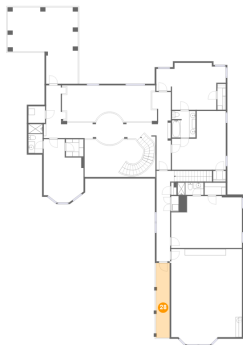
27 Floor 2 - Bath



Max Dimensions: 7'6" x 8'5"
Calculated Area: 62 sq. ft
Included: Yes

Heated: Yes
Finished: Yes
Enclosed: Yes
Contiguous: Yes
Permitted: Yes
Wet space: Yes
Addition: No
Conversion: No

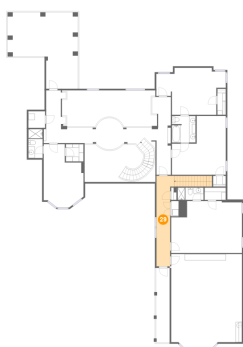
28 Floor 2 - Balcony



Max Dimensions: 4'4" x
23'7"
Calculated Area: 102 sq. ft
Included: No

Heated: No
Finished: Yes
Enclosed: No
Contiguous:
Yes
Permitted: Yes
Wet space: No
Addition: No
Conversion: No

29 Floor 2 - Hall

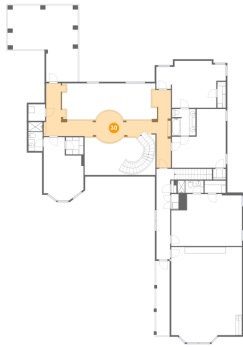


Max Dimensions: 5'7" x
28'7"
Calculated Area: 169 sq. ft
Included: Yes

Heated: Yes
Finished: Yes
Enclosed: Yes
Contiguous:
Yes
Permitted: Yes
Wet space: No
Addition: No
Conversion: No

10930 Spring Street, Coquina Cove, Largo, Pinellas County,
Florida, United States, 33774

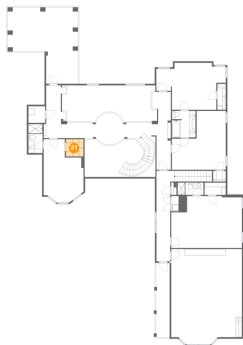
30 Floor 2 - Hall



Max Dimensions: 40'3" x 24'7"
Calculated Area: 410 sq. ft
Included: Yes

Heated: Yes
Finished: Yes
Enclosed: Yes
Contiguous: Yes
Permitted: Yes
Wet space: No
Addition: No
Conversion: No

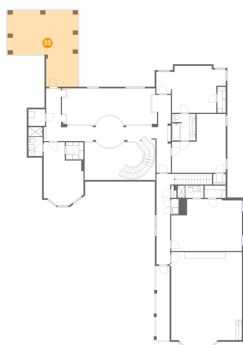
31 Floor 2 - W.I.C.



Max Dimensions: 5'7" x 5'6"
Calculated Area: 31 sq. ft
Included: Yes

Heated: Yes
Finished: Yes
Enclosed: Yes
Contiguous: Yes
Permitted: Yes
Wet space: No
Addition: No
Conversion: No

32 Floor 2 - Balcony

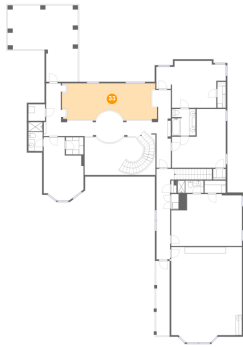


Max Dimensions: 22'3" x 24'2"
Calculated Area: 415 sq. ft
Included: No

Heated: No
Finished: Yes
Enclosed: No
Contiguous: Yes
Permitted: Yes
Wet space: No
Addition: No
Conversion: No

10930 Spring Street, Coquina Cove, Largo, Pinellas County,
Florida, United States, 33774

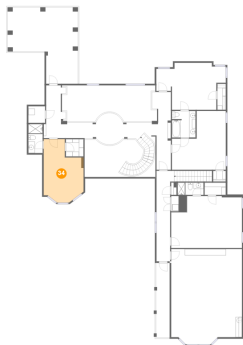
33 Floor 2 - Open To Below



Max Dimensions: 30'1" x 11'3"
Calculated Area: 302 sq. ft
Included: No

Heated: No
Finished: No
Enclosed: No
Contiguous: Yes
Permitted: No
Wet space: No
Addition: No
Conversion: No

34 Floor 2 - Bedroom



Max Dimensions: 12'7" x 20'0"
Calculated Area: 204 sq. ft
Included: Yes

Heated: Yes
Finished: Yes
Enclosed: Yes
Contiguous: Yes
Permitted: Yes
Wet space: No
Addition: No
Conversion: No

35 Floor 2 - Bath

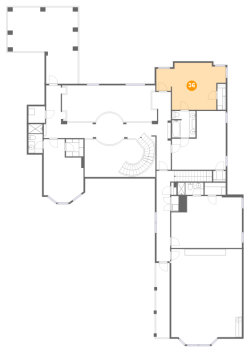


Max Dimensions: 8'2" x 3'11"
Calculated Area: 32 sq. ft
Included: Yes

Heated: Yes
Finished: Yes
Enclosed: Yes
Contiguous: Yes
Permitted: Yes
Wet space: Yes
Addition: No
Conversion: No

10930 Spring Street, Coquina Cove, Largo, Pinellas County,
Florida, United States, 33774

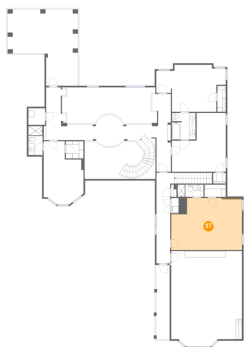
36 Floor 2 - Bedroom



Max Dimensions: 22'0" x 14'10"
Calculated Area: 255 sq. ft
Included: Yes

Heated: Yes
Finished: Yes
Enclosed: Yes
Contiguous: Yes
Permitted: Yes
Wet space: No
Addition: No
Conversion: No

37 Floor 2 - Bedroom



Max Dimensions: 22'4" x 16'5"
Calculated Area: 342 sq. ft
Included: Yes

Heated: Yes
Finished: Yes
Enclosed: Yes
Contiguous: Yes
Permitted: Yes
Wet space: No
Addition: No
Conversion: No