


35505 Upper Loop Road, Pacific City, Tillamook County, Oregon, United States, 97135



Property summary


 **1** Garages

 **4** Bedrooms

 **3** Bathrooms

 **0** Half baths

 **2** Floors

 **2,460** Gross living area sqft

 **3,593** Total sqft

35505 Upper Loop Road, Pacific City, Tillamook County, Oregon, United States, 97135



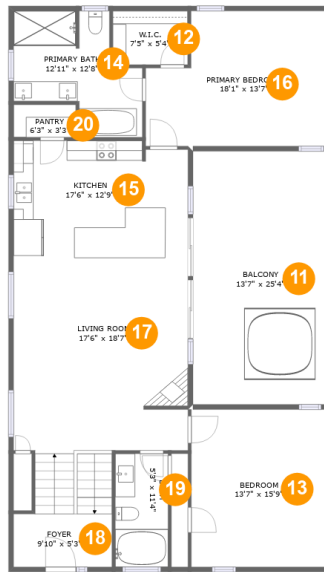
Room dimensions

Floor 1

Total sqft: 1766 Living area: 977

#		Dimensions	sqft	Counted as living area
1	Hall	3'5" x 10'1"	50 sq. ft	Yes
2	Bath	10'0" x 5'4"	53 sq. ft	Yes
3	Bedroom	13'7" x 13'7"	184 sq. ft	Yes
4	Bedroom	12'6" x 11'9"	146 sq. ft	Yes
5	Hall	7'1" x 9'2"	50 sq. ft	Yes
6	Electrical Room	6'1" x 4'9"	26 sq. ft	No
7	Recreation Room	17'6" x 16'11"	291 sq. ft	Yes
8	Laundry	6'0" x 9'9"	59 sq. ft	Yes
9	Patio	13'10" x 20'0"	278 sq. ft	No
10	Garage	21'2" x 21'2"	447 sq. ft	No

35505 Upper Loop Road, Pacific City, Tillamook County, Oregon, United States, 97135



Room dimensions

Floor 2

Total sqft: 1827 Living area: 1483

#		Dimensions	sqft	Counted as living area
11	Balcony	13'7" x 25'4"	344 sq. ft	No
12	W.I.C.	7'5" x 5'4"	40 sq. ft	Yes
13	Bedroom	13'7" x 15'9"	214 sq. ft	Yes
14	Primary Bath	12'11" x 12'8"	119 sq. ft	Yes
15	Kitchen	17'6" x 12'9"	219 sq. ft	Yes
16	Primary Bedroom	18'1" x 13'7"	220 sq. ft	Yes
17	Living Room	17'6" x 18'7"	367 sq. ft	Yes
18	Foyer	9'10" x 5'3"	53 sq. ft	Yes
19	Bath	5'3" x 11'4"	60 sq. ft	Yes
20	Pantry	6'3" x 3'3"	21 sq. ft	Yes

35505 Upper Loop Road, Pacific City, Tillamook County, Oregon, United States, 97135

1 Floor 1 - Hall



Dimensions: 3'5" x 10'1"
Area: 50 sq. ft
Counted as living area: Yes

Heated: Yes
Finished: Yes
Enclosed: Yes
Contiguous: Yes
Permitted: Yes
Wet space: No
Addition: No
Conversion: No

2 Floor 1 - Bath



Dimensions: 10'0" x 5'4"
Area: 53 sq. ft
Counted as living area: Yes

Heated: Yes
Finished: Yes
Enclosed: Yes
Contiguous: Yes
Permitted: Yes
Wet space: Yes
Addition: No
Conversion: No

35505 Upper Loop Road, Pacific City, Tillamook County, Oregon, United States, 97135

3 Floor 1 - Bedroom



Dimensions: 13'7" x 13'7"
Area: 184 sq. ft
Counted as living area: Yes

Heated: Yes
Finished: Yes
Enclosed: Yes
Contiguous: Yes
Permitted: Yes
Wet space: No
Addition: No
Conversion: No

4 Floor 1 - Bedroom



Dimensions: 12'6" x 11'9"
Area: 146 sq. ft
Counted as living area: Yes

Heated: Yes
Finished: Yes
Enclosed: Yes
Contiguous: Yes
Permitted: Yes
Wet space: No
Addition: No
Conversion: No

5 Floor 1 - Hall



Dimensions: 7'1" x 9'2"
Area: 50 sq. ft
Counted as living area: Yes

Heated: Yes
Finished: Yes
Enclosed: Yes
Contiguous: Yes
Permitted: Yes
Wet space: No
Addition: No
Conversion: No

35505 Upper Loop Road, Pacific City, Tillamook County, Oregon, United States, 97135

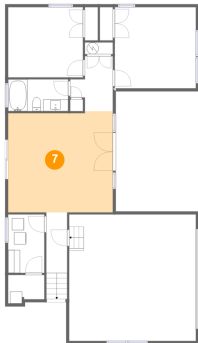
6 Floor 1 - Electrical Room



Dimensions: 6'1" x 4'9"
Area: 26 sq. ft
Counted as living area: No

Heated: No
Finished: No
Enclosed: Yes
Contiguous: Yes
Permitted: Yes
Wet space: No
Addition: No
Conversion: No

7 Floor 1 - Recreation Room



Dimensions: 17'6" x 16'11"
Area: 291 sq. ft
Counted as living area: Yes

Heated: Yes
Finished: Yes
Enclosed: Yes
Contiguous: Yes
Permitted: Yes
Wet space: No
Addition: No
Conversion: No

8 Floor 1 - Laundry



Dimensions: 6'0" x 9'9"
Area: 59 sq. ft
Counted as living area: Yes

Heated: Yes
Finished: Yes
Enclosed: Yes
Contiguous: Yes
Permitted: Yes
Wet space: No
Addition: No
Conversion: No

35505 Upper Loop Road, Pacific City, Tillamook County, Oregon, United States, 97135

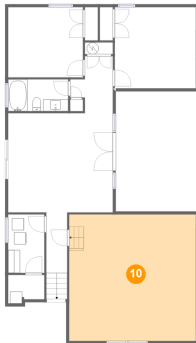
9 Floor 1 - Patio



Dimensions: 13'10" x 20'0"
Area: 278 sq. ft
Counted as living area: No

Heated: No
Finished: Yes
Enclosed: No
Contiguous: Yes
Permitted: Yes
Wet space: No
Addition: No
Conversion: No

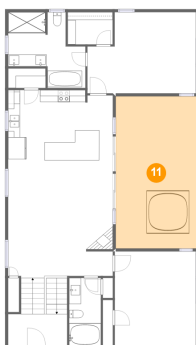
10 Floor 1 - Garage



Dimensions: 21'2" x 21'2"
Area: 447 sq. ft
Counted as living area: No

Heated: No
Finished: No
Enclosed: Yes
Contiguous: Yes
Permitted: Yes
Wet space: No
Addition: No
Conversion: No

11 Floor 2 - Balcony

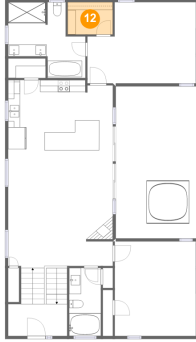


Dimensions: 13'7" x 25'4"
Area: 344 sq. ft
Counted as living area: No

Heated: No
Finished: Yes
Enclosed: No
Contiguous: Yes
Permitted: Yes
Wet space: No
Addition: No
Conversion: No

35505 Upper Loop Road, Pacific City, Tillamook County, Oregon, United States, 97135

12 Floor 2 - W.I.C.



Dimensions: 7'5" x 5'4"
Area: 40 sq. ft
Counted as living area: Yes

Heated: Yes
Finished: Yes
Enclosed: Yes
Contiguous: Yes
Permitted: Yes
Wet space: No
Addition: No
Conversion: No

13 Floor 2 - Bedroom



Dimensions: 13'7" x 15'9"
Area: 214 sq. ft
Counted as living area: Yes

Heated: Yes
Finished: Yes
Enclosed: Yes
Contiguous: Yes
Permitted: Yes
Wet space: No
Addition: No
Conversion: No

14 Floor 2 - Primary Bath

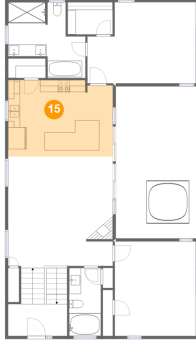


Dimensions: 12'11" x 12'8"
Area: 119 sq. ft
Counted as living area: Yes

Heated: Yes
Finished: Yes
Enclosed: Yes
Contiguous: Yes
Permitted: Yes
Wet space: Yes
Addition: No
Conversion: No

**35505 Upper Loop Road, Pacific City, Tillamook
County, Oregon, United States, 97135**

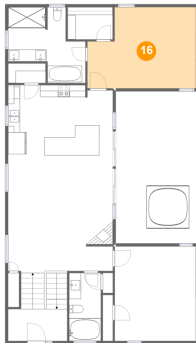
15 Floor 2 - Kitchen



Dimensions: 17'6" x 12'9"
Area: 219 sq. ft
Counted as living area: Yes

Heated: Yes
Finished: Yes
Enclosed: Yes
Contiguous: Yes
Permitted: Yes
Wet space: No
Addition: No
Conversion: No

16 Floor 2 - Primary Bedroom



Dimensions: 18'1" x 13'7"
Area: 220 sq. ft
Counted as living area: Yes

Heated: Yes
Finished: Yes
Enclosed: Yes
Contiguous: Yes
Permitted: Yes
Wet space: No
Addition: No
Conversion: No

17 Floor 2 - Living Room

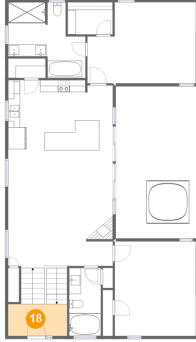


Dimensions: 17'6" x 18'7"
Area: 367 sq. ft
Counted as living area: Yes

Heated: Yes
Finished: Yes
Enclosed: Yes
Contiguous: Yes
Permitted: Yes
Wet space: No
Addition: No
Conversion: No

35505 Upper Loop Road, Pacific City, Tillamook County, Oregon, United States, 97135

18 Floor 2 - Foyer



Dimensions: 9'10" x 5'3"
Area: 53 sq. ft
Counted as living area: Yes

Heated: Yes
Finished: Yes
Enclosed: Yes
Contiguous: Yes
Permitted: Yes
Wet space: No
Addition: No
Conversion: No

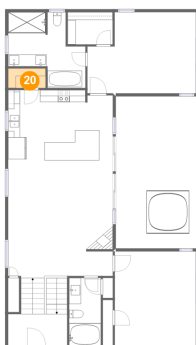
19 Floor 2 - Bath



Dimensions: 5'3" x 11'4"
Area: 60 sq. ft
Counted as living area: Yes

Heated: Yes
Finished: Yes
Enclosed: Yes
Contiguous: Yes
Permitted: Yes
Wet space: Yes
Addition: No
Conversion: No

20 Floor 2 - Pantry



Dimensions: 6'3" x 3'3"
Area: 21 sq. ft
Counted as living area: Yes

Heated: Yes
Finished: Yes
Enclosed: Yes
Contiguous: Yes
Permitted: Yes
Wet space: No
Addition: No
Conversion: No