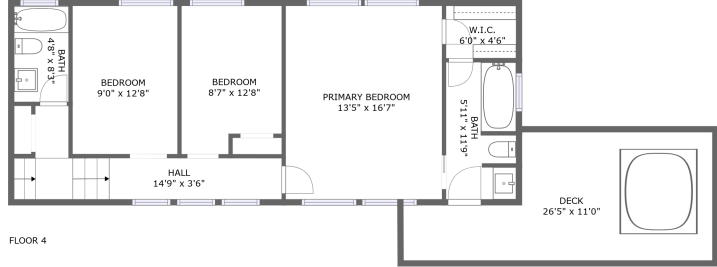


Home Data Report

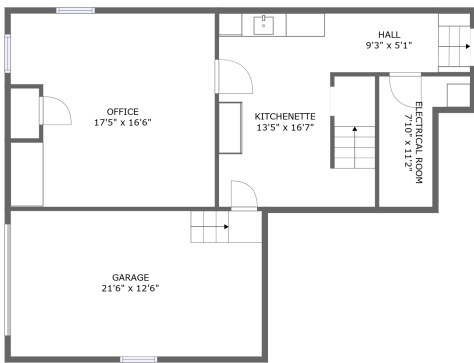
3212 Beechwood Boulevard, Squirrel Hill South, Pittsburgh, Allegheny County, Pennsylvania,



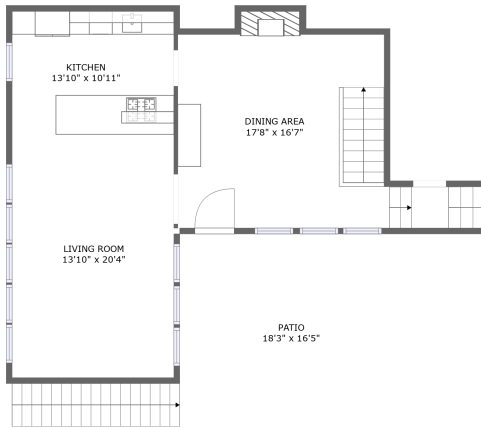
FLOOR 2



FLOOR 4

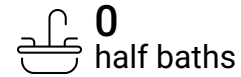


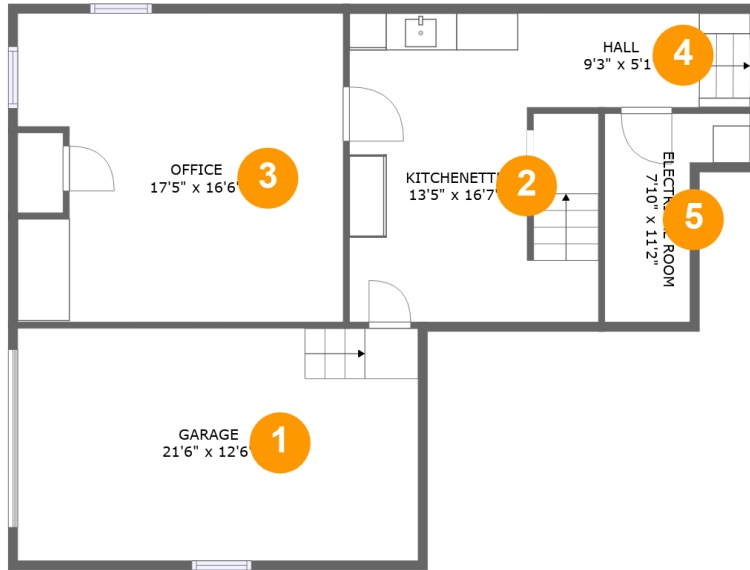
FLOOR 1



FLOOR 3

Property Summary





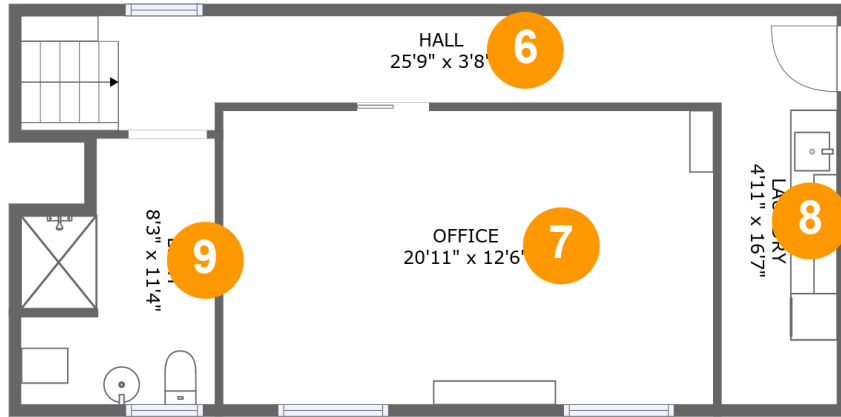
Room Dimensions

Floor 1

Total sqft: 969

Living area: 311

#	Room name	Dimensions	Area (sqft)	Counted as Living Area
1	Garage	21'6" x 12'6"	268 sq. ft	No
2	Kitchenette	13'5" x 16'7"	198 sq. ft	Yes
3	Office	17'5" x 16'6"	276 sq. ft	No
4	Hall	9'3" x 5'1"	60 sq. ft	Yes
5	Electrical Room	7'10" x 11'2"	60 sq. ft	No



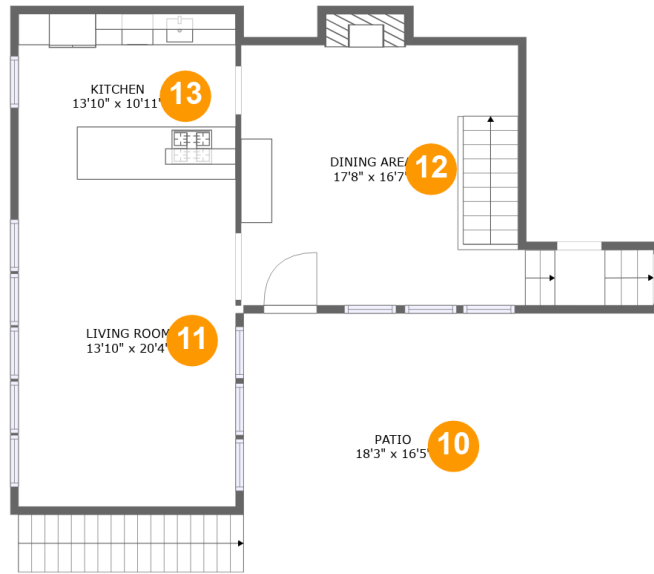
Room Dimensions

Floor 2

Total sqft: 621

Living area: 430

#	Room name	Dimensions	Area (sqft)	Counted as Living Area
6	Hall	25'9" x 3'8"	120 sq. ft	Yes
7	Office	20'11" x 12'6"	262 sq. ft	Yes
8	Laundry	4'11" x 16'7"	82 sq. ft	No
9	Bath	8'3" x 11'4"	82 sq. ft	No



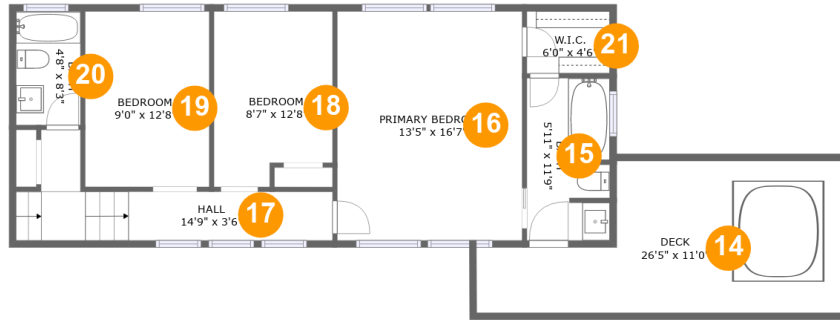
Room Dimensions

Floor 3

Total sqft: 1148

Living area: 836

#	Room name	Dimensions	Area (sqft)	Counted as Living Area
10	Patio	18'3" x 16'5"	300 sq. ft	No
11	Living Room	13'10" x 20'4"	282 sq. ft	Yes
12	Dining Area	17'8" x 16'7"	333 sq. ft	Yes
13	Kitchen	13'10" x 10'11"	152 sq. ft	Yes



Room Dimensions

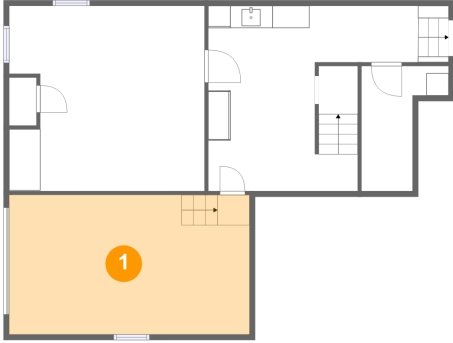
Floor 4

Total sqft: 1010

Living area: 783

#	Room name	Dimensions	Area (sqft)	Counted as Living Area
14	Deck	26'5" x 11'0"	227 sq. ft	No
15	Bath	5'11" x 11'9"	68 sq. ft	Yes
16	Primary Bedroom	13'5" x 16'7"	222 sq. ft	Yes
17	Hall	14'9" x 3'6"	94 sq. ft	Yes
18	Bedroom	8'7" x 12'8"	101 sq. ft	Yes
19	Bedroom	9'0" x 12'8"	114 sq. ft	Yes
20	Bath	4'8" x 8'3"	38 sq. ft	Yes
21	W.i.c.	6'0" x 4'6"	27 sq. ft	Yes

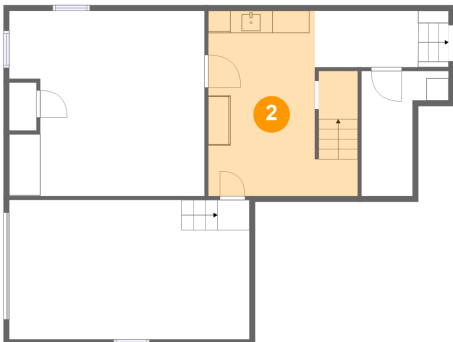
1 Floor 1 - Garage



Dimensions: 21'6" x 12'6"
Area: 268 sq. ft
Counted as Living Area: No

Heated: No
Finished: No
Enclosed: Yes
Contiguous: Yes
Permitted: Yes
Wet Space: No
Addition: No
Conversion: No

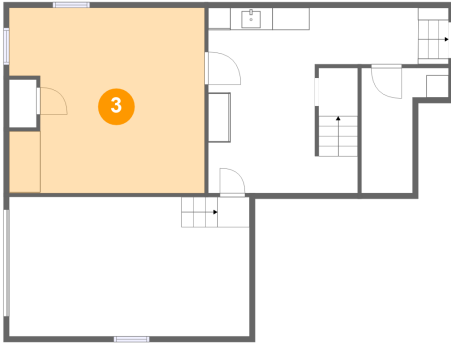
2 Floor 1 - Kitchenette



Dimensions: 13'5" x 16'7"
Area: 198 sq. ft
Counted as Living Area:
Yes

Heated: Yes
Finished: Yes
Enclosed: Yes
Contiguous:
Yes
Permitted: Yes
Wet Space: No
Addition: No
Conversion: No

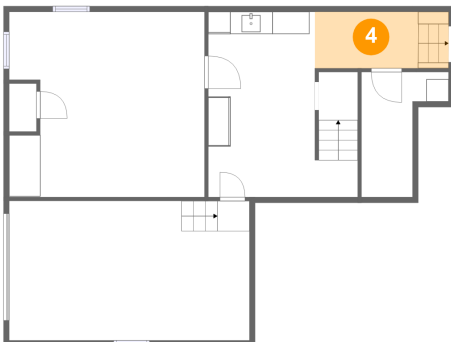
3 Floor 1 - Office



Dimensions: 17'5" x 16'6"
Area: 276 sq. ft
Counted as Living Area: No

Heated: Yes
Finished: Yes
Enclosed: Yes
Contiguous: Yes
Permitted: Yes
Wet Space: No
Addition: No
Conversion: No

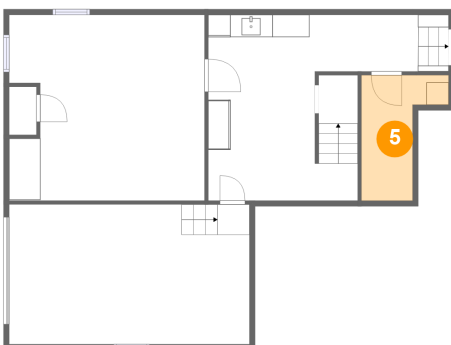
4 Floor 1 - Hall



Dimensions: 9'3" x 5'1"
Area: 60 sq. ft
Counted as Living Area:
Yes

Heated: Yes
Finished: Yes
Enclosed: Yes
Contiguous:
Yes
Permitted: Yes
Wet Space: No
Addition: No
Conversion: No

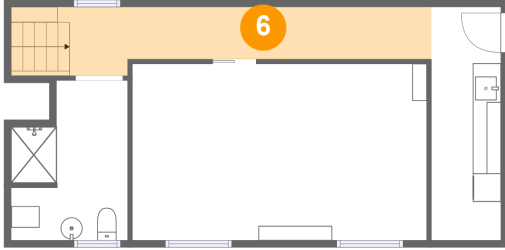
5 Floor 1 - Electrical Room



Dimensions: 7'10" x 11'2"
Area: 60 sq. ft
Counted as Living Area: No

Heated: No
Finished: No
Enclosed: Yes
Contiguous: Yes
Permitted: Yes
Wet Space: No
Addition: No
Conversion: No

6 Floor 2 - Hall



Dimensions: 25'9" x 3'8"
Area: 120 sq. ft
Counted as Living Area:
Yes

Heated: Yes
Finished: Yes
Enclosed: Yes
Contiguous:
Yes
Permitted: Yes
Wet Space: No
Addition: No
Conversion: No

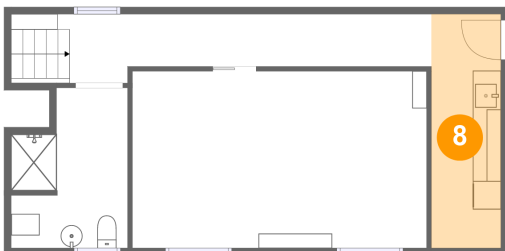
7 Floor 2 - Office



Dimensions: 20'11" x 12'6"
Area: 262 sq. ft
Counted as Living Area:
Yes

Heated: Yes
Finished: Yes
Enclosed: Yes
Contiguous:
Yes
Permitted: Yes
Wet Space: No
Addition: No
Conversion: No

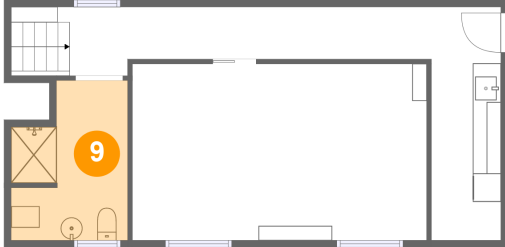
8 Floor 2 - Laundry



Dimensions: 4'11" x 16'7"
Area: 82 sq. ft
Counted as Living Area: No

Heated: Yes
Finished: Yes
Enclosed: Yes
Contiguous: Yes
Permitted: Yes
Wet Space: No
Addition: No
Conversion: No

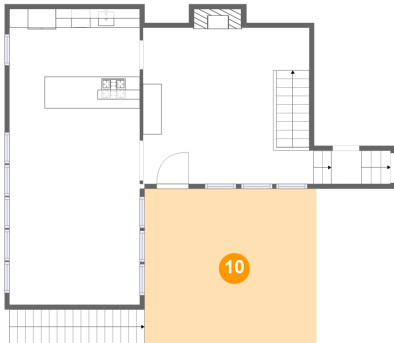
9 Floor 2 - Bath



Dimensions: 8'3" x 11'4"
Area: 82 sq. ft
Counted as Living Area: No

Heated: Yes
Finished: Yes
Enclosed: Yes
Contiguous: Yes
Permitted: Yes
Wet Space: Yes
Addition: No
Conversion: No

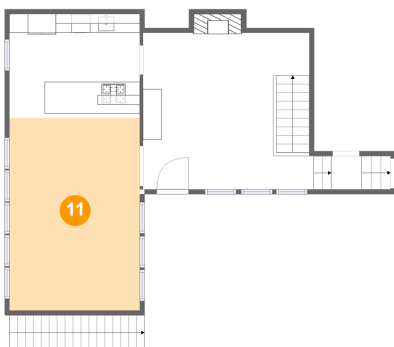
10 Floor 3 - Patio



Dimensions: 18'3" x 16'5"
Area: 300 sq. ft
Counted as Living Area: No

Heated: No
Finished: Yes
Enclosed: No
Contiguous: Yes
Permitted: Yes
Wet Space: No
Addition: No
Conversion: No

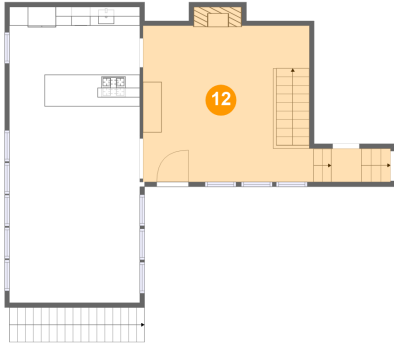
11 Floor 3 - Living Room



Dimensions: 13'10" x 20'4"
Area: 282 sq. ft
Counted as Living Area:
Yes

Heated: Yes
Finished: Yes
Enclosed: Yes
Contiguous:
Yes
Permitted: Yes
Wet Space: No
Addition: No
Conversion: No

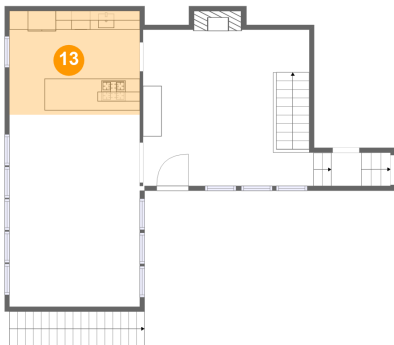
12 Floor 3 - Dining Area



Dimensions: 17'8" x 16'7"
Area: 333 sq. ft
Counted as Living Area:
Yes

Heated: Yes
Finished: Yes
Enclosed: Yes
Contiguous:
Yes
Permitted: Yes
Wet Space: No
Addition: No
Conversion: No

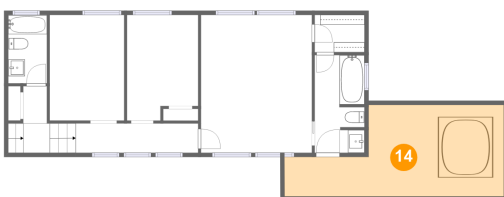
13 Floor 3 - Kitchen



Dimensions: 13'10" x 10'11"
Area: 152 sq. ft
Counted as Living Area:
Yes

Heated: Yes
Finished: Yes
Enclosed: Yes
Contiguous:
Yes
Permitted: Yes
Wet Space: No
Addition: No
Conversion: No

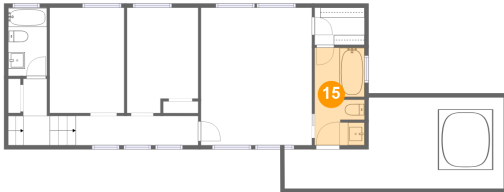
14 Floor 4 - Deck



Dimensions: 26'5" x 11'0"
Area: 227 sq. ft
Counted as Living Area: No

Heated: No
Finished: Yes
Enclosed: No
Contiguous: Yes
Permitted: Yes
Wet Space: No
Addition: No
Conversion: No

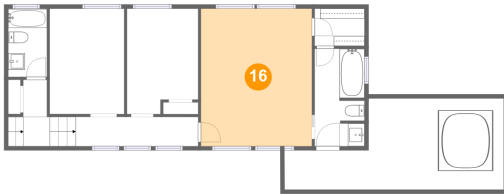
15 Floor 4 - Bath



Dimensions: 5'11" x 11'9"
Area: 68 sq. ft
Counted as Living Area:
Yes

Heated: Yes
Finished: Yes
Enclosed: Yes
Contiguous:
Yes
Permitted: Yes
Wet Space: Yes
Addition: No
Conversion: No

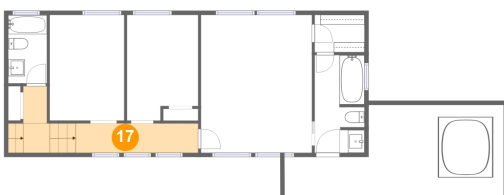
16 Floor 4 - Primary Bedroom



Dimensions: 13'5" x 16'7"
Area: 222 sq. ft
Counted as Living Area:
Yes

Heated: Yes
Finished: Yes
Enclosed: Yes
Contiguous:
Yes
Permitted: Yes
Wet Space: No
Addition: No
Conversion: No

17 Floor 4 - Hall



Dimensions: 14'9" x 3'6"
Area: 94 sq. ft
Counted as Living Area:
Yes

Heated: Yes
Finished: Yes
Enclosed: Yes
Contiguous:
Yes
Permitted: Yes
Wet Space: No
Addition: No
Conversion: No

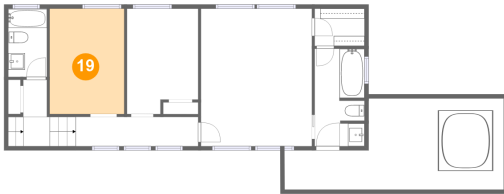
18 Floor 4 - Bedroom



Dimensions: 8'7" x 12'8"
Area: 101 sq. ft
Counted as Living Area:
Yes

Heated: Yes
Finished: Yes
Enclosed: Yes
Contiguous:
Yes
Permitted: Yes
Wet Space: No
Addition: No
Conversion: No

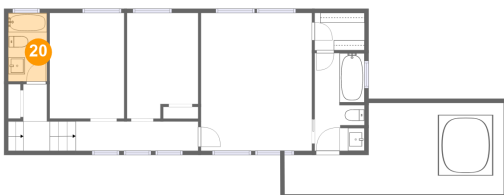
19 Floor 4 - Bedroom



Dimensions: 9'0" x 12'8"
Area: 114 sq. ft
Counted as Living Area:
Yes

Heated: Yes
Finished: Yes
Enclosed: Yes
Contiguous:
Yes
Permitted: Yes
Wet Space: No
Addition: No
Conversion: No

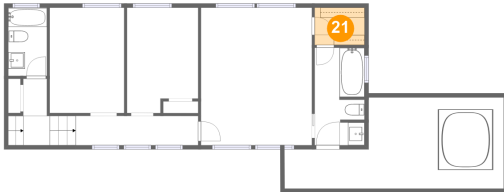
20 Floor 4 - Bath



Dimensions: 4'8" x 8'3"
Area: 38 sq. ft
Counted as Living Area:
Yes

Heated: Yes
Finished: Yes
Enclosed: Yes
Contiguous:
Yes
Permitted: Yes
Wet Space: Yes
Addition: No
Conversion: No

21 Floor 4 - W.i.c.



Dimensions: 6'0" x 4'6"
Area: 27 sq. ft
Counted as Living Area:
Yes

Heated: Yes
Finished: Yes
Enclosed: Yes
Contiguous:
Yes
Permitted: Yes
Wet Space: No
Addition: No
Conversion: No