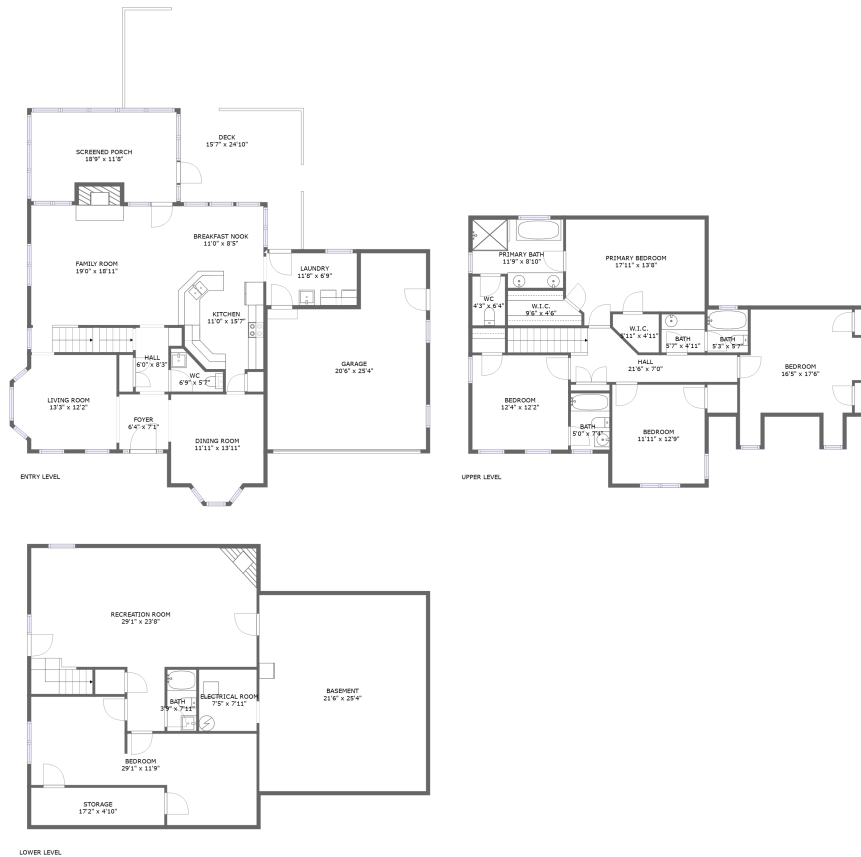


6191 Steeplechase Drive, Homewood, Roanoke, Roanoke County, Virginia, United States, 24018

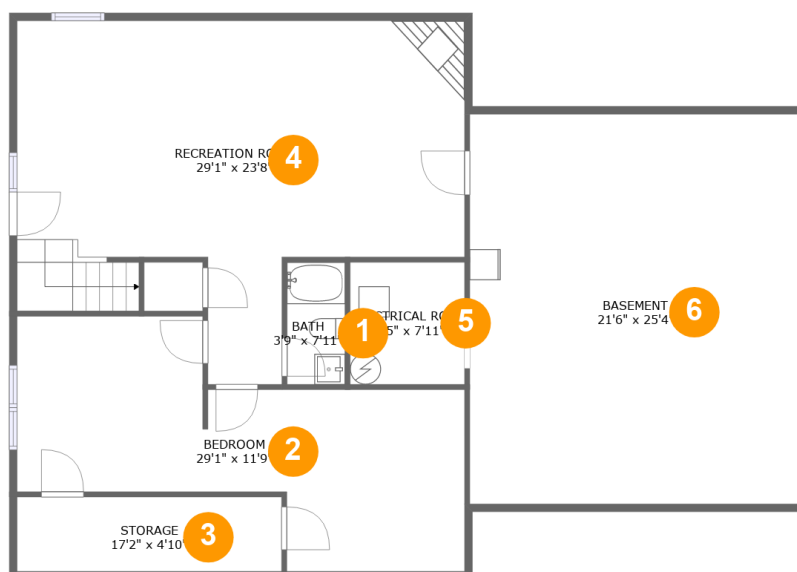


Property summary

 **1** Garages
  **5** Bedrooms
  **4** Bathrooms
  **1** Half baths

 **3** Floors
  **3,470** Gross living area sqft
  **5,310** Total sqft

6191 Steeplechase Drive, Homewood, Roanoke, Roanoke County, Virginia, United States, 24018



Room dimensions

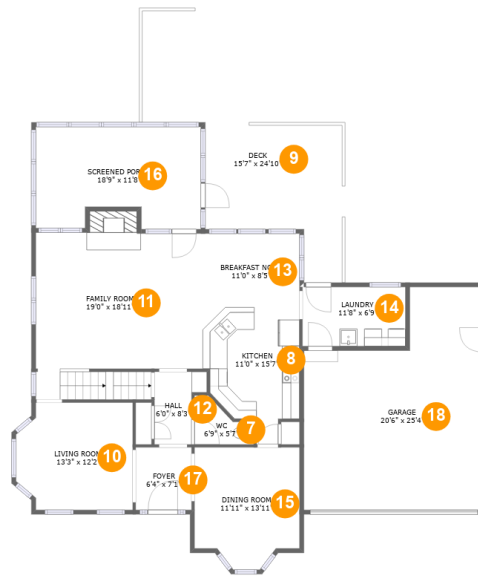
Floor 1

Total sqft: 1681

Living area: 946

#		Dimensions	sqft	Counted as living area
1	Bath	3'9" x 7'11"	30 sq. ft	Yes
2	Bedroom	29'1" x 11'9"	310 sq. ft	Yes
3	Storage	17'2" x 4'10"	83 sq. ft	No
4	Recreation Room	29'1" x 23'8"	514 sq. ft	Yes
5	Electrical Room	7'5" x 7'11"	59 sq. ft	No
6	Basement	21'6" x 25'4"	545 sq. ft	No

6191 Steeplechase Drive, Homewood, Roanoke, Roanoke County, Virginia, United States, 24018



Room dimensions

Floor 2

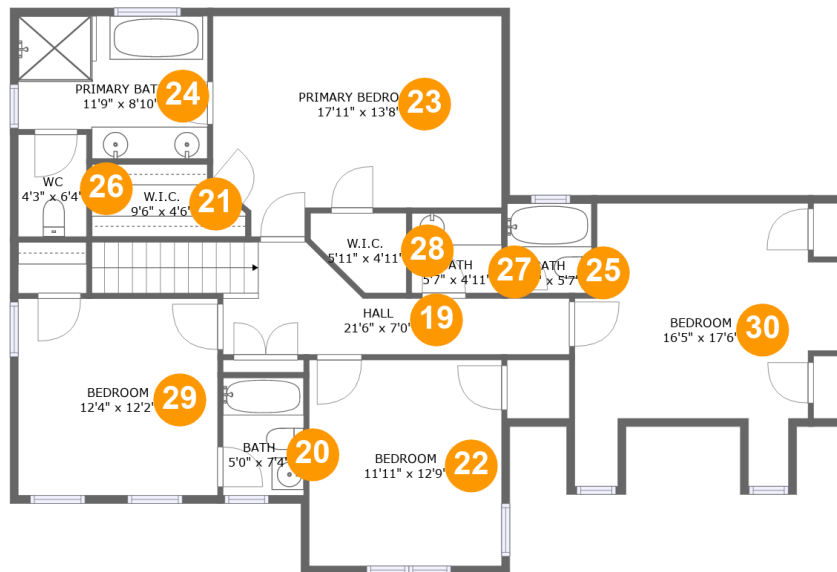
Total sqft: 2290 Living area: 1185

#		Dimensions	sqft	Counted as living area
7	WC	6'9" x 5'7"	26 sq. ft	Yes
8	Kitchen	11'0" x 15'7"	138 sq. ft	Yes
9	Deck	15'7" x 24'10"	407 sq. ft	No
10	Living Room	13'3" x 12'2"	151 sq. ft	Yes
11	Family Room	19'0" x 18'11"	350 sq. ft	Yes
12	Hall	6'0" x 8'3"	39 sq. ft	Yes
13	Breakfast Nook	11'0" x 8'5"	92 sq. ft	Yes
14	Laundry	11'8" x 6'9"	79 sq. ft	Yes
15	Dining Room	11'11" x 13'11"	149 sq. ft	Yes
16	Screened Porch	18'9" x 11'8"	201 sq. ft	No
17	Foyer	6'4" x 7'1"	45 sq. ft	Yes

6191 Steeplechase Drive, Homewood, Roanoke, Roanoke County, Virginia, United States, 24018

#		Dimensions	sqft	Counted as living area
18	Garage	20'6" x 25'4"	431 sq. ft	No

6191 Steeplechase Drive, Homewood, Roanoke, Roanoke County, Virginia, United States, 24018



Room dimensions

Floor 3

Total sqft: 1339 Living area: 1339

#		Dimensions	sqft	Counted as living area
19	Hall	21'6" x 7'0"	125 sq. ft	Yes
20	Bath	5'0" x 7'4"	37 sq. ft	Yes
21	W.I.C.	9'6" x 4'6"	38 sq. ft	Yes
22	Bedroom	11'11" x 12'9"	153 sq. ft	Yes
23	Primary Bedroom	17'11" x 13'8"	217 sq. ft	Yes
24	Primary Bath	11'9" x 8'10"	96 sq. ft	Yes
25	Bath	5'3" x 5'7"	29 sq. ft	Yes
26	WC	4'3" x 6'4"	27 sq. ft	Yes
27	Bath	5'7" x 4'11"	28 sq. ft	Yes
28	W.I.C.	5'11" x 4'11"	24 sq. ft	Yes
29	Bedroom	12'4" x 12'2"	151 sq. ft	Yes

Scan captured on Tue, 21 Jan 2025 18:13:51 GMT

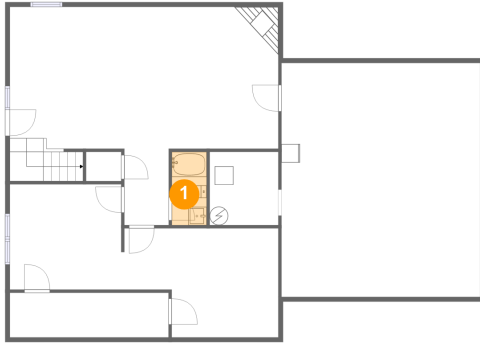
Information is calculated by Cubicasa technology deemed highly reliable but not guaranteed.

6191 Steeplechase Drive, Homewood, Roanoke, Roanoke County, Virginia, United States, 24018

#		Dimensions	sqft	Counted as living area
30	Bedroom	16'5" x 17'6"	217 sq. ft	Yes

6191 Steeplechase Drive, Homewood, Roanoke, Roanoke County, Virginia, United States, 24018

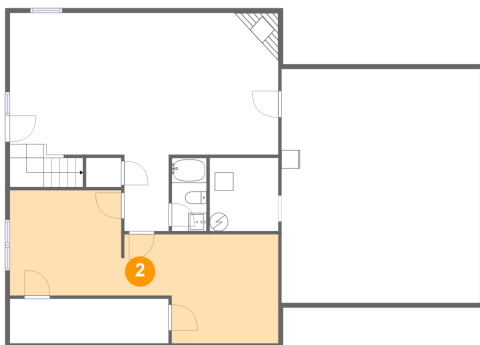
1 Floor 1 - Bath



Dimensions: 3'9" x 7'11"
Area: 30 sq. ft
Counted as living area: Yes

Heated: Yes
Finished: Yes
Enclosed: Yes
Contiguous: Yes
Permitted: Yes
Wet space: Yes
Addition: No
Conversion: No

2 Floor 1 - Bedroom

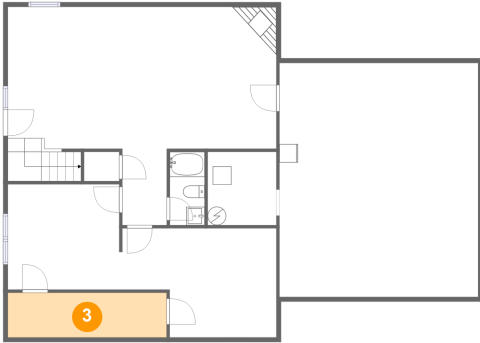


Dimensions: 29'1" x 11'9"
Area: 310 sq. ft
Counted as living area: Yes

Heated: Yes
Finished: Yes
Enclosed: Yes
Contiguous: Yes
Permitted: Yes
Wet space: No
Addition: No
Conversion: No

**6191 Steeplechase Drive, Homewood, Roanoke,
Roanoke County, Virginia, United States, 24018**

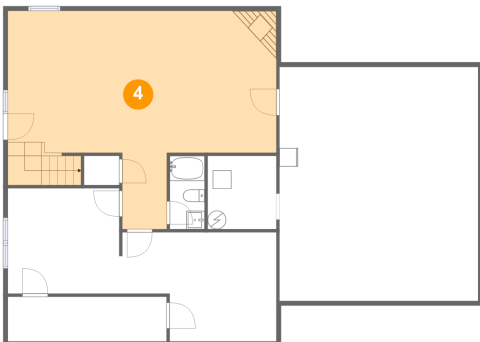
3 Floor 1 - Storage



Dimensions: 17'2" x 4'10"
Area: 83 sq. ft
Counted as living area: No

Heated: No
Finished: No
Enclosed: No
Contiguous: Yes
Permitted: Yes
Wet space: No
Addition: No
Conversion: No

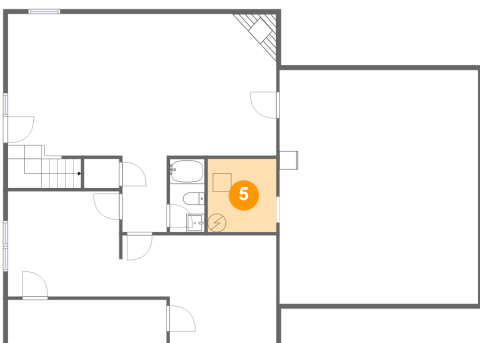
4 Floor 1 - Recreation Room



Dimensions: 29'1" x 23'8"
Area: 514 sq. ft
Counted as living area: Yes

Heated: Yes
Finished: Yes
Enclosed: Yes
Contiguous: Yes
Permitted: Yes
Wet space: No
Addition: No
Conversion: No

5 Floor 1 - Electrical Room

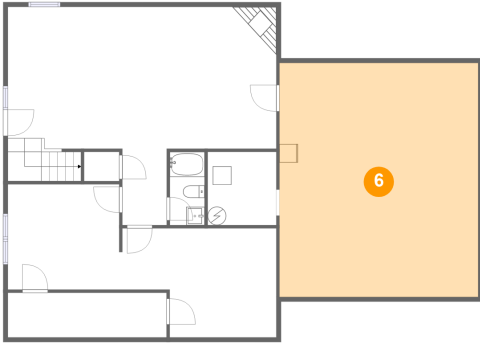


Dimensions: 7'5" x 7'11"
Area: 59 sq. ft
Counted as living area: No

Heated: No
Finished: No
Enclosed: Yes
Contiguous: Yes
Permitted: Yes
Wet space: No
Addition: No
Conversion: No

6191 Steeplechase Drive, Homewood, Roanoke, Roanoke County, Virginia, United States, 24018

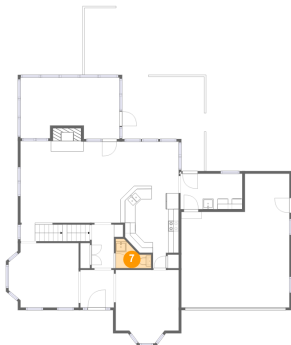
6 Floor 1 - Basement



Dimensions: 21'6" x 25'4"
Area: 545 sq. ft
Counted as living area: No

Heated: Yes
Finished: No
Enclosed: Yes
Contiguous: Yes
Permitted: Yes
Wet space: No
Addition: No
Conversion: No

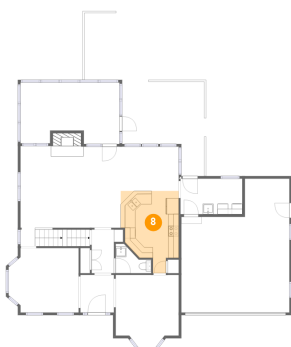
7 Floor 2 - WC



Dimensions: 6'9" x 5'7"
Area: 26 sq. ft
Counted as living area: Yes

Heated: Yes
Finished: Yes
Enclosed: Yes
Contiguous: Yes
Permitted: Yes
Wet space: Yes
Addition: No
Conversion: No

8 Floor 2 - Kitchen



Dimensions: 11'0" x 15'7"
Area: 138 sq. ft
Counted as living area: Yes

Heated: Yes
Finished: Yes
Enclosed: Yes
Contiguous: Yes
Permitted: Yes
Wet space: No
Addition: No
Conversion: No

6191 Steeplechase Drive, Homewood, Roanoke, Roanoke County, Virginia, United States, 24018

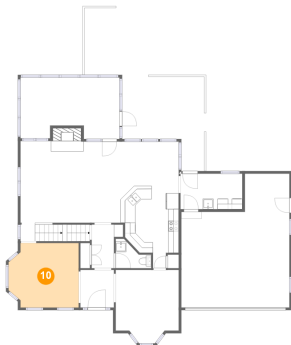
9 Floor 2 - Deck



Dimensions: 15'7" x 24'10"
Area: 407 sq. ft
Counted as living area: No

Heated: No
Finished: Yes
Enclosed: No
Contiguous: Yes
Permitted: Yes
Wet space: No
Addition: No
Conversion: No

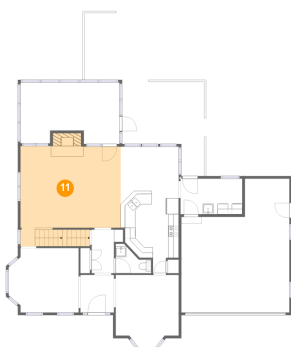
10 Floor 2 - Living Room



Dimensions: 13'3" x 12'2"
Area: 151 sq. ft
Counted as living area: Yes

Heated: Yes
Finished: Yes
Enclosed: Yes
Contiguous: Yes
Permitted: Yes
Wet space: No
Addition: No
Conversion: No

11 Floor 2 - Family Room

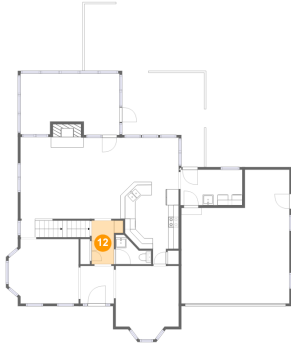


Dimensions: 19'0" x 18'11"
Area: 350 sq. ft
Counted as living area: Yes

Heated: Yes
Finished: Yes
Enclosed: Yes
Contiguous: Yes
Permitted: Yes
Wet space: No
Addition: No
Conversion: No

6191 Steeplechase Drive, Homewood, Roanoke, Roanoke County, Virginia, United States, 24018

12 Floor 2 - Hall



Dimensions: 6'0" x 8'3"
Area: 39 sq. ft
Counted as living area: Yes

Heated: Yes
Finished: Yes
Enclosed: Yes
Contiguous: Yes
Permitted: Yes
Wet space: No
Addition: No
Conversion: No

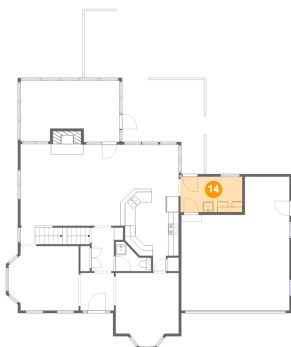
13 Floor 2 - Breakfast Nook



Dimensions: 11'0" x 8'5"
Area: 92 sq. ft
Counted as living area: Yes

Heated: Yes
Finished: Yes
Enclosed: Yes
Contiguous: Yes
Permitted: Yes
Wet space: No
Addition: No
Conversion: No

14 Floor 2 - Laundry



Dimensions: 11'8" x 6'9"
Area: 79 sq. ft
Counted as living area: Yes

Heated: Yes
Finished: Yes
Enclosed: Yes
Contiguous: Yes
Permitted: Yes
Wet space: No
Addition: No
Conversion: No

6191 Steeplechase Drive, Homewood, Roanoke, Roanoke County, Virginia, United States, 24018

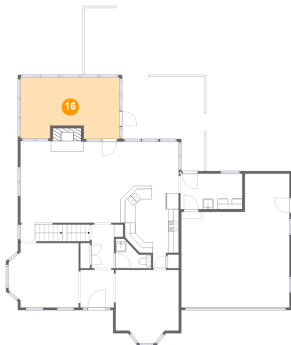
15 Floor 2 - Dining Room



Dimensions: 11'11" x 13'11"
Area: 149 sq. ft
Counted as living area: Yes

Heated: Yes
Finished: Yes
Enclosed: Yes
Contiguous: Yes
Permitted: Yes
Wet space: No
Addition: No
Conversion: No

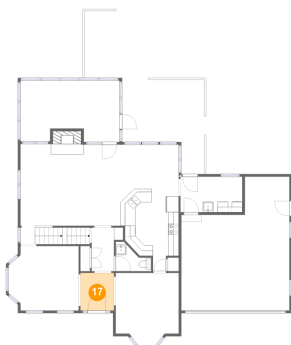
16 Floor 2 - Screened Porch



Dimensions: 18'9" x 11'8"
Area: 201 sq. ft
Counted as living area: No

Heated: No
Finished: Yes
Enclosed: No
Contiguous: Yes
Permitted: Yes
Wet space: No
Addition: No
Conversion: No

17 Floor 2 - Foyer



Dimensions: 6'4" x 7'1"
Area: 45 sq. ft
Counted as living area: Yes

Heated: Yes
Finished: Yes
Enclosed: Yes
Contiguous: Yes
Permitted: Yes
Wet space: No
Addition: No
Conversion: No

6191 Steeplechase Drive, Homewood, Roanoke, Roanoke County, Virginia, United States, 24018

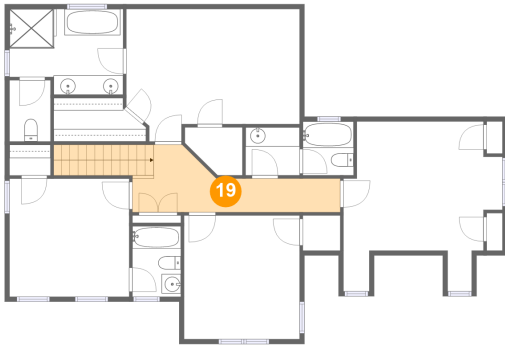
18 Floor 2 - Garage



Dimensions: 20'6" x 25'4"
Area: 431 sq. ft
Counted as living area: No

Heated: No
Finished: No
Enclosed: Yes
Contiguous: Yes
Permitted: Yes
Wet space: No
Addition: No
Conversion: No

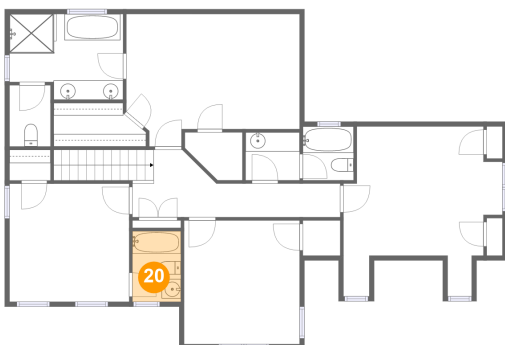
19 Floor 3 - Hall



Dimensions: 21'6" x 7'0"
Area: 125 sq. ft
Counted as living area: Yes

Heated: Yes
Finished: Yes
Enclosed: Yes
Contiguous: Yes
Permitted: Yes
Wet space: No
Addition: No
Conversion: No

20 Floor 3 - Bath

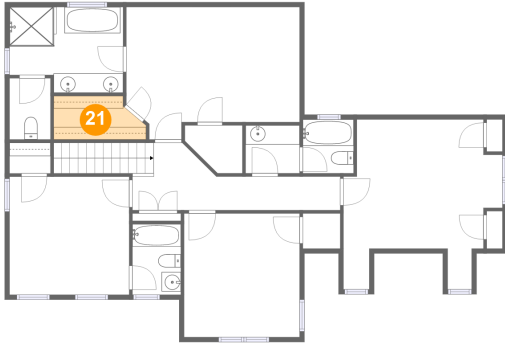


Dimensions: 5'0" x 7'4"
Area: 37 sq. ft
Counted as living area: Yes

Heated: Yes
Finished: Yes
Enclosed: Yes
Contiguous: Yes
Permitted: Yes
Wet space: Yes
Addition: No
Conversion: No

**6191 Steeplechase Drive, Homewood, Roanoke,
Roanoke County, Virginia, United States, 24018**

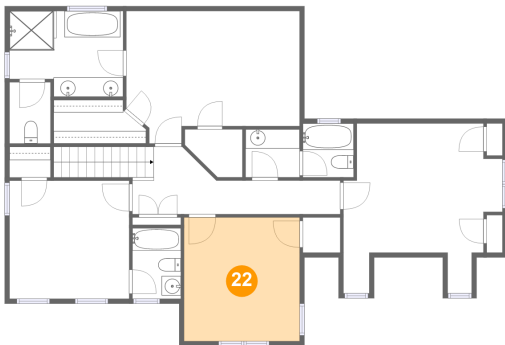
21 Floor 3 - W.I.C.



Dimensions: 9'6" x 4'6"
Area: 38 sq. ft
Counted as living area: Yes

Heated: Yes
Finished: Yes
Enclosed: Yes
Contiguous: Yes
Permitted: Yes
Wet space: No
Addition: No
Conversion: No

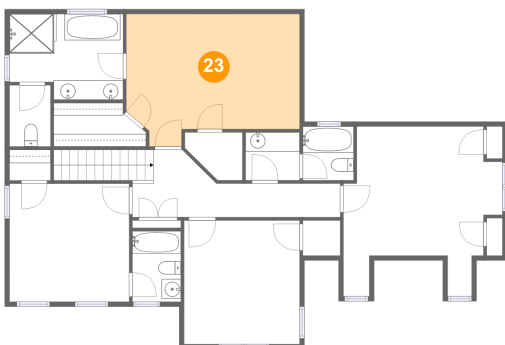
22 Floor 3 - Bedroom



Dimensions: 11'11" x 12'9"
Area: 153 sq. ft
Counted as living area: Yes

Heated: Yes
Finished: Yes
Enclosed: Yes
Contiguous: Yes
Permitted: Yes
Wet space: No
Addition: No
Conversion: No

23 Floor 3 - Primary Bedroom

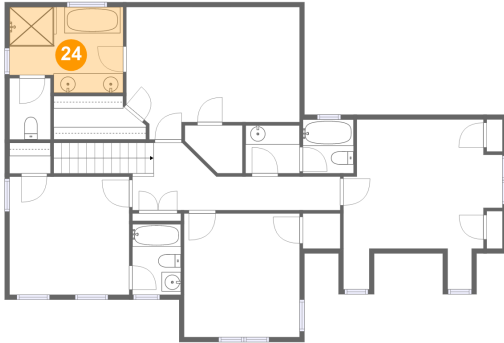


Dimensions: 17'11" x 13'8"
Area: 217 sq. ft
Counted as living area: Yes

Heated: Yes
Finished: Yes
Enclosed: Yes
Contiguous: Yes
Permitted: Yes
Wet space: No
Addition: No
Conversion: No

6191 Steeplechase Drive, Homewood, Roanoke, Roanoke County, Virginia, United States, 24018

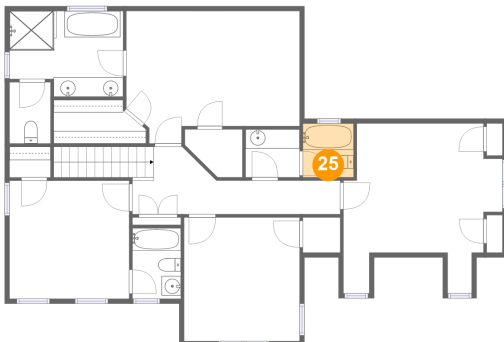
24 Floor 3 - Primary Bath



Dimensions: 11'9" x 8'10"
Area: 96 sq. ft
Counted as living area: Yes

Heated: Yes
Finished: Yes
Enclosed: Yes
Contiguous: Yes
Permitted: Yes
Wet space: Yes
Addition: No
Conversion: No

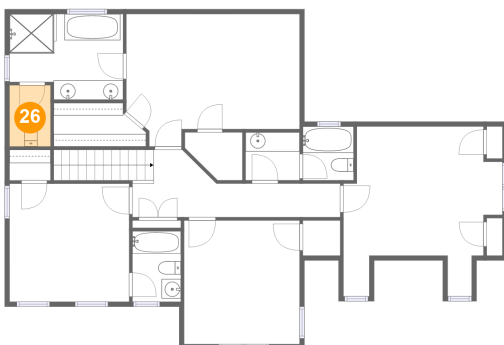
25 Floor 3 - Bath



Dimensions: 5'3" x 5'7"
Area: 29 sq. ft
Counted as living area: Yes

Heated: Yes
Finished: Yes
Enclosed: Yes
Contiguous: Yes
Permitted: Yes
Wet space: Yes
Addition: No
Conversion: No

26 Floor 3 - WC

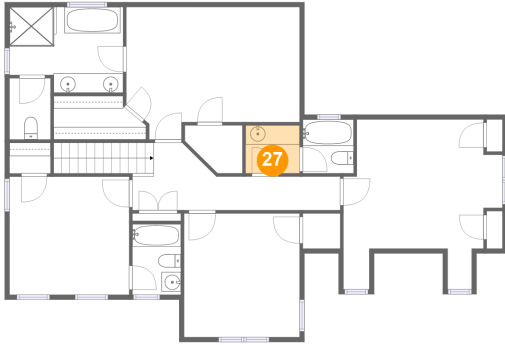


Dimensions: 4'3" x 6'4"
Area: 27 sq. ft
Counted as living area: Yes

Heated: Yes
Finished: Yes
Enclosed: Yes
Contiguous: Yes
Permitted: Yes
Wet space: Yes
Addition: No
Conversion: No

6191 Steeplechase Drive, Homewood, Roanoke, Roanoke County, Virginia, United States, 24018

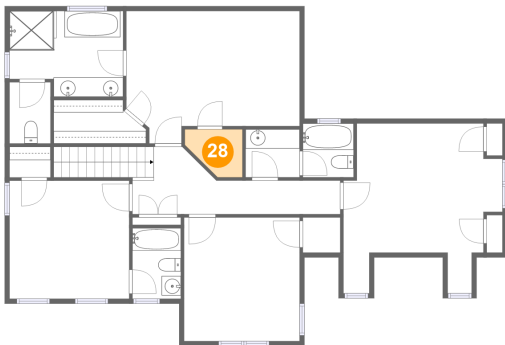
27 Floor 3 - Bath



Dimensions: 5'7" x 4'11"
Area: 28 sq. ft
Counted as living area: Yes

Heated: Yes
Finished: Yes
Enclosed: Yes
Contiguous: Yes
Permitted: Yes
Wet space: Yes
Addition: No
Conversion: No

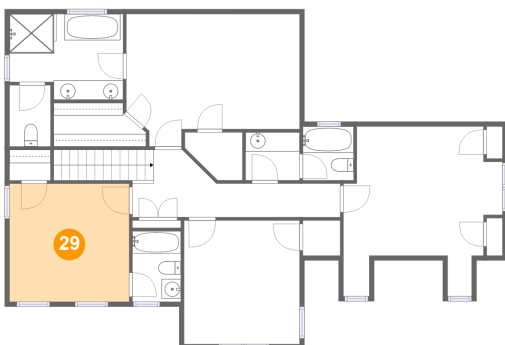
28 Floor 3 - W.I.C.



Dimensions: 5'11" x 4'11"
Area: 24 sq. ft
Counted as living area: Yes

Heated: Yes
Finished: Yes
Enclosed: Yes
Contiguous: Yes
Permitted: Yes
Wet space: No
Addition: No
Conversion: No

29 Floor 3 - Bedroom

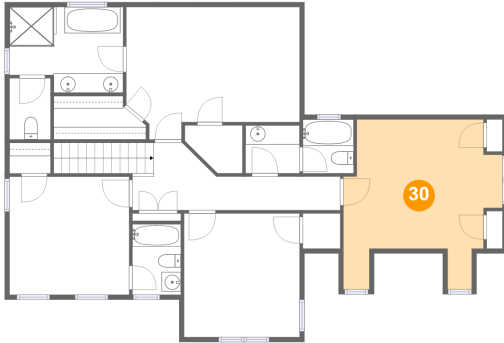


Dimensions: 12'4" x 12'2"
Area: 151 sq. ft
Counted as living area: Yes

Heated: Yes
Finished: Yes
Enclosed: Yes
Contiguous: Yes
Permitted: Yes
Wet space: No
Addition: No
Conversion: No

**6191 Steeplechase Drive, Homewood, Roanoke,
Roanoke County, Virginia, United States, 24018**

30 Floor 3 - Bedroom



Dimensions: 16'5" x 17'6"
Area: 217 sq. ft
Counted as living area: Yes

Heated: Yes
Finished: Yes
Enclosed: Yes
Contiguous: Yes
Permitted: Yes
Wet space: No
Addition: No
Conversion: No