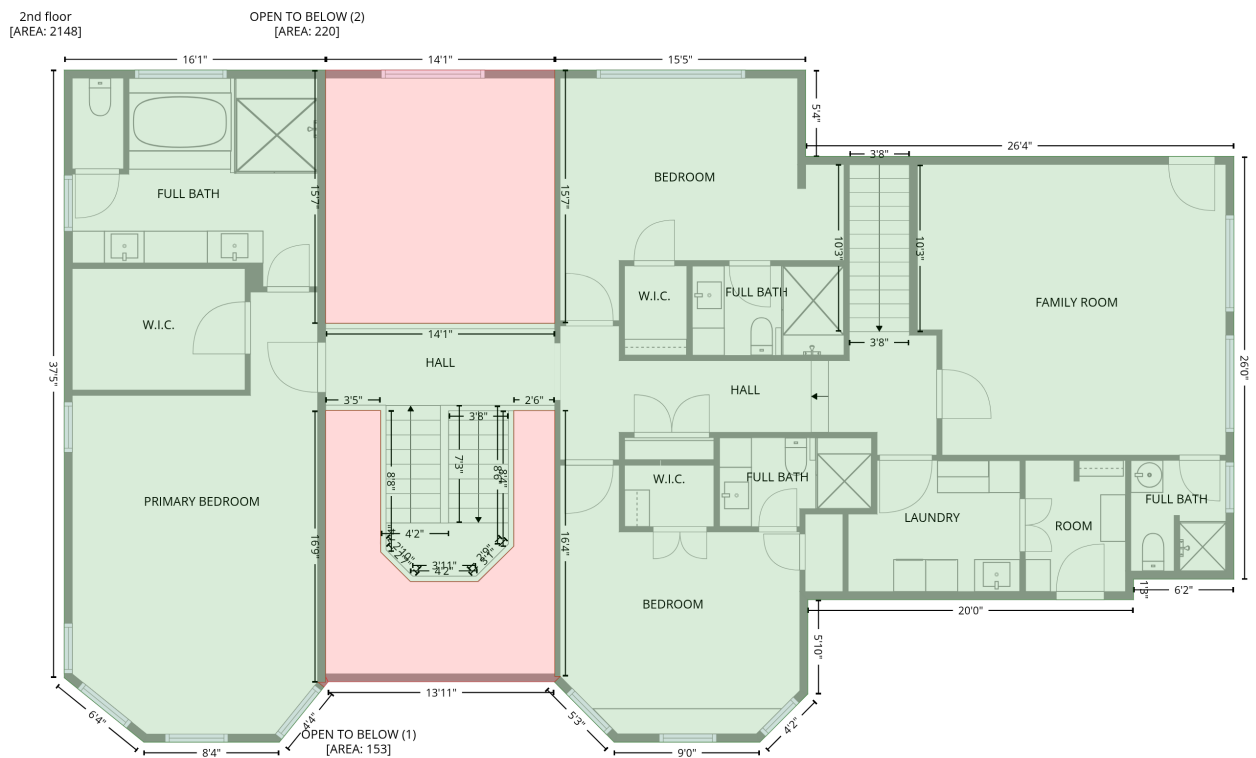




# 245 Stoneleigh Drive, King's Grant, Fayetteville, Cumberland County, North Carolina, United States, 28311

Gross Living Area: 4106 sq. ft

## Level 2



Space	Area (sq. ft)	Calculation
2nd floor (Living area)	2148	Coordinate Polygon Area Algorithm using inches $-((202.8 + 202.8) * (29.8 - 216.9) + (202.8 + 371.9) * (216.9 - 216.9) + (371.9 + 371.9) * (216.9 - 29.8) + (371.9 + 557.2) * (29.8 - 29.8) + (557.2 + 557.2) * (29.8 - 93.6) + (557.2 + 873.3) * (93.6 - 93.6) + (873.3 + 873.3) * (93.6 - 405.8) + (873.3 + 799.2) * (405.8 - 405.8) + (799.2 + 799.2) * (405.8 - 421) + (799.2 + 558.8) * (421 - 421) + (558.8 + 558.8) * (421 - 490.6) + (558.8 + 523.3) * (490.6 - 526.1) + (523.3 + 415.8) * (526.1 - 526.1) + (415.8 + 371.7) * (526.1 - 481.7) + (371.7 + 376) * (481.7 - 477.6) + (376 + 371.9) * (477.6 - 477.6) + (371.9 + 371.9) * (477.6 - 281.2) + (371.9 + 341.6) * (281.2 - 281.2) + (341.6 + 341.6) * (281.2 - 381.5) + (341.6 + 315) * (381.5 - 407.5) + (315 + 265.3) * (407.5 - 407.5) + (265.3 + 243.3) * (407.5 - 385.7) + (243.3 + 243.3) * (385.7 - 281.3) + (243.3 + 202.8) * (281.3 - 281.3) + (202.8 + 202.8) * (281.3 - 481.8) + (202.8 + 197.2) * (481.8 - 481.8) + (197.2 + 201.5) * (481.8 - 485.4) + (201.5 + 168.5) * (485.4 - 526.1) + (168.5 + 68.5) * (526.1 - 526.1) + (68.5 + 9.7) * (526.1 - 478.6) + (9.7 + 9.7) * (478.6 - 29.8) + (9.7 + 202.8) * (29.8 - 29.8)) * 0.5 * 0.00694$
OPEN TO BELOW (Non-living area)	153	$-((202.8 + 204.6) * (478 - 481.6) + (204.6 + 201.5) * (481.6 - 485.4) + (201.5 + 197.2) * (485.4 - 481.8) + (197.2 + 202.8) * (481.8 - 481.8) + (202.8 + 202.8) * (481.8 - 478)) * 0.5 * 0.00694 + -((371.9 + 371.9) * (281.2 - 477.6) + (371.9 + 376) * (477.6 - 477.6) + (376 + 371.7) * (477.6 - 481.7) + (371.7 + 371.5) * (481.7 - 481.6) + (371.5 + 204.6) * (481.6 - 481.6) + (204.6 + 202.8) * (481.6 - 478) + (202.8 + 202.8) * (478 - 281.3) + (202.8 + 243.3) * (281.3 - 281.3) + (243.3 + 243.3) * (281.3 - 385.7) + (243.3 + 265.3) * (385.7 - 407.5) + (265.3 + 315) * (407.5 - 407.5) + (315 + 341.6) * (407.5 - 381.5) + (341.6 + 341.6) * (381.5 - 281.2) + (341.6 + 371.9) * (281.2 - 281.2)) * 0.5 * 0.00694$
OPEN TO BELOW (Non-living area)	220	$-((371.9 + 371.9) * (29.8 - 216.9) + (371.9 + 202.8) * (216.9 - 216.9) + (202.8 + 202.8) * (216.9 - 29.8) + (202.8 + 371.9) * (29.8 - 29.8)) * 0.5 * 0.00694$