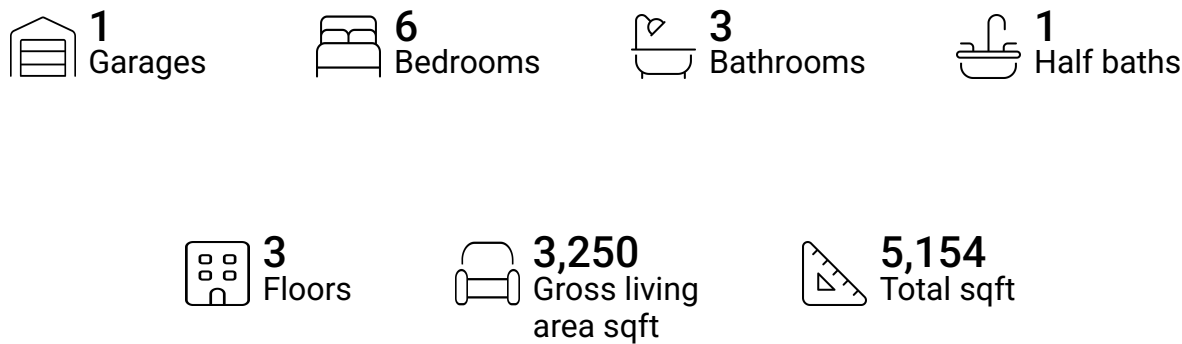


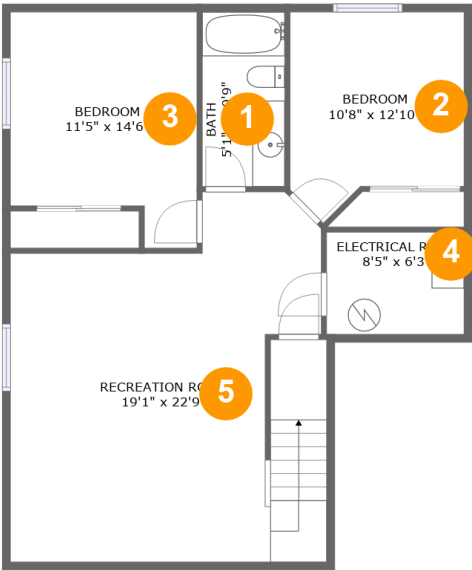
403 S Maple Ave,Eaton,CO,US



Property summary



403 S Maple Ave,Eaton,CO,US

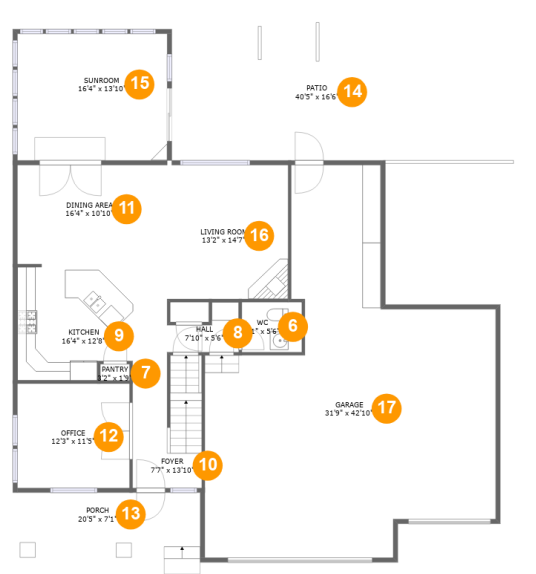


Room dimensions

Floor 1

Total sqft: 886 Living area: 824

#		Dimensions	sqft	Counted as living area
1	Bath	5'1" x 10'9"	54 sq. ft	Yes
2	Bedroom	10'8" x 12'10"	120 sq. ft	Yes
3	Bedroom	11'5" x 14'6"	145 sq. ft	Yes
4	Electrical Room	8'5" x 6'3"	53 sq. ft	No
5	Recreation Room	19'1" x 22'9"	388 sq. ft	Yes

403 S Maple Ave, Eaton, CO, US**Room dimensions****Floor 2****Total sqft: 2995 Living area: 1217**

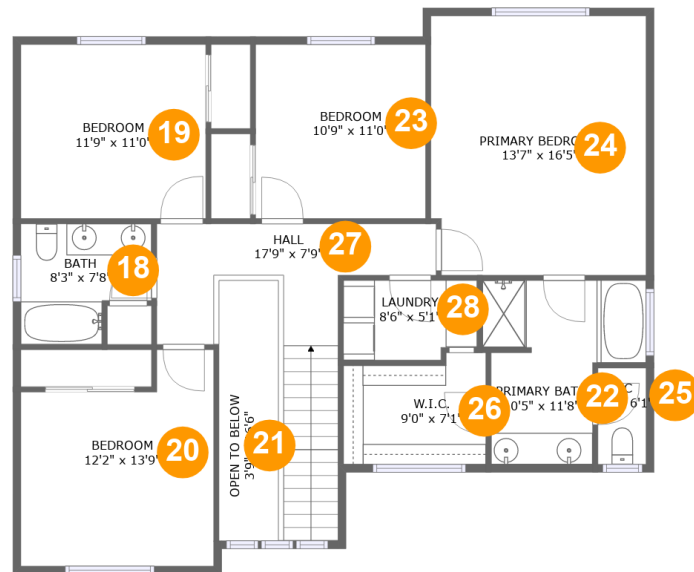
#		Dimensions	sqft	Counted as living area
6	WC	5'1" x 5'6"	36 sq. ft	Yes
7	Pantry	3'2" x 1'9"	6 sq. ft	Yes
8	Hall	7'10" x 5'6"	30 sq. ft	Yes
9	Kitchen	16'4" x 12'8"	190 sq. ft	Yes
10	Foyer	7'7" x 13'10"	104 sq. ft	Yes
11	Dining Area	16'4" x 10'10"	177 sq. ft	Yes
12	Office	12'3" x 11'5"	139 sq. ft	Yes
13	Porch	20'5" x 7'1"	145 sq. ft	No
14	Patio	40'5" x 16'6"	670 sq. ft	No
15	Sunroom	16'4" x 13'10"	226 sq. ft	Yes
16	Living Room	13'2" x 14'7"	193 sq. ft	Yes

Scan captured on Fri, 28 Mar 2025 14:27:53 GMT

Information is calculated by Cubicasa technology deemed highly reliable but not guaranteed.

403 S Maple Ave,Eaton,CO,US

#		Dimensions	sqft	Counted as living area
17	Garage	31'9" x 42'10"	911 sq. ft	No

403 S Maple Ave, Eaton, CO, US

Room dimensions

Floor 3

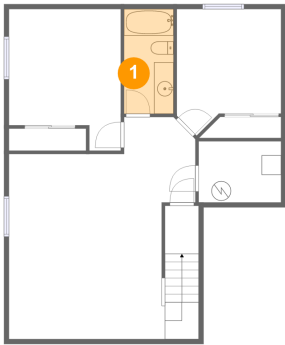
Total sqft: 1273 Living area: 1209

#		Dimensions	sqft	Counted as living area
18	Bath	8'3" x 7'8"	55 sq. ft	Yes
19	Bedroom	11'9" x 11'0"	129 sq. ft	Yes
20	Bedroom	12'2" x 13'9"	145 sq. ft	Yes
21	Open To Below	3'9" x 16'6"	62 sq. ft	No
22	Primary Bath	10'5" x 11'8"	94 sq. ft	Yes
23	Bedroom	10'9" x 11'0"	119 sq. ft	Yes
24	Primary Bedroom	13'7" x 16'5"	222 sq. ft	Yes
25	WC	3'1" x 6'1"	19 sq. ft	Yes
26	W.I.C.	9'0" x 7'1"	59 sq. ft	Yes
27	Hall	17'9" x 7'9"	140 sq. ft	Yes
28	Laundry	8'6" x 5'1"	42 sq. ft	Yes

Scan captured on Fri, 28 Mar 2025 14:27:53 GMT

Information is calculated by Cubicasa technology deemed highly reliable but not guaranteed.

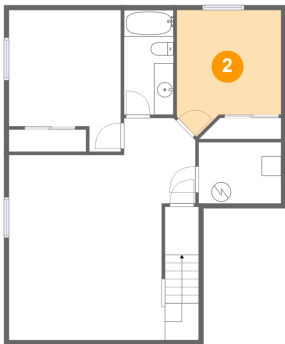
1 Floor 1 - Bath



Dimensions: 5'1" x 10'9"
Area: 54 sq. ft
Counted as living area: Yes

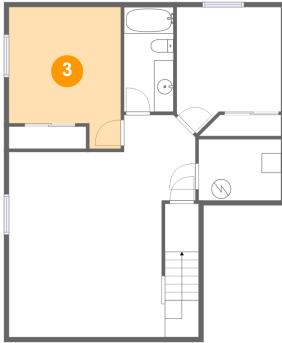
Heated: Yes
Finished: Yes
Enclosed: Yes
Contiguous: Yes
Permitted: Yes
Wet space: Yes
Addition: No
Conversion: No

2 Floor 1 - Bedroom



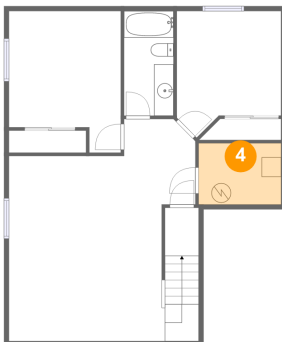
Dimensions: 10'8" x 12'10"
Area: 120 sq. ft
Counted as living area: Yes

Heated: Yes
Finished: Yes
Enclosed: Yes
Contiguous: Yes
Permitted: Yes
Wet space: No
Addition: No
Conversion: No

3 Floor 1 - Bedroom

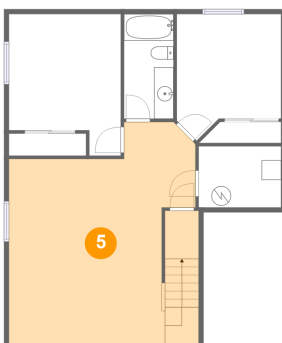
Dimensions: 11'5" x 14'6"
Area: 145 sq. ft
Counted as living area: Yes

Heated: Yes
Finished: Yes
Enclosed: Yes
Contiguous: Yes
Permitted: Yes
Wet space: No
Addition: No
Conversion: No

4 Floor 1 - Electrical Room

Dimensions: 8'5" x 6'3"
Area: 53 sq. ft
Counted as living area: No

Heated: No
Finished: No
Enclosed: Yes
Contiguous: Yes
Permitted: Yes
Wet space: No
Addition: No
Conversion: No

5 Floor 1 - Recreation Room

Dimensions: 19'1" x 22'9"
Area: 388 sq. ft
Counted as living area: Yes

Heated: Yes
Finished: Yes
Enclosed: Yes
Contiguous: Yes
Permitted: Yes
Wet space: No
Addition: No
Conversion: No

6 Floor 2 - WC



Dimensions: 5'1" x 5'6"
Area: 36 sq. ft
Counted as living area: Yes

Heated: Yes
Finished: Yes
Enclosed: Yes
Contiguous: Yes
Permitted: Yes
Wet space: Yes
Addition: No
Conversion: No

7 Floor 2 - Pantry



Dimensions: 3'2" x 1'9"
Area: 6 sq. ft
Counted as living area: Yes

Heated: Yes
Finished: Yes
Enclosed: Yes
Contiguous: Yes
Permitted: Yes
Wet space: No
Addition: No
Conversion: No

8 Floor 2 - Hall



Dimensions: 7'10" x 5'6"
Area: 30 sq. ft
Counted as living area: Yes

Heated: Yes
Finished: Yes
Enclosed: Yes
Contiguous: Yes
Permitted: Yes
Wet space: No
Addition: No
Conversion: No

9 Floor 2 - Kitchen

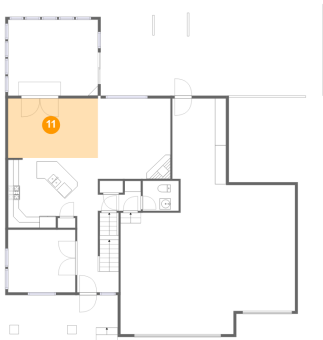
Dimensions: 16'4" x 12'8"
Area: 190 sq. ft
Counted as living area: Yes

Heated: Yes
Finished: Yes
Enclosed: Yes
Contiguous: Yes
Permitted: Yes
Wet space: No
Addition: No
Conversion: No

10 Floor 2 - Foyer

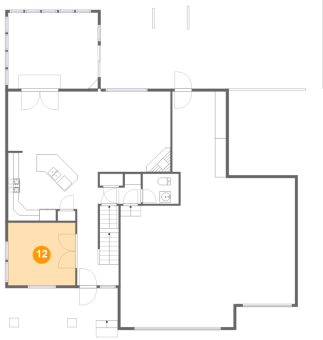
Dimensions: 7'7" x 13'10"
Area: 104 sq. ft
Counted as living area: Yes

Heated: Yes
Finished: Yes
Enclosed: Yes
Contiguous: Yes
Permitted: Yes
Wet space: No
Addition: No
Conversion: No

11 Floor 2 - Dining Area

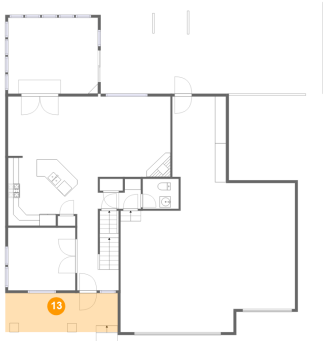
Dimensions: 16'4" x 10'10"
Area: 177 sq. ft
Counted as living area: Yes

Heated: Yes
Finished: Yes
Enclosed: Yes
Contiguous: Yes
Permitted: Yes
Wet space: No
Addition: No
Conversion: No

12 Floor 2 - Office

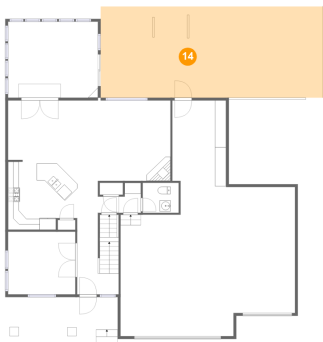
Dimensions: 12'3" x 11'5"
Area: 139 sq. ft
Counted as living area: Yes

Heated: Yes
Finished: Yes
Enclosed: Yes
Contiguous: Yes
Permitted: Yes
Wet space: No
Addition: No
Conversion: No

13 Floor 2 - Porch

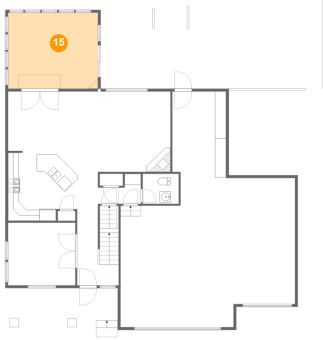
Dimensions: 20'5" x 7'1"
Area: 145 sq. ft
Counted as living area: No

Heated: No
Finished: Yes
Enclosed: No
Contiguous: Yes
Permitted: Yes
Wet space: No
Addition: No
Conversion: No

14 Floor 2 - Patio

Dimensions: 40'5" x 16'6"
Area: 670 sq. ft
Counted as living area: No

Heated: No
Finished: Yes
Enclosed: No
Contiguous: Yes
Permitted: Yes
Wet space: No
Addition: No
Conversion: No

15 Floor 2 - Sunroom

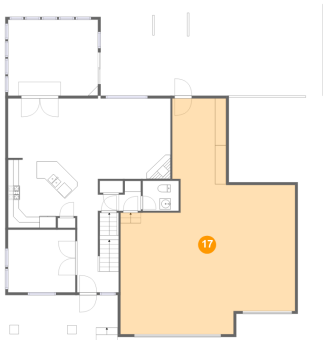
Dimensions: 16'4" x 13'10"
Area: 226 sq. ft
Counted as living area: Yes

Heated: Yes
Finished: Yes
Enclosed: Yes
Contiguous: Yes
Permitted: Yes
Wet space: No
Addition: No
Conversion: No

16 Floor 2 - Living Room

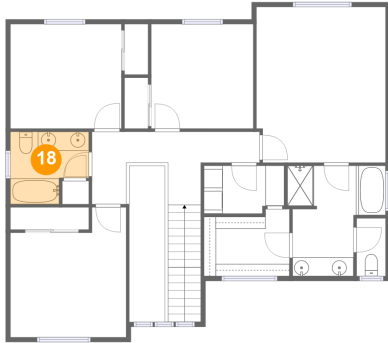
Dimensions: 13'2" x 14'7"
Area: 193 sq. ft
Counted as living area: Yes

Heated: Yes
Finished: Yes
Enclosed: Yes
Contiguous: Yes
Permitted: Yes
Wet space: No
Addition: No
Conversion: No

17 Floor 2 - Garage

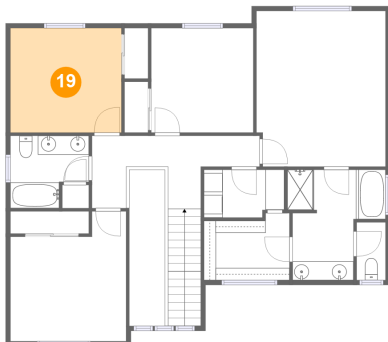
Dimensions: 31'9" x 42'10"
Area: 911 sq. ft
Counted as living area: No

Heated: No
Finished: No
Enclosed: Yes
Contiguous: Yes
Permitted: Yes
Wet space: No
Addition: No
Conversion: No

18 Floor 3 - Bath

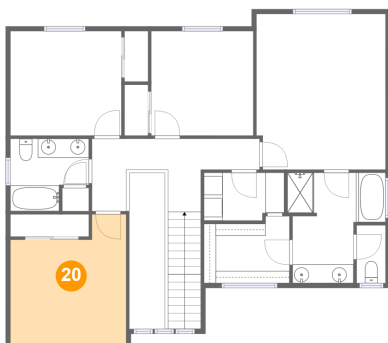
Dimensions: 8'3" x 7'8"
Area: 55 sq. ft
Counted as living area: Yes

Heated: Yes
Finished: Yes
Enclosed: Yes
Contiguous: Yes
Permitted: Yes
Wet space: Yes
Addition: No
Conversion: No

19 Floor 3 - Bedroom

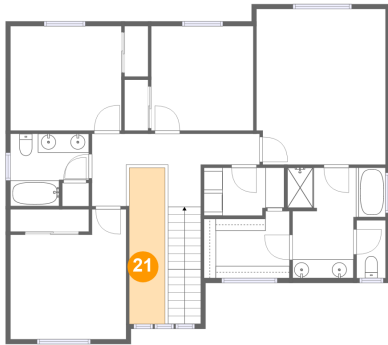
Dimensions: 11'9" x 11'0"
Area: 129 sq. ft
Counted as living area: Yes

Heated: Yes
Finished: Yes
Enclosed: Yes
Contiguous: Yes
Permitted: Yes
Wet space: No
Addition: No
Conversion: No

20 Floor 3 - Bedroom

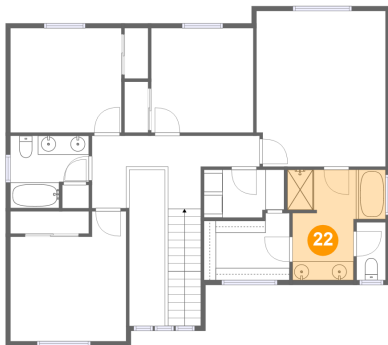
Dimensions: 12'2" x 13'9"
Area: 145 sq. ft
Counted as living area: Yes

Heated: Yes
Finished: Yes
Enclosed: Yes
Contiguous: Yes
Permitted: Yes
Wet space: No
Addition: No
Conversion: No

21 Floor 3 - Open To Below

Dimensions: 3'9" x 16'6"
Area: 62 sq. ft
Counted as living area: No

Heated: No
Finished: No
Enclosed: No
Contiguous: Yes
Permitted: No
Wet space: No
Addition: No
Conversion: No

22 Floor 3 - Primary Bath

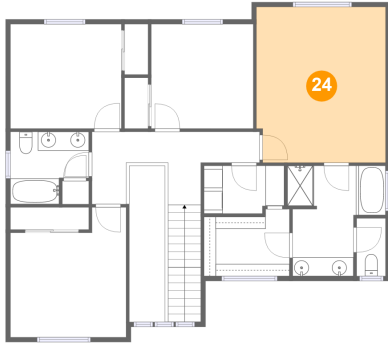
Dimensions: 10'5" x 11'8"
Area: 94 sq. ft
Counted as living area: Yes

Heated: Yes
Finished: Yes
Enclosed: Yes
Contiguous: Yes
Permitted: Yes
Wet space: Yes
Addition: No
Conversion: No

23 Floor 3 - Bedroom

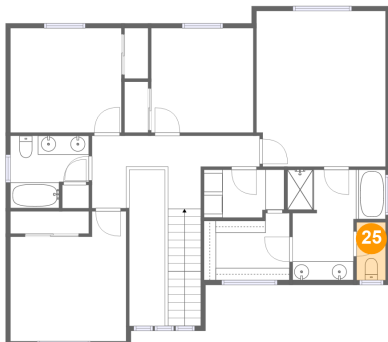
Dimensions: 10'9" x 11'0"
Area: 119 sq. ft
Counted as living area: Yes

Heated: Yes
Finished: Yes
Enclosed: Yes
Contiguous: Yes
Permitted: Yes
Wet space: No
Addition: No
Conversion: No

24 Floor 3 - Primary Bedroom

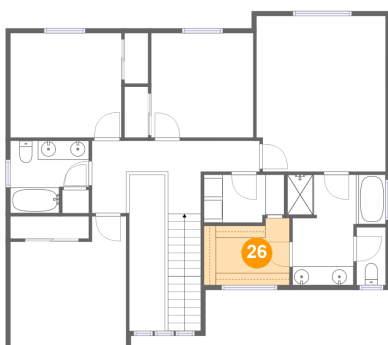
Dimensions: 13'7" x 16'5"
Area: 222 sq. ft
Counted as living area: Yes

Heated: Yes
Finished: Yes
Enclosed: Yes
Contiguous: Yes
Permitted: Yes
Wet space: No
Addition: No
Conversion: No

25 Floor 3 - WC

Dimensions: 3'1" x 6'1"
Area: 19 sq. ft
Counted as living area: Yes

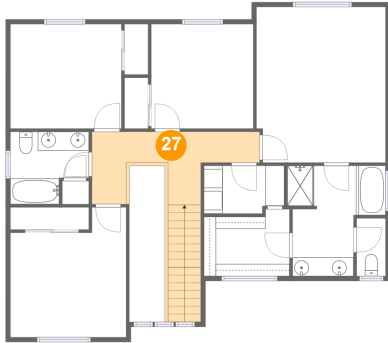
Heated: Yes
Finished: Yes
Enclosed: Yes
Contiguous: Yes
Permitted: Yes
Wet space: Yes
Addition: No
Conversion: No

26 Floor 3 - W.I.C.

Dimensions: 9'0" x 7'1"
Area: 59 sq. ft
Counted as living area: Yes

Heated: Yes
Finished: Yes
Enclosed: Yes
Contiguous: Yes
Permitted: Yes
Wet space: No
Addition: No
Conversion: No

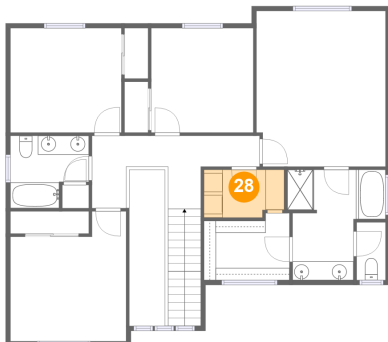
27 Floor 3 - Hall



Dimensions: 17'9" x 7'9"
Area: 140 sq. ft
Counted as living area: Yes

Heated: Yes
Finished: Yes
Enclosed: Yes
Contiguous: Yes
Permitted: Yes
Wet space: No
Addition: No
Conversion: No

28 Floor 3 - Laundry



Dimensions: 8'6" x 5'1"
Area: 42 sq. ft
Counted as living area: Yes

Heated: Yes
Finished: Yes
Enclosed: Yes
Contiguous: Yes
Permitted: Yes
Wet space: No
Addition: No
Conversion: No