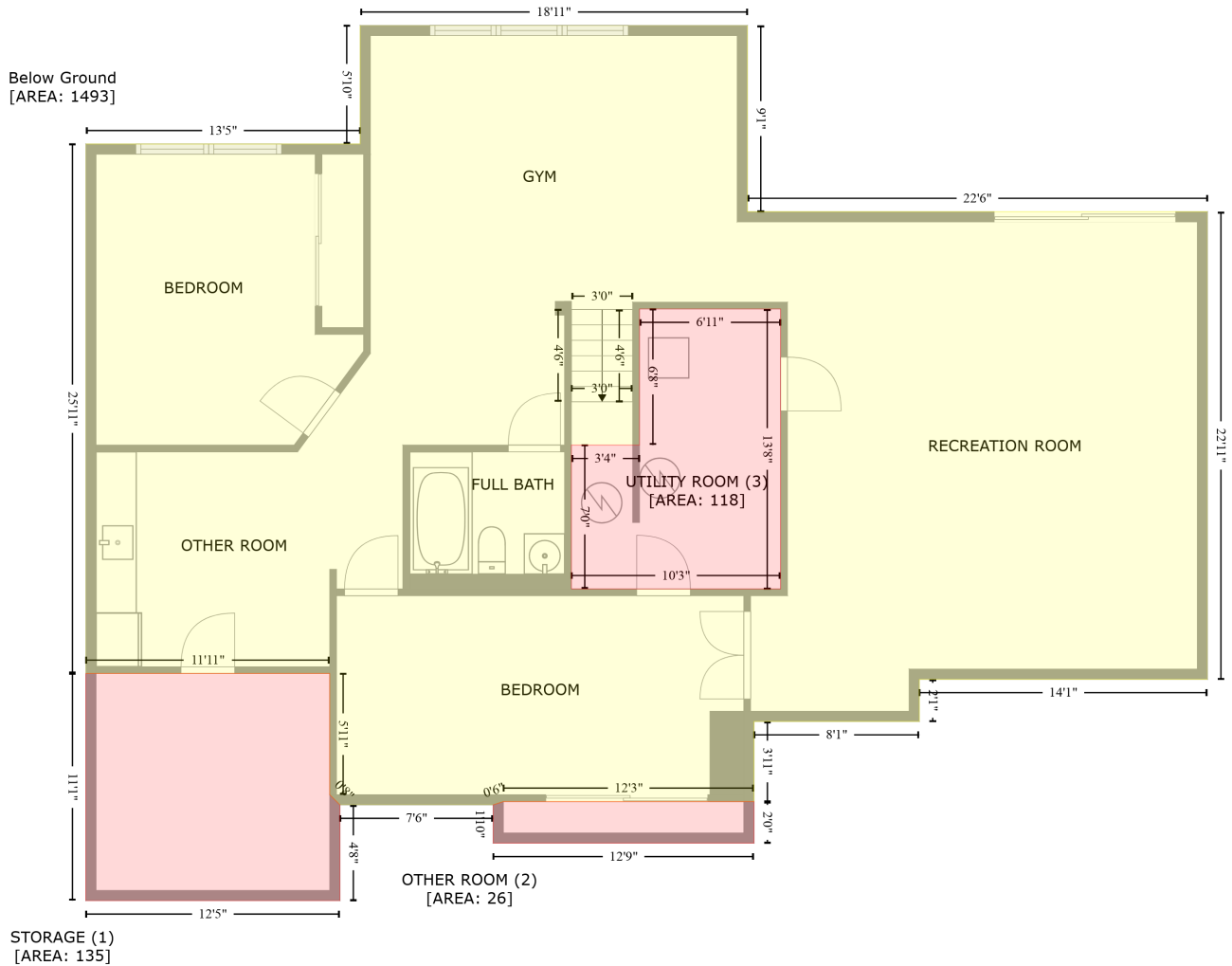


# 905 Malone Place, Louisville, Jefferson County, Kentucky, United States, 40245

Gross Living Area: 2727 sq. ft



Space	Area (sq. ft)	Calculation <small>Coordinate Polygon Area Algorithm using inches</small>
Below Ground (Living area)	1493	$-\left((409.4 + 409.4) * (3.6 - 113) + (409.4 + 679.5) * (113 - 113) + (679.5 + 679.5) * (113 - 387.6) + (679.5 + 510.3) * (387.6 - 387.6) + (510.3 + 510.3) * (387.6 - 412.3) + (510.3 + 413.2) * (412.3 - 412.3) + (413.2 + 413.2) * (412.3 - 459.4) + (413.2 + 266.1) * (459.4 - 459.4) + (266.1 + 260.1) * (459.4 - 461.4) + (260.1 + 170.2) * (461.4 - 461.4) + (170.2 + 164.2) * (461.4 - 455.4) + (164.2 + 164.2) * (455.4 - 384.2) + (164.2 + 21) * (384.2 - 384.2) + (21 + 21) * (384.2 - 73.2) + (21 + 182) * (73.2 - 73.2) + (182 + 182) * (73.2 - 3.6) + (182 + 409.4) * (3.6 - 3.6) * 0.5 * 0.00694 + -((428.9 + 346) * (170.1 - 170.1) + (346 + 346) * (170.1 - 250) + (346 + 306) * (250 - 250) + (306 + 306) * (250 - 334.5) + (306 + 428.9) * (334.5 - 334.5) + (428.9 + 428.9) * (334.5 - 170.1)) * 0.5 * 0.00694$
STORAGE (Non-living area)	135	$-\left((164.2 + 164.2) * (384.2 - 455.4) + (164.2 + 170.2) * (455.4 - 461.4) + (170.2 + 170.2) * (461.4 - 517.6) + (170.2 + 21) * (517.6 - 517.6) + (21 + 21) * (517.6 - 384.2) + (21 + 164.2) * (384.2 - 384.2) * 0.5 * 0.00694$
OTHER ROOM	26	$-\left((413.2 + 413.2) * (459.4 - 483.8) + (413.2 + 260.1) * (483.8 - 483.8) + (260.1 + 260.1) * (483.8 -$

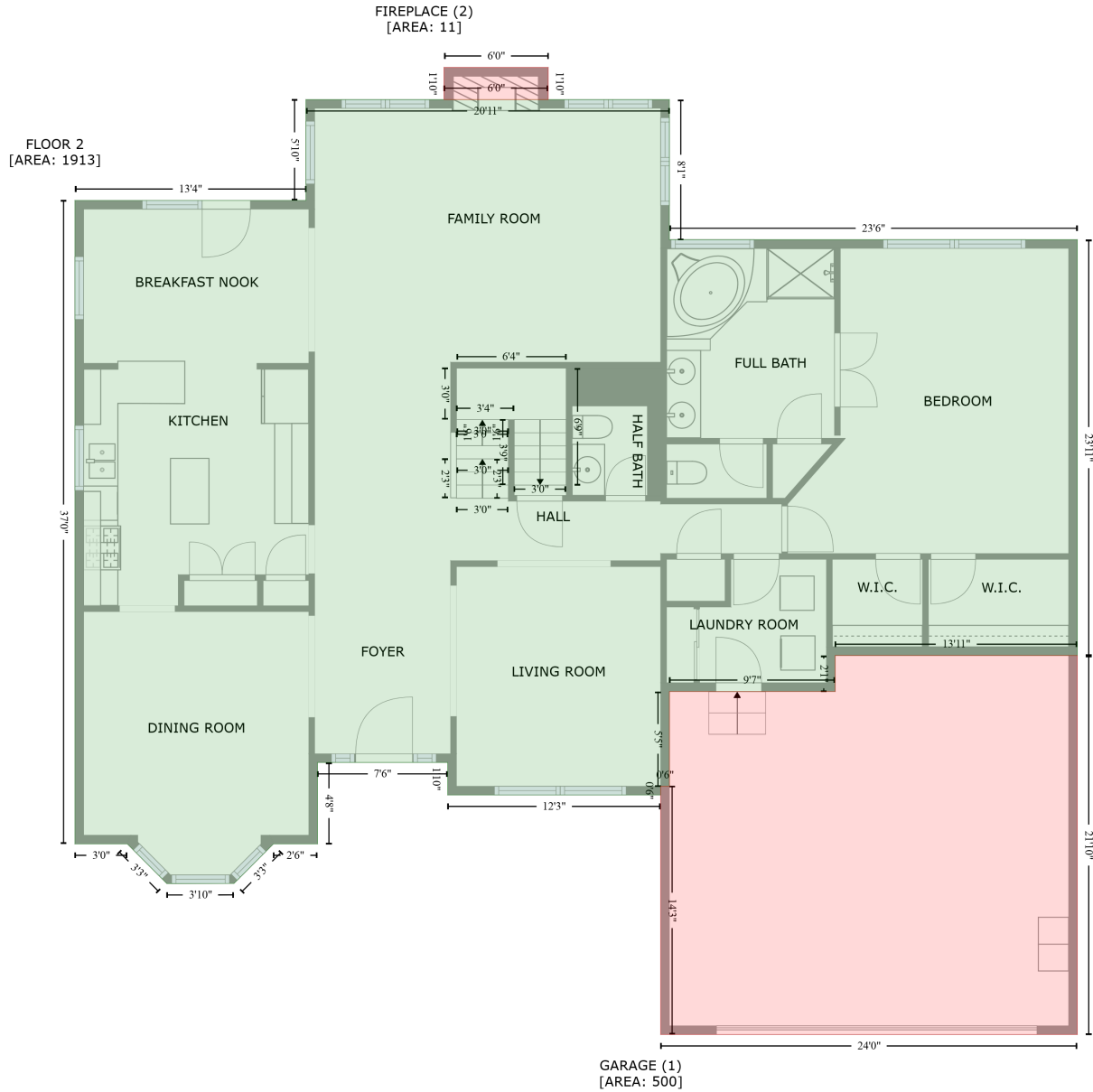
# 905 Malone Place, Louisville, Jefferson County, Kentucky, United States, 40245

Gross Living Area: 2727 sq. ft

Space	Area (sq. ft)	Calculation <small>Coordinate Polygon Area Algorithm using inches</small>
(Non-living area)		$461.4 + (260.1 + 266.1) * (461.4 - 459.4) + (266.1 + 413.2) * (459.4 - 459.4) * 0.5 * 0.00694$
UTILITY ROOM (Non-living area)	118	$-((428.9 + 428.9) * (170.1 - 334.5) + (428.9 + 306) * (334.5 - 334.5) + (306 + 306) * (334.5 - 250) + (306 + 346) * (250 - 250) + (346 + 346) * (250 - 170.1) + (346 + 428.9) * (170.1 - 170.1)) * 0.5 * 0.00694$

# 905 Malone Place, Louisville, Jefferson County, Kentucky, United States, 40245

Gross Living Area: 2727 sq. ft



Space	Area (sq. ft)	Calculation <small>Coordinate Polygon Area Algorithm using inches</small>
FLOOR 2 (Living area)	1913	$  \begin{aligned}  & -((413.2 + 413.2) * (3.6 - 100.3) + (413.2 + 695.1) * (100.3 - 100.3) + (695.1 + 695.1) * (100.3 - 387.6) \\  & + (695.1 + 527.8) * (387.6 - 387.6) + (527.8 + 527.8) * (387.6 - 412.3) + (527.8 + 413.2) * \\  & (412.3 - 412.3) + (413.2 + 413.2) * (412.3 - 477.8) + (413.2 + 407.2) * (477.8 - 477.8) + (407.2 + \\  & 407.2) * (477.8 - 483.8) + (407.2 + 260.1) * (483.8 - 483.8) + (260.1 + 260.1) * (483.8 - 461.4) + \\  & (260.1 + 170.2) * (461.4 - 461.4) + (170.2 + 170.2) * (461.4 - 517.6) + (170.2 + 139.7) * (517.6 - \\  & 517.6) + (139.7 + 112.4) * (517.6 - 544.9) + (112.4 + 66.1) * (544.9 - 545) + (66.1 + 38.7) * (545 - \\  & 517.6) + (38.7 + 2.6) * (517.6 - 517.6) + (2.6 + 2.6) * (517.6 - 73.2) + (2.6 + 162.2) * (73.2 - 73.2)  \end{aligned}  $

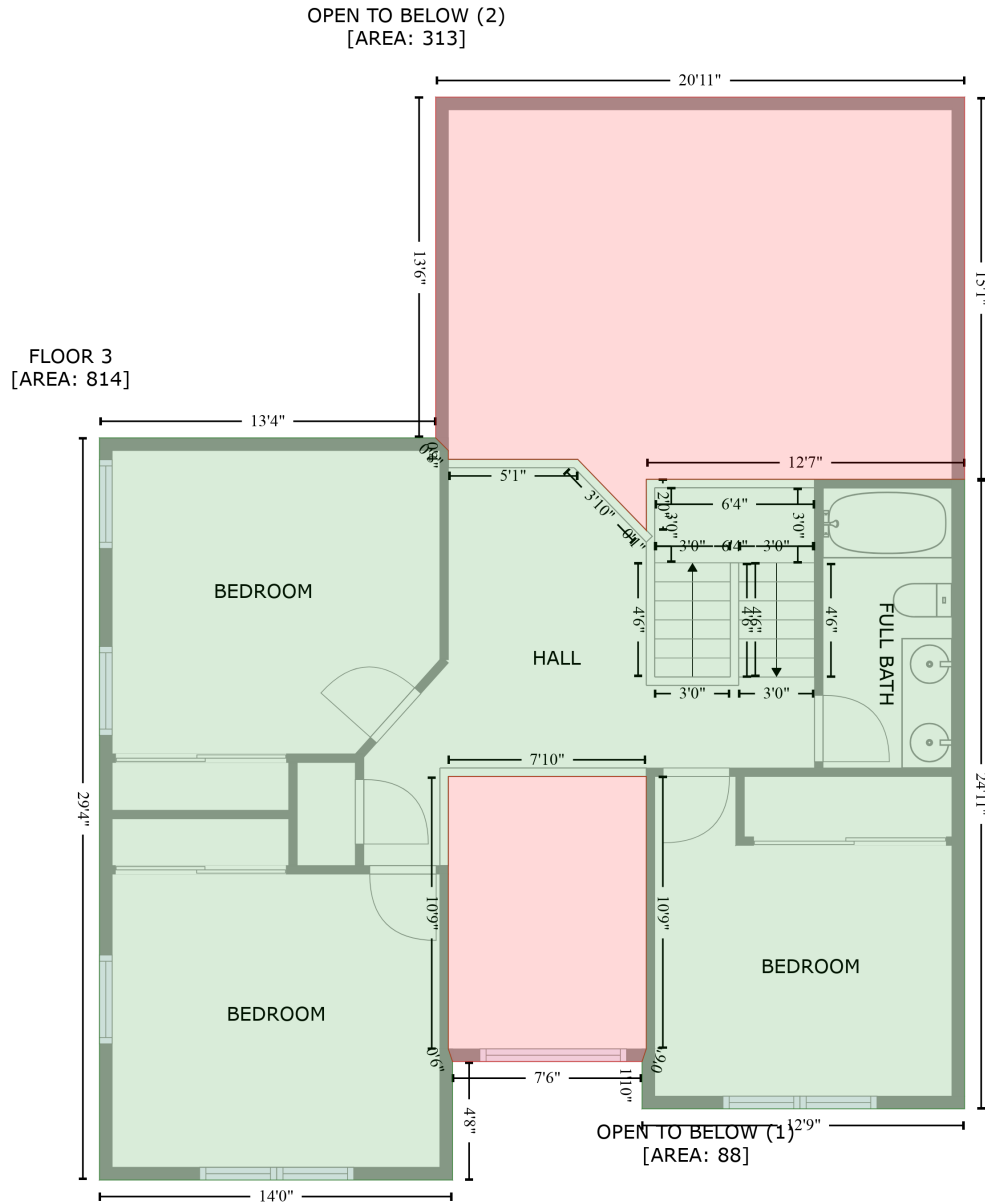
# 905 Malone Place, Louisville, Jefferson County, Kentucky, United States, 40245

Gross Living Area: 2727 sq. ft

Space	Area (sq. ft)	Calculation <small>Coordinate Polygon Area Algorithm using inches</small>
GARAGE (Non-living area)	500	$\begin{aligned} &+ (162.2 + 162.2) * (73.2 - 3.6) + (162.2 + 413.2) * (3.6 - 3.6) * 0.5 * 0.00694 \\ &-((695.1 + 695.1) * (387.6 - 649.3) + (695.1 + 407.2) * (649.3 - 649.3) + (407.2 + 407.2) * (649.3 - \\ &477.8) + (407.2 + 413.2) * (477.8 - 477.8) + (413.2 + 413.2) * (477.8 - 412.3) + (413.2 + 527.8) * \\ &(412.3 - 412.3) + (527.8 + 527.8) * (412.3 - 387.6) + (527.8 + 695.1) * (387.6 - 387.6)) * 0.5 * \\ &0.00694 \end{aligned}$
FIREPLACE (Non-living area)	11	$\begin{aligned} &-((329.5 + 329.5) * (-18.7 - 3.6) + (329.5 + 257.5) * (3.6 - 3.6) + (257.5 + 257.5) * (3.6 - -18.7) + \\ &(257.5 + 329.5) * (-18.7 - -18.7)) * 0.5 * 0.00694 \end{aligned}$

# 905 Malone Place, Louisville, Jefferson County, Kentucky, United States, 40245

Gross Living Area: 2727 sq. ft



Space	Area (sq. ft)	Calculation <small>Coordinate Polygon Area Algorithm using inches</small>
FLOOR 3 (Living area)	814	$  \begin{aligned}  & -((162.2 + 168.2) * (165.3 - 171.3) + (168.2 + 168.2) * (171.3 - 175.5) + (168.2 + 229.6) * (175.5 - \\  & 175.5) + (229.6 + 261.7) * (175.5 - 208.8) + (261.7 + 262.2) * (208.8 - 209.4) + (262.2 + 262.1) * \\  & (209.4 - 185) + (262.1 + 413.2) * (185 - 185) + (413.2 + 413.2) * (185 - 483.8) + (413.2 + 260.1) * \\  & (483.8 - 483.8) + (260.1 + 260.1) * (483.8 - 461.4) + (260.1 + 262.1) * (461.4 - 455.4) + (262.1 + \\  & 262.1) * (455.4 - 326) + (262.1 + 168.2) * (326 - 326) + (168.2 + 168.2) * (326 - 455.4) + (168.2 + \\  & 170.2) * (455.4 - 461.4) + (170.2 + 170.2) * (461.4 - 517.6) + (170.2 + 2.6) * (517.6 - 517.6) + (2.6 \\  & + 2.6) * (517.6 - 165.3) + (2.6 + 162.2) * (165.3 - 165.3)) * 0.5 * 0.00694  \end{aligned}  $

# 905 Malone Place, Louisville, Jefferson County, Kentucky, United States, 40245

Gross Living Area: 2727 sq. ft

Space	Area (sq. ft)	Calculation <small>Coordinate Polygon Area Algorithm using inches</small>
OPEN TO BELOW (Non-living area)	88	$-\left((262.1 + 262.1) * (326 - 455.4) + (262.1 + 260.1) * (455.4 - 461.4) + (260.1 + 170.2) * (461.4 - 461.4) + (170.2 + 168.2) * (461.4 - 455.4) + (168.2 + 168.2) * (455.4 - 326) + (168.2 + 262.1) * (326 - 326)\right) * 0.5 * 0.00694$
OPEN TO BELOW (Non-living area)	313	$-\left((413.2 + 413.2) * (3.6 - 185) + (413.2 + 262.1) * (185 - 185) + (262.1 + 262.2) * (185 - 209.4) + (262.2 + 261.7) * (209.4 - 208.8) + (261.7 + 229.6) * (208.8 - 175.5) + (229.6 + 168.2) * (175.5 - 175.5) + (168.2 + 168.2) * (175.5 - 171.3) + (168.2 + 162.2) * (171.3 - 165.3) + (162.2 + 162.2) * (165.3 - 3.6) + (162.2 + 413.2) * (3.6 - 3.6)\right) * 0.5 * 0.00694$