



Home report

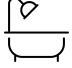
16 Reeds Lane, Woodcliff Lake, Bergen County, New Jersey,
United States, 07677




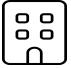
Property summary


**0**
Garages


**6**
Bedrooms

**3**
Bathrooms

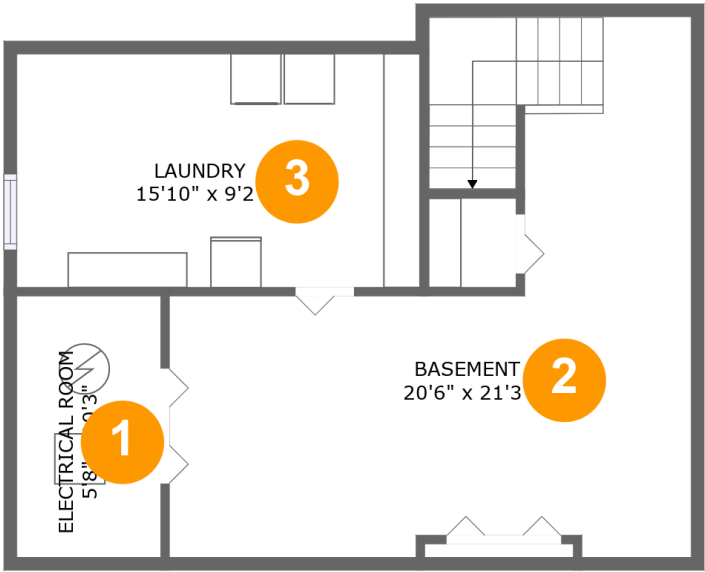
**0**
Half baths

**3**
Floors

**3,487**
Gross living
area sqft

**4,751**
Total sqft

16 Reeds Lane, Woodcliff Lake, Bergen County, New Jersey,
United States, 07677



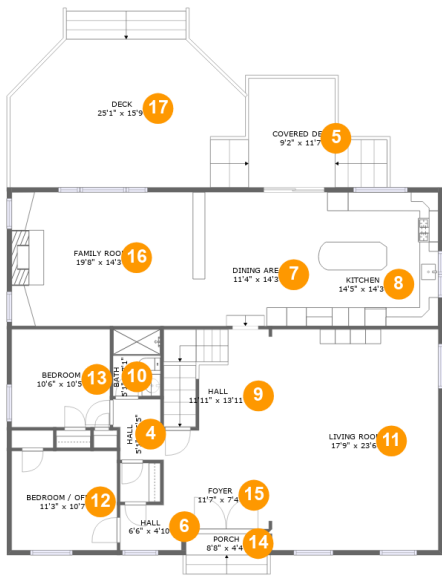
Room dimensions

Floor 1 Total sqft: 590 Living area: 0

#		Dimensions	sqft	Counted as living area
1	Electrical Room	5'8" x 10'3"	58 sq. ft	No
2	Basement	20'6" x 21'3"	302 sq. ft	No
3	Laundry	15'10" x 9'2"	146 sq. ft	No

Home report

16 Reeds Lane, Woodcliff Lake, Bergen County, New Jersey,
United States, 07677



Room dimensions

Floor 2 Total sqft: 2364 Living area: 1796

#		Dimensions	sqft	Counted as living area
4	Hall	5'1" x 6'5"	30 sq. ft	Yes
5	Covered Deck	9'2" x 11'7"	156 sq. ft	No
6	Hall	6'6" x 4'10"	31 sq. ft	Yes
7	Dining Area	11'4" x 14'3"	161 sq. ft	Yes
8	Kitchen	14'5" x 14'3"	205 sq. ft	Yes
9	Hall	11'11" x 13'11"	158 sq. ft	Yes
10	Bath	5'1" x 7'1"	36 sq. ft	Yes
11	Living Room	17'9" x 23'6"	417 sq. ft	Yes
12	Bedroom / Office	11'3" x 10'7"	119 sq. ft	Yes
13	Bedroom	10'6" x 10'5"	109 sq. ft	Yes
14	Porch	8'8" x 4'4"	37 sq. ft	No

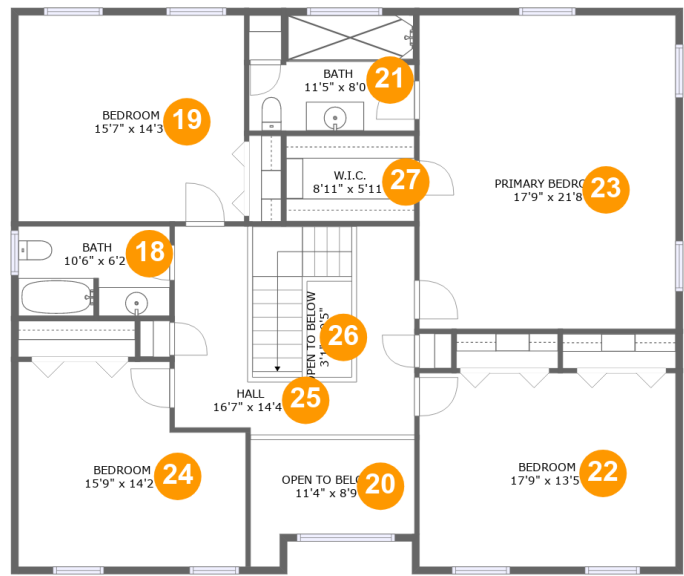
Home report

16 Reeds Lane, Woodcliff Lake, Bergen County, New Jersey,
United States, 07677

#		Dimensions	sqft	Counted as living area
15	Foyer	11'7" x 7'4"	80 sq. ft	Yes
16	Family Room	19'8" x 14'3"	281 sq. ft	Yes
17	Deck	25'1" x 15'9"	375 sq. ft	No

Home report

16 Reeds Lane, Woodcliff Lake, Bergen County, New Jersey,
United States, 07677



Room dimensions

Floor 3 Total sqft: 1797 Living area: 1691

#		Dimensions	sqft	Counted as living area
18	Bath	10'6" x 6'2"	64 sq. ft	Yes
19	Bedroom	15'7" x 14'3"	223 sq. ft	Yes
20	Open To Below	11'4" x 8'9"	79 sq. ft	No
21	Bath	11'5" x 8'0"	82 sq. ft	Yes
22	Bedroom	17'9" x 13'5"	237 sq. ft	Yes
23	Primary Bedroom	17'9" x 21'8"	384 sq. ft	Yes
24	Bedroom	15'9" x 14'2"	197 sq. ft	Yes
25	Hall	16'7" x 14'4"	240 sq. ft	No
26	Open To Below	3'1" x 0'5"	21 sq. ft	No
27	W.I.C.	8'11" x 5'11"	53 sq. ft	Yes

16 Reeds Lane, Woodcliff Lake, Bergen County, New Jersey,
United States, 07677

1 Floor 1 - Electrical Room



Dimensions: 5'8" x 10'3"
Area: 58 sq. ft
Counted as living area: No

Heated: No
Finished: No
Enclosed: Yes
Contiguous: Yes
Permitted: Yes
Wet space: No
Addition: No
Conversion: No

2 Floor 1 - Basement



Dimensions: 20'6" x 21'3"
Area: 302 sq. ft
Counted as living area: No

Heated: Yes
Finished: No
Enclosed: Yes
Contiguous: Yes
Permitted: Yes
Wet space: No
Addition: No
Conversion: No

Home report

16 Reeds Lane, Woodcliff Lake, Bergen County, New Jersey,
United States, 07677

3 Floor 1 - Laundry



Dimensions: 15'10" x 9'2"
Area: 146 sq. ft
Counted as living area: No

Heated: Yes
Finished: Yes
Enclosed: Yes
Contiguous: No
Permitted: Yes
Wet space: No
Addition: No
Conversion: No

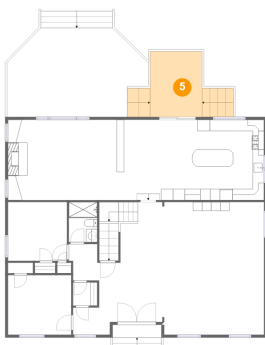
4 Floor 2 - Hall



Dimensions: 5'1" x 6'5"
Area: 30 sq. ft
Counted as living area: Yes

Heated: Yes
Finished: Yes
Enclosed: Yes
Contiguous: Yes
Permitted: Yes
Wet space: No
Addition: No
Conversion: No

5 Floor 2 - Covered Deck



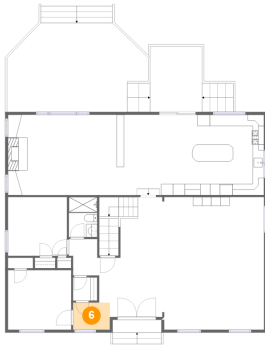
Dimensions: 9'2" x 11'7"
Area: 156 sq. ft
Counted as living area: No

Heated: No
Finished: Yes
Enclosed: No
Contiguous: Yes
Permitted: Yes
Wet space: No
Addition: No
Conversion: No

Home report

16 Reeds Lane, Woodcliff Lake, Bergen County, New Jersey,
United States, 07677

6 Floor 2 - Hall



Dimensions: 6'6" x 4'10"
Area: 31 sq. ft
Counted as living area: Yes

Heated: Yes
Finished: Yes
Enclosed: Yes
Contiguous: Yes
Permitted: Yes
Wet space: No
Addition: No
Conversion: No

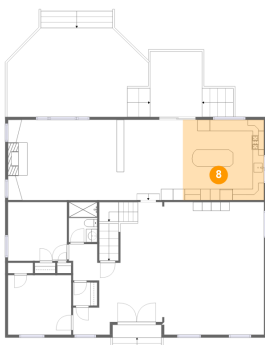
7 Floor 2 - Dining Area



Dimensions: 11'4" x 14'3"
Area: 161 sq. ft
Counted as living area: Yes

Heated: Yes
Finished: Yes
Enclosed: Yes
Contiguous: Yes
Permitted: Yes
Wet space: No
Addition: No
Conversion: No

8 Floor 2 - Kitchen

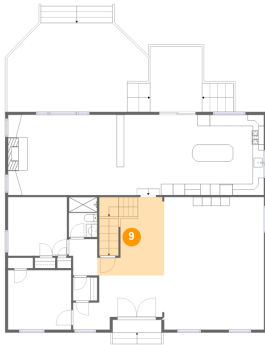


Dimensions: 14'5" x 14'3"
Area: 205 sq. ft
Counted as living area: Yes

Heated: Yes
Finished: Yes
Enclosed: Yes
Contiguous: Yes
Permitted: Yes
Wet space: No
Addition: No
Conversion: No

16 Reeds Lane, Woodcliff Lake, Bergen County, New Jersey,
United States, 07677

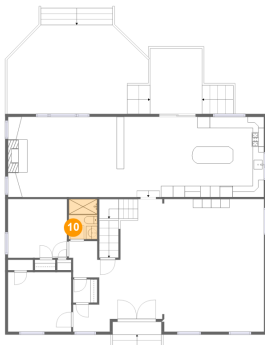
9 Floor 2 - Hall



Dimensions: 11'11" x 13'11"
Area: 158 sq. ft
Counted as living area: Yes

Heated: Yes
Finished: Yes
Enclosed: Yes
Contiguous: Yes
Permitted: Yes
Wet space: No
Addition: No
Conversion: No

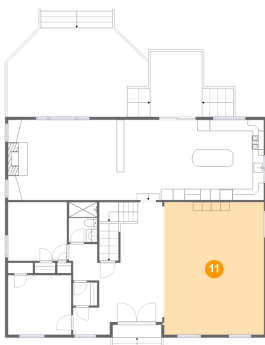
10 Floor 2 - Bath



Dimensions: 5'1" x 7'1"
Area: 36 sq. ft
Counted as living area: Yes

Heated: Yes
Finished: Yes
Enclosed: Yes
Contiguous: Yes
Permitted: Yes
Wet space: Yes
Addition: No
Conversion: No

11 Floor 2 - Living Room



Dimensions: 17'9" x 23'6"
Area: 417 sq. ft
Counted as living area: Yes

Heated: Yes
Finished: Yes
Enclosed: Yes
Contiguous: Yes
Permitted: Yes
Wet space: No
Addition: No
Conversion: No

Home report

16 Reeds Lane, Woodcliff Lake, Bergen County, New Jersey,
United States, 07677

12 Floor 2 - Bedroom / Office



Dimensions: 11'3" x 10'7"
Area: 119 sq. ft
Counted as living area: Yes

Heated: Yes
Finished: Yes
Enclosed: Yes
Contiguous: Yes
Permitted: Yes
Wet space: No
Addition: No
Conversion: No

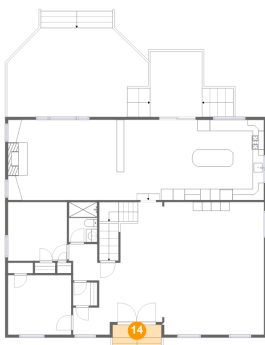
13 Floor 2 - Bedroom



Dimensions: 10'6" x 10'5"
Area: 109 sq. ft
Counted as living area: Yes

Heated: Yes
Finished: Yes
Enclosed: Yes
Contiguous: Yes
Permitted: Yes
Wet space: No
Addition: No
Conversion: No

14 Floor 2 - Porch



Dimensions: 8'8" x 4'4"
Area: 37 sq. ft
Counted as living area: No

Heated: No
Finished: Yes
Enclosed: No
Contiguous: Yes
Permitted: Yes
Wet space: No
Addition: No
Conversion: No

Home report

16 Reeds Lane, Woodcliff Lake, Bergen County, New Jersey,
United States, 07677

15 Floor 2 - Foyer



Dimensions: 11'7" x 7'4"
Area: 80 sq. ft
Counted as living area: Yes

Heated: Yes
Finished: Yes
Enclosed: Yes
Contiguous: Yes
Permitted: Yes
Wet space: No
Addition: No
Conversion: No

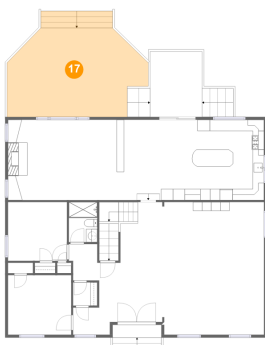
16 Floor 2 - Family Room



Dimensions: 19'8" x 14'3"
Area: 281 sq. ft
Counted as living area: Yes

Heated: Yes
Finished: Yes
Enclosed: Yes
Contiguous: Yes
Permitted: Yes
Wet space: No
Addition: No
Conversion: No

17 Floor 2 - Deck

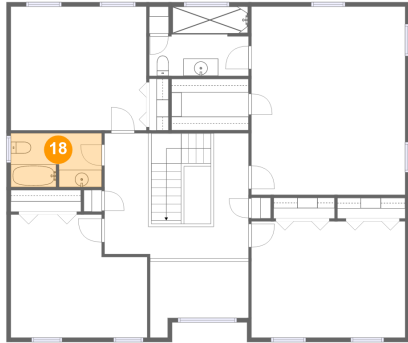


Dimensions: 25'1" x 15'9"
Area: 375 sq. ft
Counted as living area: No

Heated: No
Finished: Yes
Enclosed: No
Contiguous: Yes
Permitted: Yes
Wet space: No
Addition: No
Conversion: No

16 Reeds Lane, Woodcliff Lake, Bergen County, New Jersey,
United States, 07677

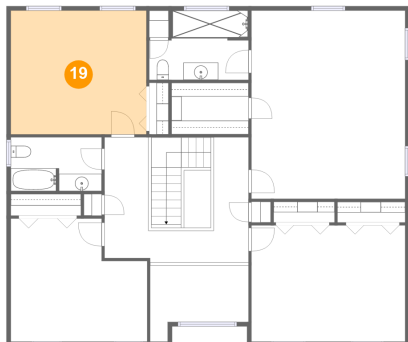
18 Floor 3 - Bath



Dimensions: 10'6" x 6'2"
Area: 64 sq. ft
Counted as living area: Yes

Heated: Yes
Finished: Yes
Enclosed: Yes
Contiguous: Yes
Permitted: Yes
Wet space: Yes
Addition: No
Conversion: No

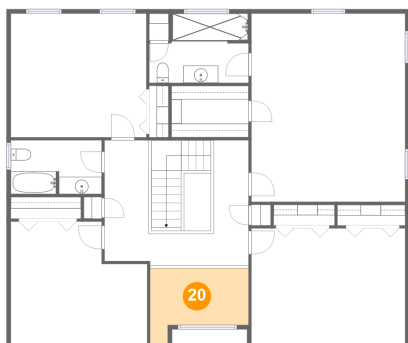
19 Floor 3 - Bedroom



Dimensions: 15'7" x 14'3"
Area: 223 sq. ft
Counted as living area: Yes

Heated: Yes
Finished: Yes
Enclosed: Yes
Contiguous: Yes
Permitted: Yes
Wet space: No
Addition: No
Conversion: No

20 Floor 3 - Open To Below

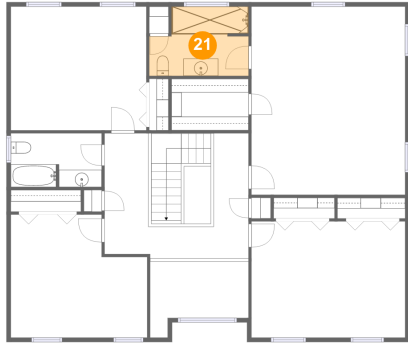


Dimensions: 11'4" x 8'9"
Area: 79 sq. ft
Counted as living area: No

Heated: No
Finished: No
Enclosed: No
Contiguous: Yes
Permitted: No
Wet space: No
Addition: No
Conversion: No

16 Reeds Lane, Woodcliff Lake, Bergen County, New Jersey,
United States, 07677

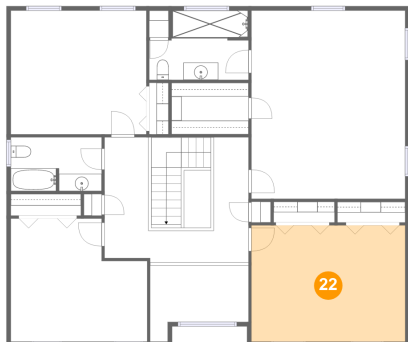
21 Floor 3 - Bath



Dimensions: 11'5" x 8'0"
Area: 82 sq. ft
Counted as living area: Yes

Heated: Yes
Finished: Yes
Enclosed: Yes
Contiguous: Yes
Permitted: Yes
Wet space: Yes
Addition: No
Conversion: No

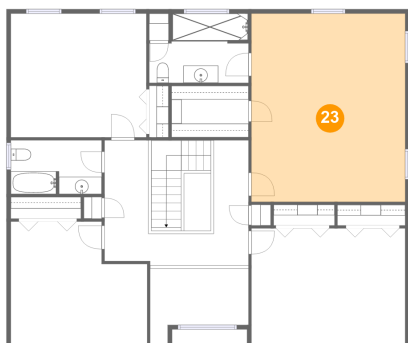
22 Floor 3 - Bedroom



Dimensions: 17'9" x 13'5"
Area: 237 sq. ft
Counted as living area: Yes

Heated: Yes
Finished: Yes
Enclosed: Yes
Contiguous: Yes
Permitted: Yes
Wet space: No
Addition: No
Conversion: No

23 Floor 3 - Primary Bedroom



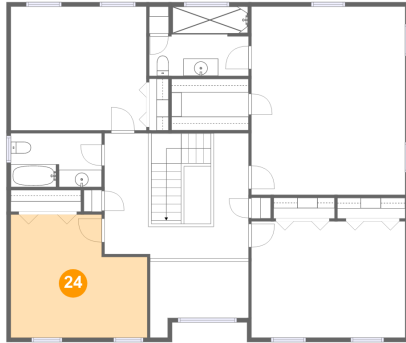
Dimensions: 17'9" x 21'8"
Area: 384 sq. ft
Counted as living area: Yes

Heated: Yes
Finished: Yes
Enclosed: Yes
Contiguous: Yes
Permitted: Yes
Wet space: No
Addition: No
Conversion: No

Home report

16 Reeds Lane, Woodcliff Lake, Bergen County, New Jersey,
United States, 07677

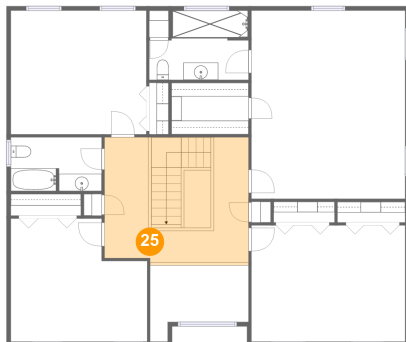
24 Floor 3 - Bedroom



Dimensions: 15'9" x 14'2"
Area: 197 sq. ft
Counted as living area: Yes

Heated: Yes
Finished: Yes
Enclosed: Yes
Contiguous: Yes
Permitted: Yes
Wet space: No
Addition: No
Conversion: No

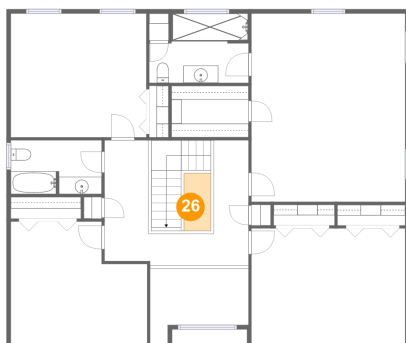
25 Floor 3 - Hall



Dimensions: 16'7" x 14'4"
Area: 240 sq. ft
Counted as living area: No

Heated: Yes
Finished: Yes
Enclosed: Yes
Contiguous: Yes
Permitted: Yes
Wet space: No
Addition: No
Conversion: No

26 Floor 3 - Open To Below

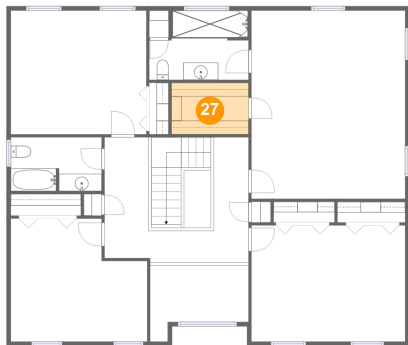


Dimensions: 3'1" x 0'5"
Area: 21 sq. ft
Counted as living area: No

Heated: No
Finished: No
Enclosed: No
Contiguous: Yes
Permitted: No
Wet space: No
Addition: No
Conversion: No

16 Reeds Lane, Woodcliff Lake, Bergen County, New Jersey,
United States, 07677

27 Floor 3 - W.I.C.



Dimensions: 8'11" x 5'11"
Area: 53 sq. ft
Counted as living area: Yes

Heated: Yes
Finished: Yes
Enclosed: Yes
Contiguous: Yes
Permitted: Yes
Wet space: No
Addition: No
Conversion: No