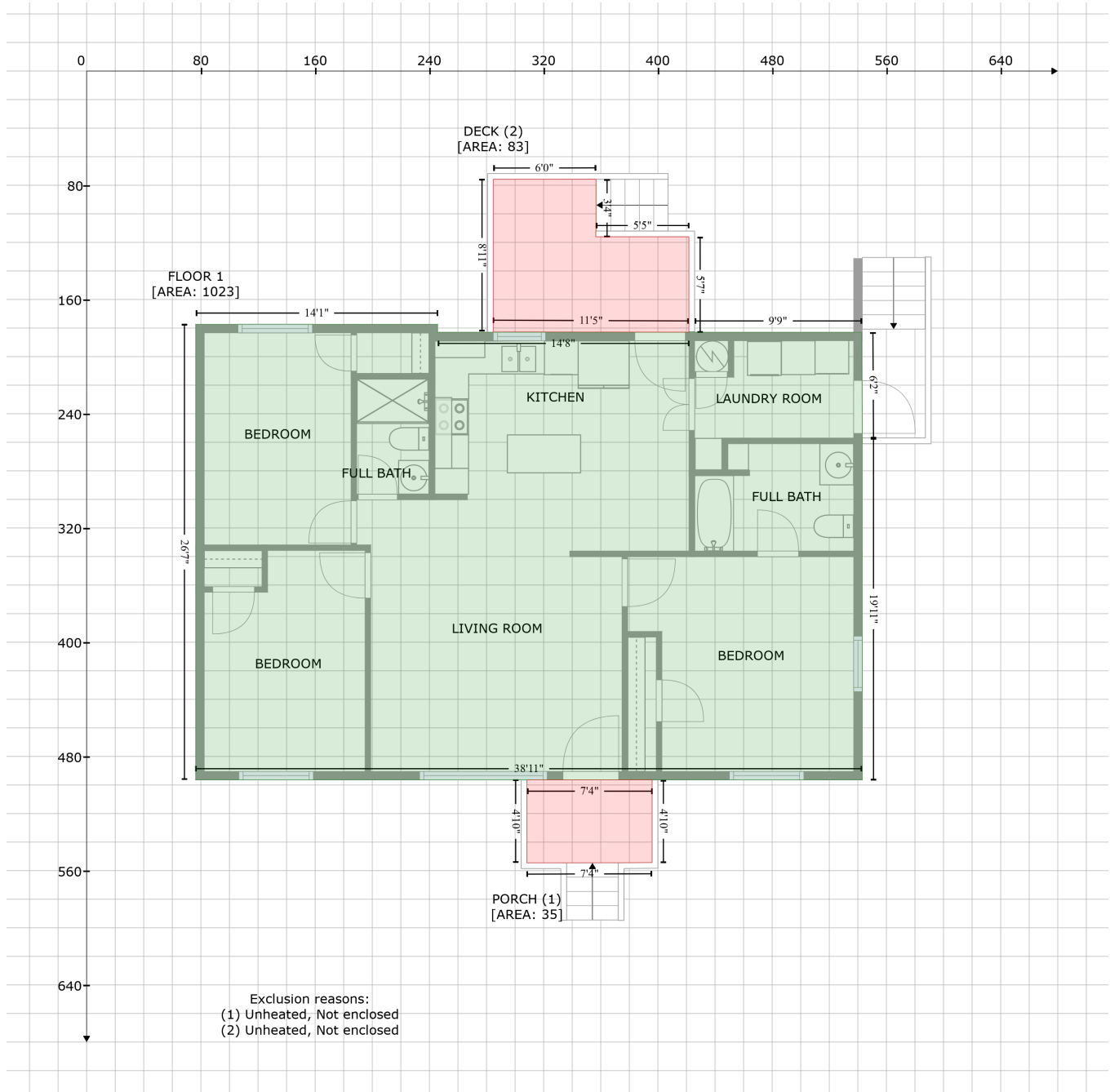


10200 Freewoods Rd, Myrtle Beach, South Carolina, United States

Gross Living Area: 1023 sq. ft



Space	Area (sq. ft)	Calculation <small>Coordinate Polygon Area Algorithm using inches</small>
FLOOR 1 (Living area)	1023	$-((245.8 + 245.8) * (177.4 - 182.9) + (245.8 + 421.7) * (182.9 - 182.9) + (421.7 + 421.7) * (182.9 - 182.6) + (421.7 + 425.7) * (182.6 - 182.6) + (425.7 + 425.7) * (182.6 - 182.9) + (425.7 + 542.7) * (182.9 - 182.9) + (542.7 + 543.1) * (182.9 - 257) + (543.1 + 543.1) * (257 - 496.5) + (543.1 + 76.4) * (496.5 - 496.5) + (76.4 + 76.4) * (496.5 - 177.4) + (76.4 + 245.8) * (177.4 - 177.4)) * 0.5 * 0.00694$
PORCH	35	$-((396 + 396) * (496.5 - 554.3) + (396 + 308.3) * (554.3 - 554.5) + (308.3 + 308.3) * (554.5 -$

10200 Freewoods Rd, Myrtle Beach, South Carolina, United States

Gross Living Area: 1023 sq. ft

Space	Area (sq. ft)	Calculation <small>Coordinate Polygon Area Algorithm using inches</small>
(Non-living area)		$496.5 + (308.3 + 396) * (496.5 - 496.5) * 0.5 * 0.00694$
DECK	83	$-((356.5 + 356.5) * (75.7 - 116.1) + (356.5 + 421.7) * (116.1 - 116.1) + (421.7 + 421.7) * (116.1 - 182.9) + (421.7 + 284.7) * (182.9 - 182.4) + (284.7 + 284.7) * (182.4 - 75.8) + (284.7 + 356.5) * (75.8 - 75.7)) * 0.5 * 0.00694$
(Non-living area)		