



Home report


25 Morningside Drive, Livingston, Essex County, New Jersey,  
United States, 07039




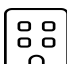
Property summary


**1** Garages


**4** Bedrooms

**3** Bathrooms

**1** Half baths

**3** Floors

**3,801** Gross living area sqft

**5,080** Total sqft

Home report

25 Morningside Drive, Livingston, Essex County, New Jersey,  
United States, 07039



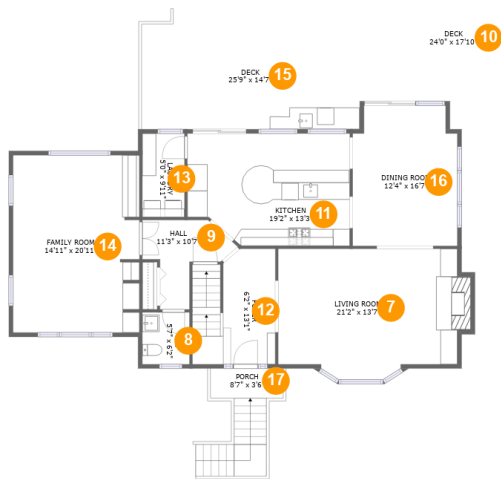
Room dimensions

Floor 1 Total sqft: 1314    Living area: 828

| # |                 | Dimensions    | sqft       | Counted as living area |
|---|-----------------|---------------|------------|------------------------|
| 1 | Utility         | 12'7" x 13'6" | 161 sq. ft | Yes                    |
| 2 | Recreation Room | 18'5" x 24'0" | 430 sq. ft | Yes                    |
| 3 | Garage          | 20'8" x 24'8" | 443 sq. ft | No                     |
| 4 | Gym             | 7'6" x 10'2"  | 77 sq. ft  | Yes                    |
| 5 | Bath            | 4'8" x 6'8"   | 31 sq. ft  | Yes                    |
| 6 | Hall            | 4'8" x 3'2"   | 15 sq. ft  | Yes                    |

Home report

25 Morningside Drive, Livingston, Essex County, New Jersey,  
United States, 07039



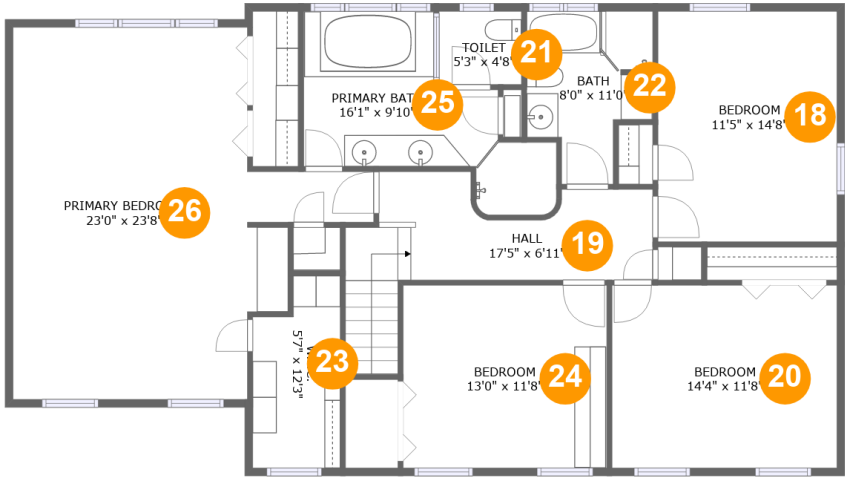
Room dimensions

Floor 2 Total sqft: 2241 Living area: 1448

| #  |             | Dimensions      | sqft       | Counted as living area |
|----|-------------|-----------------|------------|------------------------|
| 7  | Living Room | 21'2" x 13'7"   | 298 sq. ft | Yes                    |
| 8  | P/R         | 5'7" x 6'2"     | 34 sq. ft  | Yes                    |
| 9  | Hall        | 11'3" x 10'7"   | 67 sq. ft  | Yes                    |
| 10 | Deck        | 24'0" x 17'10"  | 354 sq. ft | No                     |
| 11 | Kitchen     | 19'2" x 13'3"   | 240 sq. ft | Yes                    |
| 12 | Foyer       | 6'2" x 13'1"    | 123 sq. ft | Yes                    |
| 13 | Laundry     | 5'0" x 9'11"    | 49 sq. ft  | Yes                    |
| 14 | Family Room | 14'11" x 20'11" | 310 sq. ft | Yes                    |
| 15 | Deck        | 25'9" x 14'7"   | 331 sq. ft | No                     |
| 16 | Dining Room | 12'4" x 16'7"   | 196 sq. ft | Yes                    |
| 17 | Porch       | 8'7" x 3'6"     | 82 sq. ft  | No                     |

Home report

25 Morningside Drive, Livingston, Essex County, New Jersey,  
United States, 07039



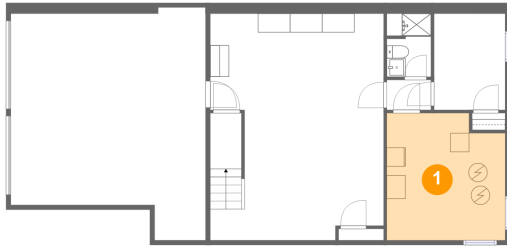
Room dimensions

Floor 3 Total sqft: 1525    Living area: 1525

| #  |                 | Dimensions    | sqft       | Counted as living area |
|----|-----------------|---------------|------------|------------------------|
| 18 | Bedroom         | 11'5" x 14'8" | 167 sq. ft | Yes                    |
| 19 | Hall            | 17'5" x 6'11" | 124 sq. ft | Yes                    |
| 20 | Bedroom         | 14'4" x 11'8" | 167 sq. ft | Yes                    |
| 21 | Toilet          | 5'3" x 4'8"   | 24 sq. ft  | Yes                    |
| 22 | Bath            | 8'0" x 11'0"  | 71 sq. ft  | Yes                    |
| 23 | W.I.C.          | 5'7" x 12'3"  | 61 sq. ft  | Yes                    |
| 24 | Bedroom         | 13'0" x 11'8" | 151 sq. ft | Yes                    |
| 25 | Primary Bath    | 16'1" x 9'10" | 123 sq. ft | Yes                    |
| 26 | Primary Bedroom | 23'0" x 23'8" | 393 sq. ft | Yes                    |

25 Morningside Drive, Livingston, Essex County, New Jersey,  
United States, 07039

## 1 Floor 1 - Utility



Dimensions: 12'7" x 13'6"  
Area: 161 sq. ft  
Counted as living area: Yes

Heated: Yes  
Finished: Yes  
Enclosed: Yes  
Contiguous: Yes  
Permitted: Yes  
Wet space: No  
Addition: No  
Conversion: No

## 2 Floor 1 - Recreation Room



Dimensions: 18'5" x 24'0"  
Area: 430 sq. ft  
Counted as living area: Yes

Heated: Yes  
Finished: Yes  
Enclosed: Yes  
Contiguous: Yes  
Permitted: Yes  
Wet space: No  
Addition: No  
Conversion: No

## Home report

25 Morningside Drive, Livingston, Essex County, New Jersey,  
United States, 07039

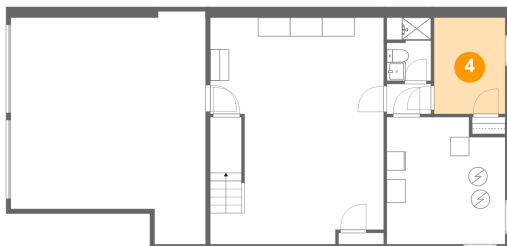
### 3 Floor 1 - Garage



Dimensions: 20'8" x 24'8"  
Area: 443 sq. ft  
Counted as living area: No

Heated: No  
Finished: No  
Enclosed: Yes  
Contiguous: Yes  
Permitted: Yes  
Wet space: No  
Addition: No  
Conversion: No

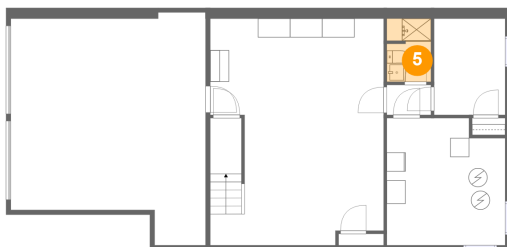
### 4 Floor 1 - Gym



Dimensions: 7'6" x 10'2"  
Area: 77 sq. ft  
Counted as living area: Yes

Heated: Yes  
Finished: Yes  
Enclosed: Yes  
Contiguous: Yes  
Permitted: Yes  
Wet space: No  
Addition: No  
Conversion: No

### 5 Floor 1 - Bath



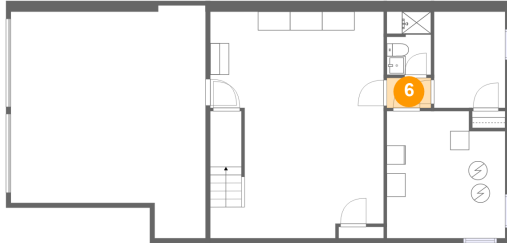
Dimensions: 4'8" x 6'8"  
Area: 31 sq. ft  
Counted as living area: Yes

Heated: Yes  
Finished: Yes  
Enclosed: Yes  
Contiguous: Yes  
Permitted: Yes  
Wet space: Yes  
Addition: No  
Conversion: No

## Home report

25 Morningside Drive, Livingston, Essex County, New Jersey,  
United States, 07039

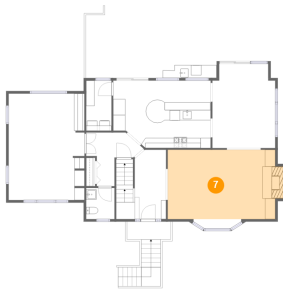
### 6 Floor 1 - Hall



Dimensions: 4'8" x 3'2"  
Area: 15 sq. ft  
Counted as living area: Yes

Heated: Yes  
Finished: Yes  
Enclosed: Yes  
Contiguous: Yes  
Permitted: Yes  
Wet space: No  
Addition: No  
Conversion: No

### 7 Floor 2 - Living Room



Dimensions: 21'2" x 13'7"  
Area: 298 sq. ft  
Counted as living area: Yes

Heated: Yes  
Finished: Yes  
Enclosed: Yes  
Contiguous: Yes  
Permitted: Yes  
Wet space: No  
Addition: No  
Conversion: No

### 8 Floor 2 - P/R



Dimensions: 5'7" x 6'2"  
Area: 34 sq. ft  
Counted as living area: Yes

Heated: Yes  
Finished: Yes  
Enclosed: Yes  
Contiguous: Yes  
Permitted: Yes  
Wet space: Yes  
Addition: No  
Conversion: No

25 Morningside Drive, Livingston, Essex County, New Jersey,  
United States, 07039

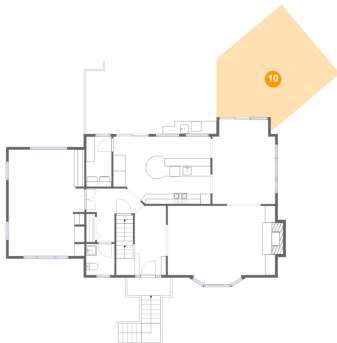
## 9 Floor 2 - Hall



Dimensions: 11'3" x 10'7"  
Area: 67 sq. ft  
Counted as living area: Yes

Heated: Yes  
Finished: Yes  
Enclosed: Yes  
Contiguous: Yes  
Permitted: Yes  
Wet space: No  
Addition: No  
Conversion: No

## 10 Floor 2 - Deck



Dimensions: 24'0" x 17'10"  
Area: 354 sq. ft  
Counted as living area: No

Heated: No  
Finished: Yes  
Enclosed: No  
Contiguous: Yes  
Permitted: Yes  
Wet space: No  
Addition: No  
Conversion: No

## 11 Floor 2 - Kitchen



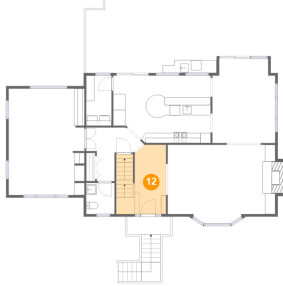
Dimensions: 19'2" x 13'3"  
Area: 240 sq. ft  
Counted as living area: Yes

Heated: Yes  
Finished: Yes  
Enclosed: Yes  
Contiguous: Yes  
Permitted: Yes  
Wet space: No  
Addition: No  
Conversion: No



25 Morningside Drive, Livingston, Essex County, New Jersey,  
United States, 07039

## 12 Floor 2 - Foyer



Dimensions: 6'2" x 13'1"  
Area: 123 sq. ft  
Counted as living area: Yes

Heated: Yes  
Finished: Yes  
Enclosed: Yes  
Contiguous: Yes  
Permitted: Yes  
Wet space: No  
Addition: No  
Conversion: No

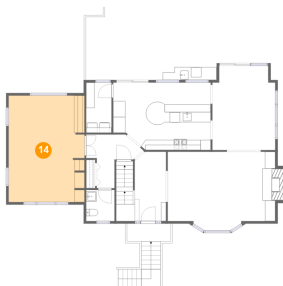
## 13 Floor 2 - Laundry



Dimensions: 5'0" x 9'11"  
Area: 49 sq. ft  
Counted as living area: Yes

Heated: Yes  
Finished: Yes  
Enclosed: Yes  
Contiguous: Yes  
Permitted: Yes  
Wet space: No  
Addition: No  
Conversion: No

## 14 Floor 2 - Family Room



Dimensions: 14'11" x 20'11"  
Area: 310 sq. ft  
Counted as living area: Yes

Heated: Yes  
Finished: Yes  
Enclosed: Yes  
Contiguous: Yes  
Permitted: Yes  
Wet space: No  
Addition: No  
Conversion: No

## Home report

25 Morningside Drive, Livingston, Essex County, New Jersey,  
United States, 07039

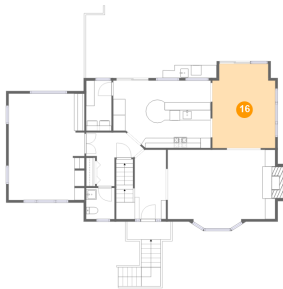
### 15 Floor 2 - Deck



Dimensions: 25'9" x 14'7"  
Area: 331 sq. ft  
Counted as living area: No

Heated: No  
Finished: Yes  
Enclosed: No  
Contiguous: Yes  
Permitted: Yes  
Wet space: No  
Addition: No  
Conversion: No

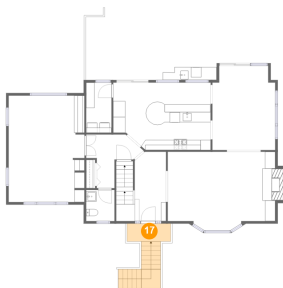
### 16 Floor 2 - Dining Room



Dimensions: 12'4" x 16'7"  
Area: 196 sq. ft  
Counted as living area: Yes

Heated: Yes  
Finished: Yes  
Enclosed: Yes  
Contiguous: Yes  
Permitted: Yes  
Wet space: No  
Addition: No  
Conversion: No

### 17 Floor 2 - Porch



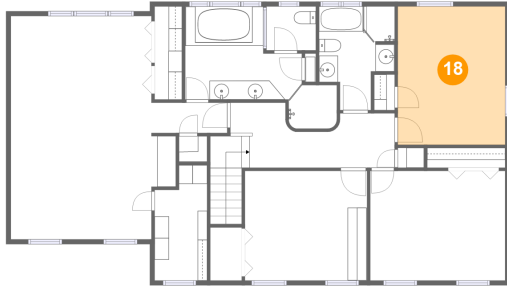
Dimensions: 8'7" x 3'6"  
Area: 82 sq. ft  
Counted as living area: No

Heated: No  
Finished: Yes  
Enclosed: No  
Contiguous: Yes  
Permitted: Yes  
Wet space: No  
Addition: No  
Conversion: No

## Home report

25 Morningside Drive, Livingston, Essex County, New Jersey,  
United States, 07039

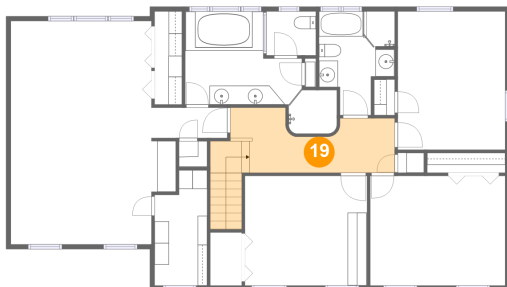
### 18 Floor 3 - Bedroom



Dimensions: 11'5" x 14'8"  
Area: 167 sq. ft  
Counted as living area: Yes

Heated: Yes  
Finished: Yes  
Enclosed: Yes  
Contiguous: Yes  
Permitted: Yes  
Wet space: No  
Addition: No  
Conversion: No

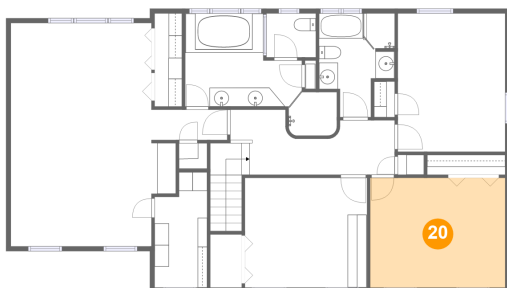
### 19 Floor 3 - Hall



Dimensions: 17'5" x 6'11"  
Area: 124 sq. ft  
Counted as living area: Yes

Heated: Yes  
Finished: Yes  
Enclosed: Yes  
Contiguous: Yes  
Permitted: Yes  
Wet space: No  
Addition: No  
Conversion: No

### 20 Floor 3 - Bedroom



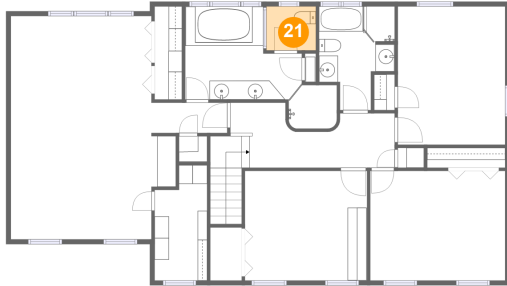
Dimensions: 14'4" x 11'8"  
Area: 167 sq. ft  
Counted as living area: Yes

Heated: Yes  
Finished: Yes  
Enclosed: Yes  
Contiguous: Yes  
Permitted: Yes  
Wet space: No  
Addition: No  
Conversion: No

## Home report

25 Morningside Drive, Livingston, Essex County, New Jersey,  
United States, 07039

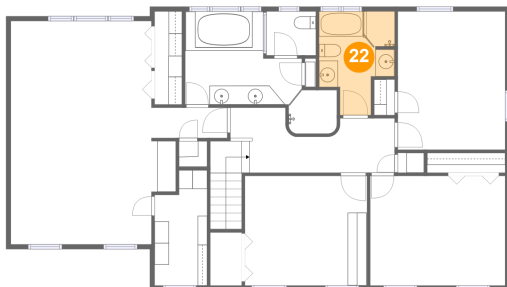
### 21 Floor 3 - Toilet



Dimensions: 5'3" x 4'8"  
Area: 24 sq. ft  
Counted as living area: Yes

Heated: Yes  
Finished: Yes  
Enclosed: Yes  
Contiguous: Yes  
Permitted: Yes  
Wet space: Yes  
Addition: No  
Conversion: No

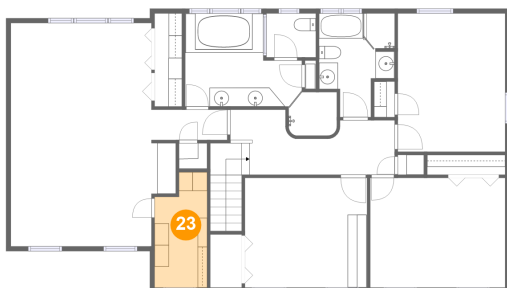
### 22 Floor 3 - Bath



Dimensions: 8'0" x 11'0"  
Area: 71 sq. ft  
Counted as living area: Yes

Heated: Yes  
Finished: Yes  
Enclosed: Yes  
Contiguous: Yes  
Permitted: Yes  
Wet space: Yes  
Addition: No  
Conversion: No

### 23 Floor 3 - W.I.C.

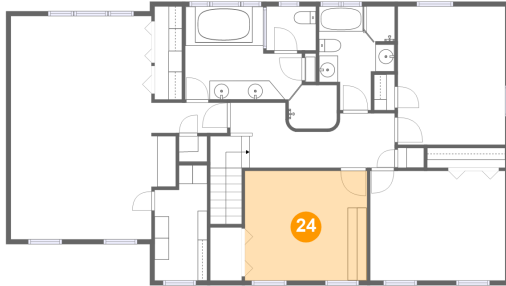


Dimensions: 5'7" x 12'3"  
Area: 61 sq. ft  
Counted as living area: Yes

Heated: Yes  
Finished: Yes  
Enclosed: Yes  
Contiguous: Yes  
Permitted: Yes  
Wet space: No  
Addition: No  
Conversion: No

25 Morningside Drive, Livingston, Essex County, New Jersey,  
United States, 07039

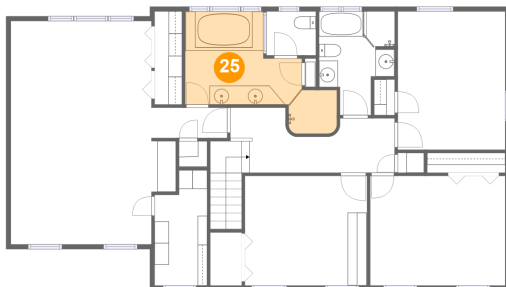
### 24 Floor 3 - Bedroom



Dimensions: 13'0" x 11'8"  
Area: 151 sq. ft  
Counted as living area: Yes

Heated: Yes  
Finished: Yes  
Enclosed: Yes  
Contiguous: Yes  
Permitted: Yes  
Wet space: No  
Addition: No  
Conversion: No

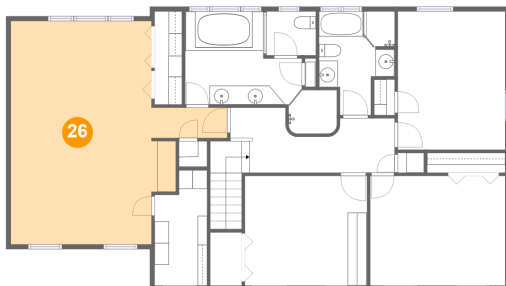
### 25 Floor 3 - Primary Bath



Dimensions: 16'1" x 9'10"  
Area: 123 sq. ft  
Counted as living area: Yes

Heated: Yes  
Finished: Yes  
Enclosed: Yes  
Contiguous: Yes  
Permitted: Yes  
Wet space: Yes  
Addition: No  
Conversion: No

### 26 Floor 3 - Primary Bedroom



Dimensions: 23'0" x 23'8"  
Area: 393 sq. ft  
Counted as living area: Yes

Heated: Yes  
Finished: Yes  
Enclosed: Yes  
Contiguous: Yes  
Permitted: Yes  
Wet space: No  
Addition: No  
Conversion: No