



**TOTAL: 1657 sq. ft**  
BELOW GRADE: 528 sq. ft, FLOOR 2: 1129 sq. ft  
EXCLUDED AREAS: BASEMENT: 232 sq. ft, STORAGE: 136 sq. ft, GARAGE: 410 sq. ft,  
DECK: 664 sq. ft, BAY WINDOW: 4 sq. ft, FIREPLACE: 7 sq. ft,  
WALLS: 167 sq. ft

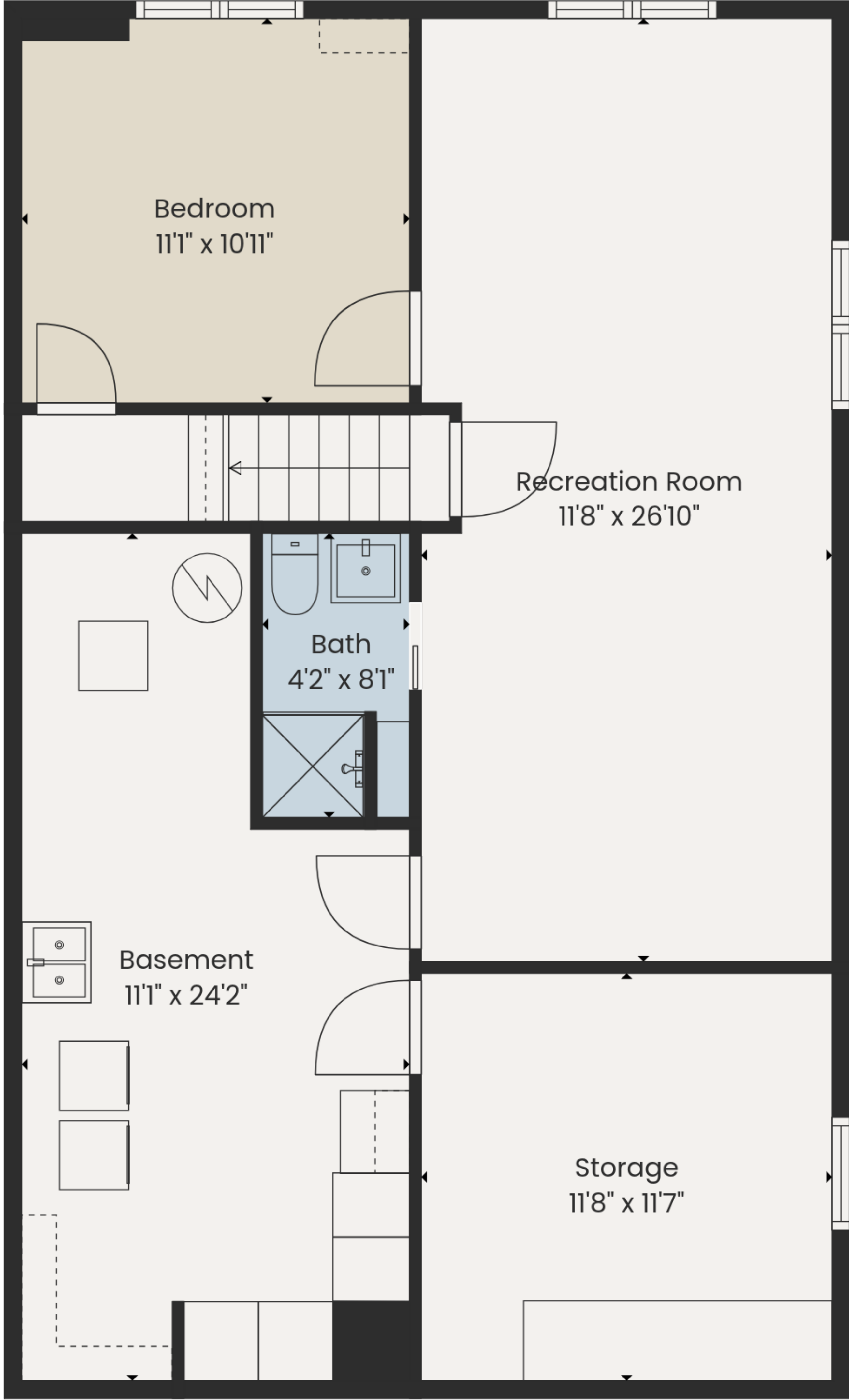




**TOTAL: 1657 sq. ft**  
BELOW GRADE: 528 sq. ft, FLOOR 2: 1129 sq. ft  
EXCLUDED AREAS: BASEMENT: 232 sq. ft, STORAGE: 136 sq. ft, GARAGE: 410 sq. ft,  
DECK: 664 sq. ft, BAY WINDOW: 4 sq. ft, FIREPLACE: 7 sq. ft,  
WALLS: 167 sq. ft







Floor 1



Floor 2

**TOTAL: 1657 sq. ft**  
BELOW GRADE: 528 sq. ft, FLOOR 2: 1129 sq. ft  
EXCLUDED AREAS: BASEMENT: 232 sq. ft, STORAGE: 136 sq. ft, GARAGE: 410 sq. ft,  
DECK: 664 sq. ft, BAY WINDOW: 4 sq. ft, FIREPLACE: 7 sq. ft,  
WALLS: 167 sq. ft

