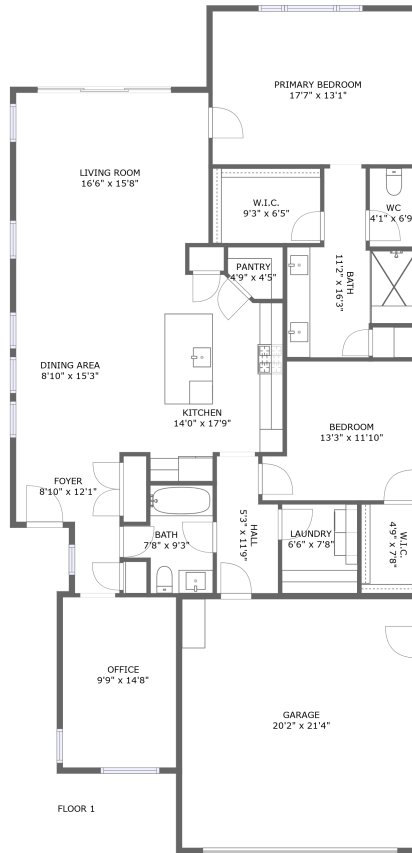



132 Claret, Rancho Mirage, Riverside County, California, United States, 92270



Property summary


 **1** Garages

 **2** Bedrooms

 **2** Bathrooms

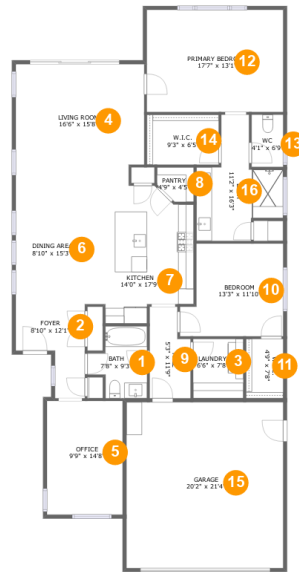
 **0** Half baths

 **1** Floors

 **1,817** Gross living area sqft

 **2,272** Total sqft

132 Claret, Rancho Mirage, Riverside County, California, United States, 92270



Room dimensions

Floor 1

Total sqft: 2272 Living area: 1817

#		Dimensions	sqft	Counted as living area
1	Bath	7'8" x 9'3"	56 sq. ft	Yes
2	Entry	8'10" x 12'1"	77 sq. ft	Yes
3	Utility	6'6" x 7'8"	49 sq. ft	Yes
4	Living Room	16'6" x 15'8"	253 sq. ft	Yes
5	Office	9'9" x 14'8"	142 sq. ft	Yes
6	Dining Room	8'10" x 15'3"	135 sq. ft	Yes
7	Kitchen	14'0" x 17'9"	218 sq. ft	Yes
8	Pantry	4'9" x 4'5"	19 sq. ft	Yes
9	Hall	5'3" x 11'9"	55 sq. ft	Yes
10	Bedroom	13'3" x 11'10"	141 sq. ft	Yes
11	Cl	4'9" x 7'8"	37 sq. ft	Yes

**132 Claret, Rancho Mirage, Riverside County,
California, United States, 92270**

#		Dimensions	sqft	Counted as living area
12	Bedroom	17'7" x 13'1"	231 sq. ft	Yes
13	Bath	4'1" x 6'9"	27 sq. ft	Yes
14	Cl	9'3" x 6'5"	59 sq. ft	Yes
15	Garage	20'2" x 21'4"	431 sq. ft	No
16	Bath	11'2" x 16'3"	117 sq. ft	Yes

132 Claret, Rancho Mirage, Riverside County, California, United States, 92270

1 Floor 1 - Bath



Dimensions: 7'8" x 9'3"
Area: 56 sq. ft
Counted as living area: Yes

Heated: Yes
Finished: Yes
Enclosed: Yes
Contiguous: Yes
Permitted: Yes
Wet space: Yes
Addition: No
Conversion: No

2 Floor 1 - Entry



Dimensions: 8'10" x 12'1"
Area: 77 sq. ft
Counted as living area: Yes

Heated: Yes
Finished: Yes
Enclosed: Yes
Contiguous: Yes
Permitted: Yes
Wet space: No
Addition: No
Conversion: No

132 Claret, Rancho Mirage, Riverside County, California, United States, 92270

3 Floor 1 - Utility



Dimensions: 6'6" x 7'8"
Area: 49 sq. ft
Counted as living area: Yes

Heated: Yes
Finished: Yes
Enclosed: Yes
Contiguous: Yes
Permitted: Yes
Wet space: No
Addition: No
Conversion: No

4 Floor 1 - Living Room



Dimensions: 16'6" x 15'8"
Area: 253 sq. ft
Counted as living area: Yes

Heated: Yes
Finished: Yes
Enclosed: Yes
Contiguous: Yes
Permitted: Yes
Wet space: No
Addition: No
Conversion: No

5 Floor 1 - Office



Dimensions: 9'9" x 14'8"
Area: 142 sq. ft
Counted as living area: Yes

Heated: Yes
Finished: Yes
Enclosed: Yes
Contiguous: Yes
Permitted: Yes
Wet space: No
Addition: No
Conversion: No

132 Claret, Rancho Mirage, Riverside County, California, United States, 92270

6 Floor 1 - Dining Room



Dimensions: 8'10" x 15'3"
Area: 135 sq. ft
Counted as living area: Yes

Heated: Yes
Finished: Yes
Enclosed: Yes
Contiguous: Yes
Permitted: Yes
Wet space: No
Addition: No
Conversion: No

7 Floor 1 - Kitchen



Dimensions: 14'0" x 17'9"
Area: 218 sq. ft
Counted as living area: Yes

Heated: Yes
Finished: Yes
Enclosed: Yes
Contiguous: Yes
Permitted: Yes
Wet space: No
Addition: No
Conversion: No

8 Floor 1 - Pantry



Dimensions: 4'9" x 4'5"
Area: 19 sq. ft
Counted as living area: Yes

Heated: Yes
Finished: Yes
Enclosed: Yes
Contiguous: Yes
Permitted: Yes
Wet space: No
Addition: No
Conversion: No

132 Claret, Rancho Mirage, Riverside County, California, United States, 92270

9 Floor 1 - Hall



Dimensions: 5'3" x 11'9"
Area: 55 sq. ft
Counted as living area: Yes

Heated: Yes
Finished: Yes
Enclosed: Yes
Contiguous: Yes
Permitted: Yes
Wet space: No
Addition: No
Conversion: No

10 Floor 1 - Bedroom



Dimensions: 13'3" x 11'10"
Area: 141 sq. ft
Counted as living area: Yes

Heated: Yes
Finished: Yes
Enclosed: Yes
Contiguous: Yes
Permitted: Yes
Wet space: No
Addition: No
Conversion: No

11 Floor 1 - Cl



Dimensions: 4'9" x 7'8"
Area: 37 sq. ft
Counted as living area: Yes

Heated: Yes
Finished: Yes
Enclosed: Yes
Contiguous: Yes
Permitted: Yes
Wet space: No
Addition: No
Conversion: No

132 Claret, Rancho Mirage, Riverside County, California, United States, 92270

12 Floor 1 - Bedroom



Dimensions: 17'7" x 13'1"
Area: 231 sq. ft
Counted as living area: Yes

Heated: Yes
Finished: Yes
Enclosed: Yes
Contiguous: Yes
Permitted: Yes
Wet space: No
Addition: No
Conversion: No

13 Floor 1 - Bath



Dimensions: 4'1" x 6'9"
Area: 27 sq. ft
Counted as living area: Yes

Heated: Yes
Finished: Yes
Enclosed: Yes
Contiguous: Yes
Permitted: Yes
Wet space: Yes
Addition: No
Conversion: No

14 Floor 1 - Cl



Dimensions: 9'3" x 6'5"
Area: 59 sq. ft
Counted as living area: Yes

Heated: Yes
Finished: Yes
Enclosed: Yes
Contiguous: Yes
Permitted: Yes
Wet space: No
Addition: No
Conversion: No

**132 Claret, Rancho Mirage, Riverside County,
California, United States, 92270**

15 Floor 1 - Garage



Dimensions: 20'2" x 21'4"
Area: 431 sq. ft
Counted as living area: No

Heated: No
Finished: No
Enclosed: Yes
Contiguous: Yes
Permitted: Yes
Wet space: No
Addition: No
Conversion: No

16 Floor 1 - Bath



Dimensions: 11'2" x 16'3"
Area: 117 sq. ft
Counted as living area: Yes

Heated: Yes
Finished: Yes
Enclosed: Yes
Contiguous: Yes
Permitted: Yes
Wet space: Yes
Addition: No
Conversion: No