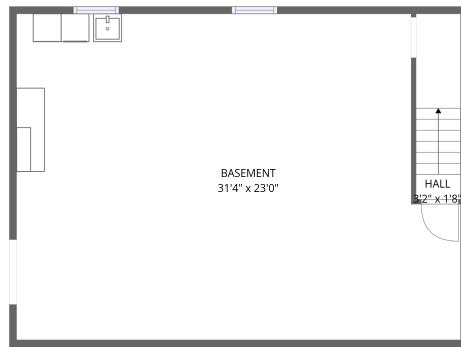
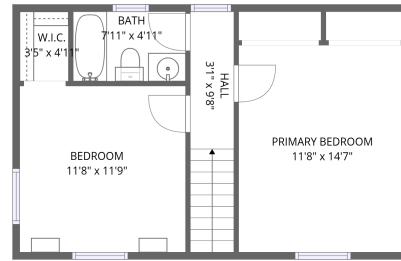
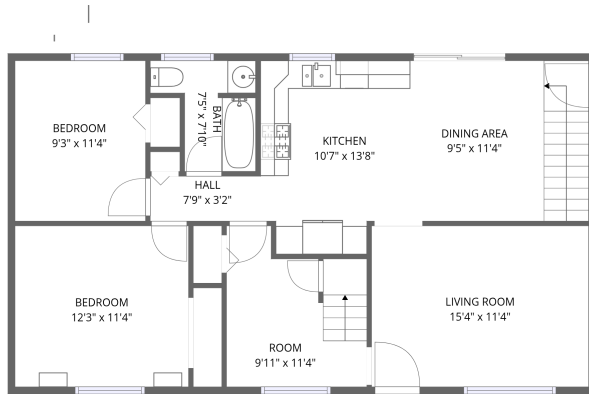


# Home data report

## 9243 Knolson St, Livonia, MI, US



**Total Area: 1440 sq. ft**

Below Ground: 47 sq. ft, 1st Floor: 932 sq. ft, 2nd Floor: 461 sq. ft

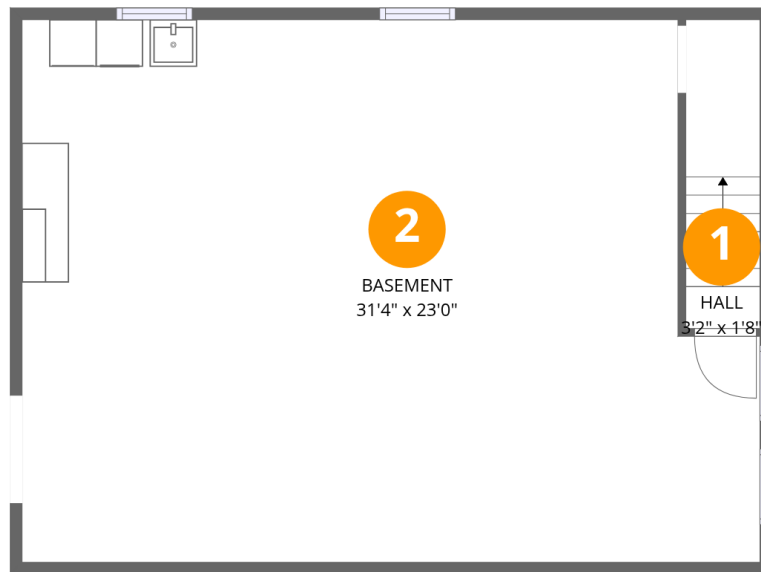
Excluded: Basement 675 sq. ft, Walls: 163 sq. ft

### Property summary

 **3** Floors

 **4** Bedrooms

 **2** Bathrooms



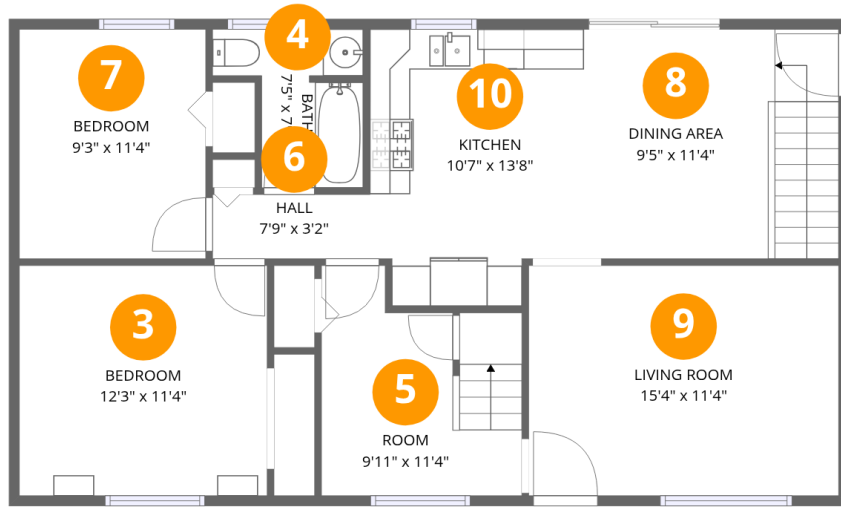
## Room dimensions

Floor 1 Below grade

Total: 47 sqft

Excluded: 675 sqft

#		Dimensions	sqft	Counted as living area
1	Hall	3'2" x 1'8"	41 sq. ft	Yes
2	Basement	31'4" x 23'0"	675 sq. ft	No



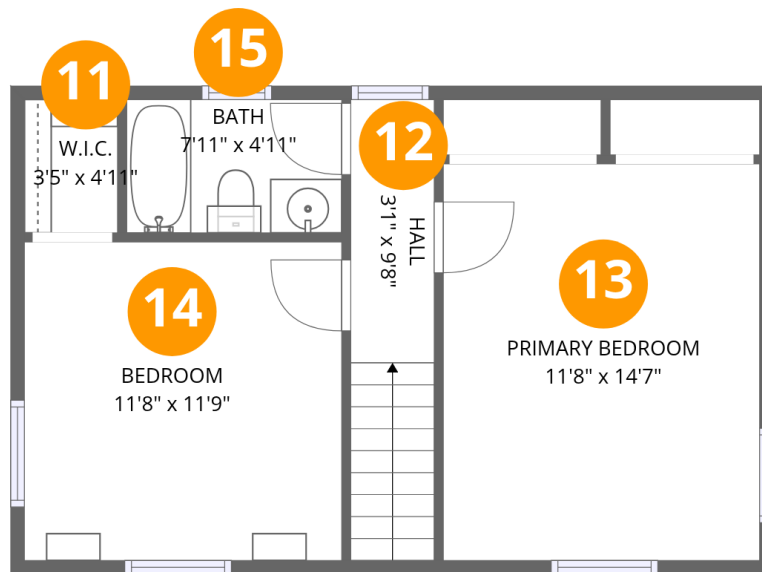
## Room dimensions

Floor 2

Total: 932 sqft

Excluded: 0 sqft

#		Dimensions	sqft	Counted as living area
3	Bedroom	12'3" x 11'4"	139 sq. ft	Yes
4	Bath	7'5" x 7'10"	44 sq. ft	Yes
5	Room	9'11" x 11'4"	96 sq. ft	Yes
6	Hall	7'9" x 3'2"	25 sq. ft	Yes
7	Bedroom	9'3" x 11'4"	104 sq. ft	Yes
8	Dining Area	9'5" x 11'4"	143 sq. ft	Yes
9	Living Room	15'4" x 11'4"	174 sq. ft	Yes
10	Kitchen	10'7" x 13'8"	134 sq. ft	Yes



## Room dimensions

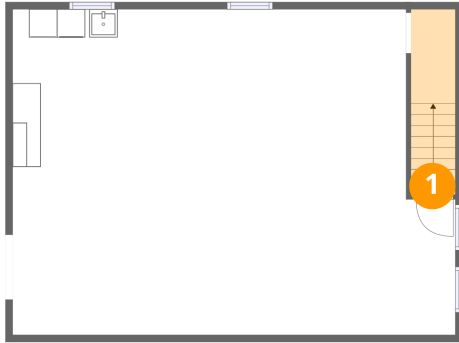
Floor 3

Total: 461 sqft

Excluded: 0 sqft

#		Dimensions	sqft	Counted as living area
11	W.I.C.	3'5" x 4'11"	17 sq. ft	Yes
12	Hall	3'1" x 9'8"	52 sq. ft	Yes
13	Primary Bedroom	11'8" x 14'7"	171 sq. ft	Yes
14	Bedroom	11'8" x 11'9"	137 sq. ft	Yes
15	Bath	7'11" x 4'11"	39 sq. ft	Yes

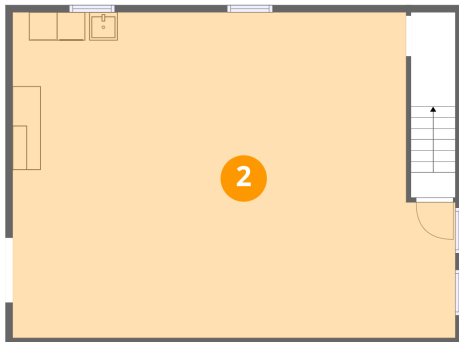
### 1 Floor 1 - Hall



Dimensions: 3'2" x 1'8"  
Area: 41 sq. ft  
Counted as living area: No

Heated: Yes  
Finished: Yes  
Enclosed: Yes  
Contiguous: No  
Permitted: Yes  
Wet space: No  
Addition: No  
Conversion: No

### 2 Floor 1 - Basement



Dimensions: 31'4" x 23'0"  
Area: 675 sq. ft  
Counted as living area: No

Heated: Yes  
Finished: No  
Enclosed: Yes  
Contiguous: Yes  
Permitted: Yes  
Wet space: No  
Addition: No  
Conversion: No

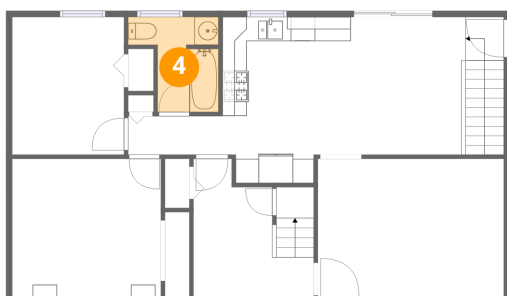
### 3 Floor 2 - Bedroom



Dimensions: 12'3" x 11'4"  
Area: 139 sq. ft  
Counted as living area: Yes

Heated: Yes  
Finished: Yes  
Enclosed: Yes  
Contiguous: Yes  
Permitted: Yes  
Wet space: No  
Addition: No  
Conversion: No

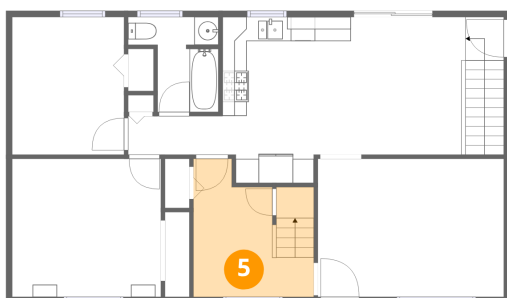
### 4 Floor 2 - Bath



Dimensions: 7'5" x 7'10"  
Area: 44 sq. ft  
Counted as living area: Yes

Heated: Yes  
Finished: Yes  
Enclosed: Yes  
Contiguous: Yes  
Permitted: Yes  
Wet space: Yes  
Addition: No  
Conversion: No

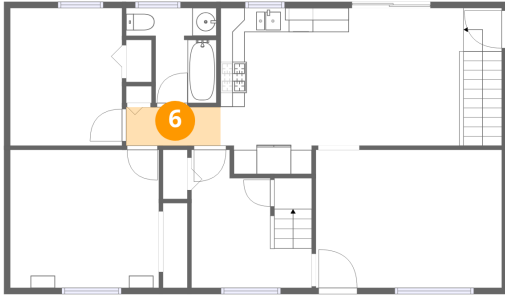
### 5 Floor 2 - Room



Dimensions: 9'11" x 11'4"  
Area: 96 sq. ft  
Counted as living area: Yes

Heated: Yes  
Finished: Yes  
Enclosed: Yes  
Contiguous: Yes  
Permitted: Yes  
Wet space: No  
Addition: No  
Conversion: No

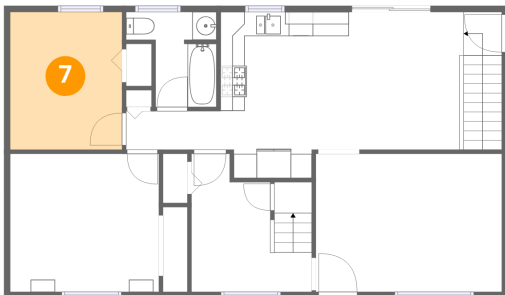
### 6 Floor 2 - Hall



Dimensions: 7'9" x 3'2"  
Area: 25 sq. ft  
Counted as living area: Yes

Heated: Yes  
Finished: Yes  
Enclosed: Yes  
Contiguous: Yes  
Permitted: Yes  
Wet space: No  
Addition: No  
Conversion: No

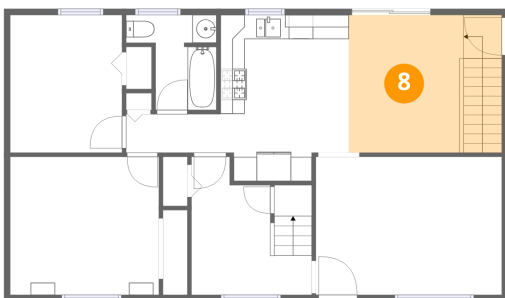
### 7 Floor 2 - Bedroom



Dimensions: 9'3" x 11'4"  
Area: 104 sq. ft  
Counted as living area: Yes

Heated: Yes  
Finished: Yes  
Enclosed: Yes  
Contiguous: Yes  
Permitted: Yes  
Wet space: No  
Addition: No  
Conversion: No

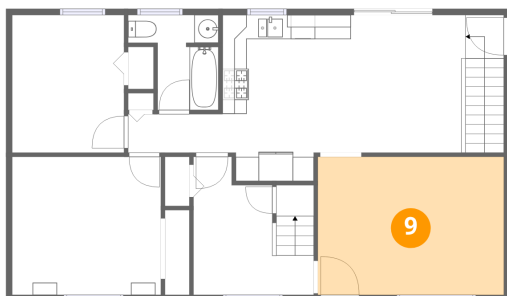
### 8 Floor 2 - Dining Area



Dimensions: 9'5" x 11'4"  
Area: 143 sq. ft  
Counted as living area: Yes

Heated: Yes  
Finished: Yes  
Enclosed: Yes  
Contiguous: Yes  
Permitted: Yes  
Wet space: No  
Addition: No  
Conversion: No

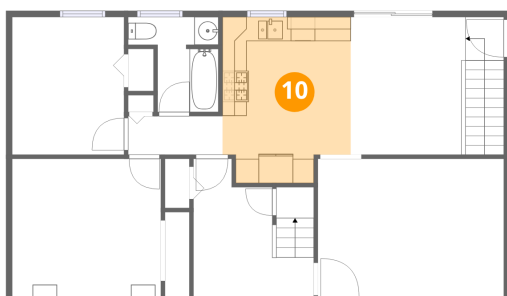
### 9 Floor 2 - Living Room



Dimensions: 15'4" x 11'4"  
Area: 174 sq. ft  
Counted as living area: Yes

Heated: Yes  
Finished: Yes  
Enclosed: Yes  
Contiguous: Yes  
Permitted: Yes  
Wet space: No  
Addition: No  
Conversion: No

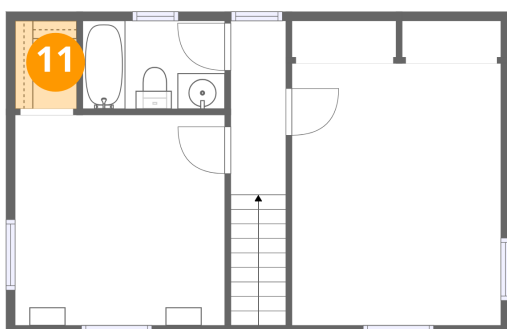
### 10 Floor 2 - Kitchen



Dimensions: 10'7" x 13'8"  
Area: 134 sq. ft  
Counted as living area: Yes

Heated: Yes  
Finished: Yes  
Enclosed: Yes  
Contiguous: Yes  
Permitted: Yes  
Wet space: No  
Addition: No  
Conversion: No

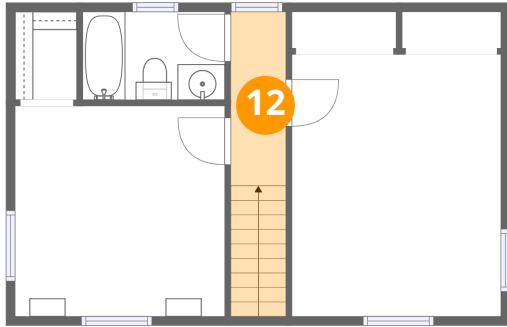
### 11 Floor 3 - W.I.C.



Dimensions: 3'5" x 4'11"  
Area: 17 sq. ft  
Counted as living area: Yes

Heated: Yes  
Finished: Yes  
Enclosed: Yes  
Contiguous: Yes  
Permitted: Yes  
Wet space: No  
Addition: No  
Conversion: No

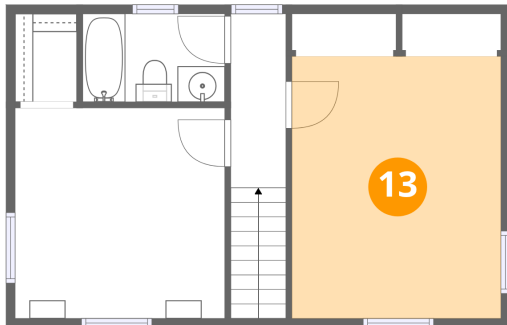
**12** Floor 3 - Hall



Dimensions: 3'1" x 9'8"  
Area: 52 sq. ft  
Counted as living area: Yes

Heated: Yes  
Finished: Yes  
Enclosed: Yes  
Contiguous: Yes  
Permitted: Yes  
Wet space: No  
Addition: No  
Conversion: No

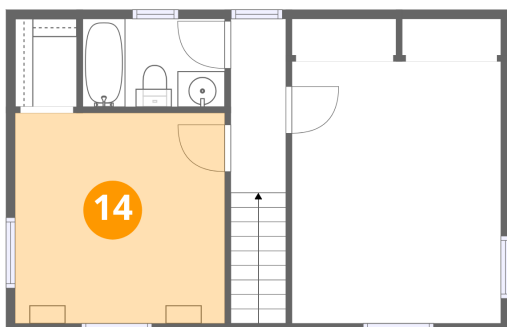
**13** Floor 3 - Primary Bedroom



Dimensions: 11'8" x 14'7"  
Area: 171 sq. ft  
Counted as living area: Yes

Heated: Yes  
Finished: Yes  
Enclosed: Yes  
Contiguous: Yes  
Permitted: Yes  
Wet space: No  
Addition: No  
Conversion: No

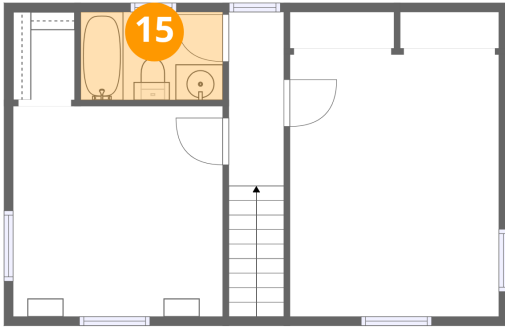
**14** Floor 3 - Bedroom



Dimensions: 11'8" x 11'9"  
Area: 137 sq. ft  
Counted as living area: Yes

Heated: Yes  
Finished: Yes  
Enclosed: Yes  
Contiguous: Yes  
Permitted: Yes  
Wet space: No  
Addition: No  
Conversion: No

**15** Floor 3 - Bath



Dimensions: 7'11" x 4'11"  
Area: 39 sq. ft  
Counted as living area: Yes

Heated: Yes  
Finished: Yes  
Enclosed: Yes  
Contiguous: Yes  
Permitted: Yes  
Wet space: Yes  
Addition: No  
Conversion: No