

Room dimensions

Floor 1

Total:1119sqft

Excluded: 362sqft

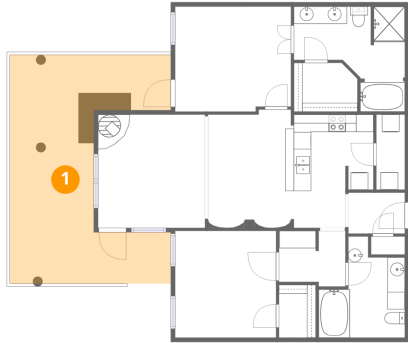
#		Dimensions	sqft	Counted as living area
1	Porch	18'6" x 26'3"	362 sq. ft	No
2	Bath	9'11" x 11'7"	84 sq. ft	Yes
3	Laundry	3'3" x 8'7"	28 sq. ft	Yes
4	Kitchen	9'2" x 13'0"	104 sq. ft	Yes
5	Dining Area	9'11" x 13'6"	130 sq. ft	Yes
6	Living Room	12'4" x 13'0"	160 sq. ft	Yes
7	Hall	6'6" x 4'9"	31 sq. ft	Yes
8	Primary Bath	12'9" x 12'1"	109 sq. ft	Yes
9	Bedroom	11'7" x 12'3"	142 sq. ft	Yes
10	W.I.C.	4'3" x 6'1"	26 sq. ft	Yes
11	Hall	7'8" x 6'5"	46 sq. ft	Yes

Home data report

1405 Vegas Verdes Drive #129,Santa Fe,NM,US

#		Dimensions	sqft	Counted as living area
12	Primary Bedroom	13'4" x 12'1"	158 sq. ft	Yes
13	W.I.C.	7'4" x 5'7"	39 sq. ft	Yes

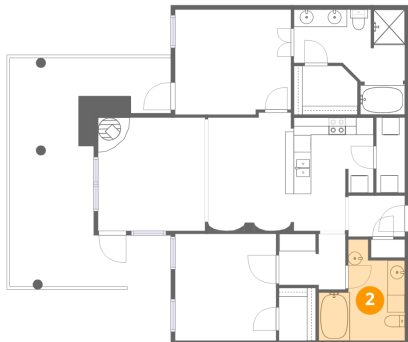
1 Floor 1 - Porch



Dimensions: 18'6" x 26'3"
Area: 362 sq. ft
Counted as living area: No

Heated: No
Finished: No
Enclosed: No
Contiguous: Yes
Permitted: Yes
Wet space: No
Addition: No
Conversion: No

2 Floor 1 - Bath



Dimensions: 9'11" x 11'7"
Area: 84 sq. ft
Counted as living area: Yes

Heated: Yes
Finished: Yes
Enclosed: Yes
Contiguous: Yes
Permitted: Yes
Wet space: Yes
Addition: No
Conversion: No

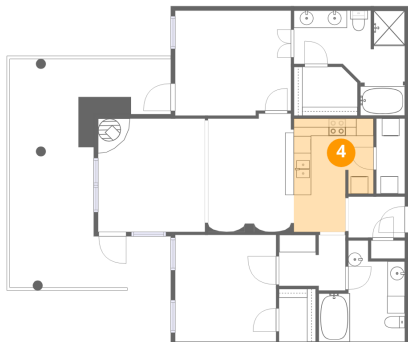
3 Floor 1 - Laundry



Dimensions: 3'3" x 8'7"
Area: 28 sq. ft
Counted as living area: Yes

Heated: Yes
Finished: Yes
Enclosed: Yes
Contiguous: Yes
Permitted: Yes
Wet space: No
Addition: No
Conversion: No

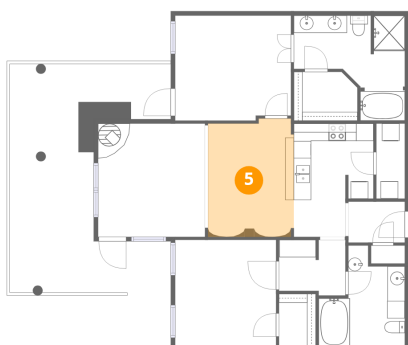
4 Floor 1 - Kitchen



Dimensions: 9'2" x 13'0"
Area: 104 sq. ft
Counted as living area: Yes

Heated: Yes
Finished: Yes
Enclosed: Yes
Contiguous: Yes
Permitted: Yes
Wet space: No
Addition: No
Conversion: No

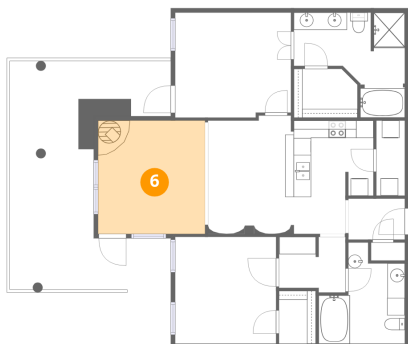
5 Floor 1 - Dining Area



Dimensions: 9'11" x 13'6"
Area: 130 sq. ft
Counted as living area: Yes

Heated: Yes
Finished: Yes
Enclosed: Yes
Contiguous: Yes
Permitted: Yes
Wet space: No
Addition: No
Conversion: No

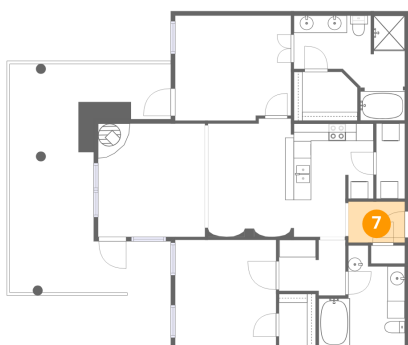
6 Floor 1 - Living Room



Dimensions: 12'4" x 13'0"
Area: 160 sq. ft
Counted as living area: Yes

Heated: Yes
Finished: Yes
Enclosed: Yes
Contiguous: Yes
Permitted: Yes
Wet space: No
Addition: No
Conversion: No

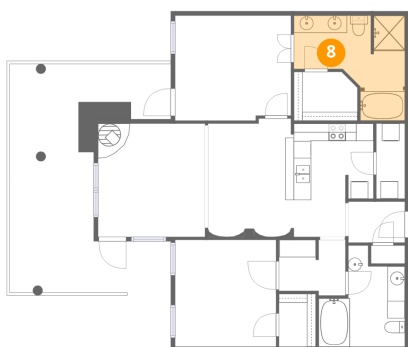
7 Floor 1 - Hall



Dimensions: 6'6" x 4'9"
Area: 31 sq. ft
Counted as living area: Yes

Heated: Yes
Finished: Yes
Enclosed: Yes
Contiguous: Yes
Permitted: Yes
Wet space: No
Addition: No
Conversion: No

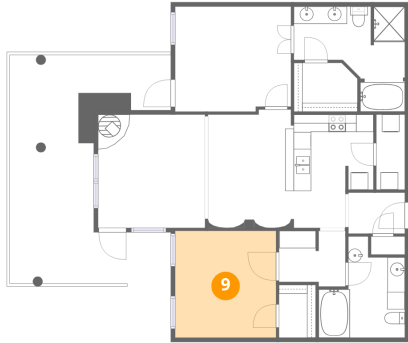
8 Floor 1 - Primary Bath



Dimensions: 12'9" x 12'1"
Area: 109 sq. ft
Counted as living area: Yes

Heated: Yes
Finished: Yes
Enclosed: Yes
Contiguous: Yes
Permitted: Yes
Wet space: Yes
Addition: No
Conversion: No

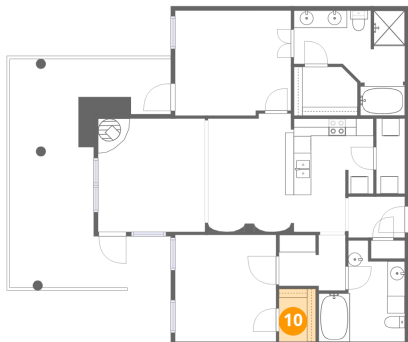
9 Floor 1 - Bedroom



Dimensions: 11'7" x 12'3"
Area: 142 sq. ft
Counted as living area: Yes

Heated: Yes
Finished: Yes
Enclosed: Yes
Contiguous: Yes
Permitted: Yes
Wet space: No
Addition: No
Conversion: No

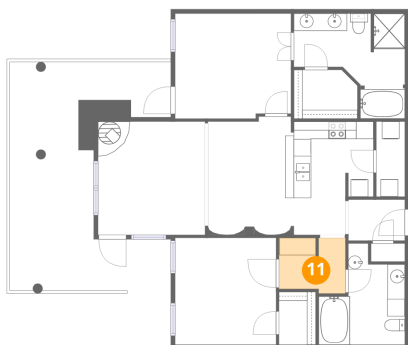
10 Floor 1 - W.I.C.



Dimensions: 4'3" x 6'1"
Area: 26 sq. ft
Counted as living area: Yes

Heated: Yes
Finished: Yes
Enclosed: Yes
Contiguous: Yes
Permitted: Yes
Wet space: No
Addition: No
Conversion: No

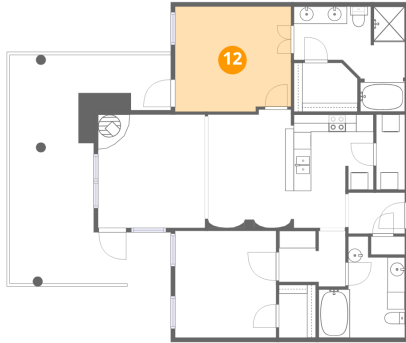
11 Floor 1 - Hall



Dimensions: 7'8" x 6'5"
Area: 46 sq. ft
Counted as living area: Yes

Heated: Yes
Finished: Yes
Enclosed: Yes
Contiguous: Yes
Permitted: Yes
Wet space: No
Addition: No
Conversion: No

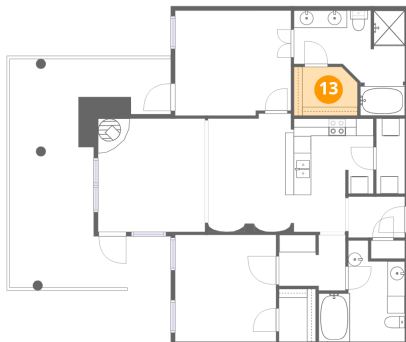
12 Floor 1 - Primary Bedroom



Dimensions: 13'4" x 12'1"
Area: 158 sq. ft
Counted as living area: Yes

Heated: Yes
Finished: Yes
Enclosed: Yes
Contiguous: Yes
Permitted: Yes
Wet space: No
Addition: No
Conversion: No

13 Floor 1 - W.I.C.



Dimensions: 7'4" x 5'7"
Area: 39 sq. ft
Counted as living area: Yes

Heated: Yes
Finished: Yes
Enclosed: Yes
Contiguous: Yes
Permitted: Yes
Wet space: No
Addition: No
Conversion: No