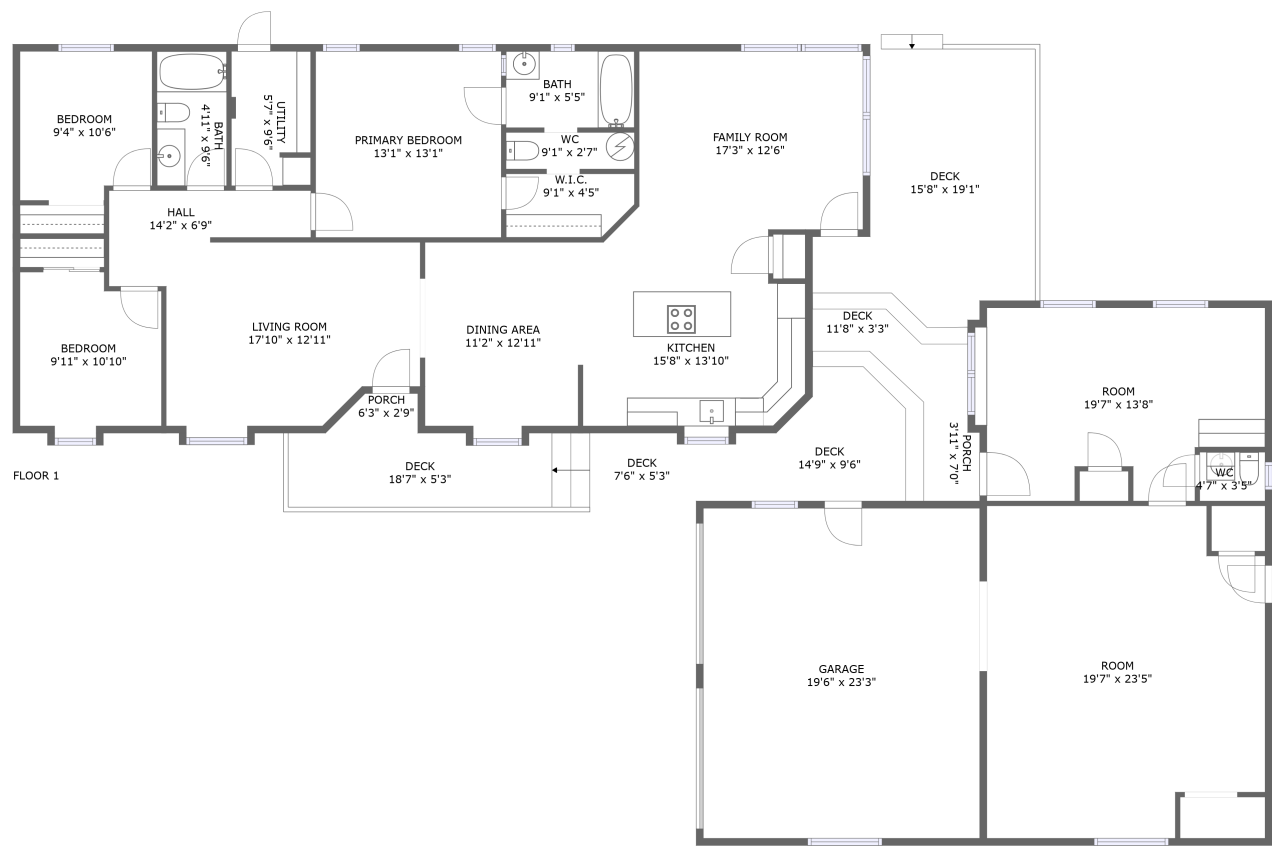


Home report

1730 Woodland Avenue, Woodburn, Marion County, Oregon,
United States, 97071




Total Area: 1790 sq. ft

Floor 1: 1790 sq. ft

Excluded: Undefined 21 sq. ft, Room 425 sq. ft, Garage 453 sq. ft, Deck 544 sq. ft, Porch 40 sq. ft, Embeddedwindow 14 sq. ft, Walls: 176 sq. ft

Property summary

 1 Floors

 3 Bedrooms

 2 Bathrooms

Home report

**1730 Woodland Avenue, Woodburn, Marion County, Oregon,
United States, 97071**



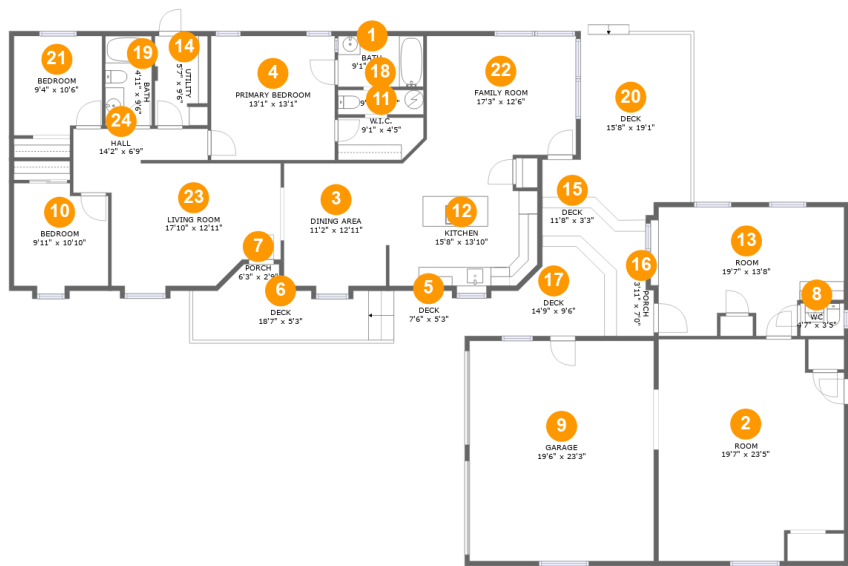
1
Half baths



1
Garages

Home report

1730 Woodland Avenue, Woodburn, Marion County, Oregon,
United States, 97071



Room dimensions

Floor 1 Total:1790sqft Excluded: 1497sqft

#		Max Dimensions	sqft	Included
1	Bath	9'1" x 5'5"	49 sq. ft	Yes
2	Room	19'7" x 23'5"	425 sq. ft	No
3	Dining Area	11'2" x 12'11"	143 sq. ft	Yes
4	Primary Bedroom	13'1" x 13'1"	172 sq. ft	Yes
5	Deck	7'6" x 5'3"	53 sq. ft	No
6	Deck	18'7" x 5'3"	97 sq. ft	No
7	Porch	6'3" x 2'9"	14 sq. ft	No
8	WC	4'7" x 3'5"	16 sq. ft	Yes
9	Garage	19'6" x 23'3"	453 sq. ft	No
10	Bedroom	9'11" x 10'10"	103 sq. ft	Yes
11	W.I.C.	9'1" x 4'5"	38 sq. ft	Yes

Home report

**1730 Woodland Avenue, Woodburn, Marion County, Oregon,
United States, 97071**

#		Max Dimensions	sqft	Included
12	Kitchen	15'8" x 13'10"	203 sq. ft	Yes
13	Room	19'7" x 13'8"	244 sq. ft	Yes
14	Utility	5'7" x 9'6"	52 sq. ft	Yes
15	Deck	11'8" x 3'3"	53 sq. ft	No
16	Porch	3'11" x 7'0"	26 sq. ft	No
17	Deck	14'9" x 9'6"	119 sq. ft	No
18	WC	9'1" x 2'7"	23 sq. ft	Yes
19	Bath	4'11" x 9'6"	47 sq. ft	Yes
20	Deck	15'8" x 19'1"	230 sq. ft	No
21	Bedroom	9'4" x 10'6"	94 sq. ft	Yes
22	Family Room	17'3" x 12'6"	200 sq. ft	Yes
23	Living Room	17'10" x 12'11"	212 sq. ft	Yes
24	Hall	14'2" x 6'9"	68 sq. ft	Yes

1730 Woodland Avenue, Woodburn, Marion County, Oregon,
United States, 97071

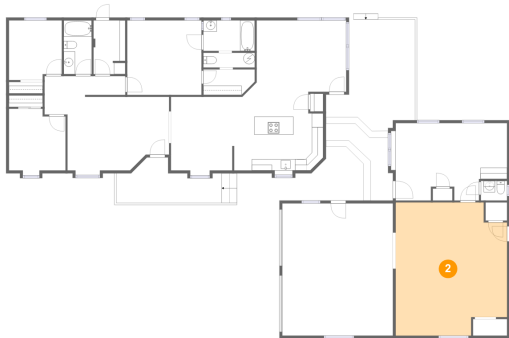
1 Floor 1 - Bath



Max Dimensions: 9'1" x 5'5"
Calculated Area: 49 sq. ft
Included: Yes

Heated: Yes
Finished: Yes
Enclosed: Yes
Contiguous: Yes
Permitted: Yes
Wet space: Yes
Addition: No
Conversion: No

2 Floor 1 - Room



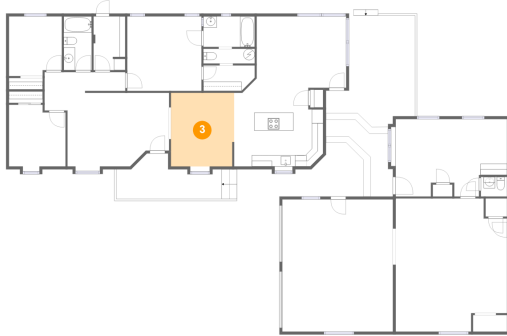
Max Dimensions: 19'7" x 23'5"
Calculated Area: 425 sq. ft
Included: No

Heated: Yes
Finished: No
Enclosed: Yes
Contiguous: Yes
Permitted: Yes
Wet space: No
Addition: No
Conversion: No

Home report

1730 Woodland Avenue, Woodburn, Marion County, Oregon,
United States, 97071

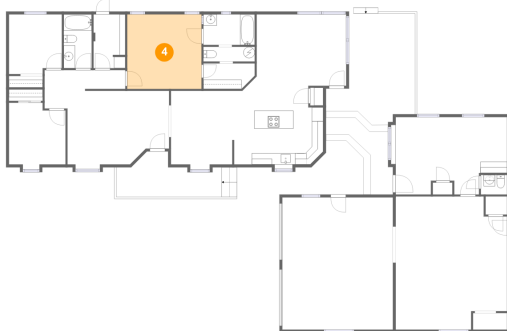
3 Floor 1 - Dining Area



Max Dimensions: 11'2" x 12'11"
Calculated Area: 143 sq. ft
Included: Yes

Heated: Yes
Finished: Yes
Enclosed: Yes
Contiguous: Yes
Permitted: Yes
Wet space: No
Addition: No
Conversion: No

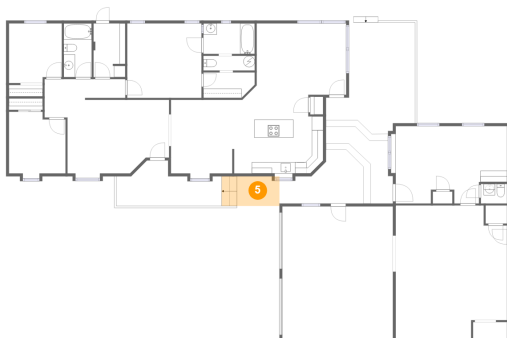
4 Floor 1 - Primary Bedroom



Max Dimensions: 13'1" x 13'1"
Calculated Area: 172 sq. ft
Included: Yes

Heated: Yes
Finished: Yes
Enclosed: Yes
Contiguous: Yes
Permitted: Yes
Wet space: No
Addition: No
Conversion: No

5 Floor 1 - Deck



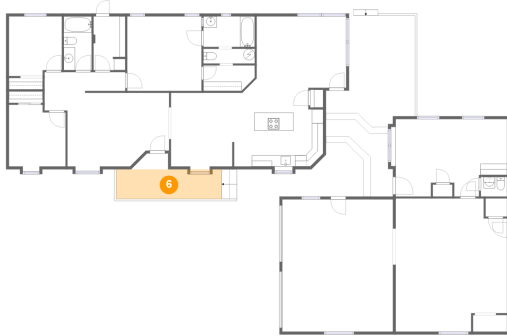
Max Dimensions: 7'6" x 5'3"
Calculated Area: 53 sq. ft
Included: No

Heated: No
Finished: Yes
Enclosed: No
Contiguous: Yes
Permitted: Yes
Wet space: No
Addition: No
Conversion: No

Home report

1730 Woodland Avenue, Woodburn, Marion County, Oregon,
United States, 97071

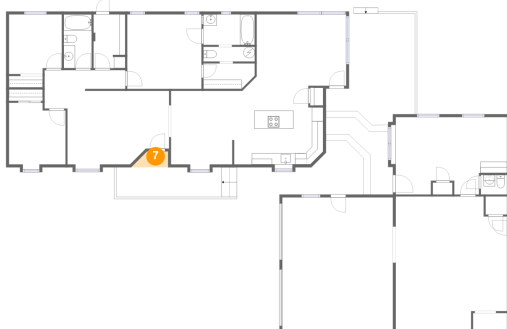
6 Floor 1 - Deck



Max Dimensions: 18'7" x 5'3"
Calculated Area: 97 sq. ft
Included: No

Heated: No
Finished: Yes
Enclosed: No
Contiguous: Yes
Permitted: Yes
Wet space: No
Addition: No
Conversion: No

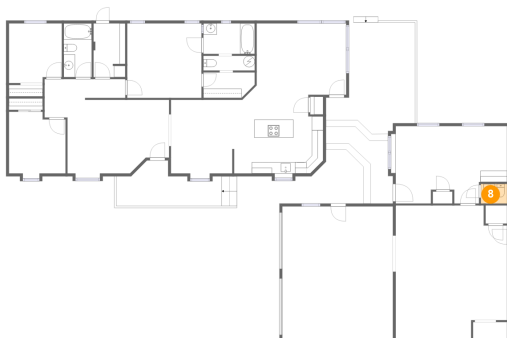
7 Floor 1 - Porch



Max Dimensions: 6'3" x 2'9"
Calculated Area: 14 sq. ft
Included: No

Heated: No
Finished: Yes
Enclosed: No
Contiguous: Yes
Permitted: Yes
Wet space: No
Addition: No
Conversion: No

8 Floor 1 - WC



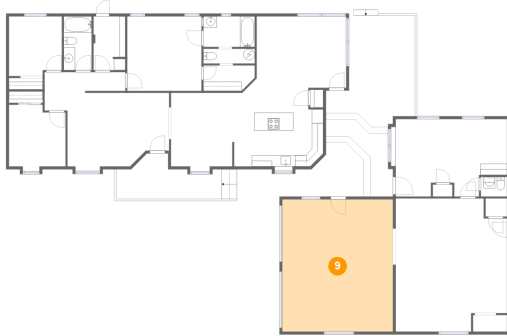
Max Dimensions: 4'7" x 3'5"
Calculated Area: 16 sq. ft
Included: Yes

Heated: Yes
Finished: Yes
Enclosed: Yes
Contiguous: Yes
Permitted: Yes
Wet space: Yes
Addition: No
Conversion: No

Home report

1730 Woodland Avenue, Woodburn, Marion County, Oregon,
United States, 97071

9 Floor 1 - Garage



Max Dimensions: 19'6" x 23'3"
Calculated Area: 453 sq. ft
Included: No

Heated: No
Finished: No
Enclosed: Yes
Contiguous: Yes
Permitted: Yes
Wet space: No
Addition: No
Conversion: No

10 Floor 1 - Bedroom



Max Dimensions: 9'11" x 10'10"
Calculated Area: 103 sq. ft
Included: Yes

Heated: Yes
Finished: Yes
Enclosed: Yes
Contiguous: Yes
Permitted: Yes
Wet space: No
Addition: No
Conversion: No

11 Floor 1 - W.I.C.



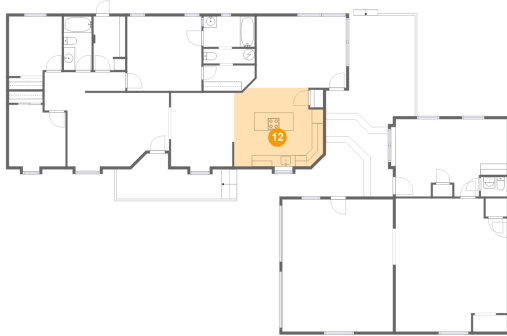
Max Dimensions: 9'1" x 4'5"
Calculated Area: 38 sq. ft
Included: Yes

Heated: Yes
Finished: Yes
Enclosed: Yes
Contiguous: Yes
Permitted: Yes
Wet space: No
Addition: No
Conversion: No

Home report

1730 Woodland Avenue, Woodburn, Marion County, Oregon,
United States, 97071

12 Floor 1 - Kitchen



Max Dimensions: 15'8" x 13'10"
Calculated Area: 203 sq. ft
Included: Yes

Heated: Yes
Finished: Yes
Enclosed: Yes
Contiguous: Yes
Permitted: Yes
Wet space: No
Addition: No
Conversion: No

13 Floor 1 - Room



Max Dimensions: 19'7" x 13'8"
Calculated Area: 244 sq. ft
Included: Yes

Heated: Yes
Finished: Yes
Enclosed: Yes
Contiguous: Yes
Permitted: Yes
Wet space: No
Addition: No
Conversion: No

14 Floor 1 - Utility

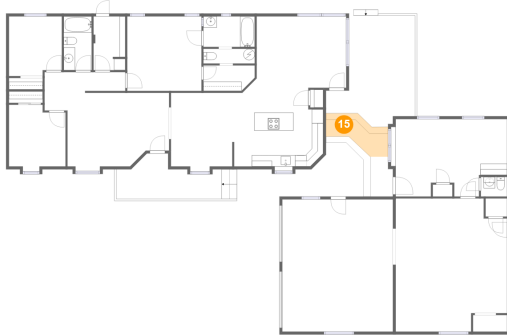


Max Dimensions: 5'7" x 9'6"
Calculated Area: 52 sq. ft
Included: Yes

Heated: Yes
Finished: Yes
Enclosed: Yes
Contiguous: Yes
Permitted: Yes
Wet space: No
Addition: No
Conversion: No

1730 Woodland Avenue, Woodburn, Marion County, Oregon,
United States, 97071

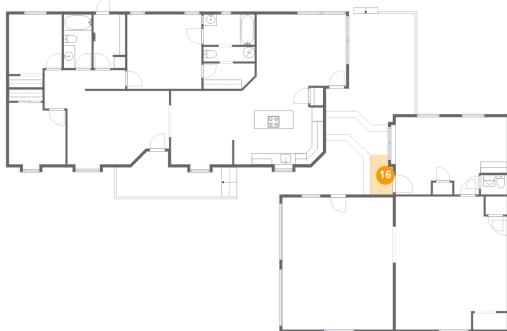
15 Floor 1 - Deck



Max Dimensions: 11'8" x 3'3"
Calculated Area: 53 sq. ft
Included: No

Heated: No
Finished: Yes
Enclosed: No
Contiguous: Yes
Permitted: Yes
Wet space: No
Addition: No
Conversion: No

16 Floor 1 - Porch



Max Dimensions: 3'11" x 7'0"
Calculated Area: 26 sq. ft
Included: No

Heated: No
Finished: Yes
Enclosed: No
Contiguous: Yes
Permitted: Yes
Wet space: No
Addition: No
Conversion: No

17 Floor 1 - Deck



Max Dimensions: 14'9" x 9'6"
Calculated Area: 119 sq. ft
Included: No

Heated: No
Finished: Yes
Enclosed: No
Contiguous: Yes
Permitted: Yes
Wet space: No
Addition: No
Conversion: No

1730 Woodland Avenue, Woodburn, Marion County, Oregon,
United States, 97071

18 Floor 1 - WC



Max Dimensions: 9'1" x 2'7"
Calculated Area: 23 sq. ft
Included: Yes

Heated: Yes
Finished: Yes
Enclosed: Yes
Contiguous: Yes
Permitted: Yes
Wet space: No
Addition: No
Conversion: No

19 Floor 1 - Bath



Max Dimensions: 4'11" x 9'6"
Calculated Area: 47 sq. ft
Included: Yes

Heated: Yes
Finished: Yes
Enclosed: Yes
Contiguous: Yes
Permitted: Yes
Wet space: Yes
Addition: No
Conversion: No

20 Floor 1 - Deck

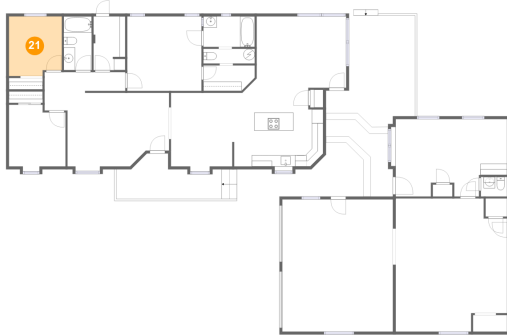


Max Dimensions: 15'8" x 19'1"
Calculated Area: 230 sq. ft
Included: No

Heated: No
Finished: Yes
Enclosed: No
Contiguous: Yes
Permitted: Yes
Wet space: No
Addition: No
Conversion: No

1730 Woodland Avenue, Woodburn, Marion County, Oregon,
United States, 97071

21 Floor 1 - Bedroom



Max Dimensions: 9'4" x 10'6"
Calculated Area: 94 sq. ft
Included: Yes

Heated: Yes
Finished: Yes
Enclosed: Yes
Contiguous: Yes
Permitted: Yes
Wet space: No
Addition: No
Conversion: No

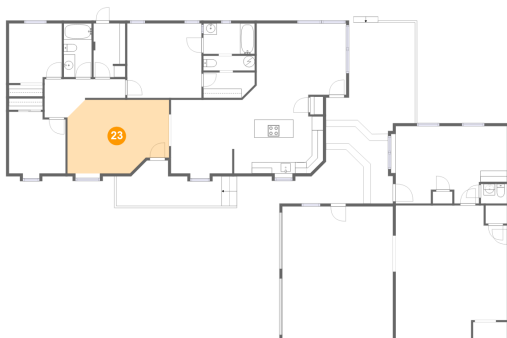
22 Floor 1 - Family Room



Max Dimensions: 17'3" x 12'6"
Calculated Area: 200 sq. ft
Included: Yes

Heated: Yes
Finished: Yes
Enclosed: Yes
Contiguous: Yes
Permitted: Yes
Wet space: No
Addition: No
Conversion: No

23 Floor 1 - Living Room



Max Dimensions: 17'10" x 12'11"
Calculated Area: 212 sq. ft
Included: Yes

Heated: Yes
Finished: Yes
Enclosed: Yes
Contiguous: Yes
Permitted: Yes
Wet space: No
Addition: No
Conversion: No

1730 Woodland Avenue, Woodburn, Marion County, Oregon,
United States, 97071

24 Floor 1 - Hall



Max Dimensions: 14'2" x 6'9"
Calculated Area: 68 sq. ft
Included: Yes

Heated: Yes
Finished: Yes
Enclosed: Yes
Contiguous: Yes
Permitted: Yes
Wet space: No
Addition: No
Conversion: No