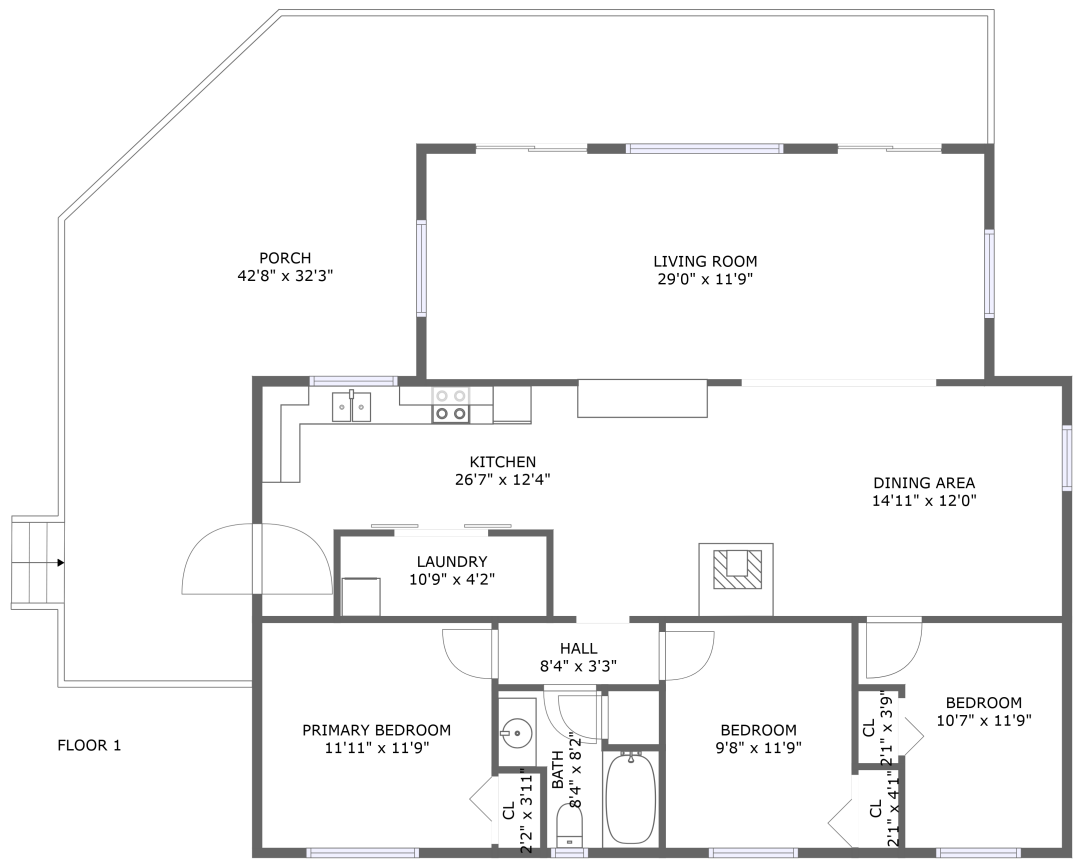




Home report


179 Long Island,Bailieboro,ON,CA





Property summary


**0** Garages


**3** Bedrooms

**1** Bathrooms

**0** Half baths

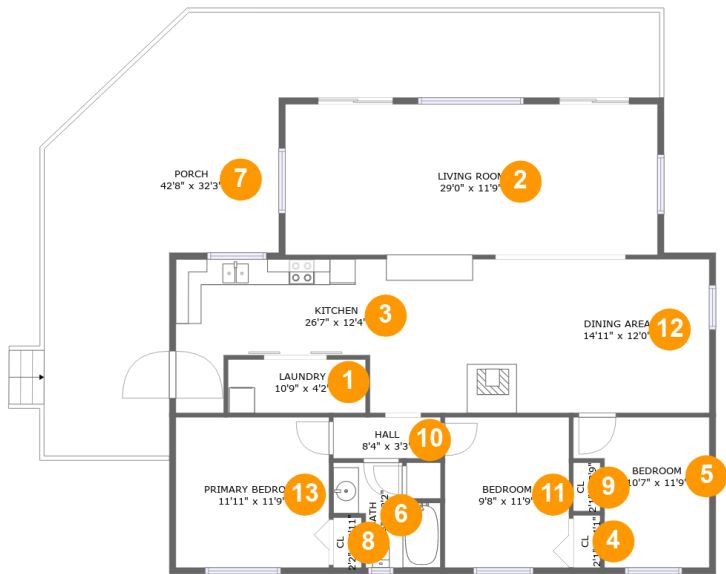
**1** Floors

**1,427** Gross living area sqft

**2,061** Total sqft

Home report

179 Long Island,Bailieboro,ON,CA



Room dimensions

Floor 1 Total sqft: 2061 Living area: 1427

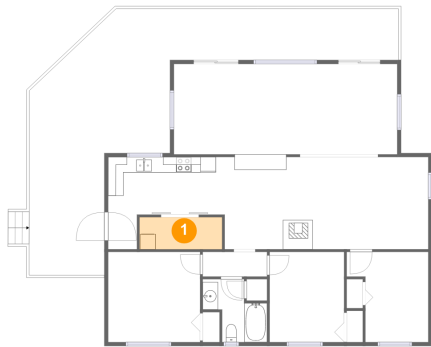
#		Dimensions	sqft	Counted as living area
1	Laundry	10'9" x 4'2"	45 sq. ft	Yes
2	Living Room	29'0" x 11'9"	340 sq. ft	Yes
3	Kitchen	26'7" x 12'4"	269 sq. ft	Yes
4	Cl	2'1" x 4'1"	9 sq. ft	Yes
5	Bedroom	10'7" x 11'9"	103 sq. ft	Yes
6	Bath	8'4" x 8'2"	48 sq. ft	Yes
7	Porch	42'8" x 32'3"	634 sq. ft	No
8	Cl	2'2" x 3'11"	9 sq. ft	Yes
9	Cl	2'1" x 3'9"	8 sq. ft	Yes
10	Hall	8'4" x 3'3"	27 sq. ft	Yes
11	Bedroom	9'8" x 11'9"	113 sq. ft	Yes

Home report

179 Long Island,Bailieboro,ON,CA

#		Dimensions	sqft	Counted as living area
12	Dining Area	14'11" x 12'0"	180 sq. ft	Yes
13	Primary Bedroom	11'11" x 11'9"	140 sq. ft	Yes

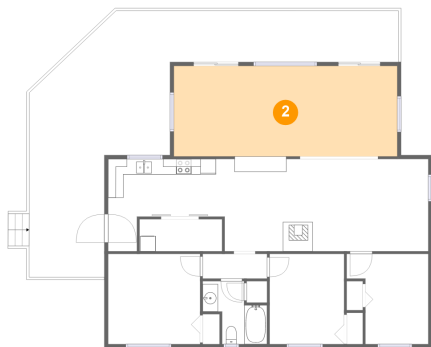
1 Floor 1 - Laundry



Dimensions: 10'9" x 4'2"
Area: 45 sq. ft
Counted as living area: Yes

Heated: Yes
Finished: Yes
Enclosed: Yes
Contiguous: Yes
Permitted: Yes
Wet space: No
Addition: No
Conversion: No

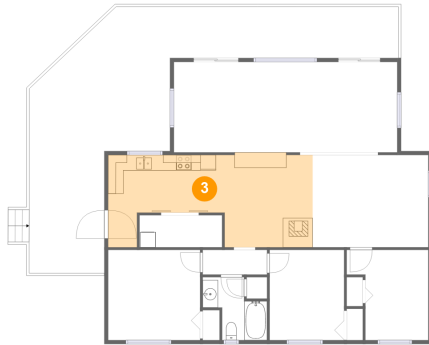
2 Floor 1 - Living Room



Dimensions: 29'0" x 11'9"
Area: 340 sq. ft
Counted as living area: Yes

Heated: Yes
Finished: Yes
Enclosed: Yes
Contiguous: Yes
Permitted: Yes
Wet space: No
Addition: No
Conversion: No

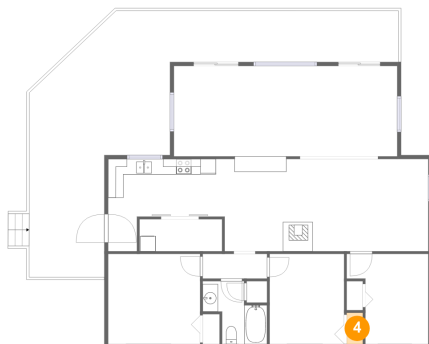
3 Floor 1 - Kitchen



Dimensions: 26'7" x 12'4"
Area: 269 sq. ft
Counted as living area: Yes

Heated: Yes
Finished: Yes
Enclosed: Yes
Contiguous: Yes
Permitted: Yes
Wet space: No
Addition: No
Conversion: No

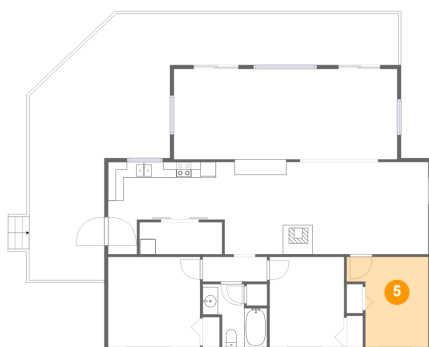
4 Floor 1 - Cl



Dimensions: 2'1" x 4'1"
Area: 9 sq. ft
Counted as living area: Yes

Heated: Yes
Finished: Yes
Enclosed: Yes
Contiguous: Yes
Permitted: Yes
Wet space: No
Addition: No
Conversion: No

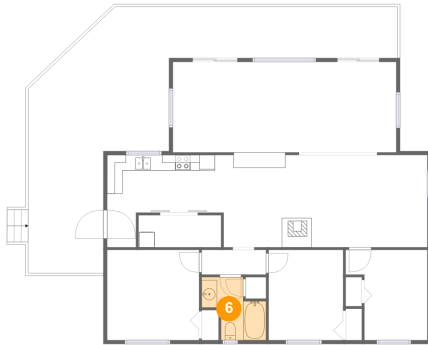
5 Floor 1 - Bedroom



Dimensions: 10'7" x 11'9"
Area: 103 sq. ft
Counted as living area: Yes

Heated: Yes
Finished: Yes
Enclosed: Yes
Contiguous: Yes
Permitted: Yes
Wet space: No
Addition: No
Conversion: No

6 Floor 1 - Bath



Dimensions: 8'4" x 8'2"
Area: 48 sq. ft
Counted as living area: Yes

Heated: Yes
Finished: Yes
Enclosed: Yes
Contiguous: Yes
Permitted: Yes
Wet space: Yes
Addition: No
Conversion: No

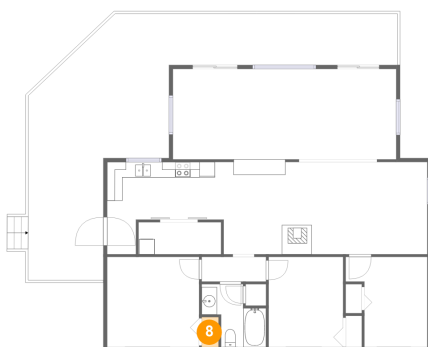
7 Floor 1 - Porch



Dimensions: 42'8" x 32'3"
Area: 634 sq. ft
Counted as living area: No

Heated: No
Finished: Yes
Enclosed: No
Contiguous: Yes
Permitted: Yes
Wet space: No
Addition: No
Conversion: No

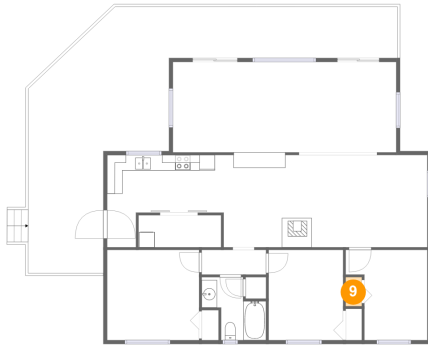
8 Floor 1 - Cl



Dimensions: 2'2" x 3'11"
Area: 9 sq. ft
Counted as living area: Yes

Heated: Yes
Finished: Yes
Enclosed: Yes
Contiguous: Yes
Permitted: Yes
Wet space: No
Addition: No
Conversion: No

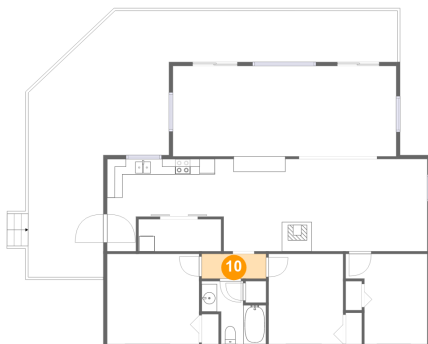
9 Floor 1 - Cl



Dimensions: 2'1" x 3'9"
Area: 8 sq. ft
Counted as living area: Yes

Heated: Yes
Finished: Yes
Enclosed: Yes
Contiguous: Yes
Permitted: Yes
Wet space: No
Addition: No
Conversion: No

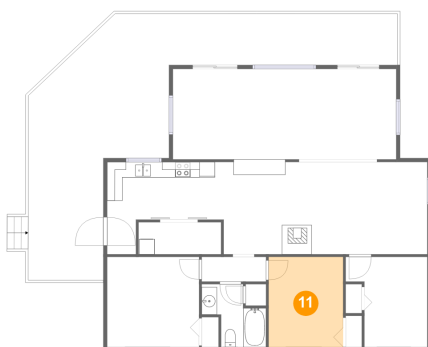
10 Floor 1 - Hall



Dimensions: 8'4" x 3'3"
Area: 27 sq. ft
Counted as living area: Yes

Heated: Yes
Finished: Yes
Enclosed: Yes
Contiguous: Yes
Permitted: Yes
Wet space: No
Addition: No
Conversion: No

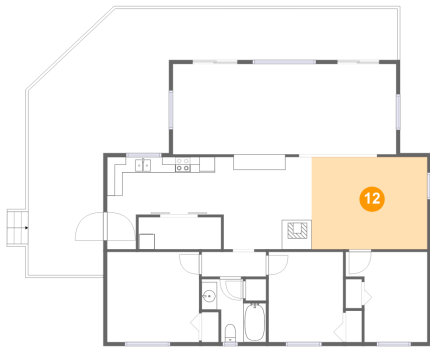
11 Floor 1 - Bedroom



Dimensions: 9'8" x 11'9"
Area: 113 sq. ft
Counted as living area: Yes

Heated: Yes
Finished: Yes
Enclosed: Yes
Contiguous: Yes
Permitted: Yes
Wet space: No
Addition: No
Conversion: No

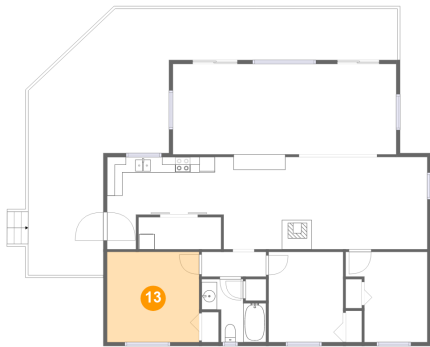
12 Floor 1 - Dining Area



Dimensions: 14'11" x 12'0"
Area: 180 sq. ft
Counted as living area: Yes

Heated: Yes
Finished: Yes
Enclosed: Yes
Contiguous: Yes
Permitted: Yes
Wet space: No
Addition: No
Conversion: No

13 Floor 1 - Primary Bedroom



Dimensions: 11'11" x 11'9"
Area: 140 sq. ft
Counted as living area: Yes

Heated: Yes
Finished: Yes
Enclosed: Yes
Contiguous: Yes
Permitted: Yes
Wet space: No
Addition: No
Conversion: No