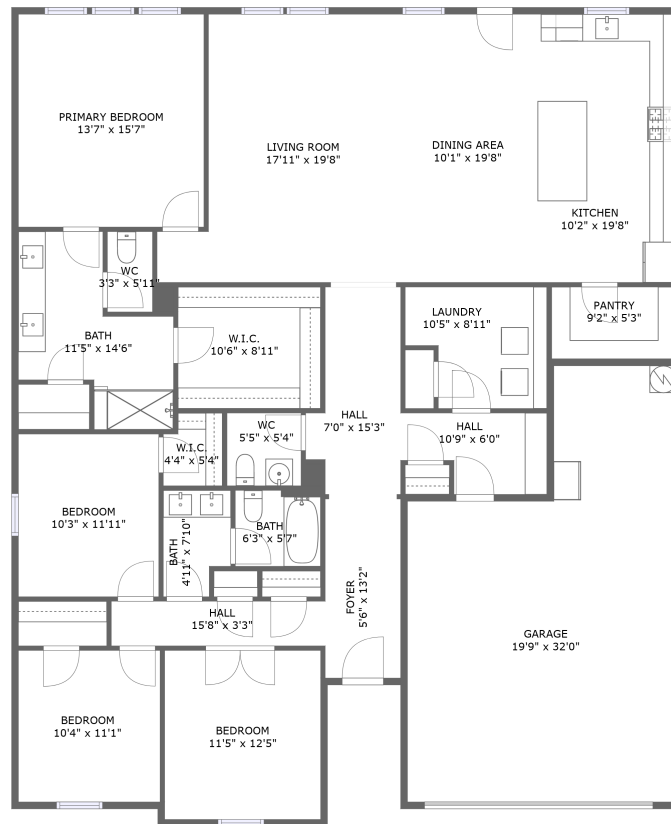


Home report

# 656 Cari Lane, Forney, TX, US



FLOOR 1

**Total Area: 2202 sq. ft**

Floor 1: 2202 sq. ft

Excluded: Garage 526 sq. ft, Walls: 137 sq. ft

## Property summary


 **1** Floors

 **4** Bedrooms

 **2** Bathrooms

Home report

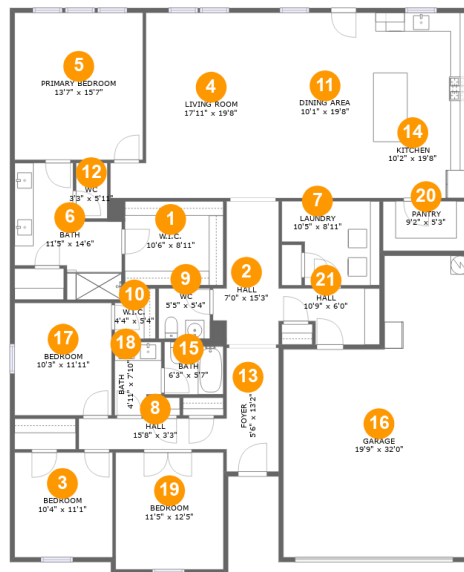
**656 Cari Lane, Forney, TX, US**

 **1**  
Half baths

 **1**  
Garages

Home report

# 656 Cari Lane, Forney, TX, US



## Room dimensions

Floor 1

Total: 2202 sqft

Excluded: 526 sqft

#		Max Dimensions	sqft	Included
1	W.I.C.	10'6" x 8'11"	93 sq. ft	Yes
2	Hall	7'0" x 15'3"	89 sq. ft	Yes
3	Bedroom	10'4" x 11'1"	116 sq. ft	Yes
4	Living Room	17'11" x 19'8"	292 sq. ft	Yes
5	Primary Bedroom	13'7" x 15'7"	213 sq. ft	Yes
6	Bath	11'5" x 14'6"	113 sq. ft	Yes
7	Laundry	10'5" x 8'11"	82 sq. ft	Yes
8	Hall	15'8" x 3'3"	51 sq. ft	Yes
9	WC	5'5" x 5'4"	29 sq. ft	Yes
10	W.I.C.	4'4" x 5'4"	22 sq. ft	Yes
11	Dining Area	10'1" x 19'8"	198 sq. ft	Yes

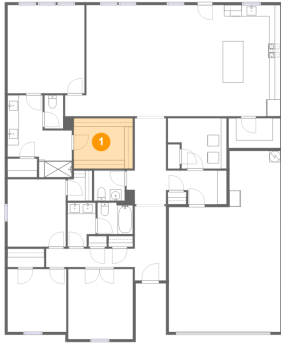
Home report

**656 Cari Lane, Forney, TX, US**

#		Max Dimensions	sqft	Included
12	WC	3'3" x 5'11"	20 sq. ft	Yes
13	Foyer	5'6" x 13'2"	73 sq. ft	Yes
14	Kitchen	10'2" x 19'8"	200 sq. ft	Yes
15	Bath	6'3" x 5'7"	35 sq. ft	Yes
16	Garage	19'9" x 32'0"	526 sq. ft	No
17	Bedroom	10'3" x 11'11"	123 sq. ft	Yes
18	Bath	4'11" x 7'10"	35 sq. ft	Yes
19	Bedroom	11'5" x 12'5"	142 sq. ft	Yes
20	Pantry	9'2" x 5'3"	48 sq. ft	Yes
21	Hall	10'9" x 6'0"	54 sq. ft	Yes

## 1 Floor 1 - W.I.C.

---

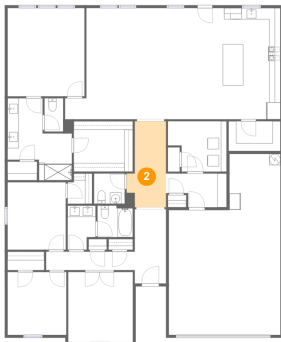


**Max Dimensions:** 10'6" x 8'11"  
**Calculated Area:** 93 sq. ft  
**Included:** Yes

**Heated:** Yes  
**Finished:** Yes  
**Enclosed:** Yes  
**Contiguous:** Yes  
**Permitted:** Yes  
**Wet space:** No  
**Addition:** No  
**Conversion:** No

## 2 Floor 1 - Hall

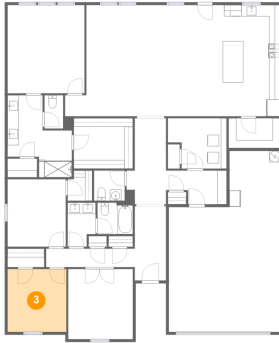
---



**Max Dimensions:** 7'0" x 15'3"  
**Calculated Area:** 89 sq. ft  
**Included:** Yes

**Heated:** Yes  
**Finished:** Yes  
**Enclosed:** Yes  
**Contiguous:** Yes  
**Permitted:** Yes  
**Wet space:** No  
**Addition:** No  
**Conversion:** No

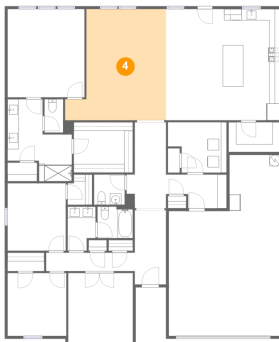
### 3 Floor 1 - Bedroom



Max Dimensions: 10'4" x 11'1"  
Calculated Area: 116 sq. ft  
Included: Yes

Heated: Yes  
Finished: Yes  
Enclosed: Yes  
Contiguous: Yes  
Permitted: Yes  
Wet space: No  
Addition: No  
Conversion: No

### 4 Floor 1 - Living Room



Max Dimensions: 17'11" x 19'8"  
Calculated Area: 292 sq. ft  
Included: Yes

Heated: Yes  
Finished: Yes  
Enclosed: Yes  
Contiguous: Yes  
Permitted: Yes  
Wet space: No  
Addition: No  
Conversion: No

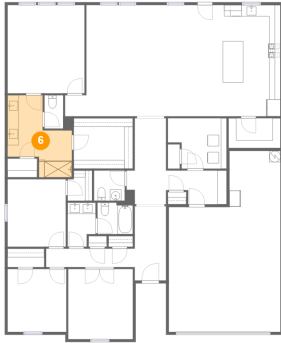
### 5 Floor 1 - Primary Bedroom



Max Dimensions: 13'7" x 15'7"  
Calculated Area: 213 sq. ft  
Included: Yes

Heated: Yes  
Finished: Yes  
Enclosed: Yes  
Contiguous: Yes  
Permitted: Yes  
Wet space: No  
Addition: No  
Conversion: No

## 6 Floor 1 - Bath



Max Dimensions: 11'5" x 14'6"  
Calculated Area: 113 sq. ft  
Included: Yes

Heated: Yes  
Finished: Yes  
Enclosed: Yes  
Contiguous: Yes  
Permitted: Yes  
Wet space: Yes  
Addition: No  
Conversion: No

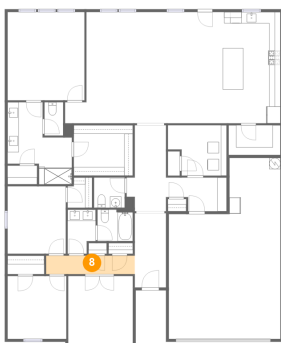
## 7 Floor 1 - Laundry



Max Dimensions: 10'5" x 8'11"  
Calculated Area: 82 sq. ft  
Included: Yes

Heated: Yes  
Finished: Yes  
Enclosed: Yes  
Contiguous: Yes  
Permitted: Yes  
Wet space: No  
Addition: No  
Conversion: No

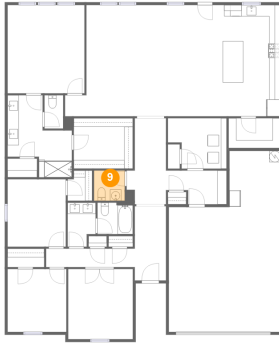
## 8 Floor 1 - Hall



Max Dimensions: 15'8" x 3'3"  
Calculated Area: 51 sq. ft  
Included: Yes

Heated: Yes  
Finished: Yes  
Enclosed: Yes  
Contiguous: Yes  
Permitted: Yes  
Wet space: No  
Addition: No  
Conversion: No

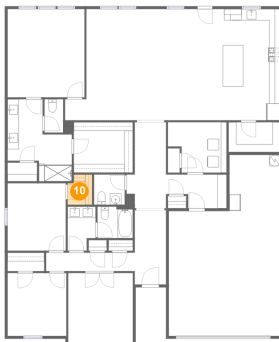
**9** Floor 1 - WC



Max Dimensions: 5'5" x 5'4"  
Calculated Area: 29 sq. ft  
Included: Yes

Heated: Yes  
Finished: Yes  
Enclosed: Yes  
Contiguous: Yes  
Permitted: Yes  
Wet space: Yes  
Addition: No  
Conversion: No

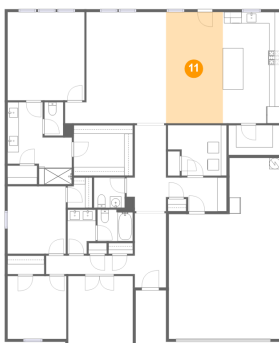
**10** Floor 1 - W.I.C.



Max Dimensions: 4'4" x 5'4"  
Calculated Area: 22 sq. ft  
Included: Yes

Heated: Yes  
Finished: Yes  
Enclosed: Yes  
Contiguous: Yes  
Permitted: Yes  
Wet space: No  
Addition: No  
Conversion: No

**11** Floor 1 - Dining Area



Max Dimensions: 10'1" x 19'8"  
Calculated Area: 198 sq. ft  
Included: Yes

Heated: Yes  
Finished: Yes  
Enclosed: Yes  
Contiguous: Yes  
Permitted: Yes  
Wet space: No  
Addition: No  
Conversion: No

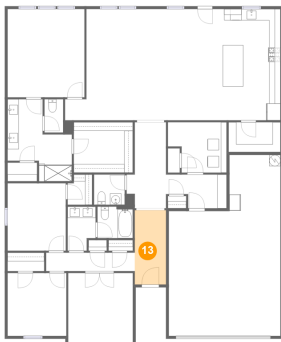
**12** Floor 1 - WC



Max Dimensions: 3'3" x 5'11"  
Calculated Area: 20 sq. ft  
Included: Yes

Heated: Yes  
Finished: Yes  
Enclosed: Yes  
Contiguous: Yes  
Permitted: Yes  
Wet space: Yes  
Addition: No  
Conversion: No

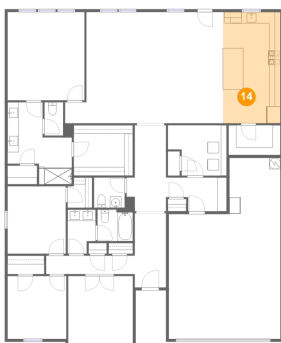
**13** Floor 1 - Foyer



Max Dimensions: 5'6" x 13'2"  
Calculated Area: 73 sq. ft  
Included: Yes

Heated: Yes  
Finished: Yes  
Enclosed: Yes  
Contiguous: Yes  
Permitted: Yes  
Wet space: No  
Addition: No  
Conversion: No

**14** Floor 1 - Kitchen



Max Dimensions: 10'2" x 19'8"  
Calculated Area: 200 sq. ft  
Included: Yes

Heated: Yes  
Finished: Yes  
Enclosed: Yes  
Contiguous: Yes  
Permitted: Yes  
Wet space: No  
Addition: No  
Conversion: No

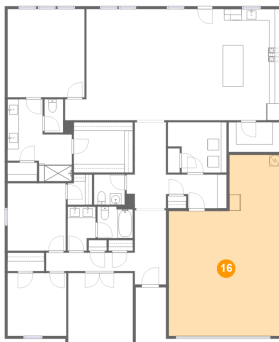
**15** Floor 1 - Bath



Max Dimensions: 6'3" x 5'7"  
Calculated Area: 35 sq. ft  
Included: Yes

Heated: Yes  
Finished: Yes  
Enclosed: Yes  
Contiguous: Yes  
Permitted: Yes  
Wet space: Yes  
Addition: No  
Conversion: No

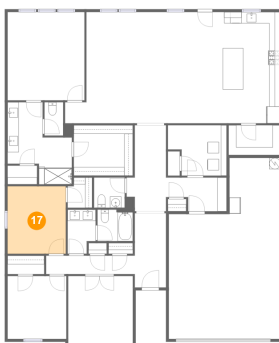
**16** Floor 1 - Garage



Max Dimensions: 19'9" x 32'0"  
Calculated Area: 526 sq. ft  
Included: No

Heated: No  
Finished: No  
Enclosed: Yes  
Contiguous: Yes  
Permitted: Yes  
Wet space: No  
Addition: No  
Conversion: No

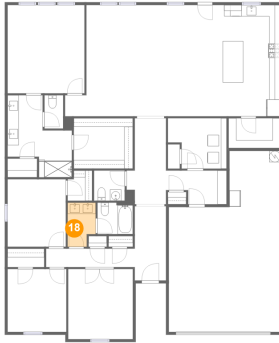
**17** Floor 1 - Bedroom



Max Dimensions: 10'3" x 11'11"  
Calculated Area: 123 sq. ft  
Included: Yes

Heated: Yes  
Finished: Yes  
Enclosed: Yes  
Contiguous: Yes  
Permitted: Yes  
Wet space: No  
Addition: No  
Conversion: No

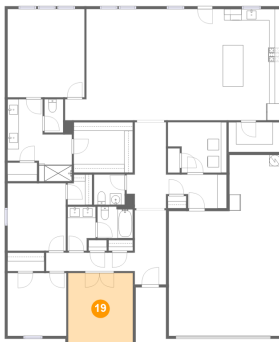
**18** Floor 1 - Bath



Max Dimensions: 4'11" x 7'10"  
Calculated Area: 35 sq. ft  
Included: Yes

Heated: Yes  
Finished: Yes  
Enclosed: Yes  
Contiguous: Yes  
Permitted: Yes  
Wet space: Yes  
Addition: No  
Conversion: No

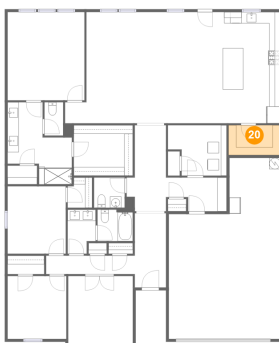
**19** Floor 1 - Bedroom



Max Dimensions: 11'5" x 12'5"  
Calculated Area: 142 sq. ft  
Included: Yes

Heated: Yes  
Finished: Yes  
Enclosed: Yes  
Contiguous: Yes  
Permitted: Yes  
Wet space: No  
Addition: No  
Conversion: No

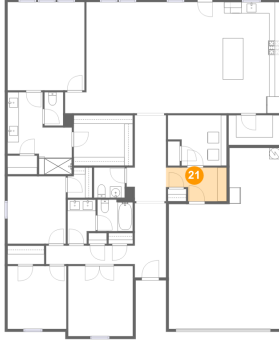
**20** Floor 1 - Pantry



Max Dimensions: 9'2" x 5'3"  
Calculated Area: 48 sq. ft  
Included: Yes

Heated: Yes  
Finished: Yes  
Enclosed: Yes  
Contiguous: Yes  
Permitted: Yes  
Wet space: No  
Addition: No  
Conversion: No

**21** Floor 1 - Hall



**Max Dimensions:** 10'9" x 6'0"  
**Calculated Area:** 54 sq. ft  
**Included:** Yes

**Heated:** Yes  
**Finished:** Yes  
**Enclosed:** Yes  
**Contiguous:** Yes  
**Permitted:** Yes  
**Wet space:** No  
**Addition:** No  
**Conversion:** No