

Home report

30 Bert G. Argue Drive, Stittsville, Stittsville, Ontario, Canada,
K2S 1X9



Total Area: 1727 sq. ft

Below Ground: 729 sq. ft, Floor 2: 1727 sq. ft

Excluded: Undefined 51 sq. ft, Basement 816 sq. ft, Balcony 120 sq. ft, Fireplace 9 sq. ft,
Walls: 185 sq. ft

Property summary

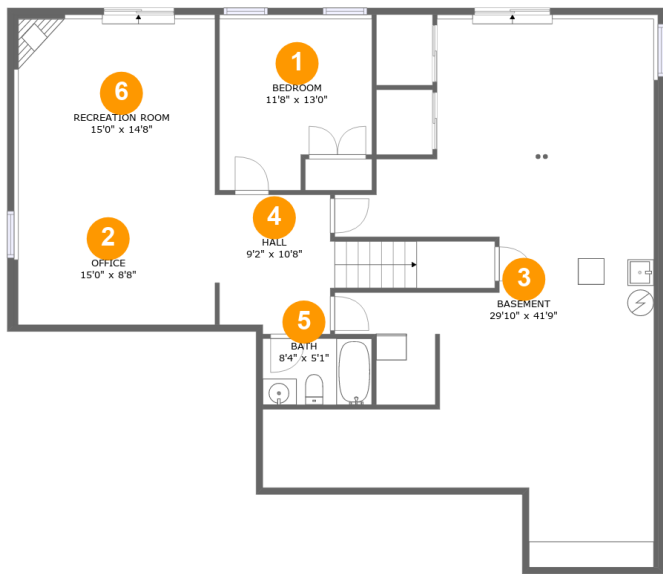
 **2** Floors

 **3** Bedrooms

 **3** Bathrooms

Home report

30 Bert G. Argue Drive, Stittsville, Stittsville, Ontario, Canada,
K2S 1X9



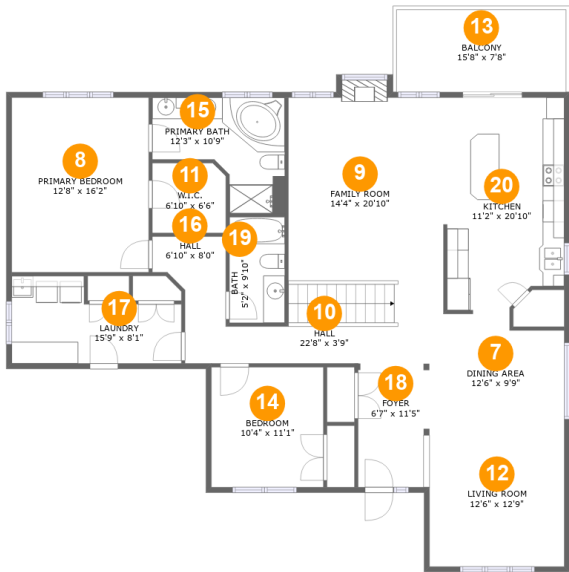
Room dimensions

Floor 1 Below ground Total:729sqft Excluded: 867sqft

#		Max Dimensions	sqft	Included
1	Bedroom	11'8" x 13'0"	141 sq. ft	Yes
2	Office	15'0" x 8'8"	133 sq. ft	Yes
3	Basement	29'10" x 41'9"	813 sq. ft	No
4	Hall	9'2" x 10'8"	135 sq. ft	Yes
5	Bath	8'4" x 5'1"	42 sq. ft	Yes
6	Recreation Room	15'0" x 14'8"	230 sq. ft	Yes

Home report

30 Bert G. Argue Drive, Stittsville, Stittsville, Ontario, Canada,
K2S 1X9



Room dimensions

Floor 2 Total:1727sqft Excluded: 129sqft

#		Max Dimensions	sqft	Included
7	Dining Area	12'6" x 9'9"	119 sq. ft	Yes
8	Primary Bedroom	12'8" x 16'2"	205 sq. ft	Yes
9	Family Room	14'4" x 20'10"	306 sq. ft	Yes
10	Hall	22'8" x 3'9"	83 sq. ft	Yes
11	W.I.C.	6'10" x 6'6"	43 sq. ft	Yes
12	Living Room	12'6" x 12'9"	159 sq. ft	Yes
13	Balcony	15'8" x 7'8"	120 sq. ft	No
14	Bedroom	10'4" x 11'1"	115 sq. ft	Yes
15	Primary Bath	12'3" x 10'9"	97 sq. ft	Yes
16	Hall	6'10" x 8'0"	42 sq. ft	Yes
17	Laundry	15'9" x 8'1"	104 sq. ft	Yes

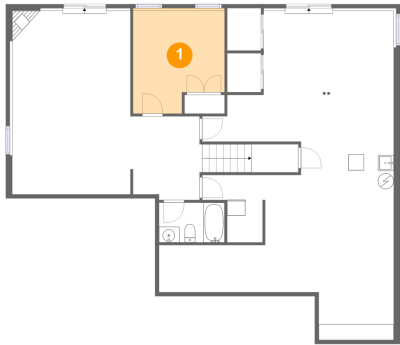
Home report

30 Bert G. Argue Drive, Stittsville, Stittsville, Ontario, Canada,
K2S 1X9

#		Max Dimensions	sqft	Included
18	Foyer	6'7" x 11'5"	76 sq. ft	Yes
19	Bath	5'2" x 9'10"	50 sq. ft	Yes
20	Kitchen	11'2" x 20'10"	218 sq. ft	Yes

30 Bert G. Argue Drive, Stittsville, Stittsville, Ontario, Canada,
K2S 1X9

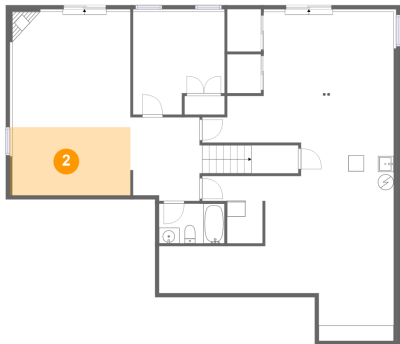
1 Floor 1 - Bedroom



Max Dimensions: 11'8" x 13'0"
Calculated Area: 141 sq. ft
Included: Yes

Heated: Yes
Finished: Yes
Enclosed: Yes
Contiguous: Yes
Permitted: Yes
Wet space: No
Addition: No
Conversion: No

2 Floor 1 - Office

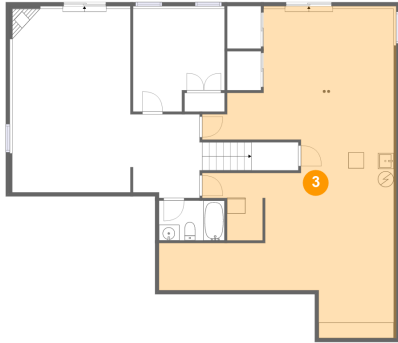


Max Dimensions: 15'0" x 8'8"
Calculated Area: 133 sq. ft
Included: Yes

Heated: Yes
Finished: Yes
Enclosed: Yes
Contiguous: Yes
Permitted: Yes
Wet space: No
Addition: No
Conversion: No

30 Bert G. Argue Drive, Stittsville, Stittsville, Ontario, Canada,
K2S 1X9

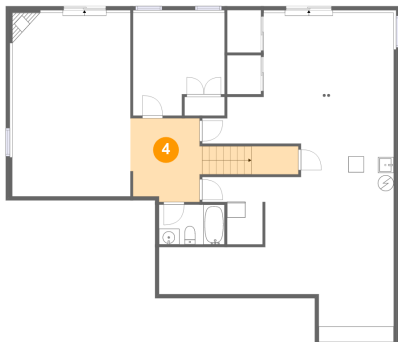
3 Floor 1 - Basement



Max Dimensions: 29'10" x 41'9"
Calculated Area: 813 sq. ft
Included: No

Heated: Yes
Finished: No
Enclosed: Yes
Contiguous: Yes
Permitted: Yes
Wet space: No
Addition: No
Conversion: No

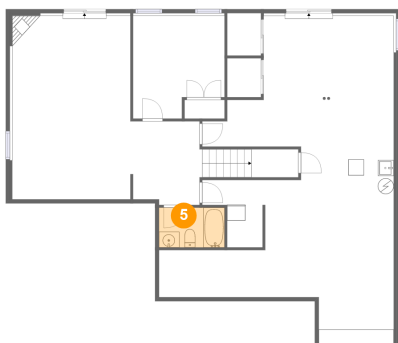
4 Floor 1 - Hall



Max Dimensions: 9'2" x 10'8"
Calculated Area: 135 sq. ft
Included: Yes

Heated: Yes
Finished: Yes
Enclosed: Yes
Contiguous: Yes
Permitted: Yes
Wet space: No
Addition: No
Conversion: No

5 Floor 1 - Bath

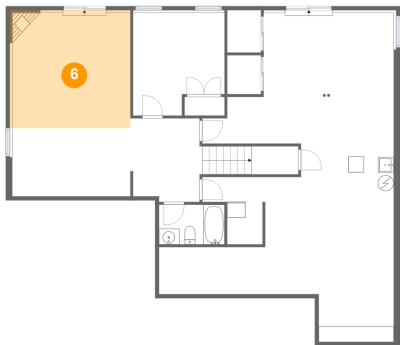


Max Dimensions: 8'4" x 5'1"
Calculated Area: 42 sq. ft
Included: Yes

Heated: Yes
Finished: Yes
Enclosed: Yes
Contiguous: Yes
Permitted: Yes
Wet space: Yes
Addition: No
Conversion: No

30 Bert G. Argue Drive, Stittsville, Stittsville, Ontario, Canada,
K2S 1X9

6 Floor 1 - Recreation Room



Max Dimensions: 15'0" x 14'8"
Calculated Area: 230 sq. ft
Included: Yes

Heated: Yes
Finished: Yes
Enclosed: Yes
Contiguous: Yes
Permitted: Yes
Wet space: No
Addition: No
Conversion: No

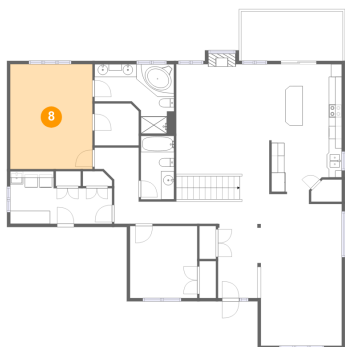
7 Floor 2 - Dining Area



Max Dimensions: 12'6" x 9'9"
Calculated Area: 119 sq. ft
Included: Yes

Heated: Yes
Finished: Yes
Enclosed: Yes
Contiguous: Yes
Permitted: Yes
Wet space: No
Addition: No
Conversion: No

8 Floor 2 - Primary Bedroom

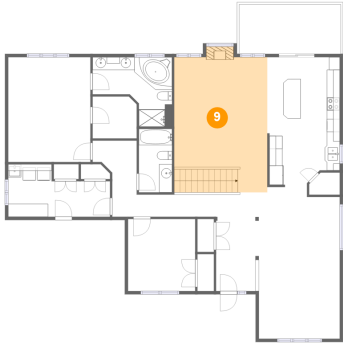


Max Dimensions: 12'8" x 16'2"
Calculated Area: 205 sq. ft
Included: Yes

Heated: Yes
Finished: Yes
Enclosed: Yes
Contiguous: Yes
Permitted: Yes
Wet space: No
Addition: No
Conversion: No

30 Bert G. Argue Drive, Stittsville, Stittsville, Ontario, Canada,
K2S 1X9

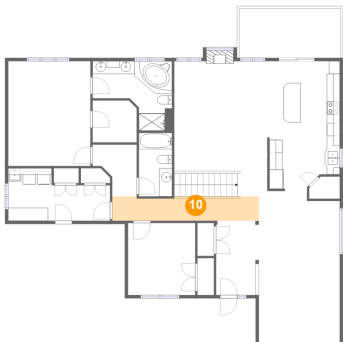
9 Floor 2 - Family Room



Max Dimensions: 14'4" x 20'10"
Calculated Area: 306 sq. ft
Included: Yes

Heated: Yes
Finished: Yes
Enclosed: Yes
Contiguous: Yes
Permitted: Yes
Wet space: No
Addition: No
Conversion: No

10 Floor 2 - Hall



Max Dimensions: 22'8" x 3'9"
Calculated Area: 83 sq. ft
Included: Yes

Heated: Yes
Finished: Yes
Enclosed: Yes
Contiguous: Yes
Permitted: Yes
Wet space: No
Addition: No
Conversion: No

11 Floor 2 - W.I.C.



Max Dimensions: 6'10" x 6'6"
Calculated Area: 43 sq. ft
Included: Yes

Heated: Yes
Finished: Yes
Enclosed: Yes
Contiguous: Yes
Permitted: Yes
Wet space: No
Addition: No
Conversion: No

30 Bert G. Argue Drive, Stittsville, Stittsville, Ontario, Canada,
K2S 1X9

12 Floor 2 - Living Room



Max Dimensions: 12'6" x 12'9"
Calculated Area: 159 sq. ft
Included: Yes

Heated: Yes
Finished: Yes
Enclosed: Yes
Contiguous: Yes
Permitted: Yes
Wet space: No
Addition: No
Conversion: No

13 Floor 2 - Balcony



Max Dimensions: 15'8" x 7'8"
Calculated Area: 120 sq. ft
Included: No

Heated: No
Finished: Yes
Enclosed: No
Contiguous: Yes
Permitted: Yes
Wet space: No
Addition: No
Conversion: No

14 Floor 2 - Bedroom

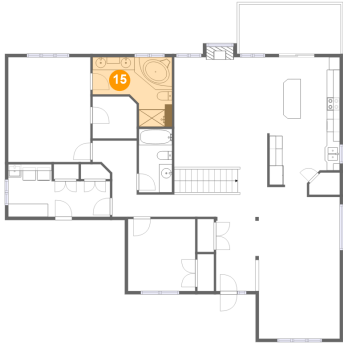


Max Dimensions: 10'4" x 11'1"
Calculated Area: 115 sq. ft
Included: Yes

Heated: Yes
Finished: Yes
Enclosed: Yes
Contiguous: Yes
Permitted: Yes
Wet space: No
Addition: No
Conversion: No

30 Bert G. Argue Drive, Stittsville, Stittsville, Ontario, Canada,
K2S 1X9

15 Floor 2 - Primary Bath



Max Dimensions: 12'3" x 10'9"
Calculated Area: 97 sq. ft
Included: Yes

Heated: Yes
Finished: Yes
Enclosed: Yes
Contiguous: Yes
Permitted: Yes
Wet space: Yes
Addition: No
Conversion: No

16 Floor 2 - Hall



Max Dimensions: 6'10" x 8'0"
Calculated Area: 42 sq. ft
Included: Yes

Heated: Yes
Finished: Yes
Enclosed: Yes
Contiguous: Yes
Permitted: Yes
Wet space: No
Addition: No
Conversion: No

17 Floor 2 - Laundry



Max Dimensions: 15'9" x 8'1"
Calculated Area: 104 sq. ft
Included: Yes

Heated: Yes
Finished: Yes
Enclosed: Yes
Contiguous: Yes
Permitted: Yes
Wet space: No
Addition: No
Conversion: No

30 Bert G. Argue Drive, Stittsville, Stittsville, Ontario, Canada,
K2S 1X9

18 Floor 2 - Foyer



Max Dimensions: 6'7" x 11'5"
Calculated Area: 76 sq. ft
Included: Yes

Heated: Yes
Finished: Yes
Enclosed: Yes
Contiguous: Yes
Permitted: Yes
Wet space: No
Addition: No
Conversion: No

19 Floor 2 - Bath



Max Dimensions: 5'2" x 9'10"
Calculated Area: 50 sq. ft
Included: Yes

Heated: Yes
Finished: Yes
Enclosed: Yes
Contiguous: Yes
Permitted: Yes
Wet space: Yes
Addition: No
Conversion: No

20 Floor 2 - Kitchen



Max Dimensions: 11'2" x 20'10"
Calculated Area: 218 sq. ft
Included: Yes

Heated: Yes
Finished: Yes
Enclosed: Yes
Contiguous: Yes
Permitted: Yes
Wet space: No
Addition: No
Conversion: No