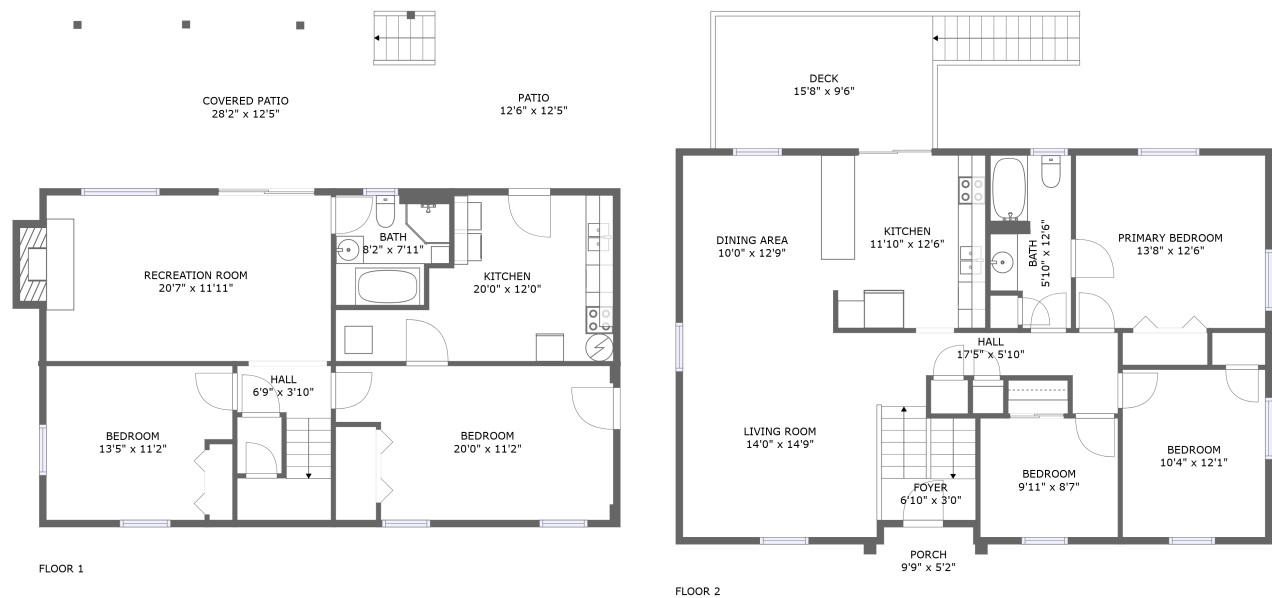


Home report

3716 Bower Road, Windsor West, Cave Spring, Roanoke,
Roanoke County, Virginia, United States, 24018



Total Area: 2059 sq. ft

Floor 1: 838 sq. ft, Floor 2: 1221 sq. ft

Excluded: Kitchen 187 sq. ft, Outdoor Patio 156 sq. ft, Outdoor Patio Covered 351 sq. ft, Fireplace 12 sq. ft, Outdoor Porch 47 sq. ft, Outdoor Deck 150 sq. ft

Property summary

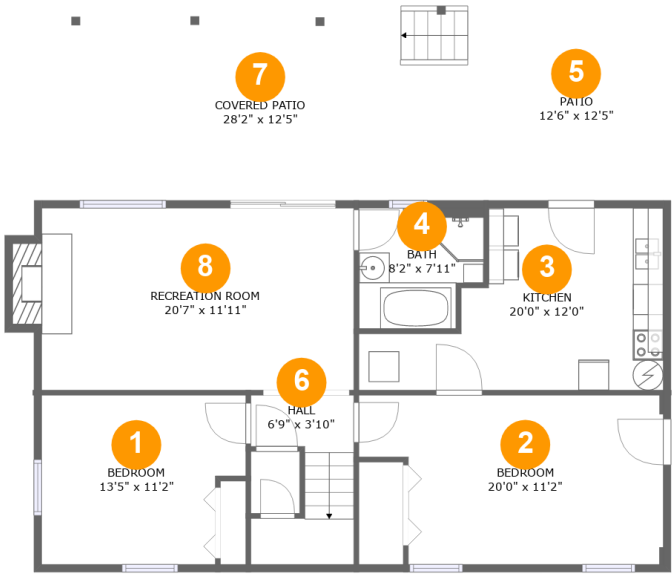
 **2** Floors

 **5** Bedrooms

 **2** Bathrooms

Home report

3716 Bower Road, Windsor West, Cave Spring, Roanoke,
Roanoke County, Virginia, United States, 24018



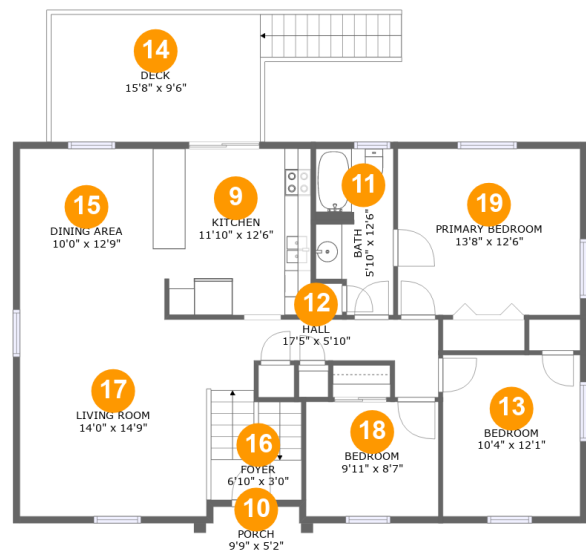
Room dimensions

Floor 1 Total:838sqft Excluded: 706sqft

#		Max Dimensions	sqft	Included
1	Bedroom	13'5" x 11'2"	138 sq. ft	Yes
2	Bedroom	20'0" x 11'2"	200 sq. ft	Yes
3	Kitchen	20'0" x 12'0"	175 sq. ft	No
4	Bath	8'2" x 7'11"	60 sq. ft	Yes
5	Patio	12'6" x 12'5"	156 sq. ft	No
6	Hall	6'9" x 3'10"	59 sq. ft	Yes
7	Covered Patio	28'2" x 12'5"	351 sq. ft	No
8	Recreation Room	20'7" x 11'11"	256 sq. ft	Yes

Home report

3716 Bower Road, Windsor West, Cave Spring, Roanoke,
Roanoke County, Virginia, United States, 24018



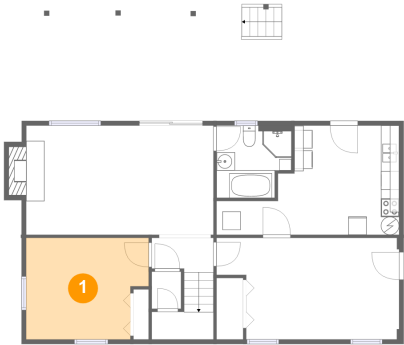
Room dimensions

Floor 2 Total:1221sqft Excluded: 197sqft

#		Max Dimensions	sqft	Included
9	Kitchen	11'10" x 12'6"	147 sq. ft	Yes
10	Porch	9'9" x 5'2"	47 sq. ft	No
11	Bath	5'10" x 12'6"	66 sq. ft	Yes
12	Hall	17'5" x 5'10"	105 sq. ft	Yes
13	Bedroom	10'4" x 12'1"	125 sq. ft	Yes
14	Deck	15'8" x 9'6"	150 sq. ft	No
15	Dining Area	10'0" x 12'9"	128 sq. ft	Yes
16	Foyer	6'10" x 3'0"	21 sq. ft	Yes
17	Living Room	14'0" x 14'9"	207 sq. ft	Yes
18	Bedroom	9'11" x 8'7"	85 sq. ft	Yes
19	Primary Bedroom	13'8" x 12'6"	170 sq. ft	Yes

3716 Bower Road, Windsor West, Cave Spring, Roanoke,
Roanoke County, Virginia, United States, 24018

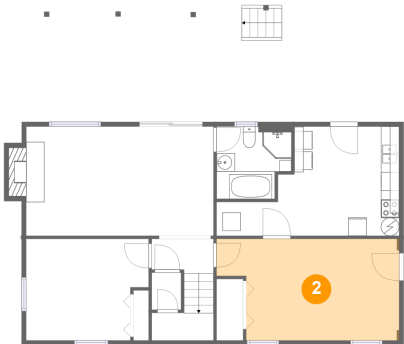
1 Floor 1 - Bedroom



Max Dimensions: 13'5" x 11'2"
Calculated Area: 138 sq. ft
Included: Yes

Heated: Yes
Finished: Yes
Enclosed: Yes
Contiguous: Yes
Permitted: Yes
Wet space: No
Addition: No
Conversion: No

2 Floor 1 - Bedroom



Max Dimensions: 20'0" x 11'2"
Calculated Area: 200 sq. ft
Included: Yes

Heated: Yes
Finished: Yes
Enclosed: Yes
Contiguous: Yes
Permitted: Yes
Wet space: No
Addition: No
Conversion: No

3716 Bower Road, Windsor West, Cave Spring, Roanoke,
Roanoke County, Virginia, United States, 24018

3 Floor 1 - Kitchen



Max Dimensions: 20'0" x 12'0"
Calculated Area: 175 sq. ft
Included: No

Heated: Yes
Finished: No
Enclosed: Yes
Contiguous: Yes
Permitted: Yes
Wet space: No
Addition: No
Conversion: No

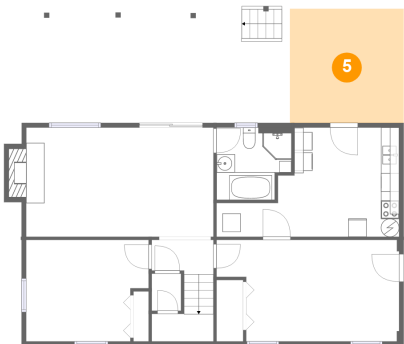
4 Floor 1 - Bath



Max Dimensions: 8'2" x 7'11"
Calculated Area: 60 sq. ft
Included: Yes

Heated: Yes
Finished: Yes
Enclosed: Yes
Contiguous: Yes
Permitted: Yes
Wet space: Yes
Addition: No
Conversion: No

5 Floor 1 - Patio

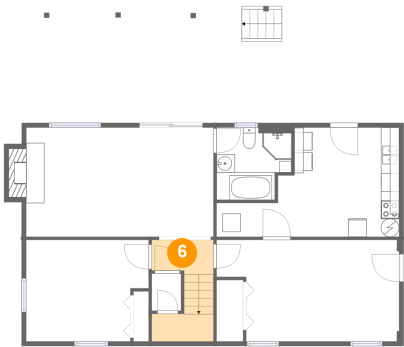


Max Dimensions: 12'6" x 12'5"
Calculated Area: 156 sq. ft
Included: No

Heated: No
Finished: Yes
Enclosed: No
Contiguous: Yes
Permitted: Yes
Wet space: No
Addition: No
Conversion: No

3716 Bower Road, Windsor West, Cave Spring, Roanoke,
Roanoke County, Virginia, United States, 24018

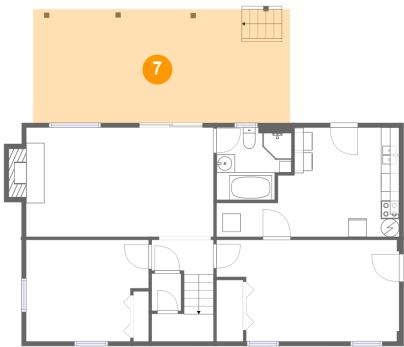
6 Floor 1 - Hall



Max Dimensions: 6'9" x 3'10"
Calculated Area: 59 sq. ft
Included: Yes

Heated: Yes
Finished: Yes
Enclosed: Yes
Contiguous: Yes
Permitted: Yes
Wet space: No
Addition: No
Conversion: No

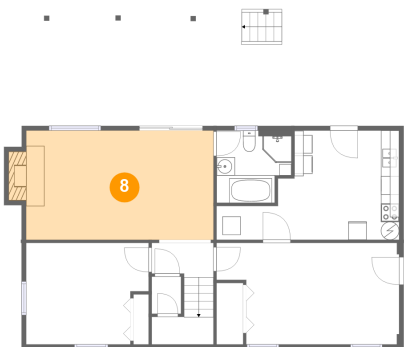
7 Floor 1 - Covered Patio



Max Dimensions: 28'2" x 12'5"
Calculated Area: 351 sq. ft
Included: No

Heated: No
Finished: Yes
Enclosed: No
Contiguous: Yes
Permitted: Yes
Wet space: No
Addition: No
Conversion: No

8 Floor 1 - Recreation Room



Max Dimensions: 20'7" x 11'11"
Calculated Area: 256 sq. ft
Included: Yes

Heated: Yes
Finished: Yes
Enclosed: Yes
Contiguous: Yes
Permitted: Yes
Wet space: No
Addition: No
Conversion: No

3716 Bower Road, Windsor West, Cave Spring, Roanoke,
Roanoke County, Virginia, United States, 24018

9 Floor 2 - Kitchen



Max Dimensions: 11'10" x 12'6"
Calculated Area: 147 sq. ft
Included: Yes

Heated: Yes
Finished: Yes
Enclosed: Yes
Contiguous: Yes
Permitted: Yes
Wet space: No
Addition: No
Conversion: No

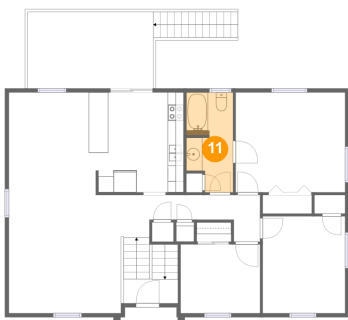
10 Floor 2 - Porch



Max Dimensions: 9'9" x 5'2"
Calculated Area: 47 sq. ft
Included: No

Heated: No
Finished: Yes
Enclosed: No
Contiguous: Yes
Permitted: Yes
Wet space: No
Addition: No
Conversion: No

11 Floor 2 - Bath



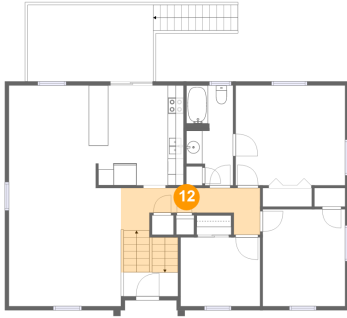
Max Dimensions: 5'10" x 12'6"
Calculated Area: 66 sq. ft
Included: Yes

Heated: Yes
Finished: Yes
Enclosed: Yes
Contiguous: Yes
Permitted: Yes
Wet space: Yes
Addition: No
Conversion: No

Home report

3716 Bower Road, Windsor West, Cave Spring, Roanoke,
Roanoke County, Virginia, United States, 24018

12 Floor 2 - Hall



Max Dimensions: 17'5" x 5'10"
Calculated Area: 105 sq. ft
Included: Yes

Heated: Yes
Finished: Yes
Enclosed: Yes
Contiguous: Yes
Permitted: Yes
Wet space: No
Addition: No
Conversion: No

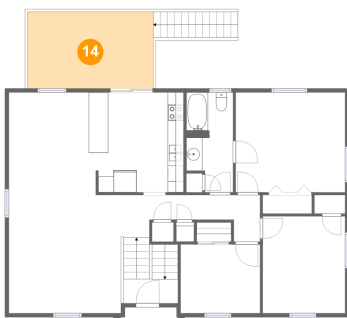
13 Floor 2 - Bedroom



Max Dimensions: 10'4" x 12'1"
Calculated Area: 125 sq. ft
Included: Yes

Heated: Yes
Finished: Yes
Enclosed: Yes
Contiguous: Yes
Permitted: Yes
Wet space: No
Addition: No
Conversion: No

14 Floor 2 - Deck



Max Dimensions: 15'8" x 9'6"
Calculated Area: 150 sq. ft
Included: No

Heated: No
Finished: Yes
Enclosed: No
Contiguous: Yes
Permitted: Yes
Wet space: No
Addition: No
Conversion: No

3716 Bower Road, Windsor West, Cave Spring, Roanoke,
Roanoke County, Virginia, United States, 24018

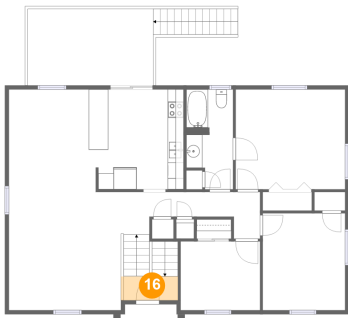
15 Floor 2 - Dining Area



Max Dimensions: 10'0" x 12'9"
Calculated Area: 128 sq. ft
Included: Yes

Heated: Yes
Finished: Yes
Enclosed: Yes
Contiguous: Yes
Permitted: Yes
Wet space: No
Addition: No
Conversion: No

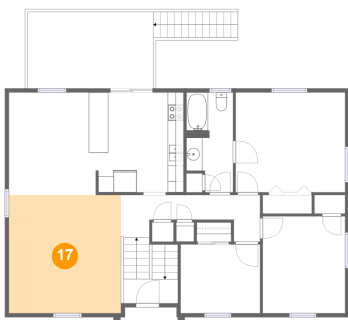
16 Floor 2 - Foyer



Max Dimensions: 6'10" x 3'0"
Calculated Area: 21 sq. ft
Included: Yes

Heated: Yes
Finished: Yes
Enclosed: Yes
Contiguous: Yes
Permitted: Yes
Wet space: No
Addition: No
Conversion: No

17 Floor 2 - Living Room



Max Dimensions: 14'0" x 14'9"
Calculated Area: 207 sq. ft
Included: Yes

Heated: Yes
Finished: Yes
Enclosed: Yes
Contiguous: Yes
Permitted: Yes
Wet space: No
Addition: No
Conversion: No

3716 Bower Road, Windsor West, Cave Spring, Roanoke,
Roanoke County, Virginia, United States, 24018

18 Floor 2 - Bedroom



Max Dimensions: 9'11" x 8'7"
Calculated Area: 85 sq. ft
Included: Yes

Heated: Yes
Finished: Yes
Enclosed: Yes
Contiguous: Yes
Permitted: Yes
Wet space: No
Addition: No
Conversion: No

19 Floor 2 - Primary Bedroom



Max Dimensions: 13'8" x 12'6"
Calculated Area: 170 sq. ft
Included: Yes

Heated: Yes
Finished: Yes
Enclosed: Yes
Contiguous: Yes
Permitted: Yes
Wet space: No
Addition: No
Conversion: No