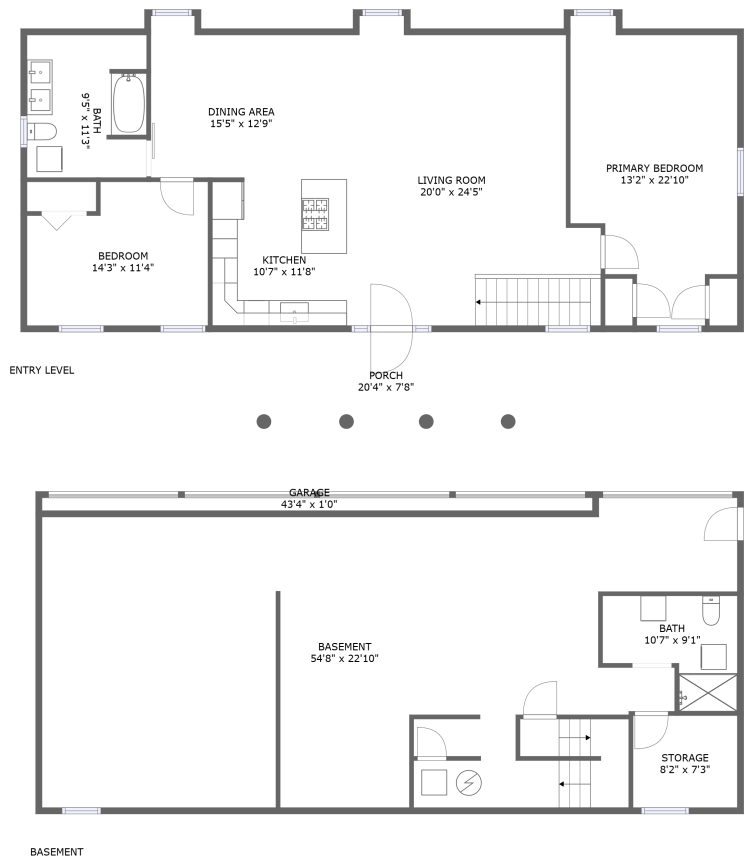


Home report

2222 Pine Ridge Road, Huddleston, Bedford County, Virginia,
United States, 24104



Total Area: 2433 sq. ft

Floor 1: 1200 sq. ft, Floor 2: 1233 sq. ft

Excluded: Storage 69 sq. ft, Bath 78 sq. ft, Garage 66 sq. ft, Outdoor Porch 155 sq. ft, Low Ceiling 145 sq. ft

Property summary

 **2**
Floors

 **2**
Bedrooms

 **1**
Bathrooms

Home report

**2222 Pine Ridge Road, Huddleston, Bedford County, Virginia,
United States, 24104**



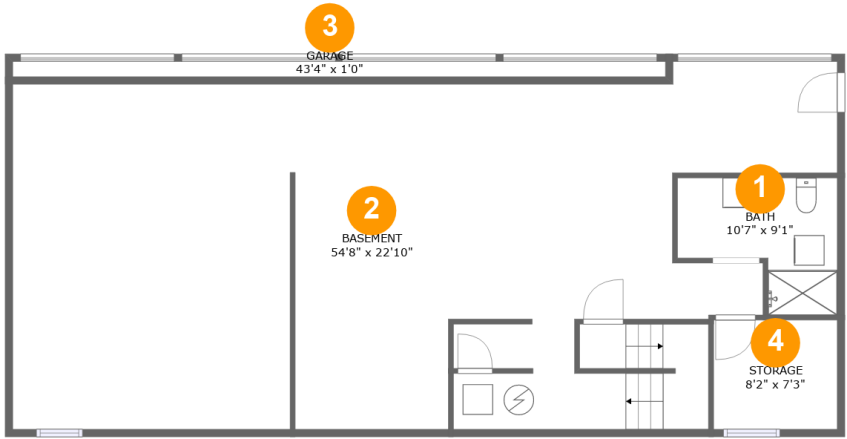
1
Half baths



1
Garages

Home report

2222 Pine Ridge Road, Huddleston, Bedford County, Virginia,
United States, 24104



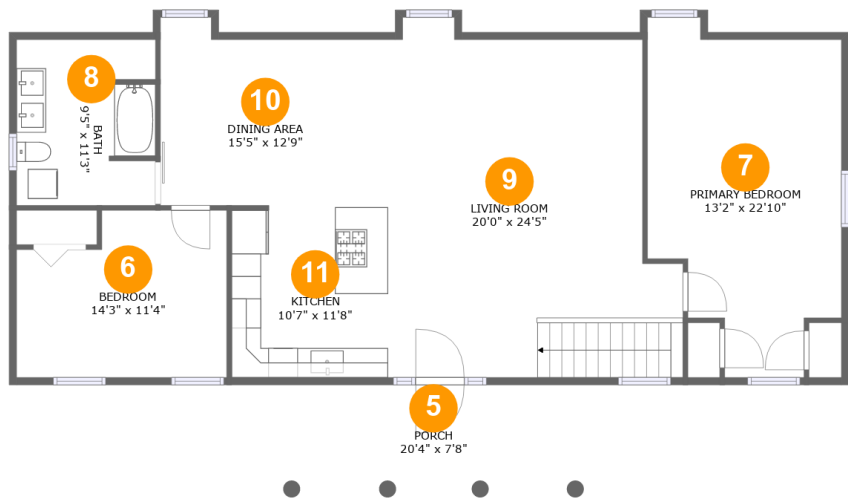
Room dimensions

Floor 1 Total:1200sqft Excluded: 213sqft

#		Max Dimensions	sqft	Included
1	Bath	10'7" x 9'1"	74 sq. ft	No
2	Basement	54'8" x 22'10"	1102 sq. ft	Yes
3	Garage	43'4" x 1'0"	44 sq. ft	No
4	Storage	8'2" x 7'3"	59 sq. ft	No

Home report

2222 Pine Ridge Road, Huddleston, Bedford County, Virginia,
United States, 24104



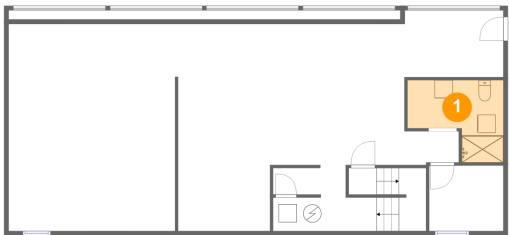
Room dimensions

Floor 2 Total:1233sqft Excluded: 300sqft

#		Max Dimensions	sqft	Included
5	Porch	20'4" x 7'8"	155 sq. ft	No
6	Bedroom	14'3" x 11'4"	146 sq. ft	Yes
7	Primary Bedroom	13'2" x 22'10"	238 sq. ft	Yes
8	Bath	9'5" x 11'3"	78 sq. ft	Yes
9	Living Room	20'0" x 24'5"	384 sq. ft	Yes
10	Dining Area	15'5" x 12'9"	146 sq. ft	Yes
11	Kitchen	10'7" x 11'8"	122 sq. ft	Yes

2222 Pine Ridge Road, Huddleston, Bedford County, Virginia,
United States, 24104

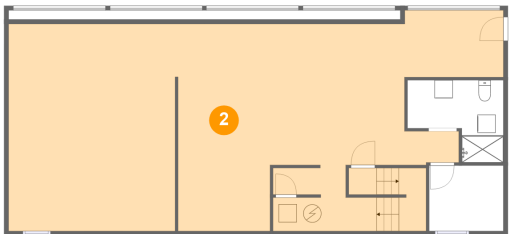
1 Floor 1 - Bath



Max Dimensions: 10'7" x 9'1"
Calculated Area: 74 sq. ft
Included: No

Heated: Yes
Finished: No
Enclosed: Yes
Contiguous: Yes
Permitted: Yes
Wet space: Yes
Addition: No
Conversion: No

2 Floor 1 - Basement

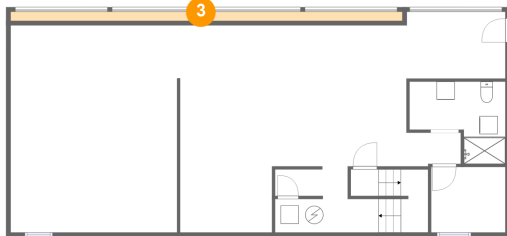


Max Dimensions: 54'8" x 22'10"
Calculated Area: 1102 sq. ft
Included: Yes

Heated: Yes
Finished: Yes
Enclosed: Yes
Contiguous: Yes
Permitted: Yes
Wet space: No
Addition: No
Conversion: No

2222 Pine Ridge Road, Huddleston, Bedford County, Virginia,
United States, 24104

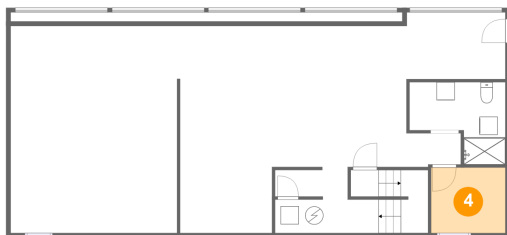
3 Floor 1 - Garage



Max Dimensions: 43'4" x 1'0"
Calculated Area: 44 sq. ft
Included: No

Heated: No
Finished: No
Enclosed: Yes
Contiguous: Yes
Permitted: Yes
Wet space: No
Addition: No
Conversion: No

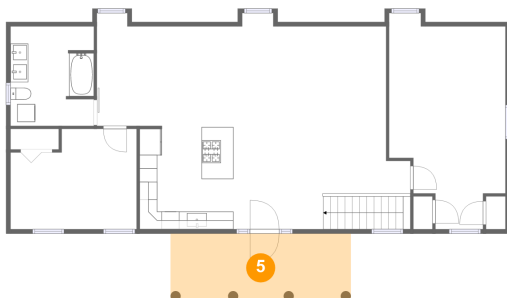
4 Floor 1 - Storage



Max Dimensions: 8'2" x 7'3"
Calculated Area: 59 sq. ft
Included: No

Heated: No
Finished: No
Enclosed: No
Contiguous: No
Permitted: Yes
Wet space: No
Addition: No
Conversion: No

5 Floor 2 - Porch

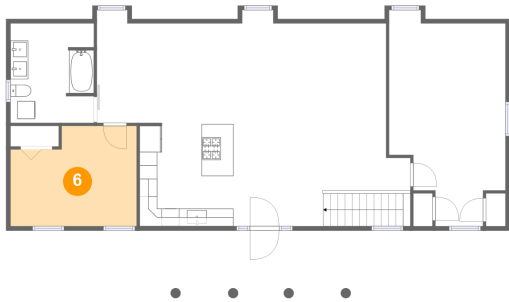


Max Dimensions: 20'4" x 7'8"
Calculated Area: 155 sq. ft
Included: No

Heated: No
Finished: Yes
Enclosed: No
Contiguous: Yes
Permitted: Yes
Wet space: No
Addition: No
Conversion: No

2222 Pine Ridge Road, Huddleston, Bedford County, Virginia,
United States, 24104

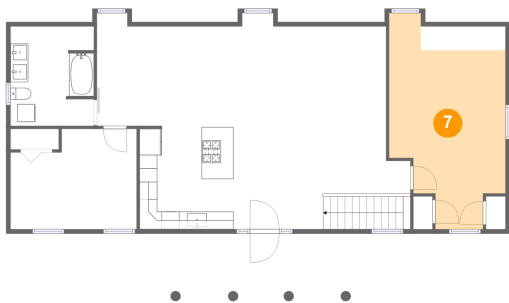
6 Floor 2 - Bedroom



Max Dimensions: 14'3" x 11'4"
Calculated Area: 146 sq. ft
Included: Yes

Heated: Yes
Finished: Yes
Enclosed: Yes
Contiguous: Yes
Permitted: Yes
Wet space: No
Addition: No
Conversion: No

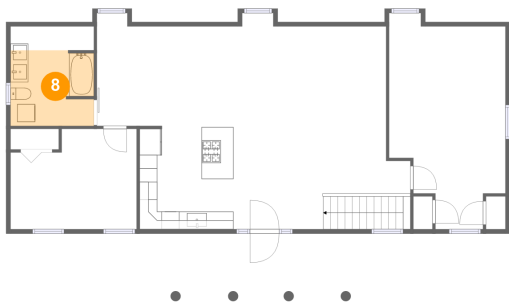
7 Floor 2 - Primary Bedroom



Max Dimensions: 13'2" x 22'10"
Calculated Area: 238 sq. ft
Included: Yes

Heated: Yes
Finished: Yes
Enclosed: Yes
Contiguous: Yes
Permitted: Yes
Wet space: No
Addition: No
Conversion: No

8 Floor 2 - Bath

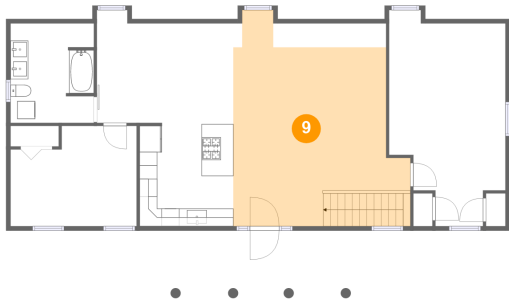


Max Dimensions: 9'5" x 11'3"
Calculated Area: 78 sq. ft
Included: Yes

Heated: Yes
Finished: Yes
Enclosed: Yes
Contiguous: Yes
Permitted: Yes
Wet space: Yes
Addition: No
Conversion: No

2222 Pine Ridge Road, Huddleston, Bedford County, Virginia,
United States, 24104

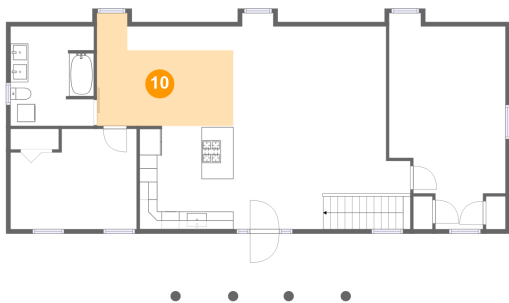
9 Floor 2 - Living Room



Max Dimensions: 20'0" x 24'5"
Calculated Area: 384 sq. ft
Included: Yes

Heated: Yes
Finished: Yes
Enclosed: Yes
Contiguous: Yes
Permitted: Yes
Wet space: No
Addition: No
Conversion: No

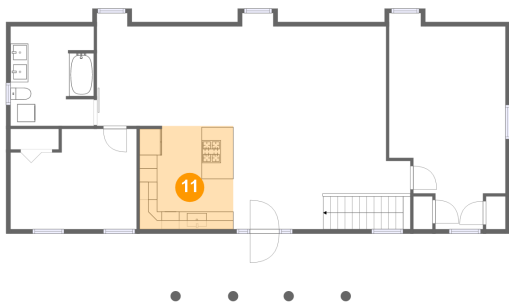
10 Floor 2 - Dining Area



Max Dimensions: 15'5" x 12'9"
Calculated Area: 146 sq. ft
Included: Yes

Heated: Yes
Finished: Yes
Enclosed: Yes
Contiguous: Yes
Permitted: Yes
Wet space: No
Addition: No
Conversion: No

11 Floor 2 - Kitchen



Max Dimensions: 10'7" x 11'8"
Calculated Area: 122 sq. ft
Included: Yes

Heated: Yes
Finished: Yes
Enclosed: Yes
Contiguous: Yes
Permitted: Yes
Wet space: No
Addition: No
Conversion: No