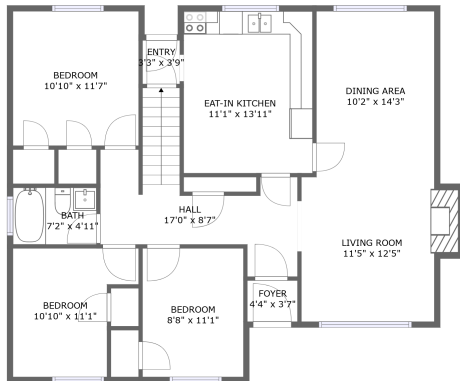
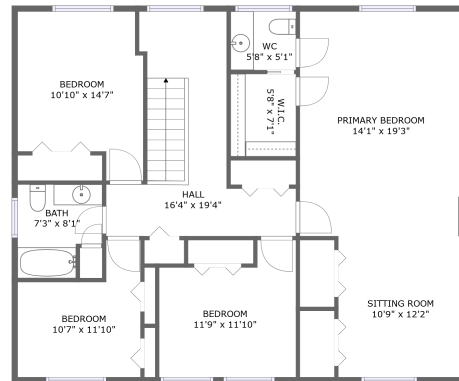


Home report

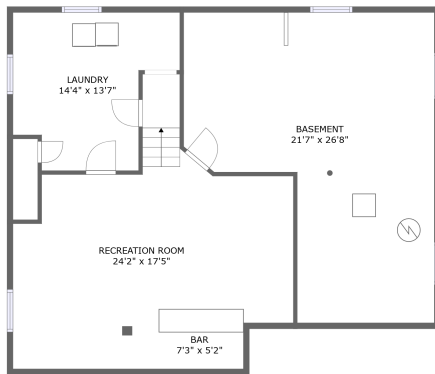
186 Norice Street, Tanglewood, Nepean, Ontario, Canada, K2G 2Y4



FLOOR 2



FLOOR 3



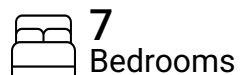
FLOOR 1

Total Area: 2852 sq. ft

Floor 1: 447 sq. ft, Floor 2: 1126 sq. ft, Floor 3: 1279 sq. ft

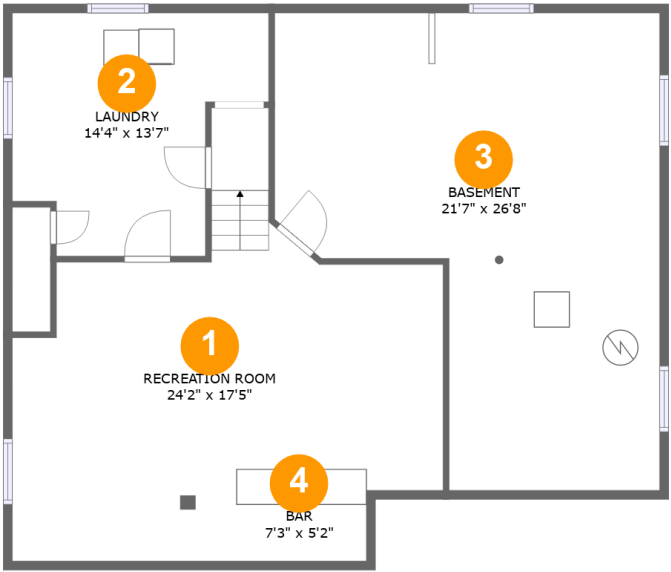
Excluded: Basement 480 sq. ft, Undefined 20 sq. ft, Utility Laundry 171 sq. ft, Fireplace 13 sq. ft

Property summary



Home report

186 Norice Street, Tanglewood, Nepean, Ontario, Canada, K2G 2Y4



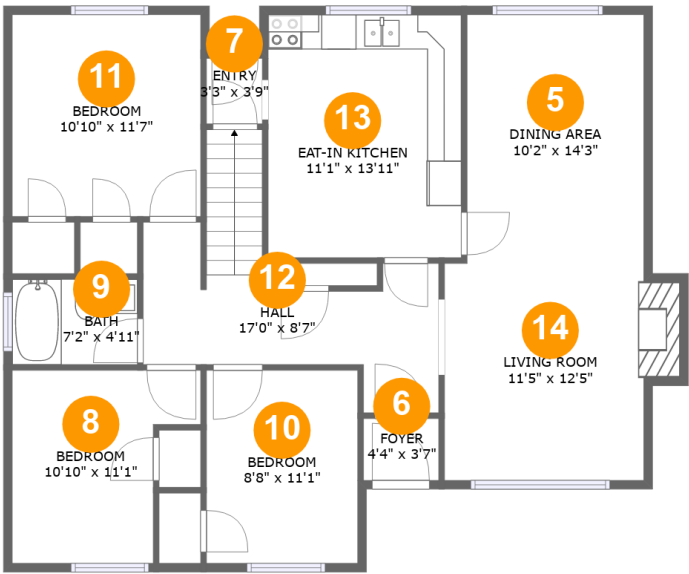
Room dimensions

Floor 1 Total:447sqft Excluded: 671sqft

#		Max Dimensions	sqft	Included
1	Recreation Room	24'2" x 17'5"	369 sq. ft	Yes
2	Laundry	14'4" x 13'7"	158 sq. ft	No
3	Basement	21'7" x 26'8"	447 sq. ft	No
4	Bar	7'3" x 5'2"	37 sq. ft	Yes

Home report

186 Norice Street, Tanglewood, Nepean, Ontario, Canada, K2G 2Y4



Room dimensions

Floor 2

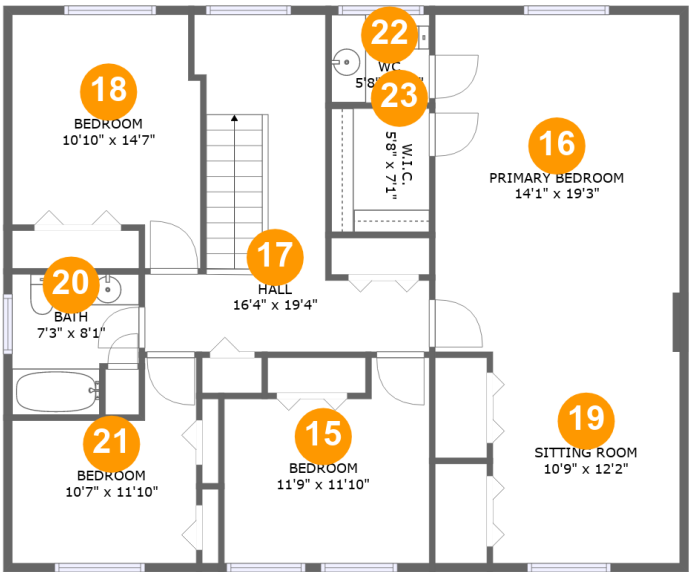
Total:1126sqft

Excluded: 13sqft

#		Max Dimensions	sqft	Included
5	Dining Area	10'2" x 14'3"	145 sq. ft	Yes
6	Foyer	4'4" x 3'7"	15 sq. ft	Yes
7	Entry	3'3" x 3'9"	12 sq. ft	Yes
8	Bedroom	10'10" x 11'1"	98 sq. ft	Yes
9	Bath	7'2" x 4'11"	35 sq. ft	Yes
10	Bedroom	8'8" x 11'1"	96 sq. ft	Yes
11	Bedroom	10'10" x 11'7"	125 sq. ft	Yes
12	Hall	17'0" x 8'7"	131 sq. ft	Yes
13	Eat-in Kitchen	11'1" x 13'11"	155 sq. ft	Yes
14	Living Room	11'5" x 12'5"	154 sq. ft	Yes

Home report

186 Norice Street, Tanglewood, Nepean, Ontario, Canada, K2G 2Y4



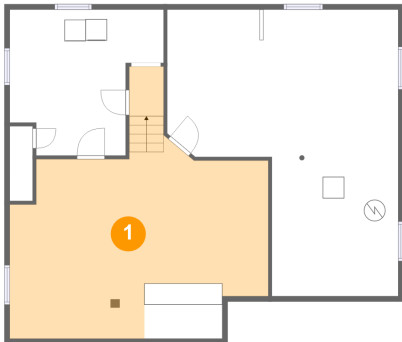
Room dimensions

Floor 3 Total:1279sqft Excluded: 0sqft

#		Max Dimensions	sqft	Included
15	Bedroom	11'9" x 11'10"	119 sq. ft	Yes
16	Primary Bedroom	14'1" x 19'3"	272 sq. ft	Yes
17	Hall	16'4" x 19'4"	175 sq. ft	Yes
18	Bedroom	10'10" x 14'7"	136 sq. ft	Yes
19	Sitting Room	10'9" x 12'2"	130 sq. ft	Yes
20	Bath	7'3" x 8'1"	52 sq. ft	Yes
21	Bedroom	10'7" x 11'10"	97 sq. ft	Yes
22	WC	5'8" x 5'1"	28 sq. ft	Yes
23	W.I.C.	5'8" x 7'1"	40 sq. ft	Yes

186 Norice Street, Tanglewood, Nepean, Ontario, Canada, K2G 2Y4

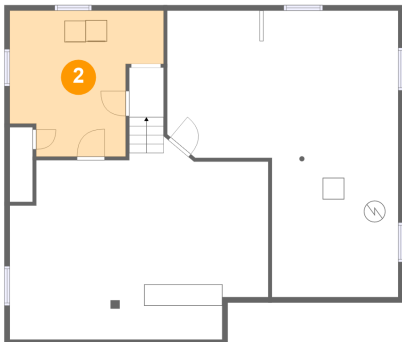
1 Floor 1 - Recreation Room



Max Dimensions: 24'2" x 17'5"
Calculated Area: 369 sq. ft
Included: Yes

Heated: Yes
Finished: Yes
Enclosed: Yes
Contiguous: Yes
Permitted: Yes
Wet space: No
Addition: No
Conversion: No

2 Floor 1 - Laundry



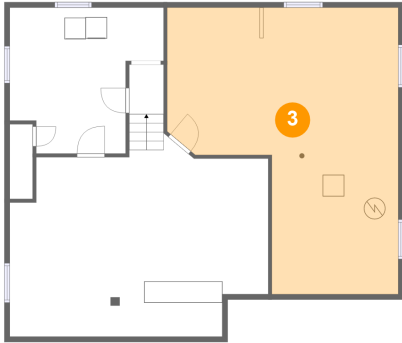
Max Dimensions: 14'4" x 13'7"
Calculated Area: 158 sq. ft
Included: No

Heated: Yes
Finished: No
Enclosed: Yes
Contiguous: Yes
Permitted: Yes
Wet space: No
Addition: No
Conversion: No

Home report

186 Norice Street, Tanglewood, Nepean, Ontario, Canada, K2G 2Y4

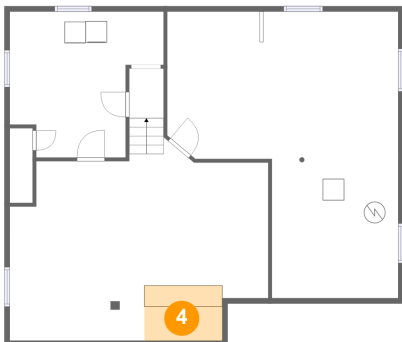
3 Floor 1 - Basement



Max Dimensions: 21'7" x 26'8"
Calculated Area: 447 sq. ft
Included: No

Heated: Yes
Finished: No
Enclosed: Yes
Contiguous: Yes
Permitted: Yes
Wet space: No
Addition: No
Conversion: No

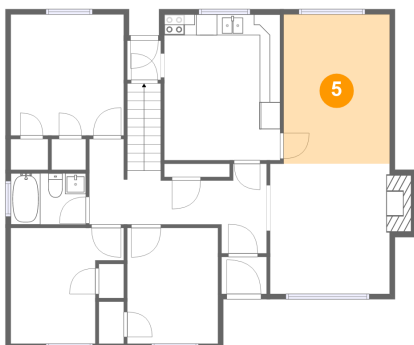
4 Floor 1 - Bar



Max Dimensions: 7'3" x 5'2"
Calculated Area: 37 sq. ft
Included: Yes

Heated: Yes
Finished: Yes
Enclosed: Yes
Contiguous: Yes
Permitted: Yes
Wet space: No
Addition: No
Conversion: No

5 Floor 2 - Dining Area

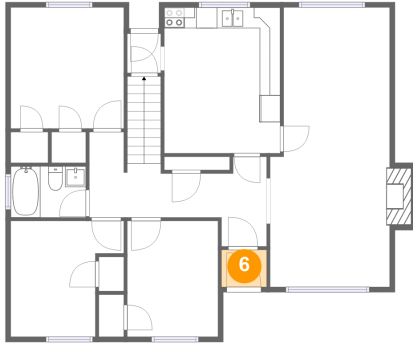


Max Dimensions: 10'2" x 14'3"
Calculated Area: 145 sq. ft
Included: Yes

Heated: Yes
Finished: Yes
Enclosed: Yes
Contiguous: Yes
Permitted: Yes
Wet space: No
Addition: No
Conversion: No

186 Norice Street, Tanglewood, Nepean, Ontario, Canada, K2G 2Y4

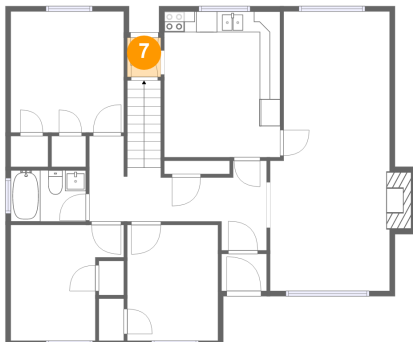
6 Floor 2 - Foyer



Max Dimensions: 4'4" x 3'7"
Calculated Area: 15 sq. ft
Included: Yes

Heated: Yes
Finished: Yes
Enclosed: Yes
Contiguous: Yes
Permitted: Yes
Wet space: No
Addition: No
Conversion: No

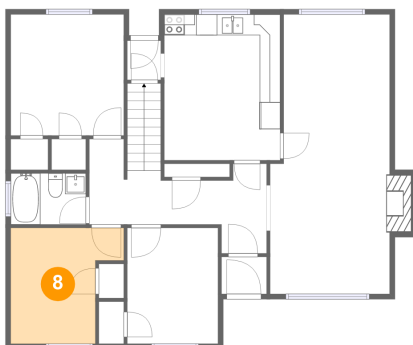
7 Floor 2 - Entry



Max Dimensions: 3'3" x 3'9"
Calculated Area: 12 sq. ft
Included: Yes

Heated: Yes
Finished: Yes
Enclosed: Yes
Contiguous: Yes
Permitted: Yes
Wet space: No
Addition: No
Conversion: No

8 Floor 2 - Bedroom



Max Dimensions: 10'10" x 11'1"
Calculated Area: 98 sq. ft
Included: Yes

Heated: Yes
Finished: Yes
Enclosed: Yes
Contiguous: Yes
Permitted: Yes
Wet space: No
Addition: No
Conversion: No

186 Norice Street, Tanglewood, Nepean, Ontario, Canada, K2G 2Y4

9 Floor 2 - Bath



Max Dimensions: 7'2" x 4'11"
Calculated Area: 35 sq. ft
Included: Yes

Heated: Yes
Finished: Yes
Enclosed: Yes
Contiguous: Yes
Permitted: Yes
Wet space: Yes
Addition: No
Conversion: No

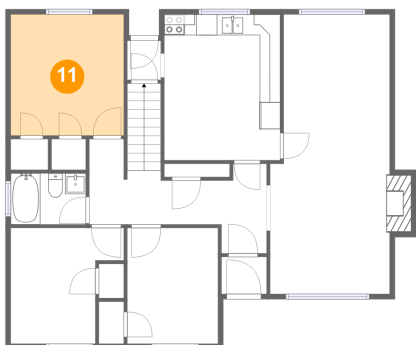
10 Floor 2 - Bedroom



Max Dimensions: 8'8" x 11'1"
Calculated Area: 96 sq. ft
Included: Yes

Heated: Yes
Finished: Yes
Enclosed: Yes
Contiguous: Yes
Permitted: Yes
Wet space: No
Addition: No
Conversion: No

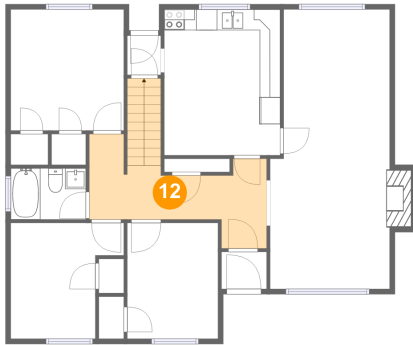
11 Floor 2 - Bedroom



Max Dimensions: 10'10" x 11'7"
Calculated Area: 125 sq. ft
Included: Yes

Heated: Yes
Finished: Yes
Enclosed: Yes
Contiguous: Yes
Permitted: Yes
Wet space: No
Addition: No
Conversion: No

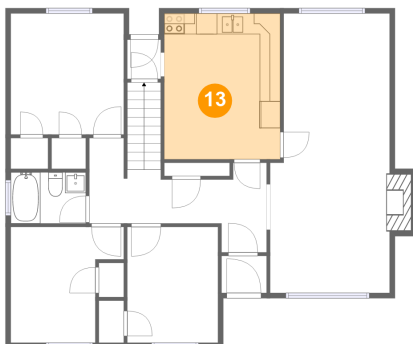
12 Floor 2 - Hall



Max Dimensions: 17'0" x 8'7"
Calculated Area: 131 sq. ft
Included: Yes

Heated: Yes
Finished: Yes
Enclosed: Yes
Contiguous: Yes
Permitted: Yes
Wet space: No
Addition: No
Conversion: No

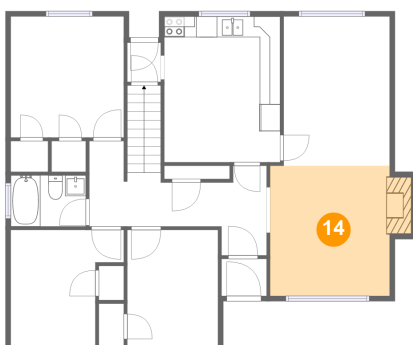
13 Floor 2 - Eat-in Kitchen



Max Dimensions: 11'1" x 13'11"
Calculated Area: 155 sq. ft
Included: Yes

Heated: Yes
Finished: Yes
Enclosed: Yes
Contiguous: Yes
Permitted: Yes
Wet space: No
Addition: No
Conversion: No

14 Floor 2 - Living Room

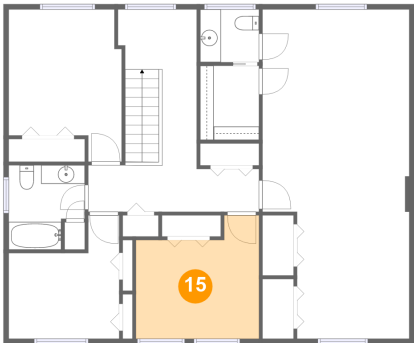


Max Dimensions: 11'5" x 12'5"
Calculated Area: 154 sq. ft
Included: Yes

Heated: Yes
Finished: Yes
Enclosed: Yes
Contiguous: Yes
Permitted: Yes
Wet space: No
Addition: No
Conversion: No

186 Norice Street, Tanglewood, Nepean, Ontario, Canada, K2G 2Y4

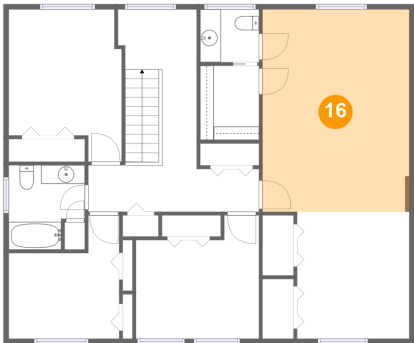
15 Floor 3 - Bedroom



Max Dimensions: 11'9" x 11'10"
Calculated Area: 119 sq. ft
Included: Yes

Heated: Yes
Finished: Yes
Enclosed: Yes
Contiguous: Yes
Permitted: Yes
Wet space: No
Addition: No
Conversion: No

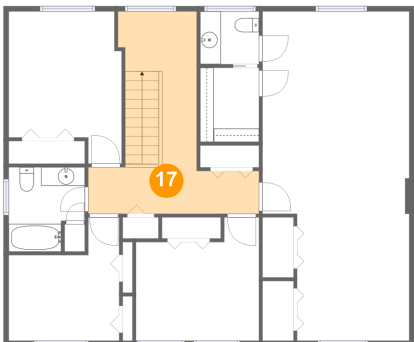
16 Floor 3 - Primary Bedroom



Max Dimensions: 14'1" x 19'3"
Calculated Area: 272 sq. ft
Included: Yes

Heated: Yes
Finished: Yes
Enclosed: Yes
Contiguous: Yes
Permitted: Yes
Wet space: No
Addition: No
Conversion: No

17 Floor 3 - Hall

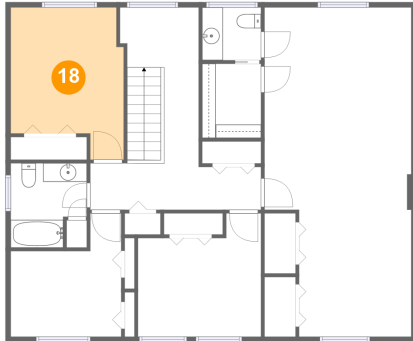


Max Dimensions: 16'4" x 19'4"
Calculated Area: 175 sq. ft
Included: Yes

Heated: Yes
Finished: Yes
Enclosed: Yes
Contiguous: Yes
Permitted: Yes
Wet space: No
Addition: No
Conversion: No

186 Norice Street, Tanglewood, Nepean, Ontario, Canada, K2G 2Y4

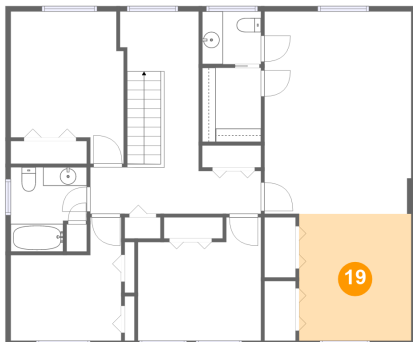
18 Floor 3 - Bedroom



Max Dimensions: 10'10" x 14'7"
Calculated Area: 136 sq. ft
Included: Yes

Heated: Yes
Finished: Yes
Enclosed: Yes
Contiguous: Yes
Permitted: Yes
Wet space: No
Addition: No
Conversion: No

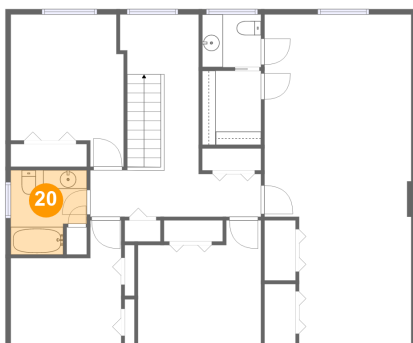
19 Floor 3 - Sitting Room



Max Dimensions: 10'9" x 12'2"
Calculated Area: 130 sq. ft
Included: Yes

Heated: Yes
Finished: Yes
Enclosed: Yes
Contiguous: Yes
Permitted: Yes
Wet space: No
Addition: No
Conversion: No

20 Floor 3 - Bath

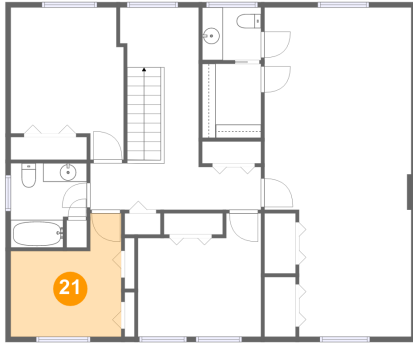


Max Dimensions: 7'3" x 8'1"
Calculated Area: 52 sq. ft
Included: Yes

Heated: Yes
Finished: Yes
Enclosed: Yes
Contiguous: Yes
Permitted: Yes
Wet space: Yes
Addition: No
Conversion: No

186 Norice Street, Tanglewood, Nepean, Ontario, Canada, K2G 2Y4

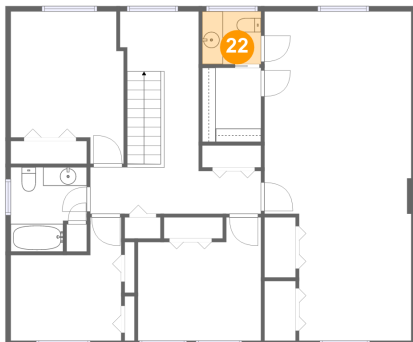
21 Floor 3 - Bedroom



Max Dimensions: 10'7" x 11'10"
Calculated Area: 97 sq. ft
Included: Yes

Heated: Yes
Finished: Yes
Enclosed: Yes
Contiguous: Yes
Permitted: Yes
Wet space: No
Addition: No
Conversion: No

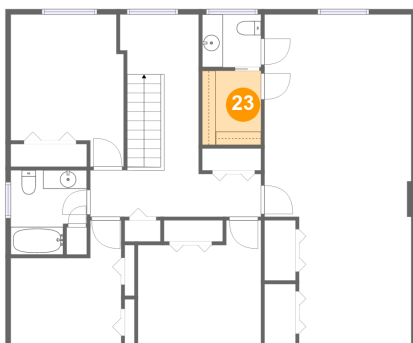
22 Floor 3 - WC



Max Dimensions: 5'8" x 5'1"
Calculated Area: 28 sq. ft
Included: Yes

Heated: Yes
Finished: Yes
Enclosed: Yes
Contiguous: Yes
Permitted: Yes
Wet space: Yes
Addition: No
Conversion: No

23 Floor 3 - W.I.C.



Max Dimensions: 5'8" x 7'1"
Calculated Area: 40 sq. ft
Included: Yes

Heated: Yes
Finished: Yes
Enclosed: Yes
Contiguous: Yes
Permitted: Yes
Wet space: No
Addition: No
Conversion: No