

Home report

1915 Ohio Highway 344, Perry Township, Salem, Columbiana County, Ohio, United States, 44460



Total Area: 1666 sq. ft

Below Ground: 0 sq. ft, Floor 2: 1666 sq. ft  
Excluded: Storage 461 sq. ft, WC 51 sq. ft, Garage 697 sq. ft, Undefined 35 sq. ft, Basement 460 sq. ft, Utility 285 sq. ft, Porch 105 sq. ft, Patio 954 sq. ft, Embeddedwindow 20 sq. ft, Walls: 275 sq. ft

Property summary

 **2** Floors

 **2** Bedrooms

 **1** Bathrooms

Home report

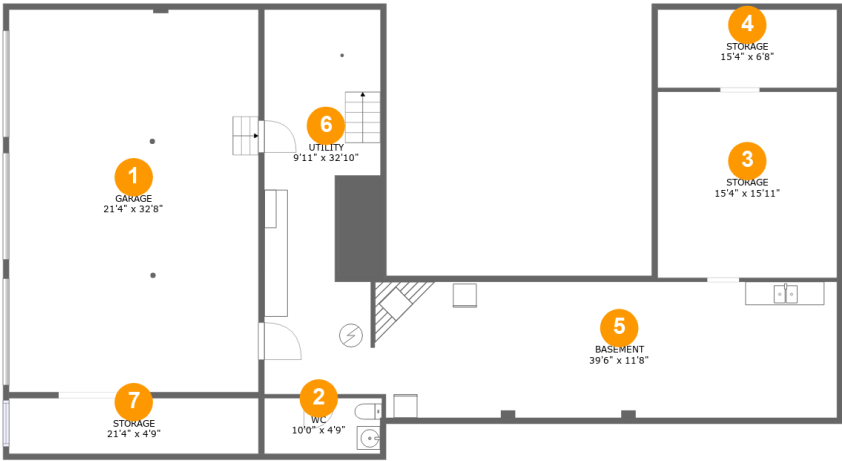
1915 Ohio Highway 344, Perry Township, Salem, Columbiana  
County, Ohio, United States, 44460

 **2**  
Half baths

 **1**  
Garages

Home report

1915 Ohio Highway 344, Perry Township, Salem, Columbiana County, Ohio, United States, 44460



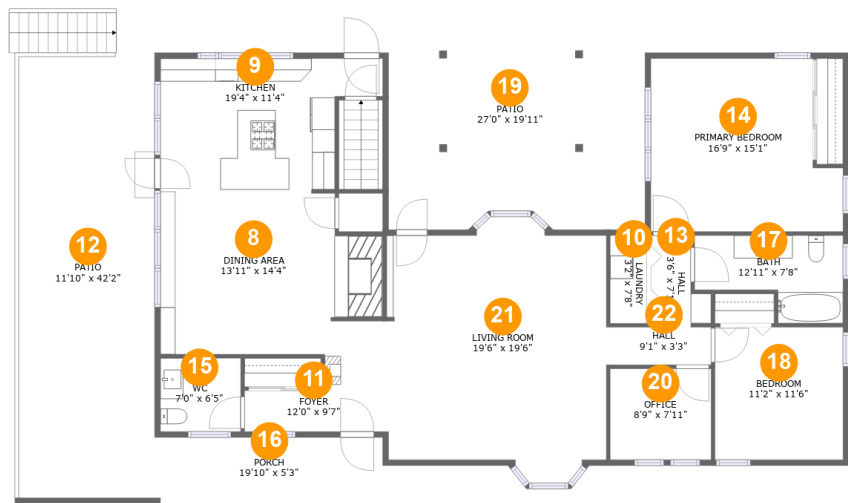
Room dimensions

Floor 1 Below ground Total:0sqft Excluded: 1989sqft

#		Max Dimensions	sqft	Included
1	Garage	21'4" x 32'8"	697 sq. ft	No
2	WC	10'0" x 4'9"	47 sq. ft	No
3	Storage	15'4" x 15'11"	244 sq. ft	No
4	Storage	15'4" x 6'8"	103 sq. ft	No
5	Basement	39'6" x 11'8"	458 sq. ft	No
6	Utility	9'11" x 32'10"	285 sq. ft	No
7	Storage	21'4" x 4'9"	101 sq. ft	No

Home report

1915 Ohio Highway 344, Perry Township, Salem, Columbiana County, Ohio, United States, 44460



Room dimensions

Floor 2 Total:1666sqft Excluded: 1079sqft

#		Max Dimensions	sqft	Included
8	Dining Area	13'11" x 14'4"	247 sq. ft	Yes
9	Kitchen	19'4" x 11'4"	187 sq. ft	Yes
10	Laundry	3'2" x 7'8"	24 sq. ft	Yes
11	Foyer	12'0" x 9'7"	73 sq. ft	Yes
12	Patio	11'10" x 42'2"	499 sq. ft	No
13	Hall	3'6" x 7'11"	32 sq. ft	Yes
14	Primary Bedroom	16'9" x 15'1"	227 sq. ft	Yes
15	WC	7'0" x 6'5"	45 sq. ft	Yes
16	Porch	19'10" x 5'3"	105 sq. ft	No
17	Bath	12'11" x 7'8"	78 sq. ft	Yes
18	Bedroom	11'2" x 11'6"	129 sq. ft	Yes

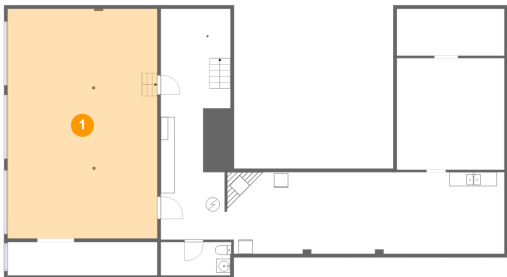
## Home report

**1915 Ohio Highway 344, Perry Township, Salem, Columbiana County, Ohio, United States, 44460**

#		Max Dimensions	sqft	Included
19	Patio	27'0" x 19'11"	465 sq. ft	No
20	Office	8'9" x 7'11"	70 sq. ft	Yes
21	Living Room	19'6" x 19'6"	376 sq. ft	Yes
22	Hall	9'1" x 3'3"	30 sq. ft	Yes

1915 Ohio Highway 344, Perry Township, Salem, Columbiana County, Ohio, United States, 44460

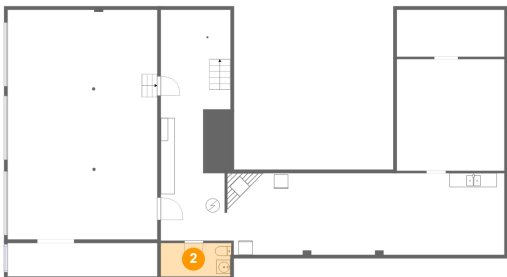
1 Floor 1 - Garage



Max Dimensions: 21'4" x 32'8"  
Calculated Area: 697 sq. ft  
Included: No

Heated: No  
Finished: No  
Enclosed: Yes  
Contiguous: Yes  
Permitted: Yes  
Wet space: No  
Addition: No  
Conversion: No

2 Floor 1 - WC

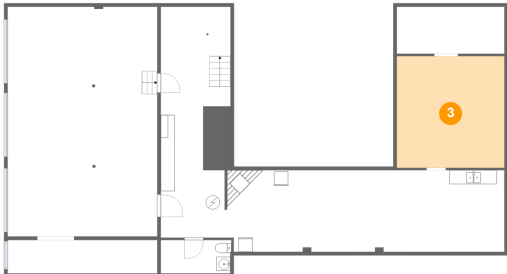


Max Dimensions: 10'0" x 4'9"  
Calculated Area: 47 sq. ft  
Included: No

Heated: Yes  
Finished: No  
Enclosed: Yes  
Contiguous: Yes  
Permitted: Yes  
Wet space: Yes  
Addition: No  
Conversion: No

1915 Ohio Highway 344, Perry Township, Salem, Columbiana County, Ohio, United States, 44460

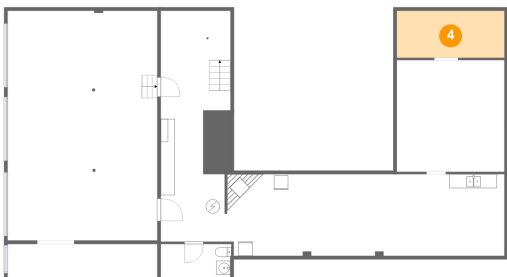
3 Floor 1 - Storage



Max Dimensions: 15'4" x 15'11"  
Calculated Area: 244 sq. ft  
Included: No

Heated: No  
Finished: No  
Enclosed: No  
Contiguous: Yes  
Permitted: Yes  
Wet space: No  
Addition: No  
Conversion: No

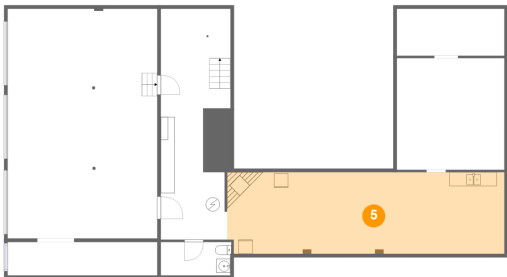
4 Floor 1 - Storage



Max Dimensions: 15'4" x 6'8"  
Calculated Area: 103 sq. ft  
Included: No

Heated: No  
Finished: No  
Enclosed: No  
Contiguous: Yes  
Permitted: Yes  
Wet space: No  
Addition: No  
Conversion: No

5 Floor 1 - Basement

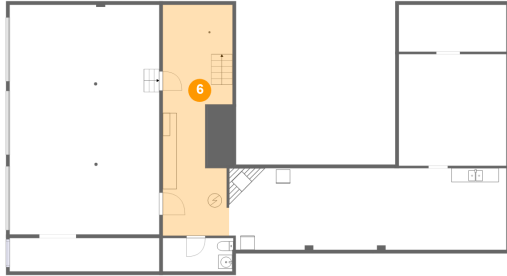


Max Dimensions: 39'6" x 11'8"  
Calculated Area: 458 sq. ft  
Included: No

Heated: Yes  
Finished: No  
Enclosed: Yes  
Contiguous: Yes  
Permitted: Yes  
Wet space: No  
Addition: No  
Conversion: No

1915 Ohio Highway 344, Perry Township, Salem, Columbiana County, Ohio, United States, 44460

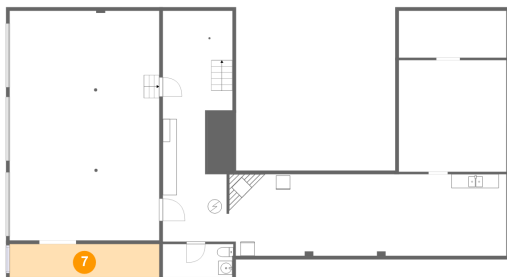
## 6 Floor 1 - Utility



Max Dimensions: 9'11" x 32'10"  
Calculated Area: 285 sq. ft  
Included: No

Heated: Yes  
Finished: No  
Enclosed: Yes  
Contiguous: Yes  
Permitted: Yes  
Wet space: No  
Addition: No  
Conversion: No

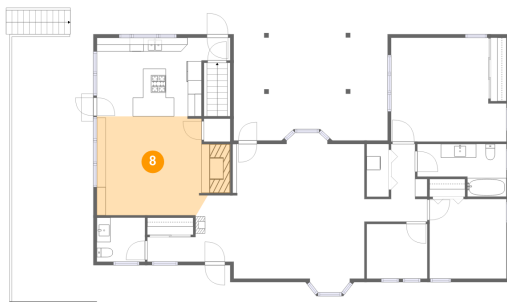
## 7 Floor 1 - Storage



Max Dimensions: 21'4" x 4'9"  
Calculated Area: 101 sq. ft  
Included: No

Heated: No  
Finished: No  
Enclosed: No  
Contiguous: Yes  
Permitted: Yes  
Wet space: No  
Addition: No  
Conversion: No

## 8 Floor 2 - Dining Area



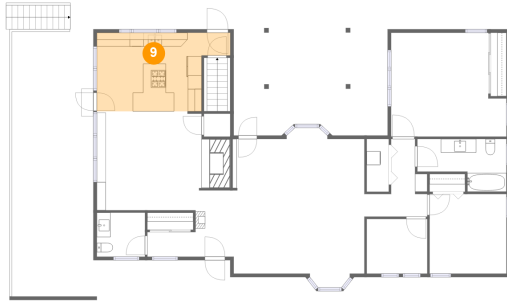
Max Dimensions: 13'11" x 14'4"  
Calculated Area: 247 sq. ft  
Included: Yes

Heated: Yes  
Finished: Yes  
Enclosed: Yes  
Contiguous: Yes  
Permitted: Yes  
Wet space: No  
Addition: No  
Conversion: No



1915 Ohio Highway 344, Perry Township, Salem, Columbiana County, Ohio, United States, 44460

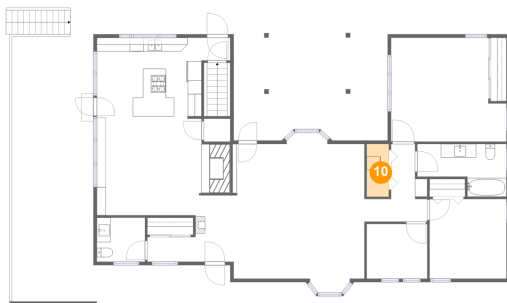
9 Floor 2 - Kitchen



Max Dimensions: 19'4" x 11'4"  
Calculated Area: 187 sq. ft  
Included: Yes

Heated: Yes  
Finished: Yes  
Enclosed: Yes  
Contiguous: Yes  
Permitted: Yes  
Wet space: No  
Addition: No  
Conversion: No

10 Floor 2 - Laundry



Max Dimensions: 3'2" x 7'8"  
Calculated Area: 24 sq. ft  
Included: Yes

Heated: Yes  
Finished: Yes  
Enclosed: Yes  
Contiguous: Yes  
Permitted: Yes  
Wet space: No  
Addition: No  
Conversion: No

11 Floor 2 - Foyer



Max Dimensions: 12'0" x 9'7"  
Calculated Area: 73 sq. ft  
Included: Yes

Heated: Yes  
Finished: Yes  
Enclosed: Yes  
Contiguous: Yes  
Permitted: Yes  
Wet space: No  
Addition: No  
Conversion: No

1915 Ohio Highway 344, Perry Township, Salem, Columbiana County, Ohio, United States, 44460

12 Floor 2 - Patio



Max Dimensions: 11'10" x 42'2"  
Calculated Area: 499 sq. ft  
Included: No

Heated: No  
Finished: Yes  
Enclosed: No  
Contiguous: Yes  
Permitted: Yes  
Wet space: No  
Addition: No  
Conversion: No

13 Floor 2 - Hall



Max Dimensions: 3'6" x 7'11"  
Calculated Area: 32 sq. ft  
Included: Yes

Heated: Yes  
Finished: Yes  
Enclosed: Yes  
Contiguous: Yes  
Permitted: Yes  
Wet space: No  
Addition: No  
Conversion: No

14 Floor 2 - Primary Bedroom

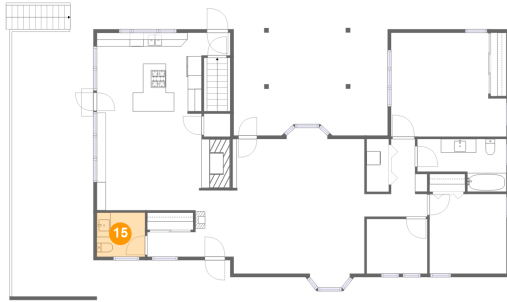


Max Dimensions: 16'9" x 15'1"  
Calculated Area: 227 sq. ft  
Included: Yes

Heated: Yes  
Finished: Yes  
Enclosed: Yes  
Contiguous: Yes  
Permitted: Yes  
Wet space: No  
Addition: No  
Conversion: No

1915 Ohio Highway 344, Perry Township, Salem, Columbiana County, Ohio, United States, 44460

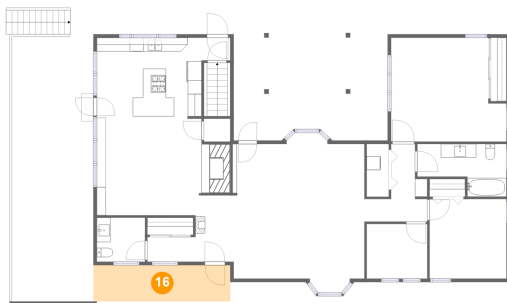
**15** Floor 2 - WC



Max Dimensions: 7'0" x 6'5"  
Calculated Area: 45 sq. ft  
Included: Yes

Heated: Yes  
Finished: Yes  
Enclosed: Yes  
Contiguous: Yes  
Permitted: Yes  
Wet space: Yes  
Addition: No  
Conversion: No

**16** Floor 2 - Porch



Max Dimensions: 19'10" x 5'3"  
Calculated Area: 105 sq. ft  
Included: No

Heated: No  
Finished: Yes  
Enclosed: No  
Contiguous: Yes  
Permitted: Yes  
Wet space: No  
Addition: No  
Conversion: No

**17** Floor 2 - Bath



Max Dimensions: 12'11" x 7'8"  
Calculated Area: 78 sq. ft  
Included: Yes

Heated: Yes  
Finished: Yes  
Enclosed: Yes  
Contiguous: Yes  
Permitted: Yes  
Wet space: Yes  
Addition: No  
Conversion: No

1915 Ohio Highway 344, Perry Township, Salem, Columbiana County, Ohio, United States, 44460

18 Floor 2 - Bedroom



Max Dimensions: 11'2" x 11'6"  
Calculated Area: 129 sq. ft  
Included: Yes

Heated: Yes  
Finished: Yes  
Enclosed: Yes  
Contiguous: Yes  
Permitted: Yes  
Wet space: No  
Addition: No  
Conversion: No

19 Floor 2 - Patio



Max Dimensions: 27'0" x 19'11"  
Calculated Area: 465 sq. ft  
Included: No

Heated: No  
Finished: Yes  
Enclosed: No  
Contiguous: Yes  
Permitted: Yes  
Wet space: No  
Addition: No  
Conversion: No

20 Floor 2 - Office

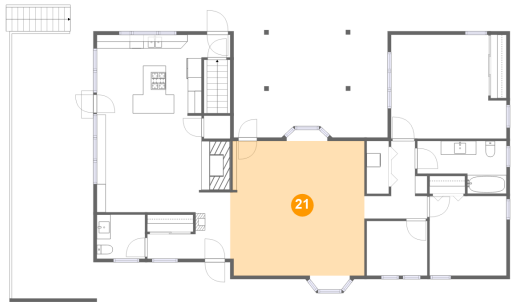


Max Dimensions: 8'9" x 7'11"  
Calculated Area: 70 sq. ft  
Included: Yes

Heated: Yes  
Finished: Yes  
Enclosed: Yes  
Contiguous: Yes  
Permitted: Yes  
Wet space: No  
Addition: No  
Conversion: No

1915 Ohio Highway 344, Perry Township, Salem, Columbiana County, Ohio, United States, 44460

21 Floor 2 - Living Room



Max Dimensions: 19'6" x 19'6"  
Calculated Area: 376 sq. ft  
Included: Yes

Heated: Yes  
Finished: Yes  
Enclosed: Yes  
Contiguous: Yes  
Permitted: Yes  
Wet space: No  
Addition: No  
Conversion: No

22 Floor 2 - Hall



Max Dimensions: 9'1" x 3'3"  
Calculated Area: 30 sq. ft  
Included: Yes

Heated: Yes  
Finished: Yes  
Enclosed: Yes  
Contiguous: Yes  
Permitted: Yes  
Wet space: No  
Addition: No  
Conversion: No