

Home report

2035 Calle Pattito, Templeton, San Luis Obispo County,
California, United States, 93465



Total Area: 2736 sq. ft
Floor 1: 2011 sq. ft, Floor 2: 725 sq. ft
Excluded: Outdoor Porch 31 sq. ft, Garage 1084 sq. ft, Embedded window 5 sq. ft, Outdoor Balcony Screen 99 sq. ft, Open to below 15 sq. ft

Property summary

**2** Floors

**3** Bedrooms

**4** Bathrooms

**1** Garages

Home report

2035 Calle Pattito, Templeton, San Luis Obispo County,
California, United States, 93465



Room dimensions

Floor 1 Total:2702sqft Excluded: 1120sqft

#		Max Dimensions	sqft	Included
1	Primary Bedroom	19'7" x 22'2"	398 sq. ft	Yes
2	Garage	26'2" x 42'4"	1022 sq. ft	No
3	Primary Bath	10'5" x 10'8"	111 sq. ft	Yes
4	Bath	7'7" x 9'5"	58 sq. ft	Yes
5	Foyer	20'0" x 12'5"	180 sq. ft	Yes
6	Living Room	16'2" x 22'4"	340 sq. ft	Yes
7	W.I.C.	9'1" x 4'8"	42 sq. ft	Yes
8	Sitting Room	11'2" x 19'9"	205 sq. ft	Yes
9	Laundry	5'1" x 7'5"	38 sq. ft	Yes
10	Hall	4'10" x 14'7"	71 sq. ft	Yes
11	Pantry	4'11" x 4'2"	13 sq. ft	Yes

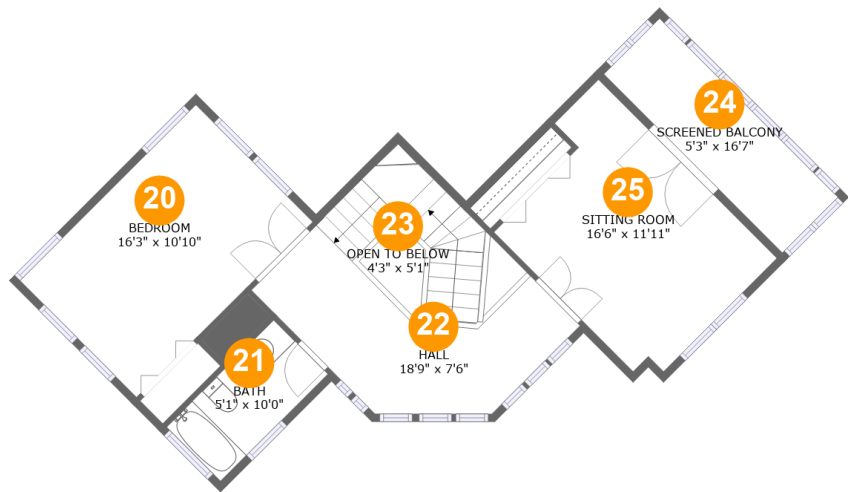
Home report

**2035 Calle Pattito, Templeton, San Luis Obispo County,
California, United States, 93465**

#		Max Dimensions	sqft	Included
12	Porch	3'8" x 8'1"	31 sq. ft	No
13	Dining Area	14'9" x 18'11"	252 sq. ft	Yes
14	W.I.C.	7'4" x 14'3"	106 sq. ft	Yes
15	WC	8'10" x 3'5"	36 sq. ft	Yes
16	Bedroom	10'11" x 14'7"	158 sq. ft	Yes
17	Eat-in Kitchen	12'11" x 10'11"	140 sq. ft	Yes
18	Bath	5'5" x 10'11"	59 sq. ft	Yes
19	Kitchen	14'6" x 15'6"	216 sq. ft	Yes

Home report

2035 Calle Pattito, Templeton, San Luis Obispo County,
California, United States, 93465



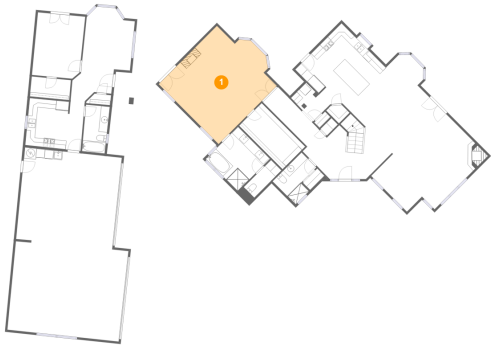
Room dimensions

Floor 2 Total:725sqft Excluded: 114sqft

#		Max Dimensions	sqft	Included
20	Bedroom	16'3" x 10'10"	176 sq. ft	Yes
21	Bath	5'1" x 10'0"	50 sq. ft	Yes
22	Hall	18'9" x 7'6"	214 sq. ft	Yes
23	Open To Below	4'3" x 5'1"	15 sq. ft	No
24	Screened Balcony	5'3" x 16'7"	85 sq. ft	No
25	Sitting Room	16'6" x 11'11"	177 sq. ft	Yes

2035 Calle Pattito, Templeton, San Luis Obispo County,
California, United States, 93465

1 Floor 1 - Primary Bedroom



Max Dimensions: 19'7" x 22'2"
Calculated Area: 398 sq. ft
Included: Yes

Heated: Yes
Finished: Yes
Enclosed: Yes
Contiguous: Yes
Permitted: Yes
Wet space: No
Addition: No
Conversion: No

2 Floor 1 - Garage



Max Dimensions: 26'2" x 42'4"
Calculated Area: 1022 sq. ft
Included: No

Heated: No
Finished: No
Enclosed: Yes
Contiguous: Yes
Permitted: Yes
Wet space: No
Addition: No
Conversion: No

3 Floor 1 - Primary Bath



Max Dimensions: 10'5" x 10'8"
Calculated Area: 111 sq. ft
Included: Yes

Heated: Yes
Finished: Yes
Enclosed: Yes
Contiguous: Yes
Permitted: Yes
Wet space: Yes
Addition: No
Conversion: No

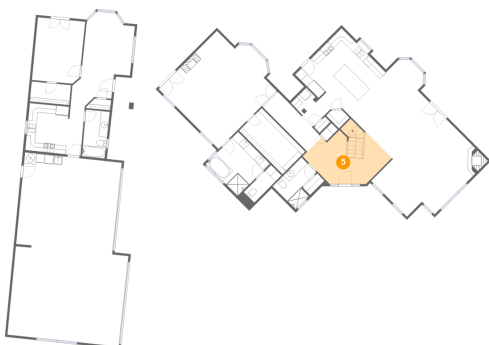
4 Floor 1 - Bath



Max Dimensions: 7'7" x 9'5"
Calculated Area: 58 sq. ft
Included: Yes

Heated: Yes
Finished: Yes
Enclosed: Yes
Contiguous: Yes
Permitted: Yes
Wet space: Yes
Addition: No
Conversion: No

5 Floor 1 - Foyer



Max Dimensions: 20'0" x 12'5"
Calculated Area: 180 sq. ft
Included: Yes

Heated: Yes
Finished: Yes
Enclosed: Yes
Contiguous: Yes
Permitted: Yes
Wet space: No
Addition: No
Conversion: No

2035 Calle Pattito, Templeton, San Luis Obispo County,
California, United States, 93465

6 Floor 1 - Living Room



Max Dimensions: 16'2" x 22'4"
Calculated Area: 340 sq. ft
Included: Yes

Heated: Yes
Finished: Yes
Enclosed: Yes
Contiguous: Yes
Permitted: Yes
Wet space: No
Addition: No
Conversion: No

7 Floor 1 - W.I.C.



Max Dimensions: 9'1" x 4'8"
Calculated Area: 42 sq. ft
Included: Yes

Heated: Yes
Finished: Yes
Enclosed: Yes
Contiguous: Yes
Permitted: Yes
Wet space: No
Addition: No
Conversion: No

8 Floor 1 - Sitting Room



Max Dimensions: 11'2" x 19'9"
Calculated Area: 205 sq. ft
Included: Yes

Heated: Yes
Finished: Yes
Enclosed: Yes
Contiguous: Yes
Permitted: Yes
Wet space: No
Addition: No
Conversion: No

2035 Calle Pattito, Templeton, San Luis Obispo County,
California, United States, 93465

9 Floor 1 - Laundry



Max Dimensions: 5'1" x 7'5"
Calculated Area: 38 sq. ft
Included: Yes

Heated: Yes
Finished: Yes
Enclosed: Yes
Contiguous: Yes
Permitted: Yes
Wet space: No
Addition: No
Conversion: No

10 Floor 1 - Hall



Max Dimensions: 4'10" x 14'7"
Calculated Area: 71 sq. ft
Included: Yes

Heated: Yes
Finished: Yes
Enclosed: Yes
Contiguous: Yes
Permitted: Yes
Wet space: No
Addition: No
Conversion: No

11 Floor 1 - Pantry



Max Dimensions: 4'11" x 4'2"
Calculated Area: 13 sq. ft
Included: Yes

Heated: Yes
Finished: Yes
Enclosed: Yes
Contiguous: Yes
Permitted: Yes
Wet space: No
Addition: No
Conversion: No

2035 Calle Pattito, Templeton, San Luis Obispo County,
California, United States, 93465

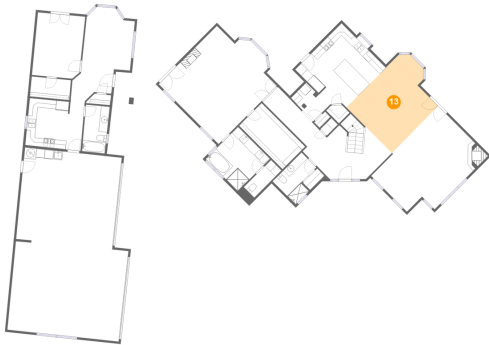
12 Floor 1 - Porch



Max Dimensions: 3'8" x 8'1"
Calculated Area: 31 sq. ft
Included: No

Heated: No
Finished: Yes
Enclosed: No
Contiguous: Yes
Permitted: Yes
Wet space: No
Addition: No
Conversion: No

13 Floor 1 - Dining Area



Max Dimensions: 14'9" x 18'11"
Calculated Area: 252 sq. ft
Included: Yes

Heated: Yes
Finished: Yes
Enclosed: Yes
Contiguous: Yes
Permitted: Yes
Wet space: No
Addition: No
Conversion: No

14 Floor 1 - W.I.C.



Max Dimensions: 7'4" x 14'3"
Calculated Area: 106 sq. ft
Included: Yes

Heated: Yes
Finished: Yes
Enclosed: Yes
Contiguous: Yes
Permitted: Yes
Wet space: No
Addition: No
Conversion: No

2035 Calle Pattito, Templeton, San Luis Obispo County,
California, United States, 93465

15 Floor 1 - WC



Max Dimensions: 8'10" x 3'5"
Calculated Area: 36 sq. ft
Included: Yes

Heated: Yes
Finished: Yes
Enclosed: Yes
Contiguous: Yes
Permitted: Yes
Wet space: Yes
Addition: No
Conversion: No

16 Floor 1 - Bedroom



Max Dimensions: 10'11" x 14'7"
Calculated Area: 158 sq. ft
Included: Yes

Heated: Yes
Finished: Yes
Enclosed: Yes
Contiguous: Yes
Permitted: Yes
Wet space: No
Addition: No
Conversion: No

17 Floor 1 - Eat-in Kitchen



Max Dimensions: 12'11" x 10'11"
Calculated Area: 140 sq. ft
Included: Yes

Heated: Yes
Finished: Yes
Enclosed: Yes
Contiguous: Yes
Permitted: Yes
Wet space: No
Addition: No
Conversion: No

2035 Calle Pattito, Templeton, San Luis Obispo County,
California, United States, 93465

18 Floor 1 - Bath



Max Dimensions: 5'5" x 10'11"
Calculated Area: 59 sq. ft
Included: Yes

Heated: Yes
Finished: Yes
Enclosed: Yes
Contiguous: Yes
Permitted: Yes
Wet space: Yes
Addition: No
Conversion: No

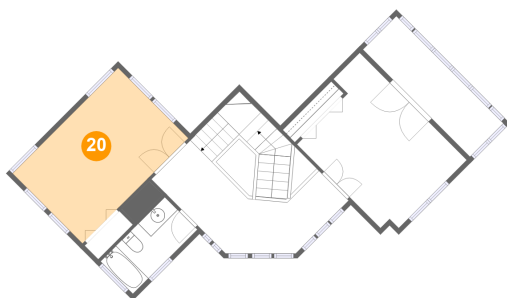
19 Floor 1 - Kitchen



Max Dimensions: 14'6" x 15'6"
Calculated Area: 216 sq. ft
Included: Yes

Heated: Yes
Finished: Yes
Enclosed: Yes
Contiguous: Yes
Permitted: Yes
Wet space: No
Addition: No
Conversion: No

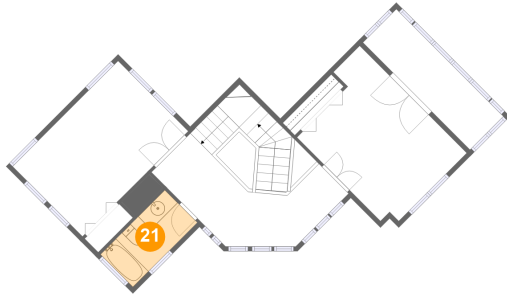
20 Floor 2 - Bedroom



Max Dimensions: 16'3" x 10'10"
Calculated Area: 176 sq. ft
Included: Yes

Heated: Yes
Finished: Yes
Enclosed: Yes
Contiguous: Yes
Permitted: Yes
Wet space: No
Addition: No
Conversion: No

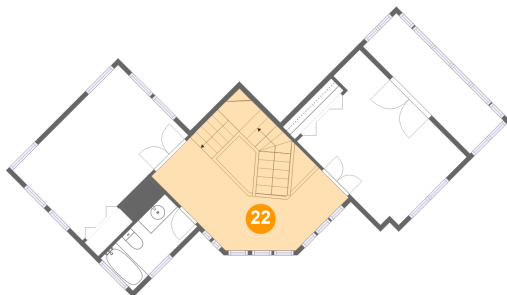
21 Floor 2 - Bath



Max Dimensions: 5'1" x 10'0"
Calculated Area: 50 sq. ft
Included: Yes

Heated: Yes
Finished: Yes
Enclosed: Yes
Contiguous: Yes
Permitted: Yes
Wet space: Yes
Addition: No
Conversion: No

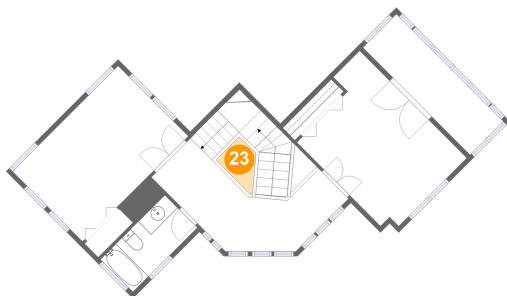
22 Floor 2 - Hall



Max Dimensions: 18'9" x 7'6"
Calculated Area: 214 sq. ft
Included: Yes

Heated: Yes
Finished: Yes
Enclosed: Yes
Contiguous: Yes
Permitted: Yes
Wet space: No
Addition: No
Conversion: No

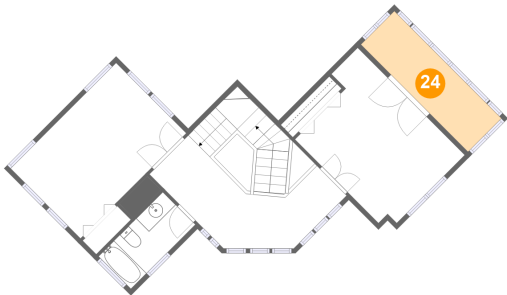
23 Floor 2 - Open To Below



Max Dimensions: 4'3" x 5'1"
Calculated Area: 15 sq. ft
Included: No

Heated: No
Finished: No
Enclosed: No
Contiguous: Yes
Permitted: No
Wet space: No
Addition: No
Conversion: No

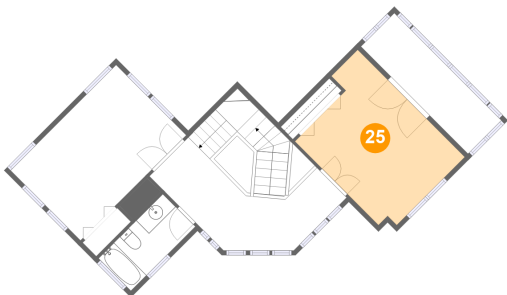
24 Floor 2 - Screened Balcony



Max Dimensions: 5'3" x 16'7"
Calculated Area: 85 sq. ft
Included: No

Heated: No
Finished: Yes
Enclosed: No
Contiguous: Yes
Permitted: Yes
Wet space: No
Addition: No
Conversion: No

25 Floor 2 - Sitting Room



Max Dimensions: 16'6" x 11'11"
Calculated Area: 177 sq. ft
Included: Yes

Heated: Yes
Finished: Yes
Enclosed: Yes
Contiguous: Yes
Permitted: Yes
Wet space: No
Addition: No
Conversion: No