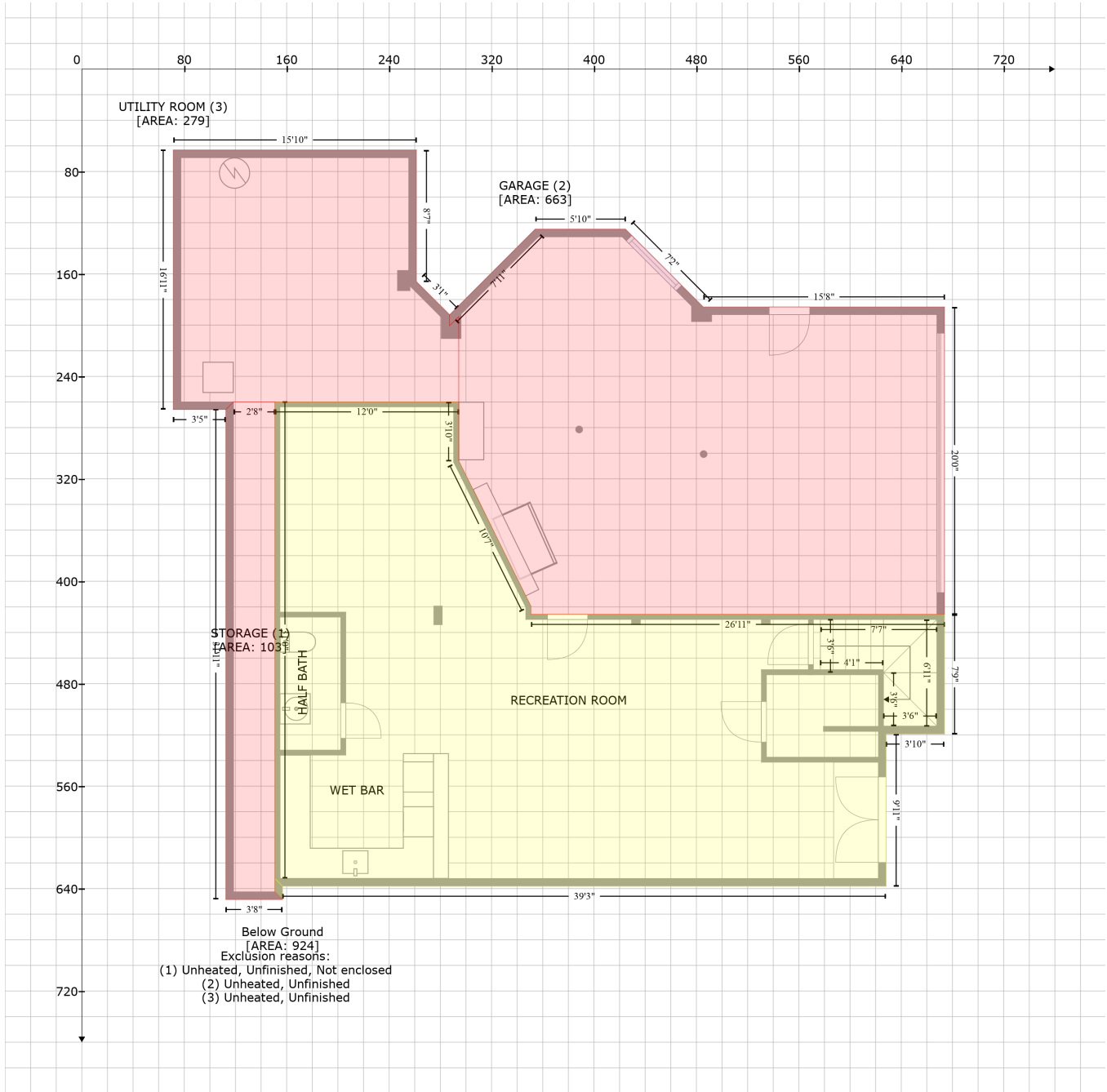


# 119 Sturbridge Drive, Yorktown, Franklin, Williamson County, Tennessee, United States, 37064

Gross Living Area: 3578 sq. ft



Space	Area (sq. ft)	Calculation
Below Ground (Living area)	924	Coordinate Polygon Area Algorithm using inches $-((150.8 + 154.8) * (632.1 - 636.3) + (154.8 + 156.8) * (636.3 - 638.1) + (156.8 + 156.8) * (638.1 - 648.5) + (156.8 + 150.8) * (648.5 - 642.5) + (150.8 + 150.8) * (642.5 - 632.1)) * 0.5 * 0.00694 + -((294.4 + 294.4) * (259.9 - 306) + (294.4 + 350.7) * (306 - 419.4) + (350.7 + 350.7) * (419.4 - 425.9) + (350.7 + 673.8) * (425.9 - 425.9) + (673.8 + 673.8) * (425.9 - 519.3) + (673.8 + 628.1) * (519.3 - 519.3) + (628.1 + 628.1) * (519.3 - 638.1) + (628.1 + 156.8) * (638.1 - 638.1) + (156.8 + 150.8) * (638.1 - 632.1) + (150.8 + 150.8) * (632.1 - 259.9) + (150.8 + 294.4) * (259.9 - 259.9)) * 0.5 * 0.00694$

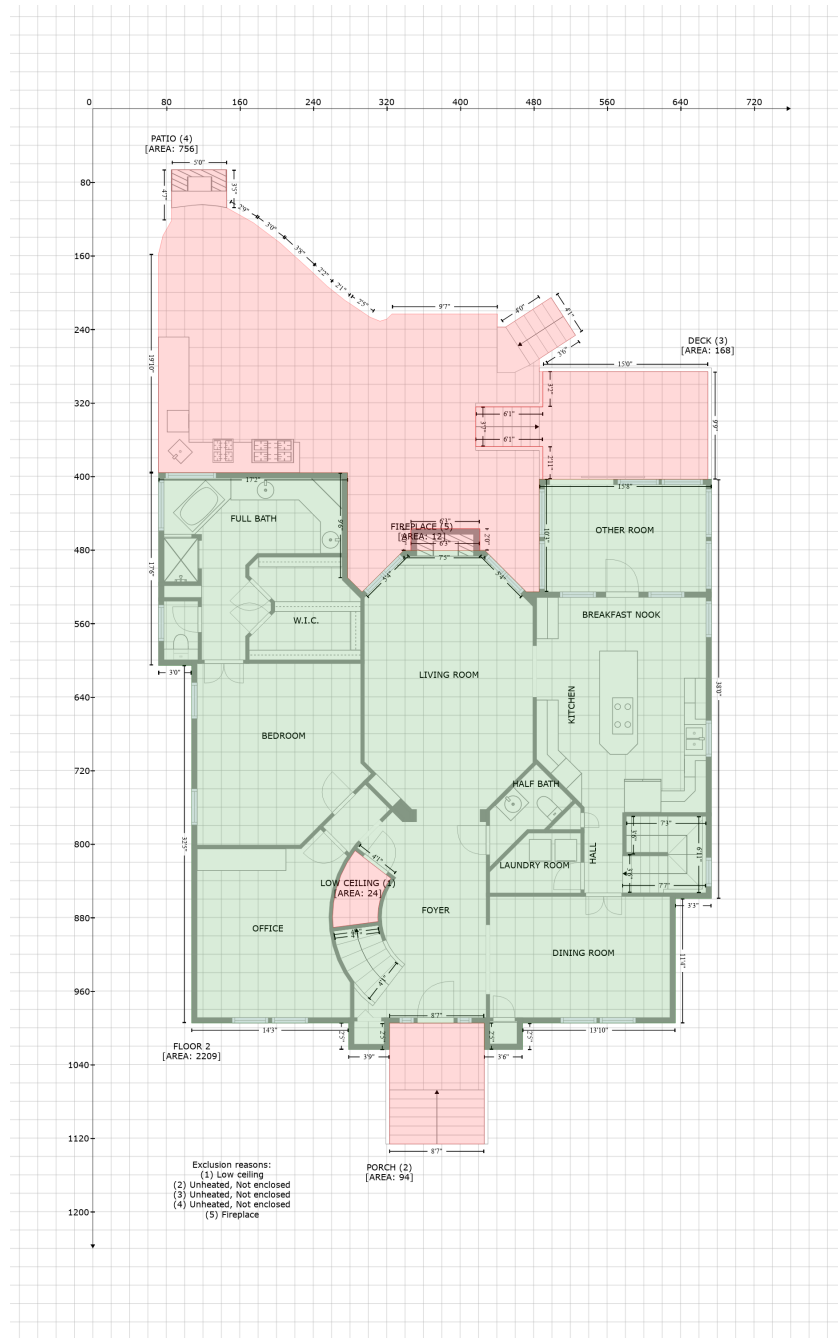
# 119 Sturbridge Drive, Yorktown, Franklin, Williamson County, Tennessee, United States, 37064

Gross Living Area: 3578 sq. ft

Space	Area (sq. ft)	Calculation <small>Coordinate Polygon Area Algorithm using inches</small>
STORAGE (Non-living area)	103	$-\left((150.8 + 150.8) * (259.9 - 642.5) + (150.8 + 156.8) * (642.5 - 648.5) + (156.8 + 112.5) * (648.5 - 648.5) + (112.5 + 112.5) * (648.5 - 265.9) + (112.5 + 118.5) * (265.9 - 259.9) + (118.5 + 150.8) * (259.9 - 259.9)\right) * 0.5 * 0.00694$
GARAGE (Non-living area)	663	$-\left((424.6 + 485.4) * (125.1 - 185.8) + (485.4 + 673.8) * (185.8 - 185.8) + (673.8 + 673.8) * (185.8 - 425.9) + (673.8 + 350.7) * (425.9 - 425.9) + (350.7 + 350.7) * (425.9 - 419.4) + (350.7 + 294.4) * (419.4 - 306) + (294.4 + 294.3) * (306 - 193.3) + (294.3 + 294.3) * (193.3 - 193.3) + (294.3 + 287.2) * (193.3 - 200.4) + (287.2 + 287.2) * (200.4 - 191.9) + (287.2 + 354.1) * (191.9 - 125.1) + (354.1 + 424.6) * (125.1 - 125.1)\right) * 0.5 * 0.00694$
UTILITY ROOM (Non-living area)	279	$-\left((261.3 + 261.3) * (63.2 - 166) + (261.3 + 287.3) * (166 - 191.8) + (287.3 + 287.2) * (191.8 - 191.9) + (287.2 + 287.2) * (191.9 - 200.4) + (287.2 + 294.4) * (200.4 - 193.4) + (294.4 + 294.4) * (193.4 - 306) + (294.4 + 294.4) * (306 - 306) + (294.4 + 294.4) * (306 - 259.9) + (294.4 + 118.5) * (259.9 - 259.9) + (118.5 + 112.5) * (259.9 - 265.9) + (112.5 + 71.4) * (265.9 - 265.9) + (71.4 + 71.4) * (265.9 - 63.2) + (71.4 + 261.3) * (63.2 - 63.2)\right) * 0.5 * 0.00694$

# 119 Sturbridge Drive, Yorktown, Franklin, Williamson County, Tennessee, United States, 37064

Gross Living Area: 3578 sq. ft



Space	Area (sq. ft)	Calculation
FLOOR 2 (Living area)	2209	Coordinate Polygon Area Algorithm using inches $-(277.5 + 277.5) * (396.1 - 510.5) + (277.5 + 293.2) * (510.5 - 525.8) + (293.2 + 338.3) * (525.8 - 480.9) + (338.3 + 427.1) * (480.9 - 480.9) + (427.1 + 472) * (480.9 - 525.8) + (472 + 486.1) * (525.8 - 525.8) + (486.1 + 486.1) * (525.8 - 403.2) + (486.1 + 673.8) * (403.2 - 403.2) + (673.8 + 673.8) * (403.2 - 859.3) + (673.8 + 634.4) * (859.3 - 859.3) + (634.4 + 634.4) * (859.3 - 994.9) + (634.4 + 468) * (994.9 - 994.9) + (468 + 468) * (994.9 - 1023.8) + (468 + 426.3) * (1023.8 - 1023.8) + (426.3 + 426.3) * (1023.8 - 994.9) + (426.3 + 323.1) * (994.9 - 994.9) + (323.1 + 323.1) * (994.9 - 1023.8) + (323.1 + 278.6) * (1023.8 - 1023.8) + (278.6 + 278.6) * (1023.8 - 994.9) +$

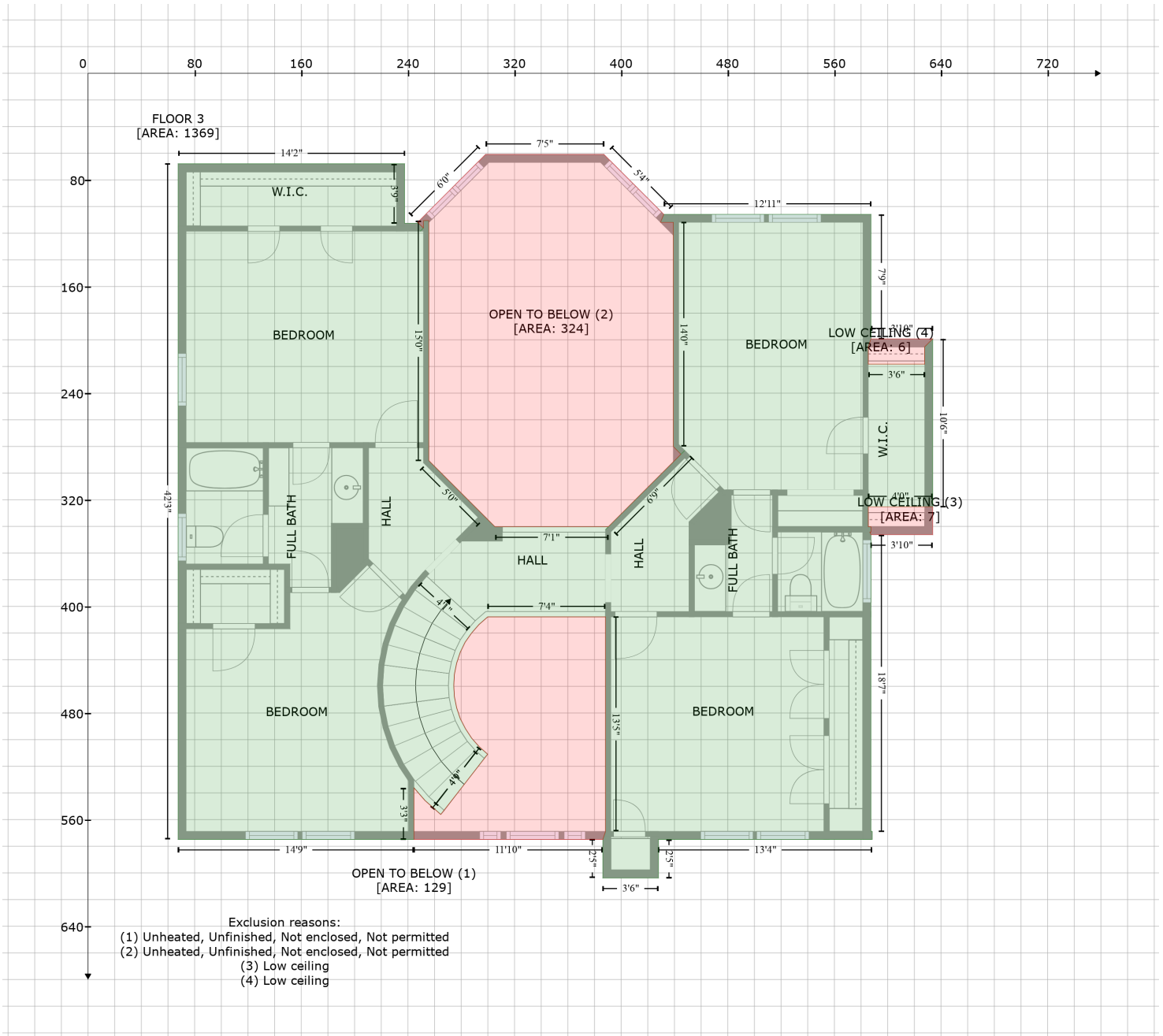
# 119 Sturbridge Drive, Yorktown, Franklin, Williamson County, Tennessee, United States, 37064

Gross Living Area: 3578 sq. ft

Space	Area (sq. ft)	Calculation <small>Coordinate Polygon Area Algorithm using inches</small>
		$(278.6 + 107.6) * (994.9 - 994.9) + (107.6 + 107.6) * (994.9 - 605.9) + (107.6 + 71.4) * (605.9 - 605.9) + (71.4 + 71.4) * (605.9 - 396.1) + (71.4 + 277.5) * (396.1 - 396.1) + 0.5 * 0.00694 + ((285.7 + 285.4) * (807.4 - 807.6) + (285.4 + 277) * (807.6 - 820.4) + (277 + 270) * (820.4 - 834.2) + (270 + 270.1) * (834.2 - 834.4) + (270.1 + 265.1) * (834.4 - 849) + (265.1 + 262.1) * (849 - 864.1) + (262.1 + 262.1) * (864.1 - 864.1) + (262.1 + 261.1) * (864.1 - 879.4) + (261.1 + 261.7) * (879.4 - 890.9) + (261.7 + 310.6) * (890.9 - 884.6) + (310.6 + 310.4) * (884.6 - 879.4) + (310.4 + 310.9) * (879.4 - 870.4) + (310.9 + 312.7) * (870.4 - 861.7) + (312.7 + 315.5) * (861.7 - 853.1) + (315.5 + 319.4) * (853.1 - 845) + (319.4 + 324.6) * (845 - 837.5) + (324.6 + 285.7) * (837.5 - 807.4)) * 0.5 * 0.00694$
LOW CEILING (Non-living area)	24	$-((285.7 + 324.6) * (807.4 - 837.5) + (324.6 + 319.4) * (837.5 - 845) + (319.4 + 315.5) * (845 - 853.1) + (315.5 + 312.7) * (853.1 - 861.7) + (312.7 + 310.9) * (861.7 - 870.4) + (310.9 + 310.4) * (870.4 - 879.4) + (310.4 + 310.6) * (879.4 - 884.6) + (310.6 + 261.7) * (884.6 - 890.9) + (261.7 + 261.1) * (890.9 - 879.4) + (261.1 + 262.1) * (879.4 - 864.1) + (262.1 + 262.1) * (864.1 - 864.1) + (262.1 + 261.1) * (864.1 - 879.4) + (261.1 + 261.7) * (879.4 - 890.9) + (261.7 + 310.6) * (890.9 - 884.6) + (310.6 + 310.4) * (884.6 - 879.4) + (310.4 + 310.9) * (879.4 - 870.4) + (310.9 + 312.7) * (870.4 - 861.7) + (312.7 + 315.5) * (861.7 - 853.1) + (315.5 + 319.4) * (853.1 - 845) + (319.4 + 324.6) * (845 - 837.5) + (324.6 + 285.7) * (837.5 - 807.4)) * 0.5 * 0.00694$
PORCH (Non-living area)	94	$-((426.3 + 426.3) * (994.9 - 1126.5) + (426.3 + 323.1) * (1126.5 - 1126.5) + (323.1 + 323.1) * (1126.5 - 994.9) + (323.1 + 426.3) * (994.9 - 994.9)) * 0.5 * 0.00694$
DECK (Non-living area)	168	$-((669.8 + 669.8) * (286.1 - 403.2) + (669.8 + 490.1) * (403.2 - 403.2) + (490.1 + 490.1) * (403.2 - 367.7) + (490.1 + 416.9) * (367.7 - 367.7) + (416.9 + 416.9) * (367.7 - 324.5) + (416.9 + 490.1) * (324.5 - 324.5) + (490.1 + 490.1) * (324.5 - 286.1) + (490.1 + 669.8) * (286.1 - 286.1)) * 0.5 * 0.00694$
PATIO (Non-living area)	756	$-((145.8 + 145.8) * (66.6 - 107.9) + (145.8 + 174.9) * (107.9 - 124.3) + (174.9 + 203.7) * (124.3 - 146) + (203.7 + 236.1) * (146 - 175.3) + (236.1 + 255.2) * (175.3 - 193.3) + (255.2 + 275) * (193.3 - 209) + (275 + 277.5) * (209 - 210.6) + (277.5 + 301.5) * (210.6 - 226.7) + (301.5 + 301.5) * (226.7 - 226.8) + (301.5 + 312.7) * (226.8 - 231.3) + (312.7 + 319.9) * (231.3 - 229.1) + (319.9 + 325.7) * (229.1 - 223.5) + (325.7 + 440.6) * (223.5 - 223.5) + (440.6 + 440.4) * (223.5 - 237.7) + (440.4 + 449.6) * (237.7 - 237.7) + (449.6 + 490.1) * (237.7 - 211.3) + (490.1 + 499) * (211.3 - 205.6) + (499 + 525.6) * (205.6 - 246.7) + (525.6 + 490.1) * (246.7 - 269.6) + (490.1 + 486.1) * (269.6 - 272.4) + (486.1 + 486.1) * (272.4 - 286.1) + (486.1 + 490.1) * (286.1 - 286.1) + (490.1 + 490.1) * (286.1 - 324.5) + (490.1 + 416.9) * (324.5 - 324.5) + (416.9 + 416.9) * (324.5 - 367.7) + (416.9 + 490.1) * (367.7 - 367.7) + (490.1 + 490.1) * (367.7 - 403.2) + (490.1 + 486.1) * (403.2 - 403.2) + (486.1 + 486.1) * (403.2 - 525.8) + (486.1 + 472) * (525.8 - 525.8) + (472 + 427.1) * (525.8 - 480.9) + (427.1 + 421.4) * (480.9 - 480.9) + (421.4 + 421.4) * (480.9 - 457.1) + (421.4 + 346.4) * (457.1 - 457.1) + (346.4 + 346.4) * (457.1 - 480.9) + (346.4 + 338.3) * (480.9 - 480.9) + (338.3 + 293.2) * (480.9 - 525.8) + (293.2 + 277.5) * (525.8 - 510.5) + (277.5 + 277.5) * (510.5 - 396.1) + (277.5 + 71.4) * (396.1 - 396.1) + (71.4 + 71.4) * (396.1 - 158.5) + (71.4 + 76.5) * (158.5 - 138) + (76.5 + 85.8) * (138 - 121.8) + (85.8 + 85.8) * (121.8 - 66.6) + (85.8 + 145.8) * (66.6 - 66.6)) * 0.5 * 0.00694$
FIREPLACE (Non-living area)	12	$-((421.4 + 421.4) * (457.1 - 480.9) + (421.4 + 346.4) * (480.9 - 480.9) + (346.4 + 346.4) * (480.9 - 457.1) + (346.4 + 421.4) * (457.1 - 457.1)) * 0.5 * 0.00694$

# 119 Sturbridge Drive, Yorktown, Franklin, Williamson County, Tennessee, United States, 37064

Gross Living Area: 3578 sq. ft



Space	Area (sq. ft)	Calculation
FLOOR 3 (Living area)	1369	Coordinate Polygon Area Algorithm using inches $-((237.5 + 237.5) * (67.9 - 112.6) + (237.5 + 246.6) * (112.6 - 112.6) + (246.6 + 247.4) * (112.6 - 111.8) + (247.4 + 251.6) * (111.8 - 116) + (251.6 + 249.1) * (116 - 118.6) + (249.1 + 251.7) * (118.6 - 116.1) + (251.7 + 251.7) * (116.1 - 110.5) + (251.7 + 255.7) * (110.5 - 110.5) + (255.7 + 255.7) * (110.5 - 290.6) + (255.7 + 298.3) * (290.6 - 333.2) + (298.3 + 305.4) * (333.2 - 340.3) + (305.4 + 390.2) * (340.3 - 340.3) + (390.2 + 388.3) * (340.3 - 342.5) + (388.3 + 390.3) * (342.5 - 340.4) + (390.3 + 447.7) * (340.4 - 283.1) + (447.7 + 444.9) * (283.1 - 285.8) + (444.9 + 439.2) * (285.8 - 280.1) + (439.2 + 439.2) * (280.1 - 111.8) + (439.2 + 429.5) * (111.8 - 111.8) + (429.5 + 432) * (111.8 - 105.8) + (432 + 587.4) * (105.8 - 105.8) + (587.4 + 587.4) * (105.8 - 199.3) +$

# 119 Sturbridge Drive, Yorktown, Franklin, Williamson County, Tennessee, United States, 37064

Gross Living Area: 3578 sq. ft

Space	Area (sq. ft)	Calculation <small>Coordinate Polygon Area Algorithm using inches</small>
OPEN TO BELOW (Non-living area)	129	$\begin{aligned} & (587.4 + 585.4) * (199.3 - 205.3) + (585.4 + 585.4) * (205.3 - 218.2) + (585.4 + 627.8) * (218.2 - 218.2) + (627.8 + 627.8) * (218.2 - 205.3) + (627.8 + 633.8) * (205.3 - 199.3) + (633.8 + 633.8) * \\ & (199.3 - 325.3) + (633.8 + 585.4) * (325.3 - 325.3) + (585.4 + 585.4) * (325.3 - 340.2) + (585.4 + 587.4) * (340.2 - 340.2) + (587.4 + 587.4) * (340.2 - 344.2) + (587.4 + 586.6) * (344.2 - 344.2) + \\ & (586.6 + 587.4) * (344.2 - 346.2) + (587.4 + 587.4) * (346.2 - 568.9) + (587.4 + 588.4) * (568.9 - 568.9) + (588.4 + 588.4) * (568.9 - 574.9) + (588.4 + 428) * (574.9 - 574.9) + (428 + 428) * \\ & (574.9 - 603.8) + (428 + 386.3) * (603.8 - 603.8) + (386.3 + 386.3) * (603.8 - 574.9) + (386.3 + 388.3) * (574.9 - 568.9) + (388.3 + 388.3) * (568.9 - 407.9) + (388.3 + 299.9) * (407.9 - 407.9) + \\ & (299.9 + 293.4) * (407.9 - 413.6) + (293.4 + 287.8) * (413.6 - 420) + (287.8 + 282.9) * (420 - 427) + \\ & (282.9 + 279.2) * (427 - 434.6) + (279.2 + 276.6) * (434.6 - 442.7) + (276.6 + 274.9) * (442.7 - 450.9) + (274.9 + 274.4) * (450.9 - 459.4) + (274.4 + 274.9) * (459.4 - 467.9) + (274.9 + 276.6) * \\ & (467.9 - 476.2) + (276.6 + 279.3) * (476.2 - 484.3) + (279.3 + 283.2) * (484.3 - 491.8) + (283.2 + 287.9) * (491.8 - 498.9) + (287.9 + 293.4) * (498.9 - 505.2) + (293.4 + 299.9) * (505.2 - 511) + \\ & (299.9 + 264.6) * (511 - 556.1) + (264.6 + 252.8) * (556.1 - 545.6) + (252.8 + 244.6) * (545.6 - 536.2) + (244.6 + 244.6) * (536.2 - 574.9) + (244.6 + 67.6) * (574.9 - 574.9) + (67.6 + 67.6) * \\ & (574.9 - 67.9) + (67.6 + 237.5) * (67.9 - 67.9) * 0.5 * 0.00694 \end{aligned}$
OPEN TO BELOW (Non-living area)	324	$\begin{aligned} & -((388.3 + 388.3) * (407.9 - 568.9) + (388.3 + 386.3) * (568.9 - 574.9) + (386.3 + 244.6) * (574.9 - 574.9) + (244.6 + 244.6) * (574.9 - 536.2) + (244.6 + 252.8) * (536.2 - 545.6) + (252.8 + 264.6) * \\ & (545.6 - 556.1) + (264.6 + 299.9) * (556.1 - 511) + (299.9 + 293.4) * (511 - 505.2) + (293.4 + 287.9) * (505.2 - 498.9) + (287.9 + 283.2) * (498.9 - 491.8) + (283.2 + 279.3) * (491.8 - 484.3) + \\ & (279.3 + 276.6) * (484.3 - 476.2) + (276.6 + 274.9) * (476.2 - 467.9) + (274.9 + 274.4) * (467.9 - 459.4) + (274.4 + 274.9) * (459.4 - 450.9) + (274.9 + 276.6) * (450.9 - 442.7) + (276.6 + 279.2) * \\ & (442.7 - 434.6) + (279.2 + 282.9) * (434.6 - 427) + (282.9 + 287.8) * (427 - 420) + (287.8 + 293.4) * (420 - 413.6) + (293.4 + 299.9) * (413.6 - 407.9) + (299.9 + 388.3) * (407.9 - 407.9) * 0.5 * \\ & 0.00694 \end{aligned}$
LOW CEILING (Non-living area)	7	$\begin{aligned} & -((387.1 + 432) * (60.9 - 105.8) + (432 + 429.5) * (105.8 - 111.8) + (429.5 + 439.2) * (111.8 - 111.8) + (439.2 + 439.2) * (111.8 - 280.1) + (439.2 + 444.8) * (280.1 - 285.8) + (444.8 + 390.2) * \\ & (285.8 - 340.3) + (390.2 + 305.4) * (340.3 - 340.3) + (305.4 + 298.3) * (340.3 - 333.2) + (298.3 + 255.7) * (333.2 - 290.6) + (255.7 + 255.7) * (290.6 - 110.5) + (255.7 + 251.7) * (110.5 - 110.5) + \\ & (251.7 + 251.7) * (110.5 - 116) + (251.7 + 251.6) * (116 - 116) + (251.6 + 247.4) * (116 - 111.8) + (247.4 + 247.4) * (111.8 - 111.8) + (247.4 + 298.3) * (111.8 - 60.9) + (298.3 + 387.1) * (60.9 - 60.9) * 0.5 * \\ & 0.00694 \end{aligned}$
LOW CEILING (Non-living area)	6	$\begin{aligned} & -((633.8 + 633.8) * (325.3 - 346.2) + (633.8 + 587.4) * (346.2 - 346.2) + (587.4 + 586.6) * (346.2 - 344.2) + (586.6 + 587.4) * (344.2 - 344.2) + (587.4 + 587.4) * (344.2 - 340.2) + (587.4 + 585.4) * \\ & (340.2 - 340.2) + (585.4 + 585.4) * (340.2 - 325.3) + (585.4 + 633.8) * (325.3 - 325.3) * 0.5 * \\ & 0.00694 \end{aligned}$
LOW CEILING (Non-living area)	6	$\begin{aligned} & -((633.8 + 627.8) * (199.3 - 205.3) + (627.8 + 627.8) * (205.3 - 218.2) + (627.8 + 585.4) * (218.2 - 218.2) + (585.4 + 585.4) * (218.2 - 205.3) + (585.4 + 587.4) * (205.3 - 199.3) + (587.4 + 633.8) * \\ & (199.3 - 199.3) * 0.5 * 0.00694 \end{aligned}$