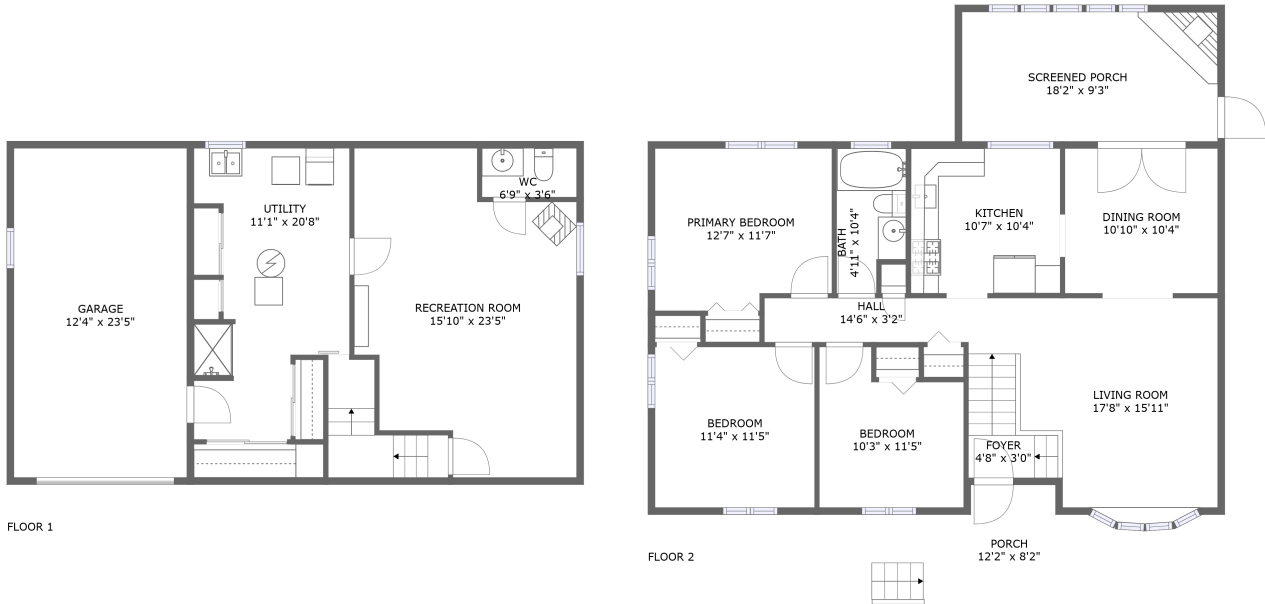


5805 Schell Cir, Aliquippa, PA, US

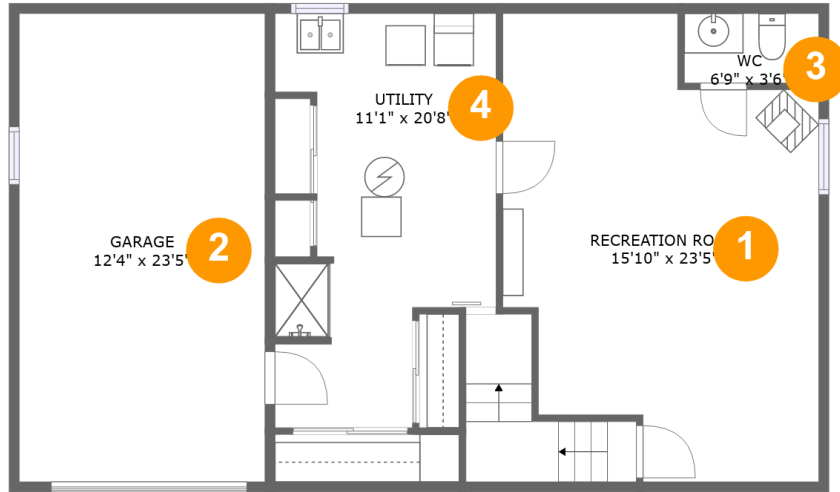


Property Summary

1 garages **3** bedrooms **1** bathrooms **1** half baths

2 floors **1,769** Gross Living Area sqft **2,353** total sqft

5805 Schell Cir, Aliquippa, PA, US



Room Dimensions

Floor 1

Total sqft: 1000

Living area: 688

#	Room name	Dimensions	Area (sqft)	Counted as Living Area
1	Recreation Room	15'10" x 23'5"	310 sq. ft	Yes
2	Garage	12'4" x 23'5"	288 sq. ft	No
3	Wc	6'9" x 3'6"	23 sq. ft	Yes
4	Utility	11'1" x 20'8"	185 sq. ft	Yes

5805 Schell Cir, Aliquippa, PA, US



Room Dimensions

Floor 2

Total sqft: 1353

Living area: 1081

#	Room name	Dimensions	Area (sqft)	Counted as Living Area
5	Bath	4'11" x 10'4"	46 sq. ft	Yes
6	Primary Bedroom	12'7" x 11'7"	139 sq. ft	Yes
7	Porch	12'2" x 8'2"	86 sq. ft	No
8	Bedroom	10'3" x 11'5"	101 sq. ft	Yes
9	Bedroom	11'4" x 11'5"	130 sq. ft	Yes
10	Foyer	4'8" x 3'0"	43 sq. ft	Yes
11	Screened Porch	18'2" x 9'3"	167 sq. ft	No
12	Hall	14'6" x 3'2"	46 sq. ft	Yes
13	Dining Room	10'10" x 10'4"	112 sq. ft	Yes
14	Living Room	17'8" x 15'11"	213 sq. ft	Yes
15	Kitchen	10'7" x 10'4"	109 sq. ft	Yes

5805 Schell Cir, Aliquippa, PA, US

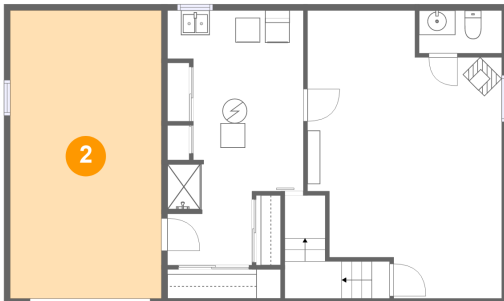
1 Floor 1 - Recreation Room



Dimensions: 15'10" x 23'5"
Area: 310 sq. ft
Counted as Living Area:
Yes

Heated: Yes
Finished: Yes
Enclosed: Yes
Contiguous:
Yes
Permitted: Yes
Wet Space: No
Addition: No
Conversion: No

2 Floor 1 - Garage

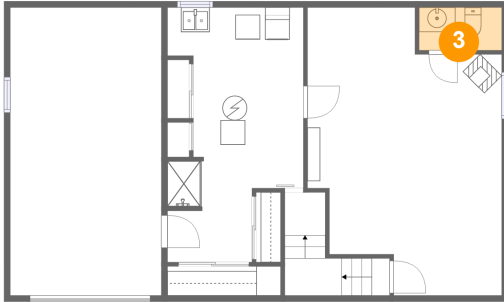


Dimensions: 12'4" x 23'5"
Area: 288 sq. ft
Counted as Living Area: No

Heated: No
Finished: No
Enclosed: Yes
Contiguous: Yes
Permitted: Yes
Wet Space: No
Addition: No
Conversion: No

5805 Schell Cir, Aliquippa, PA, US

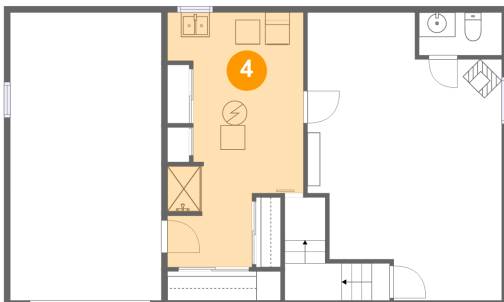
3 Floor 1 - Wc



Dimensions: 6'9" x 3'6"
Area: 23 sq. ft
Counted as Living Area:
Yes

Heated: Yes
Finished: Yes
Enclosed: Yes
Contiguous:
Yes
Permitted: Yes
Wet Space: Yes
Addition: No
Conversion: No

4 Floor 1 - Utility



Dimensions: 11'1" x 20'8"
Area: 185 sq. ft
Counted as Living Area:
Yes

Heated: Yes
Finished: Yes
Enclosed: Yes
Contiguous:
Yes
Permitted: Yes
Wet Space: No
Addition: No
Conversion: No

5 Floor 2 - Bath



Dimensions: 4'11" x 10'4"
Area: 46 sq. ft
Counted as Living Area:
Yes

Heated: Yes
Finished: Yes
Enclosed: Yes
Contiguous:
Yes
Permitted: Yes
Wet Space: Yes
Addition: No
Conversion: No

5805 Schell Cir, Aliquippa, PA, US

6 Floor 2 - Primary Bedroom



Dimensions: 12'7" x 11'7"
Area: 139 sq. ft
Counted as Living Area:
Yes

Heated: Yes
Finished: Yes
Enclosed: Yes
Contiguous:
Yes
Permitted: Yes
Wet Space: No
Addition: No
Conversion: No

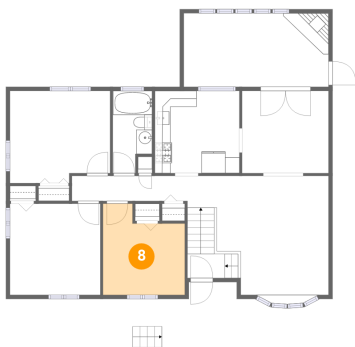
7 Floor 2 - Porch



Dimensions: 12'2" x 8'2"
Area: 86 sq. ft
Counted as Living Area: No

Heated: No
Finished: Yes
Enclosed: No
Contiguous: Yes
Permitted: Yes
Wet Space: No
Addition: No
Conversion: No

8 Floor 2 - Bedroom



Dimensions: 10'3" x 11'5"
Area: 101 sq. ft
Counted as Living Area:
Yes

Heated: Yes
Finished: Yes
Enclosed: Yes
Contiguous:
Yes
Permitted: Yes
Wet Space: No
Addition: No
Conversion: No

5805 Schell Cir, Aliquippa, PA, US

9 Floor 2 - Bedroom



Dimensions: 11'4" x 11'5"
Area: 130 sq. ft
Counted as Living Area:
Yes

Heated: Yes
Finished: Yes
Enclosed: Yes
Contiguous:
Yes
Permitted: Yes
Wet Space: No
Addition: No
Conversion: No

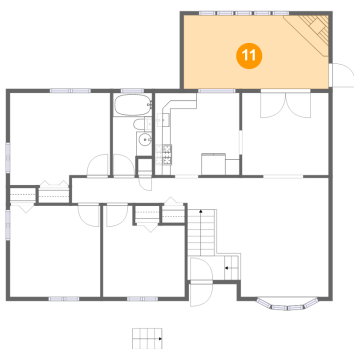
10 Floor 2 - Foyer



Dimensions: 4'8" x 3'0"
Area: 43 sq. ft
Counted as Living Area:
Yes

Heated: Yes
Finished: Yes
Enclosed: Yes
Contiguous:
Yes
Permitted: Yes
Wet Space: No
Addition: No
Conversion: No

11 Floor 2 - Screened Porch

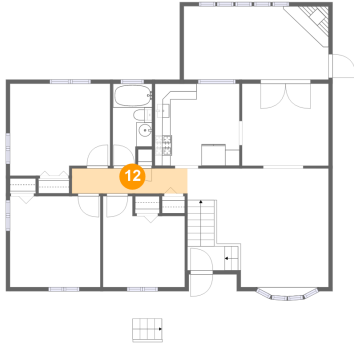


Dimensions: 18'2" x 9'3"
Area: 167 sq. ft
Counted as Living Area: No

Heated: No
Finished: Yes
Enclosed: No
Contiguous: Yes
Permitted: Yes
Wet Space: No
Addition: No
Conversion: No

5805 Schell Cir, Aliquippa, PA, US

12 Floor 2 - Hall



Dimensions: 14'6" x 3'2"
Area: 46 sq. ft
Counted as Living Area:
Yes

Heated: Yes
Finished: Yes
Enclosed: Yes
Contiguous:
Yes
Permitted: Yes
Wet Space: No
Addition: No
Conversion: No

13 Floor 2 - Dining Room



Dimensions: 10'10" x 10'4"
Area: 112 sq. ft
Counted as Living Area:
Yes

Heated: Yes
Finished: Yes
Enclosed: Yes
Contiguous:
Yes
Permitted: Yes
Wet Space: No
Addition: No
Conversion: No

14 Floor 2 - Living Room

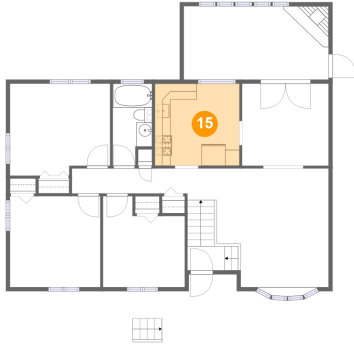


Dimensions: 17'8" x 15'11"
Area: 213 sq. ft
Counted as Living Area:
Yes

Heated: Yes
Finished: Yes
Enclosed: Yes
Contiguous:
Yes
Permitted: Yes
Wet Space: No
Addition: No
Conversion: No

5805 Schell Cir, Aliquippa, PA, US

15 Floor 2 - Kitchen



Dimensions: 10'7" x 10'4"
Area: 109 sq. ft
Counted as Living Area:
Yes

Heated: Yes
Finished: Yes
Enclosed: Yes
Contiguous:
Yes
Permitted: Yes
Wet Space: No
Addition: No
Conversion: No