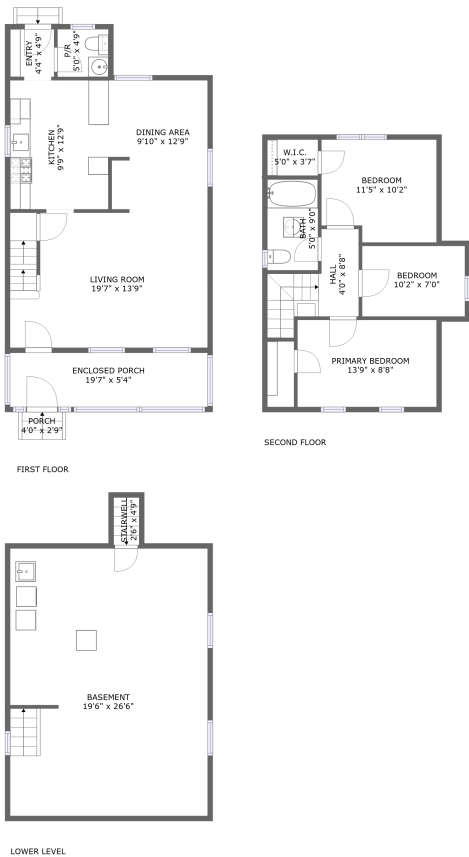




102 James Street, Bloomfield, Essex County, New Jersey, United States, 07003




Property summary


 **0** Garages


 **3** Bedrooms

 **1** Bathrooms

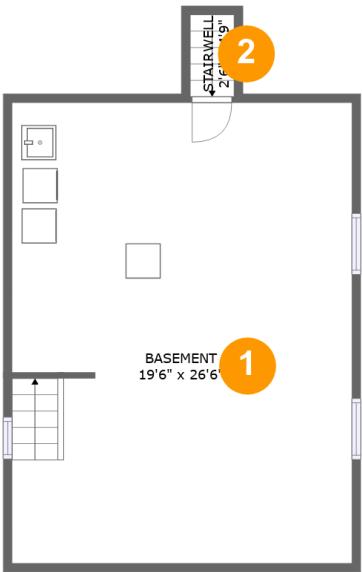
 **1** Half baths

 **3** Floors

 **1,131** Gross living area sqft

 **1,846** Total sqft

102 James Street, Bloomfield, Essex County, New Jersey, United States, 07003



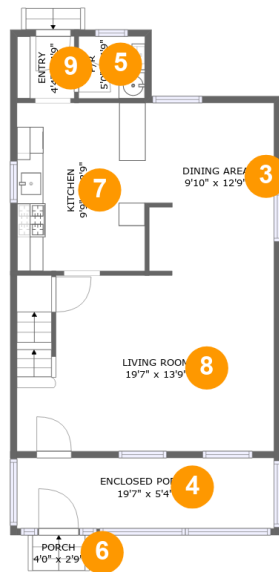
Room dimensions

Floor 1

Total sqft: 583 Living area: 0

#		Dimensions	sqft	Counted as living area
1	Basement	19'6" x 26'6"	517 sq. ft	No
2	Stairwell	2'6" x 4'9"	12 sq. ft	No

102 James Street, Bloomfield, Essex County, New Jersey, United States, 07003



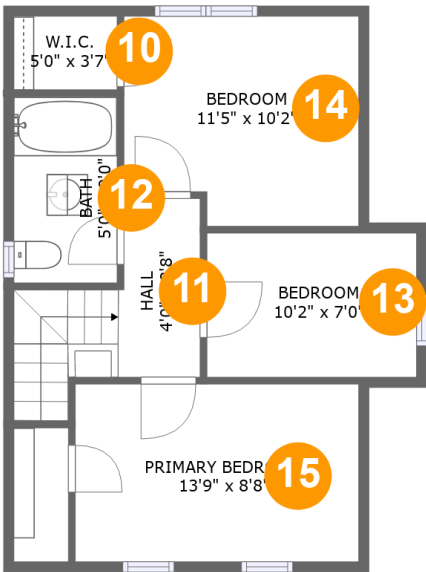
Room dimensions

Floor 2

Total sqft: 752 Living area: 620

#		Dimensions	sqft	Counted as living area
3	Dining Area	9'10" x 12'9"	123 sq. ft	Yes
4	Enclosed Porch	19'7" x 5'4"	105 sq. ft	No
5	P/R	5'0" x 4'9"	24 sq. ft	Yes
6	Porch	4'0" x 2'9"	11 sq. ft	No
7	Kitchen	9'9" x 12'9"	125 sq. ft	Yes
8	Living Room	19'7" x 13'9"	262 sq. ft	Yes
9	Entry	4'4" x 4'9"	21 sq. ft	Yes

102 James Street, Bloomfield, Essex County, New Jersey, United States, 07003



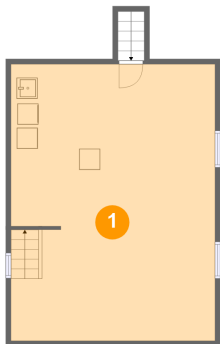
Room dimensions

Floor 3 Total sqft: 511 Living area: 511

#		Dimensions	sqft	Counted as living area
10	W.I.C.	5'0" x 3'7"	18 sq. ft	Yes
11	Hall	4'0" x 8'8"	60 sq. ft	Yes
12	Bath	5'0" x 9'0"	45 sq. ft	Yes
13	Bedroom	10'2" x 7'0"	71 sq. ft	Yes
14	Bedroom	11'5" x 10'2"	110 sq. ft	Yes
15	Primary Bedroom	13'9" x 8'8"	119 sq. ft	Yes

102 James Street, Bloomfield, Essex County, New Jersey, United States, 07003

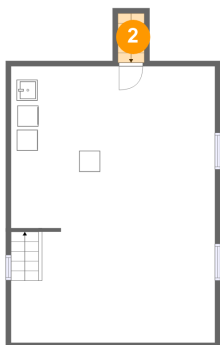
1 Floor 1 - Basement



Dimensions: 19'6" x 26'6"
Area: 517 sq. ft
Counted as living area: No

Heated: Yes
Finished: No
Enclosed: Yes
Contiguous: Yes
Permitted: Yes
Wet space: No
Addition: No
Conversion: No

2 Floor 1 - Stairwell



Dimensions: 2'6" x 4'9"
Area: 12 sq. ft
Counted as living area: No

Heated: No
Finished: No
Enclosed: No
Contiguous: Yes
Permitted: No
Wet space: No
Addition: No
Conversion: No

102 James Street, Bloomfield, Essex County, New Jersey, United States, 07003

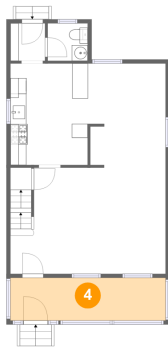
3 Floor 2 - Dining Area



Dimensions: 9'10" x 12'9"
Area: 123 sq. ft
Counted as living area: Yes

Heated: Yes
Finished: Yes
Enclosed: Yes
Contiguous: Yes
Permitted: Yes
Wet space: No
Addition: No
Conversion: No

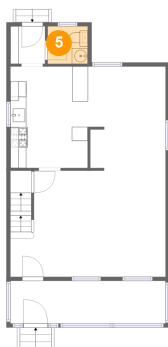
4 Floor 2 - Enclosed Porch



Dimensions: 19'7" x 5'4"
Area: 105 sq. ft
Counted as living area: No

Heated: No
Finished: Yes
Enclosed: No
Contiguous: Yes
Permitted: Yes
Wet space: No
Addition: No
Conversion: No

5 Floor 2 - P/R

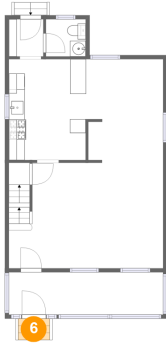


Dimensions: 5'0" x 4'9"
Area: 24 sq. ft
Counted as living area: Yes

Heated: Yes
Finished: Yes
Enclosed: Yes
Contiguous: Yes
Permitted: Yes
Wet space: Yes
Addition: No
Conversion: No

102 James Street, Bloomfield, Essex County, New Jersey, United States, 07003

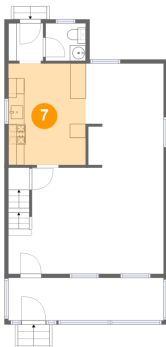
6 Floor 2 - Porch



Dimensions: 4'0" x 2'9"
Area: 11 sq. ft
Counted as living area: No

Heated: No
Finished: Yes
Enclosed: No
Contiguous: Yes
Permitted: Yes
Wet space: No
Addition: No
Conversion: No

7 Floor 2 - Kitchen



Dimensions: 9'9" x 12'9"
Area: 125 sq. ft
Counted as living area: Yes

Heated: Yes
Finished: Yes
Enclosed: Yes
Contiguous: Yes
Permitted: Yes
Wet space: No
Addition: No
Conversion: No

8 Floor 2 - Living Room

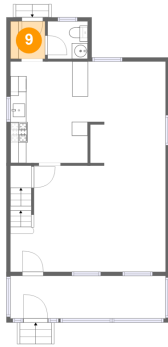


Dimensions: 19'7" x 13'9"
Area: 262 sq. ft
Counted as living area: Yes

Heated: Yes
Finished: Yes
Enclosed: Yes
Contiguous: Yes
Permitted: Yes
Wet space: No
Addition: No
Conversion: No

102 James Street, Bloomfield, Essex County, New Jersey, United States, 07003

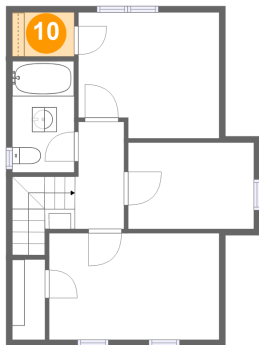
9 Floor 2 - Entry



Dimensions: 4'4" x 4'9"
Area: 21 sq. ft
Counted as living area: Yes

Heated: Yes
Finished: Yes
Enclosed: Yes
Contiguous: Yes
Permitted: Yes
Wet space: No
Addition: No
Conversion: No

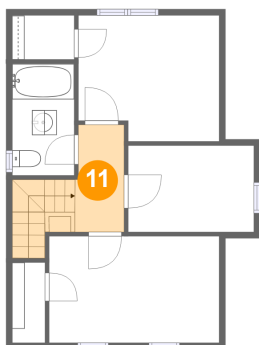
10 Floor 3 - W.I.C.



Dimensions: 5'0" x 3'7"
Area: 18 sq. ft
Counted as living area: Yes

Heated: Yes
Finished: Yes
Enclosed: Yes
Contiguous: Yes
Permitted: Yes
Wet space: No
Addition: No
Conversion: No

11 Floor 3 - Hall

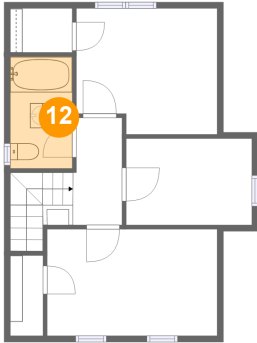


Dimensions: 4'0" x 8'8"
Area: 60 sq. ft
Counted as living area: Yes

Heated: Yes
Finished: Yes
Enclosed: Yes
Contiguous: Yes
Permitted: Yes
Wet space: No
Addition: No
Conversion: No

102 James Street, Bloomfield, Essex County, New Jersey, United States, 07003

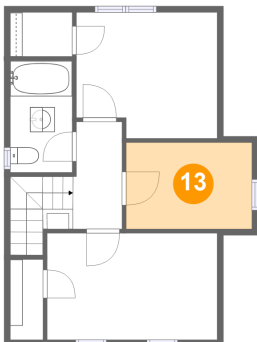
12 Floor 3 - Bath



Dimensions: 5'0" x 9'0"
Area: 45 sq. ft
Counted as living area: Yes

Heated: Yes
Finished: Yes
Enclosed: Yes
Contiguous: Yes
Permitted: Yes
Wet space: Yes
Addition: No
Conversion: No

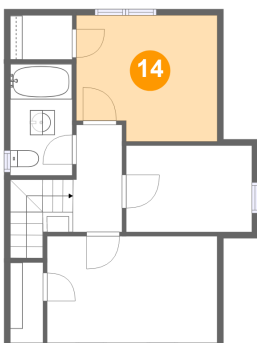
13 Floor 3 - Bedroom



Dimensions: 10'2" x 7'0"
Area: 71 sq. ft
Counted as living area: Yes

Heated: Yes
Finished: Yes
Enclosed: Yes
Contiguous: Yes
Permitted: Yes
Wet space: No
Addition: No
Conversion: No

14 Floor 3 - Bedroom

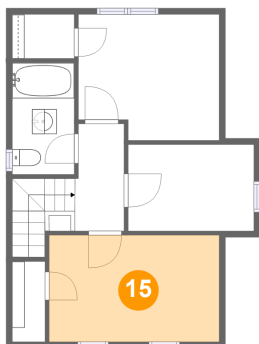


Dimensions: 11'5" x 10'2"
Area: 110 sq. ft
Counted as living area: Yes

Heated: Yes
Finished: Yes
Enclosed: Yes
Contiguous: Yes
Permitted: Yes
Wet space: No
Addition: No
Conversion: No

102 James Street, Bloomfield, Essex County, New Jersey, United States, 07003

15 Floor 3 - Primary Bedroom



Dimensions: 13'9" x 8'8"

Area: 119 sq. ft

Counted as living area: Yes

Heated: Yes

Finished: Yes

Enclosed: Yes

Contiguous: Yes

Permitted: Yes

Wet space: No

Addition: No

Conversion: No