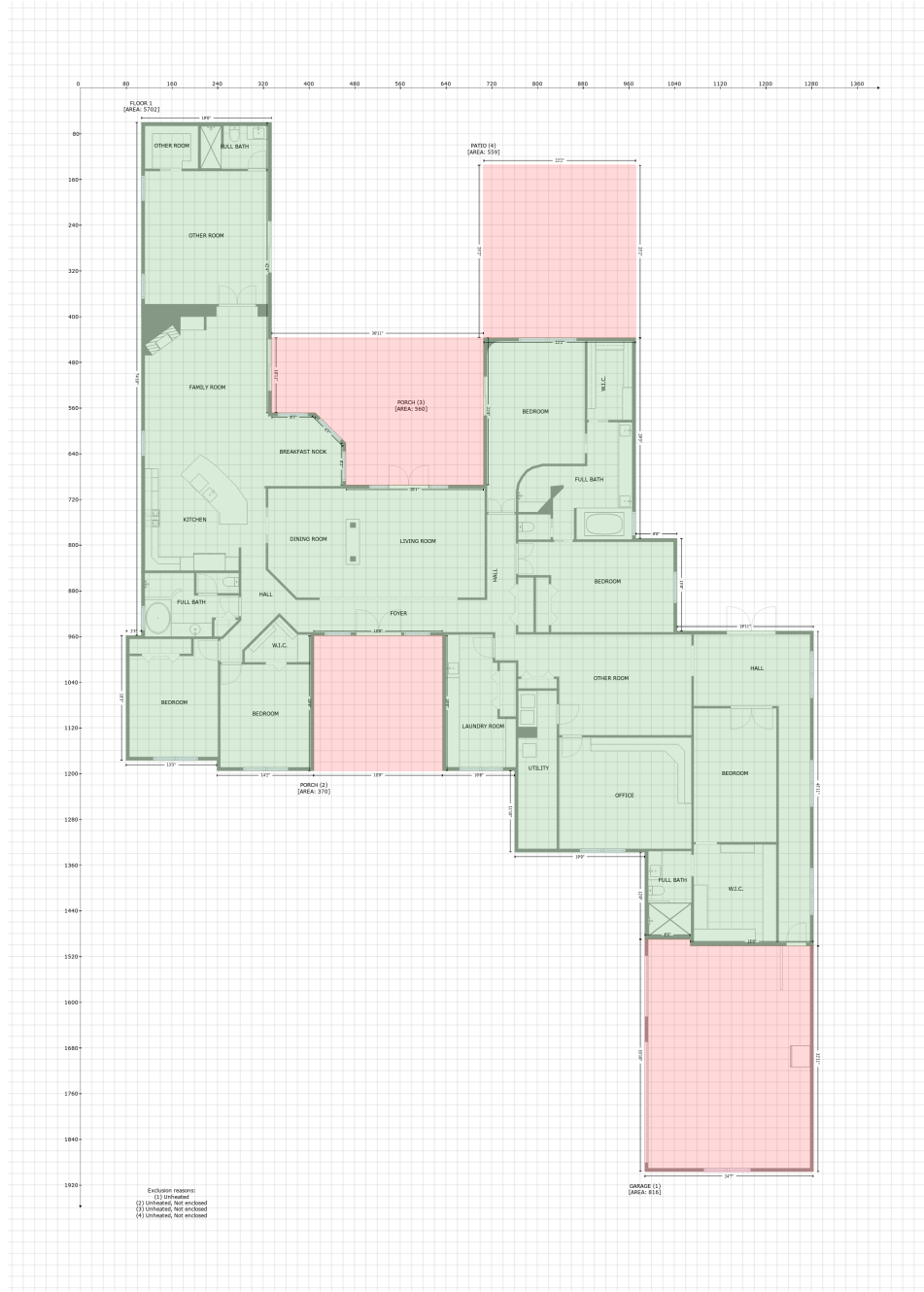


201 Bluff View Drive, Belleair Bluffs, Pinellas County, Florida, United States, 33770

Gross Living Area: 5702 sq. ft



Space	Area (sq. ft)	Calculation
FLOOR 1 (Living area)	5702	Coordinate Polygon Area Algorithm using inches $-((334.8 + 334.8) * (60.6 - 568.9) + (334.8 + 411.3) * (568.9 - 568.9) + (411.3 + 464.9) * (568.9 - 621.4) + (464.9 + 464.9) * (621.4 - 695.3) + (464.9 + 706.1) * (695.3 - 695.3) + (706.1 + 706.1) * (695.3 - 437.5) + (706.1 + 972.4) * (437.5 - 437.5) + (972.4 + 972.4) * (437.5 - 788.6) + (972.4 + 1044.7) * (788.6 - 788.6) + (1044.7 + 1044.7) * (788.6 - 950.7) + (1044.7 + 1283.7) * (950.7 - 950.7) + (1283.7 + 1283.7) * (950.7 - 1501.8) + (1283.7 + 1068.1) * (1501.8 - 1501.8) + (1068.1 + 1068.1) * (1501.8 - 1490.3) + (1068.1 + 988.4) * (1490.3 - 1490.3) + (988.4 + 988.4) * (1490.3 - 1337.7) + (988.4 + 760.7) * (1337.7 - 1337.7) + (760.7 + 760.7) * (1337.7 - 1195.3) + (760.7 +$

201 Bluff View Drive, Belleair Bluffs, Pinellas County, Florida, United States, 33770

Gross Living Area: 5702 sq. ft

Space	Area (sq. ft)	Calculation <small>Coordinate Polygon Area Algorithm using inches</small>
		$634.3 * (1195.3 - 1195.3) + (634.3 + 634.3) * (1195.3 - 958.7) + (634.3 + 408.8) * (958.7 - 958.7) + (408.8 + 408.8) * (958.7 - 1195.3) + (408.8 + 239.1) * (1195.3 - 1195.3) + (239.1 + 239.1) * (1195.3 - 1177.1) + (239.1 + 80) * (1177.1 - 1177.1) + (80 + 80) * (1177.1 - 958.6) + (80 + 106.8) * (958.6 - 958.6) + (106.8 + 106.8) * (958.6 - 60.6) + (106.8 + 334.8) * (60.6 - 60.6) * 0.5 * 0.00694$
GARAGE (Non-living area)	816	$-((1068.1 + 1068.1) * (1490.3 - 1501.8) + (1068.1 + 1283.7) * (1501.8 - 1501.8) + (1283.7 + 1283.7) * (1501.8 - 1896.7) + (1283.7 + 988.4) * (1896.7 - 1896.7) + (988.4 + 988.4) * (1896.7 - 1490.3) + (988.4 + 1068.1) * (1490.3 - 1490.3)) * 0.5 * 0.00694$
PORCH (Non-living area)	370	$-((634.3 + 634.3) * (958.7 - 1195.3) + (634.3 + 408.8) * (1195.3 - 1195.3) + (408.8 + 408.8) * (1195.3 - 958.7) + (408.8 + 634.3) * (958.7 - 958.7)) * 0.5 * 0.00694$
PORCH (Non-living area)	560	$-((706.1 + 706.1) * (437.5 - 695.3) + (706.1 + 464.9) * (695.3 - 695.3) + (464.9 + 464.9) * (695.3 - 621.4) + (464.9 + 411.3) * (621.4 - 568.9) + (411.3 + 334.8) * (568.9 - 568.9) + (334.8 + 334.8) * (568.9 - 437.5) + (334.8 + 706.1) * (437.5 - 437.5)) * 0.5 * 0.00694$
PATIO (Non-living area)	559	$-((972.4 + 972.4) * (135.2 - 437.5) + (972.4 + 706.1) * (437.5 - 437.5) + (706.1 + 706.1) * (437.5 - 135.2) + (706.1 + 972.4) * (135.2 - 135.2)) * 0.5 * 0.00694$