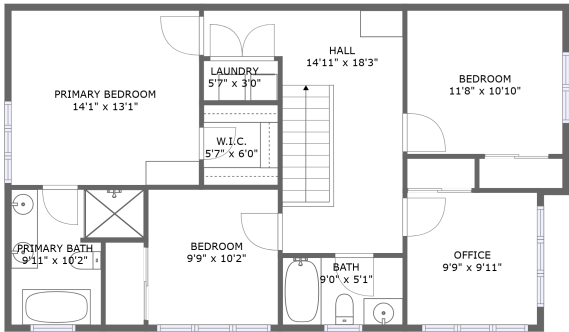
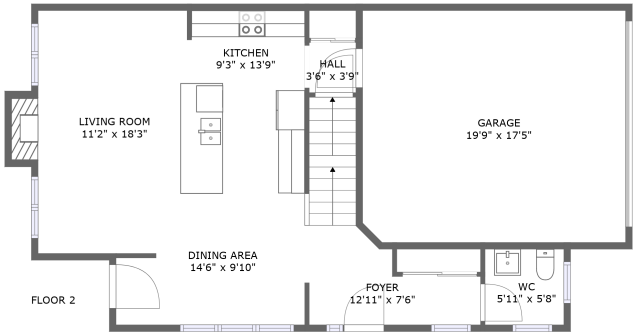
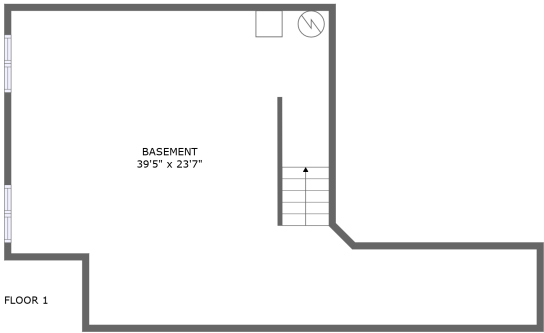


Home report

929 Shimmerton Circle, Bridlewood, Kanata, Ontario, Canada, K2M 0L4



FLOOR 3



FLOOR 1

Property summary



1 Garages



3 Bedrooms



2 Bathrooms



1 Half baths



3 Floors



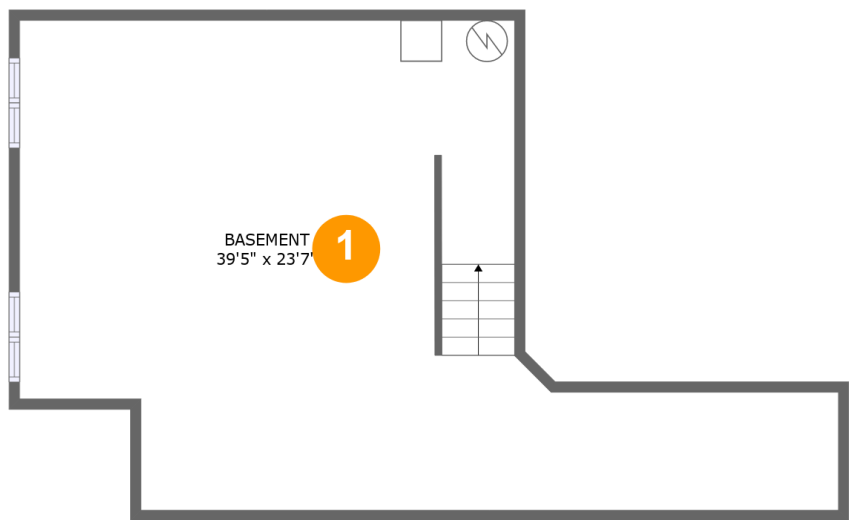
1,712 Gross living area sqft



2,774 Total sqft

Home report

929 Shimmerton Circle, Bridlewood, Kanata, Ontario, Canada,  
K2M 0L4



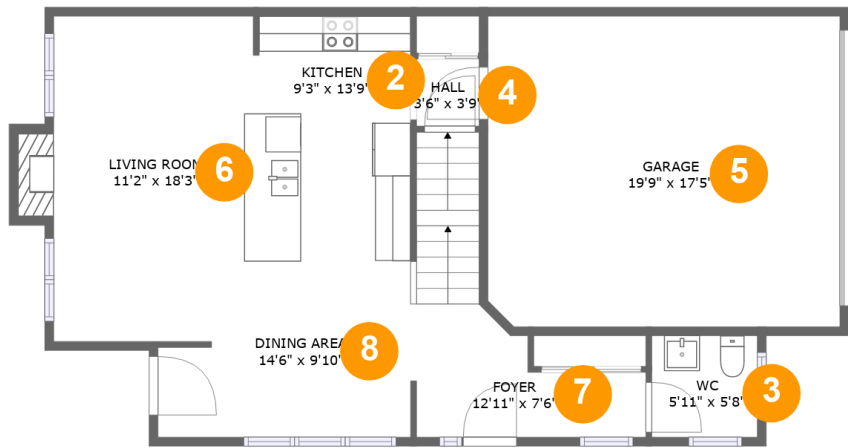
Room dimensions

Floor 1 Total sqft: 687    Living area: 0

#		Dimensions	sqft	Counted as living area
1	Basement	39'5" x 23'7"	623 sq. ft	No

Home report

929 Shimmerton Circle, Bridlewood, Kanata, Ontario, Canada,  
K2M 0L4



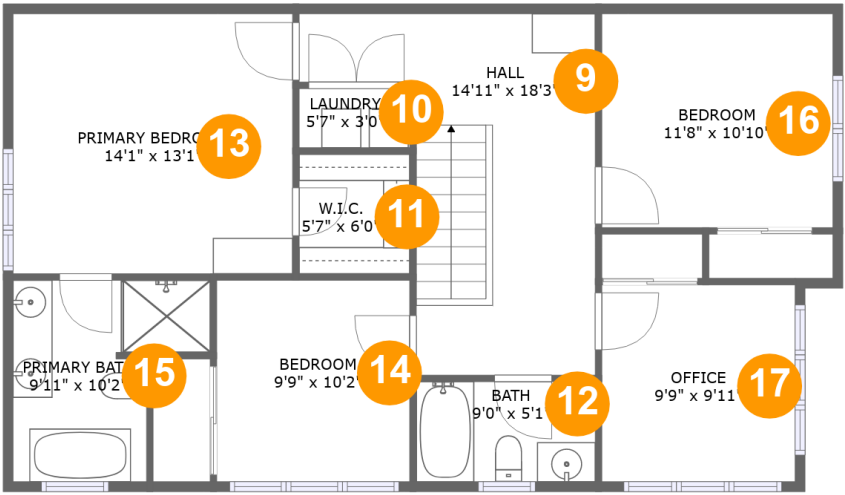
Room dimensions

Floor 2 Total sqft: 1062    Living area: 687

#		Dimensions	sqft	Counted as living area
2	Kitchen	9'3" x 13'9"	125 sq. ft	Yes
3	WC	5'11" x 5'8"	34 sq. ft	Yes
4	Hall	3'6" x 3'9"	13 sq. ft	Yes
5	Garage	19'9" x 17'5"	343 sq. ft	No
6	Living Room	11'2" x 18'3"	199 sq. ft	Yes
7	Foyer	12'11" x 7'6"	101 sq. ft	Yes
8	Dining Area	14'6" x 9'10"	128 sq. ft	Yes

Home report

929 Shimmerton Circle, Bridlewood, Kanata, Ontario, Canada,  
K2M 0L4



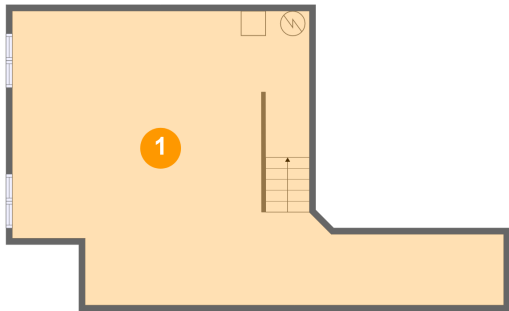
Room dimensions

Floor 3 Total sqft: 1025    Living area: 1025

#		Dimensions	sqft	Counted as living area
9	Hall	14'11" x 18'3"	185 sq. ft	Yes
10	Laundry	5'7" x 3'0"	17 sq. ft	Yes
11	W.I.C.	5'7" x 6'0"	34 sq. ft	Yes
12	Bath	9'0" x 5'1"	46 sq. ft	Yes
13	Primary Bedroom	14'1" x 13'1"	185 sq. ft	Yes
14	Bedroom	9'9" x 10'2"	99 sq. ft	Yes
15	Primary Bath	9'11" x 10'2"	80 sq. ft	Yes
16	Bedroom	11'8" x 10'10"	126 sq. ft	Yes
17	Office	9'9" x 9'11"	97 sq. ft	Yes

929 Shimmerton Circle, Bridlewood, Kanata, Ontario, Canada,  
K2M 0L4

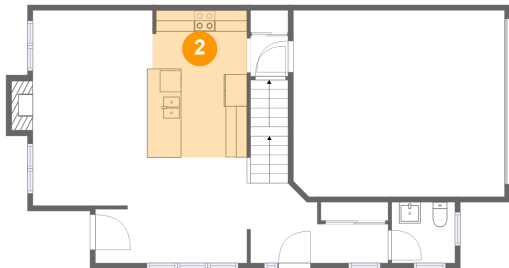
1 Floor 1 - Basement



Dimensions: 39'5" x 23'7"  
Area: 623 sq. ft  
Counted as living area: No

Heated: Yes  
Finished: No  
Enclosed: Yes  
Contiguous: Yes  
Permitted: Yes  
Wet space: No  
Addition: No  
Conversion: No

2 Floor 2 - Kitchen



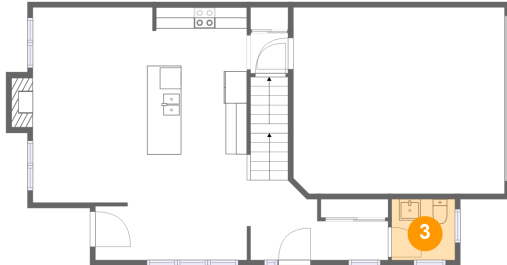
Dimensions: 9'3" x 13'9"  
Area: 125 sq. ft  
Counted as living area: Yes

Heated: Yes  
Finished: Yes  
Enclosed: Yes  
Contiguous: Yes  
Permitted: Yes  
Wet space: No  
Addition: No  
Conversion: No

## Home report

929 Shimmerton Circle, Bridlewood, Kanata, Ontario, Canada,  
K2M 0L4

### 3 Floor 2 - WC



Dimensions: 5'11" x 5'8"  
Area: 34 sq. ft  
Counted as living area: Yes

Heated: Yes  
Finished: Yes  
Enclosed: Yes  
Contiguous: Yes  
Permitted: Yes  
Wet space: Yes  
Addition: No  
Conversion: No

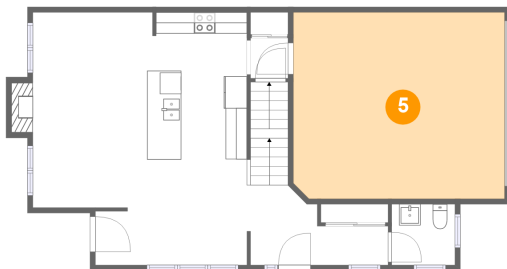
### 4 Floor 2 - Hall



Dimensions: 3'6" x 3'9"  
Area: 13 sq. ft  
Counted as living area: Yes

Heated: Yes  
Finished: Yes  
Enclosed: Yes  
Contiguous: Yes  
Permitted: Yes  
Wet space: No  
Addition: No  
Conversion: No

### 5 Floor 2 - Garage



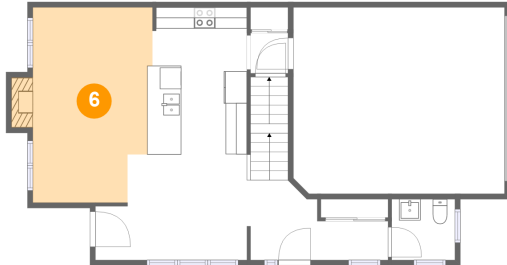
Dimensions: 19'9" x 17'5"  
Area: 343 sq. ft  
Counted as living area: No

Heated: No  
Finished: No  
Enclosed: Yes  
Contiguous: Yes  
Permitted: Yes  
Wet space: No  
Addition: No  
Conversion: No

## Home report

929 Shimmerton Circle, Bridlewood, Kanata, Ontario, Canada,  
K2M 0L4

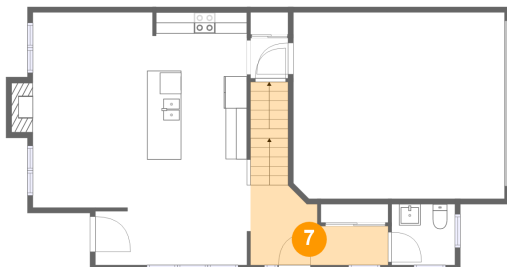
### 6 Floor 2 - Living Room



Dimensions: 11'2" x 18'3"  
Area: 199 sq. ft  
Counted as living area: Yes

Heated: Yes  
Finished: Yes  
Enclosed: Yes  
Contiguous: Yes  
Permitted: Yes  
Wet space: No  
Addition: No  
Conversion: No

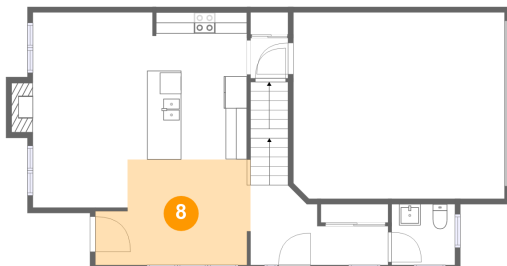
### 7 Floor 2 - Foyer



Dimensions: 12'11" x 7'6"  
Area: 101 sq. ft  
Counted as living area: Yes

Heated: Yes  
Finished: Yes  
Enclosed: Yes  
Contiguous: Yes  
Permitted: Yes  
Wet space: No  
Addition: No  
Conversion: No

### 8 Floor 2 - Dining Area



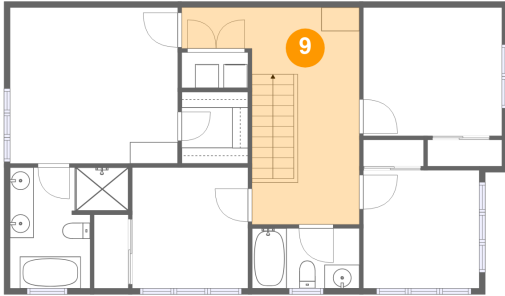
Dimensions: 14'6" x 9'10"  
Area: 128 sq. ft  
Counted as living area: Yes

Heated: Yes  
Finished: Yes  
Enclosed: Yes  
Contiguous: Yes  
Permitted: Yes  
Wet space: No  
Addition: No  
Conversion: No

## Home report

929 Shimmerton Circle, Bridlewood, Kanata, Ontario, Canada,  
K2M 0L4

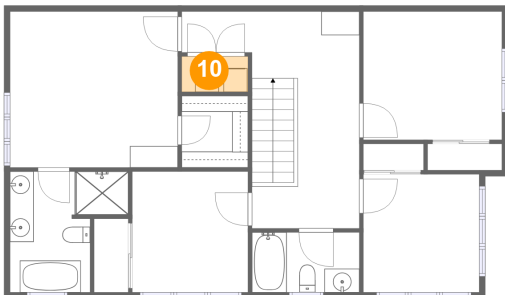
### 9 Floor 3 - Hall



Dimensions: 14'11" x 18'3"  
Area: 185 sq. ft  
Counted as living area: Yes

Heated: Yes  
Finished: Yes  
Enclosed: Yes  
Contiguous: Yes  
Permitted: Yes  
Wet space: No  
Addition: No  
Conversion: No

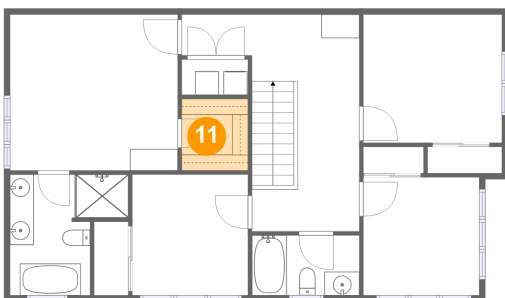
### 10 Floor 3 - Laundry



Dimensions: 5'7" x 3'0"  
Area: 17 sq. ft  
Counted as living area: Yes

Heated: Yes  
Finished: Yes  
Enclosed: Yes  
Contiguous: Yes  
Permitted: Yes  
Wet space: No  
Addition: No  
Conversion: No

### 11 Floor 3 - W.I.C.



Dimensions: 5'7" x 6'0"  
Area: 34 sq. ft  
Counted as living area: Yes

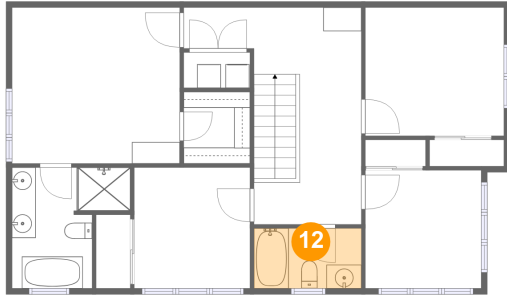
Heated: Yes  
Finished: Yes  
Enclosed: Yes  
Contiguous: Yes  
Permitted: Yes  
Wet space: No  
Addition: No  
Conversion: No



## Home report

929 Shimmerton Circle, Bridlewood, Kanata, Ontario, Canada,  
K2M 0L4

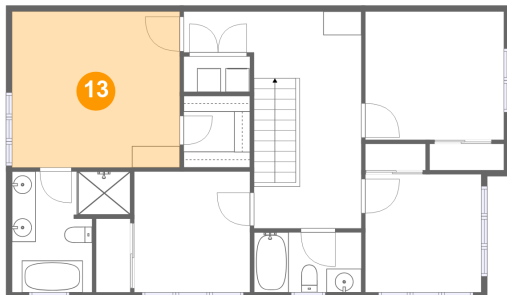
### 12 Floor 3 - Bath



Dimensions: 9'0" x 5'1"  
Area: 46 sq. ft  
Counted as living area: Yes

Heated: Yes  
Finished: Yes  
Enclosed: Yes  
Contiguous: Yes  
Permitted: Yes  
Wet space: Yes  
Addition: No  
Conversion: No

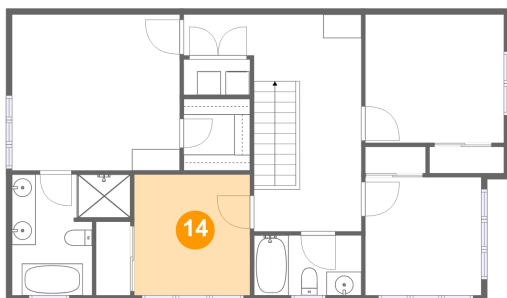
### 13 Floor 3 - Primary Bedroom



Dimensions: 14'1" x 13'1"  
Area: 185 sq. ft  
Counted as living area: Yes

Heated: Yes  
Finished: Yes  
Enclosed: Yes  
Contiguous: Yes  
Permitted: Yes  
Wet space: No  
Addition: No  
Conversion: No

### 14 Floor 3 - Bedroom



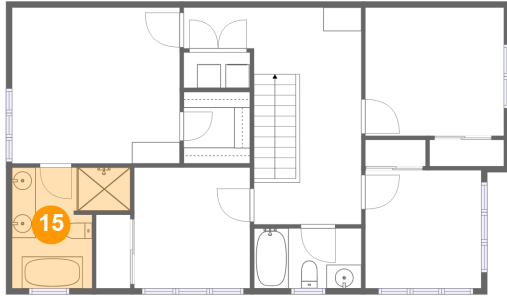
Dimensions: 9'9" x 10'2"  
Area: 99 sq. ft  
Counted as living area: Yes

Heated: Yes  
Finished: Yes  
Enclosed: Yes  
Contiguous: Yes  
Permitted: Yes  
Wet space: No  
Addition: No  
Conversion: No

## Home report

929 Shimmerton Circle, Bridlewood, Kanata, Ontario, Canada,  
K2M 0L4

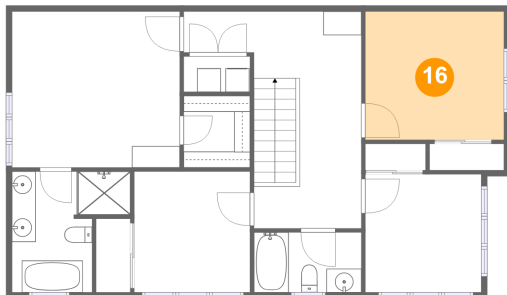
### 15 Floor 3 - Primary Bath



Dimensions: 9'11" x 10'2"  
Area: 80 sq. ft  
Counted as living area: Yes

Heated: Yes  
Finished: Yes  
Enclosed: Yes  
Contiguous: Yes  
Permitted: Yes  
Wet space: Yes  
Addition: No  
Conversion: No

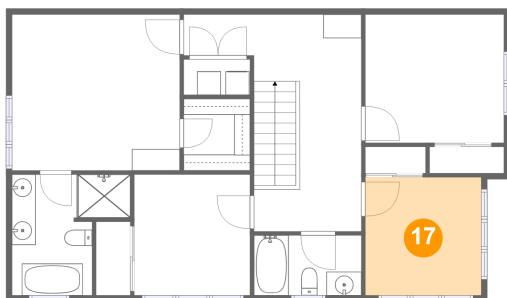
### 16 Floor 3 - Bedroom



Dimensions: 11'8" x 10'10"  
Area: 126 sq. ft  
Counted as living area: Yes

Heated: Yes  
Finished: Yes  
Enclosed: Yes  
Contiguous: Yes  
Permitted: Yes  
Wet space: No  
Addition: No  
Conversion: No

### 17 Floor 3 - Office



Dimensions: 9'9" x 9'11"  
Area: 97 sq. ft  
Counted as living area: Yes

Heated: Yes  
Finished: Yes  
Enclosed: Yes  
Contiguous: Yes  
Permitted: Yes  
Wet space: No  
Addition: No  
Conversion: No