

Home report

Firefly Lane 6001
Apollo Beach

Highlights



1 Kitchen



1 Living room



3 Bedroom



2 Bath



17 Doors



16 Windows

Nearby services Data source: Google Maps



**US Hwy 41 @ Dimare
Packing, 0.4 mi**



**Publix Super Market at
Paradise Shoppes of Apollo
Beach, 0.8 mi**



**Express Care Tampa -
Urgent Care Apollo Beach,
0.4 mi**



**Armetta's Grand Jete
Studio of Dance, 0.5 mi**

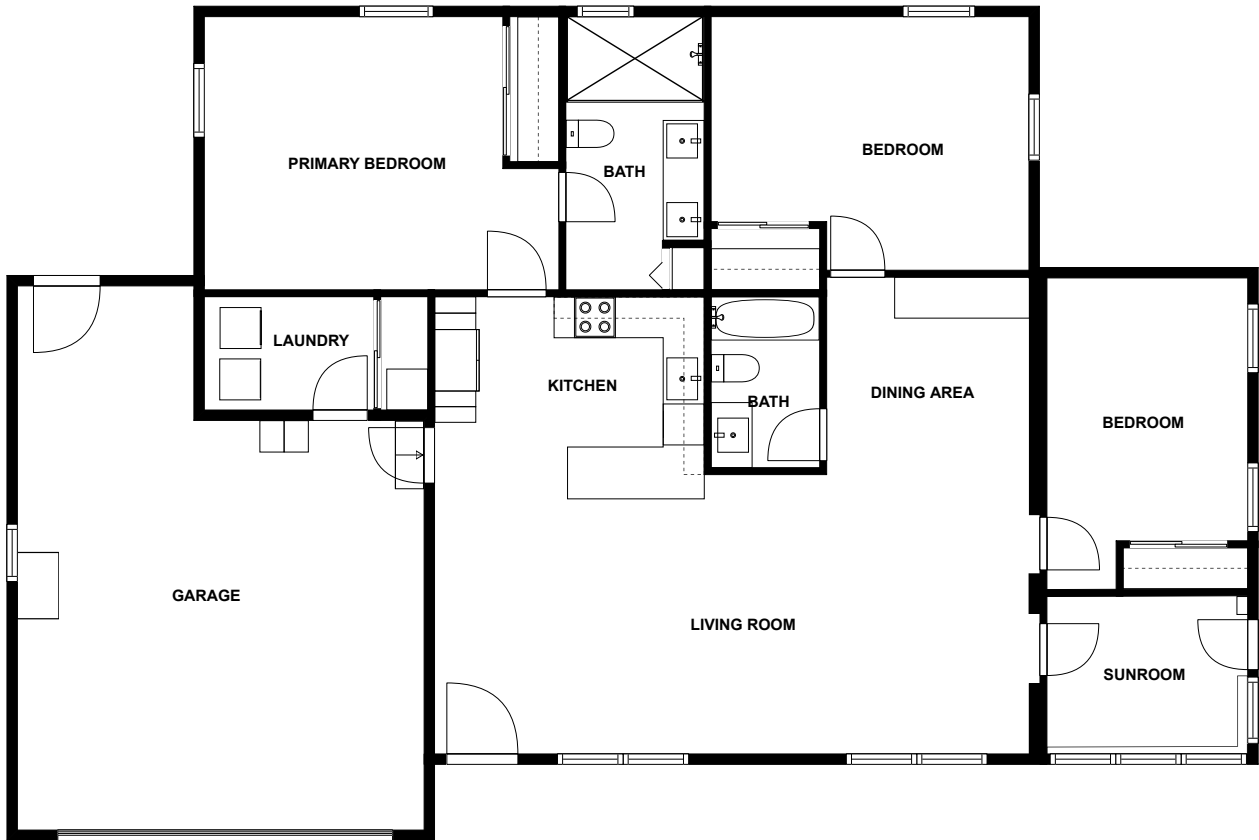


**Mi Viejo Latin Cafe' &
Catering, 0.4 mi**



**MacDill Passenger
Terminal, 7.8 mi**

Floor plan



fvm

SIZES AND DIMENSIONS ARE APPROXIMATE, ACTUAL MAY VARY.



Appendix 1: Data sheet

Garage - 1	LivingRoom - 1	Kitchen - 1
Dining - 1	Dining - Open - 1	Bedroom - 3
Bedroom - Master - 1	Bath - 2	Utility - 1
Utility - Laundry - 1	Room - 1	Room - Glass - 1