

Home report

75 West Burda Place, New City, Rockland County, New York,
United States, 10956

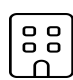


Total Area: 2073 sq. ft

Floor 1: 679 sq. ft, Floor 2: 1394 sq. ft

Excluded: Utility 92 sq. ft, Garage 452 sq. ft, Fireplace 11 sq. ft, Outdoor Deck 258 sq. ft,
Walls: 166 sq. ft

Property summary

 **2** Floors

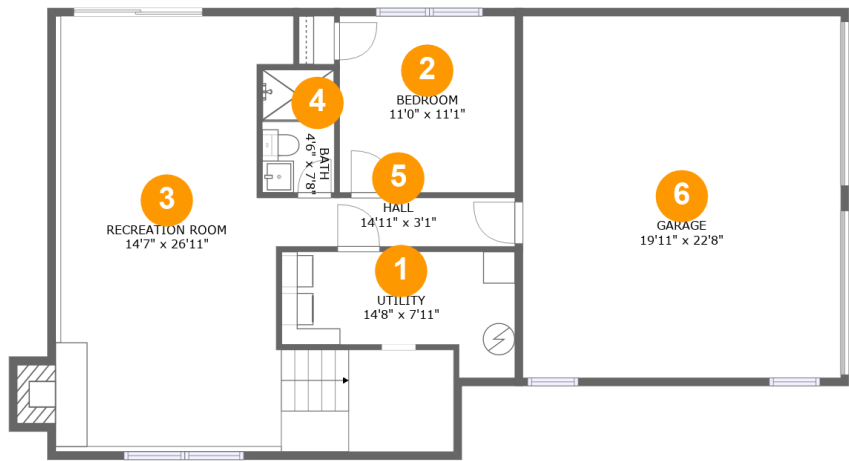
 **4** Bedrooms

 **3** Bathrooms

 **1** Garages

Home report

75 West Burda Place, New City, Rockland County, New York,
United States, 10956



Room dimensions

Floor 1 Total:679sqft Excluded: 555sqft

#		Max Dimensions	sqft	Included
1	Utility	14'8" x 7'11"	92 sq. ft	No
2	Bedroom	11'0" x 11'1"	122 sq. ft	Yes
3	Recreation Room	14'7" x 26'11"	451 sq. ft	Yes
4	Bath	4'6" x 7'8"	35 sq. ft	Yes
5	Hall	14'11" x 3'1"	46 sq. ft	Yes
6	Garage	19'11" x 22'8"	452 sq. ft	No

Home report

75 West Burda Place, New City, Rockland County, New York,
United States, 10956



Room dimensions

Floor 2 Total:1394sqft Excluded: 258sqft

#		Max Dimensions	sqft	Included
7	W.I.C.	5'6" x 6'9"	38 sq. ft	Yes
8	Hall	16'1" x 4'11"	58 sq. ft	Yes
9	Foyer	3'9" x 6'4"	24 sq. ft	Yes
10	Bath	5'6" x 6'4"	35 sq. ft	Yes
11	Dining Area	11'4" x 11'2"	126 sq. ft	Yes
12	Primary Bedroom	15'6" x 13'5"	208 sq. ft	Yes
13	Living Room	22'2" x 17'4"	362 sq. ft	Yes
14	Deck	21'11" x 10'9"	258 sq. ft	No
15	Bath	5'2" x 11'6"	55 sq. ft	Yes
16	Bedroom	10'8" x 13'4"	142 sq. ft	Yes
17	Kitchen	10'5" x 12'10"	134 sq. ft	Yes

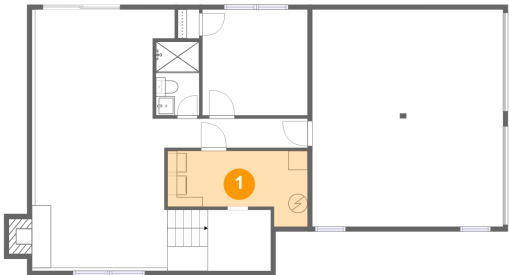
Home report

75 West Burda Place, New City, Rockland County, New York,
United States, 10956

#		Max Dimensions	sqft	Included
18	Bedroom	10'4" x 10'0"	109 sq. ft	Yes

75 West Burda Place, New City, Rockland County, New York,
United States, 10956

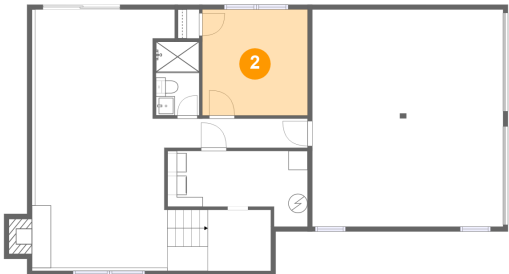
1 Floor 1 - Utility



Max Dimensions: 14'8" x 7'11"
Calculated Area: 92 sq. ft
Included: No

Heated: Yes
Finished: No
Enclosed: Yes
Contiguous: Yes
Permitted: Yes
Wet space: No
Addition: No
Conversion: No

2 Floor 1 - Bedroom

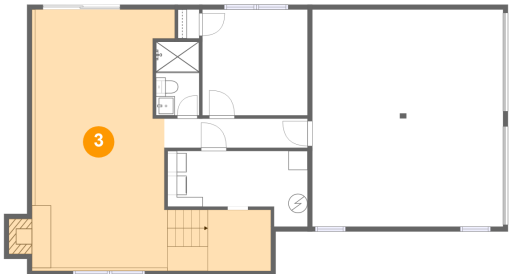


Max Dimensions: 11'0" x 11'1"
Calculated Area: 122 sq. ft
Included: Yes

Heated: Yes
Finished: Yes
Enclosed: Yes
Contiguous: Yes
Permitted: Yes
Wet space: No
Addition: No
Conversion: No

75 West Burda Place, New City, Rockland County, New York,
United States, 10956

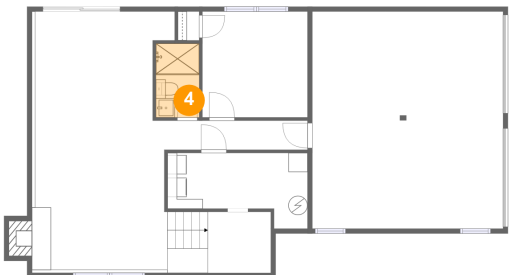
3 Floor 1 - Recreation Room



Max Dimensions: 14'7" x 26'11"
Calculated Area: 451 sq. ft
Included: Yes

Heated: Yes
Finished: Yes
Enclosed: Yes
Contiguous: Yes
Permitted: Yes
Wet space: No
Addition: No
Conversion: No

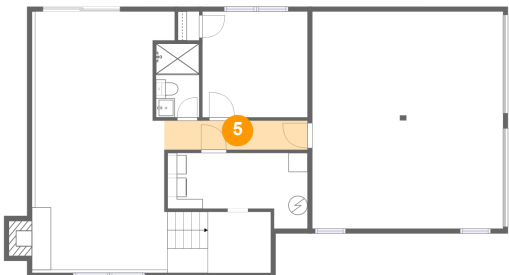
4 Floor 1 - Bath



Max Dimensions: 4'6" x 7'8"
Calculated Area: 35 sq. ft
Included: Yes

Heated: Yes
Finished: Yes
Enclosed: Yes
Contiguous: Yes
Permitted: Yes
Wet space: Yes
Addition: No
Conversion: No

5 Floor 1 - Hall

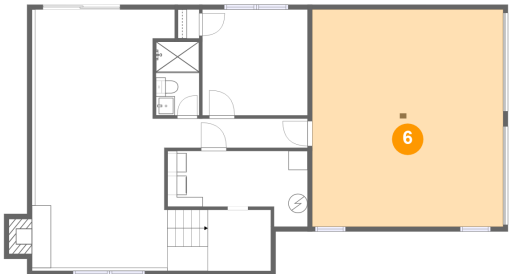


Max Dimensions: 14'11" x 3'1"
Calculated Area: 46 sq. ft
Included: Yes

Heated: Yes
Finished: Yes
Enclosed: Yes
Contiguous: Yes
Permitted: Yes
Wet space: No
Addition: No
Conversion: No

75 West Burda Place, New City, Rockland County, New York,
United States, 10956

6 Floor 1 - Garage



Max Dimensions: 19'11" x 22'8"
Calculated Area: 452 sq. ft
Included: No

Heated: No
Finished: No
Enclosed: Yes
Contiguous: Yes
Permitted: Yes
Wet space: No
Addition: No
Conversion: No

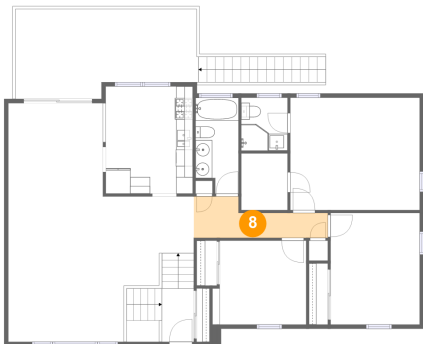
7 Floor 2 - W.I.C.



Max Dimensions: 5'6" x 6'9"
Calculated Area: 38 sq. ft
Included: Yes

Heated: Yes
Finished: Yes
Enclosed: Yes
Contiguous: Yes
Permitted: Yes
Wet space: No
Addition: No
Conversion: No

8 Floor 2 - Hall



Max Dimensions: 16'1" x 4'11"
Calculated Area: 58 sq. ft
Included: Yes

Heated: Yes
Finished: Yes
Enclosed: Yes
Contiguous: Yes
Permitted: Yes
Wet space: No
Addition: No
Conversion: No

75 West Burda Place, New City, Rockland County, New York,
United States, 10956

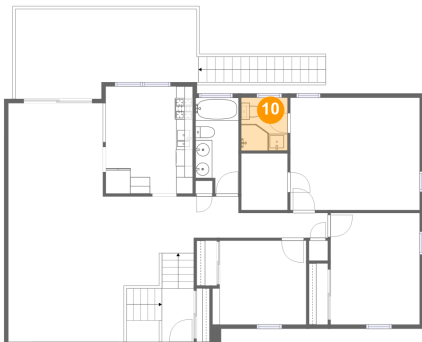
9 Floor 2 - Foyer



Max Dimensions: 3'9" x 6'4"
Calculated Area: 24 sq. ft
Included: Yes

Heated: Yes
Finished: Yes
Enclosed: Yes
Contiguous: Yes
Permitted: Yes
Wet space: No
Addition: No
Conversion: No

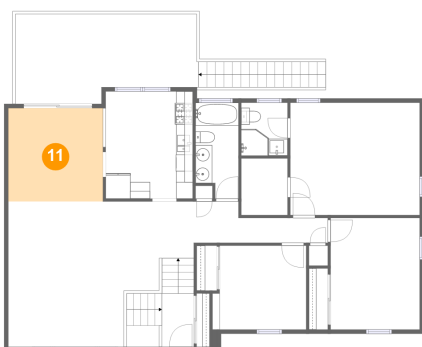
10 Floor 2 - Bath



Max Dimensions: 5'6" x 6'4"
Calculated Area: 35 sq. ft
Included: Yes

Heated: Yes
Finished: Yes
Enclosed: Yes
Contiguous: Yes
Permitted: Yes
Wet space: Yes
Addition: No
Conversion: No

11 Floor 2 - Dining Area



Max Dimensions: 11'4" x
11'2"
Calculated Area: 126 sq. ft
Included: Yes

Heated: Yes
Finished: Yes
Enclosed: Yes
Contiguous:
Yes
Permitted: Yes
Wet space: No
Addition: No
Conversion: No

75 West Burda Place, New City, Rockland County, New York,
United States, 10956

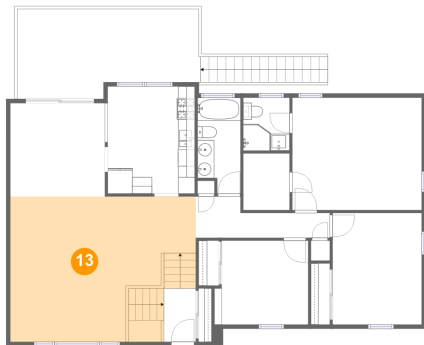
12 Floor 2 - Primary Bedroom



Max Dimensions: 15'6" x 13'5"
Calculated Area: 208 sq. ft
Included: Yes

Heated: Yes
Finished: Yes
Enclosed: Yes
Contiguous: Yes
Permitted: Yes
Wet space: No
Addition: No
Conversion: No

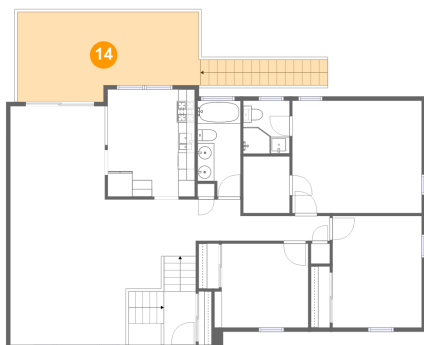
13 Floor 2 - Living Room



Max Dimensions: 22'2" x 17'4"
Calculated Area: 362 sq. ft
Included: Yes

Heated: Yes
Finished: Yes
Enclosed: Yes
Contiguous: Yes
Permitted: Yes
Wet space: No
Addition: No
Conversion: No

14 Floor 2 - Deck



Max Dimensions: 21'11" x 10'9"
Calculated Area: 258 sq. ft
Included: No

Heated: No
Finished: Yes
Enclosed: No
Contiguous: Yes
Permitted: Yes
Wet space: No
Addition: No
Conversion: No

75 West Burda Place, New City, Rockland County, New York,
United States, 10956

15 Floor 2 - Bath



Max Dimensions: 5'2" x 11'6"
Calculated Area: 55 sq. ft
Included: Yes

Heated: Yes
Finished: Yes
Enclosed: Yes
Contiguous: Yes
Permitted: Yes
Wet space: Yes
Addition: No
Conversion: No

16 Floor 2 - Bedroom



Max Dimensions: 10'8" x 13'4"
Calculated Area: 142 sq. ft
Included: Yes

Heated: Yes
Finished: Yes
Enclosed: Yes
Contiguous: Yes
Permitted: Yes
Wet space: No
Addition: No
Conversion: No

17 Floor 2 - Kitchen



Max Dimensions: 10'5" x 12'10"
Calculated Area: 134 sq. ft
Included: Yes

Heated: Yes
Finished: Yes
Enclosed: Yes
Contiguous: Yes
Permitted: Yes
Wet space: No
Addition: No
Conversion: No

75 West Burda Place, New City, Rockland County, New York,
United States, 10956

18 Floor 2 - Bedroom



Max Dimensions: 10'4" x 10'0"
Calculated Area: 109 sq. ft
Included: Yes

Heated: Yes
Finished: Yes
Enclosed: Yes
Contiguous: Yes
Permitted: Yes
Wet space: No
Addition: No
Conversion: No