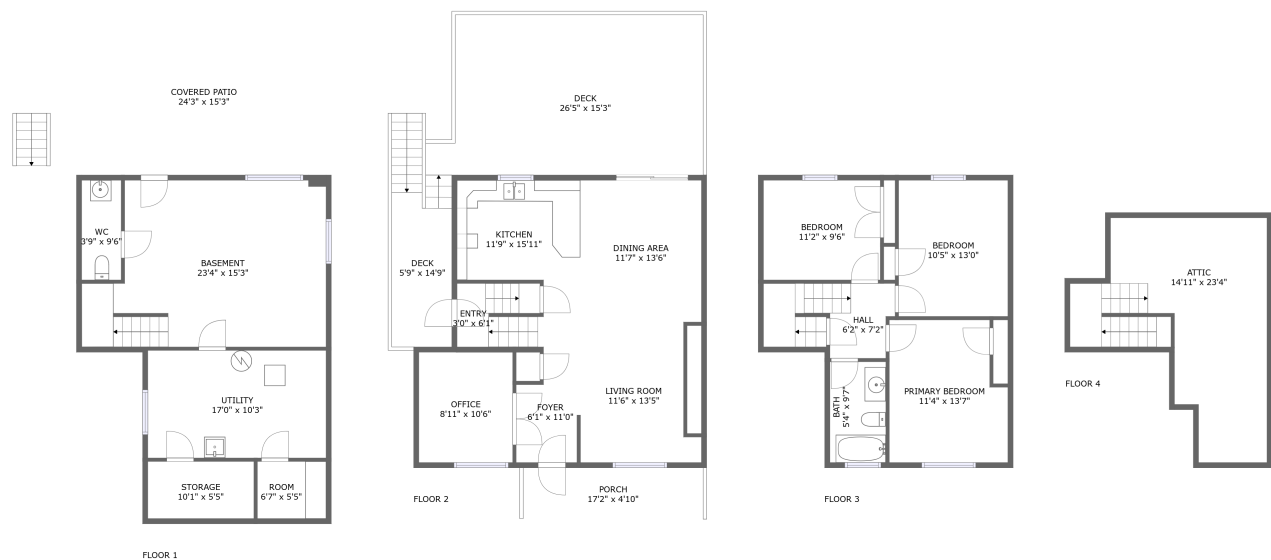




Home report


25 Scotia Street, Ingram, Pittsburgh, Allegheny County,
Pennsylvania, United States, 15205




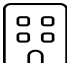
Property summary


**0** Garages


**3** Bedrooms

**1** Bathrooms

**1** Half baths

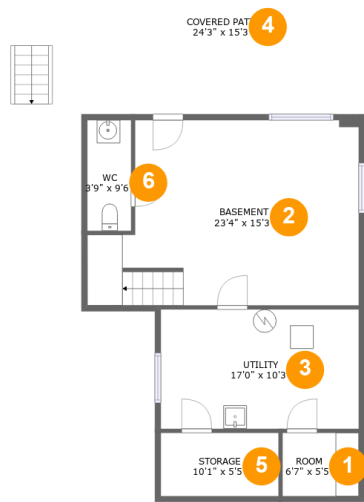
**4** Floors

**1,330** Gross living area sqft

**3,287** Total sqft

Home report

25 Scotia Street, Ingram, Pittsburgh, Allegheny County,
Pennsylvania, United States, 15205



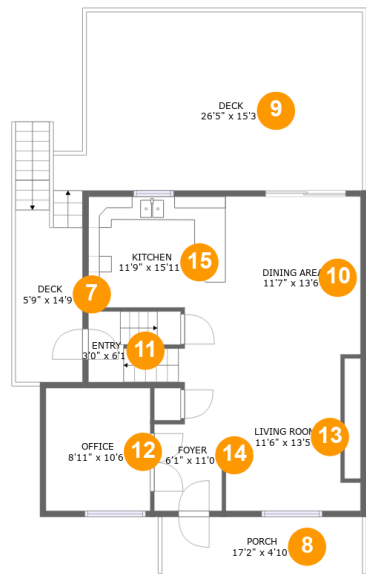
Room dimensions

Floor 1 Total sqft: 1079 Living area: 0

#		Dimensions	sqft	Counted as living area
1	Room	6'7" x 5'5"	36 sq. ft	No
2	Basement	23'4" x 15'3"	330 sq. ft	No
3	Utility	17'0" x 10'3"	175 sq. ft	No
4	Covered Patio	24'3" x 15'3"	372 sq. ft	No
5	Storage	10'1" x 5'5"	55 sq. ft	No
6	WC	3'9" x 9'6"	36 sq. ft	No

Home report

25 Scotia Street, Ingram, Pittsburgh, Allegheny County,
Pennsylvania, United States, 15205



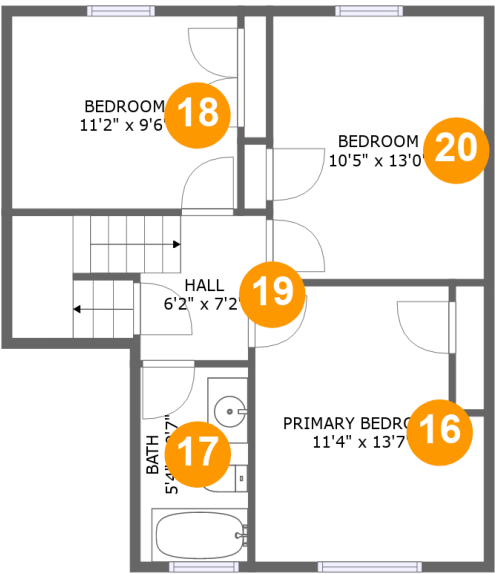
Room dimensions

Floor 2 Total sqft: 1263 Living area: 721

#		Dimensions	sqft	Counted as living area
7	Deck	5'9" x 14'9"	88 sq. ft	No
8	Porch	17'2" x 4'10"	83 sq. ft	No
9	Deck	26'5" x 15'3"	370 sq. ft	No
10	Dining Area	11'7" x 13'6"	157 sq. ft	Yes
11	Entry	3'0" x 6'1"	46 sq. ft	Yes
12	Office	8'11" x 10'6"	94 sq. ft	Yes
13	Living Room	11'6" x 13'5"	136 sq. ft	Yes
14	Foyer	6'1" x 11'0"	57 sq. ft	Yes
15	Kitchen	11'9" x 15'11"	135 sq. ft	Yes

Home report

25 Scotia Street, Ingram, Pittsburgh, Allegheny County,
Pennsylvania, United States, 15205



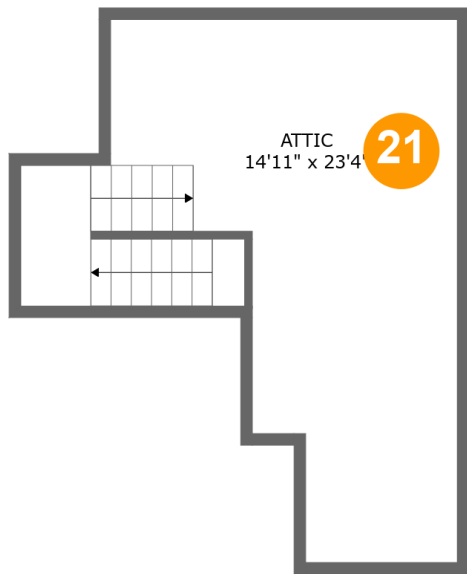
Room dimensions

Floor 3 Total sqft: 609 Living area: 609

#		Dimensions	sqft	Counted as living area
16	Primary Bedroom	11'4" x 13'7"	143 sq. ft	Yes
17	Bath	5'4" x 9'7"	51 sq. ft	Yes
18	Bedroom	11'2" x 9'6"	106 sq. ft	Yes
19	Hall	6'2" x 7'2"	77 sq. ft	Yes
20	Bedroom	10'5" x 13'0"	135 sq. ft	Yes

Home report

25 Scotia Street, Ingram, Pittsburgh, Allegheny County,
Pennsylvania, United States, 15205



Room dimensions

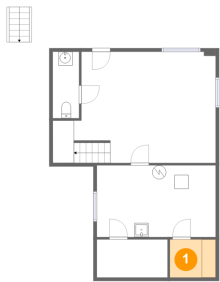
Floor 4 Total sqft: 336 Living area: 0

#		Dimensions	sqft	Counted as living area
21	Attic	14'11" x 23'4"	199 sq. ft	No

Home report

25 Scotia Street, Ingram, Pittsburgh, Allegheny County,
Pennsylvania, United States, 15205

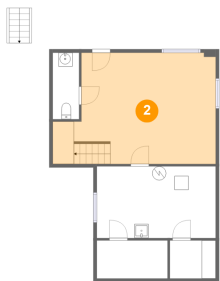
1 Floor 1 - Room



Dimensions: 6'7" x 5'5"
Area: 36 sq. ft
Counted as living area: No

Heated: Yes
Finished: No
Enclosed: Yes
Contiguous: Yes
Permitted: Yes
Wet space: No
Addition: No
Conversion: No

2 Floor 1 - Basement



Dimensions: 23'4" x 15'3"
Area: 330 sq. ft
Counted as living area: No

Heated: Yes
Finished: No
Enclosed: Yes
Contiguous: Yes
Permitted: Yes
Wet space: No
Addition: No
Conversion: No

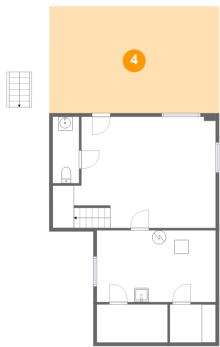
3 Floor 1 - Utility



Dimensions: 17'0" x 10'3"
Area: 175 sq. ft
Counted as living area: No

Heated: Yes
Finished: No
Enclosed: Yes
Contiguous: Yes
Permitted: Yes
Wet space: No
Addition: No
Conversion: No

4 Floor 1 - Covered Patio



Dimensions: 24'3" x 15'3"
Area: 372 sq. ft
Counted as living area: No

Heated: No
Finished: Yes
Enclosed: No
Contiguous: Yes
Permitted: Yes
Wet space: No
Addition: No
Conversion: No

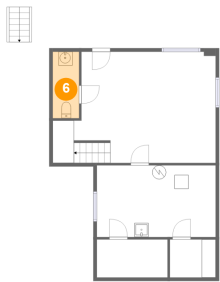
5 Floor 1 - Storage



Dimensions: 10'1" x 5'5"
Area: 55 sq. ft
Counted as living area: No

Heated: No
Finished: No
Enclosed: No
Contiguous: Yes
Permitted: Yes
Wet space: No
Addition: No
Conversion: No

6 Floor 1 - WC



Dimensions: 3'9" x 9'6"
Area: 36 sq. ft
Counted as living area: No

Heated: Yes
Finished: Yes
Enclosed: Yes
Contiguous: No
Permitted: Yes
Wet space: Yes
Addition: No
Conversion: No

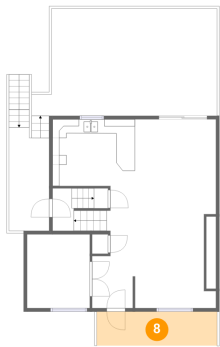
7 Floor 2 - Deck



Dimensions: 5'9" x 14'9"
Area: 88 sq. ft
Counted as living area: No

Heated: No
Finished: Yes
Enclosed: No
Contiguous: Yes
Permitted: Yes
Wet space: No
Addition: No
Conversion: No

8 Floor 2 - Porch

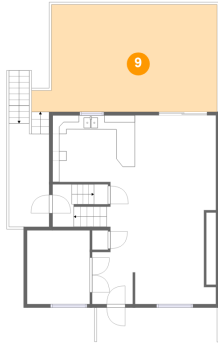


Dimensions: 17'2" x 4'10"
Area: 83 sq. ft
Counted as living area: No

Heated: No
Finished: Yes
Enclosed: No
Contiguous: Yes
Permitted: Yes
Wet space: No
Addition: No
Conversion: No

25 Scotia Street, Ingram, Pittsburgh, Allegheny County,
Pennsylvania, United States, 15205

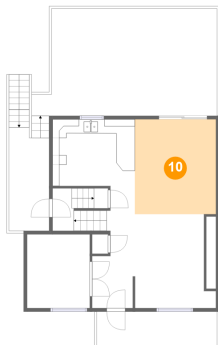
9 Floor 2 - Deck



Dimensions: 26'5" x 15'3"
Area: 370 sq. ft
Counted as living area: No

Heated: No
Finished: Yes
Enclosed: No
Contiguous: Yes
Permitted: Yes
Wet space: No
Addition: No
Conversion: No

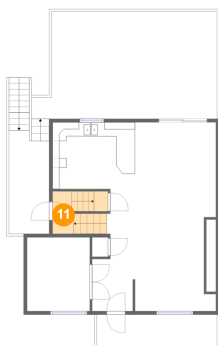
10 Floor 2 - Dining Area



Dimensions: 11'7" x 13'6"
Area: 157 sq. ft
Counted as living area: Yes

Heated: Yes
Finished: Yes
Enclosed: Yes
Contiguous: Yes
Permitted: Yes
Wet space: No
Addition: No
Conversion: No

11 Floor 2 - Entry

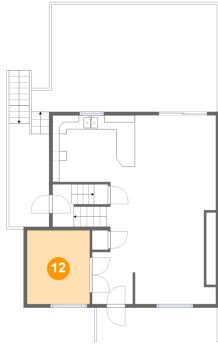


Dimensions: 3'0" x 6'1"
Area: 46 sq. ft
Counted as living area: Yes

Heated: Yes
Finished: Yes
Enclosed: Yes
Contiguous: Yes
Permitted: Yes
Wet space: No
Addition: No
Conversion: No

25 Scotia Street, Ingram, Pittsburgh, Allegheny County,
Pennsylvania, United States, 15205

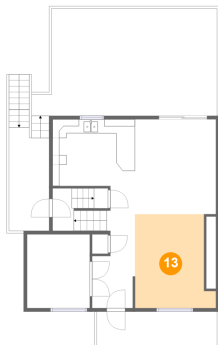
12 Floor 2 - Office



Dimensions: 8'11" x 10'6"
Area: 94 sq. ft
Counted as living area: Yes

Heated: Yes
Finished: Yes
Enclosed: Yes
Contiguous: Yes
Permitted: Yes
Wet space: No
Addition: No
Conversion: No

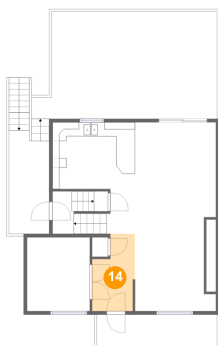
13 Floor 2 - Living Room



Dimensions: 11'6" x 13'5"
Area: 136 sq. ft
Counted as living area: Yes

Heated: Yes
Finished: Yes
Enclosed: Yes
Contiguous: Yes
Permitted: Yes
Wet space: No
Addition: No
Conversion: No

14 Floor 2 - Foyer



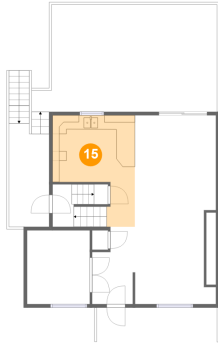
Dimensions: 6'1" x 11'0"
Area: 57 sq. ft
Counted as living area: Yes

Heated: Yes
Finished: Yes
Enclosed: Yes
Contiguous: Yes
Permitted: Yes
Wet space: No
Addition: No
Conversion: No

Home report

25 Scotia Street, Ingram, Pittsburgh, Allegheny County,
Pennsylvania, United States, 15205

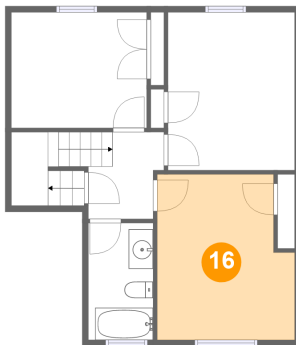
15 Floor 2 - Kitchen



Dimensions: 11'9" x 15'11"
Area: 135 sq. ft
Counted as living area: Yes

Heated: Yes
Finished: Yes
Enclosed: Yes
Contiguous: Yes
Permitted: Yes
Wet space: No
Addition: No
Conversion: No

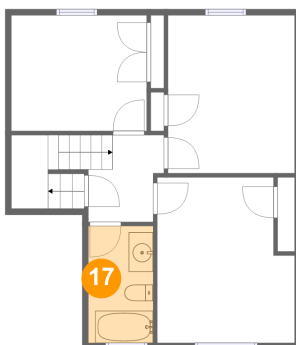
16 Floor 3 - Primary Bedroom



Dimensions: 11'4" x 13'7"
Area: 143 sq. ft
Counted as living area: Yes

Heated: Yes
Finished: Yes
Enclosed: Yes
Contiguous: Yes
Permitted: Yes
Wet space: No
Addition: No
Conversion: No

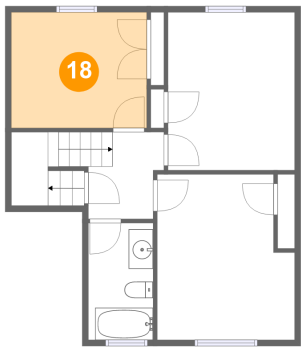
17 Floor 3 - Bath



Dimensions: 5'4" x 9'7"
Area: 51 sq. ft
Counted as living area: Yes

Heated: Yes
Finished: Yes
Enclosed: Yes
Contiguous: Yes
Permitted: Yes
Wet space: Yes
Addition: No
Conversion: No

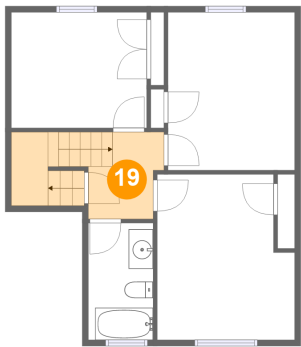
18 Floor 3 - Bedroom



Dimensions: 11'2" x 9'6"
Area: 106 sq. ft
Counted as living area: Yes

Heated: Yes
Finished: Yes
Enclosed: Yes
Contiguous: Yes
Permitted: Yes
Wet space: No
Addition: No
Conversion: No

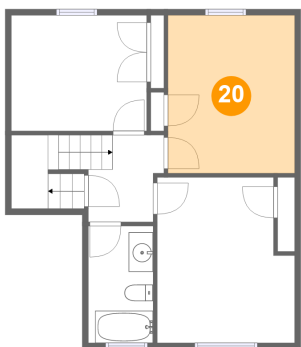
19 Floor 3 - Hall



Dimensions: 6'2" x 7'2"
Area: 77 sq. ft
Counted as living area: Yes

Heated: Yes
Finished: Yes
Enclosed: Yes
Contiguous: Yes
Permitted: Yes
Wet space: No
Addition: No
Conversion: No

20 Floor 3 - Bedroom



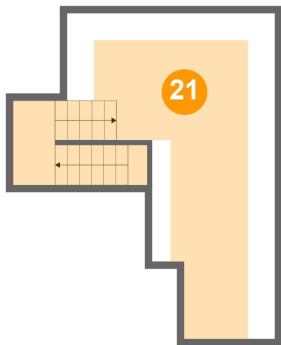
Dimensions: 10'5" x 13'0"
Area: 135 sq. ft
Counted as living area: Yes

Heated: Yes
Finished: Yes
Enclosed: Yes
Contiguous: Yes
Permitted: Yes
Wet space: No
Addition: No
Conversion: No

Home report

25 Scotia Street, Ingram, Pittsburgh, Allegheny County,
Pennsylvania, United States, 15205

21 Floor 4 - Attic



Dimensions: 14'11" x 23'4"
Area: 199 sq. ft
Counted as living area: No

Heated: No
Finished: Yes
Enclosed: Yes
Contiguous: Yes
Permitted: Yes
Wet space: No
Addition: No
Conversion: No