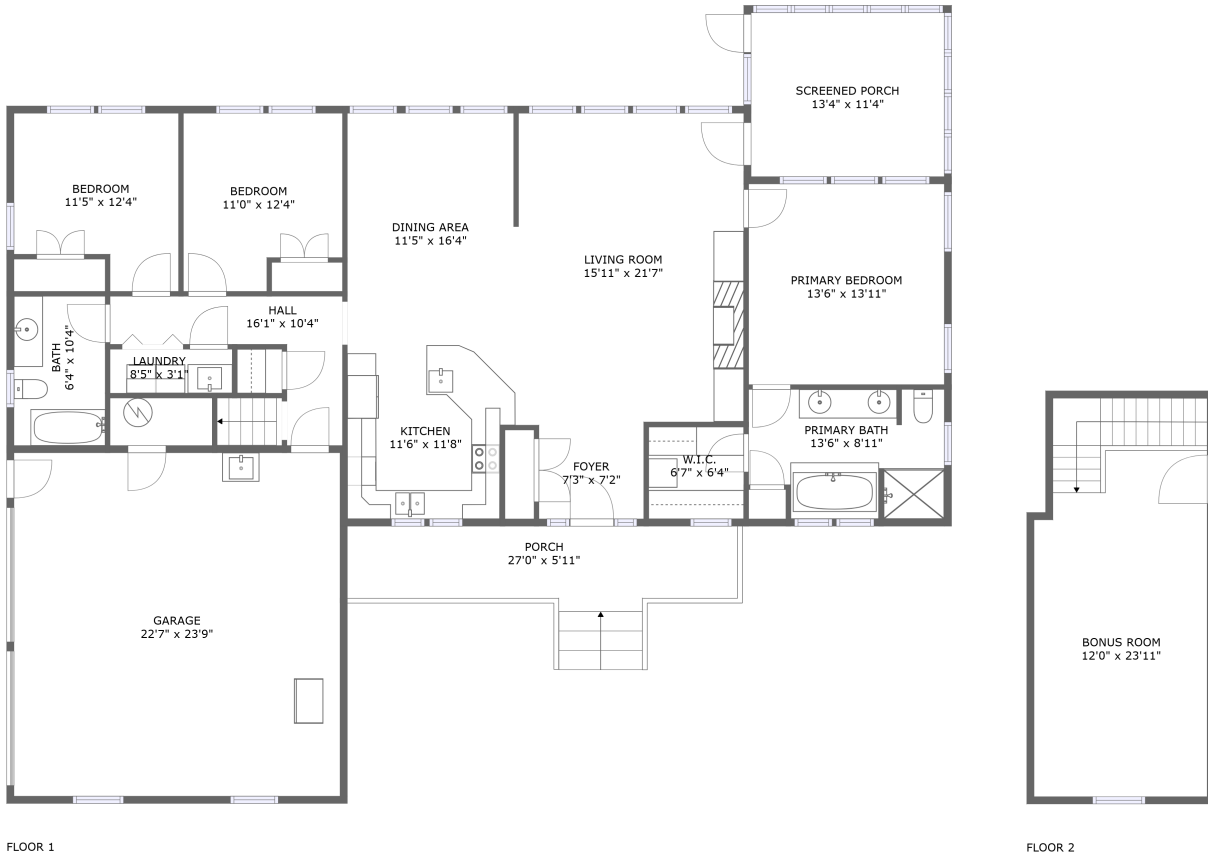


4647 Mountain Pass Road, Troutville, Virginia, United States



Property Summary


 **1** garages

 **3** bedrooms

 **2** bathrooms

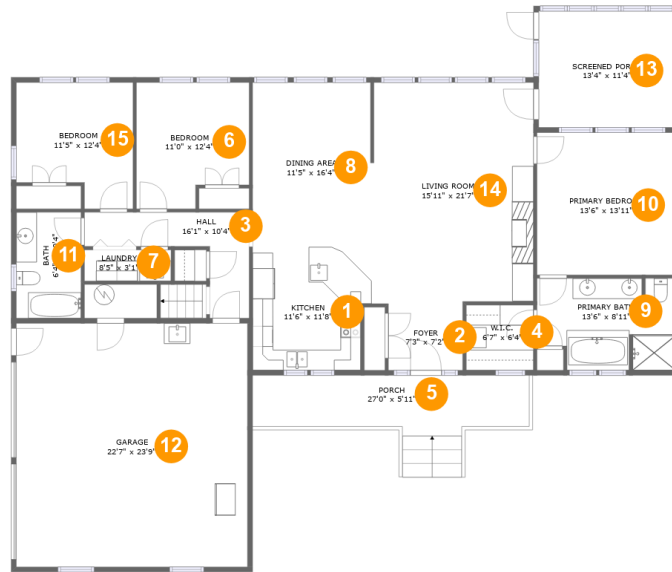
 **0** half baths

 **2** floors

 **2,044** Gross Living Area sqft

 **2,970** total sqft

4647 Mountain Pass Road, Troutville, Virginia, United States



Room Dimensions

Floor 1

Total sqft: 2611

Living area: 1685

#	Room name	Dimensions	Area (sqft)	Counted as Living Area
1	Kitchen	11'6" x 11'8"	129 sq. ft	Yes
2	Foyer	7'3" x 7'2"	50 sq. ft	Yes
3	Hall	16'1" x 10'4"	80 sq. ft	Yes
4	W.i.c.	6'7" x 6'4"	42 sq. ft	Yes
5	Porch	27'0" x 5'11"	164 sq. ft	No
6	Bedroom	11'0" x 12'4"	123 sq. ft	Yes
7	Laundry	8'5" x 3'1"	26 sq. ft	Yes
8	Dining Area	11'5" x 16'4"	188 sq. ft	Yes
9	Primary Bath	13'6" x 8'11"	112 sq. ft	Yes
10	Primary Bedroom	13'6" x 13'11"	188 sq. ft	Yes
11	Bath	6'4" x 10'4"	65 sq. ft	Yes

Scan captured on Wed, 19 Jun 2024 21:49:21 GMT

Information is calculated by CubiCasa technology; deemed highly reliable but not guaranteed.

4647 Mountain Pass Road, Troutville, Virginia, United States

#	Room name	Dimensions	Area (sqft)	Counted as Living Area
12	Garage	22'7" x 23'9"	535 sq. ft	No
13	Screened Porch	13'4" x 11'4"	151 sq. ft	No
14	Living Room	15'11" x 21'7"	337 sq. ft	Yes
15	Bedroom	11'5" x 12'4"	123 sq. ft	Yes

4647 Mountain Pass Road, Troutville, Virginia, United States



Room Dimensions

Floor 2

Total sqft: 359

Living area: 359

#	Room name	Dimensions	Area (sqft)	Counted as Living Area
16	Bonus Room	12'0" x 23'11"	319 sq. ft	Yes

4647 Mountain Pass Road, Troutville, Virginia, United States

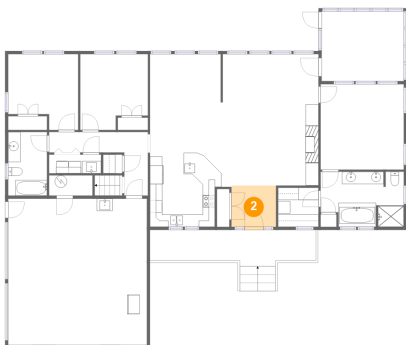
1 Floor 1 - Kitchen



Dimensions: 11'6" x 11'8"
Area: 129 sq. ft
Counted as Living Area:
Yes

Heated: Yes
Finished: Yes
Enclosed: Yes
Contiguous:
Yes
Permitted: Yes
Wet Space: No
Addition: No
Conversion: No

2 Floor 1 - Foyer



Dimensions: 7'3" x 7'2"
Area: 50 sq. ft
Counted as Living Area:
Yes

Heated: Yes
Finished: Yes
Enclosed: Yes
Contiguous:
Yes
Permitted: Yes
Wet Space: No
Addition: No
Conversion: No

4647 Mountain Pass Road, Troutville, Virginia, United States

3 Floor 1 - Hall



Dimensions: 16'1" x 10'4"
Area: 80 sq. ft
Counted as Living Area:
Yes

Heated: Yes
Finished: Yes
Enclosed: Yes
Contiguous:
Yes
Permitted: Yes
Wet Space: No
Addition: No
Conversion: No

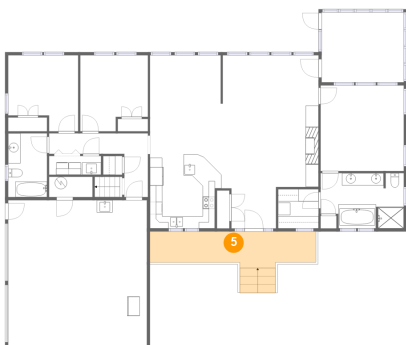
4 Floor 1 - W.i.c.



Dimensions: 6'7" x 6'4"
Area: 42 sq. ft
Counted as Living Area:
Yes

Heated: Yes
Finished: Yes
Enclosed: Yes
Contiguous:
Yes
Permitted: Yes
Wet Space: No
Addition: No
Conversion: No

5 Floor 1 - Porch

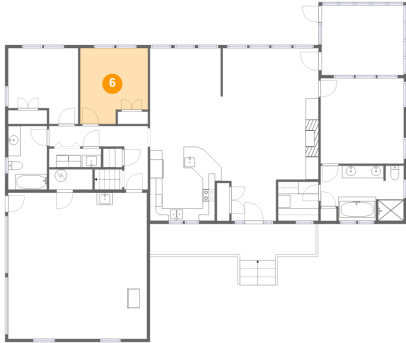


Dimensions: 27'0" x 5'11"
Area: 164 sq. ft
Counted as Living Area: No

Heated: No
Finished: Yes
Enclosed: No
Contiguous: Yes
Permitted: Yes
Wet Space: No
Addition: No
Conversion: No

4647 Mountain Pass Road, Troutville, Virginia, United States

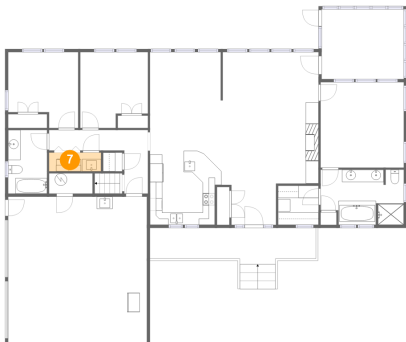
6 Floor 1 - Bedroom



Dimensions: 11'0" x 12'4"
Area: 123 sq. ft
Counted as Living Area:
Yes

Heated: Yes
Finished: Yes
Enclosed: Yes
Contiguous:
Yes
Permitted: Yes
Wet Space: No
Addition: No
Conversion: No

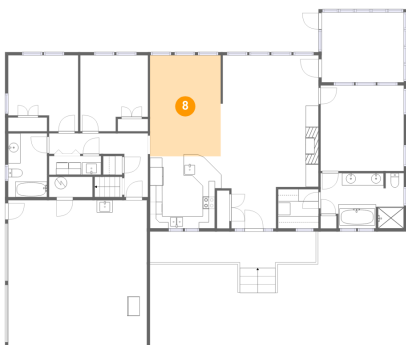
7 Floor 1 - Laundry



Dimensions: 8'5" x 3'1"
Area: 26 sq. ft
Counted as Living Area:
Yes

Heated: Yes
Finished: Yes
Enclosed: Yes
Contiguous:
Yes
Permitted: Yes
Wet Space: No
Addition: No
Conversion: No

8 Floor 1 - Dining Area

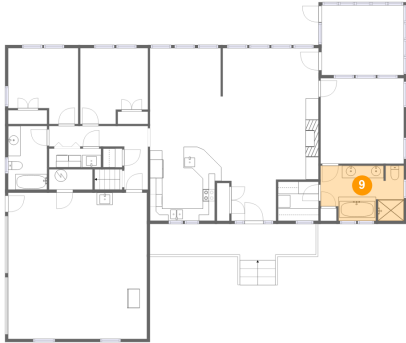


Dimensions: 11'5" x 16'4"
Area: 188 sq. ft
Counted as Living Area:
Yes

Heated: Yes
Finished: Yes
Enclosed: Yes
Contiguous:
Yes
Permitted: Yes
Wet Space: No
Addition: No
Conversion: No

4647 Mountain Pass Road, Troutville, Virginia, United States

9 Floor 1 - Primary Bath



Dimensions: 13'6" x 8'11"
Area: 112 sq. ft
Counted as Living Area:
Yes

Heated: Yes
Finished: Yes
Enclosed: Yes
Contiguous:
Yes
Permitted: Yes
Wet Space: Yes
Addition: No
Conversion: No

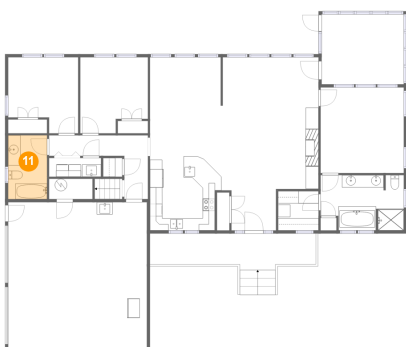
10 Floor 1 - Primary Bedroom



Dimensions: 13'6" x 13'11"
Area: 188 sq. ft
Counted as Living Area:
Yes

Heated: Yes
Finished: Yes
Enclosed: Yes
Contiguous:
Yes
Permitted: Yes
Wet Space: No
Addition: No
Conversion: No

11 Floor 1 - Bath

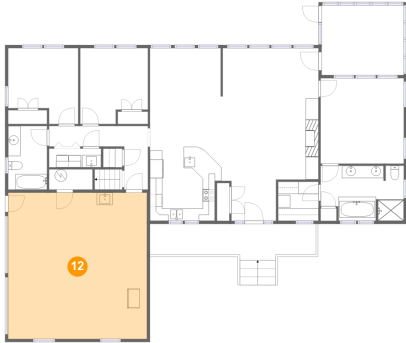


Dimensions: 6'4" x 10'4"
Area: 65 sq. ft
Counted as Living Area:
Yes

Heated: Yes
Finished: Yes
Enclosed: Yes
Contiguous:
Yes
Permitted: Yes
Wet Space: Yes
Addition: No
Conversion: No

4647 Mountain Pass Road, Troutville, Virginia, United States

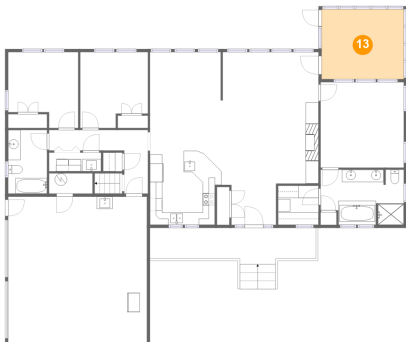
12 Floor 1 - Garage



Dimensions: 22'7" x 23'9"
Area: 535 sq. ft
Counted as Living Area: No

Heated: No
Finished: No
Enclosed: Yes
Contiguous: Yes
Permitted: Yes
Wet Space: No
Addition: No
Conversion: No

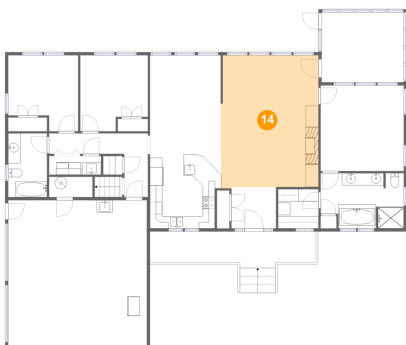
13 Floor 1 - Screened Porch



Dimensions: 13'4" x 11'4"
Area: 151 sq. ft
Counted as Living Area: No

Heated: No
Finished: Yes
Enclosed: No
Contiguous: Yes
Permitted: Yes
Wet Space: No
Addition: No
Conversion: No

14 Floor 1 - Living Room



Dimensions: 15'11" x 21'7"
Area: 337 sq. ft
Counted as Living Area: Yes

Heated: Yes
Finished: Yes
Enclosed: Yes
Contiguous: Yes
Permitted: Yes
Wet Space: No
Addition: No
Conversion: No

4647 Mountain Pass Road, Troutville, Virginia, United States

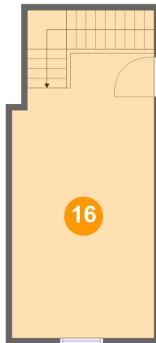
15 Floor 1 - Bedroom



Dimensions: 11'5" x 12'4"
Area: 123 sq. ft
Counted as Living Area:
Yes

Heated: Yes
Finished: Yes
Enclosed: Yes
Contiguous:
Yes
Permitted: Yes
Wet Space: No
Addition: No
Conversion: No

16 Floor 2 - Bonus Room



Dimensions: 12'0" x 23'11"
Area: 319 sq. ft
Counted as Living Area:
Yes

Heated: Yes
Finished: Yes
Enclosed: Yes
Contiguous:
Yes
Permitted: Yes
Wet Space: No
Addition: No
Conversion: No