


# 3300 Greencastle Chase NE, Marietta, GA, US



## Property summary


 **1** Garages

 **5** Bedrooms

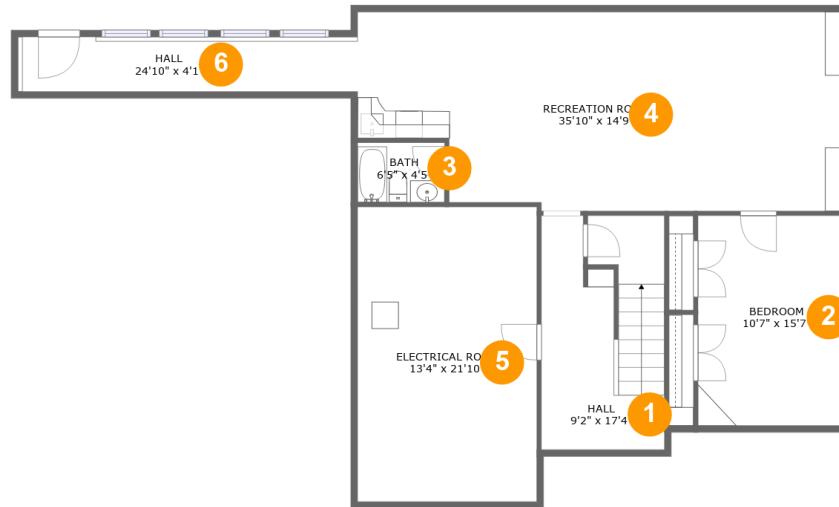
 **4** Bathrooms

 **1** Half baths

 **3** Floors

 **4,615** Gross living area sqft

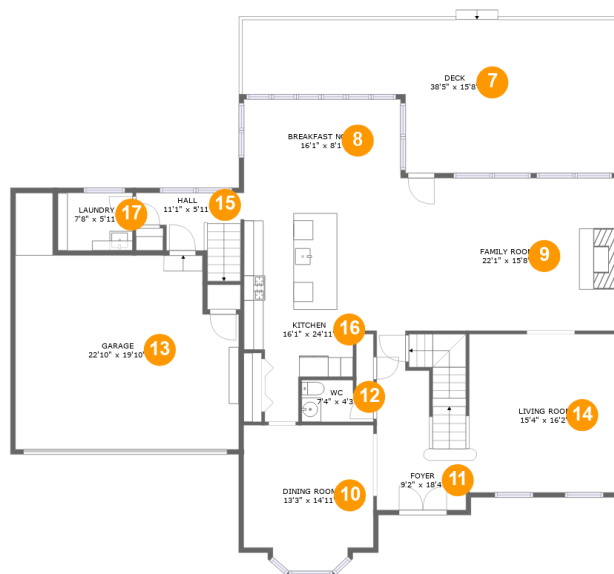
 **5,982** Total sqft

**3300 Greencastle Chase NE, Marietta, GA, US****Room dimensions**

Floor 1

Total sqft: 1391 Living area: 1081

#		Dimensions	sqft	Counted as living area
1	Hall	9'2" x 17'4"	129 sq. ft	Yes
2	Bedroom	10'7" x 15'7"	165 sq. ft	Yes
3	Bath	6'5" x 4'5"	29 sq. ft	Yes
4	Recreation Room	35'10" x 14'9"	488 sq. ft	Yes
5	Electrical Room	13'4" x 21'10"	291 sq. ft	No
6	Hall	24'10" x 4'1"	102 sq. ft	Yes

**3300 Greencastle Chase NE, Marietta, GA, US****Room dimensions**

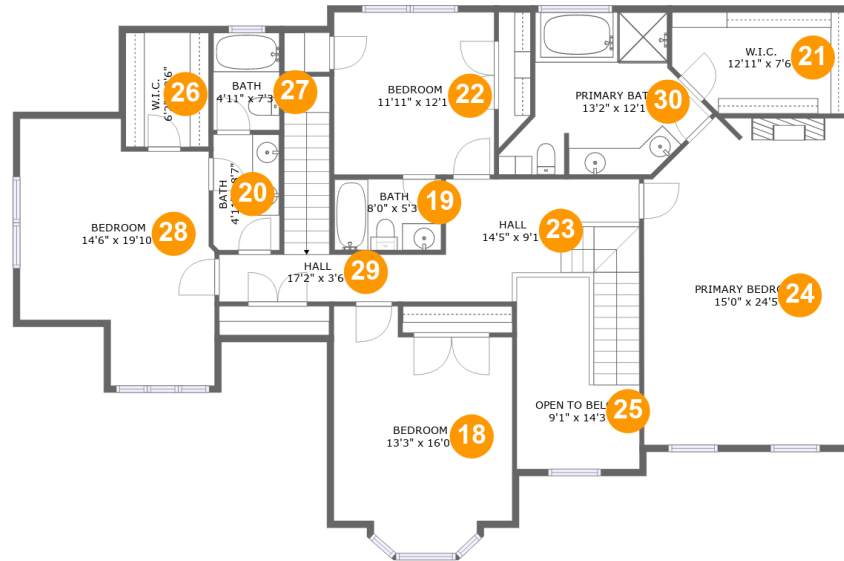
Floor 2

Total sqft: 2654 Living area: 1703

#		Dimensions	sqft	Counted as living area
7	Deck	38'5" x 15'8"	468 sq. ft	No
8	Breakfast Nook	16'1" x 8'1"	129 sq. ft	Yes
9	Family Room	22'1" x 15'8"	345 sq. ft	Yes
10	Dining Room	13'3" x 14'11"	183 sq. ft	Yes
11	Foyer	9'2" x 18'4"	160 sq. ft	Yes
12	WC	7'4" x 4'3"	29 sq. ft	Yes
13	Garage	22'10" x 19'10"	456 sq. ft	No
14	Living Room	15'4" x 16'2"	246 sq. ft	Yes
15	Hall	11'1" x 5'11"	67 sq. ft	Yes
16	Kitchen	16'1" x 24'11"	313 sq. ft	Yes
17	Laundry	7'8" x 5'11"	45 sq. ft	Yes

Scan captured on Tue, 25 Mar 2025 14:54:14 GMT

Information is calculated by Cubicasa technology deemed highly reliable but not guaranteed.

**3300 Greencastle Chase NE, Marietta, GA, US****Room dimensions**

Floor 3

Total sqft: 1937 Living area: 1831

#		Dimensions	sqft	Counted as living area
18	Bedroom	13'3" x 16'0"	209 sq. ft	Yes
19	Bath	8'0" x 5'3"	42 sq. ft	Yes
20	Bath	4'11" x 8'7"	42 sq. ft	Yes
21	W.I.C.	12'11" x 7'6"	91 sq. ft	Yes
22	Bedroom	11'11" x 12'1"	144 sq. ft	Yes
23	Hall	14'5" x 9'1"	145 sq. ft	Yes
24	Primary Bedroom	15'0" x 24'5"	352 sq. ft	Yes
25	Open To Below	9'1" x 14'3"	100 sq. ft	No
26	W.I.C.	6'2" x 8'6"	53 sq. ft	Yes
27	Bath	4'11" x 7'3"	36 sq. ft	Yes
28	Bedroom	14'6" x 19'10"	235 sq. ft	Yes

Scan captured on Tue, 25 Mar 2025 14:54:14 GMT

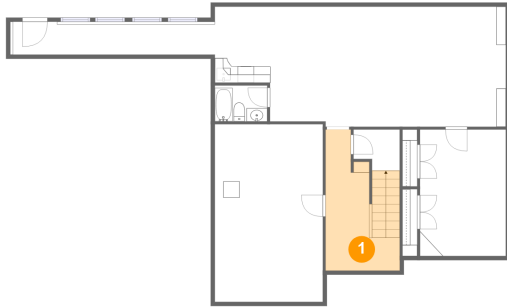
Information is calculated by Cubicasa technology deemed highly reliable but not guaranteed.

**3300 Greencastle Chase NE, Marietta, GA, US**

#		Dimensions	sqft	Counted as living area
29	Hall	17'2" x 3'6"	105 sq. ft	Yes
30	Primary Bath	13'2" x 12'1"	136 sq. ft	Yes

# 3300 Greencastle Chase NE, Marietta, GA, US

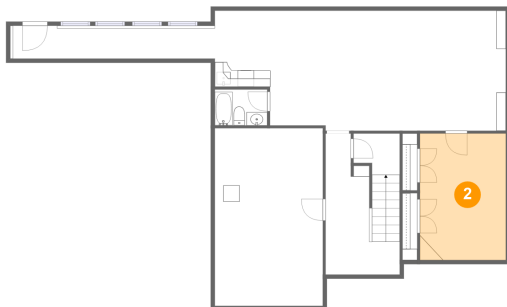
## 1 Floor 1 - Hall



Dimensions: 9'2" x 17'4"  
Area: 129 sq. ft  
Counted as living area: Yes

Heated: Yes  
Finished: Yes  
Enclosed: Yes  
Contiguous: Yes  
Permitted: Yes  
Wet space: No  
Addition: No  
Conversion: No

## 2 Floor 1 - Bedroom

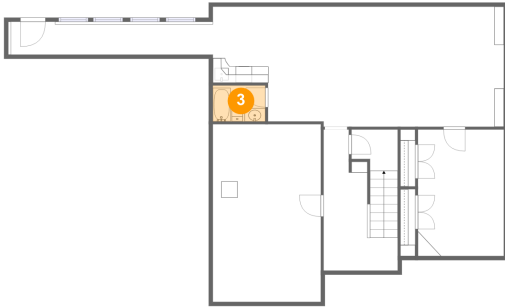


Dimensions: 10'7" x 15'7"  
Area: 165 sq. ft  
Counted as living area: Yes

Heated: Yes  
Finished: Yes  
Enclosed: Yes  
Contiguous: Yes  
Permitted: Yes  
Wet space: No  
Addition: No  
Conversion: No

# 3300 Greencastle Chase NE, Marietta, GA, US

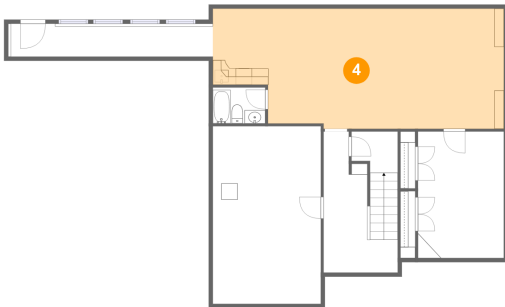
## 3 Floor 1 - Bath



Dimensions: 6'5" x 4'5"  
Area: 29 sq. ft  
Counted as living area: Yes

Heated: Yes  
Finished: Yes  
Enclosed: Yes  
Contiguous: Yes  
Permitted: Yes  
Wet space: Yes  
Addition: No  
Conversion: No

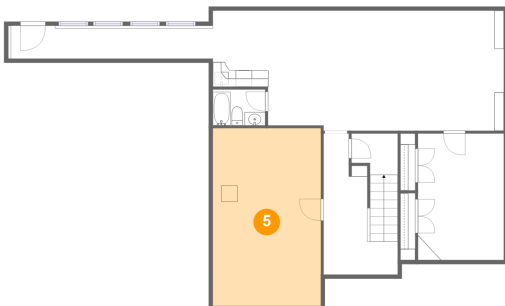
## 4 Floor 1 - Recreation Room



Dimensions: 35'10" x 14'9"  
Area: 488 sq. ft  
Counted as living area: Yes

Heated: Yes  
Finished: Yes  
Enclosed: Yes  
Contiguous: Yes  
Permitted: Yes  
Wet space: No  
Addition: No  
Conversion: No

## 5 Floor 1 - Electrical Room

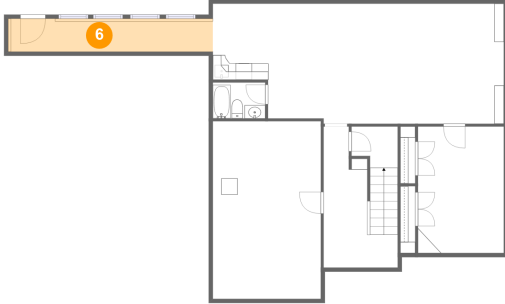


Dimensions: 13'4" x 21'10"  
Area: 291 sq. ft  
Counted as living area: No

Heated: No  
Finished: No  
Enclosed: Yes  
Contiguous: Yes  
Permitted: Yes  
Wet space: No  
Addition: No  
Conversion: No

# 3300 Greencastle Chase NE, Marietta, GA, US

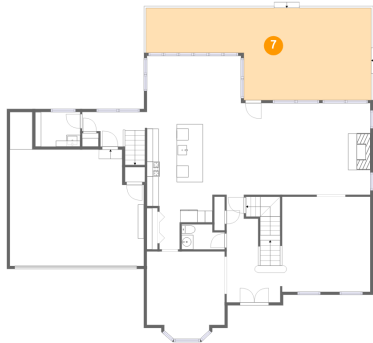
## 6 Floor 1 - Hall



Dimensions: 24'10" x 4'1"  
Area: 102 sq. ft  
Counted as living area: Yes

Heated: Yes  
Finished: Yes  
Enclosed: Yes  
Contiguous: Yes  
Permitted: Yes  
Wet space: No  
Addition: No  
Conversion: No

## 7 Floor 2 - Deck



Dimensions: 38'5" x 15'8"  
Area: 468 sq. ft  
Counted as living area: No

Heated: No  
Finished: Yes  
Enclosed: No  
Contiguous: Yes  
Permitted: Yes  
Wet space: No  
Addition: No  
Conversion: No

## 8 Floor 2 - Breakfast Nook



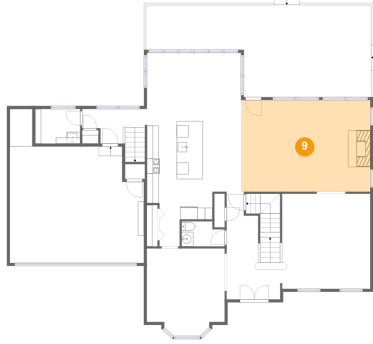
Dimensions: 16'1" x 8'1"  
Area: 129 sq. ft  
Counted as living area: Yes

Heated: Yes  
Finished: Yes  
Enclosed: Yes  
Contiguous: Yes  
Permitted: Yes  
Wet space: No  
Addition: No  
Conversion: No



# 3300 Greencastle Chase NE, Marietta, GA, US

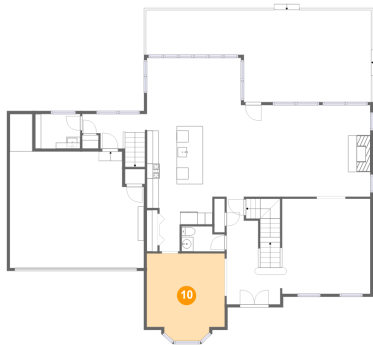
## 9 Floor 2 - Family Room



Dimensions: 22'1" x 15'8"  
Area: 345 sq. ft  
Counted as living area: Yes

Heated: Yes  
Finished: Yes  
Enclosed: Yes  
Contiguous: Yes  
Permitted: Yes  
Wet space: No  
Addition: No  
Conversion: No

## 10 Floor 2 - Dining Room



Dimensions: 13'3" x 14'11"  
Area: 183 sq. ft  
Counted as living area: Yes

Heated: Yes  
Finished: Yes  
Enclosed: Yes  
Contiguous: Yes  
Permitted: Yes  
Wet space: No  
Addition: No  
Conversion: No

## 11 Floor 2 - Foyer

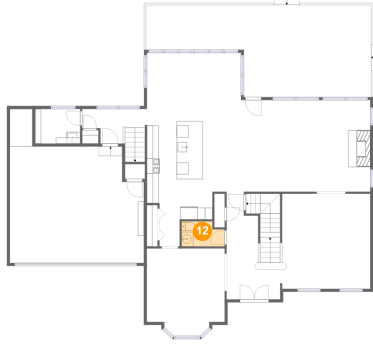


Dimensions: 9'2" x 18'4"  
Area: 160 sq. ft  
Counted as living area: Yes

Heated: Yes  
Finished: Yes  
Enclosed: Yes  
Contiguous: Yes  
Permitted: Yes  
Wet space: No  
Addition: No  
Conversion: No

# 3300 Greencastle Chase NE, Marietta, GA, US

## 12 Floor 2 - WC



Dimensions: 7'4" x 4'3"  
Area: 29 sq. ft  
Counted as living area: Yes

Heated: Yes  
Finished: Yes  
Enclosed: Yes  
Contiguous: Yes  
Permitted: Yes  
Wet space: No  
Addition: No  
Conversion: No

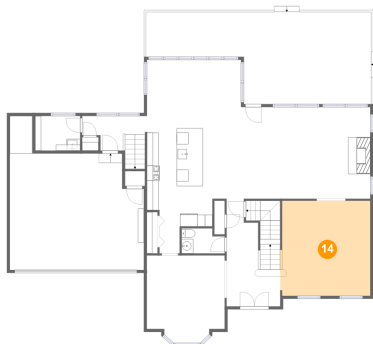
## 13 Floor 2 - Garage



Dimensions: 22'10" x 19'10"  
Area: 456 sq. ft  
Counted as living area: No

Heated: No  
Finished: No  
Enclosed: Yes  
Contiguous: Yes  
Permitted: Yes  
Wet space: No  
Addition: No  
Conversion: No

## 14 Floor 2 - Living Room



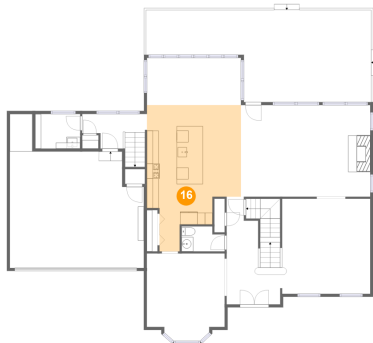
Dimensions: 15'4" x 16'2"  
Area: 246 sq. ft  
Counted as living area: Yes

Heated: Yes  
Finished: Yes  
Enclosed: Yes  
Contiguous: Yes  
Permitted: Yes  
Wet space: No  
Addition: No  
Conversion: No

**3300 Greencastle Chase NE, Marietta, GA, US****15 Floor 2 - Hall**

**Dimensions:** 11'1" x 5'11"  
**Area:** 67 sq. ft  
**Counted as living area:** Yes

**Heated:** Yes  
**Finished:** Yes  
**Enclosed:** Yes  
**Contiguous:** Yes  
**Permitted:** Yes  
**Wet space:** No  
**Addition:** No  
**Conversion:** No

**16 Floor 2 - Kitchen**

**Dimensions:** 16'1" x 24'11"  
**Area:** 313 sq. ft  
**Counted as living area:** Yes

**Heated:** Yes  
**Finished:** Yes  
**Enclosed:** Yes  
**Contiguous:** Yes  
**Permitted:** Yes  
**Wet space:** No  
**Addition:** No  
**Conversion:** No

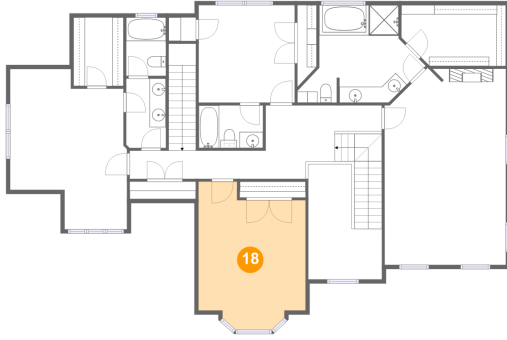
**17 Floor 2 - Laundry**

**Dimensions:** 7'8" x 5'11"  
**Area:** 45 sq. ft  
**Counted as living area:** Yes

**Heated:** Yes  
**Finished:** Yes  
**Enclosed:** Yes  
**Contiguous:** Yes  
**Permitted:** Yes  
**Wet space:** No  
**Addition:** No  
**Conversion:** No

# 3300 Greencastle Chase NE, Marietta, GA, US

## 18 Floor 3 - Bedroom



Dimensions: 13'3" x 16'0"  
Area: 209 sq. ft  
Counted as living area: Yes

Heated: Yes  
Finished: Yes  
Enclosed: Yes  
Contiguous: Yes  
Permitted: Yes  
Wet space: No  
Addition: No  
Conversion: No

## 19 Floor 3 - Bath



Dimensions: 8'0" x 5'3"  
Area: 42 sq. ft  
Counted as living area: Yes

Heated: Yes  
Finished: Yes  
Enclosed: Yes  
Contiguous: Yes  
Permitted: Yes  
Wet space: Yes  
Addition: No  
Conversion: No

## 20 Floor 3 - Bath



Dimensions: 4'11" x 8'7"  
Area: 42 sq. ft  
Counted as living area: Yes

Heated: Yes  
Finished: Yes  
Enclosed: Yes  
Contiguous: Yes  
Permitted: Yes  
Wet space: Yes  
Addition: No  
Conversion: No

# 3300 Greencastle Chase NE, Marietta, GA, US

## 21 Floor 3 - W.I.C.



Dimensions: 12'11" x 7'6"  
Area: 91 sq. ft  
Counted as living area: Yes

Heated: Yes  
Finished: Yes  
Enclosed: Yes  
Contiguous: Yes  
Permitted: Yes  
Wet space: No  
Addition: No  
Conversion: No

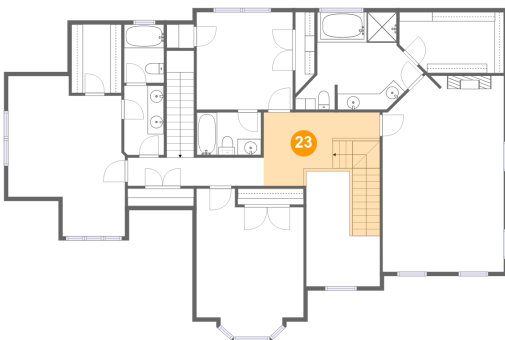
## 22 Floor 3 - Bedroom



Dimensions: 11'11" x 12'1"  
Area: 144 sq. ft  
Counted as living area: Yes

Heated: Yes  
Finished: Yes  
Enclosed: Yes  
Contiguous: Yes  
Permitted: Yes  
Wet space: No  
Addition: No  
Conversion: No

## 23 Floor 3 - Hall



Dimensions: 14'5" x 9'1"  
Area: 145 sq. ft  
Counted as living area: Yes

Heated: Yes  
Finished: Yes  
Enclosed: Yes  
Contiguous: Yes  
Permitted: Yes  
Wet space: No  
Addition: No  
Conversion: No

# 3300 Greencastle Chase NE, Marietta, GA, US

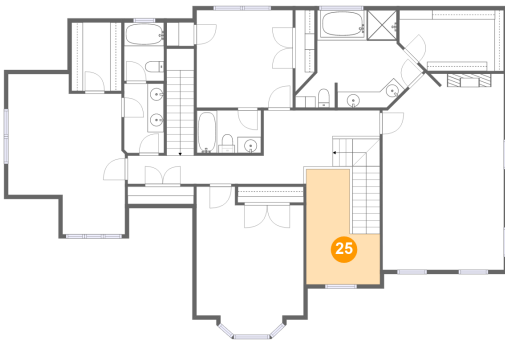
## 24 Floor 3 - Primary Bedroom



Dimensions: 15'0" x 24'5"  
Area: 352 sq. ft  
Counted as living area: Yes

Heated: Yes  
Finished: Yes  
Enclosed: Yes  
Contiguous: Yes  
Permitted: Yes  
Wet space: No  
Addition: No  
Conversion: No

## 25 Floor 3 - Open To Below



Dimensions: 9'1" x 14'3"  
Area: 100 sq. ft  
Counted as living area: No

Heated: No  
Finished: No  
Enclosed: No  
Contiguous: Yes  
Permitted: No  
Wet space: No  
Addition: No  
Conversion: No

## 26 Floor 3 - W.I.C.



Dimensions: 6'2" x 8'6"  
Area: 53 sq. ft  
Counted as living area: Yes

Heated: Yes  
Finished: Yes  
Enclosed: Yes  
Contiguous: Yes  
Permitted: Yes  
Wet space: No  
Addition: No  
Conversion: No

# 3300 Greencastle Chase NE, Marietta, GA, US

## 27 Floor 3 - Bath



Dimensions: 4'11" x 7'3"  
Area: 36 sq. ft  
Counted as living area: Yes

Heated: Yes  
Finished: Yes  
Enclosed: Yes  
Contiguous: Yes  
Permitted: Yes  
Wet space: Yes  
Addition: No  
Conversion: No

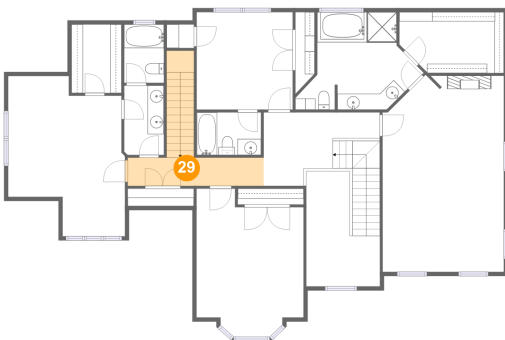
## 28 Floor 3 - Bedroom



Dimensions: 14'6" x 19'10"  
Area: 235 sq. ft  
Counted as living area: Yes

Heated: Yes  
Finished: Yes  
Enclosed: Yes  
Contiguous: Yes  
Permitted: Yes  
Wet space: No  
Addition: No  
Conversion: No

## 29 Floor 3 - Hall



Dimensions: 17'2" x 3'6"  
Area: 105 sq. ft  
Counted as living area: Yes

Heated: Yes  
Finished: Yes  
Enclosed: Yes  
Contiguous: Yes  
Permitted: Yes  
Wet space: No  
Addition: No  
Conversion: No

# 3300 Greencastle Chase NE, Marietta, GA, US

## 30 Floor 3 - Primary Bath



**Dimensions:** 13'2" x 12'1"  
**Area:** 136 sq. ft  
**Counted as living area:** Yes

**Heated:** Yes  
**Finished:** Yes  
**Enclosed:** Yes  
**Contiguous:** Yes  
**Permitted:** Yes  
**Wet space:** Yes  
**Addition:** No  
**Conversion:** No