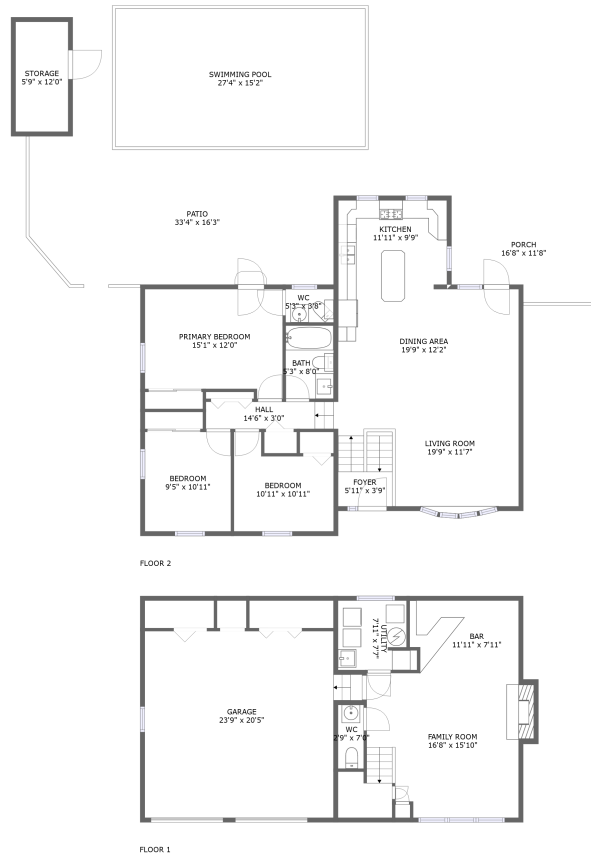



Home data report

8269 East Van Buren Drive, Mccandless Township,  
Pittsburgh, Allegheny County, Pennsylvania, United




Property summary


 **1** Garages


 **3** Bedrooms

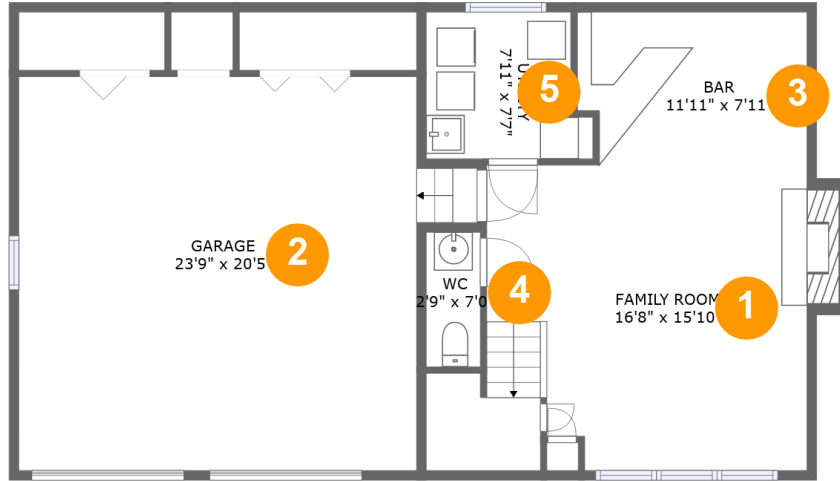
 **1** Bathrooms

 **2** Half baths

 **2** Floors

 **1,667** Gross living area sqft

 **3,044** Total sqft



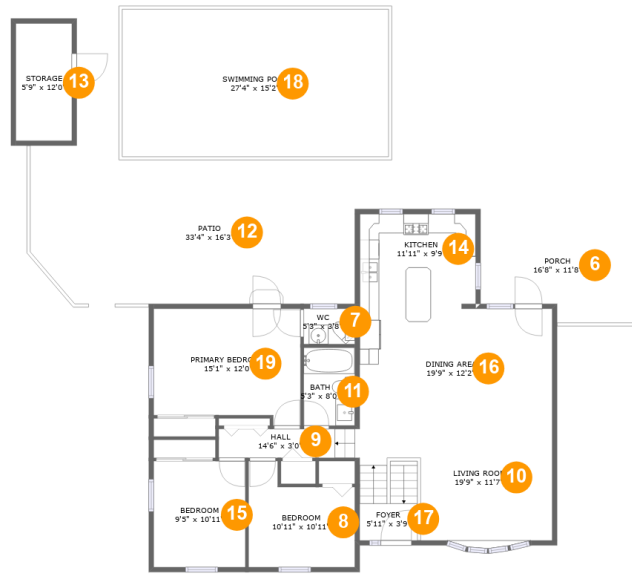
## Room dimensions

Floor 1

Total sqft: 1052

Living area: 437

#		Dimensions	sqft	Counted as living area
1	Living Room	16'8" x 15'10"	285 sq. ft	Yes
2	Garage	23'9" x 20'5"	431 sq. ft	No
3	Bar	11'11" x 7'11"	92 sq. ft	Yes
4	Bath	2'9" x 7'0"	20 sq. ft	Yes
5	Utility	7'11" x 7'7"	59 sq. ft	No



## Room dimensions

Floor 2

Total sqft: 1992

Living area: 1230

#		Dimensions	sqft	Counted as living area
6	Outdoor	16'8" x 11'8"	180 sq. ft	No
7	Bath	5'3" x 3'8"	19 sq. ft	Yes
8	Bedroom	10'11" x 10'11"	98 sq. ft	Yes
9	Hall	14'6" x 3'0"	43 sq. ft	Yes
10	Living Room	19'9" x 11'7"	211 sq. ft	Yes
11	Bath	5'3" x 8'0"	42 sq. ft	Yes
12	Outdoor	33'4" x 16'3"	494 sq. ft	No
13	Storage	5'9" x 12'0"	69 sq. ft	No
14	Kitchen	11'11" x 9'9"	116 sq. ft	Yes
15	Bedroom	9'5" x 10'11"	103 sq. ft	Yes
16	Dining Room	19'9" x 12'2"	242 sq. ft	Yes

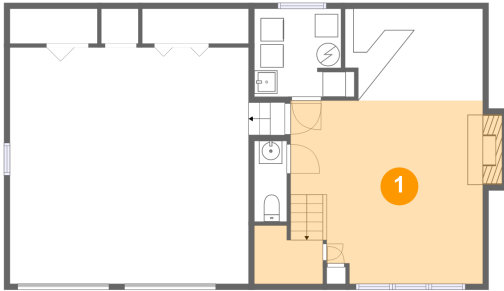
Home data report

**8269 East Van Buren Drive, Mccandless Township,  
Pittsburgh, Allegheny County, Pennsylvania, United**



#		Dimensions	sqft	Counted as living area
17	Entry	5'11" x 3'9"	22 sq. ft	Yes
18	Swimming Pool	27'4" x 15'2"	415 sq. ft	No
19	Bedroom	15'1" x 12'0"	168 sq. ft	Yes

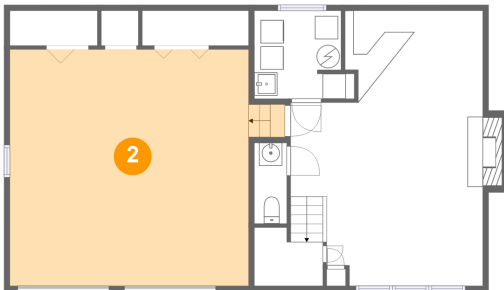
## 1 Floor 1 - Living Room



Dimensions: 16'8" x 15'10"  
Area: 285 sq. ft  
Counted as living area: Yes

Heated: Yes  
Finished: Yes  
Enclosed: Yes  
Contiguous: Yes  
Permitted: Yes  
Wet space: No  
Addition: No  
Conversion: No

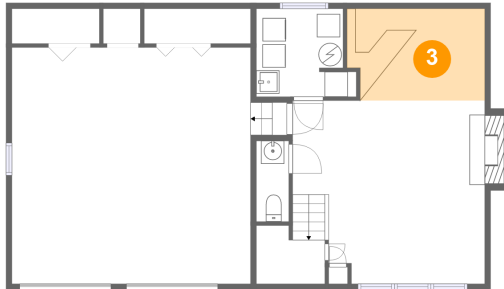
## 2 Floor 1 - Garage



Dimensions: 23'9" x 20'5"  
Area: 431 sq. ft  
Counted as living area: No

Heated: No  
Finished: No  
Enclosed: Yes  
Contiguous: Yes  
Permitted: Yes  
Wet space: No  
Addition: No  
Conversion: No

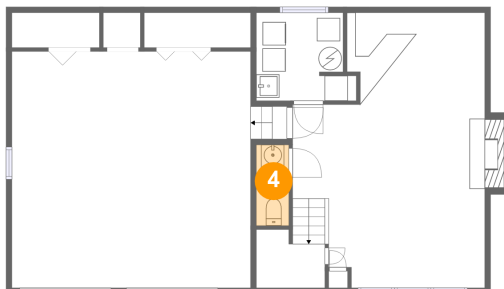
### 3 Floor 1 - Bar



Dimensions: 11'11" x 7'11"  
Area: 92 sq. ft  
Counted as living area: Yes

Heated: Yes  
Finished: Yes  
Enclosed: Yes  
Contiguous: Yes  
Permitted: Yes  
Wet space: No  
Addition: No  
Conversion: No

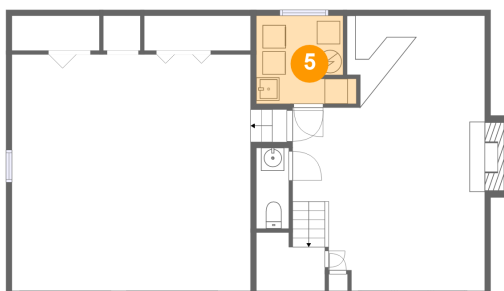
### 4 Floor 1 - Bath



Dimensions: 2'9" x 7'0"  
Area: 20 sq. ft  
Counted as living area: Yes

Heated: Yes  
Finished: Yes  
Enclosed: Yes  
Contiguous: Yes  
Permitted: Yes  
Wet space: No  
Addition: No  
Conversion: No

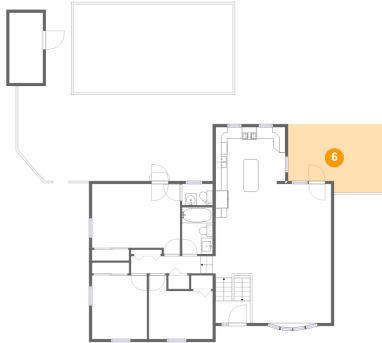
### 5 Floor 1 - Utility



Dimensions: 7'11" x 7'7"  
Area: 59 sq. ft  
Counted as living area: No

Heated: Yes  
Finished: No  
Enclosed: Yes  
Contiguous: Yes  
Permitted: Yes  
Wet space: No  
Addition: No  
Conversion: No

## 6 Floor 2 - Outdoor



Dimensions: 16'8" x 11'8"  
Area: 180 sq. ft  
Counted as living area: No

Heated: No  
Finished: Yes  
Enclosed: No  
Contiguous: Yes  
Permitted: Yes  
Wet space: No  
Addition: No  
Conversion: No

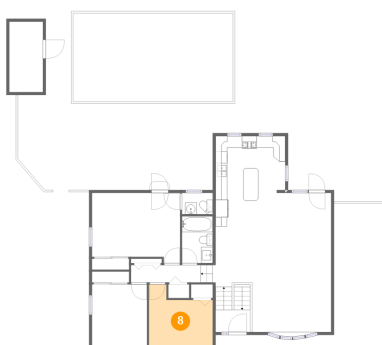
## 7 Floor 2 - Bath



Dimensions: 5'3" x 3'8"  
Area: 19 sq. ft  
Counted as living area: Yes

Heated: Yes  
Finished: Yes  
Enclosed: Yes  
Contiguous: Yes  
Permitted: Yes  
Wet space: No  
Addition: No  
Conversion: No

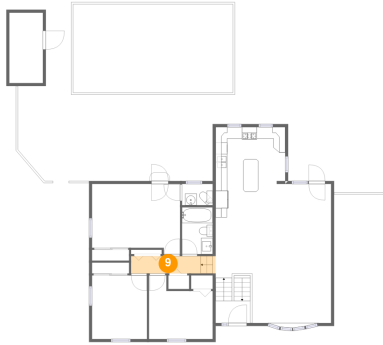
## 8 Floor 2 - Bedroom



Dimensions: 10'11" x 10'11"  
Area: 98 sq. ft  
Counted as living area: Yes

Heated: Yes  
Finished: Yes  
Enclosed: Yes  
Contiguous: Yes  
Permitted: Yes  
Wet space: No  
Addition: No  
Conversion: No

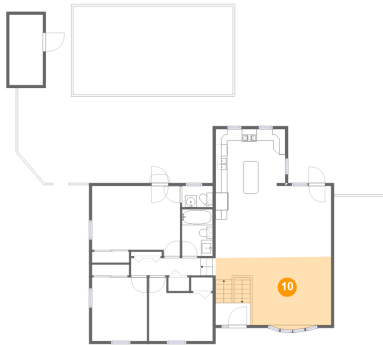
**9** Floor 2 - Hall



Dimensions: 14'6" x 3'0"  
Area: 43 sq. ft  
Counted as living area: Yes

Heated: Yes  
Finished: Yes  
Enclosed: Yes  
Contiguous: Yes  
Permitted: Yes  
Wet space: No  
Addition: No  
Conversion: No

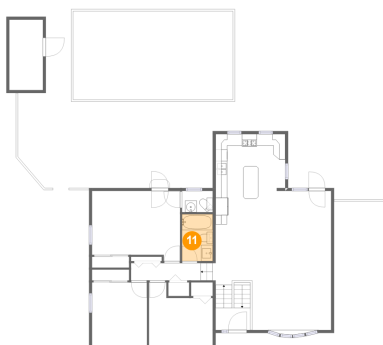
**10** Floor 2 - Living Room



Dimensions: 19'9" x 11'7"  
Area: 211 sq. ft  
Counted as living area: Yes

Heated: Yes  
Finished: Yes  
Enclosed: Yes  
Contiguous: Yes  
Permitted: Yes  
Wet space: No  
Addition: No  
Conversion: No

**11** Floor 2 - Bath



Dimensions: 5'3" x 8'0"  
Area: 42 sq. ft  
Counted as living area: Yes

Heated: Yes  
Finished: Yes  
Enclosed: Yes  
Contiguous: Yes  
Permitted: Yes  
Wet space: Yes  
Addition: No  
Conversion: No



## 12 Floor 2 - Outdoor



Dimensions: 33'4" x 16'3"  
Area: 494 sq. ft  
Counted as living area: No

Heated: No  
Finished: Yes  
Enclosed: No  
Contiguous: Yes  
Permitted: Yes  
Wet space: No  
Addition: No  
Conversion: No

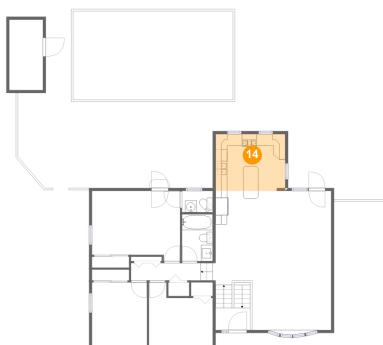
## 13 Floor 2 - Storage



Dimensions: 5'9" x 12'0"  
Area: 69 sq. ft  
Counted as living area: No

Heated: No  
Finished: No  
Enclosed: No  
Contiguous: Yes  
Permitted: Yes  
Wet space: No  
Addition: No  
Conversion: No

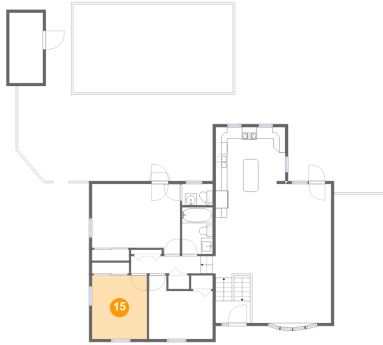
## 14 Floor 2 - Kitchen



Dimensions: 11'11" x 9'9"  
Area: 116 sq. ft  
Counted as living area: Yes

Heated: Yes  
Finished: Yes  
Enclosed: Yes  
Contiguous: Yes  
Permitted: Yes  
Wet space: No  
Addition: No  
Conversion: No

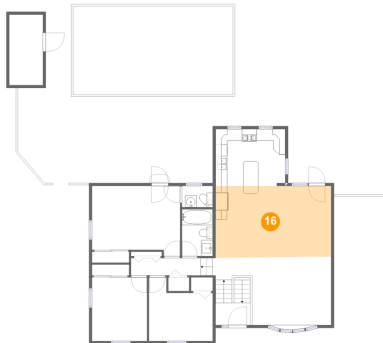
**15** Floor 2 - Bedroom



Dimensions: 9'5" x 10'11"  
Area: 103 sq. ft  
Counted as living area: Yes

Heated: Yes  
Finished: Yes  
Enclosed: Yes  
Contiguous: Yes  
Permitted: Yes  
Wet space: No  
Addition: No  
Conversion: No

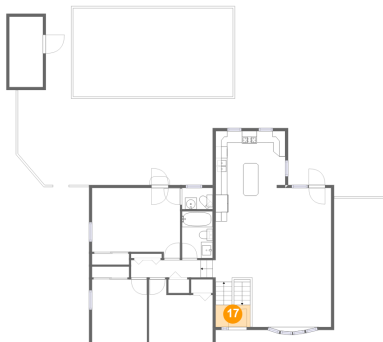
**16** Floor 2 - Dining Room



Dimensions: 19'9" x 12'2"  
Area: 242 sq. ft  
Counted as living area: Yes

Heated: Yes  
Finished: Yes  
Enclosed: Yes  
Contiguous: Yes  
Permitted: Yes  
Wet space: No  
Addition: No  
Conversion: No

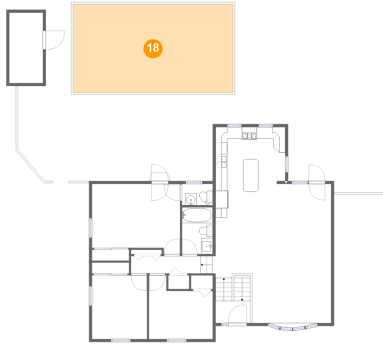
**17** Floor 2 - Entry



Dimensions: 5'11" x 3'9"  
Area: 22 sq. ft  
Counted as living area: Yes

Heated: Yes  
Finished: Yes  
Enclosed: Yes  
Contiguous: Yes  
Permitted: Yes  
Wet space: No  
Addition: No  
Conversion: No

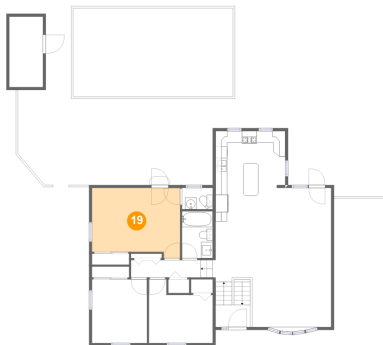
## 18 Floor 2 - Swimming Pool



Dimensions: 27'4" x 15'2"  
Area: 415 sq. ft  
Counted as living area: No

Heated: No  
Finished: No  
Enclosed: No  
Contiguous: Yes  
Permitted: No  
Wet space: No  
Addition: No  
Conversion: No

## 19 Floor 2 - Bedroom



Dimensions: 15'1" x 12'0"  
Area: 168 sq. ft  
Counted as living area: Yes

Heated: Yes  
Finished: Yes  
Enclosed: Yes  
Contiguous: Yes  
Permitted: Yes  
Wet space: No  
Addition: No  
Conversion: No