



Home report


1045 Wooded Acres Drive, Hardy, Franklin County, Virginia,  
United States, 24101




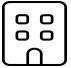
Property summary


**0**  
Garages


**4**  
Bedrooms

**2**  
Bathrooms

**1**  
Half baths

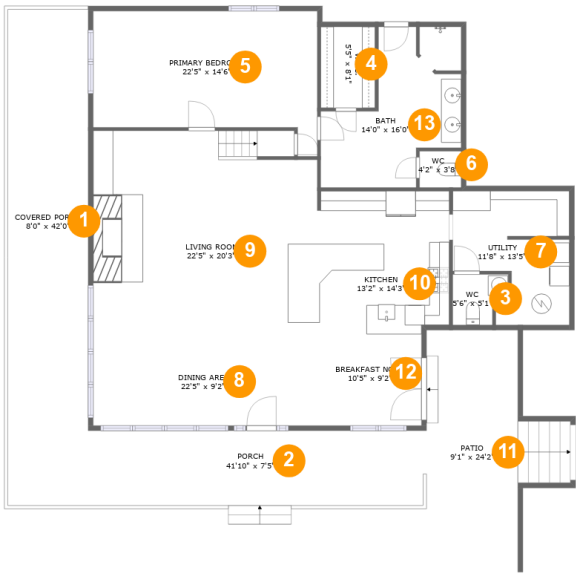
**2**  
Floors

**2,552**  
Gross living  
area sqft

**3,612**  
Total sqft

Home report

1045 Wooded Acres Drive, Hardy, Franklin County, Virginia,  
United States, 24101



Room dimensions

Floor 1 Total sqft: 2566    Living area: 1696

#		Dimensions	sqft	Counted as living area
1	Covered Porch	8'0" x 42'0"	338 sq. ft	No
2	Porch	41'10" x 7'5"	312 sq. ft	No
3	WC	5'6" x 5'1"	23 sq. ft	Yes
4	W.I.C.	5'5" x 8'1"	44 sq. ft	Yes
5	Primary Bedroom	22'5" x 14'6"	265 sq. ft	Yes
6	WC	4'2" x 3'8"	15 sq. ft	Yes
7	Utility	11'8" x 13'5"	126 sq. ft	Yes
8	Dining Area	22'5" x 9'2"	204 sq. ft	Yes
9	Living Room	22'5" x 20'3"	446 sq. ft	Yes
10	Kitchen	13'2" x 14'3"	185 sq. ft	Yes
11	Patio	9'1" x 24'2"	220 sq. ft	No

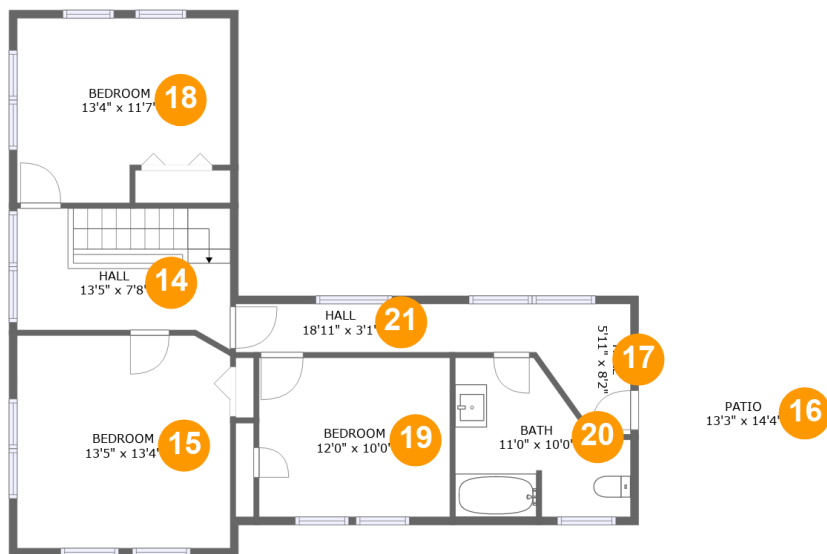
Home report

1045 Wooded Acres Drive, Hardy, Franklin County, Virginia,  
United States, 24101

#		Dimensions	sqft	Counted as living area
12	Breakfast Nook	10'5" x 9'2"	95 sq. ft	Yes
13	Bath	14'0" x 16'0"	157 sq. ft	Yes

Home report

1045 Wooded Acres Drive, Hardy, Franklin County, Virginia,  
United States, 24101



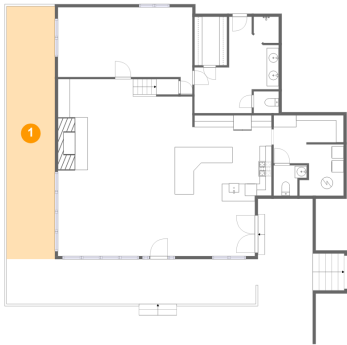
Room dimensions

Floor 2 Total sqft: 1046    Living area: 856

#		Dimensions	sqft	Counted as living area
14	Hall	13'5" x 7'8"	104 sq. ft	Yes
15	Bedroom	13'5" x 13'4"	178 sq. ft	Yes
16	Patio	13'3" x 14'4"	190 sq. ft	No
17	Hall	5'11" x 8'2"	39 sq. ft	Yes
18	Bedroom	13'4" x 11'7"	140 sq. ft	Yes
19	Bedroom	12'0" x 10'0"	120 sq. ft	Yes
20	Bath	11'0" x 10'0"	87 sq. ft	Yes
21	Hall	18'11" x 3'1"	58 sq. ft	Yes

1045 Wooded Acres Drive, Hardy, Franklin County, Virginia,  
United States, 24101

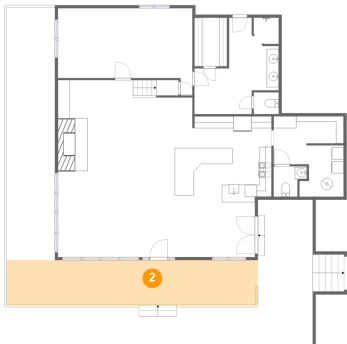
1 Floor 1 - Covered Porch



Dimensions: 8'0" x 42'0"  
Area: 338 sq. ft  
Counted as living area: No

Heated: No  
Finished: Yes  
Enclosed: No  
Contiguous: Yes  
Permitted: Yes  
Wet space: No  
Addition: No  
Conversion: No

2 Floor 1 - Porch



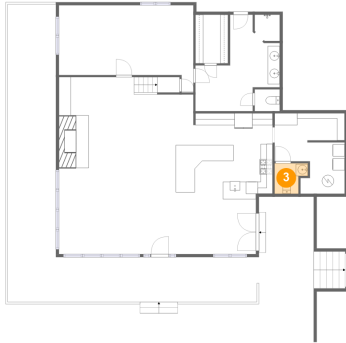
Dimensions: 41'10" x 7'5"  
Area: 312 sq. ft  
Counted as living area: No

Heated: No  
Finished: Yes  
Enclosed: No  
Contiguous: Yes  
Permitted: Yes  
Wet space: No  
Addition: No  
Conversion: No

## Home report

1045 Wooded Acres Drive, Hardy, Franklin County, Virginia,  
United States, 24101

### 3 Floor 1 - WC



Dimensions: 5'6" x 5'1"  
Area: 23 sq. ft  
Counted as living area: Yes

Heated: Yes  
Finished: Yes  
Enclosed: Yes  
Contiguous: Yes  
Permitted: Yes  
Wet space: Yes  
Addition: No  
Conversion: No

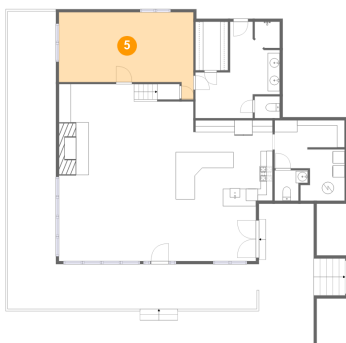
### 4 Floor 1 - W.I.C.



Dimensions: 5'5" x 8'1"  
Area: 44 sq. ft  
Counted as living area: Yes

Heated: Yes  
Finished: Yes  
Enclosed: Yes  
Contiguous: Yes  
Permitted: Yes  
Wet space: No  
Addition: No  
Conversion: No

### 5 Floor 1 - Primary Bedroom



Dimensions: 22'5" x 14'6"  
Area: 265 sq. ft  
Counted as living area: Yes

Heated: Yes  
Finished: Yes  
Enclosed: Yes  
Contiguous: Yes  
Permitted: Yes  
Wet space: No  
Addition: No  
Conversion: No

1045 Wooded Acres Drive, Hardy, Franklin County, Virginia,  
United States, 24101

## 6 Floor 1 - WC



Dimensions: 4'2" x 3'8"  
Area: 15 sq. ft  
Counted as living area: Yes

Heated: Yes  
Finished: Yes  
Enclosed: Yes  
Contiguous: Yes  
Permitted: Yes  
Wet space: Yes  
Addition: No  
Conversion: No

## 7 Floor 1 - Utility



Dimensions: 11'8" x 13'5"  
Area: 126 sq. ft  
Counted as living area: Yes

Heated: Yes  
Finished: Yes  
Enclosed: Yes  
Contiguous: Yes  
Permitted: Yes  
Wet space: No  
Addition: No  
Conversion: No

## 8 Floor 1 - Dining Area



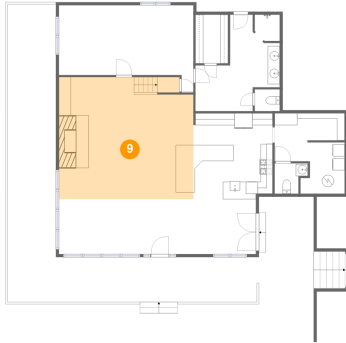
Dimensions: 22'5" x 9'2"  
Area: 204 sq. ft  
Counted as living area: Yes

Heated: Yes  
Finished: Yes  
Enclosed: Yes  
Contiguous: Yes  
Permitted: Yes  
Wet space: No  
Addition: No  
Conversion: No

## Home report

1045 Wooded Acres Drive, Hardy, Franklin County, Virginia,  
United States, 24101

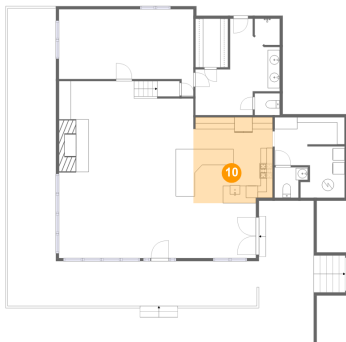
### 9 Floor 1 - Living Room



Dimensions: 22'5" x 20'3"  
Area: 446 sq. ft  
Counted as living area: Yes

Heated: Yes  
Finished: Yes  
Enclosed: Yes  
Contiguous: Yes  
Permitted: Yes  
Wet space: No  
Addition: No  
Conversion: No

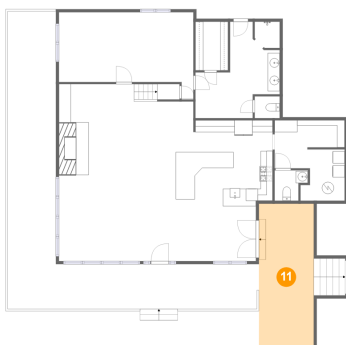
### 10 Floor 1 - Kitchen



Dimensions: 13'2" x 14'3"  
Area: 185 sq. ft  
Counted as living area: Yes

Heated: Yes  
Finished: Yes  
Enclosed: Yes  
Contiguous: Yes  
Permitted: Yes  
Wet space: No  
Addition: No  
Conversion: No

### 11 Floor 1 - Patio



Dimensions: 9'1" x 24'2"  
Area: 220 sq. ft  
Counted as living area: No

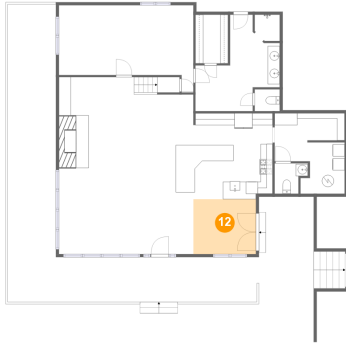
Heated: No  
Finished: Yes  
Enclosed: No  
Contiguous: Yes  
Permitted: Yes  
Wet space: No  
Addition: No  
Conversion: No



## Home report

1045 Wooded Acres Drive, Hardy, Franklin County, Virginia,  
United States, 24101

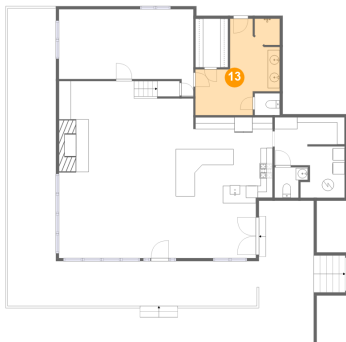
### 12 Floor 1 - Breakfast Nook



Dimensions: 10'5" x 9'2"  
Area: 95 sq. ft  
Counted as living area: Yes

Heated: Yes  
Finished: Yes  
Enclosed: Yes  
Contiguous: Yes  
Permitted: Yes  
Wet space: No  
Addition: No  
Conversion: No

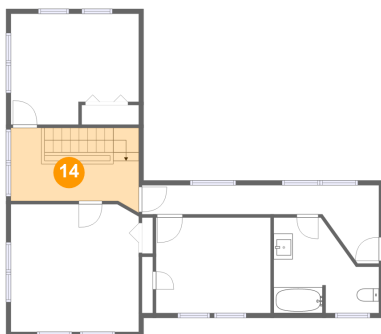
### 13 Floor 1 - Bath



Dimensions: 14'0" x 16'0"  
Area: 157 sq. ft  
Counted as living area: Yes

Heated: Yes  
Finished: Yes  
Enclosed: Yes  
Contiguous: Yes  
Permitted: Yes  
Wet space: Yes  
Addition: No  
Conversion: No

### 14 Floor 2 - Hall



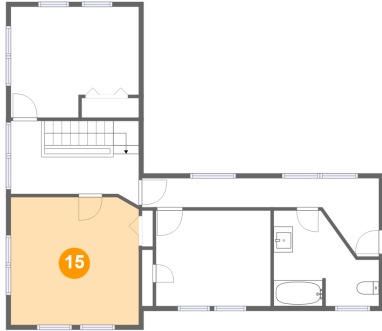
Dimensions: 13'5" x 7'8"  
Area: 104 sq. ft  
Counted as living area: Yes

Heated: Yes  
Finished: Yes  
Enclosed: Yes  
Contiguous: Yes  
Permitted: Yes  
Wet space: No  
Addition: No  
Conversion: No

## Home report

1045 Wooded Acres Drive, Hardy, Franklin County, Virginia,  
United States, 24101

### 15 Floor 2 - Bedroom



Dimensions: 13'5" x 13'4"  
Area: 178 sq. ft  
Counted as living area: Yes

Heated: Yes  
Finished: Yes  
Enclosed: Yes  
Contiguous: Yes  
Permitted: Yes  
Wet space: No  
Addition: No  
Conversion: No

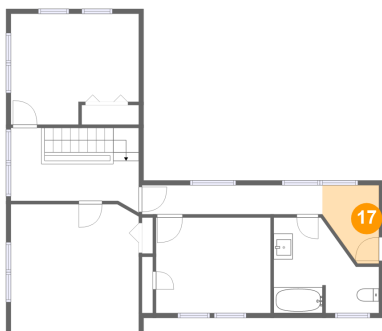
### 16 Floor 2 - Patio



Dimensions: 13'3" x 14'4"  
Area: 190 sq. ft  
Counted as living area: No

Heated: No  
Finished: Yes  
Enclosed: No  
Contiguous: Yes  
Permitted: Yes  
Wet space: No  
Addition: No  
Conversion: No

### 17 Floor 2 - Hall



Dimensions: 5'11" x 8'2"  
Area: 39 sq. ft  
Counted as living area: Yes

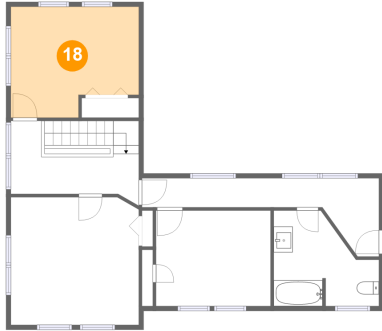
Heated: Yes  
Finished: Yes  
Enclosed: Yes  
Contiguous: Yes  
Permitted: Yes  
Wet space: No  
Addition: No  
Conversion: No

## Home report

1045 Wooded Acres Drive, Hardy, Franklin County, Virginia,  
United States, 24101

### 18 Floor 2 - Bedroom

---



Dimensions: 13'4" x 11'7"  
Area: 140 sq. ft  
Counted as living area: Yes

Heated: Yes  
Finished: Yes  
Enclosed: Yes  
Contiguous: Yes  
Permitted: Yes  
Wet space: No  
Addition: No  
Conversion: No

### 19 Floor 2 - Bedroom

---

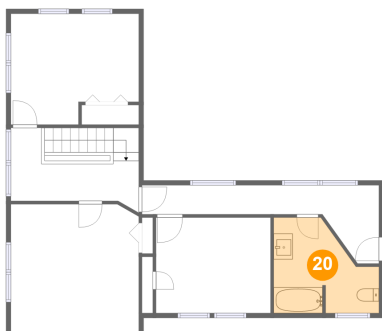


Dimensions: 12'0" x 10'0"  
Area: 120 sq. ft  
Counted as living area: Yes

Heated: Yes  
Finished: Yes  
Enclosed: Yes  
Contiguous: Yes  
Permitted: Yes  
Wet space: No  
Addition: No  
Conversion: No

### 20 Floor 2 - Bath

---



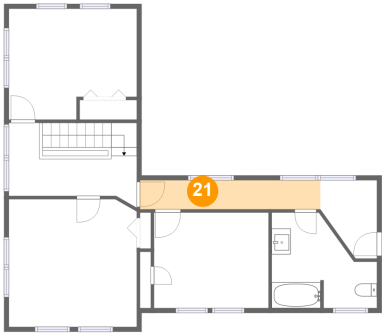
Dimensions: 11'0" x 10'0"  
Area: 87 sq. ft  
Counted as living area: Yes

Heated: Yes  
Finished: Yes  
Enclosed: Yes  
Contiguous: Yes  
Permitted: Yes  
Wet space: Yes  
Addition: No  
Conversion: No

Home report

1045 Wooded Acres Drive, Hardy, Franklin County, Virginia,  
United States, 24101

21 Floor 2 - Hall



Dimensions: 18'11" x 3'1"  
Area: 58 sq. ft  
Counted as living area: Yes

Heated: Yes  
Finished: Yes  
Enclosed: Yes  
Contiguous: Yes  
Permitted: Yes  
Wet space: No  
Addition: No  
Conversion: No