

Home report

514 Santee Road Northeast, Plantation Court, Hollins, Roanoke,
Roanoke County, Virginia, United States, 24019



Total Area: 2001 sq. ft
Below Ground: 913 sq. ft, Floor 2: 1088 sq. ft
Excluded: Utility 20 sq. ft, Undefined 11 sq. ft, Fireplace 13 sq. ft, Screened porch 157 sq. ft, Porch 29 sq. ft, Deck 317 sq. ft, Walls: 160 sq. ft

Property summary

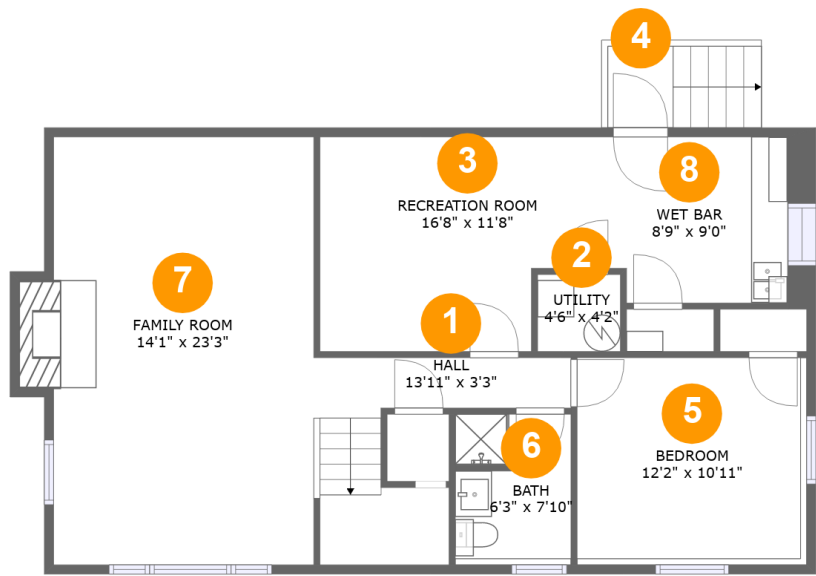
 **2** Floors

 **3** Bedrooms

 **2** Bathrooms

Home report

514 Santee Road Northeast, Plantation Court, Hollins, Roanoke,
Roanoke County, Virginia, United States, 24019



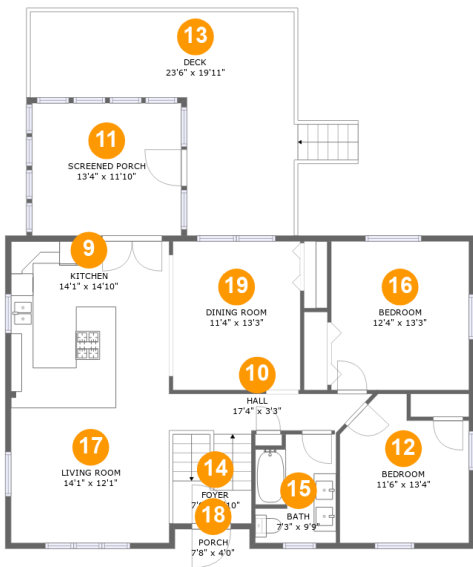
Room dimensions

Floor 1 Below ground Total:913sqft Excluded: 44sqft

#		Max Dimensions	sqft	Included
1	Hall	13'11" x 3'3"	83 sq. ft	Yes
2	Utility	4'6" x 4'2"	19 sq. ft	No
3	Recreation Room	16'8" x 11'8"	171 sq. ft	Yes
4	Outdoor	3'7" x 4'5"	37 sq. ft	No
5	Bedroom	12'2" x 10'11"	140 sq. ft	Yes
6	Bath	6'3" x 7'10"	50 sq. ft	Yes
7	Family Room	14'1" x 23'3"	339 sq. ft	Yes
8	Wet Bar	8'9" x 9'0"	79 sq. ft	Yes

Home report

514 Santee Road Northeast, Plantation Court, Hollins, Roanoke,
Roanoke County, Virginia, United States, 24019



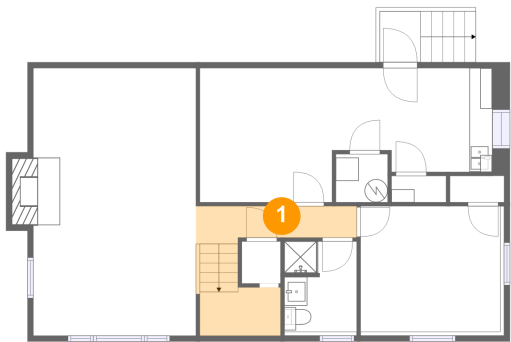
Room dimensions

Floor 2 Total:1088sqft Excluded: 503sqft

#		Max Dimensions	sqft	Included
9	Kitchen	14'1" x 14'10"	210 sq. ft	Yes
10	Hall	17'4" x 3'3"	54 sq. ft	Yes
11	Screened Porch	13'4" x 11'10"	157 sq. ft	No
12	Bedroom	11'6" x 13'4"	134 sq. ft	Yes
13	Deck	23'6" x 19'11"	317 sq. ft	No
14	Foyer	7'0" x 3'10"	61 sq. ft	Yes
15	Bath	7'3" x 9'9"	66 sq. ft	Yes
16	Bedroom	12'4" x 13'3"	163 sq. ft	Yes
17	Living Room	14'1" x 12'1"	170 sq. ft	Yes
18	Porch	7'8" x 4'0"	29 sq. ft	No
19	Dining Room	11'4" x 13'3"	151 sq. ft	Yes

514 Santee Road Northeast, Plantation Court, Hollins, Roanoke,
Roanoke County, Virginia, United States, 24019

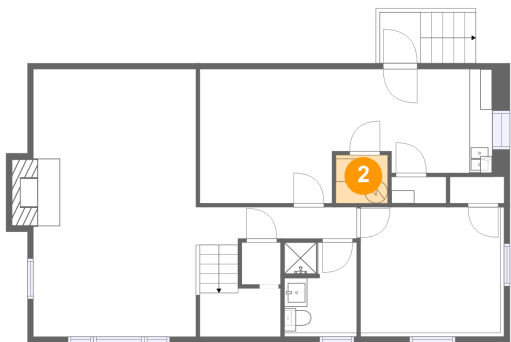
1 Floor 1 - Hall



Max Dimensions: 13'11" x 3'3"
Calculated Area: 83 sq. ft
Included: Yes

Heated: Yes
Finished: Yes
Enclosed: Yes
Contiguous: Yes
Permitted: Yes
Wet space: No
Addition: No
Conversion: No

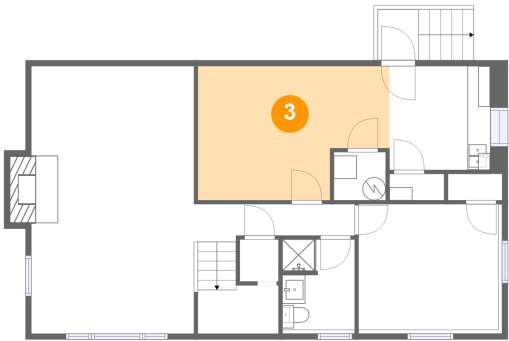
2 Floor 1 - Utility



Max Dimensions: 4'6" x 4'2"
Calculated Area: 19 sq. ft
Included: No

Heated: Yes
Finished: No
Enclosed: Yes
Contiguous: Yes
Permitted: Yes
Wet space: No
Addition: No
Conversion: No

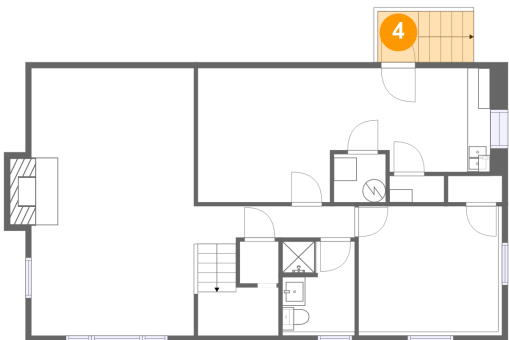
3 Floor 1 - Recreation Room



Max Dimensions: 16'8" x 11'8"
Calculated Area: 171 sq. ft
Included: Yes

Heated: Yes
Finished: Yes
Enclosed: Yes
Contiguous: Yes
Permitted: Yes
Wet space: No
Addition: No
Conversion: No

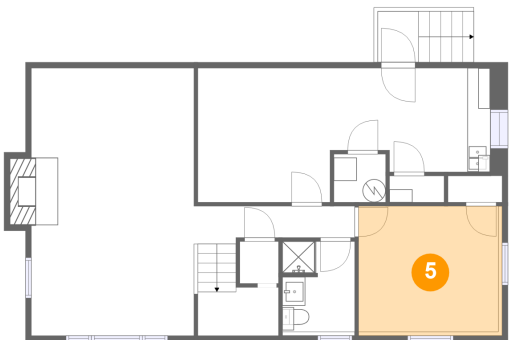
4 Floor 1 - Outdoor



Max Dimensions: 3'7" x 4'5"
Calculated Area: 37 sq. ft
Included: No

Heated: No
Finished: No
Enclosed: No
Contiguous: Yes
Permitted: No
Wet space: No
Addition: No
Conversion: No

5 Floor 1 - Bedroom

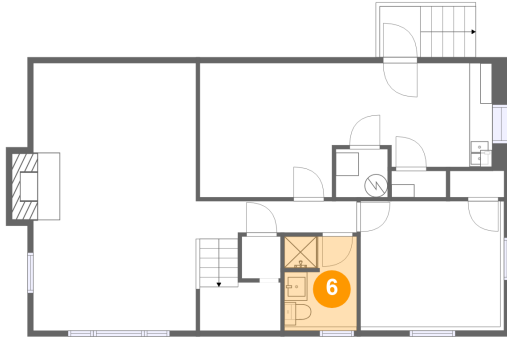


Max Dimensions: 12'2" x 10'11"
Calculated Area: 140 sq. ft
Included: Yes

Heated: Yes
Finished: Yes
Enclosed: Yes
Contiguous: Yes
Permitted: Yes
Wet space: No
Addition: No
Conversion: No

514 Santee Road Northeast, Plantation Court, Hollins, Roanoke,
Roanoke County, Virginia, United States, 24019

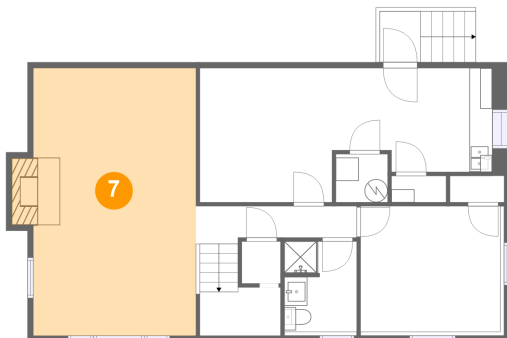
6 Floor 1 - Bath



Max Dimensions: 6'3" x 7'10"
Calculated Area: 50 sq. ft
Included: Yes

Heated: Yes
Finished: Yes
Enclosed: Yes
Contiguous: Yes
Permitted: Yes
Wet space: Yes
Addition: No
Conversion: No

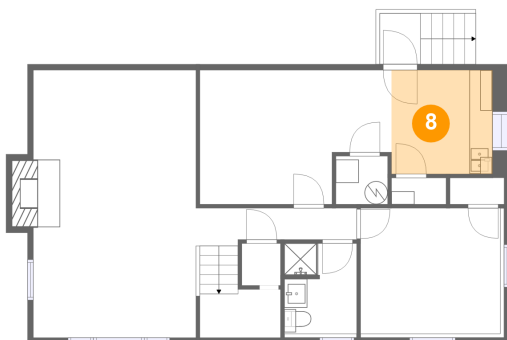
7 Floor 1 - Family Room



Max Dimensions: 14'1" x 23'3"
Calculated Area: 339 sq. ft
Included: Yes

Heated: Yes
Finished: Yes
Enclosed: Yes
Contiguous: Yes
Permitted: Yes
Wet space: No
Addition: No
Conversion: No

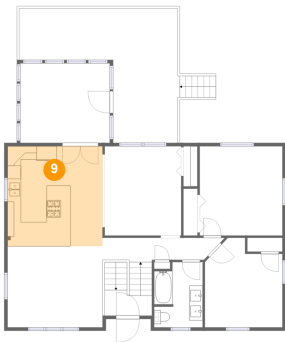
8 Floor 1 - Wet Bar



Max Dimensions: 8'9" x 9'0"
Calculated Area: 79 sq. ft
Included: Yes

Heated: Yes
Finished: Yes
Enclosed: Yes
Contiguous: Yes
Permitted: Yes
Wet space: No
Addition: No
Conversion: No

9 Floor 2 - Kitchen



Max Dimensions: 14'1" x 14'10"
Calculated Area: 210 sq. ft
Included: Yes

Heated: Yes
Finished: Yes
Enclosed: Yes
Contiguous: Yes
Permitted: Yes
Wet space: No
Addition: No
Conversion: No

10 Floor 2 - Hall



Max Dimensions: 17'4" x 3'3"
Calculated Area: 54 sq. ft
Included: Yes

Heated: Yes
Finished: Yes
Enclosed: Yes
Contiguous: Yes
Permitted: Yes
Wet space: No
Addition: No
Conversion: No

11 Floor 2 - Screened Porch



Max Dimensions: 13'4" x 11'10"
Calculated Area: 157 sq. ft
Included: No

Heated: No
Finished: Yes
Enclosed: No
Contiguous: Yes
Permitted: Yes
Wet space: No
Addition: No
Conversion: No

12 Floor 2 - Bedroom



Max Dimensions: 11'6" x 13'4"
Calculated Area: 134 sq. ft
Included: Yes

Heated: Yes
Finished: Yes
Enclosed: Yes
Contiguous: Yes
Permitted: Yes
Wet space: No
Addition: No
Conversion: No

13 Floor 2 - Deck



Max Dimensions: 23'6" x 19'11"
Calculated Area: 317 sq. ft
Included: No

Heated: No
Finished: Yes
Enclosed: No
Contiguous: Yes
Permitted: Yes
Wet space: No
Addition: No
Conversion: No

14 Floor 2 - Foyer



Max Dimensions: 7'0" x 3'10"
Calculated Area: 61 sq. ft
Included: Yes

Heated: Yes
Finished: Yes
Enclosed: Yes
Contiguous: Yes
Permitted: Yes
Wet space: No
Addition: No
Conversion: No

514 Santee Road Northeast, Plantation Court, Hollins, Roanoke,
Roanoke County, Virginia, United States, 24019

15 Floor 2 - Bath



Max Dimensions: 7'3" x 9'9"
Calculated Area: 66 sq. ft
Included: Yes

Heated: Yes
Finished: Yes
Enclosed: Yes
Contiguous: Yes
Permitted: Yes
Wet space: Yes
Addition: No
Conversion: No

16 Floor 2 - Bedroom



Max Dimensions: 12'4" x 13'3"
Calculated Area: 163 sq. ft
Included: Yes

Heated: Yes
Finished: Yes
Enclosed: Yes
Contiguous: Yes
Permitted: Yes
Wet space: No
Addition: No
Conversion: No

17 Floor 2 - Living Room

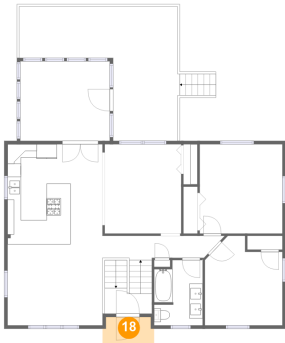


Max Dimensions: 14'1" x 12'1"
Calculated Area: 170 sq. ft
Included: Yes

Heated: Yes
Finished: Yes
Enclosed: Yes
Contiguous: Yes
Permitted: Yes
Wet space: No
Addition: No
Conversion: No

514 Santee Road Northeast, Plantation Court, Hollins, Roanoke,
Roanoke County, Virginia, United States, 24019

18 Floor 2 - Porch



Max Dimensions: 7'8" x 4'0"
Calculated Area: 29 sq. ft
Included: No

Heated: No
Finished: Yes
Enclosed: No
Contiguous: Yes
Permitted: Yes
Wet space: No
Addition: No
Conversion: No

19 Floor 2 - Dining Room



Max Dimensions: 11'4" x 13'3"
Calculated Area: 151 sq. ft
Included: Yes

Heated: Yes
Finished: Yes
Enclosed: Yes
Contiguous: Yes
Permitted: Yes
Wet space: No
Addition: No
Conversion: No