


412 South Monmouth Avenue, Monmouth, Polk County, Oregon, United States, 97361



Property summary


 **0** Garages

 **4** Bedrooms

 **2** Bathrooms

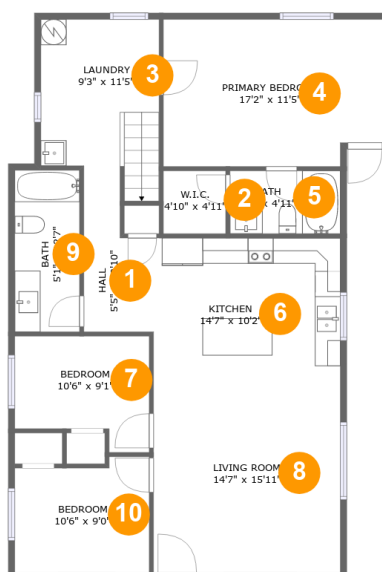
 **0** Half baths

 **2** Floors

 **1,407** Gross living area sqft

 **1,582** Total sqft

412 South Monmouth Avenue, Monmouth, Polk County, Oregon, United States, 97361



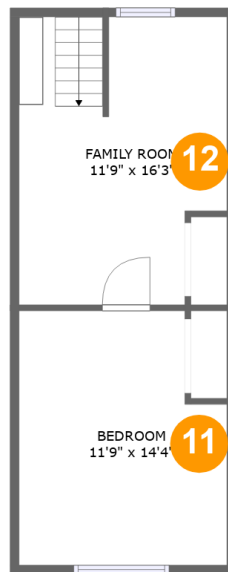
Room dimensions

Floor 1

Total sqft: 1173 Living area: 1173

#		Dimensions	sqft	Counted as living area
1	Hall	5'5" x 12'10"	55 sq. ft	Yes
2	W.I.C.	4'10" x 4'11"	24 sq. ft	Yes
3	Laundry	9'3" x 11'5"	113 sq. ft	Yes
4	Primary Bedroom	17'2" x 11'5"	190 sq. ft	Yes
5	Bath	8'7" x 4'11"	42 sq. ft	Yes
6	Kitchen	14'7" x 10'2"	148 sq. ft	Yes
7	Bedroom	10'6" x 9'1"	81 sq. ft	Yes
8	Living Room	14'7" x 15'11"	232 sq. ft	Yes
9	Bath	5'1" x 12'7"	64 sq. ft	Yes
10	Bedroom	10'6" x 9'0"	88 sq. ft	Yes

412 South Monmouth Avenue, Monmouth, Polk County, Oregon, United States, 97361



Room dimensions

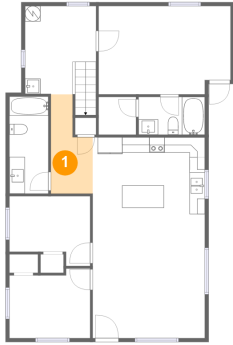
Floor 2

Total sqft: 409 Living area: 234

#		Dimensions	sqft	Counted as living area
11	Bedroom	11'9" x 14'4"	101 sq. ft	Yes
12	Family Room	11'9" x 16'3"	113 sq. ft	Yes

412 South Monmouth Avenue, Monmouth, Polk County, Oregon, United States, 97361

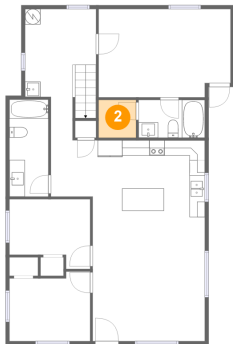
1 Floor 1 - Hall



Dimensions: 5'5" x 12'10"
Area: 55 sq. ft
Counted as living area: Yes

Heated: Yes
Finished: Yes
Enclosed: Yes
Contiguous: Yes
Permitted: Yes
Wet space: No
Addition: No
Conversion: No

2 Floor 1 - W.I.C.

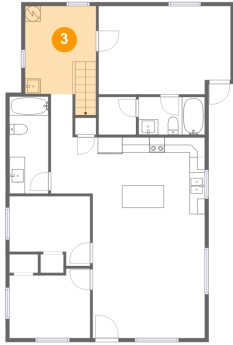


Dimensions: 4'10" x 4'11"
Area: 24 sq. ft
Counted as living area: Yes

Heated: Yes
Finished: Yes
Enclosed: Yes
Contiguous: Yes
Permitted: Yes
Wet space: No
Addition: No
Conversion: No

412 South Monmouth Avenue, Monmouth, Polk County, Oregon, United States, 97361

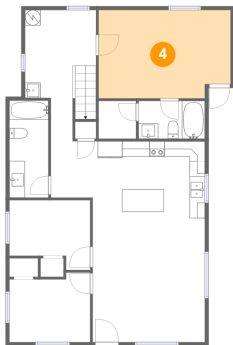
3 Floor 1 - Laundry



Dimensions: 9'3" x 11'5"
Area: 113 sq. ft
Counted as living area: Yes

Heated: Yes
Finished: Yes
Enclosed: Yes
Contiguous: Yes
Permitted: Yes
Wet space: No
Addition: No
Conversion: No

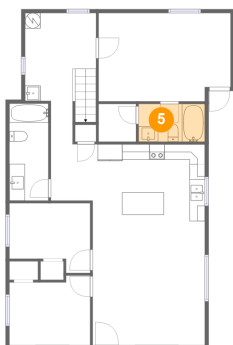
4 Floor 1 - Primary Bedroom



Dimensions: 17'2" x 11'5"
Area: 190 sq. ft
Counted as living area: Yes

Heated: Yes
Finished: Yes
Enclosed: Yes
Contiguous: Yes
Permitted: Yes
Wet space: No
Addition: No
Conversion: No

5 Floor 1 - Bath

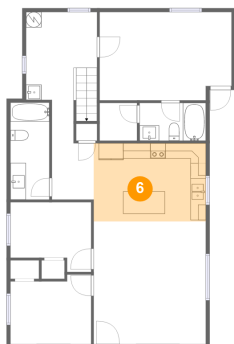


Dimensions: 8'7" x 4'11"
Area: 42 sq. ft
Counted as living area: Yes

Heated: Yes
Finished: Yes
Enclosed: Yes
Contiguous: Yes
Permitted: Yes
Wet space: Yes
Addition: No
Conversion: No

412 South Monmouth Avenue, Monmouth, Polk County, Oregon, United States, 97361

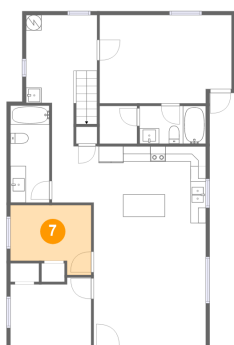
6 Floor 1 - Kitchen



Dimensions: 14'7" x 10'2"
Area: 148 sq. ft
Counted as living area: Yes

Heated: Yes
Finished: Yes
Enclosed: Yes
Contiguous: Yes
Permitted: Yes
Wet space: No
Addition: No
Conversion: No

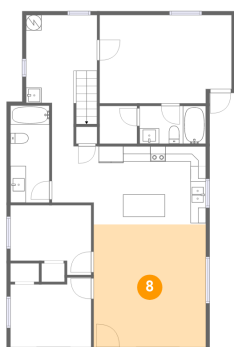
7 Floor 1 - Bedroom



Dimensions: 10'6" x 9'1"
Area: 81 sq. ft
Counted as living area: Yes

Heated: Yes
Finished: Yes
Enclosed: Yes
Contiguous: Yes
Permitted: Yes
Wet space: No
Addition: No
Conversion: No

8 Floor 1 - Living Room

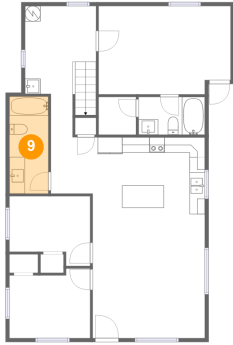


Dimensions: 14'7" x 15'11"
Area: 232 sq. ft
Counted as living area: Yes

Heated: Yes
Finished: Yes
Enclosed: Yes
Contiguous: Yes
Permitted: Yes
Wet space: No
Addition: No
Conversion: No

412 South Monmouth Avenue, Monmouth, Polk County, Oregon, United States, 97361

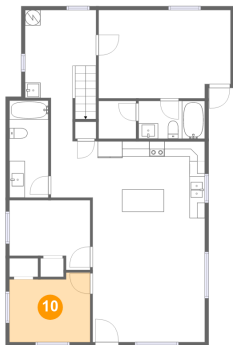
9 Floor 1 - Bath



Dimensions: 5'1" x 12'7"
Area: 64 sq. ft
Counted as living area: Yes

Heated: Yes
Finished: Yes
Enclosed: Yes
Contiguous: Yes
Permitted: Yes
Wet space: Yes
Addition: No
Conversion: No

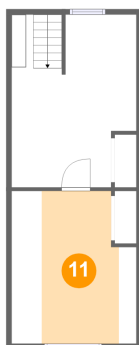
10 Floor 1 - Bedroom



Dimensions: 10'6" x 9'0"
Area: 88 sq. ft
Counted as living area: Yes

Heated: Yes
Finished: Yes
Enclosed: Yes
Contiguous: Yes
Permitted: Yes
Wet space: No
Addition: No
Conversion: No

11 Floor 2 - Bedroom

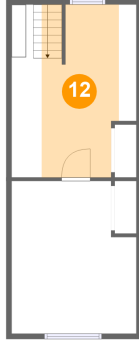


Dimensions: 11'9" x 14'4"
Area: 101 sq. ft
Counted as living area: Yes

Heated: Yes
Finished: Yes
Enclosed: Yes
Contiguous: Yes
Permitted: Yes
Wet space: No
Addition: No
Conversion: No

**412 South Monmouth Avenue, Monmouth, Polk
County, Oregon, United States, 97361**

12 Floor 2 - Family Room



Dimensions: 11'9" x 16'3"
Area: 113 sq. ft
Counted as living area: Yes

Heated: Yes
Finished: Yes
Enclosed: Yes
Contiguous: Yes
Permitted: Yes
Wet space: No
Addition: No
Conversion: No