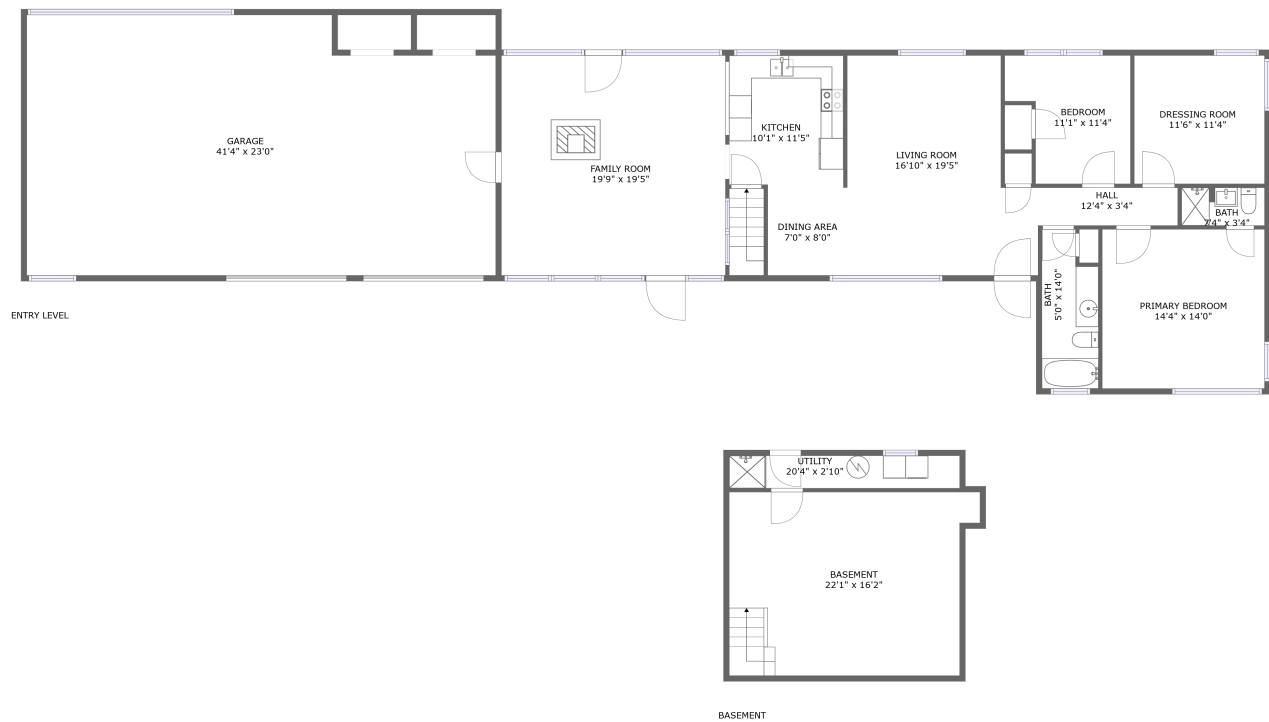


Home report

3091 Pitzer Road, Roanoke, Roanoke County, Virginia, United States, 24014



Total GLA: 1658 sq. ft

Floor 1: 0 sq. ft, Floor 2: 1658 sq. ft

Excluded: Basement 369 sq. ft, Utility 72 sq. ft, Garage 944 sq. ft

Property summary

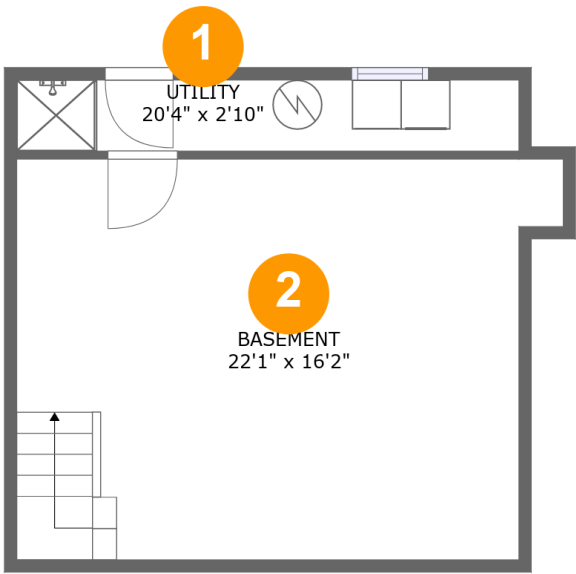
2 Floors

2 Bedrooms

2 Bathrooms

1 Garages

3091 Pitzer Road, Roanoke, Roanoke County, Virginia, United States, 24014



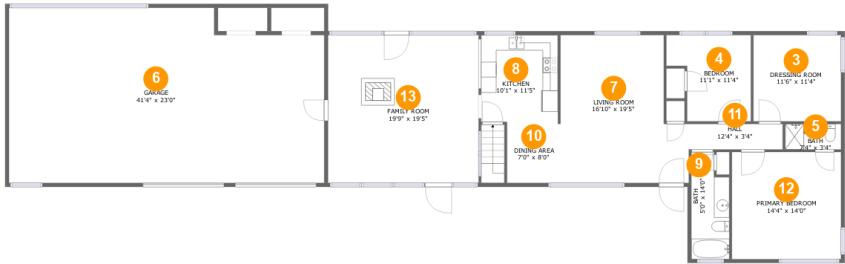
Room dimensions

Floor 1 Total:0sqft Excluded: 441sqft

#		Max Dimensions	sqft	Included
1	Utility	20'4" x 2'10"	58 sq. ft	No
2	Basement	22'1" x 16'2"	334 sq. ft	No

Home report

3091 Pitzer Road, Roanoke, Roanoke County, Virginia, United States, 24014



Room dimensions

Floor 2

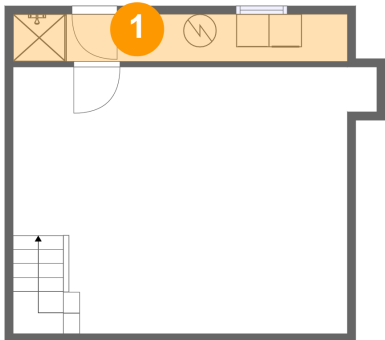
Total:1658sqft

Excluded: 944sqft

#		Max Dimensions	sqft	Included
3	Dressing Room	11'6" x 11'4"	130 sq. ft	Yes
4	Bedroom	11'1" x 11'4"	106 sq. ft	Yes
5	Bath	7'4" x 3'4"	24 sq. ft	Yes
6	Garage	41'4" x 23'0"	898 sq. ft	No
7	Living Room	16'10" x 19'5"	288 sq. ft	Yes
8	Kitchen	10'1" x 11'5"	117 sq. ft	Yes
9	Bath	5'0" x 14'0"	63 sq. ft	Yes
10	Dining Area	7'0" x 8'0"	56 sq. ft	Yes
11	Hall	12'4" x 3'4"	41 sq. ft	Yes
12	Primary Bedroom	14'4" x 14'0"	201 sq. ft	Yes
13	Family Room	19'9" x 19'5"	383 sq. ft	Yes

3091 Pitzer Road, Roanoke, Roanoke County, Virginia, United States, 24014

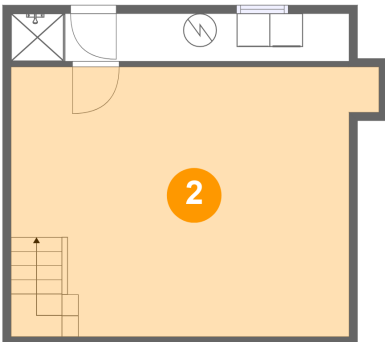
1 Floor 1 - Utility



Max Dimensions: 20'4" x 2'10"
Calculated Area: 58 sq. ft
Included: No

Heated: Yes
Finished: No
Enclosed: Yes
Contiguous: Yes
Permitted: Yes
Wet space: No
Addition: No
Conversion: No

2 Floor 1 - Basement



Max Dimensions: 22'1" x 16'2"
Calculated Area: 334 sq. ft
Included: No

Heated: Yes
Finished: No
Enclosed: Yes
Contiguous: Yes
Permitted: Yes
Wet space: No
Addition: No
Conversion: No

3091 Pitzer Road, Roanoke, Roanoke County, Virginia, United States, 24014

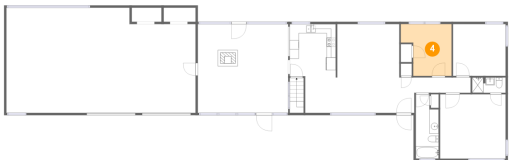
3 Floor 2 - Dressing Room



Max Dimensions: 11'6" x 11'4"
Calculated Area: 130 sq. ft
Included: Yes

Heated: Yes
Finished: Yes
Enclosed: Yes
Contiguous: Yes
Permitted: Yes
Wet space: No
Addition: No
Conversion: No

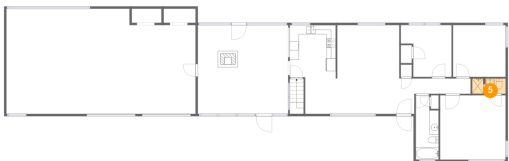
4 Floor 2 - Bedroom



Max Dimensions: 11'1" x 11'4"
Calculated Area: 106 sq. ft
Included: Yes

Heated: Yes
Finished: Yes
Enclosed: Yes
Contiguous: Yes
Permitted: Yes
Wet space: No
Addition: No
Conversion: No

5 Floor 2 - Bath



Max Dimensions: 7'4" x 3'4"
Calculated Area: 24 sq. ft
Included: Yes

Heated: Yes
Finished: Yes
Enclosed: Yes
Contiguous: Yes
Permitted: Yes
Wet space: Yes
Addition: No
Conversion: No

3091 Pitzer Road, Roanoke, Roanoke County, Virginia, United States, 24014

6 Floor 2 - Garage



Max Dimensions: 41'4" x 23'0"
Calculated Area: 898 sq. ft
Included: No

Heated: No
Finished: No
Enclosed: Yes
Contiguous: Yes
Permitted: Yes
Wet space: No
Addition: No
Conversion: No

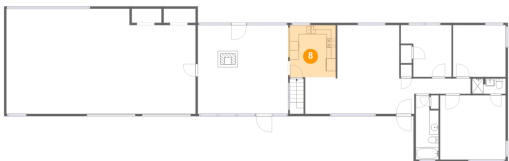
7 Floor 2 - Living Room



Max Dimensions: 16'10" x 19'5"
Calculated Area: 288 sq. ft
Included: Yes

Heated: Yes
Finished: Yes
Enclosed: Yes
Contiguous: Yes
Permitted: Yes
Wet space: No
Addition: No
Conversion: No

8 Floor 2 - Kitchen



Max Dimensions: 10'1" x 11'5"
Calculated Area: 117 sq. ft
Included: Yes

Heated: Yes
Finished: Yes
Enclosed: Yes
Contiguous: Yes
Permitted: Yes
Wet space: No
Addition: No
Conversion: No

3091 Pitzer Road, Roanoke, Roanoke County, Virginia, United States, 24014

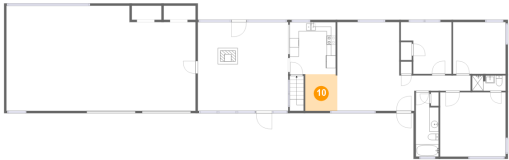
9 Floor 2 - Bath



Max Dimensions: 5'0" x 14'0"
Calculated Area: 63 sq. ft
Included: Yes

Heated: Yes
Finished: Yes
Enclosed: Yes
Contiguous: Yes
Permitted: Yes
Wet space: Yes
Addition: No
Conversion: No

10 Floor 2 - Dining Area



Max Dimensions: 7'0" x 8'0"
Calculated Area: 56 sq. ft
Included: Yes

Heated: Yes
Finished: Yes
Enclosed: Yes
Contiguous: Yes
Permitted: Yes
Wet space: No
Addition: No
Conversion: No

11 Floor 2 - Hall



Max Dimensions: 12'4" x 3'4"
Calculated Area: 41 sq. ft
Included: Yes

Heated: Yes
Finished: Yes
Enclosed: Yes
Contiguous: Yes
Permitted: Yes
Wet space: No
Addition: No
Conversion: No

3091 Pitzer Road, Roanoke, Roanoke County, Virginia, United States, 24014

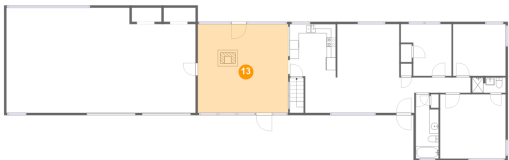
12 Floor 2 - Primary Bedroom



Max Dimensions: 14'4" x 14'0"
Calculated Area: 201 sq. ft
Included: Yes

Heated: Yes
Finished: Yes
Enclosed: Yes
Contiguous: Yes
Permitted: Yes
Wet space: No
Addition: No
Conversion: No

13 Floor 2 - Family Room



Max Dimensions: 19'9" x 19'5"
Calculated Area: 383 sq. ft
Included: Yes

Heated: Yes
Finished: Yes
Enclosed: Yes
Contiguous: Yes
Permitted: Yes
Wet space: No
Addition: No
Conversion: No