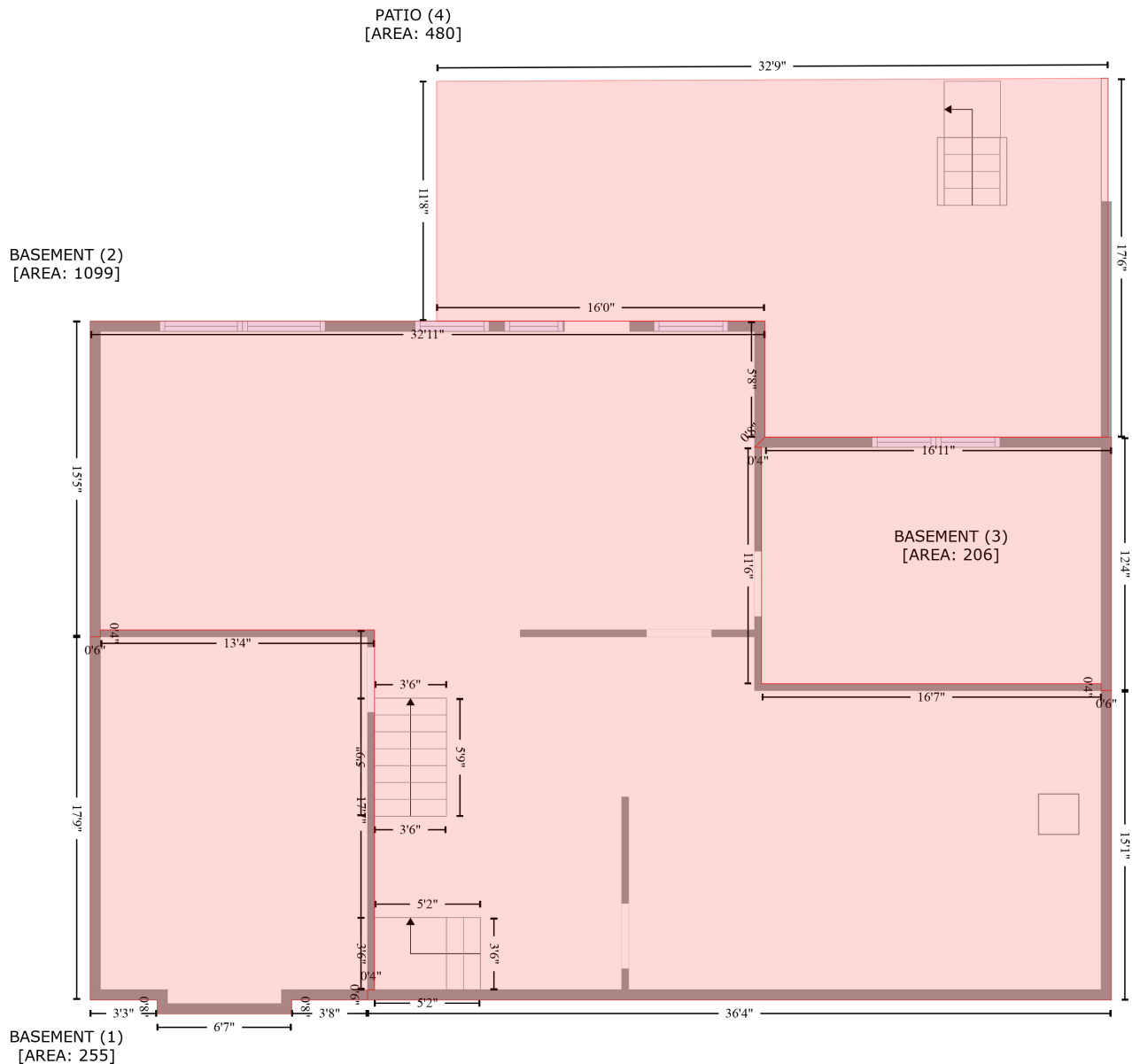


2593 Cozy Cove, York, York County, South Carolina, United States, 29745

Gross Living Area: 2723 sq. ft



Space	Area (sq. ft)	Calculation <small>Coordinate Polygon Area Algorithm using inches</small>
BASEMENT (Non-living area)	255	$-\left((183 + 183) * (433.1 - 643.6) + (183 + 179) * (643.6 - 643.6) + (179 + 179) * (643.6 - 649.6) + (179 + 134.6) * (649.6 - 649.6) + (134.6 + 134.6) * (649.6 - 657.8) + (134.6 + 55.8) * (657.8 - 657.8) + (55.8 + 55.8) * (657.8 - 649.6) + (55.8 + 16.5) * (649.6 - 649.6) + (16.5 + 16.5) * (649.6 - 437.1) + (16.5 + 22.5) * (437.1 - 437.1) + (22.5 + 22.5) * (437.1 - 433.1) + (22.5 + 183) * (433.1 - 433.1)\right) * 0.5 * 0.00694$
BASEMENT	1099	$-\left((411.7 + 411.7) * (252.3 - 320.2) + (411.7 + 405.7) * (320.2 - 326.2) + (405.7 + 409.7) * (326.2 - \right.$

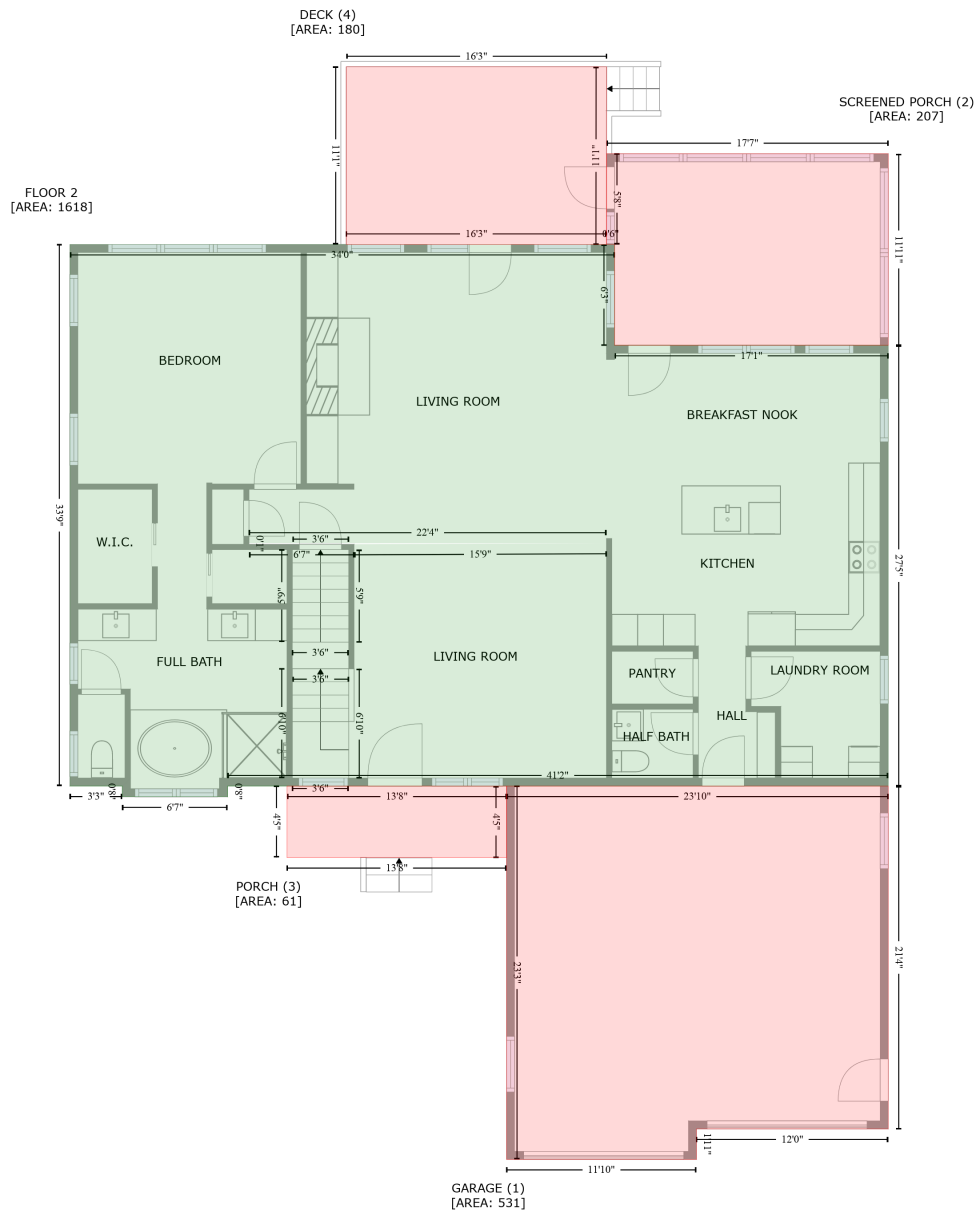
2593 Cozy Cove, York, York County, South Carolina, United States, 29745

Gross Living Area: 2723 sq. ft

Space	Area (sq. ft)	Calculation <small>Coordinate Polygon Area Algorithm using inches</small>
(Non-living area)		$326.2 + (409.7 + 409.7) * (326.2 - 464.5) + (409.7 + 608.6) * (464.5 - 464.5) + (608.6 + 608.6) * (464.5 - 468.5) + (608.6 + 614.6) * (468.5 - 468.5) + (614.6 + 614.6) * (468.5 - 649.6) + (614.6 + 179) * (649.6 - 649.6) + (179 + 179) * (649.6 - 643.6) + (179 + 183) * (643.6 - 643.6) + (183 + 183) * (643.6 - 433.1) + (183 + 22.5) * (433.1 - 433.1) + (22.5 + 22.5) * (433.1 - 437.1) + (22.5 + 16.5) * (437.1 - 437.1) + (16.5 + 16.5) * (437.1 - 252.3) + (16.5 + 411.7) * (252.3 - 252.3) * 0.5 * 0.00694$
BASEMENT (Non-living area)	206	$-((614.6 + 614.6) * (320.2 - 468.5) + (614.6 + 608.6) * (468.5 - 468.5) + (608.6 + 608.6) * (468.5 - 464.5) + (608.6 + 409.7) * (464.5 - 464.5) + (409.7 + 409.7) * (464.5 - 326.2) + (409.7 + 405.7) * (326.2 - 326.2) + (405.7 + 411.7) * (326.2 - 320.2) + (411.7 + 614.6) * (320.2 - 320.2) * 0.5 * 0.00694$
PATIO (Non-living area)	480	$-((612.6 + 612.6) * (110.2 - 320.2) + (612.6 + 411.7) * (320.2 - 320.2) + (411.7 + 411.7) * (320.2 - 252.3) + (411.7 + 219.4) * (252.3 - 252.3) + (219.4 + 219.4) * (252.3 - 112) + (219.4 + 612.6) * (112 - 110.2)) * 0.5 * 0.00694$

2593 Cozy Cove, York, York County, South Carolina, United States, 29745

Gross Living Area: 2723 sq. ft



Space

Area (sq. ft)

Calculation Coordinate Polygon Area Algorithm using inches

FLOOR 2
(Living area)

1618

$$\begin{aligned}
 & -((424.1 + 424.1) * (244.8 - 320.2) + (424.1 + 629) * (320.2 - 320.2) + (629 + 629) * (320.2 - \\
 & 649.6) + (629 + 134.6) * (649.6 - 649.6) + (134.6 + 134.6) * (649.6 - 657.8) + (134.6 + 55.8) * \\
 & (657.8 - 657.8) + (55.8 + 55.8) * (657.8 - 649.6) + (55.8 + 16.5) * (649.6 - 649.6) + (16.5 + 16.5) * \\
 & (649.6 - 244.8) + (16.5 + 424.1) * (244.8 - 244.8)) * 0.5 * 0.00694 + -((418.1 + 150.6) * (468.2 - \\
 & 468.2) + (150.6 + 150.6) * (468.2 - 469) + (150.6 + 229.2) * (469 - 469) + (229.2 + 418.1) * (469 - \\
 & 468.2)) * 0.5 * 0.00694
 \end{aligned}$$

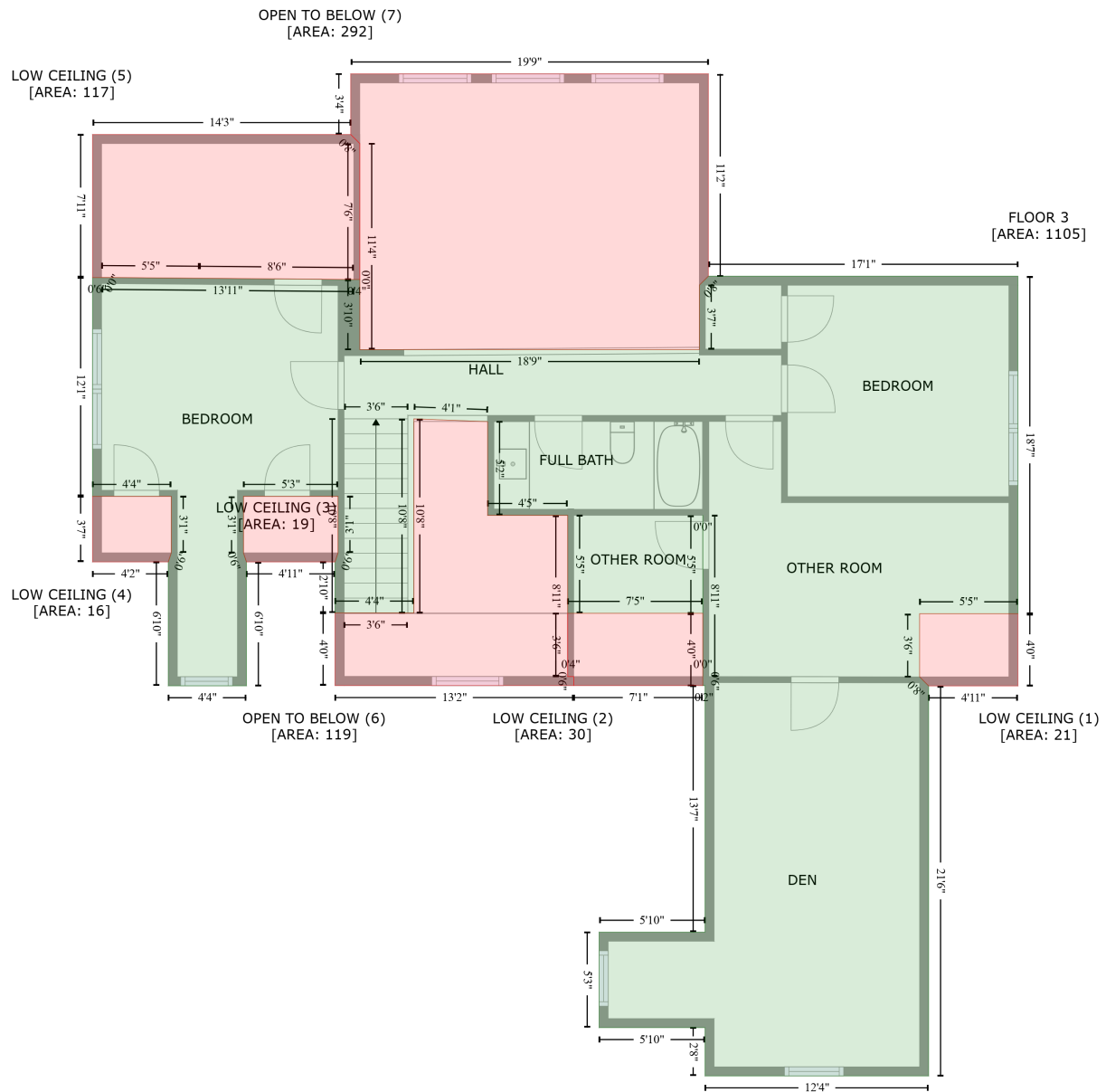
2593 Cozy Cove, York, York County, South Carolina, United States, 29745

Gross Living Area: 2723 sq. ft

Space	Area (sq. ft)	Calculation <small>Coordinate Polygon Area Algorithm using inches</small>
GARAGE (Non-living area)	531	$-\left((629 + 629) * (649.6 - 906) + (629 + 485.5) * (906 - 906) + (485.5 + 485.5) * (906 - 928.8) + (485.5 + 343.3) * (928.8 - 928.8) + (343.3 + 343.3) * (928.8 - 649.6) + (343.3 + 629) * (649.6 - 649.6)\right) * 0.5 * 0.00694$
SCREENED PORCH (Non-living area)	207	$-\left((629 + 629) * (177 - 320.2) + (629 + 424.1) * (320.2 - 320.2) + (424.1 + 424.1) * (320.2 - 244.8) + (424.1 + 418.1) * (244.8 - 244.8) + (418.1 + 418.1) * (244.8 - 177) + (418.1 + 629) * (177 - 177)\right) * 0.5 * 0.00694$
PORCH (Non-living area)	61	$-\left((343.3 + 343.3) * (649.6 - 703.1) + (343.3 + 179) * (703.1 - 703.1) + (179 + 179) * (703.1 - 649.6) + (179 + 343.3) * (649.6 - 649.6)\right) * 0.5 * 0.00694$
DECK (Non-living area)	180	$-\left((418.3 + 418.1) * (112 - 244.8) + (418.1 + 223.4) * (244.8 - 244.8) + (223.4 + 223.4) * (244.8 - 112) + (223.4 + 418.3) * (112 - 112)\right) * 0.5 * 0.00694$

2593 Cozy Cove, York, York County, South Carolina, United States, 29745

Gross Living Area: 2723 sq. ft



Space	Area (sq. ft)	Calculation <small>Coordinate Polygon Area Algorithm using inches</small>
FLOOR 3 (Living area)	1105	$ \begin{aligned} & -((629 + 629) * (378.6 - 601.9) + (629 + 563.9) * (601.9 - 601.9) + (563.9 + 563.9) * (601.9 - \\ & 643.6) + (563.9 + 569.9) * (643.6 - 649.6) + (569.9 + 569.9) * (649.6 - 907.6) + (569.9 + 421.9) * \\ & (907.6 - 907.6) + (421.9 + 421.9) * (907.6 - 875.7) + (421.9 + 351.8) * (875.7 - 875.7) + (351.8 + \\ & 351.8) * (875.7 - 812.5) + (351.8 + 421.9) * (812.5 - 812.5) + (421.9 + 421.9) * (812.5 - 649.5) + \\ & (421.9 + 420.4) * (649.5 - 649.5) + (420.4 + 420.4) * (649.5 - 643.5) + (420.4 + 420.5) * (643.5 - \\ & 643.5) + (420.5 + 420.5) * (643.5 - 536.8) + (420.5 + 420.4) * (536.8 - 536.8) + (420.4 + 420.4) * \\ & (536.8 - 601.6) + (420.4 + 331) * (601.6 - 601.6) + (331 + 331) * (601.6 - 536.8) + (331 + 278.1) * \end{aligned} $

2593 Cozy Cove, York, York County, South Carolina, United States, 29745

Gross Living Area: 2723 sq. ft

Space	Area (sq. ft)	Calculation <small>Coordinate Polygon Area Algorithm using inches</small>
		$(536.8 - 536.8) + (278.1 + 278.1) * (536.8 - 474.8) + (278.1 + 229.2) * (474.8 - 473) + (229.2 + 229.2) * (473 - 601.4) + (229.2 + 177) * (601.4 - 601.4) + (177 + 177) * (601.4 - 567.6) + (177 + 179) * (567.6 - 561.6) + (179 + 179) * (561.6 - 524.2) + (179 + 116.4) * (524.2 - 524.2) + (116.4 + 116.4) * (524.2 - 561.6) + (116.4 + 118.4) * (561.6 - 567.6) + (118.4 + 118.4) * (567.6 - 649.6) + (118.4 + 66.6) * (649.6 - 649.6) + (66.6 + 66.6) * (649.6 - 567.6) + (66.6 + 68.6) * (567.6 - 561.6) + (68.6 + 68.6) * (561.6 - 524.2) + (68.6 + 16.5) * (524.2 - 524.2) + (16.5 + 16.5) * (524.2 - 379.5) + (16.5 + 22.5) * (379.5 - 379.5) + (22.5 + 22.6) * (379.5 - 379.5) + (22.6 + 189.4) * (379.5 - 380.9) + (189.4 + 189.4) * (380.9 - 380.8) + (189.4 + 193.4) * (380.8 - 380.8) + (193.4 + 193.4) * (380.8 - 427.2) + (193.4 + 418.1) * (427.2 - 427.2) + (418.1 + 418.1) * (427.2 - 384.6) + (418.1 + 424.1) * (384.6 - 378.6) + (424.1 + 629) * (378.6 - 378.6) * 0.5 * 0.00694$
LOW CEILING (Non-living area)	21	$-(629 + 629) * (601.9 - 649.6) + (629 + 569.9) * (649.6 - 649.6) + (569.9 + 563.9) * (649.6 - 643.6) + (563.9 + 563.9) * (643.6 - 601.9) + (563.9 + 629) * (601.9 - 601.9) * 0.5 * 0.00694$
LOW CEILING (Non-living area)	30	$-(420.4 + 420.4) * (601.6 - 649.5) + (420.4 + 335) * (649.5 - 649.5) + (335 + 335) * (649.5 - 643.5) + (335 + 331) * (643.5 - 643.5) + (331 + 331) * (643.5 - 601.6) + (331 + 420.4) * (601.6 - 601.6) * 0.5 * 0.00694$
LOW CEILING (Non-living area)	19	$-(179 + 179) * (524.2 - 561.6) + (179 + 177) * (561.6 - 567.6) + (177 + 118.4) * (567.6 - 567.6) + (118.4 + 116.4) * (567.6 - 561.6) + (116.4 + 116.4) * (561.6 - 524.2) + (116.4 + 179) * (524.2 - 524.2) * 0.5 * 0.00694$
LOW CEILING (Non-living area)	16	$-(68.6 + 68.6) * (524.2 - 561.6) + (68.6 + 66.6) * (561.6 - 567.6) + (66.6 + 16.5) * (567.6 - 567.6) + (16.5 + 16.5) * (567.6 - 524.2) + (16.5 + 68.6) * (524.2 - 524.2) * 0.5 * 0.00694$
LOW CEILING (Non-living area)	117	$-(187.4 + 193.4) * (284.9 - 290.9) + (193.4 + 193.4) * (290.9 - 380.8) + (193.4 + 189.4) * (380.8 - 380.8) + (189.4 + 87.4) * (380.8 - 379.9) + (87.4 + 22.6) * (379.9 - 379.5) + (22.6 + 22.5) * (379.5 - 379.5) + (22.5 + 16.5) * (379.5 - 379.5) + (16.5 + 16.5) * (379.5 - 284.9) + (16.5 + 187.4) * (284.9 - 284.9) * 0.5 * 0.00694$
OPEN TO BELOW (Non-living area)	119	$-(229.2 + 278.1) * (473 - 474.8) + (278.1 + 278.1) * (474.8 - 536.8) + (278.1 + 331) * (536.8 - 536.8) + (331 + 331) * (536.8 - 643.5) + (331 + 335) * (643.5 - 643.5) + (335 + 335) * (643.5 - 649.5) + (335 + 177) * (649.5 - 649.5) + (177 + 177) * (649.5 - 601.4) + (177 + 229.2) * (601.4 - 601.4) + (229.2 + 229.2) * (601.4 - 473) * 0.5 * 0.00694$
OPEN TO BELOW (Non-living area)	292	$-(424.1 + 424.1) * (244.8 - 378.6) + (424.1 + 418.1) * (378.6 - 384.6) + (418.1 + 418.1) * (384.6 - 427.2) + (418.1 + 193.4) * (427.2 - 427.2) + (193.4 + 193.4) * (427.2 - 290.9) + (193.4 + 187.4) * (290.9 - 284.9) + (187.4 + 187.4) * (284.9 - 244.8) + (187.4 + 424.1) * (244.8 - 244.8) * 0.5 * 0.00694$