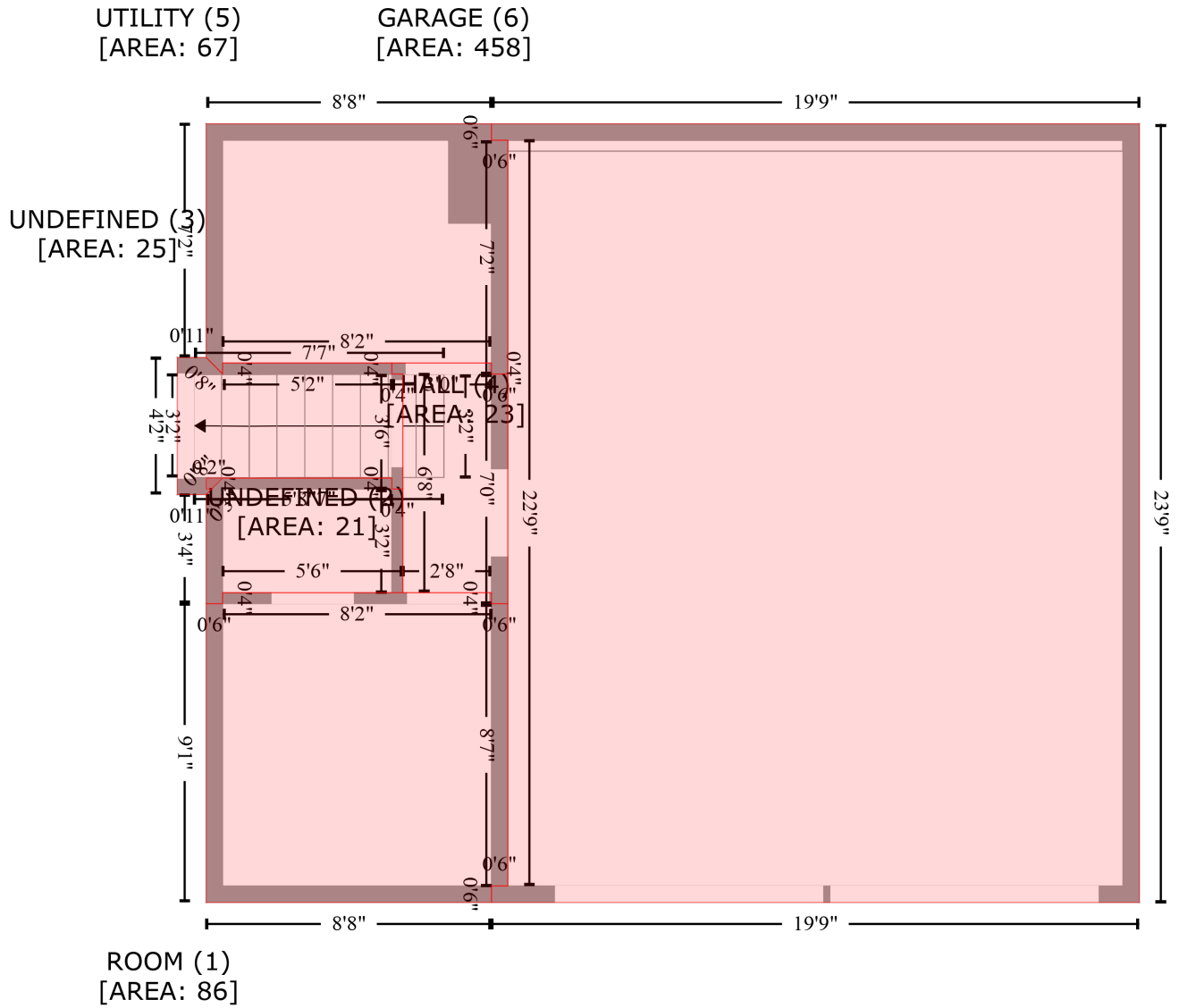


105 Crestwood Dr, Jasper, TX, US

Gross Living Area: 1478 sq. ft



Space	Area (sq. ft)	Calculation <small>Coordinate Polygon Area Algorithm using inches</small>
ROOM (Non-living area)	86	$-\left((291 + 291) * (349.1 - 353.1) + (291 + 297) * (353.1 - 353.1) + (297 + 297) * (353.1 - 456.4) + (297 + 291) * (456.4 - 456.4) + (291 + 291) * (456.4 - 462.4) + (291 + 186.6) * (462.4 - 462.4) + (186.6 + 186.6) * (462.4 - 353.1) + (186.6 + 192.6) * (353.1 - 353.1) + (192.6 + 192.6) * (353.1 - 349.1) + (192.6 + 291) * (349.1 - 349.1)\right) * 0.5 * 0.00694$
UNDEFINED (Non-living area)	21	$-\left((254.6 + 254.6) * (307.2 - 311.2) + (254.6 + 258.6) * (311.2 - 311.2) + (258.6 + 258.6) * (311.2 - 349.1) + (258.6 + 192.6) * (349.1 - 349.1) + (192.6 + 192.6) * (349.1 - 353.1) + (192.6 + 186.6) * (353.1 - 353.1) + (186.6 + 186.6) * (353.1 - 313.2) + (186.6 + 188.6) * (313.2 - 311.2) + (188.6 + 186.6) * (311.2 - 311.2) + (186.6 + 186.6) * (311.2 - 307.2) + (186.6 + 254.6) * (307.2 - 307.2)\right) * 0.5 * 0.00694$

105 Crestwood Dr, Jasper, TX, US

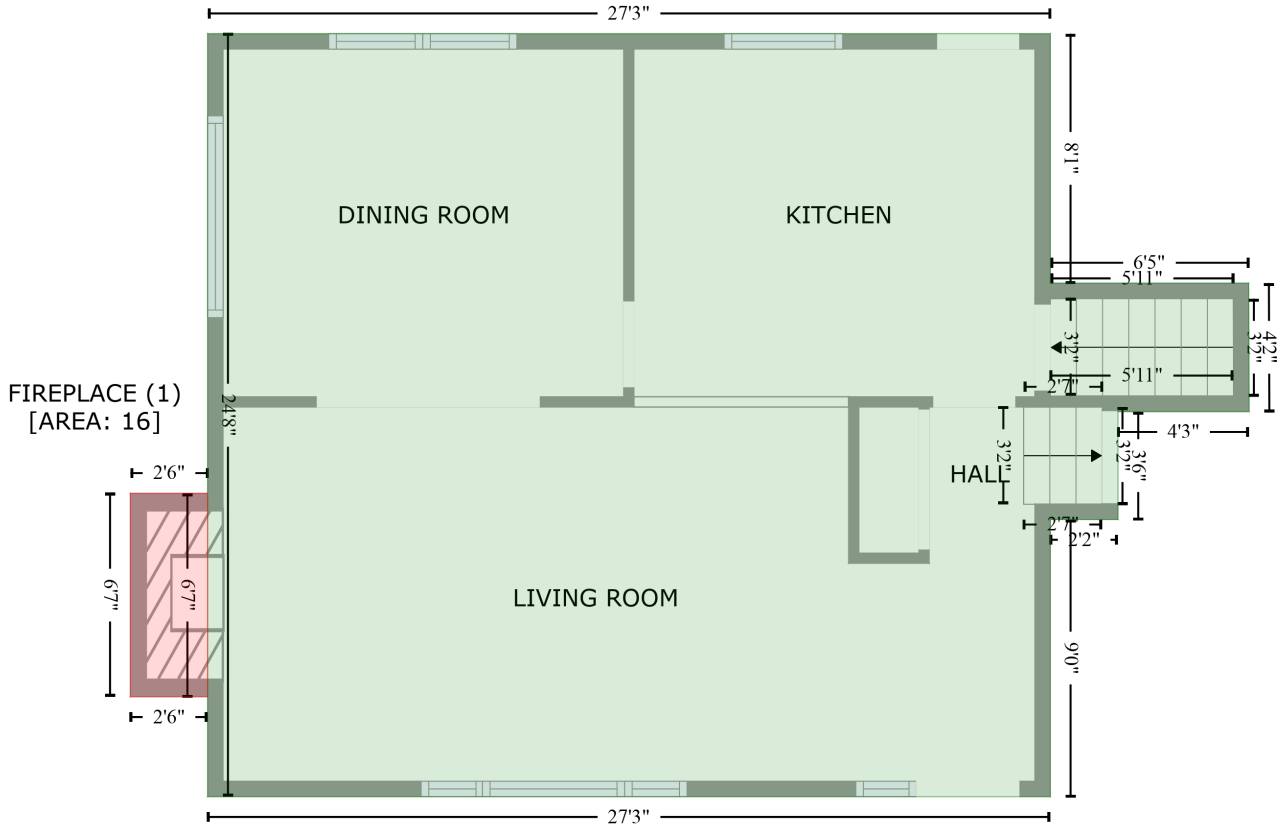
Gross Living Area: 1478 sq. ft

Space	Area (sq. ft)	Calculation <small>Coordinate Polygon Area Algorithm using inches</small>
UNDEFINED (Non-living area)	25	$-\left((186.6 + 192.6) * (263.1 - 269.1) + (192.6 + 192.6) * (269.1 - 265.1) + (192.6 + 254.6) * (265.1 - 265.1) + (254.6 + 254.6) * (265.1 - 269.1) + (254.6 + 258.6) * (269.1 - 269.1) + (258.6 + 258.6) * (269.1 - 311.2) + (258.6 + 254.6) * (311.2 - 311.2) + (254.6 + 254.6) * (311.2 - 307.2) + (254.6 + 192.6) * (307.2 - 307.2) + (192.6 + 186.6) * (307.2 - 313.2) + (186.6 + 176.1) * (313.2 - 313.2) + (176.1 + 176.1) * (313.2 - 263.1) + (176.1 + 186.6) * (263.1 - 263.1)\right) * 0.5 * 0.00694$
HALL (Non-living area)	23	$-\left((291 + 291) * (265.1 - 269.1) + (291 + 297) * (269.1 - 269.1) + (297 + 297) * (269.1 - 353.1) + (297 + 291) * (353.1 - 353.1) + (291 + 291) * (353.1 - 349.1) + (291 + 258.6) * (349.1 - 349.1) + (258.6 + 258.6) * (349.1 - 269.1) + (258.6 + 254.6) * (269.1 - 269.1) + (254.6 + 254.6) * (269.1 - 265.1) + (254.6 + 291) * (265.1 - 265.1)\right) * 0.5 * 0.00694$
UTILITY (Non-living area)	67	$-\left((291 + 291) * (177.6 - 183.6) + (291 + 297) * (183.6 - 183.6) + (297 + 297) * (183.6 - 269.1) + (297 + 291) * (269.1 - 269.1) + (291 + 291) * (269.1 - 265.1) + (291 + 192.6) * (265.1 - 265.1) + (192.6 + 192.6) * (265.1 - 269.1) + (192.6 + 186.6) * (269.1 - 263.1) + (186.6 + 186.6) * (263.1 - 177.6) + (186.6 + 291) * (177.6 - 177.6)\right) * 0.5 * 0.00694$
GARAGE (Non-living area)	458	$-\left((528.1 + 528.1) * (177.6 - 462.4) + (528.1 + 291) * (462.4 - 462.4) + (291 + 291) * (462.4 - 456.4) + (291 + 297) * (456.4 - 456.4) + (297 + 297) * (456.4 - 183.6) + (297 + 291) * (183.6 - 183.6) + (291 + 291) * (183.6 - 177.6) + (291 + 528.1) * (177.6 - 177.6)\right) * 0.5 * 0.00694$

105 Crestwood Dr, Jasper, TX, US

Gross Living Area: 1478 sq. ft

FLOOR 2
[AREA: 708]

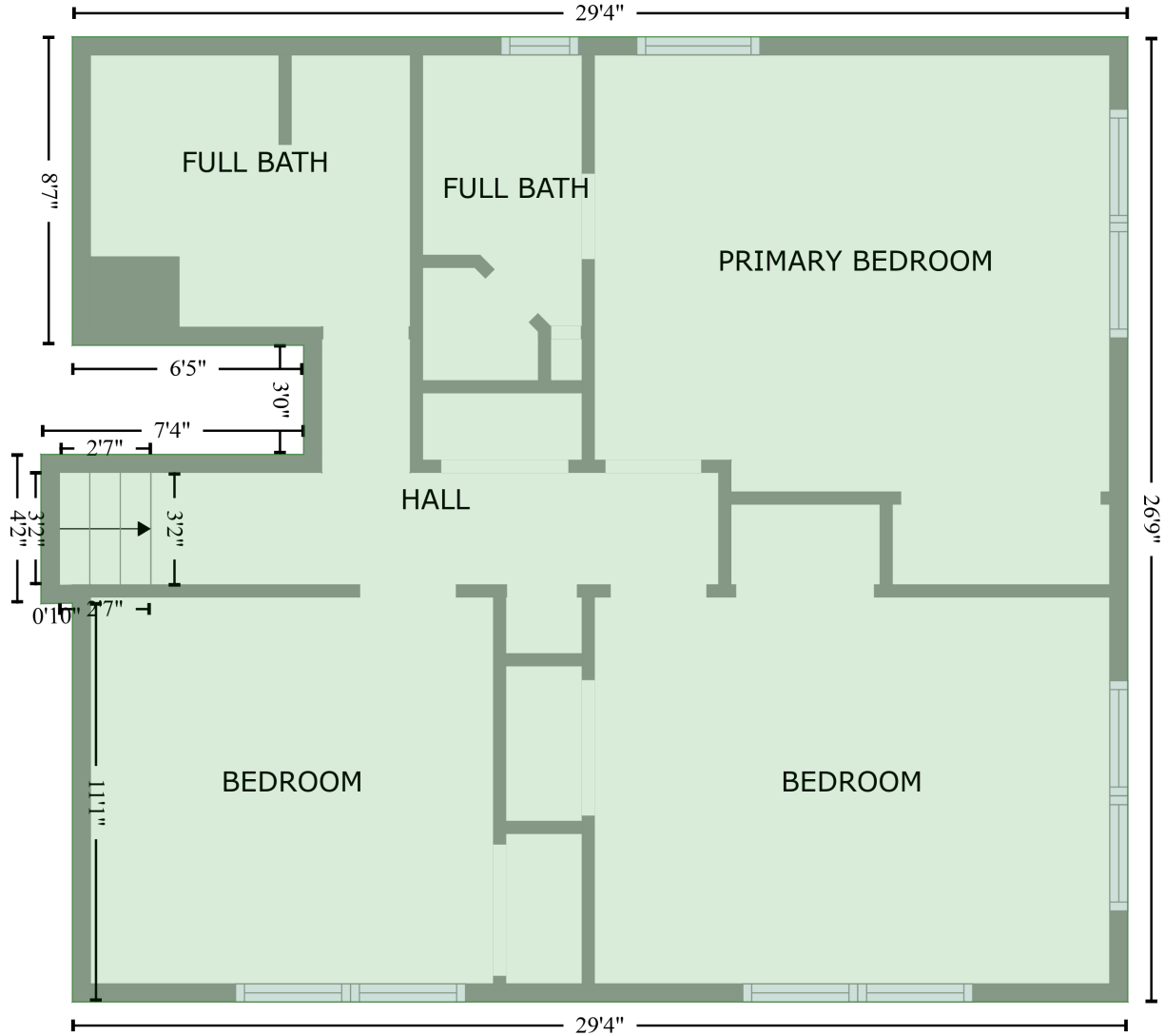


Space	Area (sq. ft)	Calculation <small>Coordinate Polygon Area Algorithm using inches</small>
FLOOR 2 (Living area)	708	$-((182.1 + 182.1) * (166.2 - 263) + (182.1 + 259.2) * (263 - 263) + (259.2 + 259.4) * (263 - 313) + (259.4 + 208.4) * (313 - 313) + (208.4 + 208.4) * (313 - 354.8) + (208.4 + 182.1) * (354.8 - 354.8) + (182.1 + 182.1) * (354.8 - 462.4) + (182.1 + -145.3) * (462.4 - 462.4) + (-145.3 + -145.3) * (462.4 - 166.2) + (-145.3 + 182.1) * (166.2 - 166.2)) * 0.5 * 0.00694$
FIREPLACE (Non-living area)	16	$-((-145.3 + -145.3) * (344.7 - 423.7) + (-145.3 + -175.4) * (423.7 - 423.7) + (-175.4 + -175.4) * (423.7 - 344.7) + (-175.4 + -145.3) * (344.7 - 344.7)) * 0.5 * 0.00694$

105 Crestwood Dr, Jasper, TX, US

Gross Living Area: 1478 sq. ft

FLOOR 3
[AREA: 770]



Space	Area (sq. ft)	Calculation <small>Coordinate Polygon Area Algorithm using inches</small>
FLOOR 3 (Living area)	770	$-\left((528.1 + 528.1) * (166.2 - 487.6) + (528.1 + 176.1) * (487.6 - 487.6) + (176.1 + 176.1) * (487.6 - 354.8) + (176.1 + 165.6) * (354.8 - 355) + (165.6 + 165.6) * (355 - 305.3) + (165.6 + 253.3) * (305.3 - 305.3) + (253.3 + 253.3) * (305.3 - 268.9) + (253.3 + 176.1) * (268.9 - 268.9) + (176.1 + 176.1) * (268.9 - 166.2) + (176.1 + 528.1) * (166.2 - 166.2)\right) * 0.5 * 0.00694$