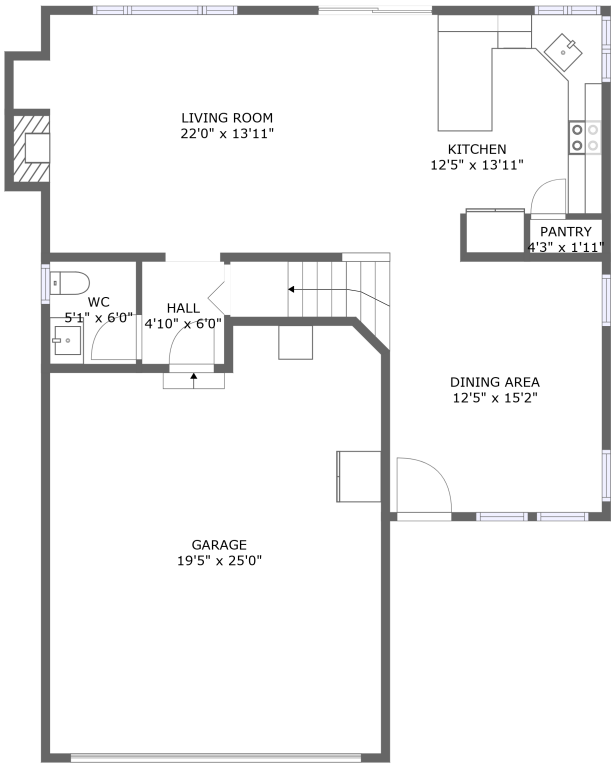
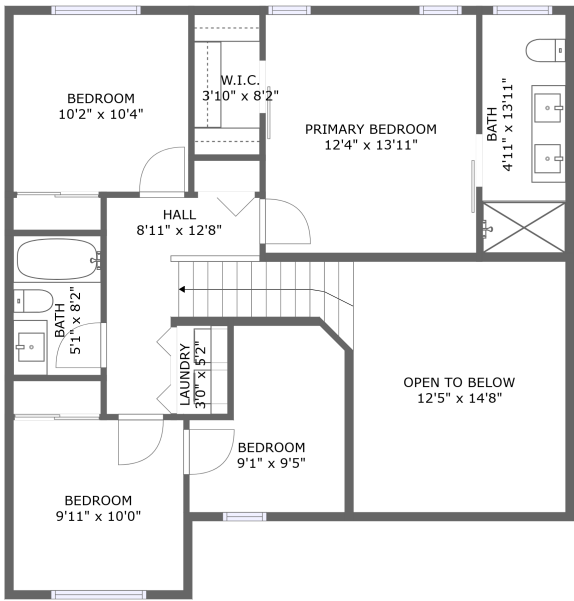


Home report

13405 68th Avenue Southeast, Snohomish Cascade, Silver Firs,
Snohomish, Snohomish County, Washington, United States,



FLOOR 1



FLOOR 2

Property summary



1 Garages



4 Bedrooms



2 Bathrooms



1 Half baths



2 Floors



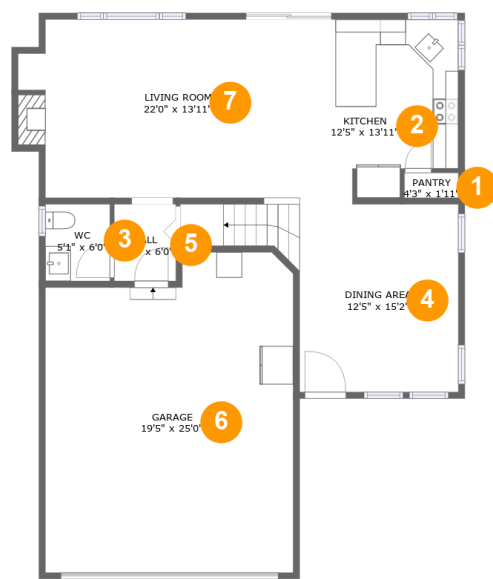
1,681 Gross living area sqft



2,359 Total sqft

Home report

13405 68th Avenue Southeast, Snohomish Cascade, Silver Firs,
Snohomish, Snohomish County, Washington, United States,



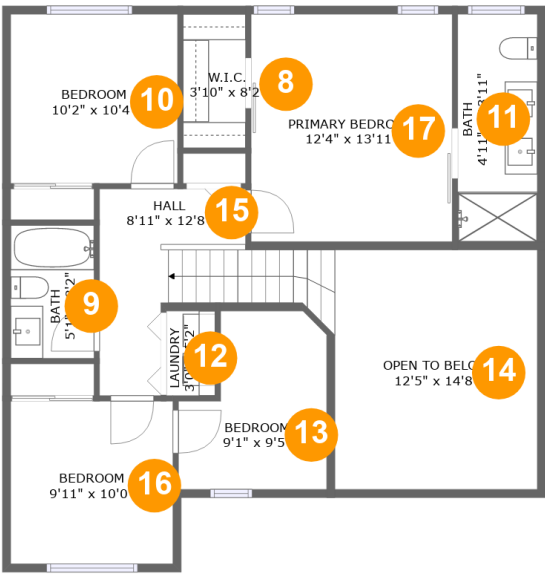
Room dimensions

Floor 1 Total sqft: 1307 Living area: 825

#		Dimensions	sqft	Counted as living area
1	Pantry	4'3" x 1'11"	8 sq. ft	Yes
2	Kitchen	12'5" x 13'11"	162 sq. ft	Yes
3	WC	5'1" x 6'0"	30 sq. ft	Yes
4	Dining Area	12'5" x 15'2"	218 sq. ft	Yes
5	Hall	4'10" x 6'0"	29 sq. ft	Yes
6	Garage	19'5" x 25'0"	454 sq. ft	No
7	Living Room	22'0" x 13'11"	292 sq. ft	Yes

Home report

13405 68th Avenue Southeast, Snohomish Cascade, Silver Firs,
Snohomish, Snohomish County, Washington, United States,



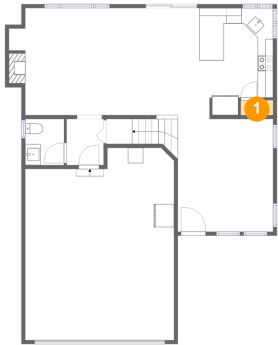
Room dimensions

Floor 2 Total sqft: 1052 Living area: 856

#		Dimensions	sqft	Counted as living area
8	W.I.C.	3'10" x 8'2"	31 sq. ft	Yes
9	Bath	5'1" x 8'2"	42 sq. ft	Yes
10	Bedroom	10'2" x 10'4"	106 sq. ft	Yes
11	Bath	4'11" x 13'11"	68 sq. ft	Yes
12	Laundry	3'0" x 5'2"	16 sq. ft	Yes
13	Bedroom	9'1" x 9'5"	84 sq. ft	Yes
14	Open To Below	12'5" x 14'8"	182 sq. ft	No
15	Hall	8'11" x 12'8"	104 sq. ft	Yes
16	Bedroom	9'11" x 10'0"	99 sq. ft	Yes
17	Primary Bedroom	12'4" x 13'11"	172 sq. ft	Yes

13405 68th Avenue Southeast, Snohomish Cascade, Silver Firs,
Snohomish, Snohomish County, Washington, United States,

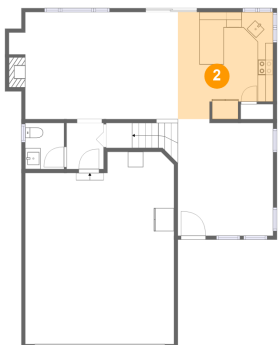
1 Floor 1 - Pantry



Dimensions: 4'3" x 1'11"
Area: 8 sq. ft
Counted as living area: Yes

Heated: Yes
Finished: Yes
Enclosed: Yes
Contiguous: Yes
Permitted: Yes
Wet space: No
Addition: No
Conversion: No

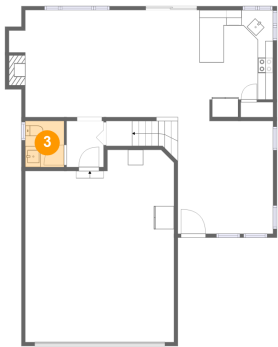
2 Floor 1 - Kitchen



Dimensions: 12'5" x 13'11"
Area: 162 sq. ft
Counted as living area: Yes

Heated: Yes
Finished: Yes
Enclosed: Yes
Contiguous: Yes
Permitted: Yes
Wet space: No
Addition: No
Conversion: No

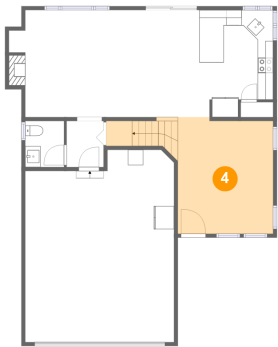
3 Floor 1 - WC



Dimensions: 5'1" x 6'0"
Area: 30 sq. ft
Counted as living area: Yes

Heated: Yes
Finished: Yes
Enclosed: Yes
Contiguous: Yes
Permitted: Yes
Wet space: Yes
Addition: No
Conversion: No

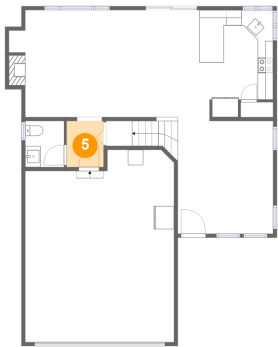
4 Floor 1 - Dining Area



Dimensions: 12'5" x 15'2"
Area: 218 sq. ft
Counted as living area: Yes

Heated: Yes
Finished: Yes
Enclosed: Yes
Contiguous: Yes
Permitted: Yes
Wet space: No
Addition: No
Conversion: No

5 Floor 1 - Hall



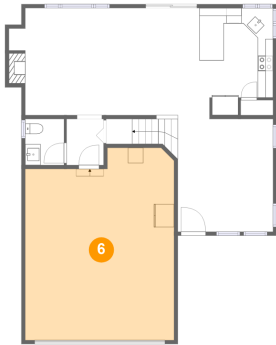
Dimensions: 4'10" x 6'0"
Area: 29 sq. ft
Counted as living area: Yes

Heated: Yes
Finished: Yes
Enclosed: Yes
Contiguous: Yes
Permitted: Yes
Wet space: No
Addition: No
Conversion: No

Home report

13405 68th Avenue Southeast, Snohomish Cascade, Silver Firs,
Snohomish, Snohomish County, Washington, United States,

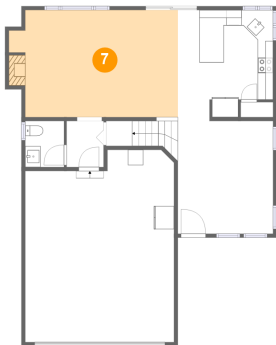
6 Floor 1 - Garage



Dimensions: 19'5" x 25'0"
Area: 454 sq. ft
Counted as living area: No

Heated: No
Finished: No
Enclosed: Yes
Contiguous: Yes
Permitted: Yes
Wet space: No
Addition: No
Conversion: No

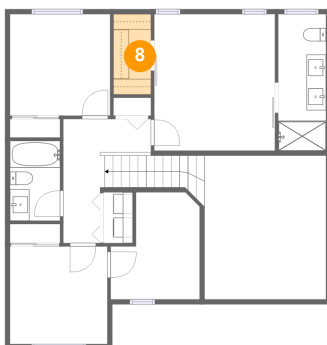
7 Floor 1 - Living Room



Dimensions: 22'0" x 13'11"
Area: 292 sq. ft
Counted as living area: Yes

Heated: Yes
Finished: Yes
Enclosed: Yes
Contiguous: Yes
Permitted: Yes
Wet space: No
Addition: No
Conversion: No

8 Floor 2 - W.I.C.



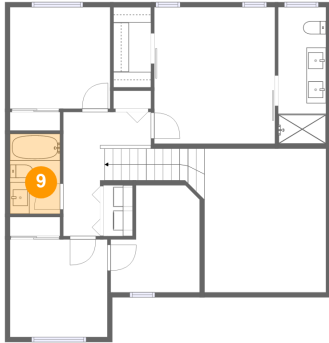
Dimensions: 3'10" x 8'2"
Area: 31 sq. ft
Counted as living area: Yes

Heated: Yes
Finished: Yes
Enclosed: Yes
Contiguous: Yes
Permitted: Yes
Wet space: No
Addition: No
Conversion: No

Home report

13405 68th Avenue Southeast, Snohomish Cascade, Silver Firs,
Snohomish, Snohomish County, Washington, United States,

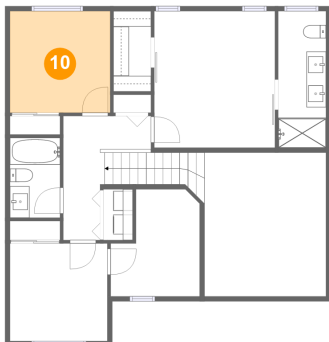
9 Floor 2 - Bath



Dimensions: 5'1" x 8'2"
Area: 42 sq. ft
Counted as living area: Yes

Heated: Yes
Finished: Yes
Enclosed: Yes
Contiguous: Yes
Permitted: Yes
Wet space: Yes
Addition: No
Conversion: No

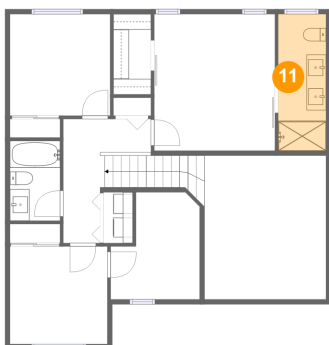
10 Floor 2 - Bedroom



Dimensions: 10'2" x 10'4"
Area: 106 sq. ft
Counted as living area: Yes

Heated: Yes
Finished: Yes
Enclosed: Yes
Contiguous: Yes
Permitted: Yes
Wet space: No
Addition: No
Conversion: No

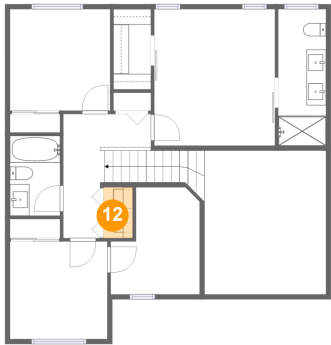
11 Floor 2 - Bath



Dimensions: 4'11" x 13'11"
Area: 68 sq. ft
Counted as living area: Yes

Heated: Yes
Finished: Yes
Enclosed: Yes
Contiguous: Yes
Permitted: Yes
Wet space: Yes
Addition: No
Conversion: No

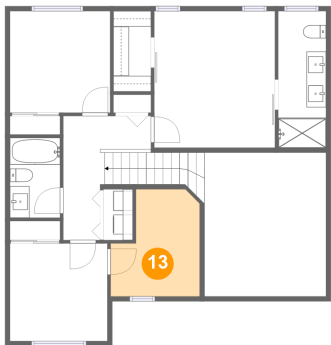
12 Floor 2 - Laundry



Dimensions: 3'0" x 5'2"
Area: 16 sq. ft
Counted as living area: Yes

Heated: Yes
Finished: Yes
Enclosed: Yes
Contiguous: Yes
Permitted: Yes
Wet space: No
Addition: No
Conversion: No

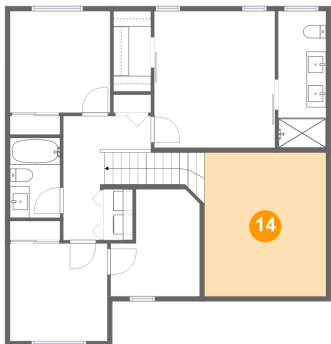
13 Floor 2 - Bedroom



Dimensions: 9'1" x 9'5"
Area: 84 sq. ft
Counted as living area: Yes

Heated: Yes
Finished: Yes
Enclosed: Yes
Contiguous: Yes
Permitted: Yes
Wet space: No
Addition: No
Conversion: No

14 Floor 2 - Open To Below



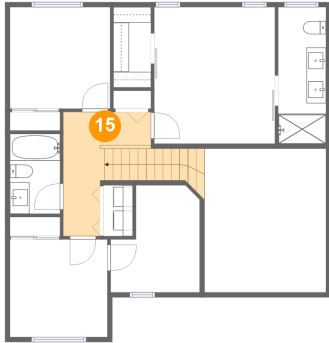
Dimensions: 12'5" x 14'8"
Area: 182 sq. ft
Counted as living area: No

Heated: No
Finished: No
Enclosed: No
Contiguous: Yes
Permitted: No
Wet space: No
Addition: No
Conversion: No

Home report

13405 68th Avenue Southeast, Snohomish Cascade, Silver Firs,
Snohomish, Snohomish County, Washington, United States,

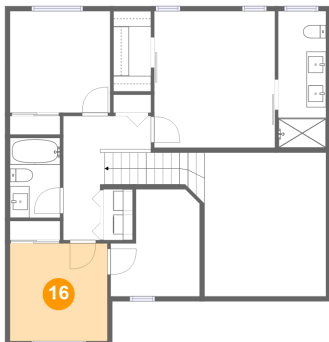
15 Floor 2 - Hall



Dimensions: 8'11" x 12'8"
Area: 104 sq. ft
Counted as living area: Yes

Heated: Yes
Finished: Yes
Enclosed: Yes
Contiguous: Yes
Permitted: Yes
Wet space: No
Addition: No
Conversion: No

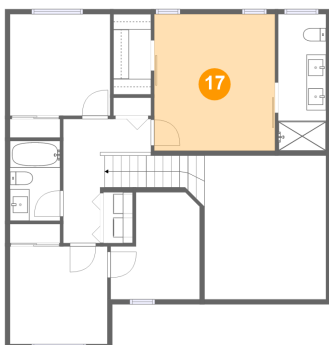
16 Floor 2 - Bedroom



Dimensions: 9'11" x 10'0"
Area: 99 sq. ft
Counted as living area: Yes

Heated: Yes
Finished: Yes
Enclosed: Yes
Contiguous: Yes
Permitted: Yes
Wet space: No
Addition: No
Conversion: No

17 Floor 2 - Primary Bedroom



Dimensions: 12'4" x 13'11"
Area: 172 sq. ft
Counted as living area: Yes

Heated: Yes
Finished: Yes
Enclosed: Yes
Contiguous: Yes
Permitted: Yes
Wet space: No
Addition: No
Conversion: No